



P.O. Box 2267, Midland, Texas 79702  
Phone: (432) 848-9133

*Via email*

April 8, 2021

New Mexico Oil Conservation Division  
Attn: Mr. Leonard Lowe  
1220 South St. Francis  
Santa Fe, NM 87505  
Via: [Leonard.Lowe@state.nm.us](mailto:Leonard.Lowe@state.nm.us)

Re: Notification and Verification of a Standard Well Location for the Streetcar 15  
Fed 504H (30-025-47515), Sec 15, T25S, R33E, Lea County, NM

Dear Mr. Lowe:

Included with this letter are the following documents demonstrating that the above referenced well will be drilled at a standard oil well location:

- C-102 Plat dated September 9, 2020, showing the proposed location of the Streetcar 15 Fed 504H, respectively;
- "Area of Common Ownership Plat" separately showing the spacing units for the well; and
- Certification of Ownership demonstrating the outlined area on the plat is comprised of one federal lease, with uniform ownership.

19.15.16.15.C(7) NMAC provides that in area of common ownership (here, one federal lease) the setback requirements only apply to the outer boundary of the area of uniform ownership, not the spacing unit within the area of uniform ownership. Since the area to the east towards which this well encroaches is within the documented "area of common ownership," this well is at a standard location and approval of a non-standard location for the well is not necessary.

Please place this Notification and Verification of a Standard Well Location in the well files for Streetcar 15 Fed 504H (30-025-47515).

Respectfully submitted,

*Lisa Trascher*

**EOG Resources, Inc.**

Lisa Trascher  
Regulatory Specialist

CC: Mr. Paul Kautz, NMOCD- District 1

District I  
1625 N. French Dr., Hobbs, NM 88240  
Phone: (575) 393-6161 Fax: (575) 393-0720  
District II  
811 S. First St., Artesia, NM 88210  
Phone: (575) 748-1283 Fax: (575) 748-9720  
District III  
1000 Rio Brazos Road, Aztec, NM 87410  
Phone: (505) 334-6178 Fax: (505) 334-6170  
District IV  
1220 S. St. Francis Dr., Santa Fe, NM 87505  
Phone: (505) 476-3460 Fax: (505) 476-3462

State of New Mexico  
Energy, Minerals & Natural Resources  
Department  
OIL CONSERVATION DIVISION  
1220 South St. Francis Dr.  
Santa Fe, NM 87505

FORM C-102

Revised August 1, 2011

Submit one copy to appropriate

District Office

☐ AMENDED REPORT

## WELL LOCATION AND ACREAGE DEDICATION PLAT

<sup>1</sup> API Number <b>30-025- 47515</b>		<sup>2</sup> Pool Code <b>96392</b>	<sup>3</sup> Pool Name <b>Draper Mill; Bone Spring</b>
<sup>4</sup> Property Code <b>315310</b>	<sup>5</sup> Property Name <b>STREETCAR 15 FED</b>		<sup>6</sup> Well Number <b>504H</b>
<sup>7</sup> OGRID No. <b>7377</b>	<sup>8</sup> Operator Name <b>EOG RESOURCES, INC.</b>		<sup>9</sup> Elevation <b>3371'</b>

<sup>10</sup>Surface Location

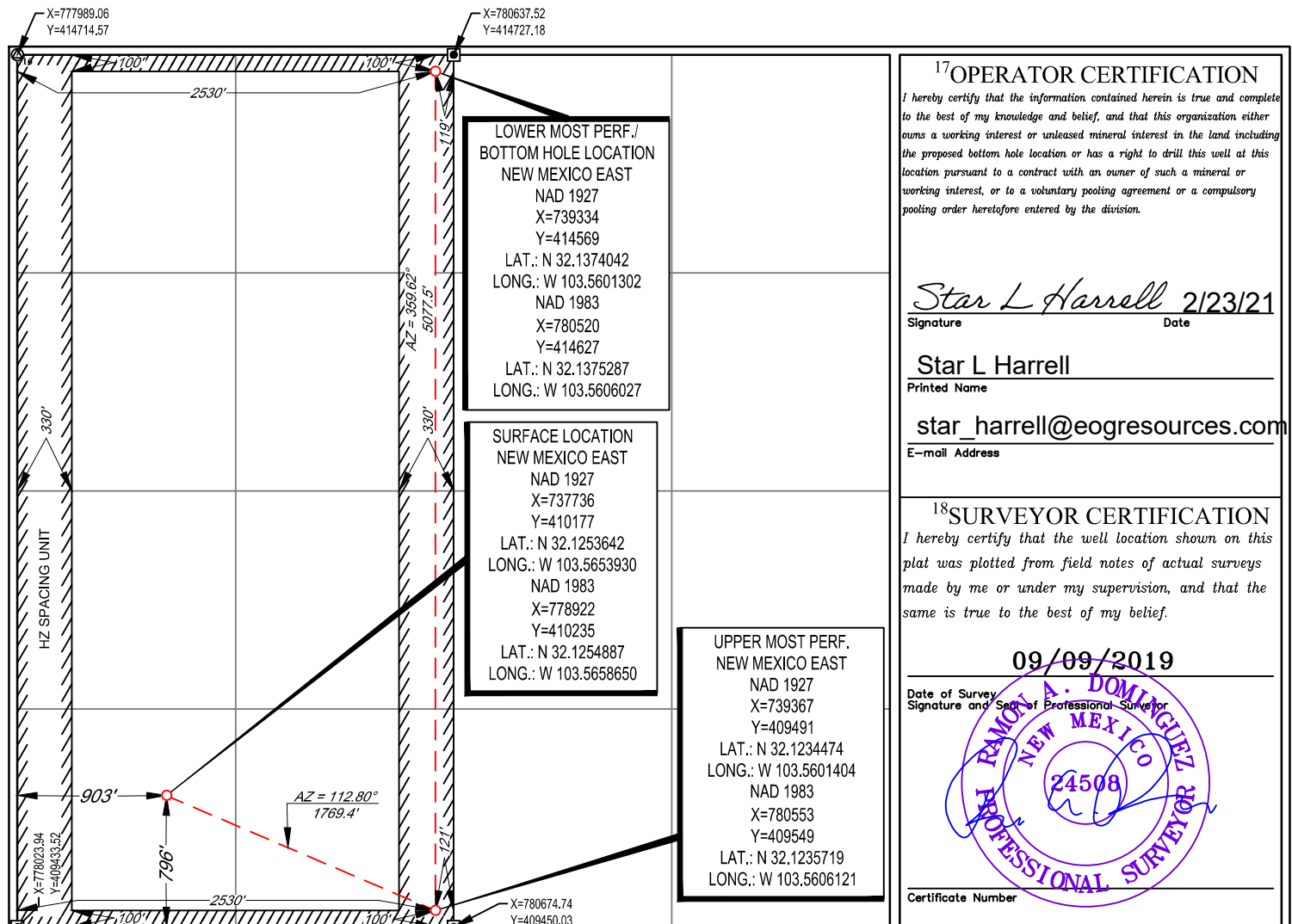
UL or lot no.	Section	Township	Range	Lot Idn	Feet from the	North/South line	Feet from the	East/West line	County
<b>M</b>	<b>15</b>	<b>25-S</b>	<b>33-E</b>	<b>-</b>	<b>796'</b>	<b>SOUTH</b>	<b>903'</b>	<b>WEST</b>	<b>LEA</b>

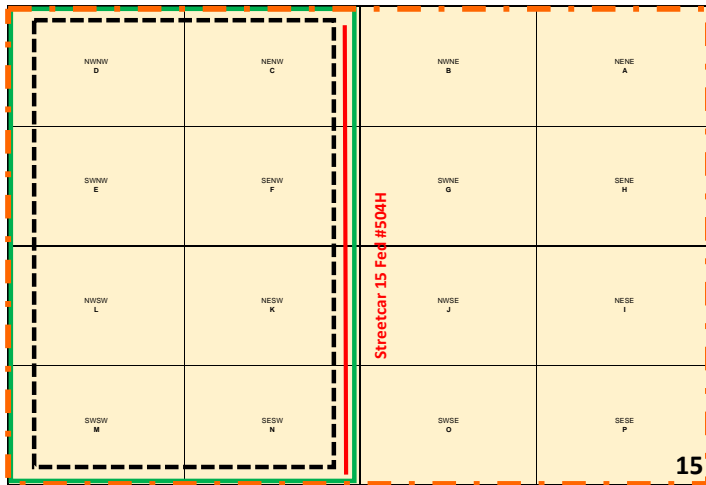
<sup>11</sup>Bottom Hole Location If Different From Surface

UL or lot no.	Section	Township	Range	Lot Idn	Feet from the	North/South line	Feet from the	East/West line	County
<b>C</b>	<b>15</b>	<b>25-S</b>	<b>33-E</b>	<b>-</b>	<b>100'</b>	<b>NORTH</b>	<b>2530'</b>	<b>WEST</b>	<b>LEA</b>





<sup>12</sup> Dedicated Acres <b>320.00</b>	<sup>13</sup> Joint or Infill	<sup>14</sup> Consolidation Code	<sup>15</sup> Order No.
--	-------------------------------	----------------------------------	-------------------------

No allowable will be assigned to this completion until all interests have been consolidated or a non-standard unit has been approved by the division.





**Streetcar 15 Fed Lease Map:  
25 South, 33 East: All of Section 15**

-  USA NMNM-026079
-  Area of Common Ownership
-  Setback Boundary
-  Unit Boundary

### **Certification of Ownership**

I have reviewed the ownership of the oil and gas leasehold (BLM Lease USA NMNM-026079) covering Section 15 in Township 25 South, Range 33 East, Lea County, New Mexico, for purposes of identifying an “area of common ownership” as set forth in NMAC 19.15.16.15.B(8) and C(7). As of this date below, the ownership in the above described leases and lands is identical ownership as defined in 19.15.12.7 B. NMAC.

EOG Resources, Inc.

A handwritten signature in black ink, appearing to read 'RC', is positioned above a horizontal line.

Reece Cook

March 17, 2021