

District I
1625 N. French Dr., Hobbs, NM 88240
Phone: (575) 393-6161 Fax: (575) 393-0720

District II
811 S. First St., Artesia, NM 88210
Phone: (575) 748-1283 Fax: (575) 748-9720

District III
1000 Rio Brazos Road, Aztec, NM 87410
Phone: (505) 334-6178 Fax: (505) 334-6170

District IV
1220 S. St. Francis Dr., Santa Fe, NM 87505
Phone: (505) 476-3460 Fax: (505) 476-3462

State of New Mexico
Energy Minerals and Natural Resources
Oil Conservation Division
1220 South St. Francis Dr.
Santa Fe, NM 87505

Form C-101
Revised July 18, 2013

☐ AMENDED REPORT

APPLICATION FOR PERMIT TO DRILL, RE-ENTER, DEEPEN, PLUGBACK, OR ADD A ZONE

¹ Operator Name and Address PINON MIDSTREAM, LLC 465 W NM HIGHWAY 128; JAL, NM 88252		² OGRID Number 330718
		³ API Number 30-025-49974
⁴ Property Code 332733	⁵ Property Name INDEPENDENCE FEE AGI	⁶ Well No. 2

7. Surface Location

UL - Lot	Section	Township	Range	Lot Idn	Feet from	N/S Line	Feet From	E/W Line	County
C	20	25-S	36-E		1110	NORTH	1,443	WEST	LEA

8. Proposed Bottom Hole Location

UL - Lot	Section	Township	Range	Lot Idn	Feet from	N/S Line	Feet From	E/W Line	County
N	20	25-S	36-E		1080	SOUTH	1978	WEST	LEA

9. Pool Information

Pool Name	Pool Code
AGI; DEVONIAN-FUSSELMAN	97834

Additional Well Information

¹¹ Work Type N	¹² Well Type I	¹³ Cable/Rotary R	¹⁴ Lease Type P	¹⁵ Ground Level Elevation 3,102'
¹⁶ Multiple NO	¹⁷ Proposed Depth 17,683'TVD/18,080'MD	¹⁸ Formation FUSSELMAN	¹⁹ Contractor	²⁰ Spud Date 04/01/2022
Depth to Ground water Approx. 280'		Distance from nearest fresh water well Approx. 1,795'		Distance to nearest surface water

☒ We will be using a closed-loop system in lieu of lined pits

21. Proposed Casing and Cement Program

Type	Hole Size	Casing Size	Casing Weight/ft	Setting Depth	Sacks of Cement	Estimated TOC
Surface	26"	24"	186.4	1,230'	993	Surface
1st Int.	22"	20"	133/163	3,500'	1,864	Surface
2nd Int.	17.5"	13.625"	88.2	7,200'	3,581	Surface
3rd Int.	12.25"	9.625"	47	13,650'	4,107	Surface
Production	8.5"	7"	32	16,477'	1,792	Surface


Casing/Cement Program: Additional Comments

Additional casing and cementing details are included in the Attachment B - Independence AGI #2 well schematic

22. Proposed Blowout Prevention Program

Type	Working Pressure	Test Pressure	Manufacturer
Annular	5,000	4,500	
Double Ram	10,000	9,500	

²³ I hereby certify that the information given above is true and complete to the best of my knowledge and belief.

I further certify that I have complied with 19.15.14.9 (A) NMAC ☒ and/or 19.15.14.9 (B) NMAC ☒ if applicable.
Signature: 

OIL CONSERVATION DIVISION

Approved By:



Printed name: **David A. White, P.G.**

Title: **UIC Manager**

Title: **Consultant to Piñon Midstream, LLC**

Approved Date: **04/05/2022**

Expiration Date: **04/05/2024**

E-mail Address: **dwhite@geolex.com**

Date: **February 14, 2022**

Phone: **(505)842-8000**

Conditions of Approval Attached

District I
1625 N. French Dr., Hobbs, NM 88240
Phone: (575) 393-6161 Fax: (575) 393-0720
District II
811 S. First St., Artesia, NM 88210
Phone: (575) 748-1283 Fax: (575) 748-9720
District III
1000 Rio Brazos Road, Aztec, NM 87410
Phone: (505) 334-6178 Fax: (505) 334-6170
District IV
1220 S. St. Francis Dr., Santa Fe, NM 87505
Phone: (505) 476-3460 Fax: (505) 476-3462

State of New Mexico
Energy, Minerals & Natural Resources
Department
OIL CONSERVATION DIVISION
1220 South St. Francis Dr.
Santa Fe, NM 87505

FORM C-102

Revised August 1, 2011

Submit one copy to appropriate

District Office

☐ AMENDED REPORT

WELL LOCATION AND ACREAGE DEDICATION PLAT

¹ API Number 30-025-49974		² Pool Code 97834		³ Pool Name AGI; DEVONIAN-FUSSELMAN	
⁴ Property Code 332733		⁵ Property Name INDEPENDENCE FEE AGI			⁶ Well Number 2
⁷ OGRID No. 330718		⁸ Operator Name PIÑON MIDSTREAM, LLC			⁹ Elevation 3102'

¹⁰Surface Location

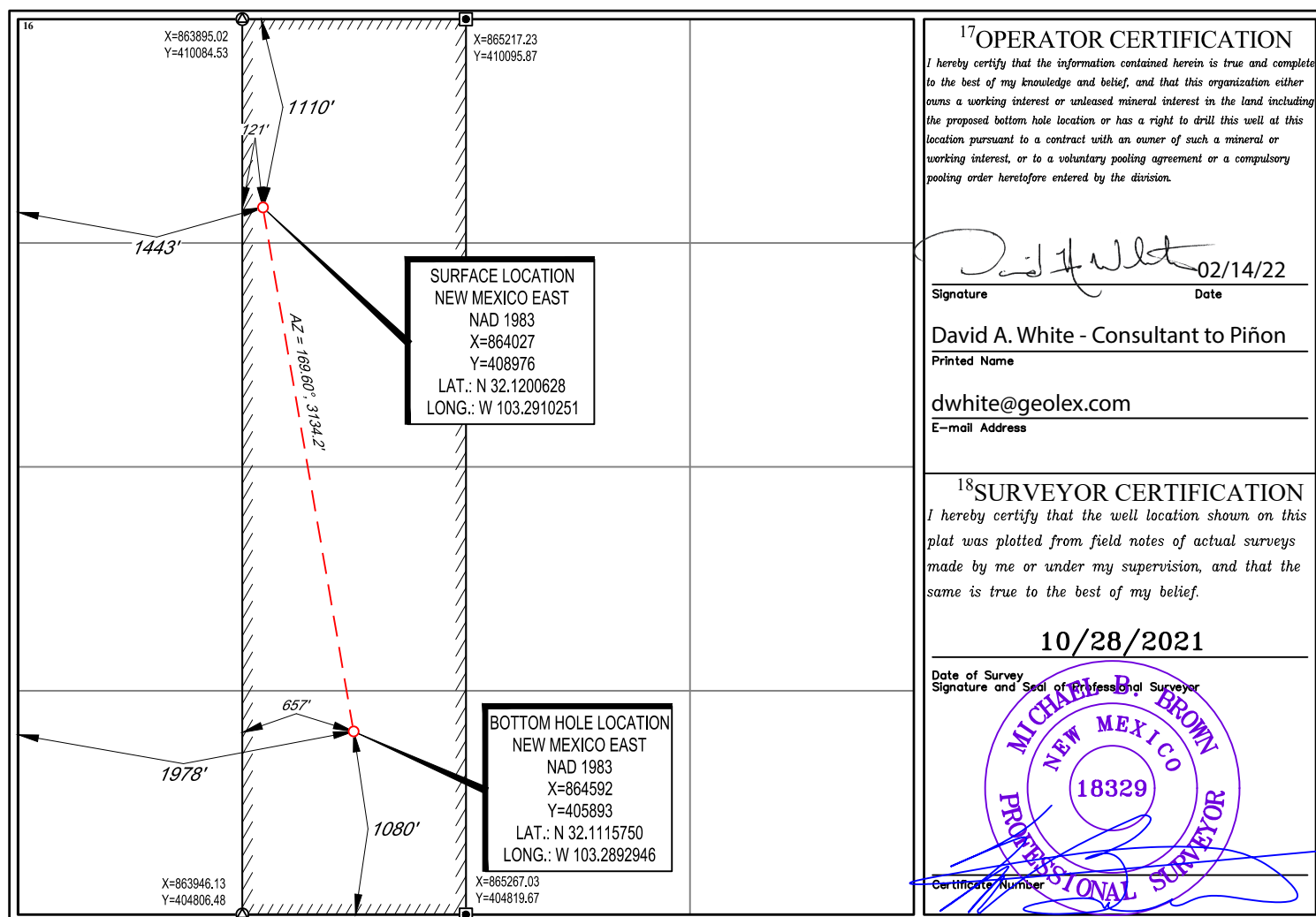
UL or lot no.	Section	Township	Range	Lot Idn	Feet from the	North/South line	Feet from the	East/West line	County
C	20	25-S	36-E	-	1110'	NORTH	1443'	WEST	LEA

¹¹Bottom Hole Location If Different From Surface

UL or lot no.	Section	Township	Range	Lot Idn	Feet from the	North/South line	Feet from the	East/West line	County
N	20	25-S	36-E	-	1080'	SOUTH	1978'	WEST	LEA

¹² Dedicated Acres 160	¹³ Joint or Infill	¹⁴ Consolidation Code	¹⁵ Order No.
---	-------------------------------	----------------------------------	-------------------------

No allowable will be assigned to this completion until all interests have been consolidated or a non-standard unit has been approved by the division.



¹⁷OPERATOR CERTIFICATION

I hereby certify that the information contained herein is true and complete to the best of my knowledge and belief, and that this organization either owns a working interest or unleased mineral interest in the land including the proposed bottom hole location or has a right to drill this well at this location pursuant to a contract with an owner of such a mineral or working interest, or to a voluntary pooling agreement or a compulsory pooling order heretofore entered by the division.

David A. White 02/14/22
Signature Date

David A. White - Consultant to Piñon

Printed Name

dwhite@geolex.com

E-mail Address

¹⁸SURVEYOR CERTIFICATION

I hereby certify that the well location shown on this plat was plotted from field notes of actual surveys made by me or under my supervision, and that the same is true to the best of my belief.

10/28/2021

Date of Survey
Signature and Seal of Professional Surveyor

Michael B. Brown
MICHAEL B. BROWN
NEW MEXICO
18329
PROFESSIONAL SURVEYOR
Certificate Number