

UNITED STATES
DEPARTMENT OF THE INTERIOR
GEOLOGICAL SURVEY

APPLICATION FOR PERMIT TO DRILL, DEEPEN, OR PLUG BACK

1a. TYPE OF WORK

DRILL ☒DEEPEN ☐PLUG BACK ☐

b. TYPE OF WELL

OIL
WELL ☒GAS
WELL ☐

OTHER

SINGLE

☒

MULTIPLE

ZONES ☐

2. NAME OF OPERATOR

Humble Oil & Refining Company

3. ADDRESS OF OPERATOR

P. O. Box 1600, Midland, Texas 79701

4. LOCATION OF WELL (Report location clearly and in accordance with any State requirements.*)

At surface

2,200' FSL & 440' FEL of Section 19

At proposed prod. zone

Same

14. DISTANCE IN MILES AND DIRECTION FROM NEAREST TOWN OR POST OFFICE*

2-½ miles West of Naravisa, New Mexico

15. DISTANCE FROM PROPOSED*

440'

LOCATION TO NEAREST

PROPERTY OR LEASE LINE, FT.

(Also to nearest dirg. unit line, if any)

440'

18. DISTANCE FROM PROPOSED LOCATION*

TO NEAREST WELL, DRILLING, COMPLETED,
OR APPLIED FOR, ON THIS LEASE, FT.

None

16. NO. OF ACRES IN LEASE

160

19. PROPOSED DEPTH

1,600'

17. NO. OF ACRES ASSIGNED
TO THIS WELL

40

20. ROTARY OR CABLE TOOLS

Rotary

21. ELEVATIONS (Show whether DF, RT, GR, etc.)

To be filed later.

22. APPROX. DATE WORK WILL START*

8-30-71

23.

PROPOSED CASING AND CEMENTING PROGRAM

SIZE OF HOLE	SIZE OF CASING	WEIGHT PER FOOT	SETTING DEPTH	QUANTITY OF CEMENT
9-5/8"	7" or 7-5/8"	20# or 24#	100'	50 sx. Circ. to surface
6-1/4" or 6-3/4"	2-7/8" or 4-1/2"	6.5# or 9.5#	1,600'	Approx. 150 sx. *

*Sufficient quantity of Portland Cement to raise cement to 600' below surface.

Minimum fresh water gel mud for samples and logging.

HOWCO method of cementing to be used.

IN ABOVE SPACE DESCRIBE PROPOSED PROGRAM: If proposal is to deepen or plug back, give data on present productive zone and proposed new productive zone. If proposal is to drill or deepen directionally, give pertinent data on subsurface locations and measured and true vertical depths. Give blowout preventer program, if any.

24.

SIGNED

D. L. Clemmer
D. L. Clemmer

TITLE

Proration Specialist

DATE

8-17-71

(This space for Federal or State office use)

PERMIT NO.

APPROVAL DATE

APPROVED BY

TITLE

DATE

CONDITIONS OF APPROVAL, IF ANY:

*See Instructions On Reverse Side

NEW MEXICO OIL CONSERVATION COMMISSION
WELL LOCATION AND ACREAGE DEDICATION PLAT

Form C-102
Supersedes C-128
Effective 1-1-65

RECEIVED

All distances must be from the outer boundaries of the Section.

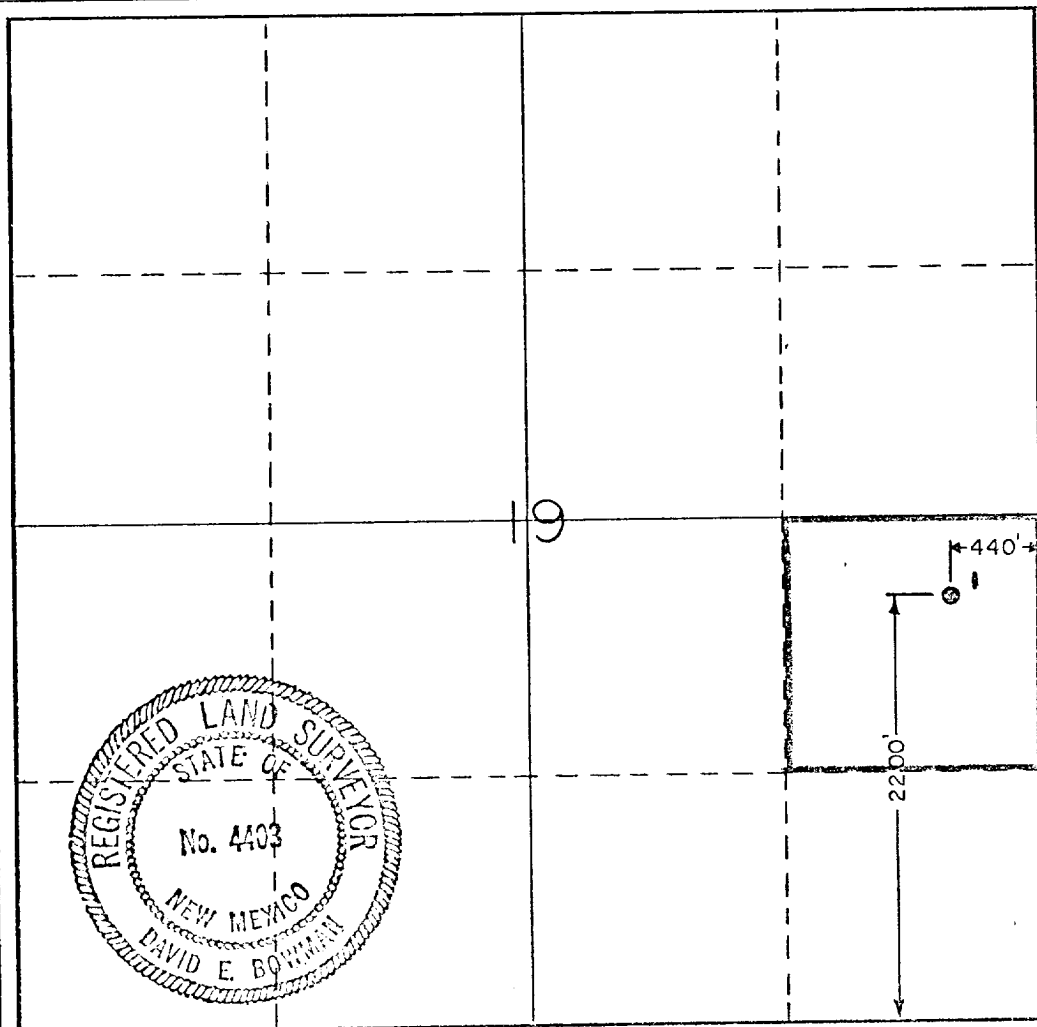
Operator Humble Oil & Refining Co.			Lease Federal - Cherokee "E"		Well No. 1
Unit Letter "I"	Section 19	Township T16N	Range R 36 E	County Quay	
Actual Footage Location of Well: 2200 feet from the South line and 440 feet from the East line					
Ground Level Elev. 4282	Producing Formation San Andres		Pool Wildcat		Dedicated Acreage: 40 Acres

1. Outline the acreage dedicated to the subject well by colored pencil or hachure marks on the plat below.
2. If more than one lease is dedicated to the well, outline each and identify the ownership thereof (both as to working interest and royalty).
3. If more than one lease of different ownership is dedicated to the well, have the interests of all owners been consolidated by communitization, unitization, force-pooling, etc?

☐ Yes ☐ No If answer is "yes," type of consolidation _____

If answer is "no," list the owners and tract descriptions which have actually been consolidated. (Use reverse side of this form if necessary.) _____

No allowable will be assigned to the well until all interests have been consolidated (by communitization, unitization, forced-pooling, or otherwise) or until a non-standard unit, eliminating such interests, has been approved by the Commission.



CERTIFICATION

I hereby certify that the information contained herein is true and complete to the best of my knowledge and belief.

Name **D. L. Clemmer**

Position
Proration Specialist

Company
Humble Oil & Refining Co.

Date
August 17, 1971

Ballew & Associates, P.A.

I hereby certify that the well location shown on this plat was plotted from field notes of actual surveys made by me or under my supervision, and that the same is true and correct to the best of my knowledge and belief.

David E. Bowman
David E. Bowman

Date Surveyed
June 29, 1971

Registered Professional Engineer
and/or Land Surveyor

Land Surveyor

Certificate No.
N.M.R.L.S. No. 4403

0 330 660 990 1320 1650 1980 2310 2640 2000 1500 1000 500 0