

NO. OF COPIES RECEIVED	
DISTRIBUTION	
SANTA FE	
FILE	✓
U.S.G.S.	
LAND OFFICE	
OPERATOR	

# NEW MEXICO OIL CONSERVATION COMMISSION

Form C-101  
Revised 1-1-65

API # 30-049-20009

## APPLICATION FOR PERMIT TO DRILL, DEEPEN, OR PLUG BACK

1a. Type of Work		7. Unit Agreement Name	
b. Type of Well DRILL <input checked="" type="checkbox"/> DEEPEN <input type="checkbox"/> PLUG BACK <input type="checkbox"/> OIL WELL <input type="checkbox"/> GAS WELL <input type="checkbox"/> OTHER <input type="checkbox"/> SINGLE ZONE <input type="checkbox"/> MULTIPLE ZONE <input type="checkbox"/>		8. Farm or Lease Name ORTIZ	
2. Name of Operator Pelto Oil Company		9. Well No. 1	
3. Address of Operator Two Greenspoint Plaza - Suite 400 16825 Northchase - Houston, Texas 77060		10. Field and Pool, or Wildcat Wildcat	
4. Location of Well UNIT LETTER 0 LOCATED 3450 FEET FROM THE West LINE AND 4290 FEET FROM THE North LINE OF SEC. 26 TWP. 14N RGE. 8E NMPM		12. County Santa Fe	
19. Proposed Depth 10,000		19A. Formation Cretaceous	
20. Rotary or C.T. Rotary		21. Elevations (Show whether DF, RT, etc.) 5784 GR	
21A. Kind & Status Plug. Bond Blanket		21B. Drilling Contractor Loffland Bros	
22. Approx. Date Work will start April 30, 1981			

## PROPOSED CASING AND CEMENT PROGRAM

SIZE OF HOLE	SIZE OF CASING	WEIGHT PER FOOT	SETTING DEPTH	SACKS OF CEMENT	EST. TOP
17 1/2"	13 3/8"	54.5#	500'	525 Sx	Surface
12 1/2"	9 5/8"	40#	5200'	600 sx	surface
8 3/4"	7"	23#	as needed	to be determined from caliper logs and production zones	

We propose to drill a 10,000' Dakota test at thsi location. We will drill a 17 1/2" hole to 500 feet and set 500' of 13 3/8" surface casing. We will drill a 12 1/2" hole to 5200' and set 9 5/8" intermediate casing. We will then drill a 8 3/4" hole and in the event of oil or gas shows we intend to DST and will run 7" production string as warranted.

IN ABOVE SPACE DESCRIBE PROPOSED PROGRAM: IF PROPOSAL IS TO DEEPEN OR PLUG BACK, GIVE DATA ON PRESENT PRODUCTIVE ZONE AND PROPOSED NEW PRODUCTIVE ZONE. GIVE BLOWOUT PREVENTER PROGRAM, IF ANY.

I hereby certify that the information above is true and complete to the best of my knowledge and belief.

Signed Carl Elvrog Title Consulting Engineer Date January 15, 1981

(This space for State Use)

APPROVED BY Carl Elvrog TITLE SENIOR PETROLEUM GEOLOGIST DATE 2/4/81

CONDITIONS OF APPROVAL, IF ANY:

OIL CONSERVATION COMMISSION TO BE NOTIFIED  
WITHIN 24 HOURS OF BEGINNING OPERATIONS

APPROVAL VALID FOR 90 DAYS  
PERMIT TO DRILL 5-5-81  
UNLESS DRILLING UNDERWAY

All distances must be from the outer boundaries of the Section.

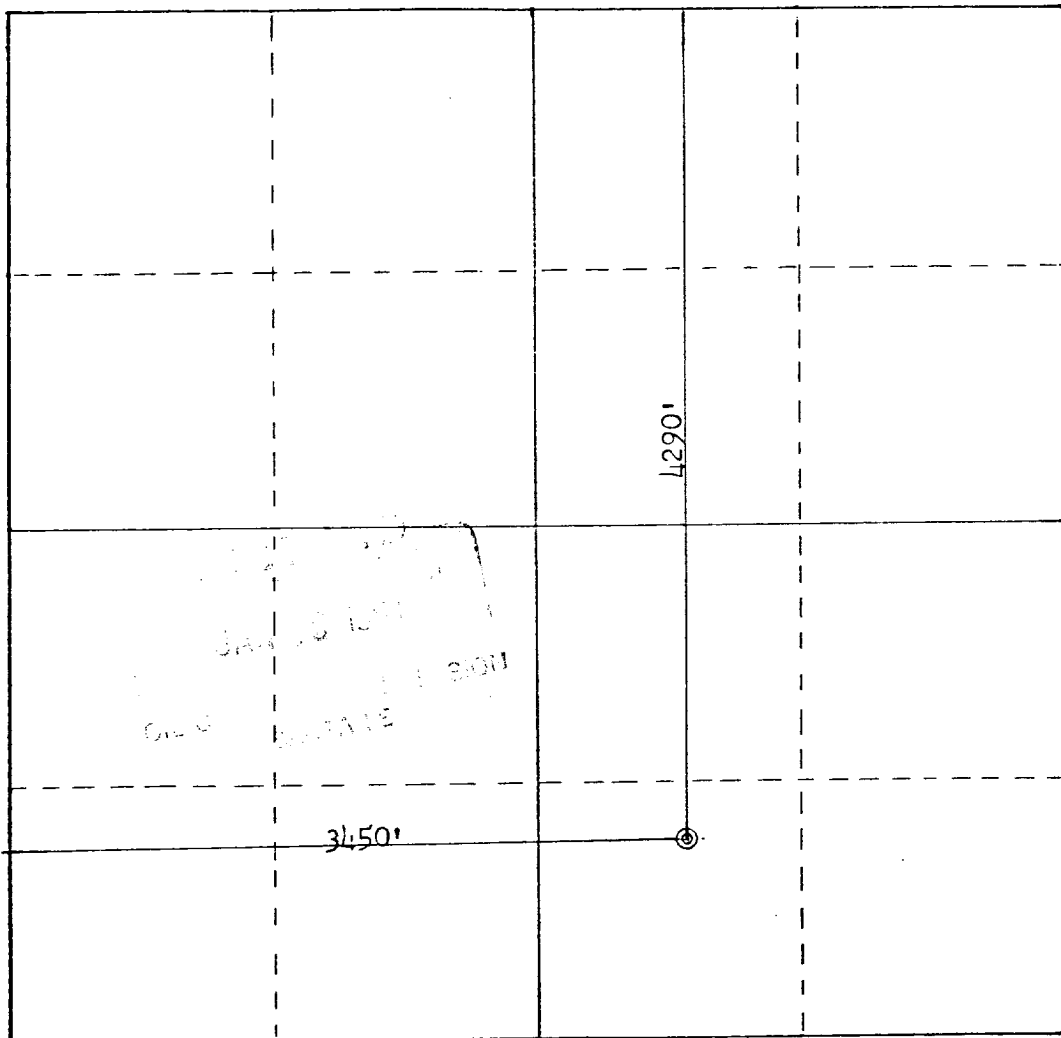
Operator <b>PELTO OIL COMPANY</b>		Lease <b>ORTIZ</b>		Well No. <b>100</b>
Unit Letter <b>0</b>	Section <b>26</b>	Township <b>14N</b>	Range <b>8E</b>	County <b>SANTA FE</b>
Actual Footage Location of Well: <b>4290</b> feet from the <b>North</b> line and <b>3450</b> feet from the <b>West</b> line				
Ground Level Elev. <b>5784</b>	Producing Formation	Pool	Dedicated Acreage: Acres	

1. Outline the acreage dedicated to the subject well by colored pencil or hachure marks on the plat below.
2. If more than one lease is dedicated to the well, outline each and identify the ownership thereof (both as to working interest and royalty).
3. If more than one lease of different ownership is dedicated to the well, have the interests of all owners been consolidated by communitization, unitization, force-pooling, etc?

☐ Yes ☐ No If answer is "yes," type of consolidation \_\_\_\_\_

If answer is "no," list the owners and tract descriptions which have actually been consolidated. (Use reverse side of this form if necessary.) \_\_\_\_\_

No allowable will be assigned to the well until all interests have been consolidated (by communitization, unitization, forced-pooling, or otherwise) or until a non-standard unit, eliminating such interests, has been approved by the Commission.



Scale: 1"=1000'

CERTIFICATION

I hereby certify that the information contained herein is true and complete to the best of my knowledge and belief.

Name  
**Bruce A. Black**

Position  
**Consultant**

Company  
**Pelto Oil Company**

Date  
**January 15, 1981**

I hereby certify that the well location shown on this plat was plotted from field notes of actual surveys made by me or under my supervision, and that the same is true and correct to the best of my knowledge and belief.

Date Surveyed  
**December 17, 1980**  
Registered Professional Engineer and Land Surveyor  
**Fred B. Kerfor**  
Certificate No. **3950**