



# United States Department of the Interior

BUREAU OF LAND MANAGEMENT  
Caller Service 4104  
Farmington, New Mexico 87499

IN REPLY REFER TO  
3100 (016)

To Whom it may Concern:

In order to minimize further confusion concerning Proprietary or Confidential Information, as interpreted by the Bureau of Land Management, for proposed actions taking place on ALL Federal and Indian oil and gas leases, this office will no longer provide copies of "Approved" or "Accepted For Record" APDs, Sundry Notices, Completion Reports, etc., to NMOCD.

It will hereafter be the responsibility of the operator to forward approved copies to NMOCD. If the operator chooses to continue sending two copies to this office, as in the past, those copies will be processed and attached to the operator's copy and returned to the operator for submittal to NMOCD. If the operator chooses to send less copies to this office, we will process the operators copy and return for the operator to copy and forward to NMOCD.

Confidential

SUBMIT IN TRIPLICATE\*  
(Other instructions on  
reverse side)Form approved.  
Budget Bureau No. 42-R1425.UNITED STATES  
DEPARTMENT OF THE INTERIOR  
GEOLOGICAL SURVEY

## APPLICATION FOR PERMIT TO DRILL, DEEPEN, OR PLUG BACK

## 1a. TYPE OF WORK

DRILL ☒DEEPEN ☐PLUG BACK ☐

## b. TYPE OF WELL

OIL  
WELL ☒GAS  
WELL ☐OTHER ☐SINGLE  
ZONE ☐MULTIPLE  
ZONE ☐

## 2. NAME OF OPERATOR

Peyton Yates

## 3. ADDRESS OF OPERATOR

207 South Fourth St., Artesia, New Mexico 88210

## 4. LOCATION OF WELL (Report location clearly and in accordance with any State requirements.)\*

At surface

2310 FSL - 2310 FEL RECEIVED

At proposed prod. zone

Same

## 14. DISTANCE IN MILES AND DIRECTION FROM NEAREST TOWN OR POST OFFICE\*

8.5 Miles West of Santa Fe

## 10. DISTANCE FROM PROPOSED\*

LOCATION TO NEAREST  
PROPERTY OR LEASE LINE, FT.  
(Also to nearest drlg. unit line, if any)

2310'

18. DISTANCE FROM PROPOSED LOCATION\*  
TO NEAREST WELL, DRILLING, COMPLETED,  
OR APPLIED FOR, ON THIS LEASE, FT.

## 19. PROPOSED DEPTH

8300' +

## 21. ELEVATIONS (Show whether DF, RT, GR, etc.)

6610' GL

## DRILLING OPERATIONS

## SUBJECT TO

## "GENERAL REQUIREMENTS"

## PROPOSED CASING AND CEMENTING PROGRAM

## 23.

SIZE OF HOLE	SIZE OF CASING	WEIGHT PER FOOT	SETTING DEPTH	QUANTITY OF CEMENT
12 1/4"	10-3/4"	40.5#J-55	600'	350 SX Circulated
8-3/4"	7"	14#J-55	3500'	250 SX Circulated
6 1/2"	4 1/2"	9.5#J-55	TD	200 SX

We propose to drill and test the 2nd. Paleozoic Undif. and intermediate formations, approximately 600' of surface casing will be set and cement circulated to shut off gravel and caving, if any. If commercial production casing will be furn and cemented with adequate cover, perforated and stimulated as needed for production.

MUD PROGRAM: FW gel/LCM to 600', FWgel/driskpak to 3800', FW gel LCM starch to TD.

BOP PROGRAM: BOP's will be installed after setting the 10-3/4" and tested daily.

IN ABOVE SPACE DESCRIBE PROPOSED PROGRAM: If proposal is to deepen or plug back, give data on present productive zone and proposed new productive zone. If proposal is to drill or deepen directionally, give pertinent data on subsurface locations and measured and true vertical depths. Give blowout preventer program, if any.

## 24.

SIGNED

TITLE Regulatory Agent

DATE 11/15/1984

(This space for Federal or State office use)

PERMIT NO.

APPROVAL DATE

APPROVED BY

TITLE

CONDITIONS OF APPROVAL, IF ANY:

AS AMENDED

NOV 27 1984

BUREAU OF LAND MANAGEMENT  
FARMINGTON RESOURCE AREA

\*See Instructions On Reverse Side

NMOCC - SANTA FE

NEW MEXICO OIL CONSERVATION COMMISSION  
WELL LOCATION AND ACREAGE DEDICATION PLAT

Confidential

Form C-102  
Supersedes C-128  
Effective 1-1-65

All distances must be from the outer boundaries of the Section.

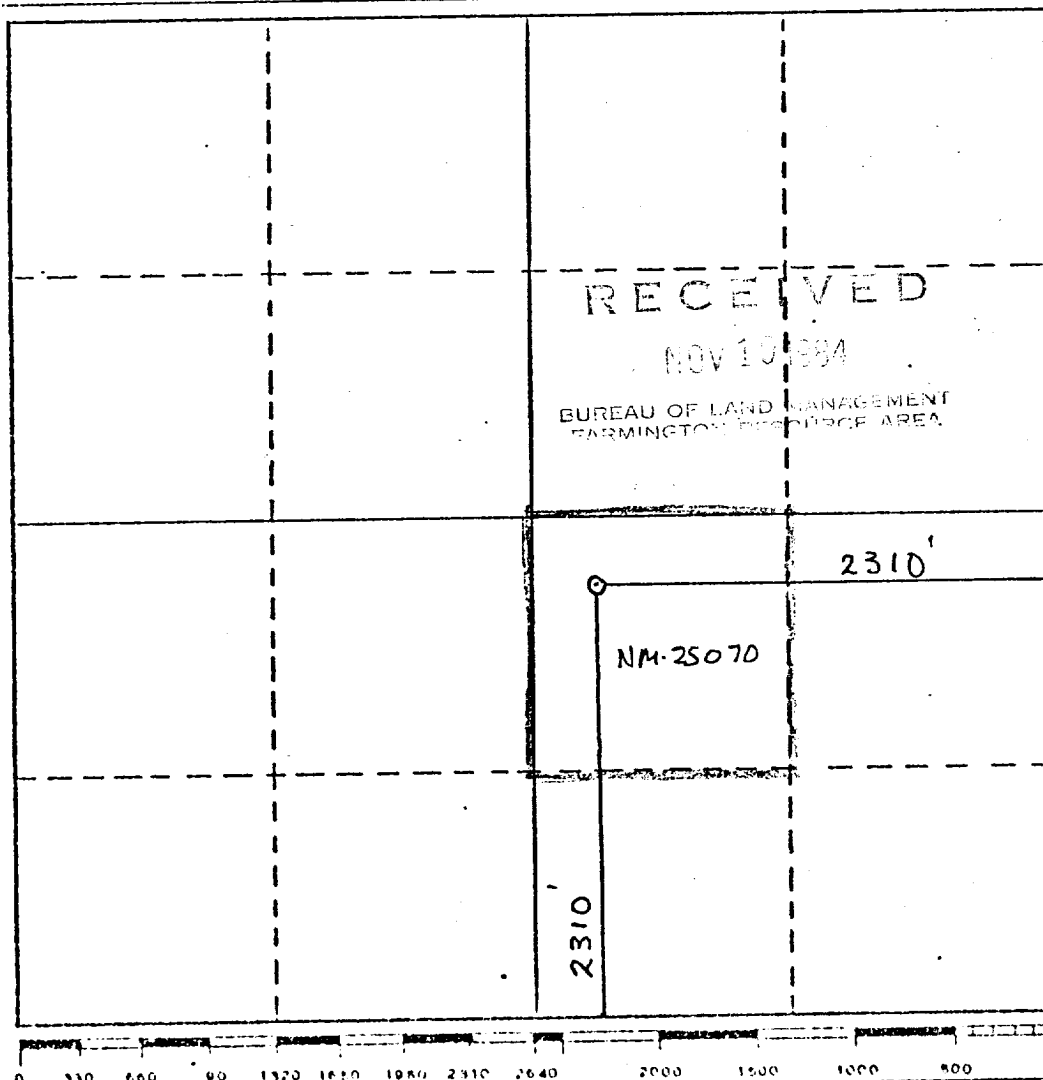
Operator <b>PEYTON YATES</b>		Lease <b>LA MESA UNIT</b>		Well No. <b>2</b>
Unit Letter <b>J</b>	Section <b>24</b>	Township <b>17 North</b>	Range <b>8 East</b>	County <b>Santa Fe</b>
Actual Footage Location of Well:				
<b>2310</b>	feet from the <b>SOUTH</b>	line and	<b>2310</b>	feet from the <b>EAST</b>
Ground Level Elev. <b>6610'</b>	Producing Formation <b>Paleozoic</b>	Pool <b>Wildcat</b>	Dedicated Acreage: <b>40</b> Acres	

- Outline the acreage dedicated to the subject well by colored pencil or hachure marks on the plat below.
- If more than one lease is dedicated to the well, outline each and identify the ownership thereof (both as to working interest and royalty).
- If more than one lease of different ownership is dedicated to the well, have the interests of all owners been consolidated by communitization, unitization, force-pooling, etc?

☒ Yes ☐ No If answer is "yes," type of consolidation **TO BE UNITIZED**

If answer is "no," list the owners and tract descriptions which have actually been consolidated. (Use reverse side of this form if necessary.)

No allowable will be assigned to the well until all interests have been consolidated (by communitization, unitization, forced-pooling, or otherwise) or until a non-standard unit, eliminating such interests, has been approved by the Commission.



CERTIFICATION

I hereby certify that the information contained herein is true and complete to the best of my knowledge and belief.

*Gliserio Rodriguez*

Name  
**Gliserio Rodriguez**

Position  
**Regulatory Agent**

Company  
**Peyton Yates**

Date  
**11/15/84**

I hereby certify that the well location shown on this plat was plotted from field notes of actual surveys made by me or under my supervision, and that the same is true and correct to the best of my knowledge and belief.

*William A. Billie*  
Date Surveyed  
**11/15/84**  
Professional Engineer  
and Land Surveyor  
**270**  
Certification  
**PROFESSIONAL ENGINEER**

PEYTON YATES  
La Mesa Unit #2  
2310 FSL - 2310 FEL  
Section 24 - T. 7 N. - R. 8 E.  
Santa Fe, County, New Mexico

In conjunction with Form 9-331C, Application for Permit to Drill subject well, Peyton Yates submits the following ten items of pertinent information in accordance with BLM requirements.

1. The gologic surface formation is Quaternary.
2. The estimated tops of geologic markers are as follows:

Tertiary Santa Fe Group	100'
Mesozoic Undif.	2700'
Paleozoic Undif.	3000'
Pennsylvanian, Upper	6100'
2nd Paleozoic Undif.	8200'
T.D	8300'

3. The estimated depths at which anticipated water, oil or gas formations are expected to be encountered.

Water: 100' - 150'

Oil or Gas: 3100', 6150', 8250'

4. Proposed Casing Program: See Form 9-331C.
5. Pressure Control Equipment. See Form 9-331C.
6. Mud Program. See Form 9-331C.
7. Auxilliary Equipment: Kelly Cock, pit level indicators and flow sensor equipment, sub with full-opening valve on floor, drill pipe connection.
8. Testing, Logging and Coring Program:

Samples: 10' samples caught out from under surface casing to TD.

DST's: As warranted.

Coring: None

Logging: FDC-CNL density, dual induction, dip meter, sonic log, litho densitycyberbook, and mud log.

9. No abnormal pressures or temperatures are anticipated.
10. Anticipated starting date. As soon as possible after approval.  
State Leases in unit are expiring 12/1/1984.

## MULTI-POINT SURFACE USE AND OPERATION PLAN

Peyton Yates

La Mesa Unit #2

2310' FSL - 2310' FEL

Section 24 - T. 17 N. - R. 8 E.

(Wildcat well)

This plan is submitted with Form 9-331C, Application for Permit to Drill, covering the above described well. The purpose of this plan is to described the location of the proposed well, the proposed construction activities and operations plan, the magnitude of surface disturbance involved and the procedures to be followed in rehabilitating the surface after completion of the operations, so that a complete appraisal can be made of the environmental effect associated with the operations.

### 1. EXISTING ROADS.

Exhibit A is a portion of a map showing the roads in the vicinity of the proposed location. This wellsite is located approximately 8.5 miles west of downtown Santa Fe, New Mexico. The access route to the location is indicated on the map.

#### DIRECTIONS.

1. Proceed 5 1/4 miles southwest on State Road 22 pass Agua Fria .2 of a mile.
2. Turn NW on to County Road 62 for 2.8 miles.
3. Then turn NE on to a two track road and follow it for 1/2 mile to the P/L. New road starts here continuing NE to location. Existing road will be bladed where needed..

### 2. PLANNED ACCESS ROAD.

- A. There will be approximately 4200' of new access road.
- B. The new road will be 12 feet in width (driving surface).
- C. The new road will be bladed with drainage on one side.
- D. The route of the raod is visible.

### 3. LOCATION OF EXISTING WELL.

- A. There is no drilling activity within a one-mile radius of the wellsite.

### 4. LOCATION OF EXISTING AND/OR PROPOSED FACILITIES.

- A. There are no production facilities on this lease at the present time.
- B. In the event that the well is productive, the necessary production facilities will be installed on the frilling pad. If the well is productive oil, a gas or diesel self-contained unit will be used to provide the necessary power. No power will be required if the well is productive gas.

5. LOCATION AND TYPE OF WATER SUPPLY.

- A. It is planned to drill the proposed well with a fresh water system. The water will be obtained from commercial sources and hauled by truck over the existing and proposed roads shown in Exhibit A.

6. SOURCE OF CONTRUCTION MATERIALS.

- A. No construction materials will be need. Location and road will be watered and bladed.

7. METHODS OF HANDLING WASTE DISPOSAL.

- A. Drill cuttings will be disposed of in the reserve pits.
- B. Drilling fluids will be allowed to evaporate in the reserve pits until the pits are dry.
- C. Water produced during operations will be collected in tanks until hauled to an approved disposal system, or separate disposal application will be submitted.
- D. Oil produced during operations will be stored in tanks until sold.
- E. Current laws and regulations pertaining to the disposal of human waste will be compiled with. Portable chemical toilets will be used.
- F. Trash, waste paper, garbage and junk will be buried in a separet trash pit and covered with a minimum of 24 inches dirt. All waste material will be contained to prevent scattering by the wind.
- G. All trash and debris will be bured or removed from the wellsite within 30 days after fininshing drilling and/or completion operations.

8. ANCILLARY FACILITIES.

- A. None required.

9. WELLSITE LAYOUT.

- A. Exhibit C shows the relative location and dimensions of the well pad, the reserve pits, etc.
- B. The location surface is slightly sloping to the NW.
- C. A 400' x 400' area has been staked and flagged.

10. PLANS FOR RESTORATION OF THE SURFACE.

- A. After fininshing drilling and/or completion operations, all equipment and other material not needed for further operations will be removed. The location will be cleaned of all trash and junk to leave the wellsite in as aesthetically pleasing a condition as possible.

- B. Unguarded pits, if any, containing fluids will be fenced until they have dried and leveled.
- C. If the proposed well is non-productive, all rehabilitation and/or vegetation requirements of the BLM will be complied with and accomplished as expeditiously as possible. All pits will be filled level within 90 days after abandonment.

11. OTHER INFORMATION

- A. Topography: The land surface in the vicinity of the wellsite is fairly flat. The immediate area of the wellsite is discussed above in paragraph 9B.
- B. Flora and Fauna: The vegetation on the wellsite consists of native grasses and miscellaneous mountainous growth. No wildlife was observed but the wildlife in the area probably include those typical of rolling mountains at 6 - 7000 feet. The area is used for cattle grazing.
- C. Waterways: None
- D. There are no inhabited dwellings in the vicinity of the proposed wellsite.
- E. Surface Ownership: The wellsite is a Federal surface and minerals

12. OPERATOR'S REPRESENTATIVE.

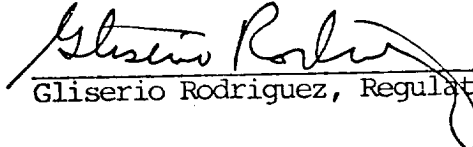
- A. The field representatives responsible for assuring compliance with the approved surface use plan are:

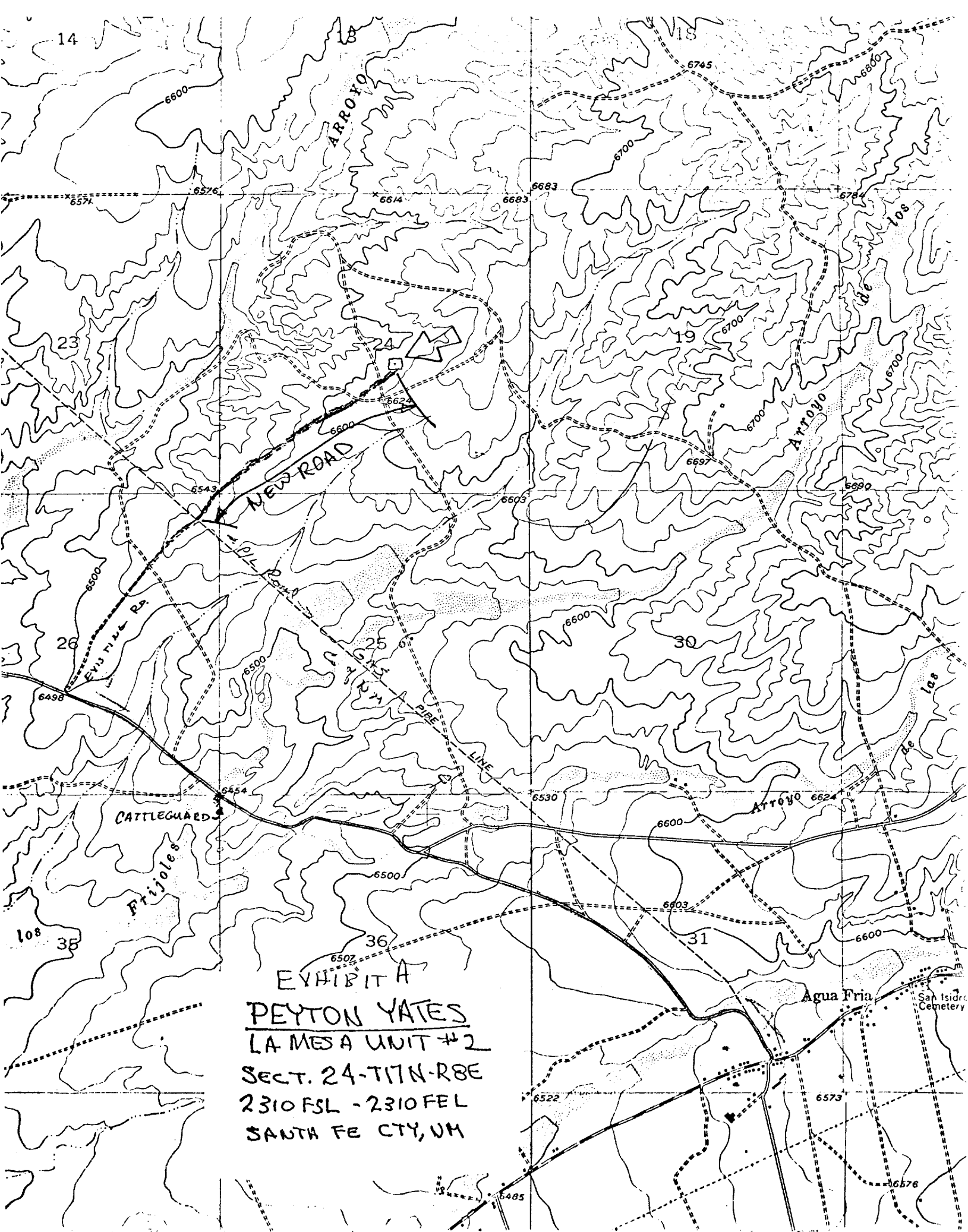
Gliserio "Rod" Rodriguez  
Peyton Yates  
207 S. 4th St.  
Artesia, NM 88210  
(505) 748-1331

13. CERTIFICATION.

I hereby certify that I, or persons under my direct supervision, have inspected the proposed drillsite and access route, that I am familiar with the conditions which presently exist: that the statements made in this plan are to the best of my knowledge, true and correct: and, that the work associated with the operations proposed herein will be performed by PEYTON YATES and its contractors and sub-contractors in conformity with this plan and the terms and conditions under which it is approved.

11-16-84  
Date

  
Gliserio Rodriguez, Regulatory Agent





T. 18 N.

T. 17 N.

T. 16 N.

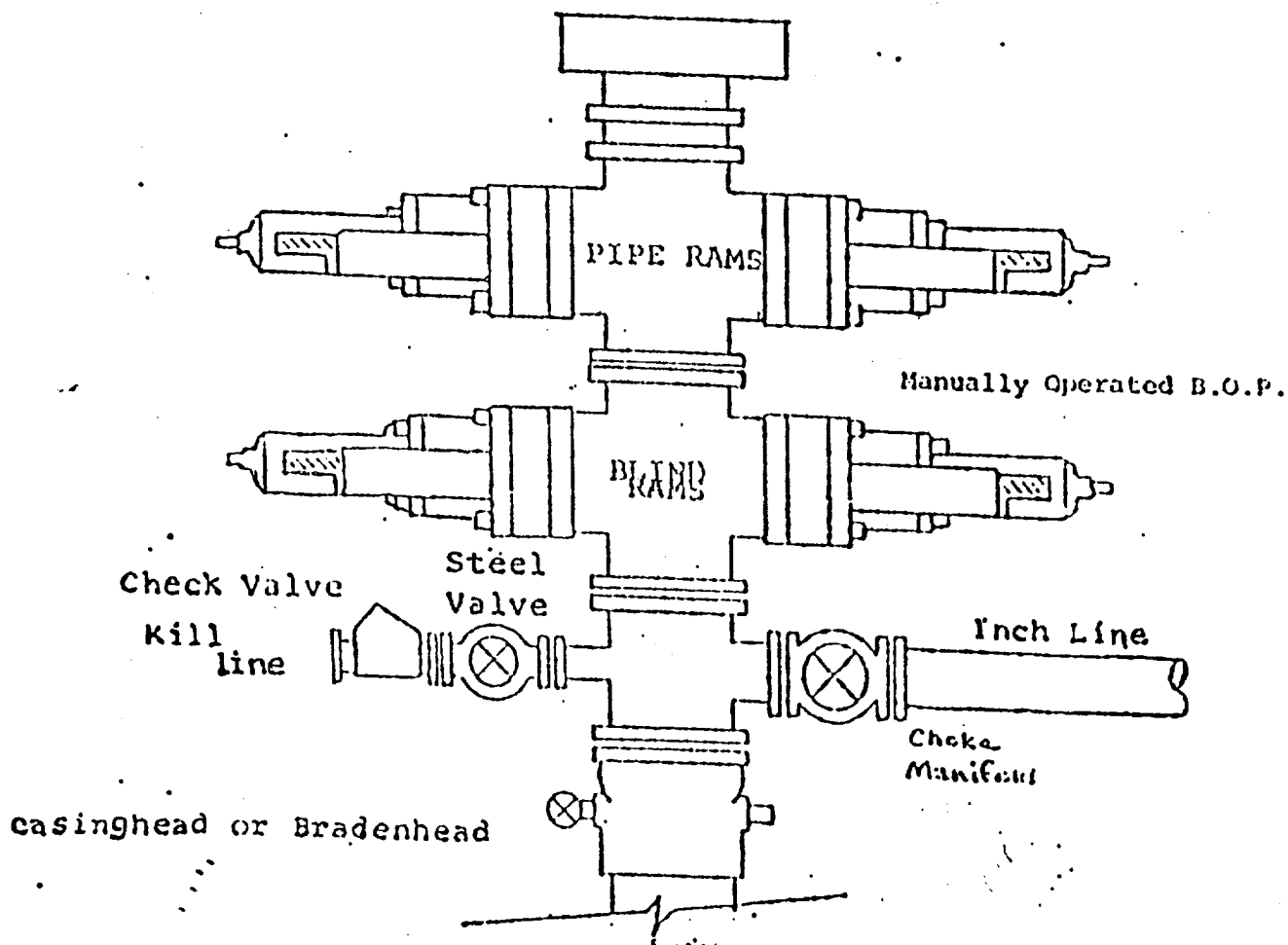
SANTA FE CTY, NM

27/2

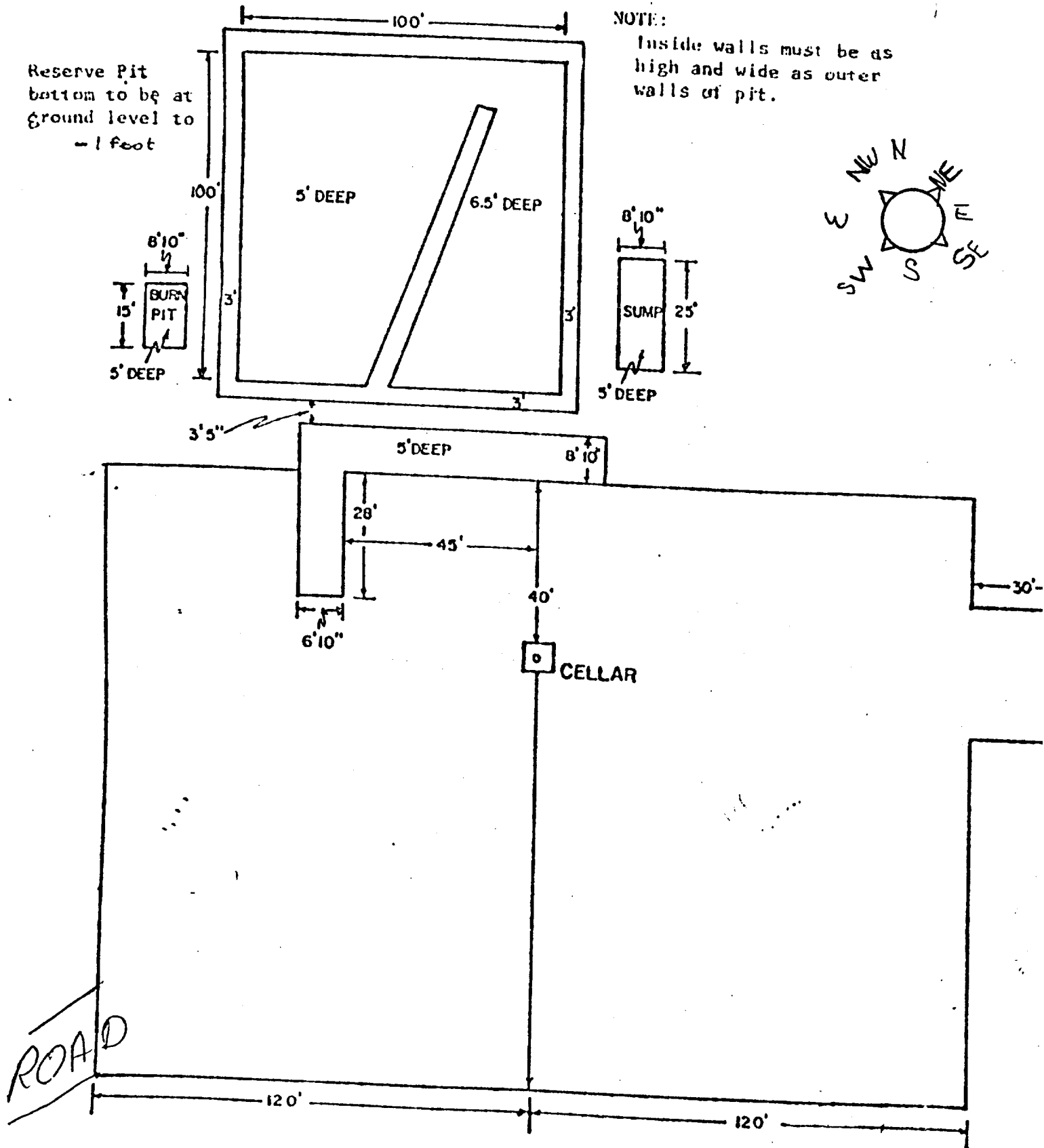
# EXHIBIT B

## BOP DIAGRAM

RATED 3000<sup>#</sup>



# Exhibit C



Confidential

SUBMIT IN TRIPLICATE\*

(Other instructions on  
reverse side)Form approved.  
Budget Bureau No. 42-R1425.UNITED STATES  
DEPARTMENT OF THE INTERIOR  
GEOLOGICAL SURVEY

## APPLICATION FOR PERMIT TO DRILL, DEEPEN, OR PLUG BACK

## 1a. TYPE OF WORK

DRILL ☒DEEPEN ☐PLUG BACK ☐

## b. TYPE OF WELL

OIL  
WELL ☒GAS  
WELL ☐OTHER ☐SINGLE  
ZONE ☐MULTIPLE  
ZONE ☐

## 2. NAME OF OPERATOR

Peyton Yates

## 3. ADDRESS OF OPERATOR

207 South Fourth St., Artesia, New Mexico 88210

## 4. LOCATION OF WELL (Report location clearly and in accordance with any State requirements.)\*

At surface

2310 FSL - 2310 FEL

At proposed prod. zone  
Same

## 14. DISTANCE IN MILES AND DIRECTION FROM NEAREST TOWN OR POST OFFICE\*

8.5 Miles West of Santa Fe

## 10. DISTANCE FROM PROPOSED\*

LOCATION TO NEAREST  
PROPERTY OR LEASE LINE, FT.  
(Also to nearest drlg. unit line, if any)

2310'

18. DISTANCE FROM PROPOSED LOCATION\*  
TO NEAREST WELL, DRILLING, COMPLETED,  
OR APPLIED FOR, ON THIS LEASE, FT.

19. PROPOSED DEPTH

8300' +

## 21. ELEVATIONS (Show whether DF, RT, GR, etc.)

6610' GL

## 23.

## PROPOSED CASING AND CEMENTING PROGRAM

appeal pursuant to 30 CFR 290,  
QUANTITY OF CEMENT

SIZE OF HOLE	SIZE OF CASING	WEIGHT PER FOOT	SETTING DEPTH	QUANTITY OF CEMENT
12 1/4"	10-3/4"	40.5#J-55	600'	350 SX Circulated
8-3/4"	7"	14#J-55	3500'	250 SX Circulated
6 1/2"	4 1/2"	9.5#J-55	TD	200 SX

We propose to drill and test the 2nd. Paleozoic Undif. and intermediate formations, approximately 600' of surface casing will be set and cement circulated to shut off gravel and caving, if any. If commercial production casing will be furn and cemented with adequate cover, perforated and stimulated as needed for production.

MUD PROGRAM: FW gel/LCM to 600', FWgel/driskpak to 3800', FW gel LCM starch to TD.

BOP PROGRAM: BOP's will be installed after setting the 10-3/4" and tested daily.

IN ABOVE SPACE DESCRIBE PROPOSED PROGRAM: If proposal is to deepen or plug back, give data on present productive zone and proposed new productive zone. If proposal is to drill or deepen directionally, give pertinent data on subsurface locations and measured and true vertical depths. Give blowout preventer program, if any.

## 24.

SIGNED

TITLE Regulatory Agent

(This space for Federal or State office use)

PERMIT NO.

APPROVAL DATE

APPROVED BY

TITLE

CONDITIONS OF APPROVAL, IF ANY:

NOV 27 1984

DATE

FOR AREA MANAGER

FARMINGTON RESOURCE AREA

\*See Instructions On Reverse Side

NMOCC - SANTA FE

**NEW MEXICO OIL CONSERVATION COMMISSION  
WELL LOCATION AND ACREAGE DEDICATION PLAT**

**Confidential**

Form C-102  
Supersedes C-128  
Effective 1-1-65

All distances must be from the outer boundaries of the Section.

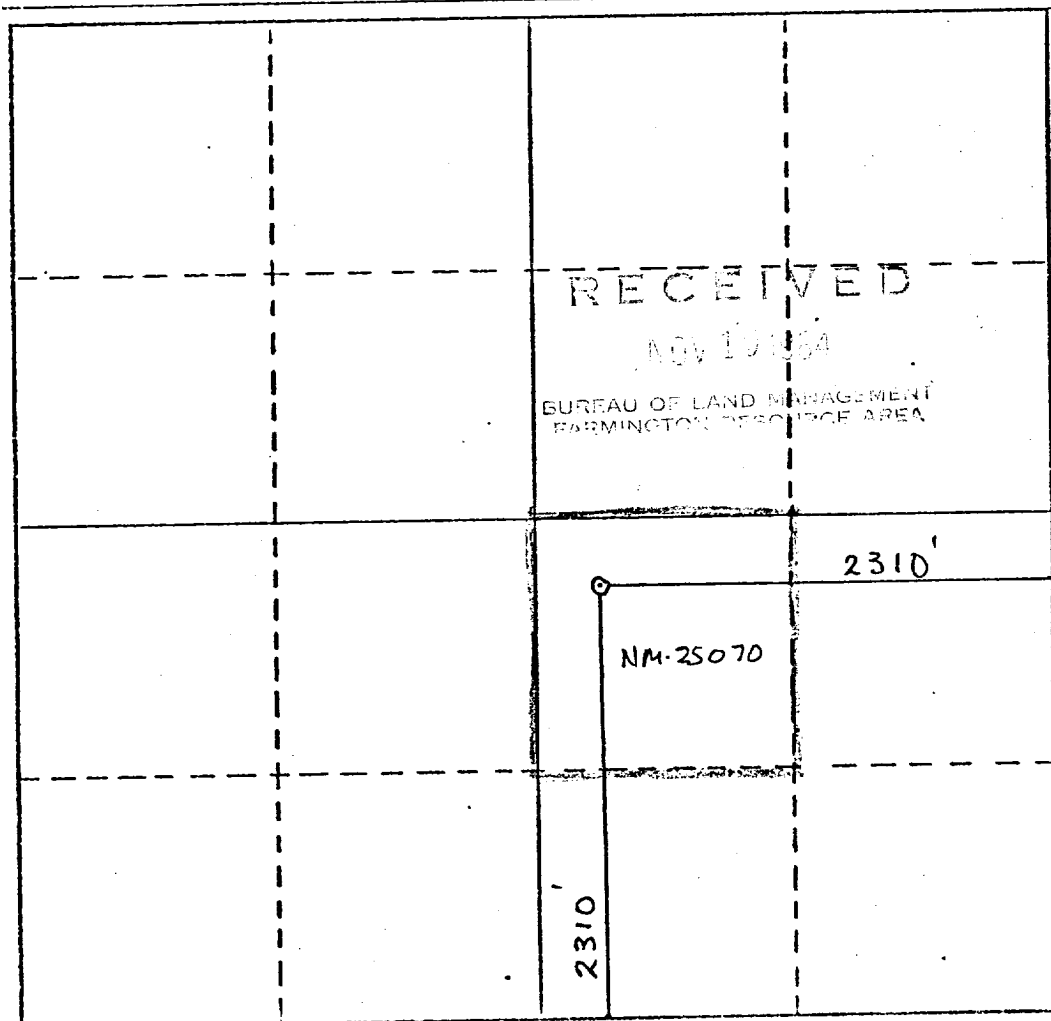
Operator <b>PEYTON YATES</b>		Lease <b>LA MESA UNIT</b>			Well No. <b>2</b>
Init Letter <b>J</b>	Section <b>24</b>	Township <b>17 North</b>	Range <b>8 East</b>	County <b>Santa Fe</b>	
Actual Footage Location of Well:					
<b>2310</b>	feet from the	<b>SOUTH</b>	line and	<b>2310</b>	feet from the
					<b>EAST</b>
Ground Level Elev. <b>6610'</b>	Producing Formation <b>Paleozoic</b>		Pool <b>Wildcat</b>	Dedicated Acreage: <b>40</b> Acres	

1. Outline the acreage dedicated to the subject well by colored pencil or hachure marks on the plat below.
2. If more than one lease is dedicated to the well, outline each and identify the ownership thereof (both as to working interest and royalty).
3. If more than one lease of different ownership is dedicated to the well, have the interests of all owners been consolidated by communitization, unitization, force-pooling, etc?

☒ Yes    ☐ No    If answer is "yes," type of consolidation **TO BE UNITIZED**

If answer is "no," list the owners and tract descriptions which have actually been consolidated. (Use reverse side of this form if necessary.) \_\_\_\_\_

No allowable will be assigned to the well until all interests have been consolidated (by communitization, unitization, forced-pooling, or otherwise) or until a non-standard unit, eliminating such interests, has been approved by the Commission.



**CERTIFICATION**

I hereby certify that the information contained herein is true and complete to the best of my knowledge and belief.

*Gliserio Rodriguez*  
Name

Gliserio Rodriguez

Position

Regulatory Agent

Company

Peyton Yates

Date

11/15/84

I hereby certify that the well location shown on this plat was plotted from field notes of actual surveys made by me or under my supervision, and that the same is true and correct to the best of my knowledge and belief.

*N. A. BILLIE*  
Date Surveyed

*[Signature]*  
Registered Professional Engineer  
and State Land Surveyor

*[Stamp]*  
CERTIFICATE OF PROFESSIONAL ENGINEER

PEYTON YATES  
La Mesa Unit #2  
2310 FSL - 2310 FEL  
Section 24 - T. 7 N. - R. 8 E.  
Santa Fe, County, New Mexico

In conjunction with Form 9-331C, Application for Permit to Drill subject well, Peyton Yates submits the following ten items of pertinent information in accordance with BLM requirements.

1. The geologic surface formation is Quaternary.
2. The estimated tops of geologic markers are as follows:

Tertiary Santa Fe Group	100'
Mesozoic Undif.	2700'
Paleozoic Undif.	3000'
Pennsylvanian, Upper	6100'
2nd Paleozoic Undif.	8200'
T.D	8300'

3. The estimated depths at which anticipated water, oil or gas formations are expected to be encountered.

Water: 100' - 150'

Oil or Gas: 3100', 6150', 8250'

4. Proposed Casing Program: See Form 9-331C.
5. Pressure Control Equipment. See Form 9-331C.
6. Mud Program. See Form 9-331C.
7. Auxilliary Equipment: Kelly Cock, pit level indicators and flow sensor equipment, sub with full-opening valve on floor, drill pipe connection.
8. Testing, Logging and Coring Program:

Samples: 10' samples caught out from under surface casing to TD.

DST's: As warranted.

Coring: None

Logging: FDC-CNL density, dual induction, dip meter, sonic log, litho densitycyberbook, and mud log.

9. No abnormal pressures or temperatures are anticipated.
10. Anticipated starting date. As soon as possible after approval.  
State Leases in unit are expiring 12/1/1984.

## MULTI-POINT SURFACE USE AND OPERATION PLAN

Peyton Yates  
La Mesa Unit #2  
2310' FSL - 2310' FEL  
Section 24 - T. 17 N. - R. 8 E.  
(Wildcat well)

This plan is submitted with Form 9-331C, Application for Permit to Drill, covering the above described well. The purpose of this plan is to described the location of the proposed well, the proposed construction activities and operations plan, the magnitude of surface disturbance involved and the procedures to be followed in rehabilitating the surface after completion of the operations, so that a complete appraisal can be made of the environmental effect associated with the operations.

### 1. EXISTING ROADS.

Exhibit A is a portion of a map showing the roads in the vicinity of the proposed location. This wellsite is located approximately 8.5 miles west of downtown Santa Fe, New Mexico. The access route to the location is indicated on the map.

#### DIRECTIONS.

1. Proceed 5 1/4 miles southwest on State Road 22 pass Agua Fria .2 of a mile.
2. Turn NW on to County Road 62 for 2.8 miles.
3. Then turn NE on to a two track road and follow it for 1/2 mile to the P/L. New road starts here continuing NE to location. Existing road will be bladed where needed..

### 2. PLANNED ACCESS ROAD.

- A. There will be approximately 4200' of new access road.
- B. The new road will be 12 feet in width (driving surface).
- C. The new road will be bladed with drainage on one side.
- D. The route of the raod is visible.

### 3. LOCATION OF EXISTING WELL.

- A. There is no drilling activity within a one-mile radius of the wellsite.

### 4. LOCATION OF EXISTING AND/OR PROPOSED FACILITIES.

- A. There are no production facilities on this lease at the present time.
- B. In the event that the well is productive, the necessary production facilities will be installed on the frilling pad. If the well is productive oil, a gas or diesel self-contained unit will be used to provide the necessary power. No power will be required if the well is productive gas.

5. LOCATION AND TYPE OF WATER SUPPLY.

- A. It is planned to drill the proposed well with a fresh water system. The water will be obtained from commercial sources and hauled by truck over the existing and proposed roads shown in Exhibit A.

6. SOURCE OF CONSTRUCTION MATERIALS.

- A. No construction materials will be need. Location and road will be watered and bladed.

7. METHODS OF HANDLING WASTE DISPOSAL.

- A. Drill cuttings will be disposed of in the reserve pits.
- B. Drilling fluids will be allowed to evaporate in the reserve pits until the pits are dry.
- C. Water produced during operations will be collected in tanks until hauled to an approved disposal system, or separate disposal application will be submitted.
- D. Oil produced during operations will be stored in tanks until sold.
- E. Current laws and regulations pertaining to the disposal of human waste will be compiled with. Portable chemical toilets will be used.
- F. Trash, waste paper, garbage and junk will be buried in a separate trash pit and covered with a minimum of 24 inches dirt. All waste material will be contained to prevent scattering by the wind.
- G. All trash and debris will be buried or removed from the wellsite within 30 days after finishing drilling and/or completion operations.

8. ANCILLARY FACILITIES.

- A. None required.

9. WELLSITE LAYOUT.

- A. Exhibit C shows the relative location and dimensions of the well pad, the reserve pits, etc.
- B. The location surface is slightly sloping to the NW.
- C. A 400' x 400' area has been staked and flagged.

10. PLANS FOR RESTORATION OF THE SURFACE.

- A. After finishing drilling and/or completion operations, all equipment and other material not needed for further operations will be removed. The location will be cleaned of all trash and junk to leave the wellsite in as aesthetically pleasing a condition as possible.



- B. Unguarded pits, if any, containing fluids will be fenced until they have dried and leveled.
- C. If the proposed well is non-productive, all rehabilitation and/or vegetation requirements of the BLM will be complied with and accomplished as expeditiously as possible. All pits will be filled level within 90 days after abandonment.

11. OTHER INFORMATION

- A. Topography: The land surface in the vicinity of the wellsite is fairly flat. The immediate area of the wellsite is discussed above in paragraph 9B.
- B. Flora and Fauna: The vegetation on the wellsite consists of native grasses and miscellaneous mountainous growth. No wildlife was observed but the wildlife in the area probably include those typical of rolling mountains at 6 - 7000 feet. The area is used for cattle grazing.
- C. Waterways: None
- D. There are no inhabited dwellings in the vicinity of the proposed wellsite.
- E. Surface Ownership: The wellsite is a Federal surface and minerals

12. OPERATOR'S REPRESENTATIVE.

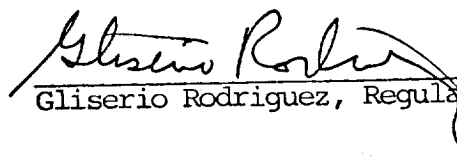
- A. The field representatives responsible for assuring compliance with the approved surface use plan are:

Gliserio "Rod" Rodriguez  
Peyton Yates  
207 S. 4th St.  
Artesia, NM 88210  
(505) 748-1331

13. CERTIFICATION.

I hereby certify that I, or persons under my direct supervision, have inspected the proposed drillsite and access route, that I am familiar with the conditions which presently exist: that the statements made in this plan are to the best of my knowledge, true and correct: and, that the work associated with the operations proposed herein will be performed by PEYTON YATES and its contractors and sub-contractors in conformity with this plan and the terms and conditions under which it is approved.

11-16-84  
Date

  
Gliserio Rodriguez, Regulatory Agent

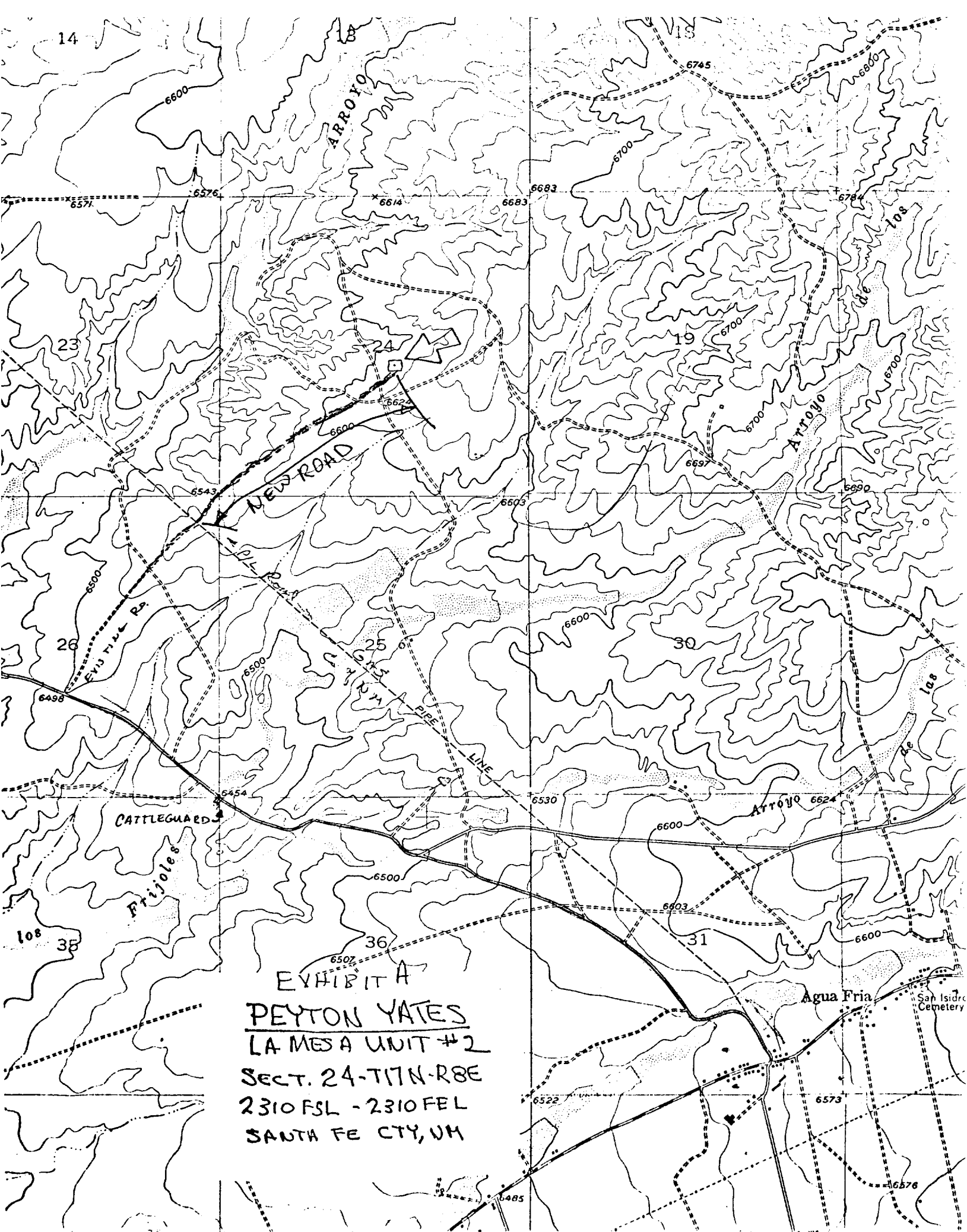
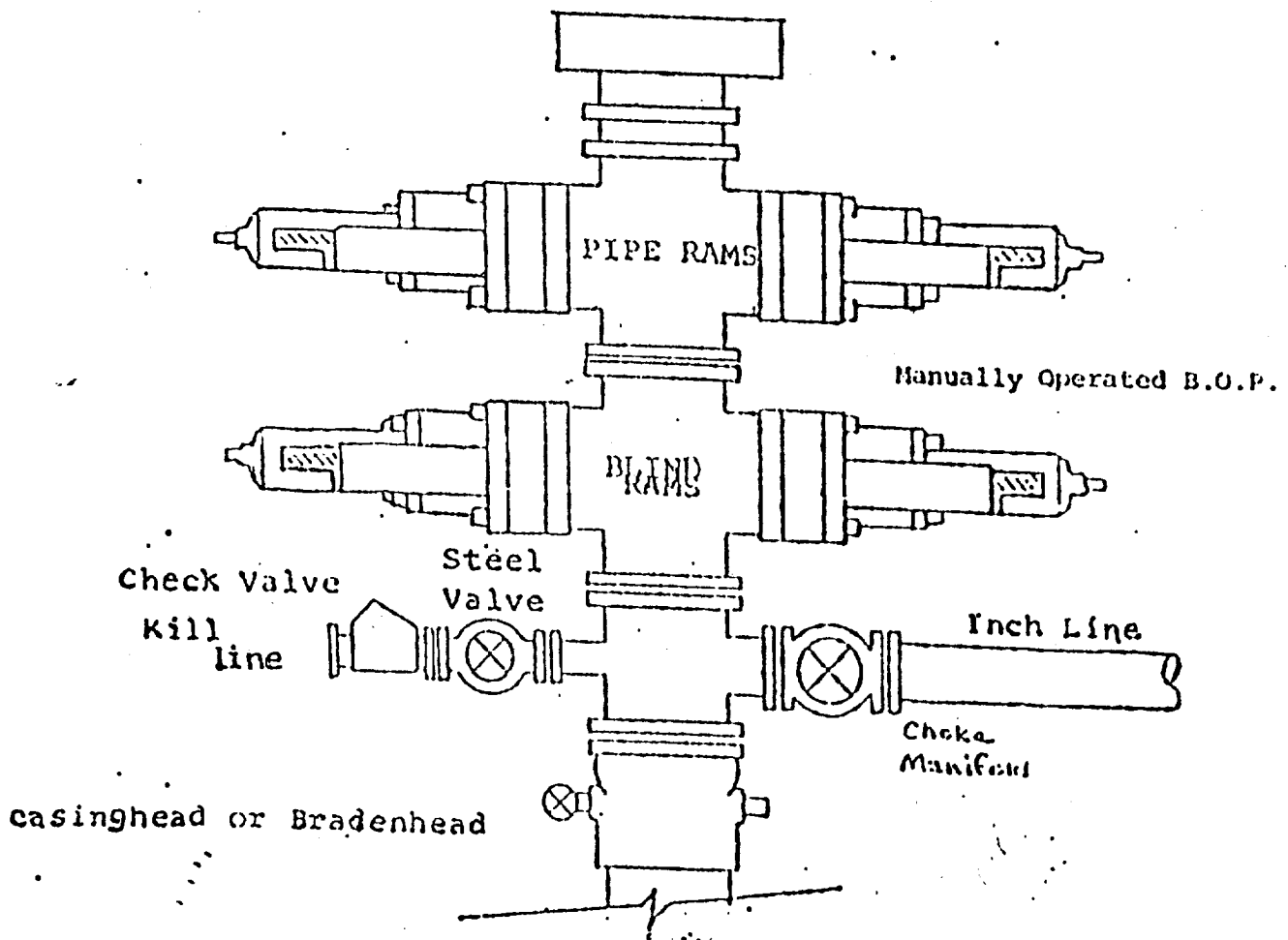


EXHIBIT A'  
PEYTON YATES  
LA MESA UNIT #2  
SECT. 24-T17N-R8E  
2310 FSL-2310 FEL  
SANTA FE CTY, NM

# EXHIBIT B

## BDP DIAGRAM

RATED 3000<sup>psi</sup>



# Exhibit C

