

API # 30-05-20010

SUBMIT IN TRIPPLICATE*
(Other instructions on
reverse side)

Form approved.
Budget Bureau No. 1004-0136
Expires August 31, 1985

UNITED STATES
DEPARTMENT OF THE INTERIOR
BUREAU OF LAND MANAGEMENT

APPLICATION FOR PERMIT TO DRILL, DEEPEN, OR PLUG BACK

1a. TYPE OF WORK

DRILL ☒

DEEPEN ☐

PLUG BACK ☐

b. TYPE OF WELL

OIL
WELL ☒

GAS
WELL ☐

OTHER

SINGLE
ZONE ☐

MULTIPLE
ZONE ☒

2. NAME OF OPERATOR

JAMES K. ANDERSON, INC.

3. ADDRESS OF OPERATOR

13760 NOEL ROAD, STE. 325, DALLAS, TX 75240

4. LOCATION OF WELL (Report location clearly and in accordance with any State requirements.)*

At surface

3100' FEL and 300' FSL Section 1, 4S-3E

At proposed prod. zone

SAME

14. DISTANCE IN MILES AND DIRECTION FROM NEAREST TOWN OR POST OFFICE*

18 Miles East Southeast from Socorro, New Mexico

15. DISTANCE FROM PROPOSED*

LOCATION TO NEAREST
PROPERTY OR LEASE LINE, FT.
(Also to nearest drlg. unit line, if any)

3100'

16. NO. OF ACRES IN LEASE

960

17. NO. OF ACRES ASSIGNED
TO THIS WELL

40

18. DISTANCE FROM PROPOSED LOCATION*
TO NEAREST WELL, DRILLING, COMPLETED,
OR APPLIED FOR, ON THIS LEASE, FT.

N/A

19. PROPOSED DEPTH

4,000'

20. ROTARY OR CABLE TOOLS

Rotary

21. ELEVATIONS (Show whether DF, RT, GR, etc.)

5475' GR

22. APPROX. DATE WORK WILL START*

November 30, 1988

23.

PROPOSED CASING AND CEMENTING PROGRAM

SIZE OF HOLE	SIZE OF CASING	WEIGHT PER FOOT	SETTING DEPTH	QUANTITY OF CEMENT
11"	8 5/8"	24# J-55	600'	250 SX to SURFACE
7 7/8"	4 1/2"	10.50# J-55	TD	475 SX back to 2000' with 50% excess; if caliper run-then fill up calculation plus 15%

- 1) Log B.O.P. checks in daily drilling reports and drill 7 7/8" hole to 4000'.
- 2) Run Drill Stem tests if warranted and run 4 1/2" casing if productive.
- 3) Run logs as needed and perforate and stimulate as needed.

EXHIBITS ATTACHED:

"A" Location and Elevation Plat

"B" Surface use Program

"C" Drilling Program

"D" Existing Access Road Map

"E" Drill Pad Profile, Constructed Access Road Plan and Profile

"F" Production Facilities

"G" Drill Rig Layout

"H" Blowout Preventer Diagram

"I" Archeological Survey

IN ABOVE SPACE DESCRIBE PROPOSED PROGRAM: If proposal is to deepen or plug back, give data on present productive zone and proposed new productive zone. If proposal is to drill or deepen directionally, give pertinent data on subsurface locations and measured and true vertical depths. Give blowout preventer program, if any.

24.

SIGNED

James K. Anderson

TITLE

LAND MANAGER

DATE

11-2-88

(This space for Federal or State office use)

PERMIT NO.

APPROVAL DATE

APPROVED BY

TITLE

DATE

CONDITIONS OF APPROVAL, IF ANY:

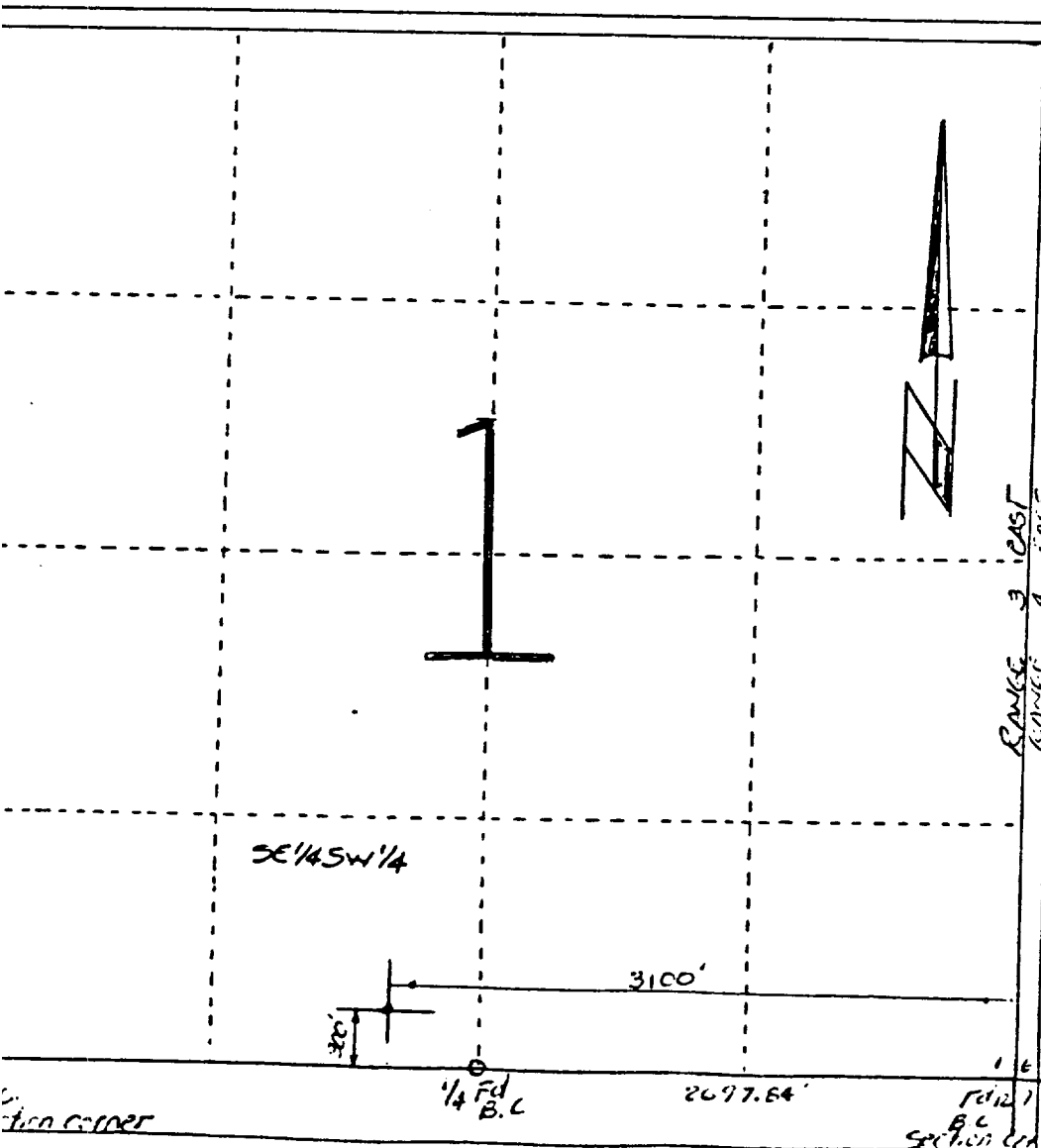
*See Instructions On Reverse Side

Title 18 U.S.C. Section 1001, makes it a crime for any person knowingly and willfully to make to any department or agency of the United States any false, fictitious or fraudulent statements or representations as to any matter within its jurisdiction.

EXHIBIT "A"

All distances must be from the outer boundaries of the Section.

Operator		Lease		Well No.	
JAMES K. ANDERSON, INC.		JAMES K. ANDERSON, INC.		BUN NM 4530 1	
Unit Letter	Section	Township	Range	County	
0	1	4S	3E	Socorro Co., NM	
Actual Footage Location of Well:					
3100.0 feet from the <u>EAST</u> line and 300.0 feet from the <u>SOUTH</u> line					
Ground Level Elev.		Producing Formation		Pool	
5475		EST. PENN.		Dedicated Acreage:	
					40 Acres



CERTIFICATION

I hereby certify that the information contained herein is true and complete to the best of my knowledge and belief.

LUPE V. JOHNS
Name

SURVEY CREW CHIEF
Position

P.O. BOX 4
Company

JULY 21, 1968
Date

I hereby certify that the well location shown on this plat was plotted from field notes of actual surveys made by me or under my supervision, and that the same is true and correct to the best of my knowledge and belief.

JULY 21, 1968
Date Surveyed
Raymond Lee Dennis Jr.
Registered Professional
Engineer or Land Surveyor

Certified Professional