

**NEW MEXICO OIL CONSERVATION COMMISSION
WELL LOCATION AND ACREAGE DEDICATION PLAT**

RECEIVED

MAY 14 1980

Form C-102
Supersedes C-128
Effective 1-1-85

All distances must be from the outer boundaries of the Section.

CONSERVATION DIVISION

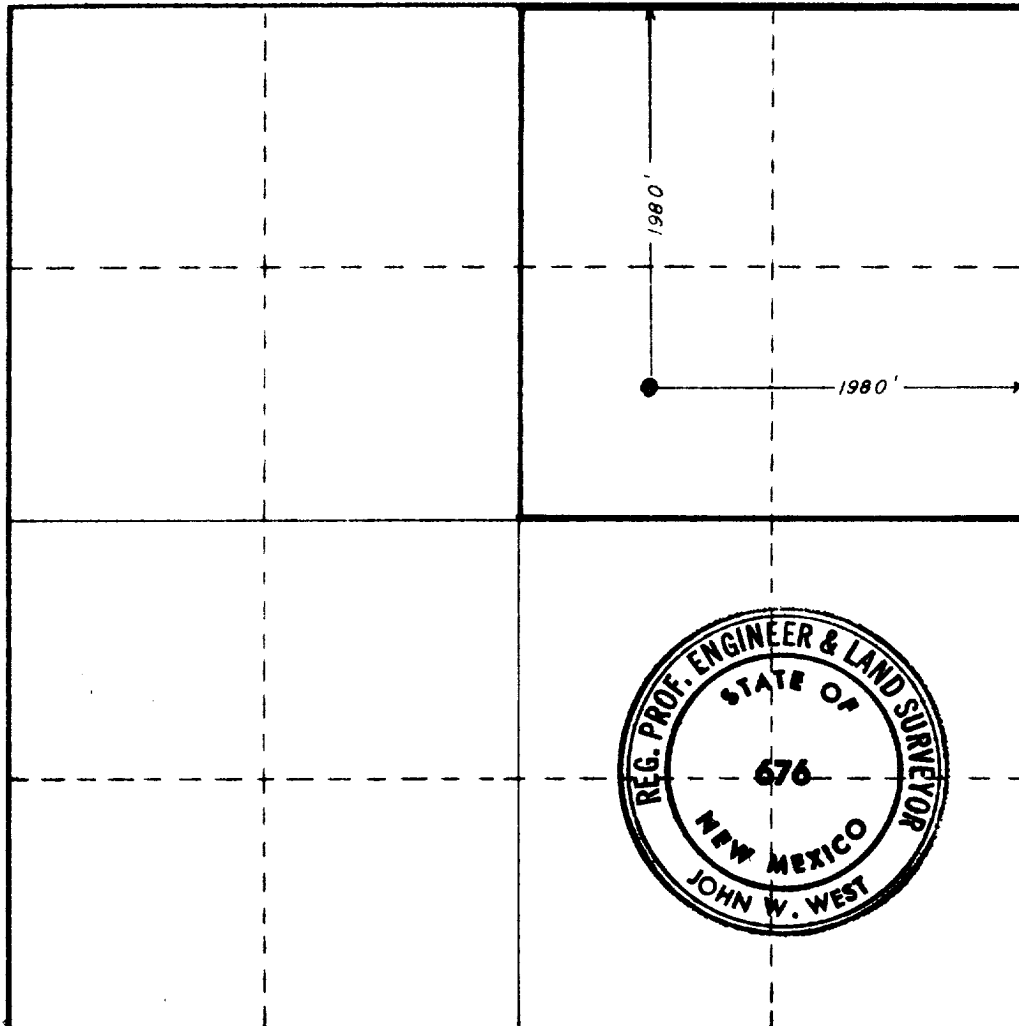
Operator Amerada Hess Corporation			Lease Wilkinson			SANTA FE			Well No. 1		
Unit G	Section 4	Township 29 North		Range 31 East	County Union						
Actual Footage Location of Well: <div style="display: flex; justify-content: space-between;"> 1980 feet from the North line and 1980 feet from the East line </div>											
Ground Level Elev. 6027.7		Producing Formation Pre-Cambrian			Pool Wildcat			Dedicated Acreage: 160 Acres			

1. Outline the acreage dedicated to the subject well by colored pencil or hachure marks on the plat below.
2. If more than one lease is dedicated to the well, outline each and identify the ownership thereof (both as to working interest and royalty).
3. If more than one lease of different ownership is dedicated to the well, have the interests of all owners been consolidated by communitization, unitization, force-pooling, etc?

☐ Yes ☐ No If answer is "yes," type of consolidation N/A

If answer is "no," list the owners and tract descriptions which have actually been consolidated. (Use reverse side of this form if necessary.) _____

No allowable will be assigned to the well until all interests have been consolidated (by communitization, unitization, forced-pooling, or otherwise) or until a non-standard unit, eliminating such interests, has been approved by the Commission.



CERTIFICATION

I hereby certify that the information contained herein is true and complete to the best of my knowledge and belief.

H.O. Porter H.O. Porter

Name
Supv. Drilling Admin. Svcs.

Position
Amerada Hess Corporation

Company
May 12, 1980
Date

I hereby certify that the well location shown on this plat was plotted from field notes of actual surveys made by me or under my supervision, and that the same is true and correct to the best of my knowledge and belief.

Date Surveyed
May 6, 1980

Registered Professional Engineer
and/or Land Surveyor

John W. West
 Certificate No. **JOHN W. WEST 676**
PATRICK A. ROMERO 6665
Ronald J. Eideen 3239

