

NO. OF COPIES RECEIVED
DISTRIBUTION
SANTA FE
FILE
U.S.G.S.
LAND OFFICE
OPERATOR

NEW MEXICO OIL CONSERVATION COMMISSION

API # 30-059-20044

Form O-101  
Revised 1-1-55

1. Indicate Type of Lease  
STATE ☐ FEE ☒

2. Oil & Gas Lease No.

APPLICATION FOR PERMIT TO DRILL, DEEPEN, OR PLUG BACK

1a. Type of Work b. Type of Well OIL WELL <input type="checkbox"/> GAS WELL <input type="checkbox"/> OTHER <input checked="" type="checkbox"/> Carbon Dioxide		DRILL <input checked="" type="checkbox"/> DEEPEN <input type="checkbox"/> PLUG BACK <input type="checkbox"/>		3. Unit Agreement Name	
2. Name of Operator Texaco Inc.		4. Firm or Lease Name Springhill Corp. "B"		5. Well No. 1	
3. Address of Operator P. O. Box 3109 - Midland, Texas 79702		6. Field and Pool, or Wildcat Wildcat		7. County Union	
4. Location of Well UNIT LETTER F LOCATED 1980 FEET FROM THE North AND 1980 FEET FROM THE West LINE OF SEC. 1 T. 28-N R. 30-E		8. Rotary or C.T. Rotary		9. Approx. Date Work will start July 15, 1980	
21. Elevations (Show whether D.R., K.I., etc.) 6097' Gr.		22. Cement 2530' Granite Wash		23. Proposed Casing and Cement Program	

SIZE OF HOLE	SIZE OF CASING	WEIGHT PER FOOT	SETTING DEPTH	SACKS OF CEMENT	EST. TOP
12-1/4"	8-5/8"	24# K-55 STC	580	325	Circulate
7-7/8"	5-1/2"	14# K-55 STC	2530	825	Circulate

Surface Casing : 325 Sxs. Class "C" w/2% CaCl<sub>2</sub> (14.8 ppg, 1.32 ft<sup>3</sup>/sx).

Production Casing: 825 Sxs. Class "C" w/9.5# Salt, 5# Gilsonite/sx.  
(15.14 ppg, 1.38 ft<sup>3</sup>/sx).

COLLECT AND CORK SAMPLES FOR  
NEW MEXICO OIL FIELD FILES, SOCORRO  
AT AT LEAST TEN FOOT INTERVALS

OIL CONSERVATION COMMISSION  
SANTA FE

OIL CONSERVATION COMMISSION TO BE NOTIFIED  
WITHIN 24 HOURS OF BEGINNING OPERATIONS

APPROVAL VALID FOR 40 DAYS  
PERMIT EXPIRES 9-8-80  
UNLESS DRILLING UNDERWAY

IN ABOVE SPACE DESCRIBE PROPOSED WORK, SHOW LOCATION OF PROPOSED WELL, AND PROPOSED PRODUCTION ZONE AND PROPOSED NEW PRODUCTION ZONE.

I hereby certify that the information above is true and correct.

Signed Dale Holloman

Assistant Division  
Petroleum Engineer

June 5, 1980

APPROVED BY Carl Ulvog  
CONDITIONS OF APPROVAL, IF ANY:

SENIOR PETROLEUM GEOLOGIST

DATE 6/10/80

**NEW MEXICO OIL CONSERVATION COMMISSION  
WELL LOCATION AND ACREAGE DEDICATION PLAT**

Form C-102  
Supersedes C-128  
Effective 1-1-65

All distances must be from the outer boundaries of the Section.

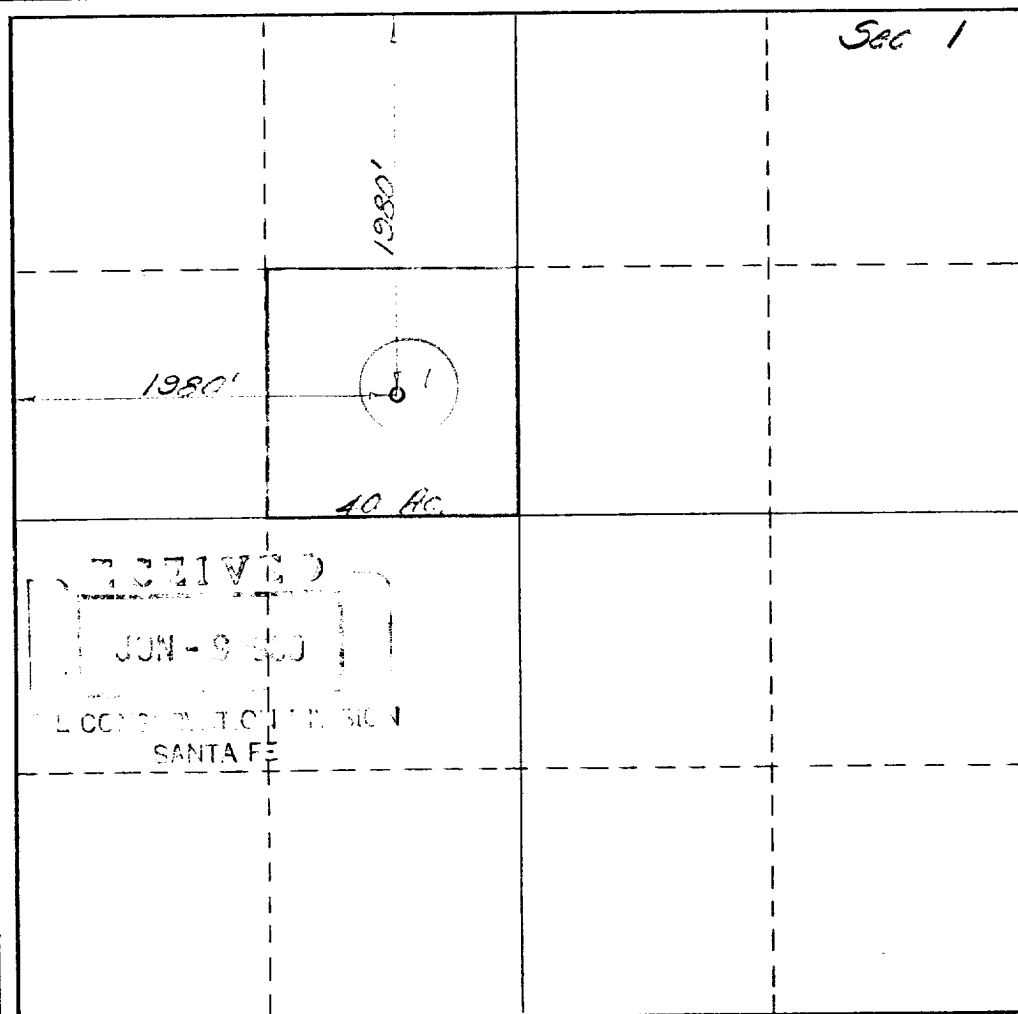
Operator <b>Texaco Inc.</b>			Lease <b>Springhill Corp. "B" NCT-1</b>		Well No. <b>1</b>
Unit Letter <b>F</b>	Section <b>1</b>	Township <b>T-28-N</b>	Range <b>R-30-E</b>	County <b>Union</b>	
Actual Footage Location of Well: <div style="display: flex; justify-content: space-between;"> <span><b>1980</b> feet from the <b>North</b> line and</span> <span><b>1980</b> feet from the <b>West</b> line</span> </div>					
Ground Level Elev. <b>6097'</b>	Producing Formation <b>Granite Wash</b>	Pool <b>Wildcat</b>		Dedicated Acreage: <b>40</b> Acres	

1. Outline the acreage dedicated to the subject well by colored pencil or hachure marks on the plat below.
2. If more than one lease is dedicated to the well, outline each and identify the ownership thereof (both as to working interest and royalty).
3. If more than one lease of different ownership is dedicated to the well, have the interests of all owners been consolidated by communitization, unitization, force-pooling, etc?

☐ Yes    ☐ No    If answer is "yes," type of consolidation \_\_\_\_\_

If answer is "no," list the owners and tract descriptions which have actually been consolidated. (Use reverse side of this form if necessary.) \_\_\_\_\_

No allowable will be assigned to the well until all interests have been consolidated (by communitization, unitization, forced-pooling, or otherwise) or until a non-standard unit, eliminating such interests, has been approved by the Commission.



**CERTIFICATION**

I hereby certify that the information contained herein is true and complete to the best of my knowledge and belief.

*B. L. Eiland*

Name

**B. L. Eiland**

Position

**Division Surveyor**

Company

**Texaco Inc.**

Date

**June 5, 1980**

I hereby certify that the well location shown on this plat was plotted from field notes of actual surveys made by me or under my supervision, and that the same is true and correct to the best of my knowledge and belief.

**May 31, 1980**

Date Surveyed

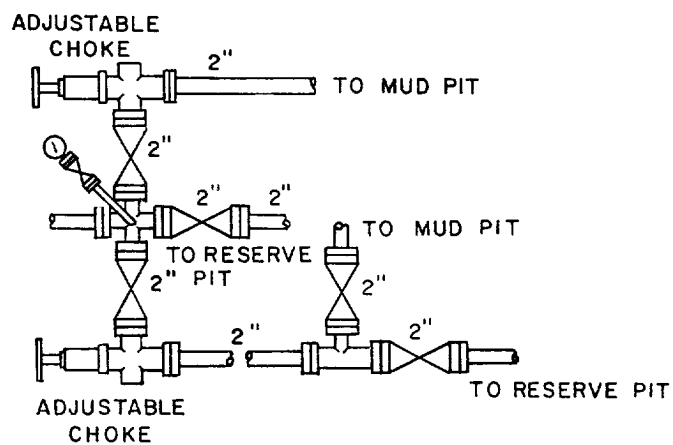
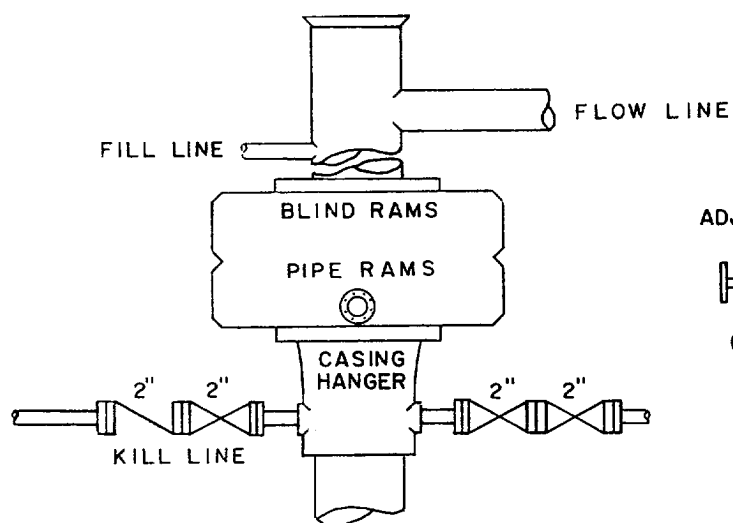
Registered Professional Engineer and/or Land Surveyor

*B. L. Eiland*  
**B. L. Eiland**

Certificate No.

**4386**

0 330 660 990 1320 1650 1980 2310 2640 2000 1500 1000 500 0



FOR SERVICE 2 M, SCREWED CONNECTIONS MAY BE USED INSTEAD OF FLANGED CONNECTIONS.



TEXACO, INC.  
PRODUCING DEPARTMENT-U.S. (EAST)  
MIDLAND, TEXAS



SCALE:	DATE	EST. NO.	DRG. NO.
DRAWN BY JWD			
CHECKED BY RDW			
APPROVED BY			

EXHIBIT "A"