

NO. OF COPIES RECEIVED	
DISTRIBUTION	
SANTA FE	
FILE	
U.S.G.S.	
LAND OFFICE	
OPERATOR	

# NEW MEXICO OIL CONSERVATION COMMISSION

SEP 24 1980

Form C-101  
Revised 1-7-65  
OIL CONSERVATION  
SANTA FE

API # 30-059-20055

5A. Indicate Type of Lease

STATE ☐ FEE ☒

5. State Oil & Gas Lease No.

7. Unit Agreement Name

8. Farm or Lease Name

Hutcherson B

9. Well No.

12

10. Field and Pool, or Wildcat

Und. Tubb

12. County

Union

19. Proposed Depth

2500'

19A. Formation

Tubb

20. Rotary or C.T.

Rotary

21. Elevations (Show whether DT, KT, etc.)

4690' FL

21A. Kind & Status Plug. Bond

Blanket-on-file

21B. Drilling Contractor

NA

22. Approx. Date Work will start

10-15-80

## PROPOSED CASING AND CEMENT PROGRAM

SIZE OF HOLE	SIZE OF CASING	WEIGHT PER FOOT	SETTING DEPTH	SACKS OF CEMENT	EST. TOP
11" or 12 1/4"	8-5/8"	24#	700'	Circ.	Surf.
7-7/8"	5-1/2"	14#	2500'	Tie back to 8-5/8"	Bottom 8-5/8"

Propose to drill and equip well in the Tubb formation. After reaching TD, logs will be run and evaluated. Perforate and stimulate as necessary in attempting commercial production.

MUD PROGRAM: 0'- 700' Native mud and fresh water  
700'- TD Commercial mud with minimum properties for safe hole conditions.

OIL CONSERVATION COMMISSION TO BE NOTIFIED  
BOP ATTACHED WITHIN 24 HOURS OF BEGINNING OPERATIONS  
Gas is not dedicated

APPROVAL VALID FOR 90 DAYS  
PERMIT EXPIRES 12-24-80  
UNLESS DRILLING UNDERWAY

0+2-NMOCD, SF 1-Hou 1-Susp 1-LBG 1-W. Stafford, Hou

IN ABOVE SPACE DESCRIBE PROPOSED PROGRAM: IF PROPOSAL IS TO DEEPEN OR PLUG BACK, GIVE DATA ON PRESENT PRODUCTIVE ZONE AND PROPOSED NEW PRODUCTIVE ZONE. GIVE BLOWOUT PREVENTER PROGRAM, IF ANY.

I hereby certify that the information above is true and complete to the best of my knowledge and belief.

Signed Bob Davis Title Administrative Analyst Date 9-23-80

(This space for State Use)

APPROVED BY Carl Ulvog TITLE SENIOR PETROLEUM GEOLOGIST DATE 9/25/80

CONDITIONS OF APPROVAL, IF ANY:

COLLECT AND SACK SAMPLES FOR  
NEW MEXICO BUREAU OF MINES, SOCORRO  
AT AT LEAST TEN FOOT INTERVALS

SEP 24 1980

All distances must be from the outer boundaries of the Section.

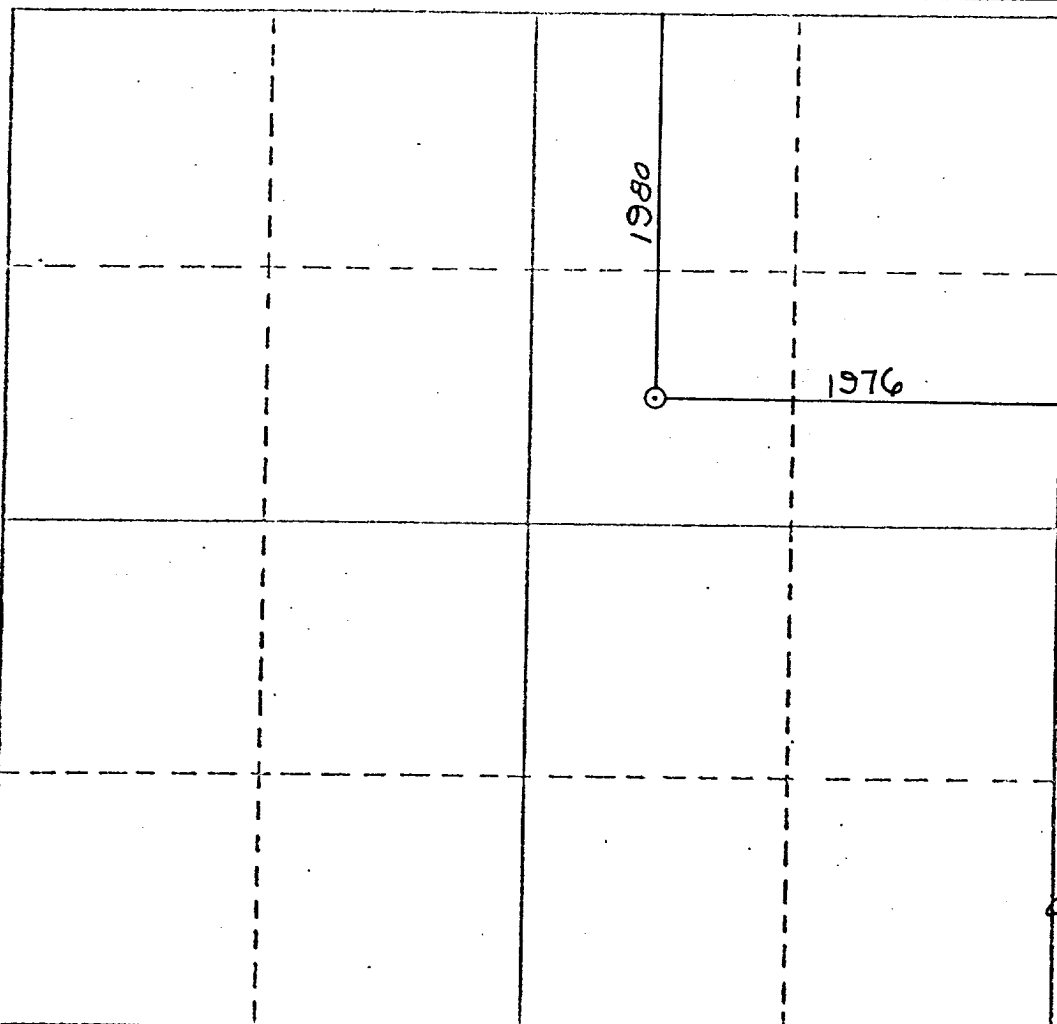
Operator <b>AMOCO</b>		Lease <b>HUTCHERSON B</b>		Well No. <b>12</b>	
Unit Letter <b>G</b>	Section <b>14</b>	Township <b>T 19 N</b>	Range <b>R 34 E</b>	County <b>UNION</b>	
Actual Footage Location of Well:					
1980		feet from the NORTH		line and 1976	
feet from the		line and		feet from the EAST	
Ground Level Elev. <b>4745</b>	Producing Formation <b>Tubb</b>		Pool <b>Und. Tubb</b>		Dedicated Acreage: <b>160</b> Acres

1. Outline the acreage dedicated to the subject well by colored pencil or hatchure marks on the plat below.
2. If more than one lease is dedicated to the well, outline each and identify the ownership thereof (both as to working interest and royalty).
3. If more than one lease of different ownership is dedicated to the well, have the interests of all owners been consolidated by communitization, unitization, force-pooling, etc?

☐ Yes ☐ No If answer is "yes," type of consolidation \_\_\_\_\_

If answer is "no," list the owners and tract descriptions which have actually been consolidated. (Use reverse side of this form if necessary.) \_\_\_\_\_

No allowable will be assigned to the well until all interests have been consolidated (by communitization, unitization, forced-pooling, or otherwise) or until a non-standard unit, eliminating such interests, has been approved by the Division.



CERTIFICATION

I hereby certify that the information contained herein is true and complete to the best of my knowledge and belief.

Name Benton Green  
Position Assist. Admin. Analyst  
Company Amoco Production Company  
Date 9-23-80

I hereby certify that the well location shown on this plat was plotted from field notes of actual surveys made by me or under my supervision, and that the same is true and correct to the best of my knowledge and belief.

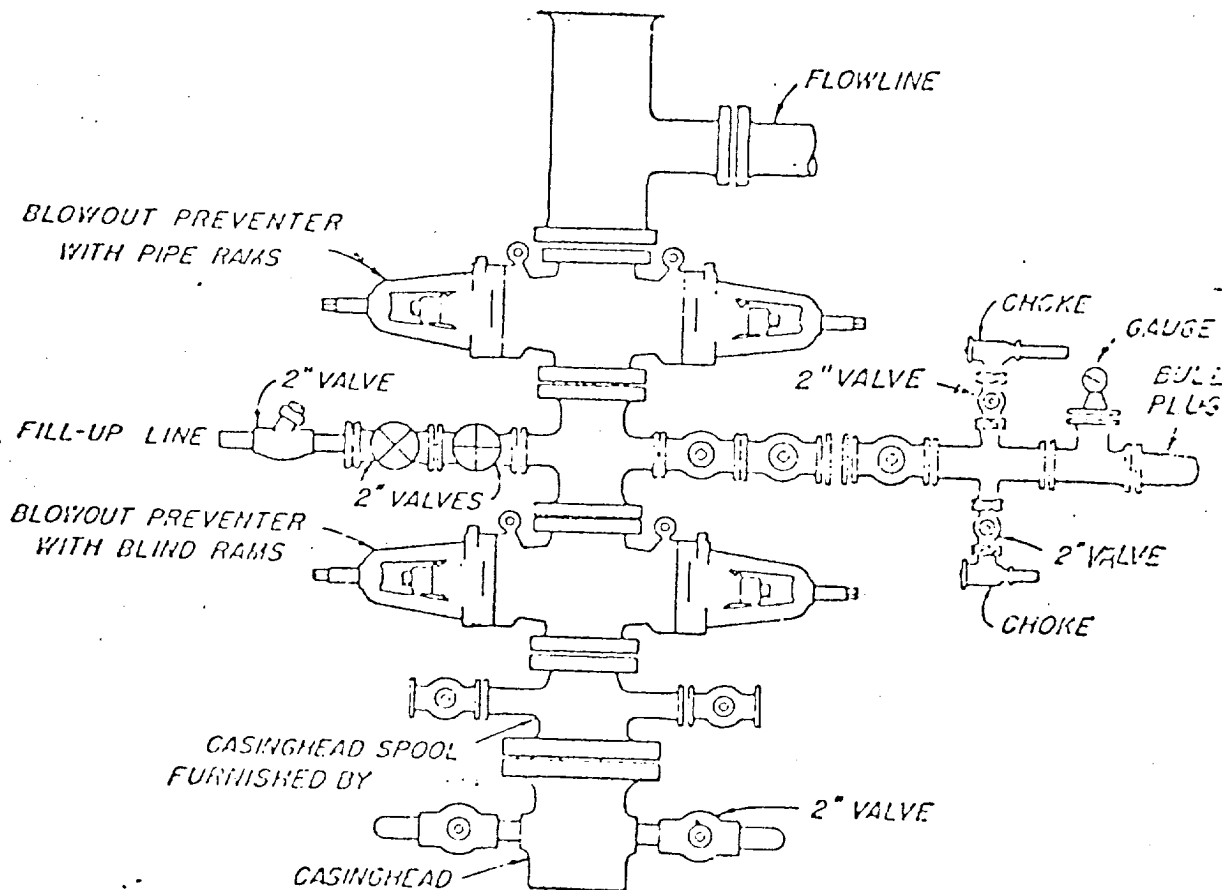
SEPT 25 1980

Date Surveyed SEP 25 1980  
Registered Professional Engineer and/or Land Surveyor [Signature]  
N.M.E.S. NO. 5103  
Certificate No. E. SH

ATTACHMENT "B"  
NOTES

1. Blow-out preventers and master valve to be fluid operated and oil fittings must be in good condition, 3,000# W.P. (6,000 p.s.i. test), minimum.
2. Equipment through which bit must pass shall be as large as the inside diameter of the casing that is being drilled through.
3. Nipple above blow-out preventer shall be same size as casing being drilled through.
4. Kelly cock required, 3,000# W.P. (6,000 p.s.i. test) minimum.
5. OMSCO or comparable safety valve must be available on rig floor at all times with proper connection or sub, 3,000# W.P. (6,000 p.s.i. test), minimum.
6. Blow-out preventers and master valve while drilling intermediate hole to 6000' may be 2,000# W.P. (4,000 p.s.i. test), minimum.
7. Choke assembly, beyond second valve from cross, may be positioned (Optional) outside of derrick foundation.
8. Spool or cross may be eliminated if connections are available in the lower part of the blow-out preventer body.
9. Plug valves - gate valves are optional. Valves shown as 2" are minimum size.
10. Casing head and casing head spool, including attached valves, to be furnished by Amoco.
11. Rams in preventers will be installed as follows:
 

When drilling, use: Top Preventer - Drill pipe rams Bottom Preventer - Blind rams or master valve	When running casing, use: Top Preventer - Casing rams Bottom Preventer - Blind rams or master valve
---	---



BLOWOUT PREVENTER HOOK-UP

AMOCO PRODUCTION COMPANY

EXHIBIT D--I MODIFIED

JUNE 1, 1962