

All distances must be from the outer boundaries of the Section.

Operator <b>AMOCO</b>		Lease <b>Bravo Dome Carbon Dioxide Gas Unit</b>		Well No. <b>2034 261G</b>
Well Letter <b>G</b>	Section <b>26</b>	Township <b>T20N</b>	Range <b>R34E</b>	County <b>UNION</b>
Well Footage Location of Well: 1980 feet from the NORTH line and 1980 feet from the EAST line.				
Sound Level Elev. <b>4775</b>	Producing Formation <b>Tubb</b>	Pool <b>Bravo Dome 640-acre area</b>		Dedicated Acreage: <b>640</b> Acres

- Outline the acreage dedicated to the subject well by colored pencil or hatchure marks on the plat below.
- If more than one lease is dedicated to the well, outline each and identify the ownership thereof (both as to working interest and royalty).
- If more than one lease of different ownership is dedicated to the well, have the interests of all owners been consolidated by communitization, unitization, force-pooling, etc?

RECEIVED

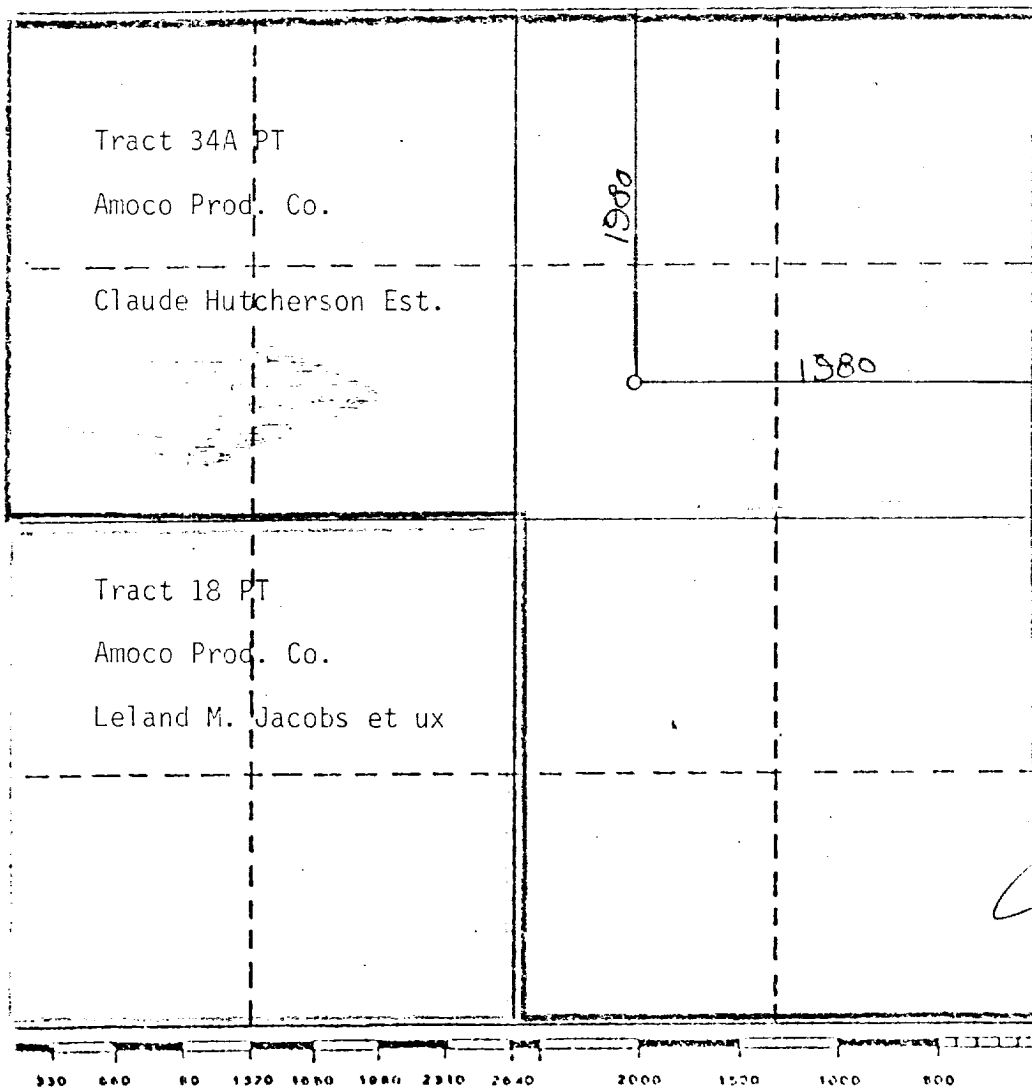
AUG 13 1984

OIL CONSERVATION DIVISION

☒ Yes ☐ No If answer is "yes," type of consolidation Pooling Declaration

If answer is "no," list the owners and tract descriptions which have actually been consolidated. (Use reverse side of this form if necessary.)

No allowable will be assigned to the well until all interests have been consolidated (by communitization, unitization, forced-pooling, or otherwise) or until a non-standard unit, eliminating such interests, has been approved by the Division.



CERTIFICATION

I hereby certify that the information contained herein is true and complete to the best of my knowledge and belief.

Name John B McElroy  
Position Assist. Admin. Analyst  
Company Amoco Production Company  
Date 8-8-84

I hereby certify that the well location shown on this plat was plotted from field notes of actual surveys made by me or under my supervision, and that the same is true and correct to the best of my knowledge and belief.

SEPT 29 1984

Date Surveyed 8-8-84  
Professional Engineer  
and/or Land Surveyor  
[Signature]  
N.M.L.S. NO. 5103  
Certificate No. E. 5103