

NO. OF COPIES RECEIVED	
DISTRIBUTION	
SANTA FE	
FILE	
U.S.G.S.	
LAND OFFICE	
OPERATOR	

NEW MEXICO OIL CONSERVATION COMMISSION

Form C-101
Revised 1-1-65

API #30-059-20110

APPLICATION FOR PERMIT TO DRILL, DEEPEN, OR PLUG BACK

1a. Type of Work DRILL <input checked="" type="checkbox"/> DEEPEN <input type="checkbox"/> PLUG BACK <input type="checkbox"/>		1b. Type of Well OIL WELL <input type="checkbox"/> GAS WELL <input checked="" type="checkbox"/> C02 <input type="checkbox"/> OTHER <input type="checkbox"/>		1c. Name of Operator Amoco Production Company		1d. Field and Pool, or Wellbore Und. Tubb	
2. Address of Operator P. O. Box 68 Hobbs, NM 88240		3. Name of Lessee Myklebust F		4. Well No. 1		5. State Oil & Gas Lease No.	
4. Location of Well UNIT LETTER F LOCATED 1980 FEET FROM THE North LINE AND 1980 FEET FROM THE West LINE OF SEC. 18 TWP. 20-N R. 35-E N.M.P.M.		6. County Union		7. Rotary or C.T. Rotary		8. Approx. Date Work will start 2-27-81	
9. Elevation (Show whether DE, RT, etc.) 4667' GL		10. Blanket-on-file Blanket-on-file		11. NA		12. 2595'	

PROPOSED CASING AND CEMENT PROGRAM

SIZE OF HOLE	SIZE OF CASING	WEIGHT PER FOOT	SETTING DEPTH	SACKS OF CEMENT	EST. TOP
12-1/4	8-5/8"	24#	700'	Circ.	Surface
7-7/8"	5-1/2"	14#	2595'	Tie back to 8-5/8" BTM 8-5/8"	

Propose to drill and equip well in the Tubb formation. After reaching TD logs will be run and evaluated. Perforate and stimulate as necessary in attempting commercial production.

MUD PROGRAM: 0'-700' Native mud and fresh water
700'-TD Commercial mud and brine with minimum properties for safe hole conditions.

BOP Program Attached
Gas is not dedicated

APPROVAL VALID FOR 180 DAYS
PERMIT EXPIRES 8-25-81
UNLESS DRILLING UNDERWAY

0+2-NMOCD, SF 1-Hou 1-Susp 1-BD

IN ABOVE SPACE DESCRIBE PROPOSED PROGRAM OR PROPOSED TO BE RUN IN THIS SPACE, WITH DATA ON PRESENT PRO-UCTIVE ZONE AND PROPOSED NEW PRO-UCTIVE ZONE. GIVE BLOWOUT PREVENTER PROGRAM, IF ANY.

I hereby certify that the information above is true and complete to the best of my knowledge and belief.

Signed Bob Davis Title Admin. Analyst Date 2-19-81

(This space for State Use)

APPROVED BY Carl Ullrich TITLE State Engineer DATE 2/25/81

CONDITIONS OF APPROVAL, IF ANY:

NEW MEXICO OIL CONSERVATION COMMISSION
WELL LOCATION AND ACREAGE DEDICATION PLAT

Form C-102
Supersedes C-128
Effective 1-1-65

All distances must be from the outer boundaries of the Section

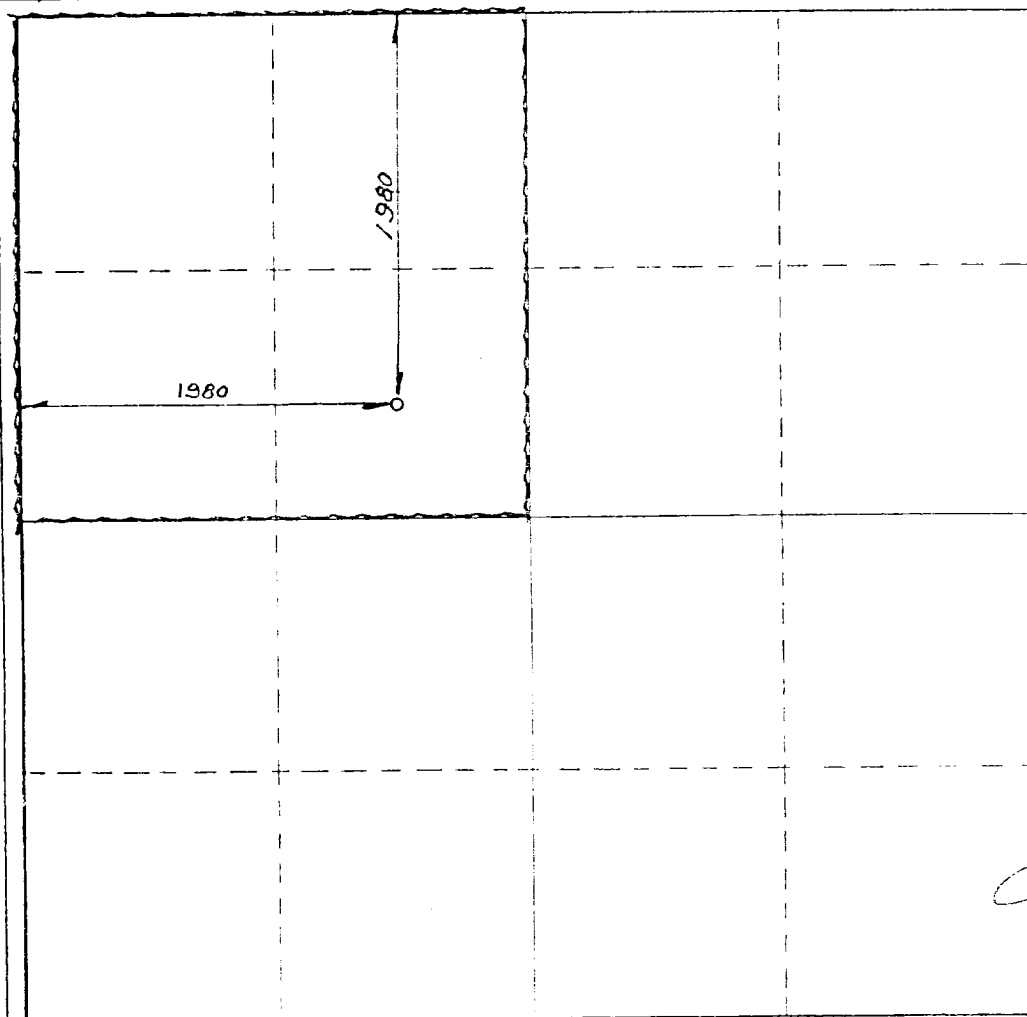
Operator AMOCO		Lease MYKLEBUST F		Well No. 1
Unit Letter F	Section 18	Township T20N	Range R35E	County UNION
Actual Footage Location of Well: 1980 feet from the NORTH line and 1980 feet from the WEST line				
Ground Level Elev. 4667	Producing Formation Tubb	Pool Und. Tubb	Dedicated Acreage: 160 Acres	

1. Outline the acreage dedicated to the subject well by colored pencil or hatchure marks on the plat below.
2. If more than one lease is dedicated to the well, outline each and identify the ownership thereof (both as to working interest and royalty).
3. If more than one lease of different ownership is dedicated to the well, have the interests of all owners been consolidated by communitization, unitization, force-pooling, etc?

☐ Yes ☐ No If answer is "yes," type of consolidation _____

If answer is "no," list the owners and tract descriptions which have actually been consolidated. (Use reverse side of this form if necessary.) _____

No allowable will be assigned to the well until all interests have been consolidated (by communitization, unitization, forced-pooling, or otherwise) or until a non-standard unit, eliminating such interests, has been approved by the Commission.



CERTIFICATION

I hereby certify that the information contained herein is true and complete to the best of my knowledge and belief.

Name **Bob Davis**
Position **Admin. Analyst**
Company **Amoco Production Company**
Date **2-19-81**

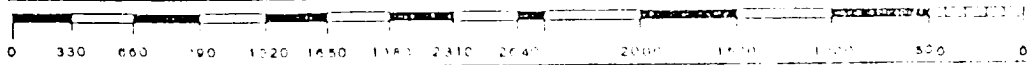
I hereby certify that the well location shown on this plat was plotted from field notes of actual surveys made by me or under my supervision, and that the same is true and correct to the best of my knowledge and belief.

FEB. 16, 1981

Date Surveyed
David Shide
Registered Professional Engineer
and/or Land Surveyor

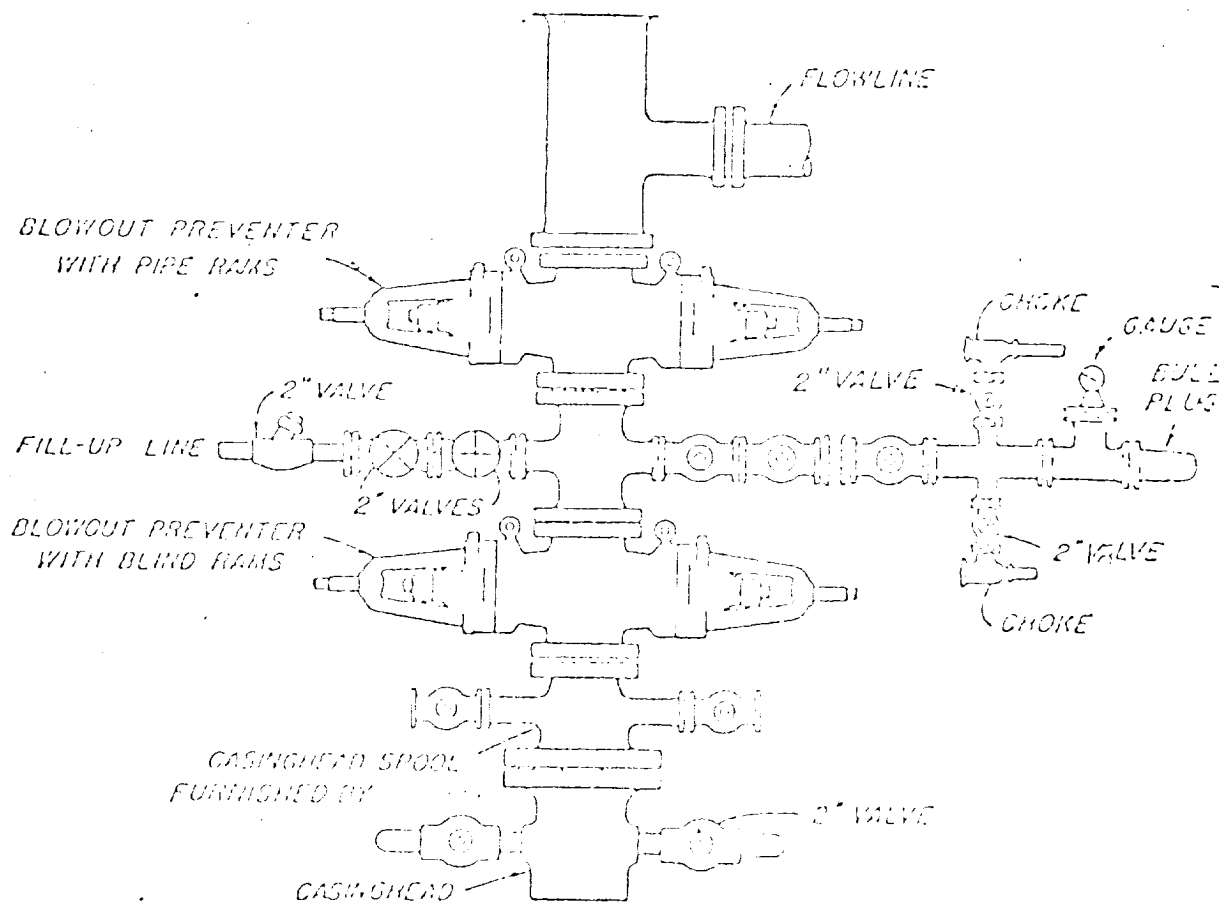
N.M.L.S. NO. 5103

Continuation



1. Blow-out preventers and master valve to be fluid operated and oil fittings must be in good condition, 3,000# W.P. (6,000 p.s.i. test), minimum.
2. Equipment through which bit must pass shall be as large as the inside diameter of the casing that is being drilled through.
3. Riddle above blow-out preventer shall be same size as casing being drilled through.
4. Kelly cock required, 3,000# W.P. (6,000 p.s.i. test) minimum.
5. OMSO or comparable safety valve must be available on rig floor at all times with proper connection or sub, 3,000# W.P. (6,000 p.s.i. test), minimum.
6. Blow-out preventers and master valve while drilling intermediate hole to 6000' may be 2,000# W.P. (4,000 p.s.i. test), minimum.
7. Choke assembly, beyond second valve from cross, may be positioned (Optional) outside of derrick foundation.
8. Spool or cross may be eliminated if connections are available in the lower part of the blow-out preventer body.
9. Plug valves - gate valves are optional. Valves shown as 2" are minimum size.
10. Casing head and casing head spool, including attached valves, to be furnished by Amoco.
11. Rams in preventers will be installed as follows:

When drilling, use:	When running casing, use:
Top Preventer - Drill pipe rams	Top Preventer - Casing rams
Bottom Preventer - Blind rams or master valve	Bottom Preventer - Blind rams or master valve



BLOWOUT PREVENTER HOOK-UP

AMOCO PRODUCTION COMPANY

EXHIBIT D-1 MODIFIED

JUNE 1, 1962