

NO. OF COPIES RECEIVED	
DISTRIBUTION	
SANTA FE	
FILE	<input checked="" type="checkbox"/>
U.S.G.S.	
LAND OFFICE	
OPERATOR	

NEW MEXICO OIL CONSERVATION COMMISSION

API # 30-059-20123

Form C-101
Revised 1-1-65

5A. Indicate Type of Lease
STATE ☐ OIL & GAS FEE ☒

5. State Oil & Gas Lease No.

APPLICATION FOR PERMIT TO DRILL, DEEPEN, OR PLUG BACK

1a. Type of Work

DRILL ☒

DEEPEN ☐

PLUG BACK ☐

b. Type of Well

OIL WELL ☐

GAS WELL ☒

CO₂ OTHER

SINGLE ZONE ☒

MULTIPLE ZONE ☐

2. Name of Operator

Amoco Production Company

3. Address of Operator

P. O. Box 68, Hobbs, NM 88240

4. Location of Well

UNIT LETTER J LOCATED 1980 FEET FROM THE South LINE

AND 1980 FEET FROM THE East LINE OF SEC. 8 TWP. 19N RGE. 35E NMPM

7. Unit Agreement Name

8. Farm or Lease Name

Cain "B"

9. Well No.

1

10. Field and Pool, or Wildcat

Und. Tubb

12. County

Union

19. Proposed Depth

2545'

19A. Formation

Tubb

20. Rotary or C.T.

Rotary

21. Elevations (show whether DE, RT, etc.)

4625 G.L.

21A. Kind & Status Plug. Bond

Blanket on File

21B. Drilling Contractor

NA

22. Approx. Date Work will start

3/18/81

23.

PROPOSED CASING AND CEMENT PROGRAM

SIZE OF HOLE	SIZE OF CASING	WEIGHT PER FOOT	SETTING DEPTH	SACKS OF CEMENT	EST. TOP
12-1/4"	8-5/8"	24#	700'	Circ.	Surface
7-7/8"	5-1/2"	14#	2545'	Tie back to	Btm 8-5/8"
				8-5/8"	

Propose to drill and equip well in the Tubb formation. After reaching TD logs will be run and evaluated. Perforate and stimulate as necessary in attempting commercial production.

Mud Program: 0-700'
700-TD

Native mud and fresh water.
Commercial mud and brine with minimum properties
for safe hole conditions.

BOP Program Attached
Gas is not Dedicated

APPROVAL VALID FOR 180 DAYS
PERMIT NO. 9-25-81
UNLESS DRILLING UNDERWAY

NEW MEXICO OIL CONSERVATION COMMISSION
WITHIN 24 HOURS OF DECLINING OIL LANDS

0 + 2 NMOC - SF

1 - Hou

1 - Susp

1 - BD

IN ABOVE SPACE DESCRIBE PROPOSED PROGRAM: IF PROPOSAL IS TO DEEPEN OR PLUG BACK, GIVE DATA ON PRESENT PRODUCTIVE ZONE AND PROPOSED NEW PRODUCTIVE ZONE. GIVE BLOWOUT PREVENTER PROGRAM, IF ANY.

I hereby certify that the information above is true and complete to the best of my knowledge and belief.

Signed Bob Davis Title Admin. Analyst Date 3/13/81

(This space for State Use)

APPROVED BY Carl Helwig TITLE SENIOR PLANNING GEOLOGIST DATE 3/19/81
CONDITIONS OF APPROVAL, IF ANY:

NEW MEXICO OIL CONSERVATION COMMISSION
WELL LOCATION AND ACREAGE DEDICATION PLAT

RE-STAKED

Form C-102
Supersedes C-128
Effective 1-1-65

All distances must be from the outer boundaries of the Section.

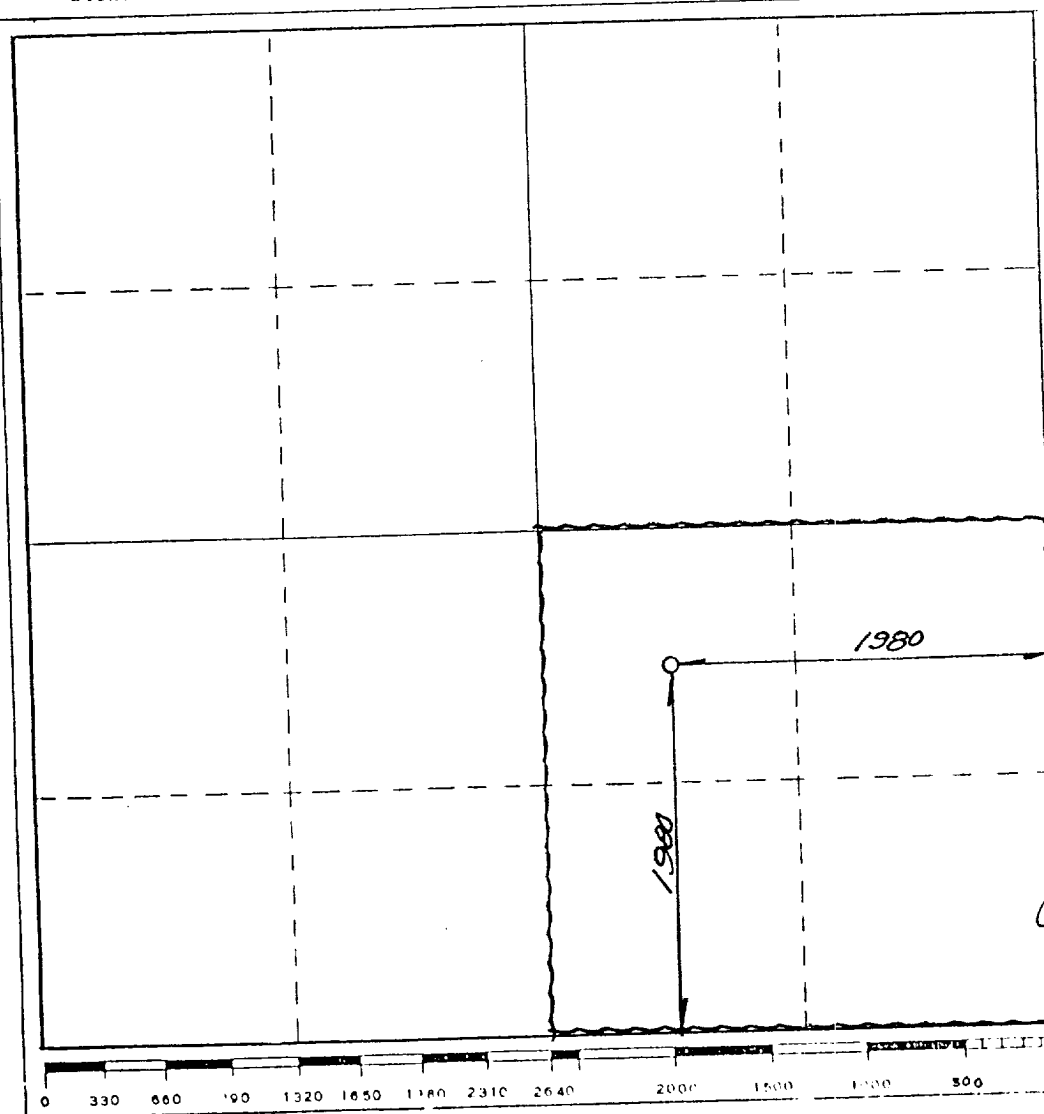
Operator AMOCO		Lease CAIN B		Well No. 1000
Unit Letter J	Section 8	Township T19N	Range R35E	County UNION
Actual Footage Location of Well: 1980 feet from the SOUTH line and 1980 feet from the EAST line				
Ground Level Elev. 4625	Producing Formation Tubb	Pool Und. Tubb	Dedicated Acreage: 160 Acres	

1. Outline the acreage dedicated to the subject well by colored pencil or hatchure marks on the plat below.
2. If more than one lease is dedicated to the well, outline each and identify the ownership thereof (both as to working interest and royalty).
3. If more than one lease of different ownership is dedicated to the well, have the interests of all owners been consolidated by communitization, unitization, force-pooling, etc?

☐ Yes ☐ No If answer is "yes," type of consolidation _____

If answer is "no," list the owners and tract descriptions which have actually been consolidated. (Use reverse side of this form if necessary.) _____

No allowable will be assigned to the well until all interests have been consolidated (by communitization, unitization, forced-pooling, or otherwise) or until a non-standard unit, eliminating such interests, has been approved by the Commission.



CERTIFICATION

I hereby certify that the information contained herein is true and complete to the best of my knowledge and belief.

Name Bob Davis
Position Admin. Analyst
Company Amoco Production Company
Date 3/13/81

I hereby certify that the well location shown on this plat was plotted from field notes of actual surveys made by me or under my supervision, and that the same is true and correct to the best of my knowledge and belief.

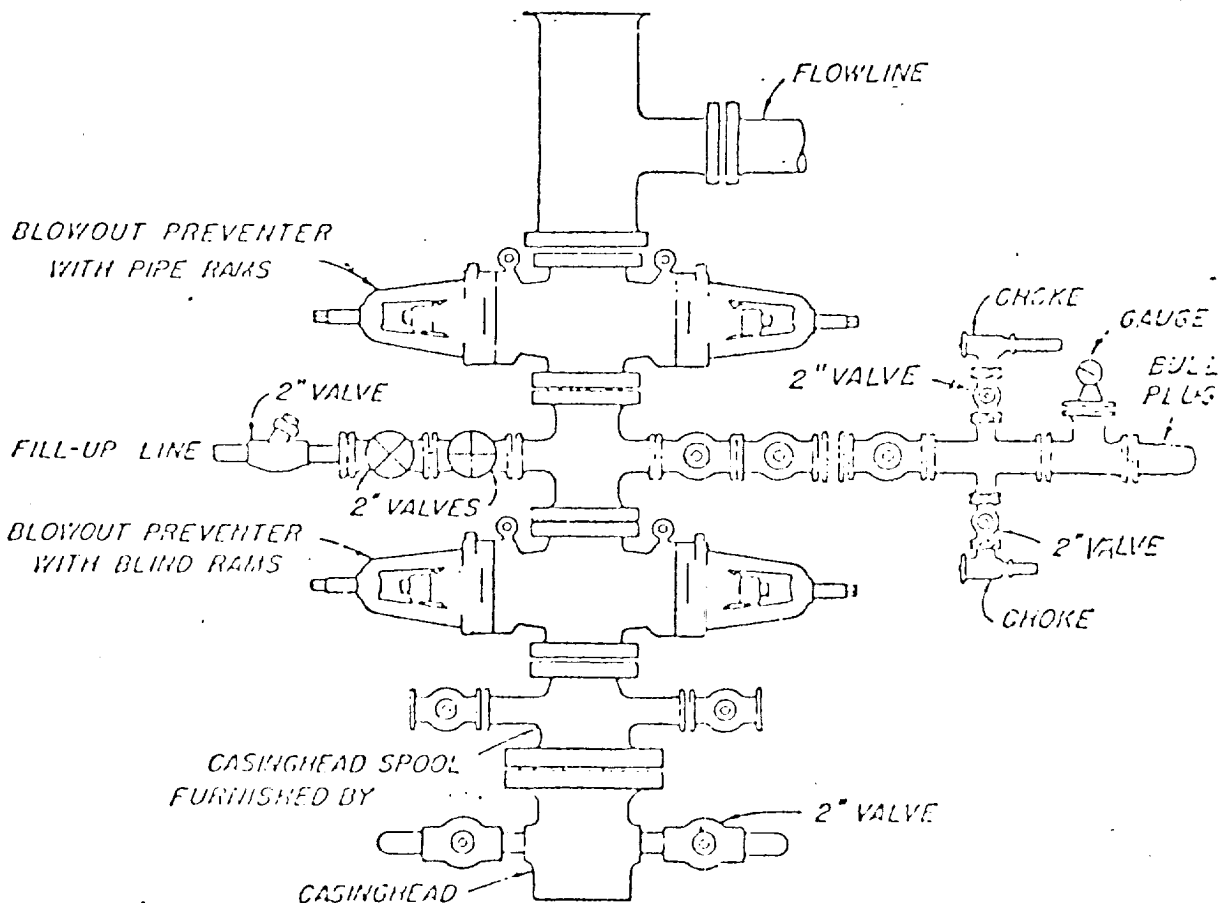
MARCH 29 1981

Date Surveyed E
Registered Professional Engineer
and/or Land Surveyor
N.M. REG. NO. 5503
Certification No. E. SHIEL

ATTACHMENT "B"
NOTES

1. Blow-out preventers and master valve to be fluid operated and oil fittings must be in good condition, 3,000# W.P. (6,000 p.s.i. test), minimum.
2. Equipment through which bit must pass shall be as large as the inside diameter of the casing that is being drilled through.
3. Ripple above blow-out preventer shall be same size as casing being drilled through.
4. Kelly cock required, 3,000# W.P. (6,000 p.s.i. test) minimum.
5. OMSCO or comparable safety valve must be available on rig floor at all times with proper connection or sub, 3,000# W.P. (6,000 p.s.i. test), minimum.
6. Blow-out preventers and master valve while drilling intermediate hole to 6000' may be 2,000# W.P. (4,000 p.s.i. test), minimum.
7. Choke assembly, beyond second valve from cross, may be positioned (Optional) outside of derrick foundation.
8. Spool or cross may be eliminated if connections are available in the lower part of the blow-out preventer body.
9. Plug valves - gate valves are optional. Valves shown as 2" are minimum size.
10. Casing head and casing head spool, including attached valves, to be furnished by Amoco.
11. Rams in preventers will be installed as follows:

When drilling, use:	When running casing, use:
Top Preventer - Drill pipe rams	Top Preventer - Casing rams
Bottom Preventer - Blind rams or master valve	Bottom Preventer - Blind rams or master valve



BLOWOUT PREVENTER HOOK-UP

AMOCO PRODUCTION COMPANY

EXHIBIT D--I MODIFIED

JUNE 1, 1962