

OIL CONSERVATION COMMISSION TO BE NOTIFIED
WITHIN 24 HOURS OF BEGINNING OPERATIONS

NEW MEXICO OIL CONSERVATION COMMISSION
WELL LOCATION AND ACREAGE DEDICATION PLAT

Form O-102
Revised 1-6-82
Copyright 1982

All distances must be from the outer boundary of the section.

| | | | | | |
|-------------------------------|--------------------------|------------|-------------------------|------|------------------------------|
| AMOCO PRODUCTION COMPANY | | | Bravo Dome CO2 Gas Unit | | Well No. 2034181G |
| Section 18 | Township T20N | Range R34E | County UNION | | |
| Approximate Location of Well: | | | | | |
| 1980 | feet from the | NORTH | line and | 1980 | feet from the |
| | | | | | EAST |
| Ground Level Elev. 4825 | Producing Formation Tubb | | Pool Und. Tubb | | Dedicated Acreage: 160 Acres |

1. Outline the acreage dedicated to the subject well by colored pencil or hatchure marks on the plat below.
2. If more than one lease is dedicated to the well, outline each and identify the ownership thereof (both as to working interest and royalty).
3. If more than one lease of different ownership is dedicated to the well, have the interests of all owners been consolidated by communitization, unitization, force-pooling, etc?

☐ Yes ☐ No If answer is "yes," type of consolidation _____

If answer is "no," list the owners and tract descriptions which have actually been consolidated. (Use reverse side of this form if necessary.) _____

No allowable will be assigned to the well until all interests have been consolidated (by communitization, unitization, forced-pooling, or otherwise) or until a non-standard unit, eliminating such interests, has been approved by the Commission.

1980

1980

REGISTERED
JUL 25 1983
OIL CONSERVATION DIVISION
SANTA FE

CERTIFICATION

I hereby certify that the information contained herein is true and complete to the best of my knowledge and belief.

Name _____
Assist. Admin. Analyst
Position _____
Amoco Production Company
Company _____
7-22-83
Date _____

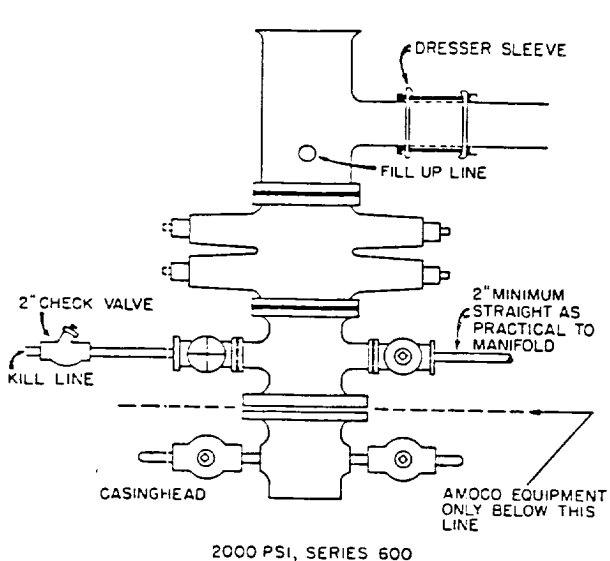
I hereby certify that the well location shown on this plat was plotted from field notes of actual surveys made by me or under my supervision, and that the same is true and correct to the best of my knowledge and belief.

REGISTERED LAND SURVEYOR
No. 5103
LEE E. SHIELDS
Date Surveyed _____
Registered Professional Engineer and/or Land Surveyor
N.M. 103

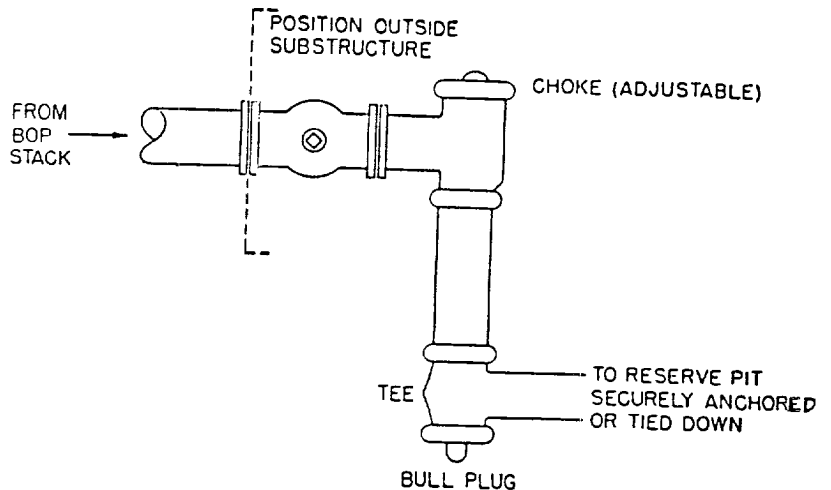
STANDARD 2000 PSI W.P. BOP STACK

1. Blow-out preventers may be manually operated.
2. All equipment must be in good condition, 2,000 psi W.P. (4,000 psi test) minimum.
3. Bell nipple above blow-out preventer shall be same size as casing being drilled through.
4. Kelly cock to be installed on kelly.
5. Full opening safety valve 2,000 psi w.p. (4,000 psi test) minimum must be available on rig floor at all times with proper connection or subs to fit any tool joint in string.
6. Spool or cross may be eliminated if connections are available in the lower part of the blow-out preventer body.
7. Double or space saver type preventers may be used in lieu of two single preventers.
8. BOP rams to be installed as follows:
 - Top preventer - Drill pipe or casing rams
 - Bottom preventer - Blind rams

*Amoco District Superintendent may reverse location of rams.
9. Extensions and hand wheels to be installed and braced at all times.
10. Manifold valves may be gate or plug metal to metal seal 2" minimum.



2000 PSI, SERIES 600



2000 PSI W.P.