

NO. OF COPIES RECEIVED	
DISTRIBUTION	
SANTA FE	1
FILE	1
U.S.G.S.	2
LAND OFFICE	NMOC
OPERATOR	1

API # 30-059-20254

5A. Indicate Type of Lease  
STATE ☐ REC ☒

5. State Oil & Gas Lease No.

APPLICATION FOR PERMIT TO DRILL, DEEPEN, OR PLUG BACK

1a. Type of Work  
DRILL ☒ DEEPEN ☐ PLUG BACK ☐

b. Type of Well  
OIL WELL ☐ GAS WELL ☒ OTHER ☐ CO2 ☐ SINGLE ZONE ☒ MULTIPLE ZONE ☐

2. Name of Operator  
Amoco Production Company

3. Address of Operator  
P.O.Box 606, Clayton, New Mexico 88415

4. Location of Well  
UNIT LETTER G LOCATED 1650 FEET FROM THE North LINE  
AND 1650 FEET FROM THE East LINE OF SEC. 22 TWP. 18-N RGE. 35-E NADPM

7. Field and Pool, or Wildcat  
Bravo Dome Carbon Dioxide Gas Unit 640-Acre Area

8. Form or Lease Name  
Bravo Dome Carbon Dioxide Gas Unit

9. Well No.  
1835 221G

12. County  
Union

19. Proposed Depth  
2900'

19A. Formation  
Tubb

20. Rotary or C.T.  
Rotary

21. Elevations (Show whether DT, HI, etc.)  
4584' GL

21A. Kind & Status Plug. Bond  
Blanket-on-file

21B. Drilling Contractor  
N/A

22. Approx. Date Work will start  
September, 1984

PROPOSED CASING AND CEMENT PROGRAM

SIZE OF HOLE	SIZE OF CASING	WEIGHT PER FOOT	SETTING DEPTH	SACKS OF CEMENT	EST. TOP
12-1/4"	9-5/8"	32.30#	700'	circulate	surface
8-3/4"	7"	15, 20#	2900'	Tieback to 9-5/8"	surface

Propose to drill and equip well in the Tubb formation. After reaching TD logs will be run and evaluated. Perforate and stimulate as necessary in attempting commercial production.

Mud Program: 0 - 700' Native Spud Mud  
700 - TD KCL Salt Water Gel-Starch

BOP Diagram attached.

APPROVED FOR 180 DAYS  
3-5-84

RECEIVED

0+5-NMOCDSF 1-J.R.Barnett,HOU Rm 21.156 1-F.J.Nash,HOU Rm.4.206 1-WF,C 1-WF,H 1-Susp  
1-JSM 1-Amerada 1-Amerigas 1-Cities Service 1-Conoco 1-CO2 in Action 1-Sun  
1-Excelsior 1-Tex 1-Exxon

ABOVE SPACE DESCRIBE PROPOSED PROGRAM IF PROPOSAL IS TO DEEPEN OR PLUG BACK, GIVE DATA ON PRESENT PRODUCTIVE ZONE AND PROPOSED NEW PRODUCTIVE ZONE. GIVE BLOWOUT PREVENTER PROGRAM, IF ANY.

hereby certify that the information above is true and complete to the best of my knowledge and belief.

Signed John L. McEwen Title Asst. Adm. Analyst Date 9-4-84

APPROVED BY [Signature] TITLE REGIONAL SUPERVISOR DATE 9-6-84

CONDITIONS OF APPROVAL, IF ANY:

NEW MEXICO CONSERVATION COMMISSION  
WELL LOCATION AND ACREAGE DEDICATION PLAT

Form C-1  
Supersedes C-1B  
Effective 1-1-77

All distances must be in feet or multiples of 10 feet.

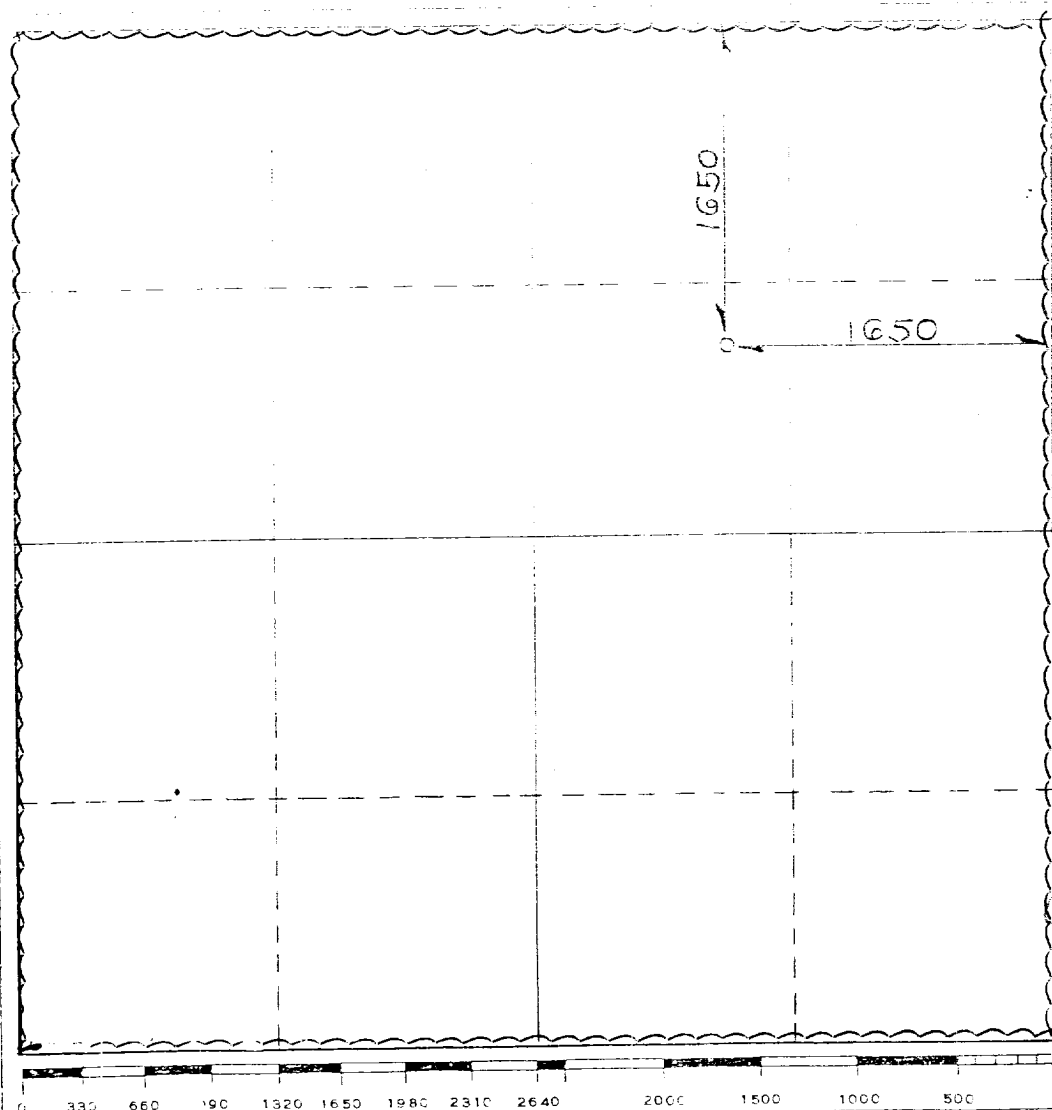
Name <b>Bravo Dome Carbon Dioxide Gas Unit</b>				Well No. <b>1835221G</b>
Section <b>G</b>	Range <b>22</b>	Township <b>T18N</b>	Range <b>R35E</b>	County <b>UNION</b>
Well Location of Well: 1650 feet from the <b>NORTH</b> line and 1650 feet from the <b>EAST</b> line. Elevation: <b>4584</b> Producing Formation: <b>Tubb</b> Well Name: <b>Bravo Dome 640-Acre Area</b> Acreage: <b>640</b> Acres				

- Outline the acreage dedicated to the subject well by colored pencil or hatchure marks on the plat below.
- If more than one lease is dedicated to the well, outline each and identify the ownership thereof (both as to working interest and royalty).
- If more than one lease of different ownership is dedicated to the well, have the interests of all owners been consolidated by communitization, unitization, force-pooling, etc?

☒ Yes ☐ No If answer is "yes" type of consolidation Unitization

If answer is "no" list the owners and their interests which have actually been consolidated. (Use reverse side of this form if necessary)

No acreage will be assigned to the well until the interests have been consolidated by communitization, unitization, force-pooling, or otherwise, or until the consolidation of such interests has been approved by the Commission.



CERTIFICATION

I hereby certify that the information contained herein is true and complete to the best of my knowledge and belief.

Name John S. McElroy  
 Position Asst. Adm. Analyst  
 Company Amoco Production Company  
 Date 9-4-84

I hereby certify that the well location shown on this plat was plotted from field notes of actual surveys made by me or under my supervision, and that the same is true and correct to the best of my knowledge and belief.

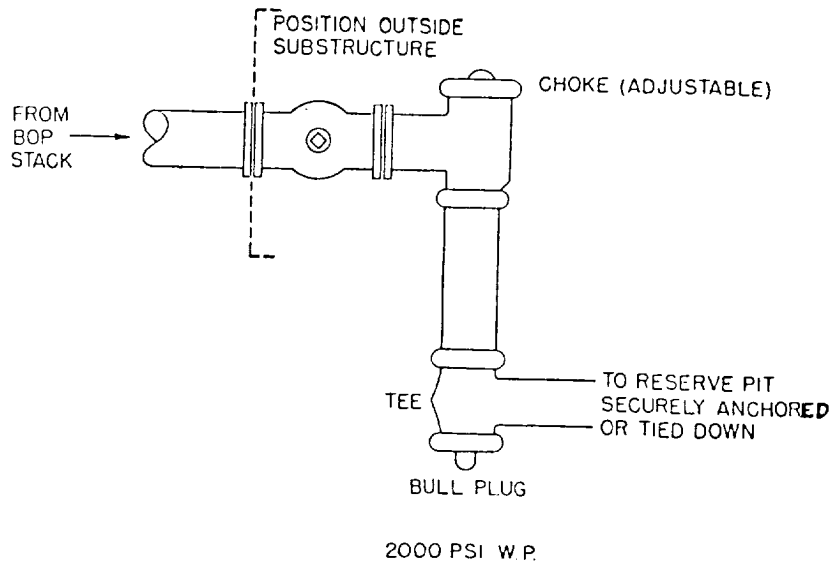
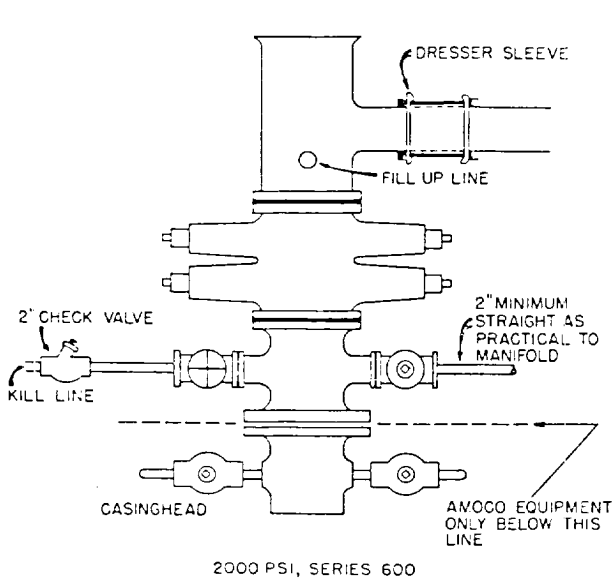
SEP 11 1984  
 Date Registered  
 Registered Professional Engineer and/or Land Surveyor  
 N.M. LEE E. SHIELDS No. 103  
 Certificate No. \_\_\_\_\_

# STANDARD 2000 PSI W.P. BOP STACK

1. Blow-out preventers may be manually operated.
2. All equipment must be in good condition, 2,000 psi W.P. (4,000 psi test) minimum.
3. Bell nipple above blow-out preventer shall be same size as casing being drilled through.
4. Kelly cock to be installed on kelly.
5. Full opening safety valve 2,000 psi w.p. (4,000 psi test) minimum must be available on rig floor at all times with proper connection or subs to fit any tool joint in string.
6. Spool or cross may be eliminated if connections are available in the lower part of the blow-out preventer body.
7. Double or space saver type preventers may be used in lieu of two single preventers.
8. BOP rams to be installed as follows:
 

Top preventer	-	Drill pipe or casing rams
Bottom preventer	-	Blind rams

\*Amoco District Superintendent may reverse location of rams.
9. Extensions and hand wheels to be installed and braced at all times.
10. Manifold valves may be gate or plug metal to metal seal 2" minimum.



NEW MEXICO OIL CONSERVATION COMMISSION  
WELL LOCATION AND ACREAGE DEDICATION PLAT

Form C-11.  
Supersedes C-108  
Effective 1-4-81

All distances must be from the outer boundaries of the Section

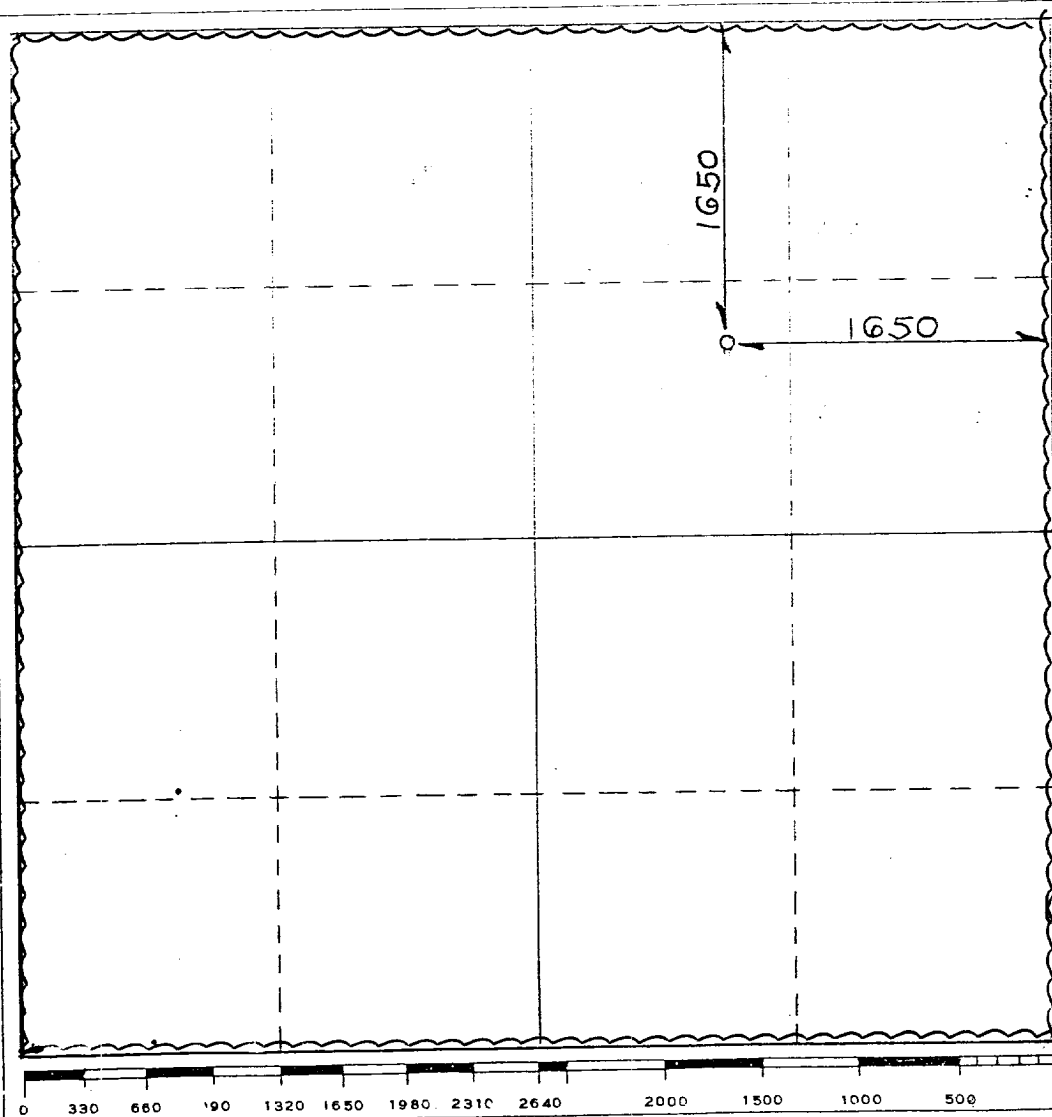
Operator <b>AMOCO</b>		Lease <b>Bravo Dome Carbon Dioxide Gas Unit</b>			Well No. <b>1835221G</b>
Unit Letter <b>G</b>	Section <b>22</b>	Township <b>T18N</b>	Range <b>R35E</b>	County <b>UNION</b>	
Actual Footage Location of Well: <b>1650</b> feet from the <b>NORTH</b> line and <b>1650</b> feet from the <b>EAST</b> line					
Ground Level Elev. <b>4584</b>	Producing Formation <b>Tubb</b>		Pool <b>Bravo Dome 640-Acre Area</b>		Dedicated Acreage: <b>640</b> Acres

- Outline the acreage dedicated to the subject well by colored pencil or hachure marks on the plat below.
- If more than one lease is dedicated to the well, outline each and identify the ownership thereof (both as to working interest and royalty).
- If more than one lease of different ownership is dedicated to the well, have the interests of all owners been consolidated by communitization, unitization, force-pooling, etc?

☒ Yes ☐ No If answer is "yes" type of consolidation **Unitization**

If answer is "no," list the owners and tract descriptions which have actually been consolidated. (Use reverse side of this form if necessary.)

No allowable will be assigned to the well until all interests have been consolidated (by communitization, unitization, forced-pooling, or otherwise) or until a non-standard unit, eliminating such interests, has been approved by the Commission.



CERTIFICATION

I hereby certify that the information contained herein is true and complete to the best of my knowledge and belief.

Name **John L. McElroy**  
Position **Asst. Adm. Analyst**  
Company **Amoco Production Company**  
Date **9-4-84**

I hereby certify that the well location shown on this plat was plotted from field notes of actual surveys made by me or under my supervision, and that the same is true and correct to the best of my knowledge and belief.

SEP 11 1984  
Date Registered  
Registered Professional Engineer  
and/or Land Surveyor  
N.M. **LEE E. SHIELDS** No. **103**  
Certificate No.

STANDARD 2000 PSI W.P. BOP STACK

1. Blow-out preventers may be manually operated.
2. All equipment must be in good condition, 2,000 psi W.P. (4,000 psi test) minimum.
3. Bell nipple above blow-out preventer shall be same size as casing being drilled through.
4. Kelly cock to be installed on kelly.
5. Full opening safety valve 2,000 psi w.p. (4,000 psi test) minimum must be available on rig floor at all times with proper connection or subs to fit any tool joint in string.
6. Spool or cross may be eliminated if connections are available in the lower part of the blow-out preventer body.
7. Double or space saver type preventers may be used in lieu of two single preventers.
8. BOP rams to be installed as follows: \*  
Top preventer - Drill pipe or casing rams  
Bottom preventer - Blind rams  
\*Amoco District Superintendent may reverse location of rams.
9. Extensions and hand wheels to be installed and braced at all times.
10. Manifold valves may be gate or plug metal to metal seal 2" minimum.

