

## WELL LOCATION AND ACREAGE DEDICATION PLAT

Supersedes 1-128  
Effective 1-1-1

All distances must be from the outer boundaries of the Section.

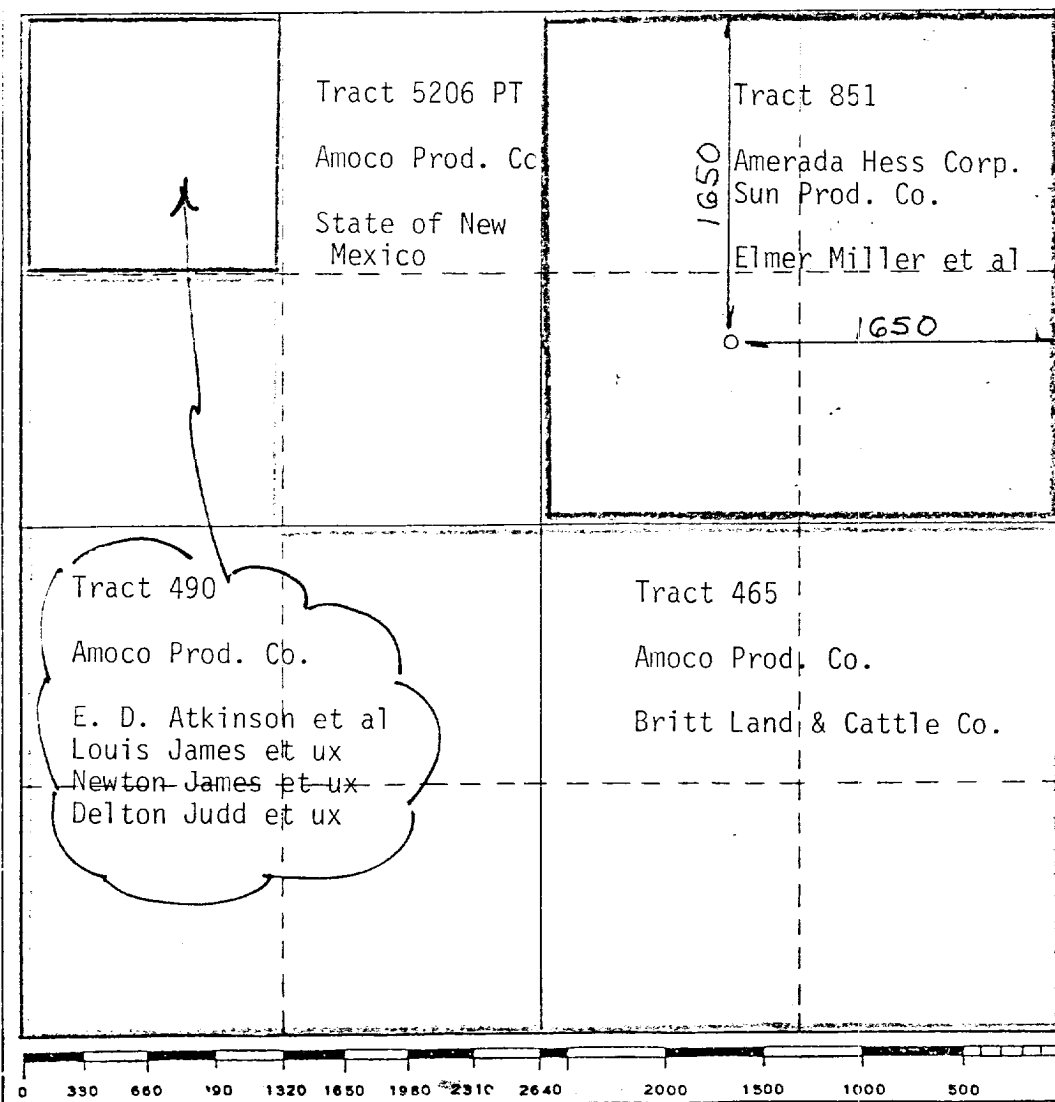
Operator <b>AMOCO</b>		Lease <b>Bravo Dome Carbon Dioxide Gas Unit</b>		Well No. <b>1834211G</b>	
Unit Letter <b>G</b>	Section <b>21</b>	Township <b>T18N</b>	Range <b>R34E</b>	County <b>UNION</b>	
Actual Footage Location of Well: <b>1650</b> feet from the <b>NORTH</b> line and <b>1650</b> feet from the <b>EAST</b> line					
Ground Level Elev. <b>4750</b>	Producing Formation <b>Tubb</b>	Pool <b>Bravo Dome 640-acre area</b>		Dedicated Acreage: <b>640</b> Acres	

1. Outline the acreage dedicated to the subject well by colored pencil or hachure marks on the plat below.
2. If more than one lease is dedicated to the well, outline each and identify the owners **RECEIVED** (both as to working interest and royalty).
3. If more than one lease of different ownership is dedicated to the well, have the interests of all owners been consolidated by communitization, unitization, force-pooling, etc?

**AUG 13 1984****OIL CONSERVATION DIVISION**
☒ Yes   ☐ No   If answer is "yes," type of consolidation Pooling Declaration

If answer is "no," list the owners and tract descriptions which have actually been consolidated. (Use reverse side of this form if necessary.) \_\_\_\_\_

No allowable will be assigned to the well until all interests have been consolidated (by communitization, unitization, forced-pooling, or otherwise) or until a non-standard unit, eliminating such interests, has been approved by the Commission.



## CERTIFICATION

I hereby certify that the information contained herein is true and complete to the best of my knowledge and belief.

Name John S. McEliza  
 Position Assist. Admin. Analyst  
 Company Amoco Production Company  
 Date 8-8-84

I hereby certify that the well location shown on this plat was plotted from field notes of actual surveys made by me or under my supervision, and that the same is true and correct to the best of my knowledge and belief.

OCT 3 1983  
 Date Surveyed 8-8-84  
 Registered Professional Engineer  
 and/or Land Surveyor  
 N.M.L.S. NO. 5103  
 Certificate No. \_\_\_\_\_