

District I

PO Box 1980, Hobbs, NM 88241-1980

District II

PO Drawer DD, Artesia, NM 88211-0719

District III

1000 Rio Brazos Rd., Aztec, NM 87410

District IV

PO Box 2088, Santa Fe, NM 87504-2088

State of New Mexico
Energy, Minerals & Natural Resources Department

Form C-101

Revised February 21, 1994

Instructions on back

OIL CONSERVATION DIVISION
PO Box 2088
Santa Fe, NM 87504-2088

Submit to Appropriate District Office
State Lease - 6 Copies
Fee Lease - 5 Copies

☐ AMENDED REPORT

APPLICATION FOR PERMIT TO DRILL, RE-ENTER, DEEPEN, PLUGBACK, OR ADD A ZONE

Operator Name and Address. AMOCO PRODUCTION COMPANY P. O. BOX 606 CLAYTON, NEW MEXICO 88415		OGRID Number 000778
		API Number 30 - 0
Property Code 000335	Property Name BDCDGU 2234	Well No. 181

7 Surface Location

UL or lot no.	Section	Township	Range	Lot Ida	Feet from the	North/South line	Feet from the	East/West line	County
G	18	22N	34E		1961'	NORTH	1979'	EAST	UNION

8 Proposed Bottom Hole Location If Different From Surface

UL or lot no.	Section	Township	Range	Lot Ida	Feet from the	North/South line	Feet from the	East/West line	County

Proposed Pool 1 BRAVO DOME CARBON DIOXIDE GAS (640)	Proposed Pool 2
--	-----------------

Work Type Code N	Well Type Code C	Cable/Rotary R	Lease Type Code P	Ground Level Elevation
Multiple NO	Proposed Depth 2470	Formation TUBB	Contractor SITTON	Spud Date JULY 1, 1995

21 Proposed Casing and Cement Program

Hole Size	Casing Size	Casing weight/foot	Setting Depth	Sacks of Cement	Estimated TOC
12.250"	8.625"	24#/FT STEEL	700 FT.	450 SACKS	SURFACE
7.875"	5.50"	5.91#/FT FGLASS	2400 FT.	270 SACKS	SURFACE
		15.50#/FT STEEL			

Describe the proposed program. If this application is to DEEPEN or PLUG BACK give the data on the present productive zone and proposed new productive zone. Describe the blowout prevention program, if any. Use additional sheets if necessary.

MUD PROGRAM 0-700' FRESH WATER/NATIVE MUD
700'-2400' FRESH WATER/STARCH/GEL

BOP PROGRAM ATTACHED

I hereby certify that the information given above is true and complete to the best of my knowledge and belief.

Signature:

Linda Oates

Printed name:

LINDA OATES

Title:

SR. ADMINISTRATIVE ASSISTANT

Date:

JUNE 1, 1995

Phone:

713/366-4510

OIL CONSERVATION DIVISION

Approved by:

Hy E Johnson

Title:

DISTRICT SUPERVISOR

Approval Date:

6/16/95

Expiration Date:

6/16/95

Conditions of Approval:

Attached ☐

District I
PO Box 1980, Hobbs, NM 88241-1980

District II
PO Drawer DD, Artesia, NM 88211-0719

District III
1000 Rio Brazos Rd., Aztec, NM 87410

District IV
PO Box 2088, Santa Fe, NM 87504-2088

State of New Mexico
Energy, Minerals & Natural Resources Department

OIL CONSERVATION DIVISION
PO Box 2088
Santa Fe, NM 87504-2088

Form C-102
Revised February 21, 1994
Instructions on back
Submit to Appropriate District Office
State Lease - 4 Copies
Fee Lease - 3 Copies

☐ AMENDED REPORT

WELL LOCATION AND ACREAGE DEDICATION PLAT

¹ API Number		² Pool Code 96010	³ Pool Name BRAVO DOME CARBON DIOXIDE GAS (640)
⁴ Property Code 000335	⁵ Property Name BDCDGU 2234		⁶ Well Number 181
⁷ OGRID No. 000778	⁸ Operator Name AMOCO PRODUCTION COMPANY		⁹ Elevation 4929.80'

¹⁰ Surface Location

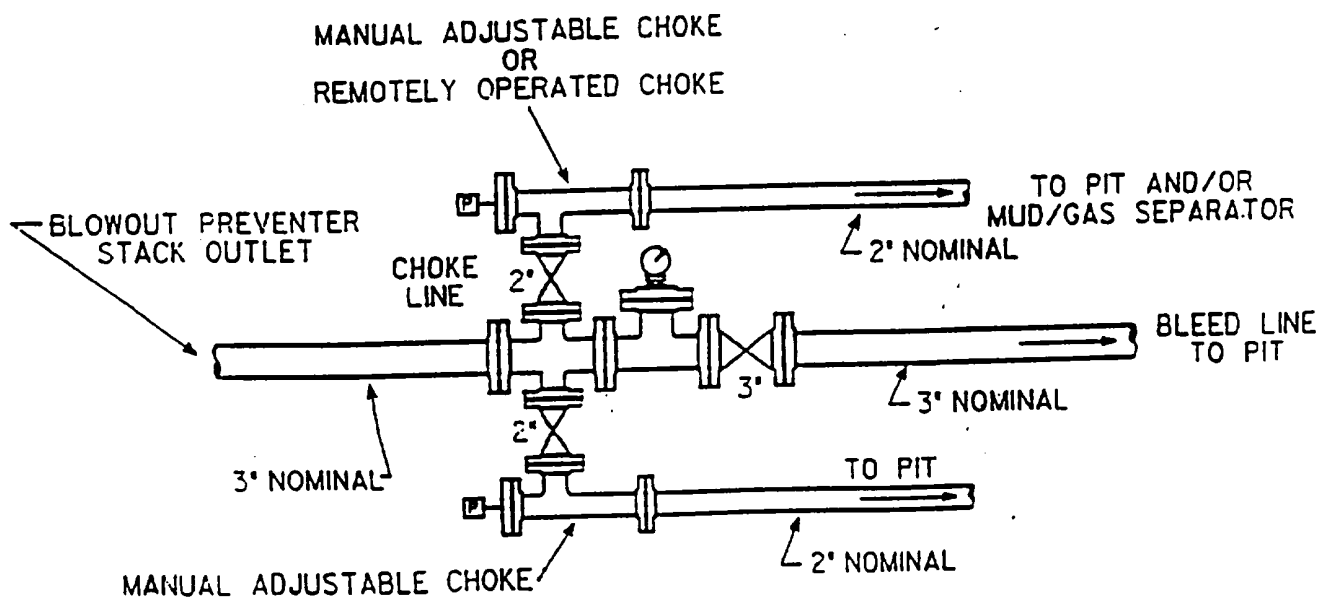
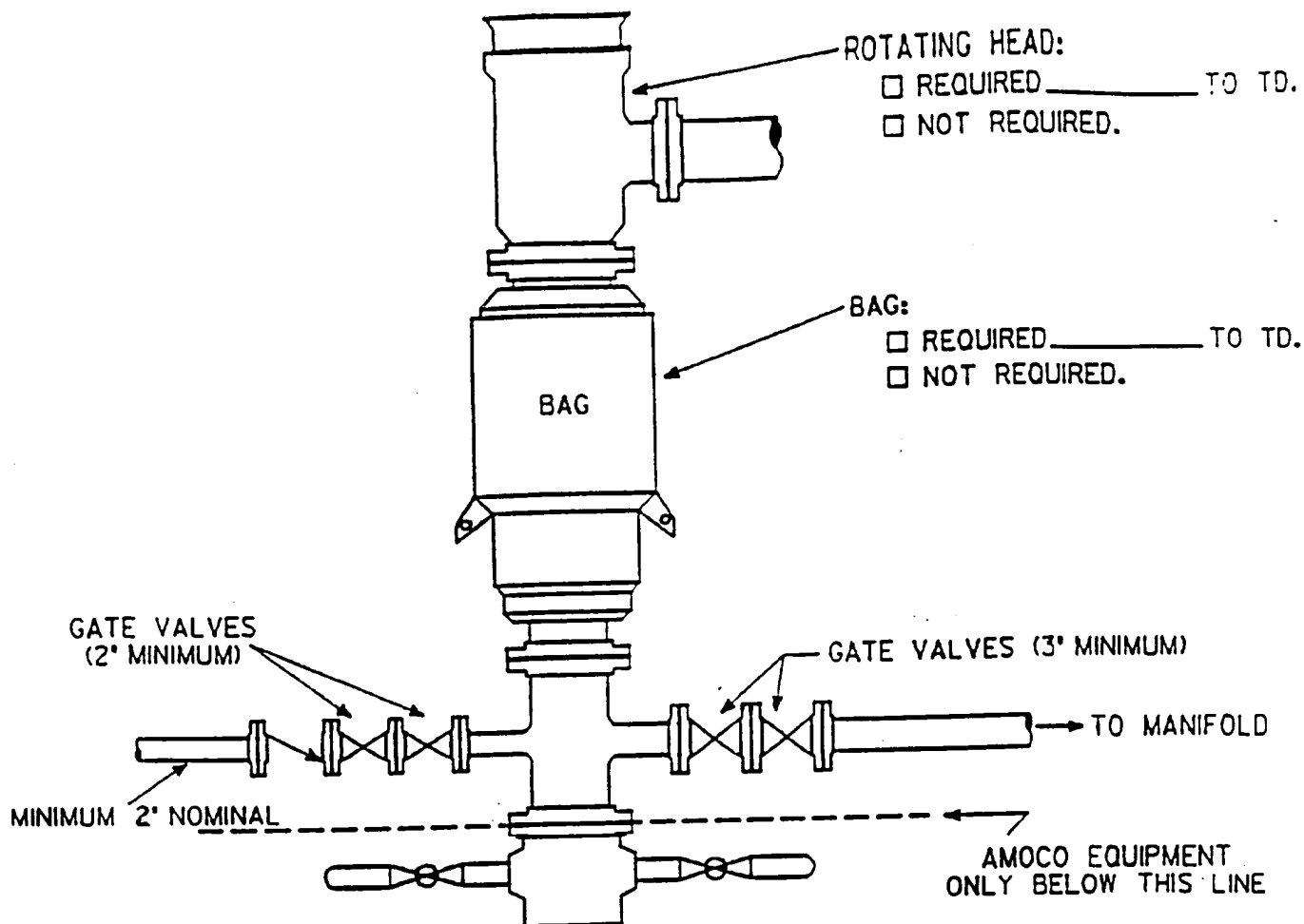
UL or lot no. G	Section 18	Township 22N	Range 34E	Lot Idn.	Feet from the 1961'	North/South line NORTH	Feet from the 1979'	East/West line EAST	County UNION
--------------------	---------------	-----------------	--------------	----------	------------------------	---------------------------	------------------------	------------------------	-----------------

¹¹ Bottom Hole Location If Different From Surface

UL or lot no.	Section	Township	Range	Lot Idn.	Feet from the	North/South line	Feet from the	East/West line	County
¹² Dedicated Acres 640	¹³ Joint or Infill	¹⁴ Consolidation Code U	¹⁵ Order No.						

NO ALLOWABLE WILL BE ASSIGNED TO THIS COMPLETION UNTIL ALL INTERESTS HAVE BEEN CONSOLIDATED
OR A NON-STANDARD UNIT HAS BEEN APPROVED BY THE DIVISION

¹⁶	¹⁷ OPERATOR CERTIFICATION I hereby certify that the information contained herein is true and complete to the best of my knowledge and belief. Signature LINDA OATES Printed Name Sr. Administrative Assistant Title June 1, 1995 Date
	¹⁸ SURVEYOR CERTIFICATION I hereby certify that the well location shown on this plat was plotted from field notes of actual surveys made by me or under my supervision, and that the same is true and correct to the best of my belief. February 15, 1995 Date of Survey Signature and Seal of Professional Surveyor LARRY A. FISHER Certificate Number 11013



District I
PO Box 1980, Hobbs, NM 88241-1980
District II
PO Drawer DD, Artesia, NM 88211-0719
District III
1000 Rio Brazos Rd., Aztec, NM 87410
District IV
PO Box 2088, Santa Fe, NM 87504-2088

State of New Mexico
Energy, Minerals & Natural Resources Department

OIL CONSERVATION DIVISION
PO Box 2088
Santa Fe, NM 87504-2088

Form C-101
Revised February 21, 1994
Instructions on back
Submit to Appropriate District Office
State Lease - 6 Copies
Fee Lease - 5 Copies

☐ AMENDED REPORT

APPLICATION FOR PERMIT TO DRILL, RE-ENTER, DEEPEN, PLUGBACK, OR ADD A ZONE

¹ Operator Name and Address. AMOCO PRODUCTION COMPANY P. O. BOX 606 CLAYTON, NEW MEXICO 88415		² OGRID Number 000778
³ Property Code 000335	⁴ Property Name BDCDGU 2234	⁵ Well No. 181

⁷ Surface Location

UL or lot no.	Section	Township	Range	Lot Idn	Feet from the	North/South line	Feet from the	East/West line	County
G	18	22N	34E		1961'	NORTH	1979'	EAST	UNION

⁸ Proposed Bottom Hole Location If Different From Surface

UL or lot no.	Section	Township	Range	Lot Idn	Feet from the	North/South line	Feet from the	East/West line	County

⁹ Proposed Pool 1 BRAVO DOME CARBON DIOXIDE GAS (640)	¹⁰ Proposed Pool 2
---	-------------------------------

¹¹ Work Type Code N	¹² Well Type Code C	¹³ Cable/Rotary R	¹⁴ Lease Type Code P	¹⁵ Ground Level Elevation
¹⁶ Multiple NO	¹⁷ Proposed Depth 2470	¹⁸ Formation TUBB	¹⁹ Contractor SITTON	²⁰ Spud Date JULY 1, 1995

²¹ Proposed Casing and Cement Program

Hole Size	Casing Size	Casing weight/foot	Setting Depth	Sacks of Cement	Estimated TOC
12.250"	8.625"	24#/FT STEEL	700 FT.	450 SACKS	SURFACE
7.875"	5.50"	5.91#/FT FGLASS	2400 FT.	270 SACKS	SURFACE
		15.50#/FT STEEL			

²² Describe the proposed program. If this application is to DEEPEN or PLUG BACK give the data on the present productive zone and proposed new productive zone. Describe the blowout prevention program, if any. Use additional sheets if necessary.

MUD PROGRAM 0-700' FRESH WATER/NATIVE MUD
700'-2400' FRESH WATER/STARCH/GEL

BOP PROGRAM ATTACHED

²³ I hereby certify that the information given above is true and complete to the best of my knowledge and belief.

Signature:

Printed name:

LINDA OATES

Title:

SR. ADMINISTRATIVE ASSISTANT

Date:

JUNE 1, 1995

Phone:

713/366-4510

OIL CONSERVATION DIVISION

Approved by:

Title:

DISTRICT SUPERVISOR

Approval Date:

6/16/95

Expiration Date:

6/16/96

Conditions of Approval:

Attached ☐

District I
PO Box 1980, Hobbs, NM 88241-1980
District II
PO Drawer DD, Artesia, NM 88211-0719
District III
1000 Rio Brazos Rd., Aztec, NM 87410
District IV
PO Box 2088, Santa Fe, NM 87504-2088

State of New Mexico
Energy, Minerals & Natural Resources Department

OIL CONSERVATION DIVISION
PO Box 2088
Santa Fe, NM 87504-2088

Form C-102
Revised February 21, 1994
Instructions on back
Submit to Appropriate District Office
State Lease - 4 Copies
Fee Lease - 3 Copies

☐ AMENDED REPORT

WELL LOCATION AND ACREAGE DEDICATION PLAT

¹ API Number		² Pool Code 96010	³ Pool Name BRAVO DOME CARBON DIOXIDE GAS (640)
⁴ Property Code 000335	⁵ Property Name BDCDGU 2234		⁶ Well Number 181
⁷ OGRID No. 000778	⁸ Operator Name AMOCO PRODUCTION COMPANY		⁹ Elevation 4929.80'

¹⁰ Surface Location

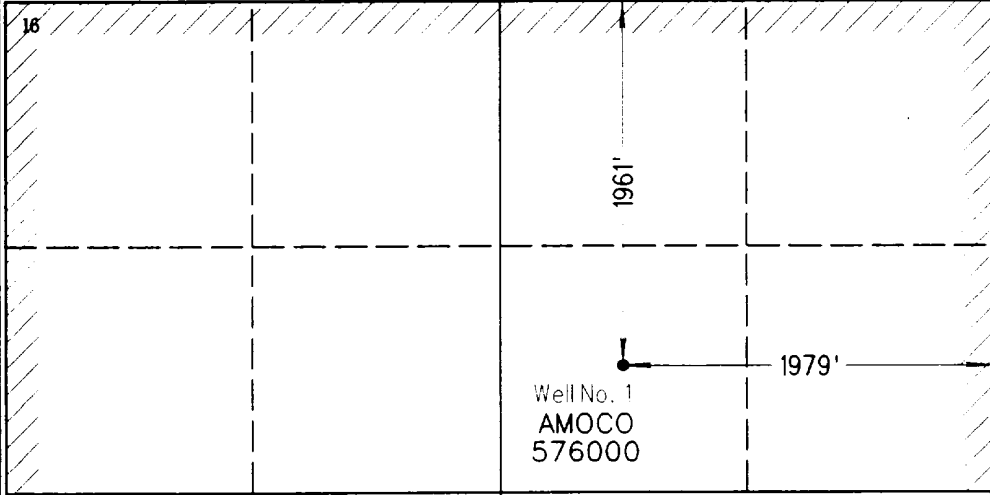

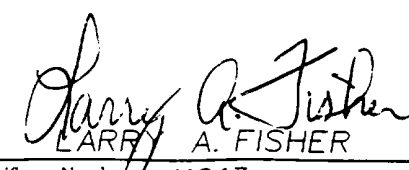
UL or lot no. G	Section 18	Township 22N	Range 34E	Lot Idn.	Feet from the 1961'	North/South line NORTH	Feet from the 1979'	East/West line EAST	County UNION
--------------------	---------------	-----------------	--------------	----------	------------------------	---------------------------	------------------------	------------------------	-----------------

¹¹ Bottom Hole Location If Different From Surface

UL or lot no.	Section	Township	Range	Lot Idn.	Feet from the	North/South line	Feet from the	East/West line	County
---------------	---------	----------	-------	----------	---------------	------------------	---------------	----------------	--------

¹² Dedicated Acres 640	¹³ Joint or Infill	¹⁴ Consolidation Code U	¹⁵ Order No.
--------------------------------------	-------------------------------	---------------------------------------	-------------------------

NO ALLOWABLE WILL BE ASSIGNED TO THIS COMPLETION UNTIL ALL INTERESTS HAVE BEEN CONSOLIDATED
OR A NON-STANDARD UNIT HAS BEEN APPROVED BY THE DIVISION

¹⁶ 	¹⁷ OPERATOR CERTIFICATION I hereby certify that the information contained herein is true and complete to the best of my knowledge and belief.  Signature LINDA OATES Printed Name Sr. Administrative Assistant Title June 1, 1995 Date
	¹⁸ SURVEYOR CERTIFICATION I hereby certify that the well location shown on this plat was plotted from field notes of actual surveys made by me or under my supervision, and that the same is true and correct to the best of my belief. February 15, 1995 Date of Survey Signature and Seal of Professional Surveyor  LARRY A. FISHER Certificate Number 11013

