

District I  
PO Box 1980, Hobbs, NM 88241-1980  
District II  
PO Drawer DD, Artesia, NM 88211-0719  
District III  
1000 Rio Brazos Rd., Aztec, NM 87410  
District IV  
PO Box 2088, Santa Fe, NM 87504-2088

State of New Mexico  
Energy, Minerals & Natural Resources Department

OIL CONSERVATION DIVISION  
PO Box 2088  
Santa Fe, NM 87504-2088

Form C-101  
Revised February 21, 1994  
Instructions on back  
Submit to Appropriate District Office  
State Lease - 6 Copies  
Fee Lease - 5 Copies

☐ AMENDED REPORT

APPLICATION FOR PERMIT TO DRILL, RE-ENTER, DEEPEN, PLUGBACK, OR ADD A ZONE

Operator Name and Address:  AMOCO PRODUCTION COMPANY P. O. BOX 606 CLAYTON, NEW MEXICO 88415		GRID Number 000778
		API Number 30-059-20339
Property Code 000335	Property Name BDCDGU 2234	Well No. 191

Surface Location

UL or lot no.	Section	Township	Range	Lot Ida	Feet from the	North/South line	Feet from the	East/West line	County
G	19	22N	34E		1999'	NORTH	2053'	EAST	UNION

Proposed Bottom Hole Location If Different From Surface

UL or lot no.	Section	Township	Range	Lot Ida	Feet from the	North/South line	Feet from the	East/West line	County

Proposed Pool 1

BRAVO DOME CARBON DIOXIDE GAS (640)

Proposed Pool 2

Work Type Code N	Well Type Code C	Cable/Rotary R	Lease Type Code P	Ground Level Elevation
Multiple NO	Proposed Depth 2470	Formation TUBB	Contractor SITTON	Spud Date JULY 1, 1995

Proposed Casing and Cement Program

Hole Size	Casing Size	Casing weight/foot	Setting Depth	Sacks of Cement	Estimated TOC
12.250"	8.625"	24#/FT STEEL	700 FT.	450 SACKS	SURFACE
7.875"	5.50"	5.91#/FT FGLASS	2400 FT.	270 SACKS	SURFACE
		15.50#/FT STEEL			

Describe the proposed program. If this application is to DEEPEN or PLUG BACK give the data on the present productive zone and proposed new productive zone. Describe the blowout prevention program, if any. Use additional sheets if necessary.

MUD PROGRAM 0-700' FRESH WATER/NATIVE MUD  
700'-2400' FRESH WATER/STARCH/GEL

BOP PROGRAM ATTACHED

I hereby certify that the information given above is true and complete to the best of my knowledge and belief.

Signature:

*Linda Oates*

Printed name:

LINDA OATES

Title:

SR. ADMINISTRATIVE ASSISTANT

Date:

JUNE 1, 1995

Phone:

713/366-4510

OIL CONSERVATION DIVISION

Approved by:

*Ry E. Johnson*

Title:

DISTRICT SUPERVISOR

Approval Date:

6/16/95

Expiration Date:

6/16/96

Conditions of Approval:

Attached ☐

District I  
PO Box 1980, Hobbs, NM 88241-1980  
District II  
PO Drawer DD, Artesia, NM 88211-0719  
District III  
1000 Rio Brazos Rd., Aztec, NM 87410  
District IV  
PO Box 2088, Santa Fe, NM 87504-2088

State of New Mexico  
Energy, Minerals & Natural Resources Department

OIL CONSERVATION DIVISION  
PO Box 2088  
Santa Fe, NM 87504-2088

Form C-102  
Revised February 21, 1994  
Instructions on back  
Submit to Appropriate District Office  
State Lease - 4 Copies  
Fee Lease - 3 Copies

☐ AMENDED REPORT

WELL LOCATION AND ACREAGE DEDICATION PLAT

<sup>1</sup> API Number	<sup>2</sup> Pool Code 96010	<sup>3</sup> Pool Name BRAVO DOME CARBON DIOXIDE GAS (640)
<sup>4</sup> Property Code 000335	<sup>5</sup> Property Name BDCDGU 2234	<sup>6</sup> Well Number 191
<sup>7</sup> OGRID No. 000778	<sup>8</sup> Operator Name AMOCO PRODUCTION COMPANY	<sup>9</sup> Elevation 4936.40'

<sup>10</sup> Surface Location

UL or lot no. G	Section 19	Township 22N	Range 34E	Lot Idn.	Feet from the 1999'	North/South line NORTH	Feet from the 2053'	East/West line EAST	County UNION
--------------------	---------------	-----------------	--------------	----------	------------------------	---------------------------	------------------------	------------------------	-----------------

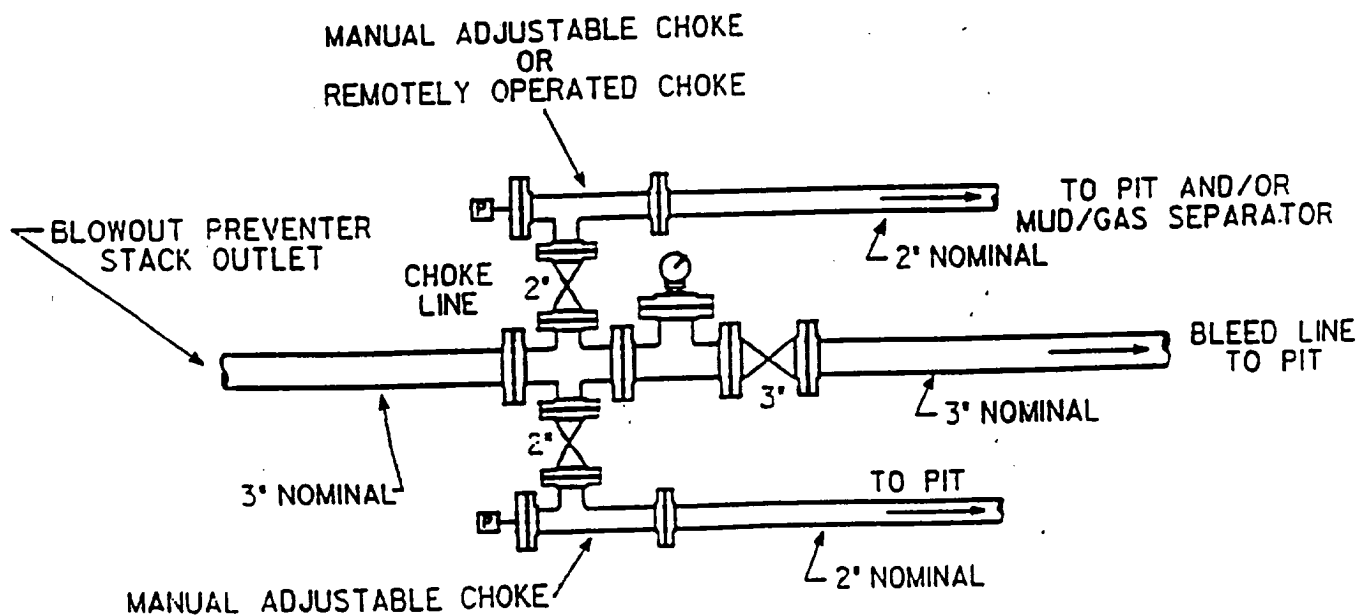
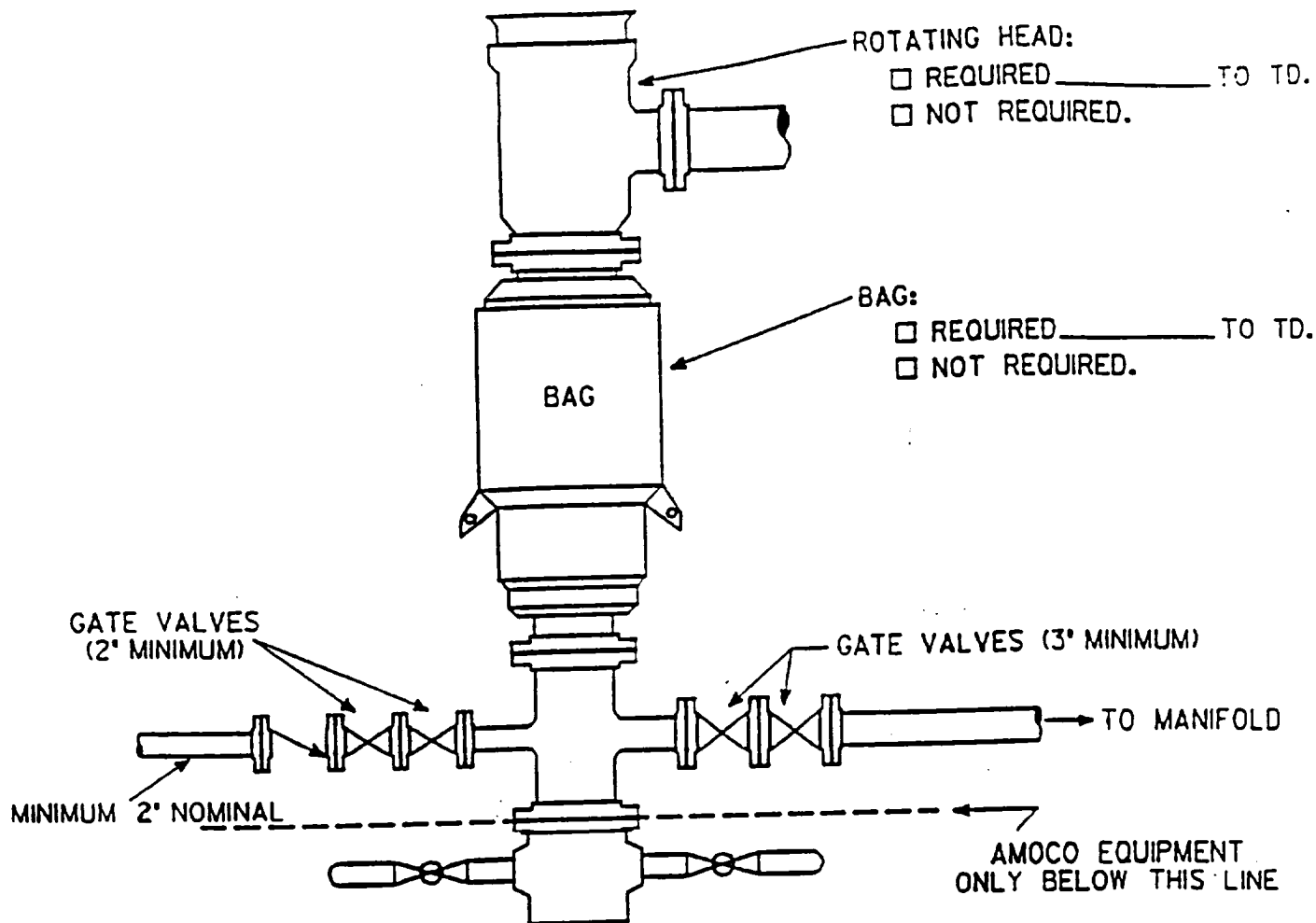
<sup>11</sup> Bottom Hole Location If Different From Surface

UL or lot no.	Section	Township	Range	Lot Idn.	Feet from the	North/South line	Feet from the	East/West line	County
---------------	---------	----------	-------	----------	---------------	------------------	---------------	----------------	--------

<sup>12</sup> Dedicated Acres 640	<sup>13</sup> Joint or Infill	<sup>14</sup> Consolidation Code U	<sup>15</sup> Order No.
--------------------------------------	-------------------------------	---------------------------------------	-------------------------

NO ALLOWABLE WILL BE ASSIGNED TO THIS COMPLETION UNTIL ALL INTERESTS HAVE BEEN CONSOLIDATED  
OR A NON-STANDARD UNIT HAS BEEN APPROVED BY THE DIVISION

<div><p><sup>16</sup></p></div>	<div><p><sup>17</sup> OPERATOR CERTIFICATION</p><p>I hereby certify that the information contained herein is true and complete to the best of my knowledge and belief.</p><p><i>Linda Oates</i> Signature LINDA OATES Printed Name Sr. Administrative Assistant Title June 1, 1995 Date</p></div>
	<div><p><sup>18</sup> SURVEYOR CERTIFICATION</p><p>I hereby certify that the well location shown on this plat was plotted from field notes of actual surveys made by me or under my supervision, and that the same is true and correct to the best of my belief.</p><p>February 15, 1995 Date of Survey Signature and Seal of Professional Surveyor <i>Larry A. Fisher</i> LARRY A. FISHER Certificate Number 11013</p></div>



District I  
PO Box 1980, Hobbs, NM 88241-1980  
District II  
PO Drawer DD, Artesia, NM 88211-0719  
District III  
1000 Rio Brazos Rd., Aztec, NM 87410  
District IV  
PO Box 2088, Santa Fe, NM 87504-2088

State of New Mexico  
Energy, Minerals & Natural Resources Department

OIL CONSERVATION DIVISION  
PO Box 2088  
Santa Fe, NM 87504-2088

Form C-101  
Revised February 21, 1994  
Instructions on back  
Submit to Appropriate District Office  
State Lease - 6 Copies  
Fee Lease - 5 Copies

☐ AMENDED REPORT

APPLICATION FOR PERMIT TO DRILL, RE-ENTER, DEEPEN, PLUGBACK, OR ADD A ZONE

Operator Name and Address: AMOCO PRODUCTION COMPANY P. O. BOX 606 CLAYTON, NEW MEXICO 88415		OGRID Number 000778
Property Code 000335	Property Name BDCDGU 2234	Well No. 191

7 Surface Location

UL or lot no.	Section	Township	Range	Lot Idn	Feet from the	North/South line	Feet from the	East/West line	County
G	19	22N	34E		1999'	NORTH	2053'	EAST	UNION

8 Proposed Bottom Hole Location If Different From Surface

UL or lot no.	Section	Township	Range	Lot Idn	Feet from the	North/South line	Feet from the	East/West line	County
					16 Proposed Pool 2				
BRAVO DOME CARBON DIOXIDE GAS (640)									

Work Type Code N	Well Type Code C	Cable/Rotary R	Lease Type Code P	Ground Level Elevation
Multiple NO	Proposed Depth 2470	Formation TUBB	Contractor SITTON	Spud Date JULY 1, 1995

21 Proposed Casing and Cement Program

Hole Size	Casing Size	Casing weight/foot	Setting Depth	Sacks of Cement	Estimated TOC
12.250"	8.625"	24#/FT STEEL	700 FT.	450 SACKS	SURFACE
7.875"	5.50"	5.91#/FT FGLASS	2400 FT.	270 SACKS	SURFACE
		15.50#/FT STEEL			

22 Describe the proposed program. If this application is to DEEPEN or PLUG BACK give the data on the present productive zone and proposed new productive zone. Describe the blowout prevention program, if any. Use additional sheets if necessary.

MUD PROGRAM 0-700' FRESH WATER/NATIVE MUD  
700'-2400' FRESH WATER/STARCH/GEL

BOP PROGRAM ATTACHED

23 I hereby certify that the information given above is true and complete to the best of my knowledge and belief.

Signature: *Linda Oates*

Printed name:  
LINDA OATES

Title:  
SR. ADMINISTRATIVE ASSISTANT

Date:  
JUNE 1, 1995

Phone:  
713/366-4510

OIL CONSERVATION DIVISION

Approved by:

Title: *R. E. Johnson*  
DISTRICT SUPERVISOR

Approval Date:

6/16/95

Expiration Date:

6/16/96

Conditions of Approval:

Attached ☐

District I  
PO Box 1980, Hobbs, NM 88241-1980  
District II  
PO Drawer DD, Artesia, NM 88211-0719  
District III  
1000 Rio Brazos Rd., Aztec, NM 87410  
District IV  
PO Box 2088, Santa Fe, NM 87504-2088

State of New Mexico  
Energy, Minerals & Natural Resources Department

OIL CONSERVATION DIVISION  
PO Box 2088  
Santa Fe, NM 87504-2088

Form C-102  
Revised February 21, 1994  
Instructions on back  
Submit to Appropriate District Office  
State Lease - 4 Copies  
Fee Lease - 3 Copies

☐ AMENDED REPORT

WELL LOCATION AND ACREAGE DEDICATION PLAT

<sup>1</sup> API Number	<sup>2</sup> Pool Code 96010	<sup>3</sup> Pool Name BRAVO DOME CARBON DIOXIDE GAS (640)
<sup>4</sup> Property Code 000335	<sup>5</sup> Property Name BDCDGU 2234	<sup>6</sup> Well Number 191
<sup>7</sup> OGRID No. 000778	<sup>8</sup> Operator Name AMOCO PRODUCTION COMPANY	<sup>9</sup> Elevation 4936.40'

<sup>10</sup> Surface Location

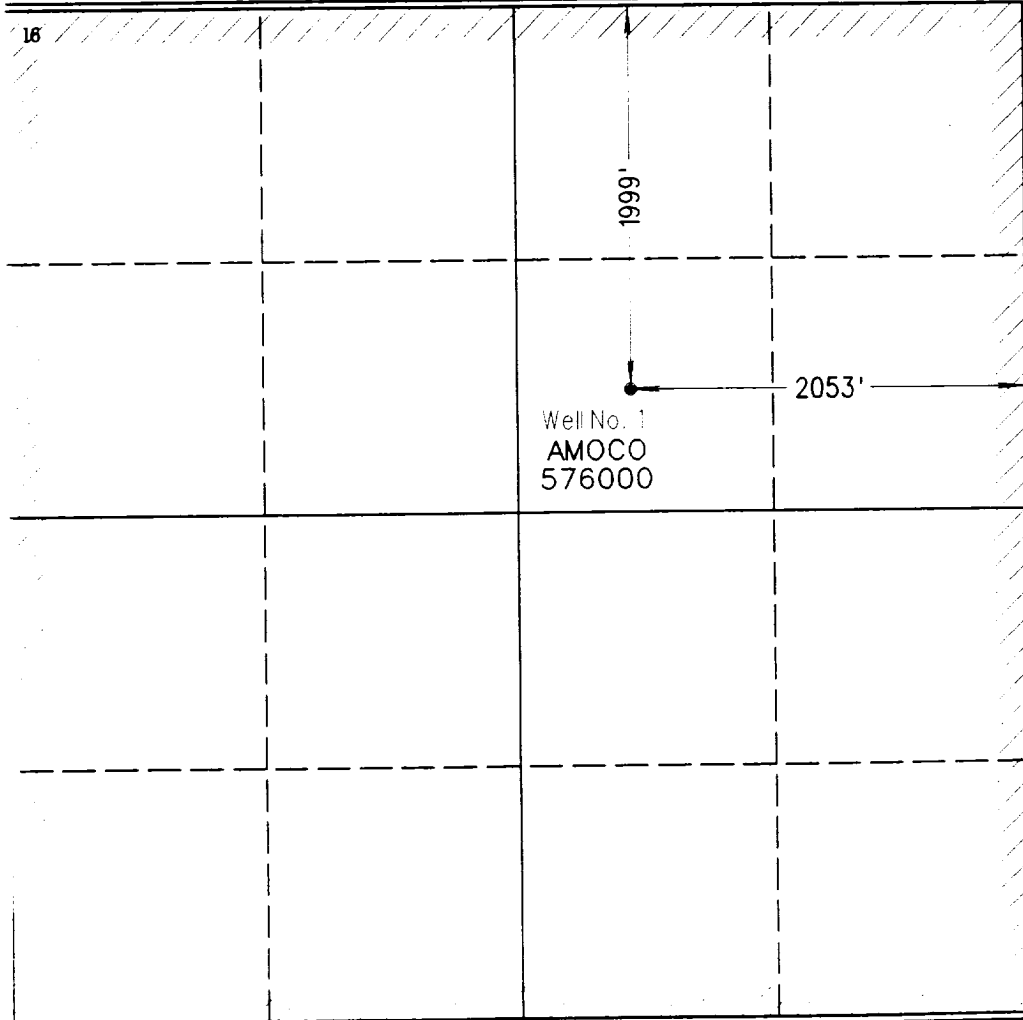
UL or lot no. G	Section 19	Township 22N	Range 34E	Lot Idn.	Feet from the 1999'	North/South line NORTH	Feet from the 2053'	East/West line EAST	County UNION
--------------------	---------------	-----------------	--------------	----------	------------------------	---------------------------	------------------------	------------------------	-----------------

<sup>11</sup> Bottom Hole Location If Different From Surface

UL or lot no.	Section	Township	Range	Lot Idn.	Feet from the	North/South line	Feet from the	East/West line	County
---------------	---------	----------	-------	----------	---------------	------------------	---------------	----------------	--------

<sup>12</sup> Dedicated Acres 640	<sup>13</sup> Joint or Infill	<sup>14</sup> Consolidation Code U	<sup>15</sup> Order No.
--------------------------------------	-------------------------------	---------------------------------------	-------------------------

NO ALLOWABLE WILL BE ASSIGNED TO THIS COMPLETION UNTIL ALL INTERESTS HAVE BEEN CONSOLIDATED  
OR A NON-STANDARD UNIT HAS BEEN APPROVED BY THE DIVISION

<div><p><sup>16</sup></p></div>	<div><p><sup>17</sup> OPERATOR CERTIFICATION</p><p>I hereby certify that the information contained herein is true and complete to the best of my knowledge and belief.</p><p><i>Linda Oates</i> Signature LINDA OATES Printed Name Sr. Administrative Assistant Title June 1, 1995 Date</p></div>
	<div><p><sup>18</sup> SURVEYOR CERTIFICATION</p><p>I hereby certify that the well location shown on this plat was plotted from field notes of actual surveys made by me or under my supervision, and that the same is true and correct to the best of my belief.</p><p>February 15, 1995 Date of Survey Signature and Seal of Professional Surveyor <i>Larry A. Fisher</i> LARRY A. FISHER Certificate Number 11013</p></div>

