

NUMBER OF COPIES RECEIVED	
DISTRIBUTION	
SANTA FE	
FILE	
U.S.G.S.	
LAND OFFICE	
TRANSPORTER	OIL GAS
PRODUCTION OFFICE	
OPERATOR	

NEW MEXICO OIL CONSERVATION COMMISSION
Santa Fe, New Mexico

Form C-101
Revised (12/1/55)

NOTICE OF INTENTION TO DRILL

Notice must be given to the District Office of the Oil Conservation Commission and approval obtained before drilling or recompletion begins. If changes in the proposed plan are considered advisable, a copy of this notice showing such changes will be returned to the sender. Submit this notice in **QUINTUPPLICATE**. One copy will be returned following approval. See additional instructions in Rules and Regulations of the Commission. If State Land submit 6 Copies Attach Form C-128 in triplicate to first 3 copies of form C-101

Keyes, Oklahoma
(Place)

July 26, 1961
(Date)

OIL CONSERVATION COMMISSION
SANTA FE, NEW MEXICO

Gentlemen:

ILLEGIBLE

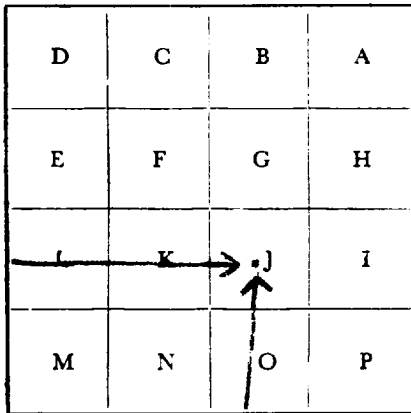
You are hereby notified that it is our intention to commence the Drilling of a well to be known as

ILLEGIBLE Oil Company
(Company, or Operator)

A. B. Hughes, Jr. (Lease), Well No. 1A, in A (Unit) The well is

located 3300 feet from the West line and 1980 feet from the South line of Section 33, T. 22N, R. 36 E, NMPM.

(GIVE LOCATION FROM SECTION LINE) Undefined Pool, Union County



If State Land the Oil and Gas Lease is No

If patented land the owner is A. B. Hughes, Jr.
Address Sedan, New Mexico

We propose to drill well with drilling equipment as follows: Rotary & Cable tools

The status of plugging bond is on file with the Oil Conservation Commission, (2000 foot 1 well plugging bond)

Drilling Contractor Panhandle Irrigation Company
109-11 West Broadway
Panhandle, Texas

We intend to complete this well in the Lower Dakota formation at an approximate depth of 1365 feet.

CASING PROGRAM

We propose to use the following strings of Casing and to cement them as indicated:

Size of Hole	Size of Casing	Weight per Foot	New or Second Hand	Depth	Sacks Cement
<u>7 7/8"</u>	<u>5"</u>	<u>11.50</u>	<u>Second Hand</u>		
<u>9 1/2"</u>	<u>8 5/8"</u>	<u>24.00</u>			
		<u>See Attachment</u>			

If changes in the above plans become advisable we will notify you immediately.

ADDITIONAL INFORMATION (If recompletion give full details of proposed plan of work.)

Approved July 28, 1961
[Signature], 19

Except as follows:

COLLECT AND SACK SAMPLES FOR
NEW MEXICO BUREAU OF MINES, SOCORRO
AT AT LEAST TEN FOOT INTERVALS

OIL CONSERVATION COMMISSION

By [Signature]

Sincerely yours,

ILLEGIBLE Oil Company
(Company or Operator)
By [Signature]

Position Partner in Ownership
Send Communications regarding well to

Name A. M. Hollingworth
Address

NUMBER OF COPIES RECEIVED	
DISTRIBUTION	
SANTA FE	
FILE	
U.S.G.S.	
LAND OFFICE	
TRANSPORTER	OIL GAS
PRODUCTION OFFICE	
OPERATOR	

NEW MEXICO OIL CONSERVATION COMMISSION
WELL LOCATION AND ACREAGE DEDICATION PLAT
 SEE INSTRUCTIONS FOR COMPLETING THIS FORM ON THE REVERSE SIDE

FORM C-128
Revised 5/1/57

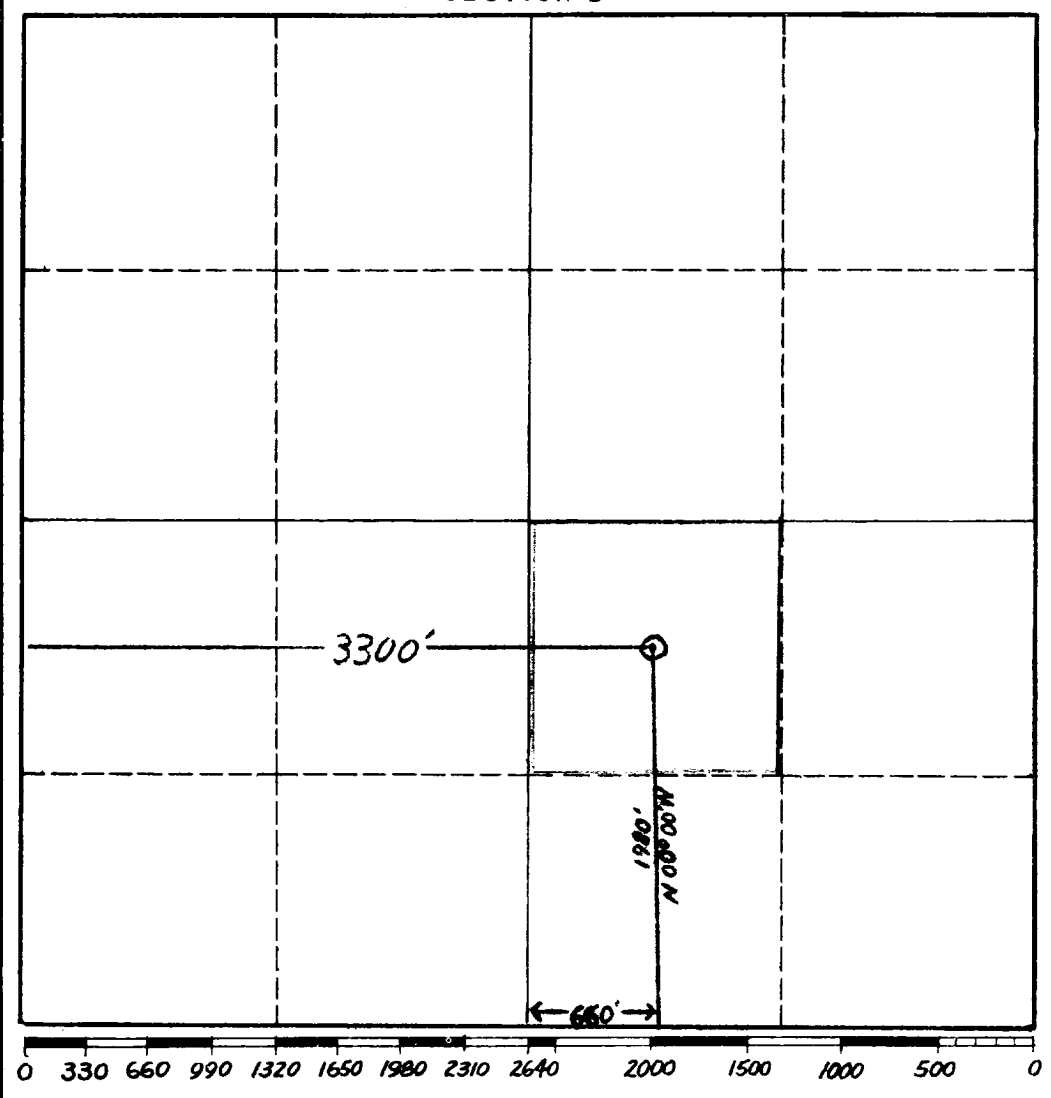
SECTION A

Operator H H & E OIL COMPANY		Lease A.B. HUGHES JR.		Well No. 1 A
Unit Letter A	Section 33	Township 22 North	Range 36 East	County UNION
Actual Footage Location of Well: 3300 feet from the West line and 1980 feet from the South line				
Ground Level Elev. 4409	Producing Formation lower Dakota	Pool Undefined	Dedicated Acreage: 40 Acres	

1. Is the Operator the only owner in the dedicated acreage outlined on the plat below? YES ☒ NO ____ . ("Owner" means the person who has the right to drill into and to produce from any pool and to appropriate the production either for himself or for himself and another. (65-3-29 (e) NMSA 1935 Comp.)
2. If the answer to question one is "no," have the interests of all the owners been consolidated by communization agreement or otherwise? YES ____ NO ____ . If answer is "yes," Type of Consolidation _____
3. If the answer to question two is "no," list all the owners and their respective interests below:

Owner A.B. Hughes Jr.	Land Description None
None, New Mexico	

SECTION B



CERTIFICATION

I hereby certify that the information in SECTION A above is true and complete to the best of my knowledge and belief.

Name <i>G. M. Hollingsworth</i>
Position Partner in Ownership
Company H H & E OIL COMPANY
Date 7/ 26/ 61

I hereby certify that the well location shown on the plat in SECTION B was plotted from field notes of actual surveys made by me or under my supervision, and that the same is true and correct to the best of my knowledge and belief.

Date Surveyed July 25, 1961
Registered Professional Engineer and/or Land Surveyor <i>Kenneth J. Allison</i>
Certificate No. 3235

INSTRUCTIONS FOR COMPLETION OF FORM C-128

1. Operator shall furnish and certify to the information called for in Section A.
2. Operator shall outline the dedicated acreage for *both* oil and gas wells on the plat in Section B.
3. A registered professional engineer or land surveyor registered in the State of New Mexico or approved by the Commission shall show on the plat the location of the well and certify this information in the space provided.
4. All distances shown on the plat must be from the outer boundaries of the Section.
5. If additional space is needed for listing owners and their respective interests as required in question 3 of Section A, please use space below.

This area has had very little exploration so therefore it is not known where surface casing will need to be set.

A $9\frac{1}{2}$ " hole will be drilled and when water is found 8-5/8" casing will be cemented deep enough to seal off the water. An amount of cement will be used necessary to circulate from set depth to surface.

If a completion is to be made, 5" casing will be set and the amount of cement used will be that necessary to circulate from bottom of hole to surface.

This has been discussed with J. E. Kaptenia by telephone, 7-26-61.

R. M. Hollingworth

This area has had very little exploration so therefore it is not known where surface casing will need to be set.

A $9\frac{1}{2}$ " hole will be drilled and when water is found 8-5/8" casing will be cemented deep enough to seal off the water. An amount of cement will be used necessary to circulate from set depth to surface.

If a completion is to be made, 5" casing will be set and the amount of cement used will be that necessary to circulate from bottom of hole to surface.

This has been discussed with J. E. Kaptenia by telephone, 7-26-61.

P. M. Hollingworth

