

NEW MEXICO OIL CONSERVATION COMMISSION
Santa Fe, New Mexico

Form G-101
Revised (12/1/55)

NOTICE OF INTENTION TO DRILL

Notice must be given to the District Office of the Oil Conservation Commission and approval obtained before drilling or recompletion begins. If changes in the proposed plan are considered advisable, a copy of this notice showing such changes will be returned to the sender. Submit this notice in QUINTUPLICATE. One copy will be returned following approval. See additional instructions in Rules and Regulations of the Commission. If State Land submit 6 Copies Attach Form G-128 in triplicate to first 3 copies of form G-101

Union County, New Mexico

(Place)

January 23, 1961

(Date)

OIL CONSERVATION COMMISSION
SANTA FE, NEW MEXICO

Gentlemen:

You are hereby notified that it is our intention to commence the Drilling of a well to be known as

GREGG OIL CO., INC.

(Company or Operator)

WITT

(Lease)

, Well No. 1, in P The well is

located 660 feet from the South line and 660 feet from the

East line of Section 13, T. 29-N, R. 35-E, NMPM.

(GIVE LOCATION FROM SECTION LINE) Wildcat Pool, Union County

If State Land the Oil and Gas Lease is No

If patented land the owner is Witt

Address Clayton, New Mexico

We propose to drill well with drilling equipment as follows: Rotary Tools

The status of plugging bond is Blanket Bond

Drilling Contractor Thompson Exploration Drilling Co.

P. O. Box 1657

Lubbock, Texas

We intend to complete this well in the formation at an approximate depth of 4500 feet.

CASING PROGRAM

We propose to use the following strings of Casing and to cement them as indicated:

Size of Hole	Size of Casing	Weight per Foot	New or Second Hand	Depth	Sacks Cement
9"	7"OD	20.00 lbs	new	600'	circulate to surface

If changes in the above plans become advisable we will notify you immediately.

ADDITIONAL INFORMATION (If recompletion give full details of proposed plan of work.)

Surface casing will be set and cemented through the Euter sand and approximately 55 feet into the red beds of the Triassic formation.

Approved January 26, 1961
Except as follows:

COLLECT AND SACK SAMPLES FOR
NEW MEXICO BUREAU OF MINES, SOCORRO
AT AT LEAST THE 200' INTERVALS
OIL CONSERVATION COMMISSION

By J. E. Napier

Sincerely yours,

GREGG OIL CO., INC.
(Company or Operator)

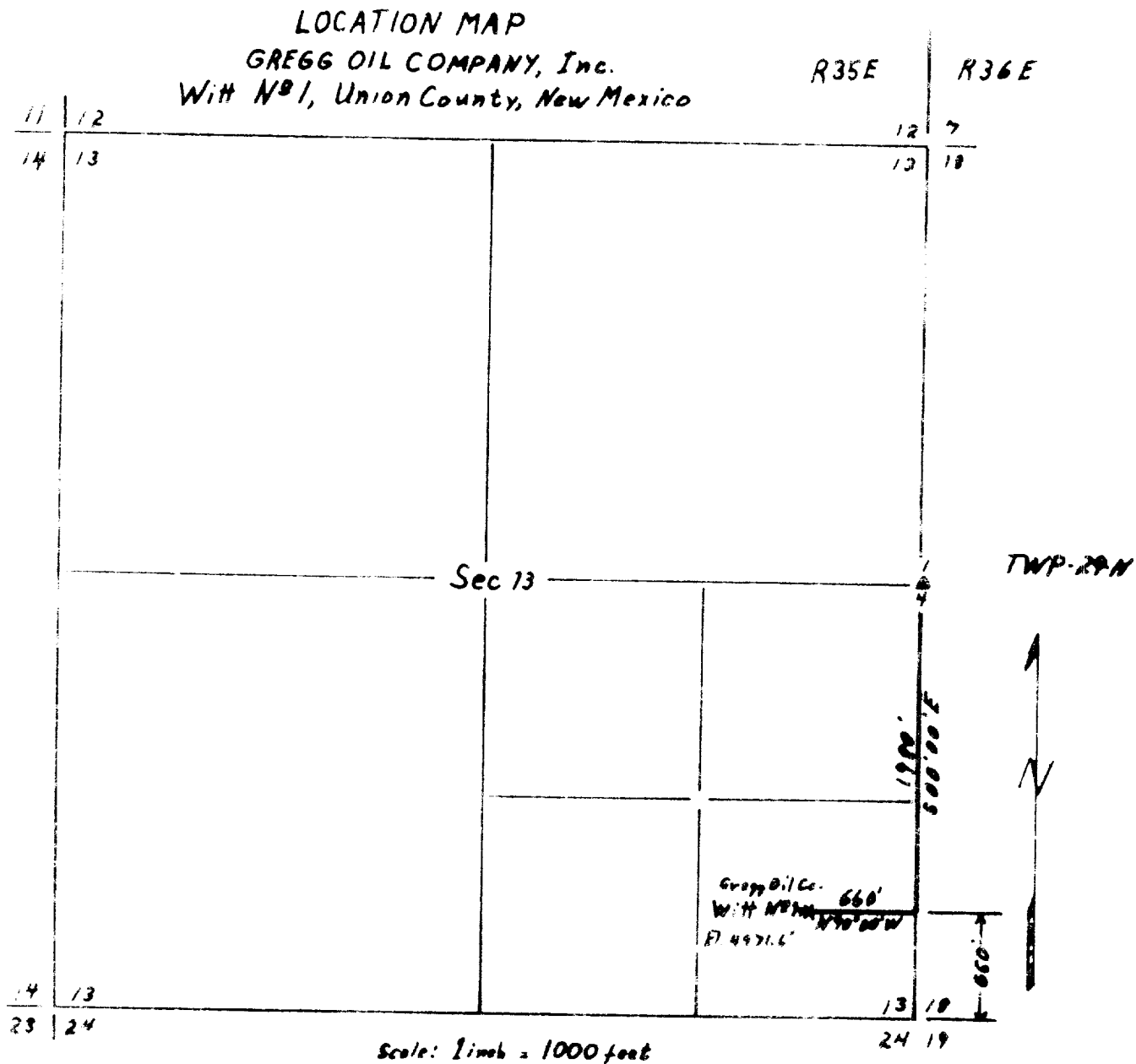
By Mary J. Wilson

Position Vice-President

Send Communications regarding well to

Name Gregg Oil Co., Inc.

Address 505 Gulf Bldg., Midland, Texas



I, Kenneth G. Alberson, hereby certify that I am the registered professional engineer and land surveyor who prepared the above map from field notes of actual surveys made by me or under my direction, and that the same are true and correct to the best of my knowledge and belief.

Kenneth G. Alberson
 Registered Professional Engineer and
 Land Surveyor
 License No. 3225

Memo

From
James E. Kapteina
Petroleum Engineer

C-102

Gregg Oil Co.

To: Witt

P-13-29N-35E

Rotary

4800' proposed depth

Verbal Approval granted to
commence drilling 1-25-61