

**NEW MEXICO OIL CONSERVATION COMMISSION
WELL LOCATION AND ACREAGE DEDICATION PLAT**

Form C-102
Supersedes C-128
Effective 1-1-65

All distances must be from the outer boundaries of the Section.

Operator REFINERS PETROLEUM CORP.			Lease Romero		Well No. 1
Unit Letter I	Section 32	Township 6 North	Range 3 West	County Valencia County, N. Mex.	
Actual Footage Location of Well: <div style="display: flex; justify-content: space-between;"> 330 feet from the East line and 2010 feet from the South line </div>					
Ground Level Elev: 6271	Producing Formation Pennsylvanian	Pool Wildcat	Dedicated Acreage: 40 Acres		

1. Outline the acreage dedicated to the subject well by colored pencil or hatchure marks on the plat below.
2. If more than one lease is dedicated to the well, outline each and identify the ownership thereof (both as to working interest and royalty).

ONE LEASE ONLY

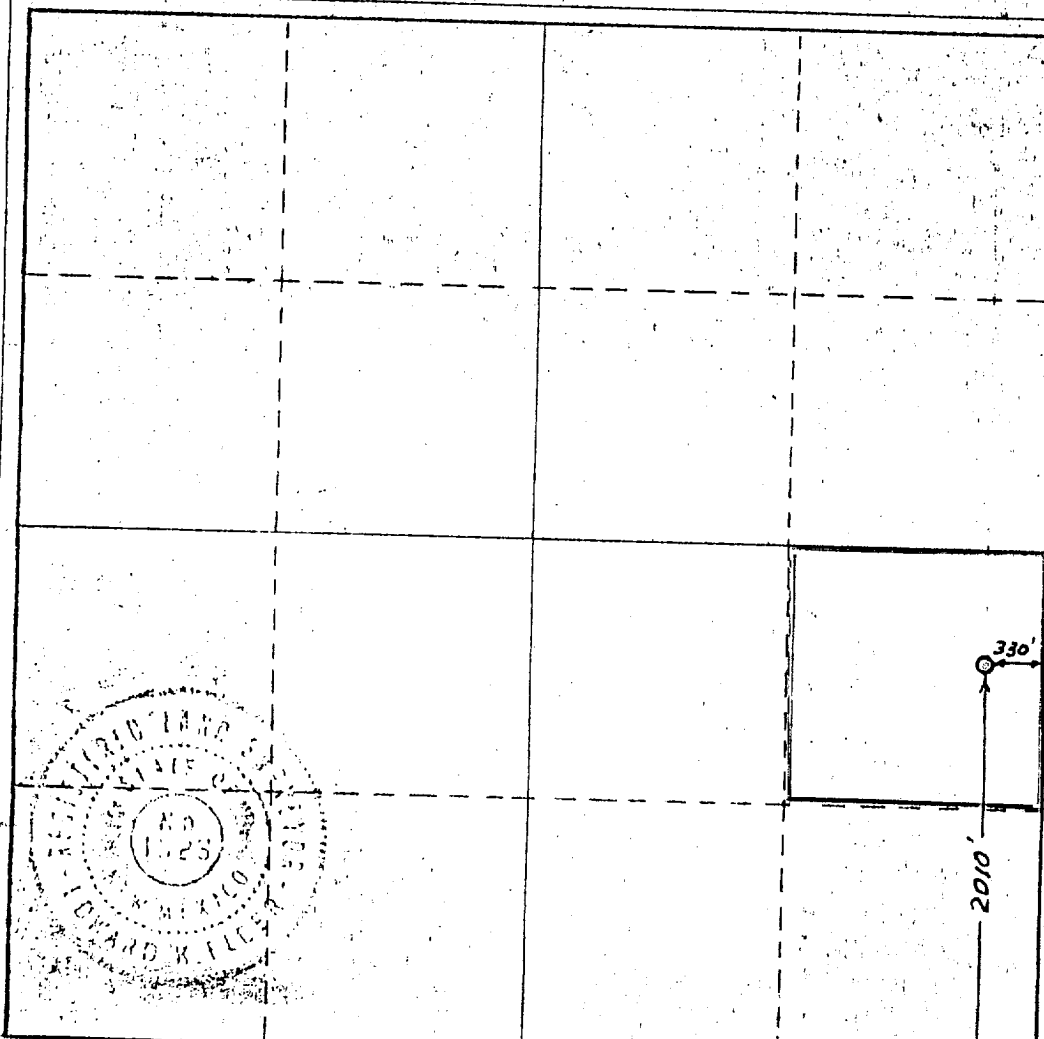
3. If more than one lease of different ownership is dedicated to the well, have the interests of all owners been consolidated by communitization, unitization, force-pooling, etc?

ONE LEASE ONLY

☐ Yes ☐ No If answer is "yes," type of consolidation _____

If answer is "no," list the owners and tract descriptions which have actually been consolidated. (Use reverse side of this form if necessary.) _____

No allowable will be assigned to the well until all interests have been consolidated (by communitization, unitization, forced-pooling, or otherwise) or until a non-standard unit, eliminating such interests, has been approved by the Commission.



CERTIFICATION

I hereby certify that the information contained herein is true and complete to the best of my knowledge and belief.

Val R. Reese
Name
VAL R. REESE

Position
CONSULTING GEOLOGIST

Company
REFINERS PETROLEUM CORP.

Date
March 5, 1971

I hereby certify that the well location shown on this plat was plotted from field notes of actual surveys made by me or under my supervision, and that the same is true and correct to the best of my knowledge and belief.

February 2, 1971

Date Surveyed
Edward K. Edder
Registered Professional ~~XXXX~~
~~XXX~~ Land Surveyor

