

NO. OF COPIES RECEIVED	
DISTRIBUTION	
SANTA FE	1
FILE	1
U.S.G.S.	2
LAND OFFICE	1
OPERATOR	1

NEW MEXICO OIL CONSERVATION COMMISSION

Form C-101
Revised 1-1-65

API # 30-061-20017

5A. Indicate Type of Lease	
STATE <input type="checkbox"/>	FEE <input checked="" type="checkbox"/>
5. State Oil & Gas Lease No.	

APPLICATION FOR PERMIT TO DRILL, DEEPEN, OR PLUG BACK

1a. Type of Work		7. Unit Agreement Name	
b. Type of Well OIL WELL <input checked="" type="checkbox"/> GAS WELL <input type="checkbox"/> OTHER <input type="checkbox"/>		8. Farm or Lease Name Penteco-Trinity	
2. Name of Operator BRANA CORPORATION		9. Well No. 1	
3. Address of Operator 1223 First Interstate Bldg, 320 Gold Ave.SW, Albuquerque, NM 87102		10. Field and Pool, or Wildcat Wildcat-Penn.	
4. Location of Well UNIT LETTER <u>G</u> LOCATED <u>2500</u> FEET FROM THE <u>North</u> LINE AND <u>2330</u> FEET FROM THE <u>East</u> LINE OF SEC. <u>19</u> TWP. <u>6N</u> RGE. <u>2W</u> NMPM		12. County Valencia	
19. Proposed Depth 3000		19A. Formation Pennsylvanian	
20. Rotary or C.T. Rotary		21. Elevations (Show whether DF, RT, etc.) 5572 ung. grnd.	
21A. Kind & Status Plug. Bond Blanket 298/053		22. Approx. Date Work will start December 10, 1984	

PROPOSED CASING AND CEMENT PROGRAM

SIZE OF HOLE	SIZE OF CASING	WEIGHT PER FOOT	SETTING DEPTH	SACKS OF CEMENT	EST. TOP
12 1/4	8 5/8	32	200	90	Circ. to surface
6 3/4	4 1/2	11	3000	200	1500'

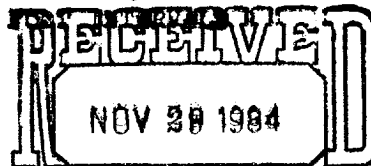
Plan to spud 12 1/4" hole and drill to 205' and set 200' of 8 5/8" casing with sufficient cement to circulate to surface. Drill 6 3/4" hole to 3000' or depth sufficient to test the Pennsylvanian formation and run appropriate logs. Zones of significant interest will be tested by D.S.T. when penetrated. If production is indicated, 4 1/2" casing will be run to total depth, cemented with 200 sxs, perforated and stimulated if required.

Double Gate Hydraulic BOP tested to 3000 psi will be on well during all drilling operations.

APPROVED FOR 90 DAYS
PER 2-21-85

NEW MEXICO BUREAU OF MINES, SOCORRO
AT AT LEAST TEN

OIL CONSERVATION COMMISSION TO BE NOTIFIED
WITHIN 24 HOURS OF BEGINNING OPERATIONS



IN ABOVE SPACE DESCRIBE PROPOSED PROGRAM: IF PROPOSAL IS TO DEEPEN OR PLUG BACK, GIVE DATA ON LOCATION OF NEW PRODUCTION ZONE, GIVE BLOWOUT PREVENTER PROGRAM, IF ANY.

I hereby certify that the information above is true and complete to the best of my knowledge and belief.

Signed Morris B. Jones Title Morris B. Jones, Engineer Date November 28, 1984

(This space for State Use)

APPROVED BY [Signature] TITLE DISTRICT SUPERVISOR DATE 11-29-84

CONDITIONS OF APPROVAL, IF ANY: No allowable will be assigned until Non-standard location has been approved by this office.

OIL CONSERVATION DIVISION

P. O. BOX 2088

SANTA FE, NEW MEXICO 87501

Form C-102
Revised 10-1-78

All distances must be from the outer boundaries of the Section.

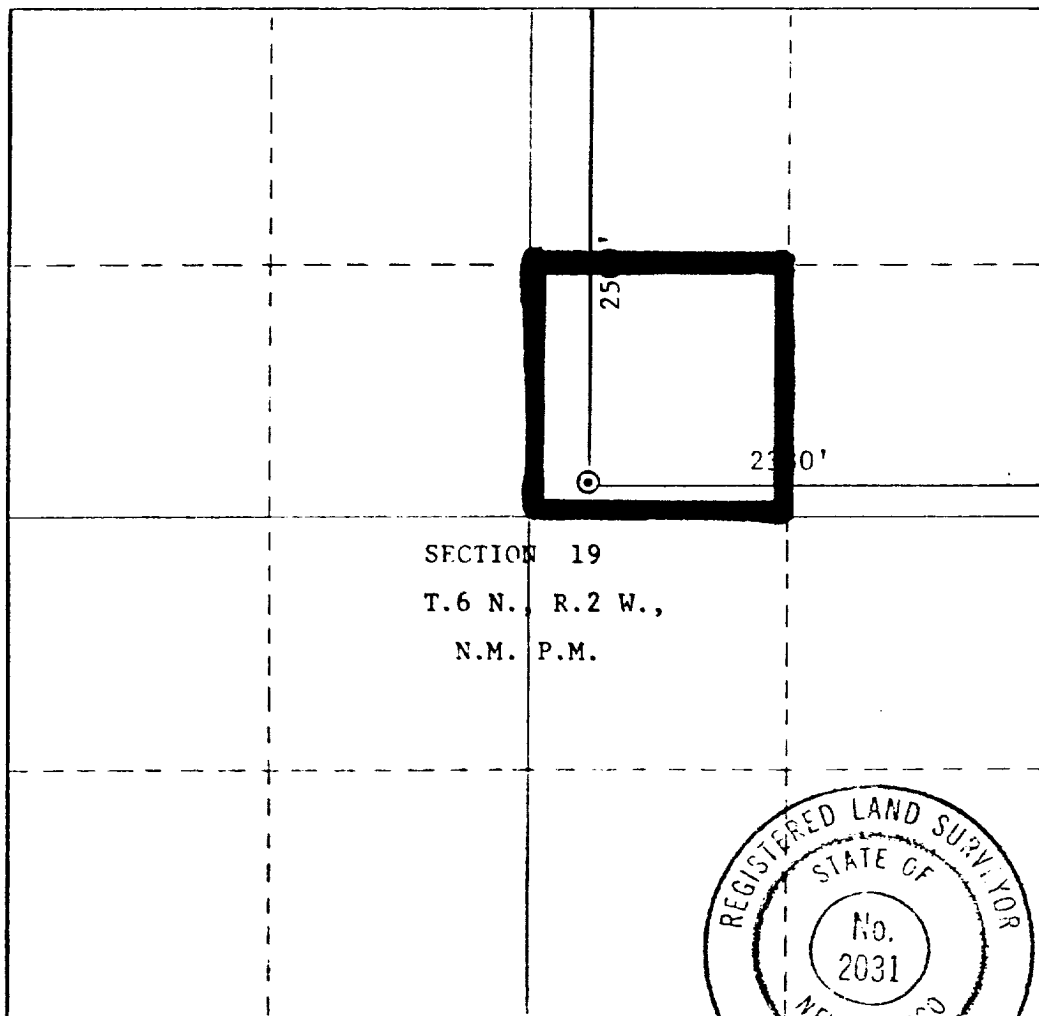
Operator: BRANA CORPORATION		Lease Penteco-Trinity		Well No. 1
Unit Letter G	Section 19	Township 6 North	Range 2 West	County Valencia
Actual Footage Location of Well: 2500' feet from the north line and 2330' feet from the east line				
Ground Level Elev. 5572	Producing Formation Pennsylvanian	Pool Wildcat	Dedicated Acreage: 40.00 Acres	

1. Outline the acreage dedicated to the subject well by colored pencil or hachure marks on the plat below.
2. If more than one lease is dedicated to the well, outline each and identify the ownership thereof (both as to working interest and royalty).
3. If more than one lease of different ownership is dedicated to the well, have the interests of all owners been consolidated by communitization, unitization, force-pooling, etc?

☐ Yes ☐ No If answer is "yes," type of consolidation _____

If answer is "no," list the owners and tract descriptions which have actually been consolidated. (Use reverse side of this form if necessary.) _____

No allowable will be assigned to the well until all interests have been consolidated (by communitization, unitization, forced-pooling, or otherwise) or until a non-standard unit, eliminating such interests, has been approved by the Commission.



CERTIFICATION

I hereby certify that the information contained herein is true and complete to the best of my knowledge and belief.

Name
Morris B. Jones

Position
Engineer

Company
Brana Corporation

Date
November 28, 1984

I hereby certify that the well location shown on this plat was plotted from field notes of actual surveys made by me or under my supervision, and that the same is true and correct to the best of my knowledge and belief.

Date Surveyed
Nov. 12, 1984

Registered Professional Engineer
and/or Land Surveyor **Fred D. Marmon**

Fred D. Marmon

Certificate No. **2031**