

NO. OF COPIES RECEIVED	
DISTRIBUTION	
SANTA FE	
FILE	
U.S.G.S.	
LAND OFFICE	
OPERATOR	

NEW MEXICO OIL CONSERVATION COMMISSION

Form C-101
Revised 1-1-65

API #
30-061-20018

5A. Indicate Type of Lease	
STATE <input type="checkbox"/>	FEE <input checked="" type="checkbox"/>
5. State Oil & Gas Lease No.	

APPLICATION FOR PERMIT TO DRILL, DEEPEN, OR PLUG BACK

1a. Type of Work		7. Unit Agreement Name	
b. Type of Well DRILL <input checked="" type="checkbox"/> DEEPEN <input type="checkbox"/> PLUG BACK <input type="checkbox"/>		8. Farm or Lease Name Penteco-Trinity	
OIL WELL <input checked="" type="checkbox"/> GAS WELL <input type="checkbox"/> OTHER <input type="checkbox"/>		9. Well No. 2	
2. Name of Operator BRANA CORPORATION		10. Field and Pool, or Wildcat Wildcat	
3. Address of Operator 1223 First Interstate Bldg, 320 Gold Ave, SW, Albuquerque, NM 87102		12. County Valencia	
4. Location of Well UNIT LETTER <u>G</u> LOCATED <u>1670</u> FEET FROM THE <u>North</u> LINE AND <u>1960</u> FEET FROM THE <u>East</u> LINE OF SEC. <u>19</u> TWP. <u>6N</u> RGE. <u>2W</u> NMPM		19. Proposed Depth 3000	
		19A. Formation Pennsylvanian	
		20. Rotary or C.T. Rotary	
21. Elevations (Show whether DT, RT, etc.) 5570 Ungr. grnd.		21A. Kind & Status Plug. Bond Blanket	
		21B. Drilling Contractor Salazar Bros.	
		22. Approx. Date Work will start Jan. 3, 1985	

23.

PROPOSED CASING AND CEMENT PROGRAM

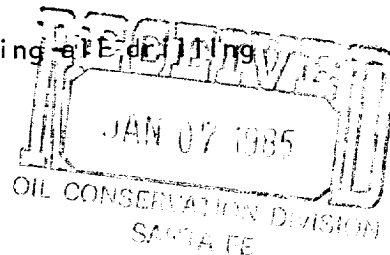
SIZE OF HOLE	SIZE OF CASING	WEIGHT PER FOOT	SETTING DEPTH	SACKS OF CEMENT	EST. TOP
9 7/8	7 1/2	20.00	400'	100	Circulate
6 1/4	4 1/2	11.00	3000'	200	1100'

Plan to spud 9 7/8" hole and drill to 405' and set 400' of 7" casing with sufficient cement to circulate to surface. Drill 6 1/4" hole to 3000' or depth sufficient to test the Pennsylvanian formation and run appropriate logs. Zones of significant interest will be tested by D.S.T. when penetrated. If production is indicated, 4 1/2" casing will be run to total depth, cemented with 200 sxs, perforated and stimulated if required.

Double Gate Hydraulic BOP tested to 3000 psi will be on well during start-up operations.

APPROVAL VALID FOR 90 DAYS
PERMIT EXPIRES 4-8-85
OIL CONSERVATION DIVISION
SANTA FE

COLLECT AND BACK SAMPLES FOR
NEW MEXICO BUREAU OF MINES, SOCORRO
AT AT LEAST TEN FOOT INTERVALS



IN ABOVE SPACE DESCRIBE PROPOSED PROGRAM; IF PROPOSAL IS TO DEEPEN OR PLUG BACK, GIVE DATA ON PRESENT PRODUCTIVE ZONE AND PROPOSED NEW PRODUCTIVE ZONE. GIVE BLOWOUT PREVENTER PROGRAM, IF ANY.

I hereby certify that the information above is true and complete to the best of my knowledge and belief.

Signed Morris B. Jones Title Morris B. Jones, Engineer Date 1-3-85

(This space for State Use)

DISTRICT SUPERVISOR

APPROVED BY [Signature] TITLE DATE 1-7-85

CONDITIONS OF APPROVAL, IF ANY:

OIL CONSERVATION COMMISSION TO BE NOTIFIED
WITHIN 24 HOURS OF BEGINNING OPERATIONS

OIL CONSERVATION DIVISION

P. O. BOX 2088

SANTA FE, NEW MEXICO 87501

Form C-102
Revised 10-1-78

All distances must be from the outer boundaries of the Section.

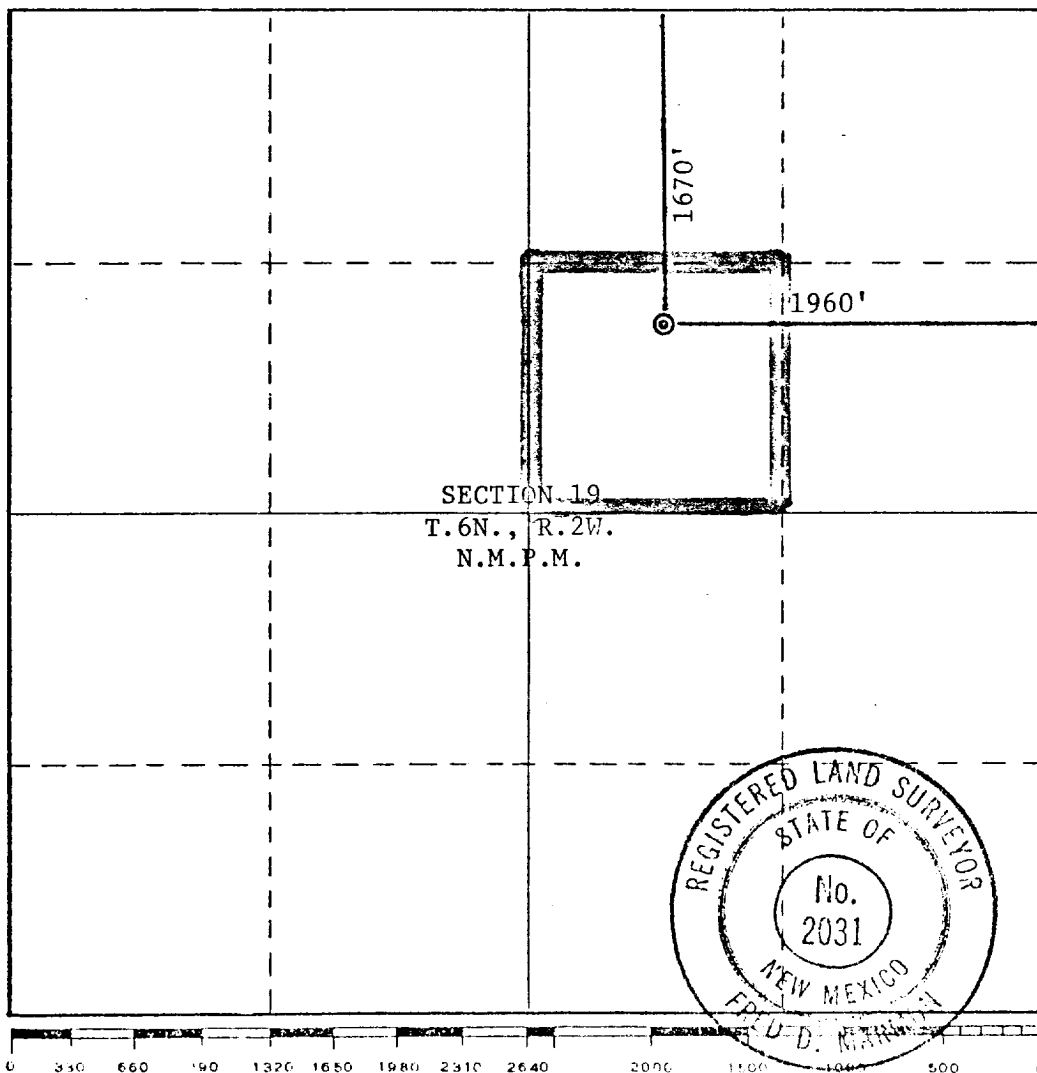
Operator BRANA CORPORATION			Lease Penteco-Trinity		Well No. 2
Unit Letter G	Section 19	Township 6 North	Range 2 West	County Valencia	
Actual Footage Location of Well: 1670 feet from the North line and 1960 feet from the East line					
Ground Level Elev. 5570	Producing Formation Pennsylvanian		Pool Wildcat		Dedicated Acreage: 40.00 Acres

1. Outline the acreage dedicated to the subject well by colored pencil or hachure marks on the plat below.
2. If more than one lease is dedicated to the well, outline each and identify the ownership thereof (both as to working interest and royalty).
3. If more than one lease of different ownership is dedicated to the well, have the interests of all owners been consolidated by communitization, unitization, force-pooling, etc?

☐ Yes ☐ No If answer is "yes," type of consolidation _____

If answer is "no," list the owners and tract descriptions which have actually been consolidated. (Use reverse side of this form if necessary.) _____

No allowable will be assigned to the well until all interests have been consolidated (by communitization, unitization, forced-pooling, or otherwise) or until a non-standard unit, eliminating such interests, has been approved by the Commission.



CERTIFICATION

I hereby certify that the information contained herein is true and complete to the best of my knowledge and belief.

Name

Morris B. Jones

Position

Engineer

Company

Brana Corporation

Date

January 3, 1985

I hereby certify that the well location shown on this plat was plotted from field notes of actual surveys made by me or under my supervision, and that the same is true and correct to the best of my knowledge and belief.

Date Surveyed

January 2, 1985

Registered Professional Engineer
and/or Land Surveyor

Fred D. Marmon

Fred D. Marmon

Certificate No.

N. M. 2031