

GW - 267

GENERAL CORRESPONDENCE

YEAR(S):

2001-1996

THE SANTA FE
NEW MEXICAN
Founded 1849

OIL CONSERVATION DIV.
01 NOV -8 PM 4:30

NM OIL CONSERVATION DIVISION
ATTN: ED MARTIN

AD NUMBER: 232794 ACCOUNT: 56689
LEGAL NO: 70278 P.O.#: 02199000249
293 LINES 1 time(s) at \$ 129.16
AFFIDAVITS: 5.25
TAX: 8.40
TOTAL: 142.81

AFFIDAVIT OF PUBLICATION

STATE OF NEW MEXICO
COUNTY OF SANTA FE

I, _____ being first duly sworn declare and say that I am Legal Advertising Representative of THE SANTA FE NEW MEXICAN, a daily newspaper published in the English language, and having a general circulation in the Counties of Santa Fe and Los Alamos, State of New Mexico and being a Newspaper duly qualified to publish legal notices and advertisements under the provisions of Chapter 167 on Session Laws of 1937; that the publication #70278 a copy of which is hereto attached was published in said newspaper 1 day(s) between 10/26/2001 and 10/26/2001 and that the notice was published in the newspaper proper and not in any supplement; the first publication being on the 26 day of October, 2001 and that the undersigned has personal knowledge of the matter and things set forth in this affidavit.

/S/ _____
LEGAL ADVERTISEMENT REPRESENTATIVE

Subscribed and sworn to before me on this
26 day of October A.D., 2001

Notary _____

Commission Expires _____

NOTICE OF
PUBLICATION

STATE OF NEW MEXICO

ENERGY, MINERALS
AND
NATURAL RESOURCES
DEPARTMENT.
OIL CONSERVATION
DIVISION

Notice is hereby given that pursuant to New Mexico Water Quality Control Commission Regulations, the following discharge plan application has been submitted to the Director of the Oil Conservation Division, 1220 S. St. Francis, Santa Fe, New Mexico 87505, Telephone (505) 476-3440:

(GW-246) El Paso Field Services, Mr. Robert A. Price, Principal Environmental Scientist, 3300 North A Street, Building 2, Suite 200, Midland, Texas 79705, has submitted a discharge plan application renewal for their Axis #2 Compressor Station, located in the SW/4, NW/4, Section 15, Township 21 South, Range 27 East, NMPM, Eddy County, New Mexico. Any potential discharge at the facility will be stored in a closed top receptacle. Groundwater most likely to be affected by a spill, leak, or accidental discharge to surface is at a depth of approximately 80 feet with a total dissolved solids concentration of approximately 1,090 mg/L. The discharge plan addresses how spills, leaks and other accidental discharges to the surface will be managed.

(GW-267) El Paso Field Services, Mr. Robert A. Price, Principal Environmental Scientist, 3300 North A Street, Building 2, Suite 200, Midland, Texas 79705, has submitted a discharge plan application renewal for their Bass James Compressor Station, located in the SW/4, SE/4, Section 36, Township 22 South, Range 30 East, NMPM, Eddy County, New Mexico. Any potential discharge at the facility will be stored in a closed top receptacle. Groundwater most likely to be affected by a spill, leak, or accidental discharge to surface is at a depth of approximately 250 feet with a total dissolved solids concentration of approximately 3,860 mg/L. The discharge plan addresses how spills, leaks and other accidental discharges to the surface will be managed.

(GW-241) El Paso Field Services, Mr. Robert A. Price, Principal Environmental Scientist, 3300 North A Street, Building 2, Suite 200, Midland, Texas 79705, has sub-

mitted a discharge plan application renewal for their Burton Flats North Compressor Station, located in the SE/4, NW/4, Section 14, Township 20 South, Range 28 East, NMPM, Eddy County, New Mexico. Approximately 3 gallons per day of wastewater will be stored on site in a closed top tank and disposed of offsite at an OCD approved facility. Groundwater most likely to be affected by a spill, leak, or accidental discharge to surface is at a depth of approximately 26 feet with a total dissolved solids concentration ranging from 188 to 15,000 mg/L. The discharge plan addresses how spills, leaks and other accidental discharges to the surface will be managed.

Any interested person may obtain further information from the Oil Conservation Division and may submit written comments to the Director of

the Oil Conservation Division at the address given above. The discharge plan application may be viewed at the above address between 8:00 a.m. and 4:00 p.m., Monday through Friday. Prior to ruling on any proposed discharge plan or its modification, the Director of the Oil Conservation Division shall allow at least thirty (30) days after the date of publication of this notice during which comments may be submitted to him and a public hearing may be requested by any interested person. Requests for a public hearing shall set forth the reasons why a hearing should be held. A hearing will be held if the Director determines there is significant public interest.

If no public hearing is held, the Director will approve or disapprove the proposed plan based on information available. If a public hearing is held, the director will approve or disapprove the proposed plan based on information in the plan and information submitted at the hearing.

GIVEN under the Seal of New Mexico Oil Conservation Commission at Santa Fe, New Mexico, on this 4th day of August 2000.

STATE OF NEW MEXICO
OIL CONSERVATION DIVISION

S E A L
LORI WROTENBERY, Director
Legal #70278
Pub. October 26, 2001

Affidavit of Publication

State of New Mexico,
County of Eddy, ss.

Dawn Higgins

being first duly sworn, on oath says:

That she is Business Manager
of the Carlsbad Current-Argus, a newspaper published
daily at the City of Carlsbad, in said county of Eddy, state
of New Mexico and of general paid circulation in said coun-
ty; that the same is a duly qualified newspaper under the
laws of the State wherein legal notices and advertisements
may be published; that the printed notice attached hereto
was published in the regular and entire edition of said
newspaper and not in supplement thereof on the date as
follows, to wit:

October 25 2001

2001

2001

2001

2001

2001

That the cost of publication is \$3.94

and that payment thereof has been made and will be
assessed as court costs.

Dawn Higgins

Subscribed and sworn to before me this

29 day of Oct, 2001

Notary Public

My commission expires 4/25/04

Notary Public

P.O# 02199003489

October 25, 2001

NOTICE OF PUBLICATION

STATE OF NEW MEXICO ENERGY, MIN- ERALS AND NATURAL RESOURCES DEPART- MENT OIL CONSERVA- TION DIVISION

Notice is hereby given
that pursuant to New
Mexico Water Quality
Control Commission Reg-
ulations, the following dis-
charge plan application
has been submitted to the
Director of the Oil Con-
servation Division, 1220
S. St. Francis, Santa Fe,
New Mexico 87505. Tele-
phone (505) 476-3440:

(GW-246) El Paso Field
Services, Mr. Robert A.
Price, Principal Environ-
ment Scientist, 3300
North A Street, Building
2, Suite 200, Midland,
Texas 79705, has sub-
mitted a discharge plan
application renewal for
their Axis #2 Compressor
Station, located in the
SW/4, NW/4, Section
15, Township 21, South,
Range 27, East, NMPM,
Eddy County, New Mexi-
co. Any potential dis-
charge at the facility will
be stored in a closed
top receptacle. Ground-
water most likely to be
affected by a spill, leak,
or accidental discharge
to surface is at a depth
of approximately 80 feet
with a total dissolved
solids concentration of
approximately 1,090 mg/L.
The discharge plan ad-
dresses how spills, leaks
and other accidental dis-
charges to the surface
will be managed.

(GW-287) El Paso Field
Services, Mr. Robert A.
Price, Principal Environ-
mental Scientist, 3300
North A Street, Building
2, Suite 200, Midland,
Texas 79705, has sub-
mitted a discharge plan
application renewal for
their Bass James Com-
pressor Station, located
in the SW/4, SE/4, Sec-
tion 36, Township 22,
South, Range 30 East,
NMPM, Eddy County,
New Mexico. Any poten-
tial discharge at the fa-
cility will be stored in a
closed top receptacle.
Groundwater most like-
ly to be affected by a
spill, leak, or accidental
discharge to surface is
at a depth of approxi-
mately 250 feet with a
total dissolved solids
concentration of ap-
proximately 3,860 mg/L.
The discharge plan ad-
dress how spills, leaks
and other accidental
discharges to the sur-
face will be managed.

(GW-241) El Paso Field
Services, Mr. Robert A.
Price, Principal Environ-
ment Scientist, 3300
North A Street, Building
2, Suite 200, Midland,
Texas 79705, has sub-
mitted a discharge plan
application renewal for
their Burton Flats North
Compressor Station, lo-
cated in the SE/4, NW/4,
Section 14, Township 20,
South, Range 28 East,
NMPM, Eddy County,
New Mexico. Approx-
imately 3 gallons per
day of waste water
will be stored on site in
a closed top tank and
disposed of offsite at an
OCDD approved facility.
Groundwater most like-
ly to be affected by a
spill, leak, or accidental
discharge to surface is
at a depth of approxi-
mately 26 feet with a to-
tal dissolved solids con-
centration ranging from
188 to 15,000 mg/L. The
discharge plan ad-
dresses how spills,
leaks and other acci-
dental discharges to the
surface will be man-
aged.

Any interested person
may obtain further infor-
mation from the Oil
Conservation Division
and may submit written
comments to the Director
of the Oil Conservation
Division, at the address
given above. The dis-
charge plan application
may be viewed at the
above address between
8:00 a.m. and 4:00 p.m.,
Monday through Friday.
Prior to ruling on any pro-
posed discharge plan or
its modification, the Di-
rector of the Oil Conser-
vation Division shall allow
at least thirty (30) days
after the date of publica-
tion of this notice during
which comments may be
submitted to him and a
public hearing may be
requested by any inter-
ested person. Requests
for a public hearing shall
set forth the reasons why
a hearing should be held.
A hearing will be held if
the Director determines
there is significant public
interest.

If no public hearing is
held, the Director will ap-
prove or disapprove the
proposed plan based on
information available. If
a public hearing is held,
the director will approve
or disapprove the proposed
plan based on information
in the plan and informa-
tion submitted at the
hearing.

GIVEN under the Seal of
New Mexico Oil Conserva-
tion Commission at San-
ta Fe, New Mexico, on
this 4th day of August
2000.

No 21595

01 OCT 32 PM 3:18

OIL CONSERVATION DIV.

THE SANTA FE
NEW MEXICAN
Founded 1849

NM OIL CONSERVATION DIVISION
ATTN: ED MARTIN

AD NUMBER: 232794 ACCOUNT: 56689
LEGAL NO: 70278 P.O.#: 02199000249
293 LINES 1 time(s) at \$ 129.16
AFFIDAVITS: 5.25
TAX: 8.40
TOTAL: 142.81

AFFIDAVIT OF PUBLICATION

STATE OF NEW MEXICO
COUNTY OF SANTA FE

I, MM Weideman being first duly sworn declare and say that I am Legal Advertising Representative of THE SANTA FE NEW MEXICAN, a daily newspaper published in the English language, and having a general circulation in the Counties of Santa Fe and Los Alamos, State of New Mexico and being a Newspaper duly qualified to publish legal notices and advertisements under the provisions of Chapter 167 on Session Laws of 1937; that the publication #70278 a copy of which is hereto attached was published in said newspaper 1 day(s) between 10/26/2001 and 10/26/2001 and that the notice was published in the newspaper proper and not in any supplement; the first publication being on the 26 day of October, 2001 and that the undersigned has personal knowledge of the matter and things set forth in this affidavit.

/s/ MM Weideman
LEGAL ADVERTISEMENT REPRESENTATIVE

Subscribed and sworn to before me on this
26 day of October A.D., 2001

Notary Laura R. Hrding
Commission Expires 11/23/03

NOTICE OF
PUBLICATION

STATE OF NEW MEXICO
ENERGY, MINERALS

AND
NATURAL RESOURCES
DEPARTMENT,
OIL CONSERVATION
DIVISION

Notice is hereby given that pursuant to New Mexico Water Quality Control Commission Regulations, the following discharge plan application has been submitted to the Director of the Oil Conservation Division, 1220 S. St. Francis, Santa Fe, New Mexico 87505, Telephone (505) 476-3440:

(GW-246) El Paso Field Services, Mr. Robert A. Price, Principal Environmental Scientist, 3300 North A Street, Building 2, Suite 200, Midland, Texas 79705, has submitted a discharge plan application renewal for their Axis #2 Compressor Station, located in the SW/4, NW/4, Section 15, Township 21 South, Range 27 East, NMPM, Eddy County, New Mexico. Any potential discharge at the facility will be stored in a closed top receptacle. Groundwater most likely to be affected by a spill, leak, or accidental discharge to surface is at a depth of approximately 80 feet with a total dissolved solids concentration of approximately 1,090 mg/L. The discharge plan addresses how spills, leaks and other accidental discharges to the surface will be managed.

(GW-267) El Paso Field Services, Mr. Robert A. Price, Principal Environmental Scientist, 3300 North A Street, Building 2, Suite 200, Midland, Texas 79705, has submitted a discharge plan application renewal for their Bass James Compressor Station, located in the SW/4, SE/4, Section 36, Township 22 South, Range 30 East, NMPM, Eddy County, New Mexico. Any potential discharge at the facility will be stored in a closed top receptacle. Groundwater most likely to be affected by a spill, leak, or accidental discharge to surface is at a depth of approximately 250 feet with a total dissolved solids concentration of approximately 3,860 mg/L. The discharge plan addresses how spills, leaks and other accidental discharges to the surface will be managed.

(GW-241) El Paso Field Services, Mr. Robert A. Price, Principal Environmental Scientist, 3300 North A Street, Building 2, Suite 200, Midland, Texas 79705, has sub-

mitted a discharge plan application renewal for their Burton Flats North Compressor Station, located in the SE/4, NW/4, Section 14, Township 20 South, Range 28 East, NMPM, Eddy County, New Mexico. Approximately 3 gallons per day of waste water will be stored on site in a closed top tank and disposed of offsite at an OCD approved facility. Groundwater most likely to be affected by a spill, leak, or accidental discharge to surface is at a depth of approximately 26 feet with a total dissolved solids concentration ranging from 188 to 15,000 mg/L. The discharge plan addresses how spills, leaks and other accidental discharges to the surface will be managed.

Any interested person may obtain further information from the Oil Conservation Division and may submit written comments to the Director of

the Oil Conservation Division at the address given above. The discharge plan application may be viewed at the above address between 8:00 a.m. and 4:00 p.m., Monday through Friday. Prior to ruling on any proposed discharge plan or its modification, the Director of the Oil Conservation Division shall allow at least thirty (30) days after the date of publication of this notice during which comments may be submitted to him and a public hearing may be requested by any interested person. Requests for a public hearing shall set forth the reasons why a hearing should be held. A hearing will be held if the Director determines there is significant public interest.

If no public hearing is held, the Director will approve or disapprove the proposed plan based on information available. If a public hearing is held, the director will approve or disapprove the proposed plan based on information in the plan and information submitted at the hearing.

GIVEN under the Seal of New Mexico Oil Conservation Commission at Santa Fe, New Mexico, on this 4th day of August 2000.

STATE OF NEW MEXICO
OIL CONSERVATION DIVISION

S. E. A. L.
TORI WROTENBERY, Director
Legal #70278
Pub. October 26, 2001



NEW MEXICO ENERGY, MINERALS and NATURAL RESOURCES DEPARTMENT

GARY E. JOHNSON

Governor

Jennifer A. Salisbury

Cabinet Secretary

Lori Wrotenbery

Director

Oil Conservation Division

NOTICE OF PUBLICATION

STATE OF NEW MEXICO ENERGY, MINERALS AND NATURAL RESOURCES DEPARTMENT OIL CONSERVATION DIVISION

Notice is hereby given that pursuant to New Mexico Water Quality Control Commission Regulations, the following discharge plan application has been submitted to the Director of the Oil Conservation Division, 1220 S. St. Francis, Santa Fe, New Mexico 87505, Telephone (505) 476-3440:

(GW-246) El Paso Field Services, Mr. Robert A. Price, Principal Environmental Scientist, 3300 North A Street, Building 2, Suite 200, Midland, Texas 79705, has submitted a discharge plan application renewal for their Axis #2 Compressor Station, located in the SW/4, NW/4, Section 15, Township 21 South, Range 27 East, NMPM, Eddy County, New Mexico. Any potential discharge at the facility will be stored in a closed top receptacle. Groundwater most likely to be affected by a spill, leak, or accidental discharge to surface is at a depth of approximately 80 feet with a total dissolved solids concentration of approximately 1,090 mg/L. The discharge plan addresses how spills, leaks and other accidental discharges to the surface will be managed.

(GW-267) El Paso Field Services, Mr. Robert A. Price, Principal Environmental Scientist, 3300 North A Street, Building 2, Suite 200, Midland, Texas 79705, has submitted a discharge plan application renewal for their Bass James Compressor Station, located in the SW/4, SE/4, Section 36, Township 22 South, Range 30 East, NMPM, Eddy County, New Mexico. Any potential discharge at the facility will be stored in a closed top receptacle. Groundwater most likely to be affected by a spill, leak, or accidental discharge to surface is at a depth of approximately 250 feet with a total dissolved solids concentration of approximately 3,860 mg/L. The discharge plan addresses how spills, leaks and other accidental discharges to the surface will be managed.

(GW-241) El Paso Field Services, Mr. Robert A. Price, Principal Environmental Scientist, 3300 North A Street, Building 2, Suite 200, Midland, Texas 79705, has submitted a discharge plan application renewal for their Burton Flats North Compressor Station, located in the SE/4, NW/4, Section 14, Township 20 South, Range 28 East, NMPM, Eddy County, New Mexico. Approximately 3 gallons per day of wastewater will be stored on site in a closed top tank and disposed of offsite at an OCD approved facility. Groundwater most likely to be affected by a spill, leak, or accidental discharge to surface is at a depth of approximately 26 feet with a total dissolved solids concentration ranging from 188 to 15,000 mg/L. The discharge plan addresses how spills, leaks and other accidental discharges to the surface will be managed.

Any interested person may obtain further information from the Oil Conservation Division and may submit written comments to the Director of the Oil Conservation Division at the address given above. The discharge plan application may be viewed at the above address between 8:00 a.m. and 4:00 p.m., Monday through Friday. Prior to ruling on any proposed discharge plan or its modification, the Director of the Oil Conservation Division shall allow at least thirty (30) days after the date of publication of this notice during which comments may be submitted to him and a public hearing may be requested by any interested person. Requests for a public hearing shall set forth the reasons why a hearing should be held. A hearing will be held if the Director determines there is significant public interest.

If no public hearing is held, the Director will approve or disapprove the proposed plan based on information available. If a public hearing is held, the director will approve or disapprove the proposed plan based on information in the plan and information submitted at the hearing.

GIVEN under the Seal of New Mexico Oil Conservation Commission at Santa Fe, New Mexico, on this *4th day of August 2000*.

STATE OF NEW MEXICO
OIL CONSERVATION DIVISION

S E A L

LORI WROTENBERY, Director

1220 S. St. Francis
Santa Fe, NM 87505
Phone: 505-476-3492
Fax: 505-476-3471

**New Mexico Oil
Conservation
Division**

Fax

To: Legal Notices

From: Ed Martin

Fax: 505-885-1066

Pages: 3

Phone: 505-887-5501

Date: 10/18/2001

Re:

CC: Mary Anaya (OCD), Ed Martin (OCD)

☐ **Urgent** ☐ **For Review** ☐ **Please Comment** ☐ **Please Reply** ☐ **Please Recycle**

Please publish the attached legal notice, one time only, on or before Friday, October 26, 2001.

Upon publication, please send to this office:

- 1. Publisher's affidavit.**
- 2. Invoice. Our purchase order number is 02199003489**

If you have any questions, please call me at (505) 476-3492.

Thank you.

District I
1625 N. French Dr., Hobbs, NM 88240
District II
1301 W. Grand Avenue, Artesia, NM 88210
District III
1000 Rio Brazos Road, Aztec, NM 87410
District IV
1220 S. St. Francis Dr., Santa Fe, NM 87505

State of New Mexico
Energy Minerals and Natural Resources

Oil Conservation Division
1220 South St. Francis Dr.
Santa Fe, NM 87505

Revised January 24, 2001

Submit Original
Plus 1 Copy
to Santa Fe
1 Copy to Appropriate
District Office

**DISCHARGE PLAN APPLICATION FOR SERVICE COMPANIES, GAS PLANTS,
REFINERIES, COMPRESSOR, GEOTHERMAL FACILITIES
AND CRUDE OIL PUMP STATIONS**

(Refer to the OCD Guidelines for assistance in completing the application)

☐ New ☒ Renewal ☐ Modification

1. Type: Bass James Compressor Station
2. Operator: El Paso Field Services Company
Address: 3300 North A Street, Bldg. 2, Ste 200
Contact Person: Robert A. Price Phone: (915) 686-3277
3. Location: SW /4 SE /4 Section 36 Township 22 S Range 30 E
Submit large scale topographic map showing exact location.
4. Attach the name, telephone number and address of the landowner of the facility site.
SEE ORIGINAL DP APPLICATION
5. Attach the description of the facility with a diagram indicating location of fences, pits, dikes and tanks on the facility.
SEE ORIGINAL
6. Attach a description of all materials stored or used at the facility.
SEE ORIGINAL
7. Attach a description of present sources of effluent and waste solids. Average quality and daily volume of waste water must be included.
SEE ORIGINAL
8. Attach a description of current liquid and solid waste collection/treatment/disposal procedures.
SEE ORIGINAL
9. Attach a description of proposed modifications to existing collection/treatment/disposal systems.
SEE ORIGINAL
10. Attach a routine inspection and maintenance plan to ensure permit compliance.
SEE ORIGINAL
11. Attach a contingency plan for reporting and clean-up of spills or releases.
SEE ORIGINAL
12. Attach geological/hydrological information for the facility. Depth to and quality of ground water must be included.
SEE ORIGINAL
13. Attach a facility closure plan, and other information as is necessary to demonstrate compliance with any other OCD rules, regulations and/or orders.
SEE ORIGINAL
14. CERTIFICATION: I hereby certify that the information submitted with this application is true and correct to the best of my knowledge and belief.

Name: Robert A. Price

Title: Principal Environmental Scientist

Signature: 

Date: October 1, 2001

Martin, Ed

From: Martin, Ed
Sent: Thursday, March 01, 2001 10:49 AM
To: 'David Bays'
Subject: Discharge Plans and General Info.

Just a reminder that the following facilities' discharge plans will need to be renewed this year:

GW-232 Trunk A Compressor expired 2/5/2001

GW-071-1 Ballard Hydrocarbon Recovery Unit expires 5/9/2001

GW-049-1 Kutz Recovery Unit expires 6/17/2001

GW-242 Burton Flats South Compressor expires 8/9/2001

This is a 95 hp compressor in Eddy County operated or formerly operated by Compressor Systems, Inc.

GW-241 Burton Flats North Compressor expires 8/9/2001

This is an 810 hp compressor in Eddy County operated or formerly operated by Compressor Systems, Inc.

GW-247 Whiting Compressor Station expires 9/5/2001

GW-246 Axis #2 Compressor Station expires 9/5/2001

GW-265 Texaco Bilbrey expires 11/25/2001

This is a compressor station in Lea County. Last renewal for this facility was signed by Sandra Miller.

GW-267 Bass James Compressor Station expires 12/10/2001

This is a compressor station in Eddy County. Last renewal for this facility was signed by Sandra Miller.

Also, please send me documentation as to the operational changes that will be made to improve housekeeping at the following facilities:

GW-212 Ballard Compressor Station

GW-189 Angel Peak Compressor Station

GW-186 Kutz 2 Compressor Station

GW-188-1 Hart Canyon #1 Compressor Station

GW-188 3B-1 Compressor Station

GW-188-2 Hart Canyon #2 Compressor Station

GW-188-3 Hart Canyon #3 Compressor Station



STATE OF NEW MEXICO
ENERGY, MINERALS AND NATURAL RESOURCES DEPARTMENT

OIL CONSERVATION DIVISION

2040 S. PACHECO
SANTA FE, NEW MEXICO 87505
(505) 827-7131

December 10, 1996

CERTIFIED MAIL

RETURN RECEIPT NO. P-288-258-715

Mr. Kris A. Sinclair
Engineer, Operations Compliance
El Paso Field Services (EPFS)
3300 N. A Street , Bldg. 2, Suite 206
Midland, TX 79705

**RE: Approval of Discharge Plan GW-267
Bass James Compressor Station
Eddy County, New Mexico**

Dear Mr. Sinclair:

The discharge plan GW-267 for the EPFS Bass James Compressor Station located in the SW/4 SE/4, Section 36, Township 22 South, Range 30 East, NMPM, Eddy County, New Mexico, is hereby approved under the conditions contained in the enclosed attachment. The discharge plan consists of the application dated October 14, 1996 from ESI on behalf of EPFS, and this approval letter with conditions of approval from OCD dated December 10, 1996. Enclosed are two copies of the conditions of approval. Please sign and return one copy of the permit conditions to the New Mexico Oil Conservation Division (OCD) Santa Fe Office within ten (10) working days of receipt of this letter.

The discharge plan application was submitted pursuant to Section 3106 of the New Mexico Water Quality Control Commission Regulations. Please note Sections 3109.E and 3109.F which provide for possible future amendments or modifications of the plan. Please be advised that the approval of this plan does not relieve EPFS of liability should the operations associated with this facility result in pollution of surface water, ground water, or the environment.

Please be advised that all exposed pits, including lined pits and open top tanks (tanks exceeding 16 feet in diameter), shall be screened, netted, or otherwise rendered nonhazardous to wildlife including migratory birds.

Mr. Kris Sinclair
EPFS GW-267
December 10, 1996
Page 2

Please note that Section 3104 of the regulations requires that "When a plan has been approved, discharges must be consistent with the terms and conditions of the plan." Pursuant to Section 3107.C EPFS is required to notify the Director of any facility expansion, production increase, or process modification that would result in any change in the discharge of water quality or volume.

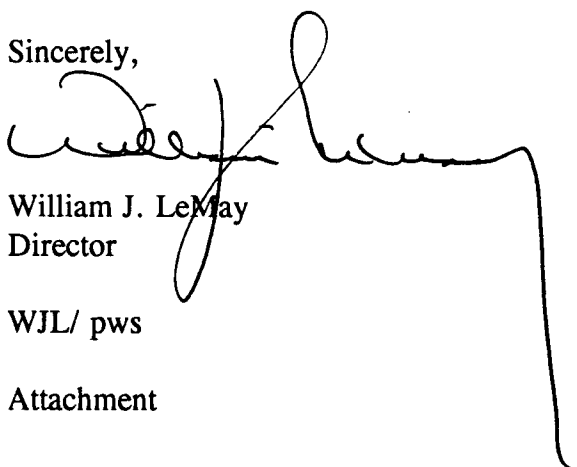
Pursuant to Section 3109.G.4, this plan is for a period of five (5) years. **This approval will expire December 10, 2001, and an application for renewal should be submitted in ample time before that date.** It should be noted that all discharge plan facilities will be required to submit plans for, or the results of, an underground drainage testing program as a requirement for discharge plan approval.

The discharge plan for the EPFS Bass James Compressor Station GW-267 is subject to the WQCC Regulation 3114 discharge plan fee. Every billable facility submitting a discharge plan will be assessed a fee equal to the filing fee of fifty dollars (\$50). Note, there is no flat fee for this facility since the horsepower is less than 1,000.

The \$50 filing fee has been received by the OCD.

On behalf of the staff of the Oil Conservation Division, I wish to thank you and your staff for your cooperation during this discharge plan review.

Sincerely,


William J. LeMay
Director

WJL/ pws

Attachment

xc: Artesia OCD District Office

P 288 258 715

US Postal Service
Receipt for Certified Mail
No Insurance Coverage Provided.
Do not use for International Mail (See reverse)

Sent to EPFS - Mr. Sinclair	
Street & Number GW-267 Approval.	
Post Office, State, & ZIP Code	
Postage	\$
Certified Fee	
Special Delivery Fee	
Restricted Delivery Fee	
Return Receipt Showing to Whom & Date Delivered	
Return Receipt Showing to Whom, Date, & Addressee's Address	
TOTAL Postage & Fees	\$
Postmark or Date	

PS Form 3800, April 1995

Mr. Kris Sinclair
EPFS GW-267
December 10, 1996
Page 3

ATTACHMENT TO DISCHARGE PLAN GW-267
Permit Conditions
EPFS - Bass James Compressor Station
DISCHARGE PLAN REQUIREMENTS
(December 10, 1996)

1. **Payment of Discharge Plan Fees:** The \$50 filing fee has been received by the OCD, and there is no flat fee for this facility since the horsepower is less than 1,000.
2. **EPFS Commitments:** EPFS will abide by all commitments submitted in the application dated October 14, 1996 from ESI on behalf of EPFS, and this approval letter with conditions of approval from OCD dated December 10, 1996.
3. **Drum Storage:** All drums containing materials other than fresh water must be stored on an impermeable pad and curb type containment. All empty drums should be stored on their sides with the bungs in place and lined up on a horizontal plane. Chemicals in other containers such as sacks or buckets should also be stored on an impermeable pad and curb type containment.

All drums and chemical containers shall be clearly labeled to identify their contents and other emergency information necessary if they were to rupture, spill, or ignite.
4. **Process Areas:** All process and maintenance areas which show evidence that leaks and spills are reaching the ground surface must be either paved and curbed or have some type of spill collection device incorporated into the design.
5. **Above Ground Tanks:** All above ground tanks which contain fluids other than fresh water must be bermed to contain a volume of one-third more than the total volume of the largest tank or of all interconnected tanks. All new facilities or modifications to existing facilities must place the tank on an impermeable type pad.
6. **Above Ground Saddle Tanks:** Above ground saddle tanks must have impermeable pad and curb type containment unless they contain fresh water or fluids that are gases at atmospheric temperature and pressure.
7. **Tank Labeling:** All tanks should be clearly labeled to identify their contents and other emergency information necessary if the tank were to rupture, spill, or ignite.
8. **Below Grade Tanks/Sumps:** All below grade tanks, sumps, and pits must be approved by the OCD prior to installation or upon modification and must incorporate secondary containment and leak-detection into the design. All pre-existing sumps and below-grade tanks that do not have secondary containment and leak detection must demonstrate integrity on an annual basis. Integrity tests include pressure testing to 3 pounds per square inch above normal operating pressure and/or visual inspection of cleaned out tanks /or sumps.

Mr. Kris Sinclair
EPFS GW-267
December 10, 1996
Page 4

9. **Underground Process/Wastewater Lines:** All underground process/wastewater pipelines must be tested to demonstrate their mechanical integrity at present and then every 5 years there after. Companies may propose various methods for testing such as pressure testing to 3 pounds per square inch above normal operating pressure or other means acceptable to the OCD. The OCD will be notified at least 72 hours prior to all testing so that an OCD representative may witness the testing.

10. **Housekeeping:** All systems designed for spill collection/prevention should be inspected to ensure proper operation and to prevent overtopping or system failure.

Any soils contaminated with a non-exempt waste at the facility will be tested for hazardous constituents, and after receiving OCD approval, will be disposed of at an OCD approved site.

11. **Spill Reporting:** All spills/releases shall be reported pursuant to OCD Rule 116 and WQCC 1203 to the Artesia OCD District Office at (505)-748-1283.

12. **Transfer of Discharge Plan:** The OCD will be notified prior to any transfer of ownership, control, or possession of a facility with an approved discharge plan. A written commitment to comply with the terms and conditions of the previously approved discharge plan must be submitted by the purchaser and approved by the OCD prior to transfer.

13. **Closure:** The OCD will be notified when operations of the facility are discontinued for a period in excess of six months. Prior to closure of the facility a closure plan will be submitted for approval by the director. Closure and waste disposal will be in accordance with the statutes, rules and regulations in effect at the time of closure.

14. **Certification:** EPFS, by the officer whose signature appears below, accepts this permit and agrees to comply with all terms and conditions contained herein. EPFS, further acknowledges that these conditions and requirements of this permit may be changed administratively by the Division for good cause shown as necessary to protect groundwater, human health and the environment.

Accepted:

El Paso Field Services

by _____
Title

ACKNOWLEDGEMENT OF RECEIPT
OF CHECK/CASH

I hereby acknowledge receipt of check No. 4339 dated 10/14/96

or cash received on _____ in the amount of \$ 50.00

from Environmental Services for CST

for Boss James C.S. 642-267

Submitted by: _____ Date: _____

Submitted to ASD by: R. Anderson Date: 12/11/96

Received in ASD by: _____ Date: _____

Filing Fee ☒ New Facility _____ Renewal _____

Modification _____ Other _____

Organization Code 521.07 Applicable FY 97

To be deposited in the Water Quality Management Fund.

Full Payment _____ or Annual Increment _____

ENVIRONMENTAL SERVICES, INC.		4339
4665 INDIAN SCHOOL RD. NE, STE. 106 PH. 266-6611		
ALBUQUERQUE, NM 87110		
DATE	<u>10/14/96</u>	95-32/1070 0109676338
PAY TO THE ORDER OF	<u>New Mexico Water Quality Management Fund</u>	\$ <u>50.00</u>
<u>Fifty and no/100</u>		DOLLARS
SUNWEST		
SUNWEST BANK OF ALBUQUERQUE, N.A. ALBUQUERQUE, NEW MEXICO 87125-0500 (505) 765-2600		
MEMO	<u>CS1009-Discharge plan</u>	<u>Sally Turley</u>
⑆107000327⑆01 0967633 8⑆4339		



United States Department of the Interior

FISH AND WILDLIFE SERVICE

New Mexico Ecological Services Field Office
2105 Osuna NE

Albuquerque, New Mexico 87113
Phone: (505) 761-4525 Fax: (505) 761-4542

November 15, 1996

RECEIVED

NOV 20 1996

Environmental Bureau
Oil Conservation Division

William J. Lemay, Director
Oil Conservation Division
2040 South Pacheco
Sante Fe, New Mexico 87505

Dear Mr. Lemay:

This responds to your agency's public notices dated October 18 and October 29, 1996, regarding the discharge plan applications and renewals for the five applicants described below:

(GW-093) - Burlington Resources. Mr. Craig Bock has submitted an application for renewal of the company's approved discharge plan for the Rattlesnake Compressor Station located in Section 10, Township 31 North, Range 7 West, San Juan County, New Mexico. Approximately 450 gallons per day of washdown water and produced water will be stored in above ground steel tanks prior to transport to an OCD approved disposal facility.

(GW-088) - Amoco Production Facility. Mr. Buddy Shaw has submitted an application for renewal of the company's approved discharge plan for the Gallegos Canyon Compressor Station located in Section 21, Township 29 North, Range 12 West, San Juan County, New Mexico. Approximately 2,800 gallons per day of wastewater water will be stored in above ground steel tanks prior to transport to an OCD approved disposal facility.

(GW-267) - El Paso Field Services. Ms. Sandra Miller has submitted a Discharge Plan Application for the company's Bass James Compressor Station located in Section 36, Township 22 South, Range 30 East, Eddy County, New Mexico. Potential discharges at the facility will be stored in a closed top receptacle.

(GW-090) - Transwestern Pipeline Company. Mr. Larry Campbell has submitted an application for renewal of the company's approved discharge plan for the Portales Compressor Station located in Section 16, Township 1 South, Range 34 East, Roosevelt County, New Mexico. Potential discharges at the facility will be stored in a closed top receptacle.

(GW-091) - Williams Field Services. Ms. Leigh Gooding has submitted an application for renewal of the company's approved discharge plan for the 32-9 CDP Compressor Station located in Section 15, Township 31 North, Range 10 West, San Juan County, New Mexico. Potential discharges at the facility will be stored in

RECEIVED

NOV 20 1996

William J. Lemay

Environmental Bureau
Oil Conservation Division

2

a closed top receptacle.

The U.S. Fish and Wildlife Service (Service) has no objection to the Oil Conservation Division approving discharge plans GW-267, GW-090, and GW-091, which utilize closed top receptacles or tanks, as the closed tops prevent migratory bird and other wildlife direct access to potentially toxic chemicals.

We also recommend the use of berms or some other spill containment methodology around the storage receptacles and tanks for the operations above to help prevent migration of contaminated waters into the surface waters of New Mexico during any accidental rupture or spill.

On April 20, 1994, portions of the San Juan River in San Juan County, New Mexico, were designated as critical habitat for the federally-listed endangered Colorado squawfish and razorback sucker. The critical habitat for the Colorado squawfish is the reach of the San Juan River from the Highway 371 Bridge (in Farmington) to Neskahai Canyon on the San Juan Arm of Lake Powell in Utah. Critical habitat for the razorback sucker includes the reach of the San Juan River from the Hogback Diversion (west of Waterflow, New Mexico) to Neskahai Canyon.

Due to considerations for protection of critical habitat for the Colorado squawfish and the razorback sucker, as well as to individuals or populations of squawfish that may be located upstream from the critical habitat boundary, we urge you to ensure that discharge plans GW-093, GW-088, and GW-091 contain adequate provisions (such as spill containment berms) to ensure the protection of these endangered fish. In the event of a release of pollutants into the San Juan River, or of pollutants which eventually reach the San Juan River, the Service and/or the New Mexico Department of Game and Fish should be notified immediately.

We request that you provide applicants receiving discharge plan approvals for facilities near the San Juan River in San Juan County with the following emergency notification information:

U.S. Fish and Wildlife Service
New Mexico Ecological Services Field Office
2105 Osuna NE
Albuquerque, NM 87113
Telephone (505) 761-4525
Fax (505) 761-4542

New Mexico Department of Game & Fish
Villagra Building
P.O. Box 25112
Santa Fe, NM 87504
Telephone (505) 827-7882
Fax (505) 827-7801

For discharge plans GW-093 and GW-088, the Service recommends the use of excluding technology (e.g., nets, fences, enclosed tanks, etc.) to prevent migratory bird and other wildlife access to any open top receptacles or tanks for produced waters or wastewater which may contain toxic chemicals, or which may harbor a surface oil sheen. During flight, migratory birds may not distinguish between a storage tank and a natural waterbody: the open-top artificial waterbody may serve as an "attractive nuisance" if measures are not taken to exclude migratory birds from access. Alternatively, the applicants or the Oil

Conservation Division may elect to demonstrate that the retained waters are "bird-safe" (e.g., can meet New Mexico general water quality standards 1102.B, 1102.F, and 3101.K or 3101.L).

Our intent is to inform and intercede before any migratory bird deaths occur, since these birds constitute a legally protected resource. Under the Migratory Bird Treaty Act (MBTA), the courts have held that an operator of produced water or other wastewater storage facilities may be held liable for an "illegal take" of migratory birds. An "illegal take" has been interpreted to include accidental poisoning or accumulation of harmful concentrations of contaminants by migratory birds, which might occur as a result of access to the stored fluids. Hydrocarbon pollutants, for instance, can be carried to the nest on breast feathers, feet, or in nesting materials, where the eggs can subsequently become contaminated, leading to embryo death and reduced hatchability. If the construction or operation of open top storage structures results in migratory bird deaths and the problem is not addressed, the operator may be held liable under the enforcement provisions of the MBTA.

Although the comments we have provided in this letter are primarily designed to safeguard migratory birds and threatened and endangered species, incorporation of our recommendations in these discharge plans would also tend to be protective of other wildlife which may reside at or visit the disposal sites. We encourage your agency to solicit additional comments from the New Mexico Department of Game and Fish to assist in the protection wildlife.

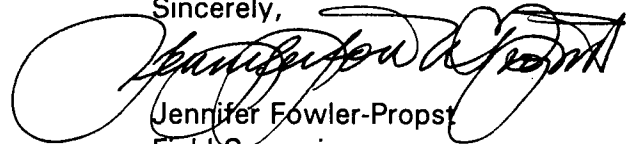
Thank you for the opportunity to review and comment on these discharge plan applications. If you have any question about these comments, please call Dennis W. Byrnes at (505) 761-4525.

RECEIVED

NOV 20 1996

Environmental Bureau
Oil Conservation Division

Sincerely,



Jennifer Fowler-Propst
Field Supervisor

cc:

Director, New Mexico Department of Game and Fish, Santa Fe, New Mexico
Geographic Manager, New Mexico Ecosystems, U.S. Fish and Wildlife Service,
Albuquerque, New Mexico
Migratory Bird Office, U.S. Fish and Wildlife Service, Albuquerque, New Mexico

AFFIDAVIT OF PUBLICATION

No. 37088

STATE OF NEW MEXICO

County of San Juan:

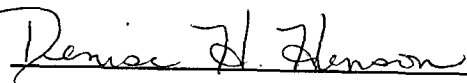
ROBERT LOVETT being duly sworn says: That he is the Classified Manager of THE DAILY TIMES, a daily newspaper of general circulation published in English at Farmington, said county and state, and that the hereto attached Legal Notice was published in a regular and entire issue of the said DAILY TIMES, a daily newspaper duly qualified for the purpose within the meaning of Chapter 167 of the 1937 Session Laws of the State of New Mexico for publication on the following day(s):

Wednesday, November 6, 1996;

and the cost of publication is: \$85.17.



On 11/6/96 ROBERT LOVETT appeared before me, whom I know personally to be the person who signed the above document.



My Commission Expires May 17, 2000

RECEIVED

NOV 18 1996

Environmental Bureau
Oil Conservation Division

COPY OF PUBLICATION

Legals

NOTICE OF PUBLICATION

STATE OF NEW MEXICO ENERGY, MINERALS AND NATURAL RESOURCES DEPARTMENT OIL CONSERVATION DIVISION

Notice is hereby given that pursuant to New Mexico Water Quality Control Commission Regulations, the following discharge plan application and renewal applications have been submitted to the Director of the Oil Conservation Division, 2040 South Pacheco, Santa Fe, New Mexico 87505, Telephone (505) 827-7131:

(GW-267) - El Paso Field Services, Ms. Sandra Miller, (505) 599-2141, P.O. Box 4990, Farmington, New Mexico 87499, has submitted a Discharge Plan Application for their "Bass James" compressor station located in the SW/4 SE/4, Section 36, Township 22 South, Range 30 East, NMPM, Eddy County, New Mexico. Any potential discharge at the facility will be stored in a closed top receptacle. Groundwater most likely to be affected by a spill, leak, or accidental discharge to the surface is at a depth of approximately 250 feet with a total dissolved solids concentration of approximately 3,860 mg/L. The discharge plan addresses how spills, leaks, and other accidental discharges to the surface will be managed.

(GW-90) - Transwestern Pipeline Company, Mr. Larry Campbell, (505)-625-8022, 6381 N. Main Street, Roswell, NM, 88201, has submitted a Discharge Plan Renewal Application for their "Portales" compressor station located in the NW/4 NW/4 of Section 16, Township 1 South, Range 34 East, NMPM, Roosevelt County, New Mexico. Any potential discharge at the facility will be stored in a closed top receptacle. Groundwater most likely to be affected by a spill, leak, or accidental discharge to the surface is at a depth of approximately 64 feet with a total dissolved solids concentration of approximately 1,500 mg/L. The discharge plan addresses how spills, leaks, and other accidental discharges to the surface will be managed.

(GW-91) - Williams Field Services, Ms. Leigh Gooding, (801)-584-6543, 295 Chipeta Way, Salt Lake City, UT, 84158, has submitted a Discharge Plan Renewal Application for their "32-9 CDP" compressor station located in the NE/4 SE/4, Section 15, Township 31 North, Range 10 West, NMPM, San Juan County, New Mexico. Any potential discharge at the facility will be stored in a closed top receptacle. Groundwater most likely to be affected by a spill, leak, or accidental discharge to the surface is at a depth of approximately 500 feet with a total dissolved solids concentration of approximately 300 mg/L. The discharge plan addresses how spills, leaks, and other accidental discharges to the surface will be managed.

Any interested person may obtain further information from the Oil Conservation Division and may submit written comments to the Director of the Oil Conservation Division at the address given above. The discharge plan applications may be viewed at the above address between 8:00 a.m. and 4:00 p.m., Monday through Friday. Prior to ruling on any proposed discharge plan or its modification, the Director of the Oil Conservation Division shall allow at least thirty (30) days after the date of publication of this notice during which comments may be submitted to him and a public hearing may be requested by any interested person. Requests for a public hearing shall set forth the reasons why a hearing should be held. A hearing will be held if the Director determines there is significant public interest.

If no public hearing is held, the Director will approve or disapprove the proposed plan based on information available. If a public hearing is held, the Director will approve or disapprove the proposed plan based on the information in the discharge plan application and information submitted at the hearing.

GIVEN under the Seal of New Mexico Oil Conservation Commission at Santa Fe, New Mexico on this 29th day of October, 1996.

SEAL

STATE OF NEW MEXICO
OIL CONSERVATION DIVISION

/s/William J. LeMay
WILLIAM J. LEMAY, Director

Legal No. 37088 published in The Daily Times, Farmington, New Mexico on Wednesday, November 6, 1996.

Affidavit of Publication

No 17340

State of New Mexico,
County of Eddy, ss.

Amy McKay

being first duly sworn, on oath says:

That she is Business Manager
of the Carlsbad Current-Argus, a newspaper published daily at the City of Carlsbad, in said county of Eddy, state of New Mexico and of general paid circulation in said county; that the same is a duly qualified newspaper under the laws of the state wherein legal notices and advertisements may be published; that the printed notice attached hereto was published in the regular and entire edition of said newspaper and not in supplement thereof on the date as follows, to wit:

November 6, 1996
_____, 19____
_____, 19____
_____, 19____
_____, 19____
_____, 19____
_____, 19____

That the cost of publication is \$ 67.11,
and that payment thereof has been made and will
be assessed as court costs.

Amy McKay

Subscribed and sworn to before me this

11th day of November, 1996

Ronna Crump

My commission expires 08/01/98

Notary Public

RECEIVED

NOV 15 1996

Environmental Bureau
Oil Conservation Division

November 6, 1996

NOTICE OF PUBLICATION

STATE OF NEW MEXICO
ENERGY, MINERALS AND
NATURAL RESOURCES

DEPARTMENT OIL
CONSERVATION DIVISION

Notice is hereby given that pursuant to New Mexico Water Quality Control Commission Regulations, the following discharge plan application and renewal applications have been submitted to the Director of the Oil Conservation Division, 2040 South Pacheco, Santa Fe, New Mexico 87505, Telephone (505) 827-7131:

(GW-267) - El Paso Field Services, Ms. Sandra Miller, (505)-599-2141, P.O. Box 4990, Farmington, NM 87499, has submitted a Discharge Plan Application for their "Bass James" compressor station located in the SW/4 SE/4, Section 36, Township 22 South, Range 30 East, NMPM, Eddy County, New Mexico. Any potential discharge at the facility will be stored in a closed top receptacle. Groundwater most likely to be affected by a spill, leak, or accidental discharge to the surface is at a depth of approximately 250 feet with a total dissolved solids concentration of approximately 3,860 mg/L. The discharge plan addresses how spills, leaks, and other accidental discharges to the surface will be managed.

(GW-90) - Transwestern Pipeline Company, Mr. Larry Campbell, (505)-625-8022, 6381 N. Main Street, Roswell, NM, 88201, has submitted a Discharge Plan Renewal Application for their "Portales" compressor station located in the NW/4 NW/4, Section 16, Township 1 South, Range 34 East, NMPM, Roosevelt County, New Mexico. Any potential discharge at the facility will be stored in a closed top receptacle. Groundwater most likely to be affected by a spill, leak, or accidental discharge to the surface is at a depth of approximately 64 feet with a total dissolved solids concentration of approximately 1,500 mg/L. The discharge plan addresses how spills, leaks, and other accidental discharges to the surface will be managed.

(GW-81) - William Field Services, Ms. Leigh Gooding, (801)-684-6543, 295 Chipeta Way, Salt Lake City, UT, 84158, has submitted a Discharge Plan Renewal Application for their "32-9 CDP" compressor station located in the NE/4 SE/4, Section 15, Township 31 North, Range 10 West, NMPM, San Juan County, New Mexico. Any potential discharge at the facility will be stored in a closed top receptacle. Groundwater most likely to be affected a spill, leak, or accidental discharge to the surface is at a depth of approximately 500 with a total dissolved solids concentration of approximately 300 mg/L. The discharge plan addresses how spills, leaks, and other accidental discharges to the surface will be managed.

Any interested person may obtain further information from the Oil Conservation Division

and may submit written comments to the Director of the Oil Conservation Division at the address given above. The discharge plan applications may be viewed at the above address between 8:00 a.m. and 4:00 p.m., Monday through Friday. Prior to ruling on any proposed discharge plan or its modification, the Director of the Oil Conservation Division shall allow at least thirty (30) days after the date of publication of this notice during which comments may be submitted to him and a public hearing may be requested by any interested person. Requests for a public hearing shall set forth the reasons why a hearing should be held. A hearing will be held if the Director determines there is significant public interest.

If no public hearing is held, the Director will approve or disapprove the proposed plan based on information available. If a public hearing is held, the director will approve or disapprove the proposed plan based on information in the discharge plan application and information submitted at the hearing.

GIVEN under the Seal of New Mexico Oil Conservation Commission at Santa Fe, New Mexico, on this 29th day of October, 1996.

STATE OF NEW MEXICO
OIL CONSERVATION
DIVISION

WILLIAM J. LEMAY, Director



STATE OF NEW MEXICO
ENERGY, MINERALS AND NATURAL RESOURCES DEPARTMENT

OIL CONSERVATION DIVISION
2040 S. PACHECO
SANTA FE, NEW MEXICO 87505
(505) 827-7131

November 13, 1996

CERTIFIED MAIL
RETURN RECEIPT NO. P-288-258-683

Mr. Kris A. Sinclair
Engineer, Operations Compliance
El Paso Field Services (EPFS)
3300 N. "A", Bldg. 2, Suite 206
Midland, TX 79705

RE: Extension to Discharge
"Bass James" Compressor Station
Lea County, New Mexico

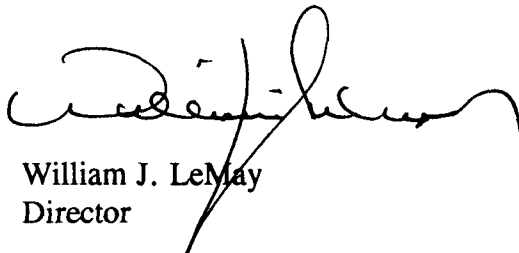
Dear Mr. Sinclair:

The New Mexico Oil Conservation Division has received the request (via Fax - with certified hard copy letter to follow) dated November 12, 1996 from EPFS for an extension to discharge without an approved discharge plan for 120 days.

Pursuant to Water Quality Control Commission (WQCC) Regulations 3106.B, and for good cause shown, an extension to March 9, 1997 to discharge without an approved discharge plan for the EPFS facility located in the SW/4 SE/4, Section 36, Township 22 South, Range 30 East, NMPM, Lea County, New Mexico is hereby approved.

Please be advised this extension does not relieve EPFS of liability should the operation of the facility result in pollution of surface waters, ground waters or the environment.

Sincerely,



William J. LeMay
Director

WJL/pws

xc: Mr. Wayne Price - OCD Hobbs

P 288 258 683

US Postal Service	
Receipt for Certified Mail	
No Insurance Coverage Provided.	
Do not use for International Mail (See reverse)	
Sent to EPFS GW267-Mr. Sinclair	
Street & Number 120 DAY EXT. PWS	Post Office, State, & ZIP Code
Postage	\$
Certified Fee	
Special Delivery Fee	
Restricted Delivery Fee	
Return Receipt Showing to Whom & Date Delivered	
Return Receipt Showing to Whom, Date, & Addressee's Address	
TOTAL Postage & Fees	\$
Postmark or Date	

PS Form 3800, April 1995

November 12, 1996

RECEIVED

NOV 15 1996

Environmental Bureau
Oil Conservation Division

Mr. William J. LeMay
Oil Conservation Division
P.O. Box 6429
Santa Fe, NM 87505-6429

Dear Mr. LeMay,

El Paso Field Services (EPFS) requests authorization under section 3-106B. of the New Mexico Water Quality Control Commission (WQCC) regulations to discharge without an approved discharge plan at the following facility. This facility will be constructed by Compressor Systems, Inc. (CSI) located on the producer's existing well pad.

Bass James Facility, Eddy County, NM
Township 22 South, Range 30 East, SW/4 SE/4 Sec. 36

Please feel free to contact me at (915) 686-3279 if you have any questions or need clarification.

Sincerely,



Kris A. Sinclair
Engineer, Operations Compliance

xc: J. C. Bishop
M. E. Tschirhart
S. D. Miller



3300 N. "A", Bldg 2, Suite 206
Midland, Texas 79705

RECEIVED

NOV 13 1996

Environmental Bureau
Oil Conservation Division

FAX COVER SHEET

DATE: 11/12/96

TIME: _____

TO: Pat Sanchez

PHONE: _____

FAX: (915) 827-8177FROM: Kris SinclairPHONE: (915) 686-3279

FAX: (915) 686-3292

RE: Base James Facility

CC: _____

Number of pages including cover sheet: 2

Message



November 12, 1996

RECEIVED

NOV 13 1996

Mr. William J. LeMay
Oil Conservation Division
P.O. Box 6429
Santa Fe, NM 87505-6429

Environmental Bureau
Oil Conservation Division

Dear Mr. LeMay,

El Paso Field Services (EPFS) requests authorization under section 3-106B. of the New Mexico Water Quality Control Commission (WQCC) regulations to discharge without an approved discharge plan at the following facility. This facility will be constructed by Compressor Systems, Inc. (CSI) located on the producer's existing well pad.

Bass James Facility, Eddy County, NM
Township 22 South, Range 30 East, SW/4 SE/4 Sec. 36

Please feel free to contact me at (915) 686-3279 if you have any questions or need clarification.

Sincerely,

A handwritten signature in cursive script that reads 'Kris A. Sinclair'.

Kris A. Sinclair
Engineer, Operations Compliance

xc: J. C. Bishop
M. E. Tschirhart
S. D. Miller

118.52
The Santa Fe New Mexican

Since 1849. We Read You.

NM OIL CONSERVATION
ATTN: SALLY MARTINEZ
2040 S. PACHECO
SANTA FE, NM 87505

AD NUMBER: 575051

ACCOUNT: 56689

LEGAL NO: 60691

P.O. #: 96-199-002997

255 LINES once at \$ 102.00

Affidavits: 5.25

Tax: 6.70

Total: \$ 113.95

RECEIVED

NOV 07 1996

Environmental Bureau
Oil Conservation Division

AFFIDAVIT OF PUBLICATION

okay DWZ
11-8-96

STATE OF NEW MEXICO
COUNTY OF SANTA FE

I, BETSY PERNER being first duly sworn declare and say that I am Legal Advertising Representative of THE SANTA FE NEW MEXICAN, a daily news paper published in the English language, and having a general circulation in the Counties of Santa Fe and Los Alamos, State of New Mexico and being a Newspaper duly qualified to publish legal notices and advertisements under the provisions of Chapter 167 on Session Laws of 1937; that the publication # 60691 a copy of which is hereto attached was published in said newspaper once each week for one consecutive week(s) and that the notice was published in the newspaper proper and not in any supplement; the first publication being on the 4 day of November 1996 and that the undersigned has personal knowledge of the matter and things set forth in this affidavit.

/S/

Betsy Perner
LEGAL ADVERTISEMENT REPRESENTATIVE

Subscribed and sworn to before me on this
4 day of November A.D., 1996



OFFICIAL SEAL

Candace C. Ruiz

NOTARY PUBLIC - STATE OF NEW MEXICO

My Commission Expires: 9/29/99

202 East Marcy Street • P.O. Box 2048 • Santa Fe, New Mexico 87501

505-983-3303 • (FAX) 505-984-1785

NOTICE OF PUBLICATION

STATE OF NEW MEXICO

**ENERGY, MINERALS
AND NATURAL
RESOURCES
DEPARTMENT**

**OIL CONSERVATION
DIVISION**

Notice is hereby given that pursuant to New Mexico Water Quality Control Commission Regulations, the following discharge plan application and renewal applications have been submitted to the Director of the Oil Conservation Division, 2040 South Pacheco, Santa Fe, New Mexico, 87505, Telephone (505) 827-7131:

(GW-267) - El Paso Field Services, Ms. Sandra Miller, (505)-599-2141, P.O. Box 4990, Farmington, NM, 87499, has submitted a Discharge Plan Application for their "Bass James" compressor station located in the SW/4 SE/4, Section 36, Township 22 South, Range 30 East, NMPM, Eddy County, New Mexico. Any potential discharge at the facility will be stored in a closed top receptacle. Groundwater most likely to be affected by a spill, leak, or accidental discharge to the surface is at a depth of approximately 250 feet with a total dissolved solids concentration of approximately 3,860 mg/L. The discharge plan addresses how spills, leaks, and other accidental discharges to the surface will be managed.

(GW-90) - Transwestern Pipeline Company, Mr. Larry Campbell, (505)-625-0022, 6381 N. Main Street, Roswell, NM, 88201, has submitted a Discharge Plan Renewal Application for their "Portales" compressor station located in the NW/4 NW/4, Section 16, Township 1 South, Range 34 East, NMPM, Roosevelt County, New Mexico. Any potential discharge at the facility will be stored in a closed top receptacle. Groundwater most likely to be affected by a spill, leak, or accidental discharge to the surface is at a depth of approximately 64 feet with a total dissolved solids concentration of approximately 1,500 mg/L. The discharge plan addresses how spills, leaks, and other accidental discharges to the surface will be managed.

(GW-91) - Williams Field Services, Ms. Leigh Cooding, (801)-584-6543, 295 Chipeta

Way, Salt Lake City, UT, 84150, has submitted a Discharge Plan Renewal Application for their "32-9 CDP" compressor station located in the NE/4 SE/4, Section 15, Township 31 North, Range 10 West, NMPM, San Juan County, New Mexico. Any potential discharge at the facility will be stored in a closed top receptacle. Groundwater most likely to be affected by a spill, leak, or accidental discharge to the surface is at a depth of approximately 500 feet with a total dissolved solids concentration of approximately 300 mg/L. The discharge plan addresses how spills, leaks, and other accidental discharges to the surface will be managed.

Any interested person may obtain further information from the Oil Conservation Division and may submit written comments to the Director of the Oil Conservation Division at the address given above. The discharge plan applications may be viewed at the above address between 8:00 a.m. and 4:00 p.m., Monday through Friday. Prior to ruling on any proposed discharge plan or its modifications, the Director of the Oil Conservation Division shall allow at least thirty (30) days after the date of publication of this notice during which comments may be submitted to him and a public hearing may be requested by any interested person. Requests for a public hearing shall set forth the reasons why a hearing should be held. A hearing will be held if the Director determines there is significant public interest.

If no public hearing is held, the Director will approve or disapprove the proposed plans based on information available. If a public hearing is held, the director will approve or disapprove the proposed plans based on the information in the discharge plan renewal applications and information submitted at the hearing.

GIVEN under the Seal of New Mexico Oil Conservation Commission at Santa Fe, New Mexico, on this 29th day of October 1996.

STATE OF NEW MEXICO
OIL CONSERVATION
DIVISION
WILLIAM J. LEMAY,
Director
Legal #60691
Pub. November 4, 1996

RECEIVED

NOV 07 1996

Environmental Bureau
Oil Conservation Division

NOTICE OF PUBLICATION

STATE OF NEW MEXICO ENERGY, MINERALS AND NATURAL RESOURCES DEPARTMENT OIL CONSERVATION DIVISION

Notice is hereby given that pursuant to New Mexico Water Quality Control Commission Regulations, the following discharge plan application and renewal applications have been submitted to the Director of the Oil Conservation Division, 2040 South Pacheco, Santa Fe, New Mexico 87505, Telephone (505) 827-7131:

(GW-267) - El Paso Field Services, Ms. Sandra Miller, (505)-599-2141, P.O. Box 4990, Farmington, NM, 87499, has submitted a Discharge Plan Application for their "Bass James" compressor station located in the SW/4 SE/4, Section 36, Township 22 South, Range 30 East, NMPM, Eddy County, New Mexico. Any potential discharge at the facility will be stored in a closed top receptacle. Groundwater most likely to be affected by a spill, leak, or accidental discharge to the surface is at a depth of approximately 250 feet with a total dissolved solids concentration of approximately 3,860 mg/L. The discharge plan addresses how spills, leaks, and other accidental discharges to the surface will be managed.

(GW-90) - Transwestern Pipeline Company, Mr. Larry Campbell, (505)-625-8022, 6381 N. Main Street, Roswell, NM, 88201, has submitted a Discharge Plan Renewal Application for their "Portales" compressor station located in the NW/4 NW/4, Section 16, Township 1 South, Range 34 East, NMPM, Roosevelt County, New Mexico. Any potential discharge at the facility will be stored in a closed top receptacle. Groundwater most likely to be affected by a spill, leak, or accidental discharge to the surface is at a depth of approximately 64 feet with a total dissolved solids concentration of approximately 1,500 mg/L. The discharge plan addresses how spills, leaks, and other accidental discharges to the surface will be managed.

(GW-91) - Williams Field Services, Ms. Leigh Gooding, (801)-584-6543, 295 Chipeta Way, Salt Lake City, UT, 84158, has submitted a Discharge Plan Renewal Application for their "32-9 CDP" compressor station located in the NE/4 SE/4, Section 15, Township 31 North, Range 10 West, NMPM, San Juan County, New Mexico. Any potential discharge at the facility will be stored in a closed top receptacle. Groundwater most likely to be affected by a spill, leak, or accidental discharge to the surface is at a depth of approximately 500 feet with a total dissolved solids concentration of approximately 300 mg/L. The discharge plan addresses how spills, leaks, and other accidental discharges to the surface will be managed.

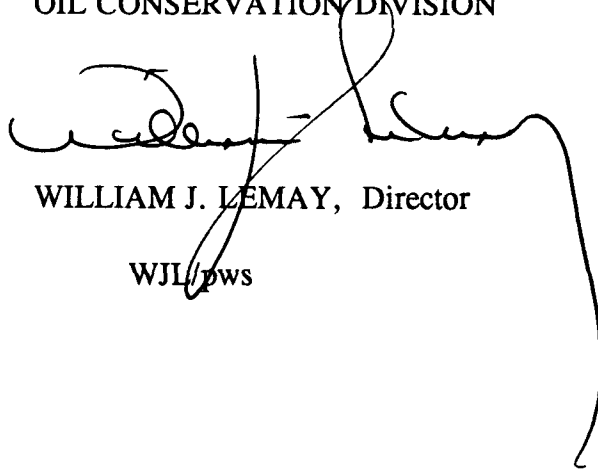
Any interested person may obtain further information from the Oil Conservation Division and may submit written comments to the Director of the Oil Conservation Division at the address given above. The discharge plan applications may be viewed at the above address between 8:00 a.m. and 4:00 p.m., Monday through Friday. Prior to ruling on any proposed discharge plan or its modification, the Director of the Oil Conservation Division shall allow at least thirty (30) days after the date of publication of this notice during which comments may be submitted to him and

a public hearing may be requested by any interested person. Requests for a public hearing shall set forth the reasons why a hearing should be held. A hearing will be held if the Director determines there is significant public interest.

If no public hearing is held, the Director will approve or disapprove the proposed plan based on information available. If a public hearing is held, the director will approve or disapprove the proposed plan based on information in the discharge plan application and information submitted at the hearing.

GIVEN under the Seal of New Mexico Oil Conservation Commission at Santa Fe, New Mexico, on this 29th day of October, 1996.

STATE OF NEW MEXICO
OIL CONSERVATION DIVISION

A large, stylized handwritten signature in black ink, likely belonging to William J. Lemay, is written over the typed name and extends downwards.

WILLIAM J. LEMAY, Director

WJL/pws

S E A L



October 14, 1996

RECEIVED

OCT 23 1996

Environmental Bureau
Oil Conservation Division

GW-267

Roger Anderson, Bureau Chief
Oil Conservation Division
2040 South Pacheco Street
Santa Fe, NM 87505

Subject: Discharge Plan Application, Bass James Facility, Eddy County, NM

Dear Mr. Anderson

On behalf of our client, Compressor Systems, Inc. (CSI), I am enclosing two copies of a discharge plan application for the Bass James facility located on a Bass Enterprises well pad. Please note that this facility will be constructed, owned, and operated under contract by CSI.

The \$50 application fee is also enclosed. If you have any questions, please don't hesitate to contact me or Terry Christian at (915) 563-1170.

Sincerely

Robin K. DeLapp

Robin K. DeLapp
Environmental Scientist

cc: Terry Christian, CSI
Sandra Miller, EPFS
Jim Bishop, EPFS
Tim Gum, OCD Artesia

4665 INDIAN SCHOOL NE

SUITE 106

ALBUQUERQUE

NEW MEXICO

87110

PHO 505 266 6611

^{GW-267}
Application for Groundwater Discharge Plan

Bass James Facility

prepared for

**Compressor Systems, Inc.
October 1996**

P. O. BOX 1980
Hobbs, NM 88241-1980
District II - (505) 748-1283
811 S. First
Artesia, NM 88210
District III - (505) 334-6178
1000 Rio Brazos Road
Aztec, NM 87410
District IV - (505) 827-7131

Energy Minerals and Natural Resources Department
Oil Conservation Division
2040 South Pacheco Street
Santa Fe, New Mexico 87505
(505) 827-7131

Revised 12/1/9

Submit Origin:
Plus 1 Copy
to Santa Fe
1 Copy to appropriate
District Office

DISCHARGE PLAN APPLICATION FOR SERVICE COMPANIES,
GAS PLANTS, REFINERIES, COMPRESSOR, AND CRUDE OIL PUMP STATIONS
(Refer to the OCD Guidelines for assistance in completing the application)

☒ New

☐ Renewal

☐ Modification

GW-267

1. Type: Bass James Facility - natural gas compressor station
2. Operator: Compressor Systems, Inc. for El Paso Field Services
P.O. Box 60760, Midland, TX 79711-0670 (CSI)
Address: 2500 City West Blvd., Suite 1400, Houston, TX 77042 (EPFS)

Contact Person: Sandra Miller, EPFS Phone: (505) 599-2141
3. Location: SW /4 SE /4 Section 36 Township 22S Range 30E
Submit large scale topographic map showing exact location.
See attached item 3
4. Attach the name, telephone number and address of the landowner of the facility site.
See attached item 4
5. Attach the description of the facility with a diagram indicating location of fences, pits, dikes and tanks on the facility.
See attached item 5
6. Attach a description of all materials stored or used at the facility.
See attached item 6
7. Attach a description of present sources of effluent and waste solids. Average quality and daily volume of waste water must be included.
See attached item 7
8. Attach a description of current liquid and solid waste collection/treatment/disposal procedures.
See attached item 8
9. Attach a description of proposed modifications to existing collection/treatment/disposal systems.
See attached item 9
10. Attach a routine inspection and maintenance plan to ensure permit compliance.
See attached item 10
11. Attach a contingency plan for reporting and clean-up of spills or releases.
See attached item 11
12. Attach geological/hydrological information for the facility. Depth to and quality of ground water must be included.
See attached item 12
13. Attach a facility closure plan, and other information as is necessary to demonstrate compliance with any other OCD rules, regulations and/or orders.
See attached item 13
14. CERTIFICATION

I hereby certify that the information submitted with this application is true and correct to the best of my knowledge and belief.

NAME: Sandra Miller Title: Superintendent, Environmental Compliance

Signature: *Sandra L Miller* Date: 10/11/96

Item 1

Indicate the major operational purpose of the facility. If the facility is a compressor station include the total combined site rated horsepower.

The Bass James facility is a natural gas compressor station owned and operated by Compressor Systems Inc. (CSI). The purpose of the facility is to compress gas in a gathering system. The facility will include one portable skid-mounted Caterpillar G3508 TALE engine and Ariel compressor package and associated storage tanks. The site rated horsepower will be 633. The facility will be located on a Bass Enterprises well pad.



Item 2

Name of operator or legally responsible party and local representative.

Legally Responsible Party

Hugh A. Shaffer
Vice President, Operations and Engineering
El Paso Field Services Company
2500 City West Blvd. Suite 1400
Houston, TX 77042
713-510-2500

Local Representative

Sandra Miller
Superintendent, Environmental Compliance
El Paso Field Services Company
614 Reilly Ave.
Farmington, NM 87401
505-599-2141
1-800-203-1347

Operator

Terry Christian
Compressor Systems, Inc.
P.O. Box 60760
Midland, TX 79711-0760
915-563-1170

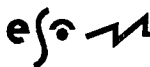


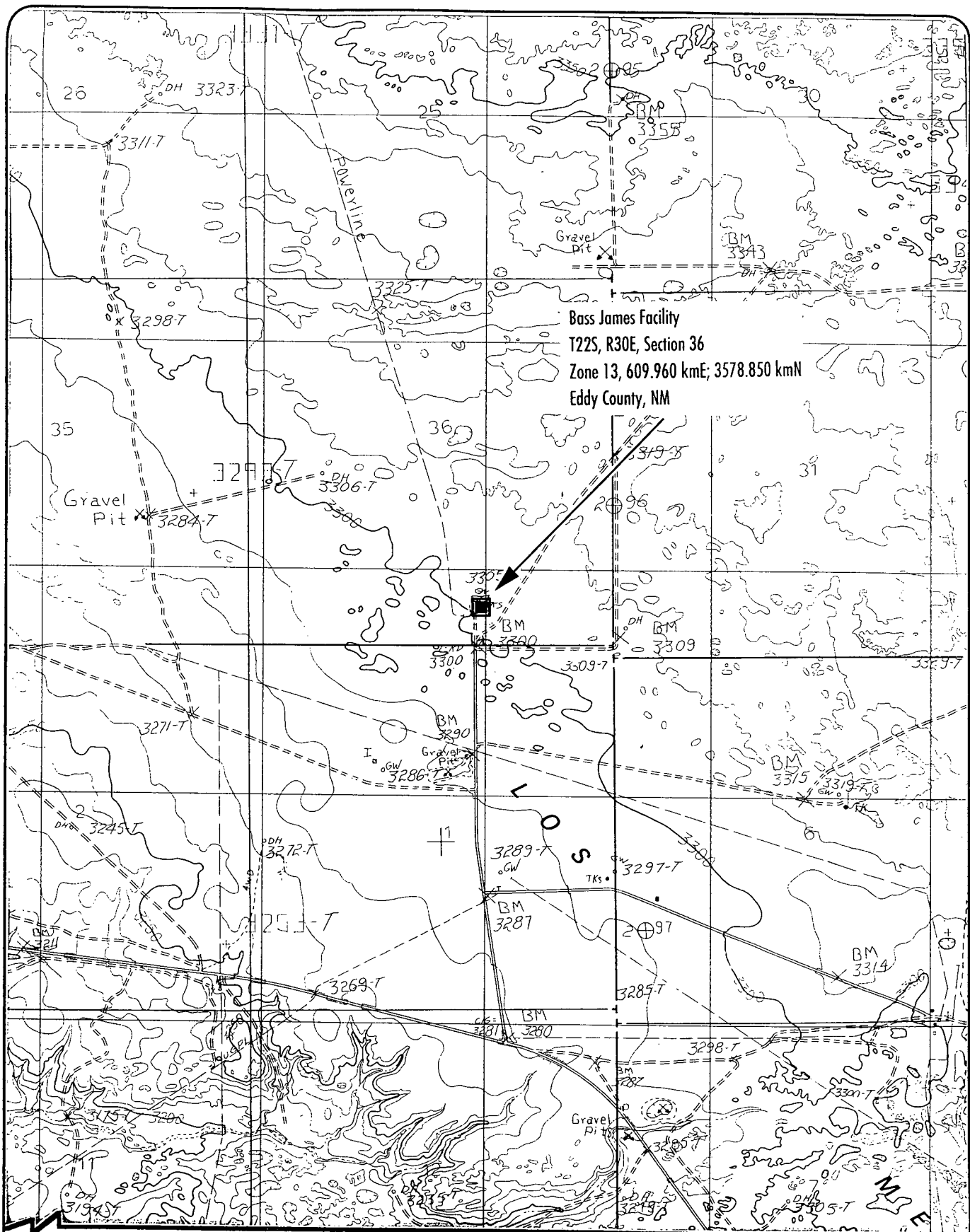
Item 3

Give a legal description of the location and county. Attach a large scale topographic map.

Eddy County, New Mexico

Township 22 South, Range 30 East, SW/4 SE/4 Sec. 36





Bass James Facility
T22S, R30E, Section 36
Zone 13, 609.960 kmE; 3578.850 kmN
Eddy County, NM



Scale: 1 in = 2000 ft = 0.610 km
1:24,000

Location of Facility

Los Medanos, New Mexico 7.5 Minute Quadrangle

Item 4

Attach the name, telephone number and address of the landowner of the facility site.

New Mexico State Land Office
Records Management Division
PO Box 1148
Santa Fe, NM 87504-1148
(505) 827-5721



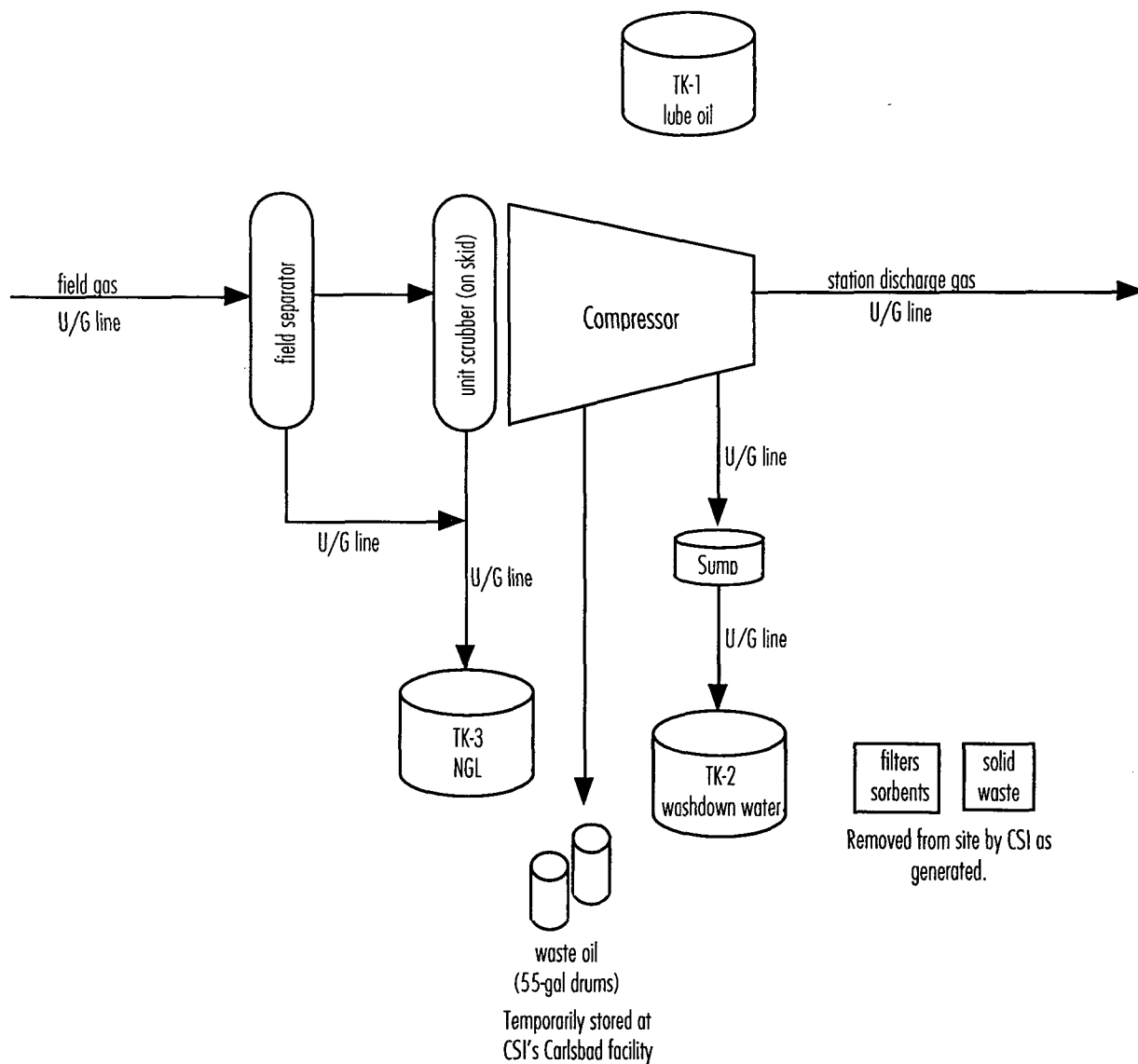
Item 5

Attach the description of the facility with a diagram indicating location of fences, pits, dikes and tanks on the facility.

Simplified process flow and layout diagrams are attached. Natural gas will enter the station from various wells in the gathering system via underground pipelines. The gas will pass through a field separator and a unit scrubber and then to the Ariel compressor driven by a Caterpillar G3508 TALE engine. The gas is then discharged back into the El Paso Field Services (EPFS) gathering system.

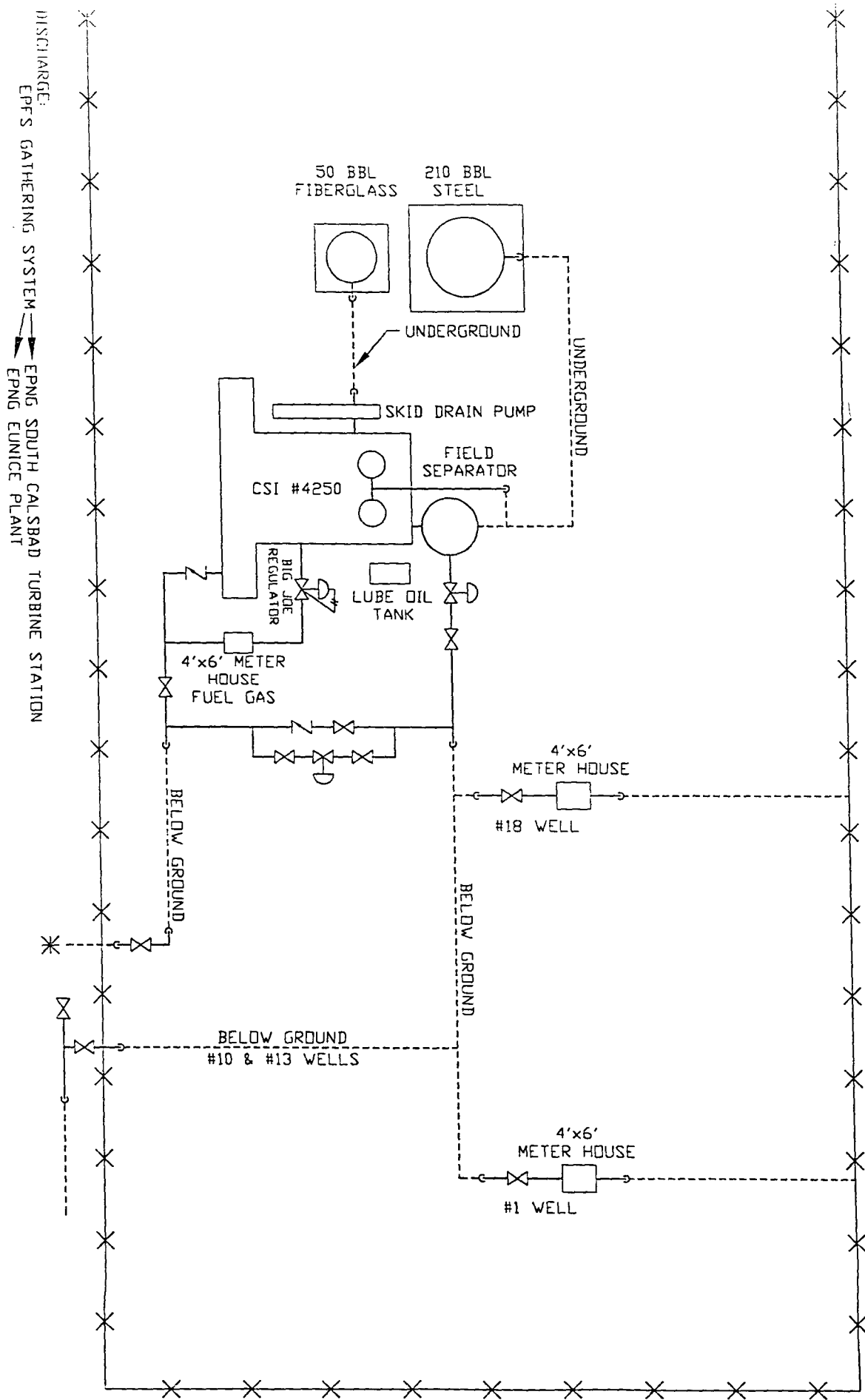
Natural gas liquids (NGL) from the field separator and unit scrubber are piped underground to a storage tank. Washdown water from the compressor engine is pumped via an underground line to a storage tank.





Bass James Facility Effluent and Solid Waste Production Diagram

BASS JAMES PROJECT
SECTION 36, T22S, R30E
EDDY CO., NM



Item 6

Attach a description of all materials stored or used at the facility.

<i>Container</i>	<i>ID</i>	<i>Material</i>	<i>Form</i>	<i>Volume</i>	<i>Location</i>	<i>Containment</i>
Steel					Near	Fiberglass containment
AGT-elev	TK-1	Lube Oil	Liquid	500 gal	compressor	basin with curb
Fiberglass		Washdown			Near	Impermeable barrier,
AGT	TK-2	water	Liquid	2100 gal	compressor	surrounded by gravel, secondary containment-dirt
Steel		Natural gas			Near	Impermeable barrier,
AGT	TK-3	liquids	Liquid	8820 gal	compressor	surrounded by gravel, secondary containment-dirt
Drum (not stored on-site)	-	Waste oil	Liquid	55 gal	Removed to CSI's Carlsbad facility	Curbed concrete pad

AGT - aboveground tank (non-pressurized)

AGT-elev - aboveground tank elevated or on saddle rank

All tanks will be installed on an impermeable layer and contained in berms constructed to contain 1.33 times the volume of the tank. Drums will be used to collect waste oil but will not be stored at the facility. Any aboveground saddle tanks will be installed on an impermeable containment such as curbed concrete or a metal pan or fiberglass containment.

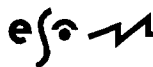
MSD sheets for the site are maintained in CSI's corporate office and are available upon request.



Item 7

Attach a description of present sources of effluent and waste solids. Average quality, and daily volume of waste water must be included.

<i>Source</i>	<i>Unit</i>	<i>Type of waste</i>	<i>Volume</i>	<i>Quality</i>
Compressor	Caterpillar G3508 TALE/	Used engine oil	<150 gal, 6x/yr	Used motor oil with no additives
		Used filters	3 filters, 12x/yr	No additives
	Ariel compressor	Washdown water	<75 gal, 12x/yr	Water with detergents and lube oil.
		Sorbent material and rags	varies	No additives
Field separator/ unit scrubber		Natural gas liquids	<250 bbl, 12x/yr	No additives
Miscellaneous	Trash	Solid waste	varies	Paper and other solid waste



Item 8

Attach a description of current liquid and solid waste collection/treatment/disposal procedures.

<i>Type of waste</i>	<i>Collection</i>	<i>Storage</i>	<i>Hauled by</i>	<i>Disposal</i>
Used oil, filters, sorbents	Drained in 55-gal drums	Steel drum	Removed as generated by CSI to CSI's corporate office, Carlsbad, NM	Safety-Kleen (formerly Industrial Services Corp.)
Washdown water	Collected in partially buried double-lined steel sump, pumped via underground steel pipes to TK-2	TK-2	Rowland Trucking	Controlled Recovery Inc.
Solid waste	None on-site	Trash receptacle	Removed as generated by CSI to CSI's corporate office, Carlsbad, NM	City of Carlsbad, municipal landfill
Natural gas liquids	Underground steel pipes	TK-3	Water—Rowland Trucking Hydrocarbons—PetroSource Partners	Water—Shea-Meg Corp. Disposal well, Dorstate #1 Hydrocarbons—taken to LACT facility then sold

Receiving Facilities

Rowland Trucking, 1609 East Greene, Carlsbad, NM, (505) 855-2053

Safety-Kleen (formerly Industrial Services Corp.), P. O. Box 711, Slaton, TX 79364, (800-762-1989). Physical location: Slaton Hwy., Posey, TX

Compressor Systems, Inc., 3611 National Parks Hwy, Carlsbad, NM, (505) 885-3586

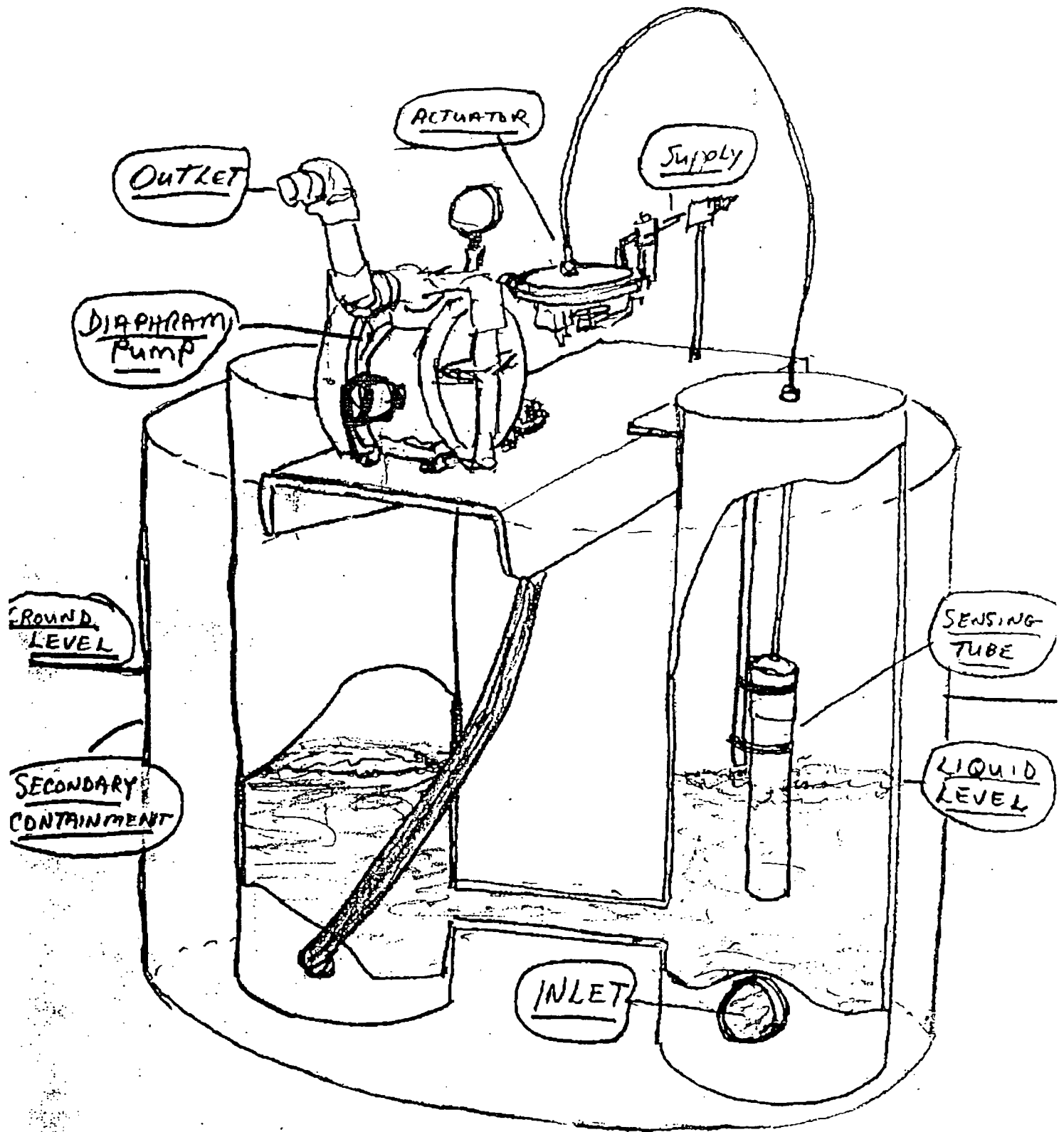
Shea-Meg Corp., Disposal Well Dorstate #1 (Maddox), located T25S, R28E, Sec. 27 se/4 of ne/4, Carlsbad, NM, (505) 885-3396

Controlled Recovery Inc., P.O. Box 369, Hobbs, NM 88240, (505) 393-1079

PetroSource Partners Limited, 129 S. Grimes, Hobbs, NM, 88240 (505) 397-7212

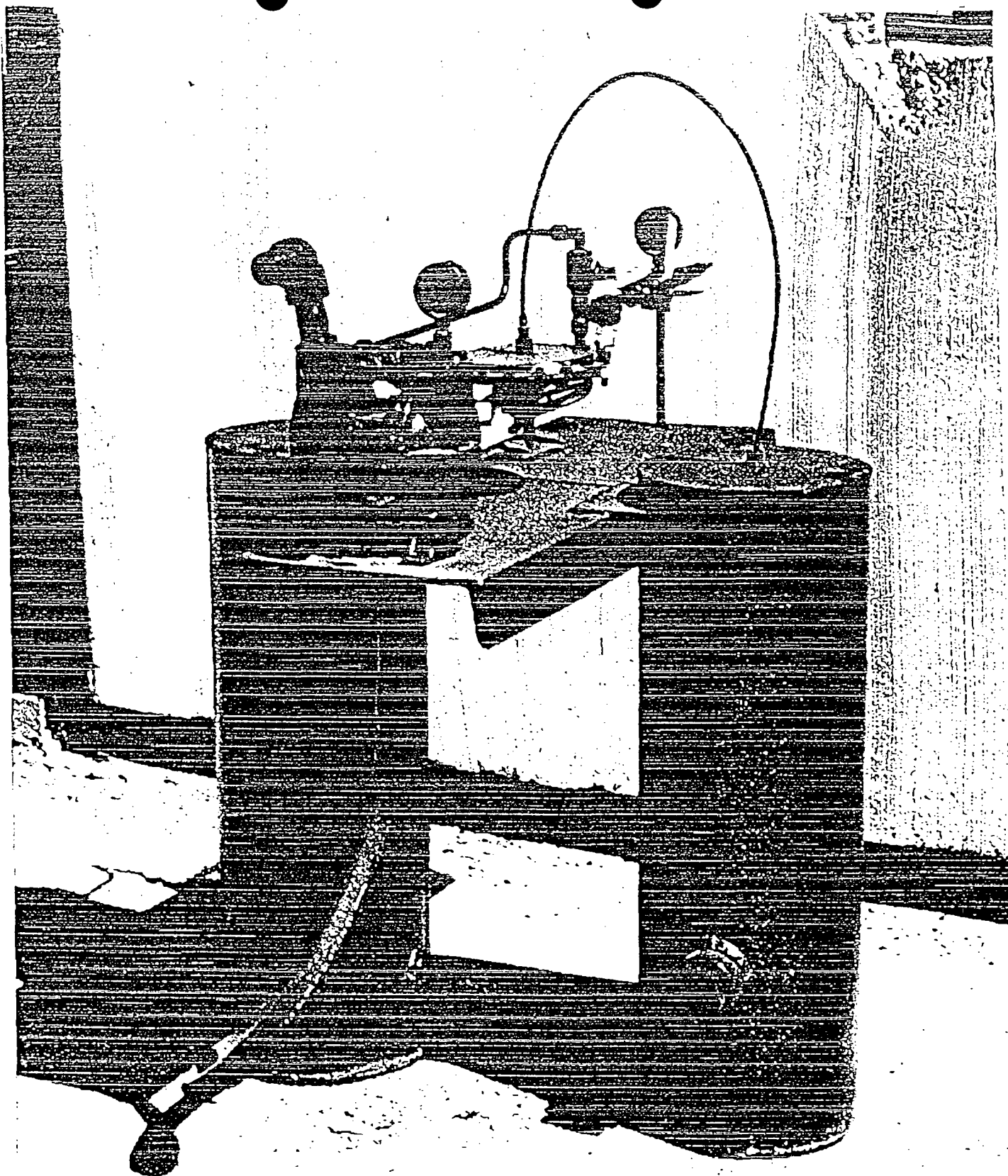
Engine washdown water generated during monthly washings will be drained via underground pipes into a double-lined, partially buried steel sump which will be treated for corrosion. The sump will also be equipped with a pump which automatically turns on to transfer liquids via aboveground pipes to the washdown water tank TK-2. A diagram of the sump pump is attached. No RCRA-listed hazardous wastes will be contained in the wash water. All piping will be doped and wrapped.





OPERATION

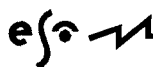
Air pressure created by rising liquid in the sensing tube is transmitted to a diaphragm in the actuator via nylon tubing. The diaphragm activates an air pilot valve which opens the valve to the pump.



Item 9

Attach a description of proposed modifications to existing collection/treatment/disposal systems.

No modifications to the facility are necessary to meet NMOCD requirements.

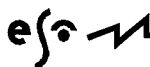


Item 10

Attach a routine inspection and maintenance plan to ensure permit compliance.

The facility will be inspected daily by the operator. Maintenance will be performed and records will be kept according to CSI procedures in place at other CSI facilities.

The integrity of any buried piping installed at the facility will be tested prior to commencement of operation and then re-tested once every five years. The double-lined below-grade sump installed at the facility will be internally inspected for leaks annually by CSI.



Item 11

Attach a contingency plan for reporting and clean-up of spills or releases.

CSI will handle all spills and leaks immediately as required by CSI procedures and will report all spills and leaks according to the requirements of the State of New Mexico found in NMOCD Rule 116 and WQCC Section 1203 (attached). CSI will notify El Paso Field Services of any and all spills and/or releases.



RULE 113. - SHOOTING AND CHEMICAL TREATMENT OF WELLS

(as of 3-1-91)

If injury results to the producing formation, injection interval, casing or casing seat from shooting, fracturing, or treating a well and which injury may create underground waste or contamination of fresh water, the operator shall give written notice to the Division within five (5) working days and proceed with diligence to use the appropriate method and means for rectifying such damage. If shooting, fracturing, or chemical treating results in irreparable injury to the well the Division may require the operator to properly plug and abandon the well.

RULE 114. - SAFETY REGULATIONS

(as of 3-1-91)

A. All oil wells shall be cleaned into a pit or tank, not less than 40 feet from the derrick floor and 150 feet from any fire hazard. All flowing oil wells must be produced through an oil and gas separator of ample capacity and in good working order. No boiler or portable electric lighting generator shall be placed or remain nearer than 150 feet to any producing well or oil tank. Any rubbish or debris that might constitute a fire hazard shall be removed to a distance of at least 150 feet from the vicinity of wells and tanks. All waste shall be burned or disposed of in such manner as to avoid creating a fire hazard.

B. When coming out of the hole with drill pipe, drilling fluid shall be circulated until equalized and subsequently drilling fluid level shall be maintained at a height sufficient to control subsurface pressures. During course of drilling blowout preventers shall be tested at least once each 24-hour period.

RULE 115. - WELL AND LEASE EQUIPMENT

(as of 3-1-91)

A. Christmas tree fittings or wellhead connections shall be installed and maintained in first class condition so that all necessary pressure tests may easily be made on flowing wells. On oil wells the Christmas tree fittings shall have a test pressure rating at least equivalent to the calculated or known pressure in the reservoir from which production is expected. On gas wells the Christmas tree fittings shall have a test pressure equivalent to at least 150 percent of the calculated or known pressure in the reservoir from which production is expected.

B. Valves shall be installed and maintained in good working order to permit pressures to be obtained on both casing and tubing. Each flowing well shall be equipped to control properly the flowing of each well, and in case of an oil well, shall be produced into an oil and gas separator of a type generally used in the industry.

DUE TO BE REVISED, still current as of 10/3/96

RULE 116. - NOTIFICATION OF FIRE, BREAKS, LEAKS, SPILLS
AND BLOWOUTS

(as of 3-1-91)

A. The Division shall be notified of any fire, break, leak, spill, or blowout occurring at any injection or disposal facility or at any oil or gas drilling, producing, transporting, or processing facility in the State of New Mexico by the person operating or controlling such facility.

B. "Facility," for the purpose of this rule, shall include any oil or gas well, any injection or disposal well, and any drilling or workover well; any pipe line through which crude oil, condensate, casinghead or natural gas, or injection or disposal fluid (gaseous or liquid) is gathered, piped, or transported (including field flow-lines and lead-lines but not including natural gas distribution systems); any receiving tank, holding tank, or storage tank, or receiving and storing receptacle into which crude oil, condensate, injection or disposal fluid, or casinghead or natural gas is produced, received, or stored; any injection or disposal pumping or compression station including related equipment; any processing or refining plant in which crude oil, condensate, or casinghead or natural gas is processed or refined; and any tank or ...

oil or gas well or injection or disposal well drilling operations or any tank, storage pit, or pond associated with oil or gas production or processing operations or with injection or disposal operations and containing hydrocarbons or hydrocarbon waste or residue, salt water, strong caustics or strong acids, or other deleterious chemicals or harmful contaminants.

C. Notification of such fire, break, leak, spill, or blowout shall be in accordance with the provisions set forth below:

(1) Well Blowouts. Notification of well blowouts and/or fires shall be "immediate notification" described below. ("Well blowout" is defined as being loss of control over and subsequent eruption of any drilling or workover well, or the rupture of the casing, casinghead, or wellhead or any oil or gas well or injection or disposal well, whether active or inactive, accompanied by the sudden emission of fluids, gaseous or liquid, from the well.)

(2) "Major" Breaks, Spills, or Leaks. Notification of breaks, spills, or leaks of 25 or more barrels of crude oil or condensate, or 100 barrels or more of salt water, none of which reaches a watercourse or enters a stream or lake; breaks, spills, or leaks in which one or more barrels of crude oil or condensate or 25 barrels or more of salt water does reach a watercourse or enters a stream or lake; and breaks, spills, or leaks of hydrocarbons or hydrocarbon waste or residue, salt water, strong caustics or strong acids, gases, or other deleterious chemicals or harmful contaminants of any magnitude which may with reasonable probability endanger human health or result in substantial damage to property, shall be "immediate notification" described below.

(3) "Minor" Breaks, Spills, or Leaks. Notification of breaks, spills, or leaks of 5 barrels or more but less than 25 barrels of crude oil or condensate, or 25 barrels or more but less than 100 barrels of salt water, none of which reaches a watercourse or enters a stream or lake, shall be "subsequent notification" described below.

(4) "Gas Leaks and Gas Line Breaks. Notification of gas leaks from any source or of gas pipe line breaks in which natural or casinghead gas of any quantity has escaped or is escaping which may with reasonable probability endanger human health or result in substantial damage to property shall be "immediate notification" described below. Notification of gas pipe line breaks or leaks in which the loss is estimated to be 1000 or more MCF of natural or casinghead gas but in which there is no danger to human health nor of substantial damage to property shall be "subsequent notification" described below.

(5) Tank Fires. Notification of fires in tanks or other receptacles caused by lightning or any other cause, if the loss is, or it appears that the loss will be, 25 or more barrels of crude oil or condensate, or fires which may with reasonable probability endanger human health or result in substantial damage to property, shall be "immediate notification" as described below. If the loss is, or it appears that the loss will be at least 5 barrels but less than 25 barrels, notification shall be "subsequent notification" described below.

(6) Drilling Pits, Slush Pits, and Storage Pits and Ponds. Notification of breaks and spills from any drilling pit, slush pit, or storage pit or pond in which any hydrocarbon or hydrocarbon waste or residue, strong caustic or strong acid, or other deleterious chemical or harmful contaminant endangers human health or does substantial surface damage, or reaches a watercourse or enters a stream or lake in such quantity as may with reasonable probability endanger human health or result in substantial damage to such watercourse, stream, or lake, or the contents thereof, shall be "immediate notification" as described below. Notification of breaks or spills of such magnitude as to not endanger human health, cause substantial surface damage, or result in substantial damage to any watercourse, stream, or lake, or the contents thereof, shall be "subsequent notification" described below, provided however, no notification shall be required where there is no threat of any damage resulting from the break or spill.

(7) IMMEDIATE NOTIFICATION. "Immediate Notification" shall be as soon as possible after discovery and shall be either in person or by telephone to the district office of the Division district in which the incident occurs, or if the incident occurs after normal business hours, to the District Supervisor, the Oil and Gas Inspector, or the Deputy Oil and Gas Inspector.

the incident shall also be submitted in DUPLICATE to the appropriate district office of the Division within ten days after discovery of the incident.

(8) SUBSEQUENT NOTIFICATION. "Subsequent Notification" shall be a complete written report of the incident and shall be submitted in duplicate to the district office of the Division district in which the incident occurred within ten days after discovery of the incident.

(9) CONTENT OF NOTIFICATION. All reports of fires, breaks, leaks, spills, or blowouts, whether verbal or written, shall identify the location of the incident by quarter-quarter, section, township, and range, and by distance and direction from the nearest town or prominent landmark so that the exact site of the incident can be readily located on the ground. The report shall specify the nature and quantity of the loss and also the general conditions prevailing in the area, including precipitation, temperature, and soil conditions. The report shall also detail the measures that have been taken and are being taken to remedy the situation reported.

(10) WATERCOURSE, for the purpose of this rule, is defined as any lake-bed or gully, draw, stream bed, wash, arroyo, or natural or man-made channel through which water flows or has flowed.

RULE 117. - WELL LOG, COMPLETION AND WORKOVER REPORTS

(as of 3-1-91)

Within 20 days after the completion of a well drilled for oil or gas, or the recompletion of a well into a different common source of supply, a completion report shall be filed with the Division on Form C-105. For the purpose of this rule, any hole drilled or cored below fresh water or which penetrates oil- or gas-bearing formations or which is drilled by an "owner" as defined herein shall be presumed to be a well drilled for oil or gas.

RULE 118. - HYDROGEN SULFIDE GAS - PUBLIC SAFETY

(as of 3-1-91)

A. The intent of this rule is to provide for the protection of the public's safety in areas where hydrogen sulfide (H_2S) gas in concentrations greater than 100 parts per million (PPM) may be encountered.

B. Producing operations should be conducted with due consideration and guidance from American Petroleum Institute (API) publication "Conducting Oil and Gas Production Operations Involving Hydrogen Sulfide" (RP-55). The operator of a lease producing, or a gas processing plant handling H_2S or any other related facility where H_2S gas is present in concentrations of 100 PPM or more shall take reasonable measures to forewarn and safeguard persons having occasion to be on or near the property. In addition to training operator's employees in H_2S safety such measures may include, but are not necessarily limited to, posting of warning signs, fencing of surface installations, installation of safety devices and wind direction indicators, and maintaining tanks, thief hatches and gaskets, valves and piping in condition so as to prevent avoidable loss of vapors. Where release of hydrogen sulfide is unavoidable, the operator shall burn or vent the gas stream in such a manner as to avoid endangering human life.

C. Wells drilled in known H_2S gas producing areas, or where there is substantial probability of encountering H_2S gas in concentrations of 100 PPM or more, should be planned and drilled with due regard to and guidance from API RP-49 "Recommended Practices for Safe Drilling of Wells Containing Hydrogen Sulfide", latest edition. Wells completed and serviced by well servicing units where there is substantial probability of encountering H_2S gas in concentrations of 100 PPM or more should be worked on with due regard to the latest industry accepted practices. These practices may include, but are not necessarily limited to, the proper training of personnel in H_2S safety and the use of H_2S safety equipment as listed for safe operations by the American Petroleum Institute draft report for "Land, Oil and Gas Well Servicing and Workover Operations Involving Hydrogen Sulfide."*

1995 OCT 27 PM 1:25

B. Plans, specifications and reports required by this Section, if related to facilities for the production, refinement and pipeline transmission of oil and gas, or products thereof, shall be filed instead with the Oil Conservation Division. [1-4-68, 12-1-95]

C. Plans and specifications required to be filed under this Section must be filed prior to the commencement of construction. [9-3-72]

1203. NOTIFICATION OF DISCHARGE--REMOVAL.

A. With respect to any discharge from any facility of oil or other water contaminant, in such quantity as may with reasonable probability injure or be detrimental to human health, animal or plant life, or property, or unreasonably interfere with the public welfare or the use of property, the following notifications and corrective actions are required: [2-17-74, 12-24-87]

1. As soon as possible after learning of such a discharge, but in no event more than twenty-four (24) hours thereafter, any person in charge of the facility shall orally notify the Chief of the Ground Water Protection and Remediation Bureau of the department, or his counterpart in any constituent agency delegated responsibility for enforcement of these rules as to any facility subject to such delegation. To the best of that person's knowledge, the following items of information shall be provided:

a. the name, address, and telephone number of the person or persons in charge of the facility, as well as of the owner and/or operator of the facility;

b. the name and address of the facility;

c. the date, time, location, and duration of the discharge;

d. the source and cause of discharge;

e. a description of the discharge, including its chemical composition;

f. the estimated volume of the discharge; and

g. any actions taken to mitigate immediate damage from the discharge.

[2-17-74, 2-20-81, 12-24-87, 12-1-95]

2. When in doubt as to which agency to notify, the

1995 OCT 27 PM 1:25

person in charge of the facility shall notify the Chief of the Ground Water Protection and Remediation Bureau of the department. If that department does not have authority pursuant to commission delegation, the department shall notify the appropriate constituent agency. [12-24-87, 12-1-95]

3. Within one week after the discharger has learned of the discharge, the facility owner and/or operator shall send written notification to the same department official, verifying the prior oral notification as to each of the foregoing items and providing any appropriate additions or corrections to the information contained in the prior oral notification. [12-24-87]

4. The oral and written notification and reporting requirements contained in this Subsection A are not intended to be duplicative of discharge notification and reporting requirements promulgated by the Oil Conservation Commission (OCC) or by the Oil Conservation Division (OCD); therefore, any facility which is subject to OCC or OCD discharge notification and reporting requirements need not additionally comply with the notification and reporting requirements herein. [2-17-74, 12-24-87]

5. As soon as possible after learning of such a discharge, the owner/operator of the facility shall take such corrective actions as are necessary or appropriate to contain and remove or mitigate the damage caused by the discharge. [2-17-74, 12-24-87]

6. If it is possible to do so without unduly delaying needed corrective actions, the facility owner/operator shall endeavor to contact and consult with the Chief of the Ground Water Protection and Remediation Bureau of the department or appropriate counterpart in a delegated agency, in an effort to determine the department's views as to what further corrective actions may be necessary or appropriate to the discharge in question. In any event, no later than fifteen (15) days after the discharger learns of the discharge, the facility owner/operator shall send to said Bureau Chief a written report describing any corrective actions taken and/or to be taken relative to the discharge. Upon a written request and for good cause shown, the Bureau Chief may extend the time limit beyond fifteen (15) days. [12-24-87, 12-1-95]

7. The Bureau Chief shall approve or disapprove in writing the foregoing corrective action report within thirty (30) days of its receipt by the department. In the event that the report is not satisfactory to the department, the Bureau Chief shall specify in writing to the facility owner/operator any shortcomings in the report or in the corrective actions already taken or proposed to be taken relative to the discharge, and shall give the facility owner/operator a reasonable and clearly specified

1995 OCT 27 PM 1:25

time within which to submit a modified corrective action report. The Bureau Chief shall approve or disapprove in writing the modified corrective action report within fifteen (15) days of its receipt by the department. [12-24-87]

8. In the event that the modified corrective action report also is unsatisfactory to the department, the facility owner/operator has five (5) days from the notification by the Bureau Chief that it is unsatisfactory to appeal to the department secretary. The department secretary shall approve or disapprove the modified corrective action report within five (5) days of receipt of the appeal from the Bureau Chief's decision. In the absence of either corrective action consistent with the approved corrective action report or with the decision of the secretary concerning the shortcomings of the modified corrective action report, the department may take whatever enforcement or legal action it deems necessary or appropriate. [12-24-87, 12-1-95]

9. If the secretary determines that the discharge causes or may with reasonable probability cause water pollution in excess of the standards and requirements of Section 4103 of this Part, and the water pollution will not be abated within one hundred and eighty (180) days after notice is required to be given pursuant to Section 1203.A.1 of this Part, the secretary may notify the facility owner/operator that he is a responsible person and that an abatement plan may be required pursuant to Sections 4104 and 4106.A of this Part. [12-1-95]

B. Exempt from the requirements of this Section are continuous or periodic discharges which are made: [2-17-74]

1. in conformance with regulations of the commission and rules, regulations or orders of other state or federal agencies; or [2-17-74]

2. in violation of regulations of the commission, but pursuant to an assurance of discontinuance or schedule of compliance approved by the commission or one of its duly authorized constituent agencies. [2-17-74]

C. As used in this Section and in Sections 4100 through 4115, but not in other Sections of this Part: [2-17-74, 12-1-95]

1. "discharge" means spilling, leaking, pumping, pouring, emitting, emptying, or dumping into water or in a location and manner where there is a reasonable probability that the discharged substance will reach surface or subsurface water; [2-17-74]

2. "facility" means any structure, installation, operation, storage tank, transmission line, motor vehicle, rolling

NOV OCT 27 PM 1:25

stock, or activity of any kind, whether stationary or mobile;
[2-17-74]

3. "oil" means oil of any kind or in any form including petroleum, fuel oil, sludge, oil refuse and oil mixed with wastes; [2-17-74]

4. "operator" means the person or persons responsible for the overall operations of a facility; and
[12-24-87]

5. "owner" means the person or persons who own a facility, or part of a facility. [12-24-87]

D. Notification of discharge received pursuant to this Part or information obtained by the exploitation of such notification shall not be used against any such person in any criminal case, except for perjury or for giving a false statement.
[2-17-74]

E. Any person who has any information relating to any discharge from any facility of oil or other water contaminant, in such quantity as may with reasonable probability injure or be detrimental to human health, animal or plant life, or property, or unreasonably interfere with the public welfare or the use of property, is urged to notify the Chief of the Ground Water Protection and Remediation Bureau of the department. Upon such notification, the secretary may require an owner/operator or responsible person to perform corrective actions pursuant to Sections 1203.A.5 or 1203.A.9 of this Part. [12-1-95]

[1204-1209] Reserved

1210. VARIANCE PETITIONS.

A. Any person seeking a variance pursuant to Section 74-6-4 (G) NMSA 1978, shall do so by filing a written petition with the commission. The petitioner may submit with his petition any relevant documents or material which the petitioner believes would support his petition. Petitions shall: [7-19-68, 11-27-70, 9-3-72]

1. state the petitioner's name and address;
[7-19-68, 11-27-70]

2. state the date of the petition; [7-19-68]

3. describe the facility or activity for which the variance is sought; [7-19-68, 11-27-70]

4. state the address or description of the property upon which the facility is located; [11-27-70]

Item 12

Attach geological/hydrological information for the facility. Depth to and quality of ground water must be included.

Bass James Facility is located in the Late Permian Ochoan Rustler Formation which overlies the Salado Formation in most of the area east of the Pecos River. The Rustler Formation is composed of a sequence of anhydrite and gypsum with interbedded dolomite and clay in the upper section and primarily clastics in the lower section (NM Bureau of Mines & Mineral Resources, 1976, Resources Map 7, Prepared by US Department of Interior, Geological Survey).

Water from the Rustler Formation is generally of poor quality although the Rustler yields water to many stock wells and some domestic wells. The Rustler formation, throughout most of the area surrounding the facility, is typically the only source of ground water. Water may be obtained from the underlying Whitehorse group in the northeast part of the outcrop area. Where the Rustler is underlain by the Salado, drilling below the Rustler for potable water would be useless (Hendrickson and Jones, 1952, Geology and Ground-water Resources of Eddy County, NM, New Mexico Institute of Mining and Technology, Ground-Water Report 3).

As of October 3, 1996, no wells have been recorded at the State Engineer's Office in Roswell within one-quarter mile of the facility. Water from a well (#574) dug in 1972 and located approximately 1.5 miles south of the facility has been analyzed (Richey, Wells, and Stephens, 1985, Geohydrology of the Delaware Basin and Vicinity, Texas and New Mexico: U.S. Geological Survey, Water-Resources Investigations Report 84-4077). The water level was reached at 256.9 feet below the ground surface and the Total Dissolved Solids concentration recorded at this well was 3860 parts per million. This location is the closest found with recorded depth to ground water information. Based on this information, the estimated depth to ground water at the facility would be approximately 250 feet.

Another well, located approximately 5 miles west of the facility, was analyzed in approximately the 1940's. (Hendrickson and Jones, 1952, Geology and Ground-water Resources of Eddy County, NM, New Mexico Institute of Mining and Technology, Ground-Water Report 3). The Total Dissolved Solids concentration recorded as this well was 3290 parts per million.

An unnamed drainage is approximately two miles south/southwest of the facility (Los Medaños 7.5' U.S.G.S. Quadrangle). No groundwater discharge sites such as seeps,



springs, marshes, or swamps are located on the Divide 7.5' U.S.G.S. Quadrangle within 1 mile of the facility.

The soil type at the facility is Berino Complex, 0 to 3 percent slopes, eroded. The Berino series consists of deep, noncalcareous, yellowish-red to red, sandy soils that developed in wind-worked material of mixed origin. Berino soils retain nearly all the moisture that falls, but the surface layer has low water-holding capacity (Soil Survey, Eddy County, New Mexico, 1971, U.S.D.A., Soil Conservation Survey).

Flooding potential at the facility is moderate since permeability is rapid in the surface layer, but it is moderately slow in the subsoil (Soil Survey, Eddy County, New Mexico, 1971, U.S.D.A., Soil Conservation Survey). Any runoff from the facility would probably collect in the shallow depressions to the south of the facility.



Item 13

Attach a facility closure plan, and other information as is necessary to demonstrate compliance with any other OCD rules, regulations and/or orders.

All reasonable and necessary measures will be taken to prevent the exceedance of 20 NMAC 6.2.3103 quality standards should CSI choose to permanently close the facility. Closure measures will include removal or closure in place of all underground piping and equipment. All tanks will be emptied. No potentially toxic materials or effluents will remain on the site. All potential sources of toxic pollutants will be inspected. Should contaminated soil be discovered, any necessary reporting under NMOCD Rule 116 and 20 NMAC 6.2.1203 will be made, and clean-up activities will commence. Post-closure maintenance and monitoring plans would not be necessary unless contamination is encountered.

