

District I
1625 N. French Dr., Hobbs, NM 88240

District II
1301 W. Grand Ave., Artesia, NM 88210

District III
1000 Rio Brazos Rd., Aztec, NM 87410

District IV
1220 S. St. Francis Dr., Santa Fe, NM 87505

State of New Mexico
Energy Minerals and Natural Resources
Department
Oil Conservation Division
1220 South St. Francis Dr.
Santa Fe, NM 87505

Form C-144
July 21, 2008

For temporary pits, closed-loop systems, and below-grade tanks, submit to the appropriate NMOCD District Office.

For permanent pits and exceptions submit to the Santa Fe Environmental Bureau office and provide a copy to the appropriate NMOCD District Office.

Pit, Closed-Loop System, Below-Grade Tank, or
Proposed Alternative Method Permit or Closure Plan Application

- Type of action: ☒ Permit of a pit, closed-loop system, below-grade tank, or proposed alternative method
☐ Closure of a pit, closed-loop system, below-grade tank, or proposed alternative method
☐ Modification to an existing permit
☐ Closure plan only submitted for an existing permitted or non-permitted pit, closed-loop system, below-grade tank, or proposed alternative method

Instructions: Please submit one application (Form C-144) per individual pit, closed-loop system, below-grade tank or alternative request

Please be advised that approval of this request does not relieve the operator of liability should operations result in pollution of surface water, ground water or the environment. Nor does approval relieve the operator of its responsibility to comply with any other applicable governmental authority's rules, regulations or ordinances.

1
Operator: Burlington Resources Oil & Gas Company, LP OGRID#: 14538
Address: PO Box 4289, Farmington, NM 87499
Facility or well name: CORNELL COM 500S
API Number: 3004533573 OCD Permit Number: _____
U/L or Qtr/Qtr: P Section: 2 Township: 29N Range: 12W County: San Juan
Center of Proposed Design: Latitude: 36.74947°N Longitude: -108.06229°W NAD: ☒ 1927 ☐ 1983
Surface Owner: ☐ Federal ☐ State ☒ Private ☐ Tribal Trust or Indian Allotment

2
☐ **Pit:** Subsection F or G of 19.15.17.11 NMAC
Temporary: ☐ Drilling ☐ Workover
☐ Permanent ☐ Emergency ☐ Cavitation ☐ P&A
☐ Lined ☐ Unlined Liner type: Thickness _____ mil ☐ LLDPE ☐ HDPE ☐ PVC ☐ Other _____
☐ String-Reinforced
Liner Seams: ☐ Welded ☐ Factory ☐ Other _____ Volume: _____ bbl Dimensions L _____ x W _____ x D _____

3
☐ **Closed-loop System:** Subsection H of 19.15.17.11 NMAC
Type of Operation: ☐ P&A ☐ Drilling a new well ☐ Workover or Drilling (Applies to activities which require prior approval of a permit or notice of intent)
☐ Drying Pad ☐ Above Ground Steel Tanks ☐ Haul-off Bins ☐ Other _____
☐ Lined ☐ Unlined Liner type: Thickness _____ mil ☐ LLDPE ☐ HDPE ☐ PVD ☐ Other _____
Liner Seams: ☐ Welded ☐ Factory ☐ Other _____

4
☒ **Below-grade tank:** Subsection I of 19.15.17.11 NMAC
Volume: 120 bbl Type of fluid: Produced Water
Tank Construction material: Metal
☐ Secondary containment with leak detection ☒ Visible sidewalls, liner, 6-inch lift and automatic overflow shut-off
☐ Visible sidewalls and liner ☐ Visible sidewalls only ☐ Other _____
Liner Type: Thickness _____ mil ☐ HDPE ☐ PVC ☒ Other Unspecified

5
☐ **Alternative Method:**
Submittal of an exception request is required. Exceptions must be submitted to the Santa Fe Environmental Bureau office for consideration of approval.

6 **Fencing:** Subsection D of 19.15.17.11 NMAC (*Applies to permanent pit, temporary pits, and below-grade tanks*)

- ☐ Chain link, six feet in height, two strands of barbed wire at top (*Required if located within 1000 feet of a permanent residence, school, hospital, institution or church*)
- ☐ Four foot height, four strands of barbed wire evenly spaced between one and four feet
- ☒ Alternate. Please specify 4' hog wire fencing topped with two strands barbed wire.

7 **Netting:** Subsection E of 19.15.17.11 NMAC (*Applies to permanent pits and permanent open top tanks*)

- ☒ Screen ☐ Netting ☐ Other _____
- ☐ Monthly inspections (*If netting or screening is not physically feasible*)

8 **Signs:** Subsection C of 19.15.17.11 NMAC

- ☐ 12" X 24", 2" lettering, providing Operator's name, site location, and emergency telephone numbers
- ☒ Signed in compliance with 19.15.3.103 NMAC

9 **Administrative Approvals and Exceptions:**

Justifications and/or demonstrations of equivalency are required. Please refer to 19.15.17 NMAC for guidance.

Please check a box if one or more of the following is requested, if not leave blank:

- ☒ Administrative approval(s): Requests must be submitted to the appropriate division district of the Santa Fe Environmental Bureau office for consideration of approval. (Fencing/BGT Liner)
- ☐ Exception(s): Requests must be submitted to the Santa Fe Environmental Bureau office for consideration of approval.

10 **Siting Criteria (regarding permitting):** 19.15.17.10 NMAC

Instructions: The applicant must demonstrate compliance for each siting criteria below in the application. Recommendations of acceptable source material are provided below. Requests regarding changes to certain siting criteria may require administrative approval from the appropriate district office or may be considered an exception which must be submitted to the Santa Fe Environmental Bureau Office for consideration of approval. Applicant must attach justification for request. Please refer to 19.15.17.10 NMAC for guidance. Siting criteria does not apply to drying pads or above grade-tanks associated with a closed-loop system.

Ground water is less than 50 feet below the bottom of the temporary pit, permanent pit, or below-grade tank.

- NM Office of the State Engineer - iWATERS database search; USGS; Data obtained from nearby wells

☐ Yes ☒ No

Within 300 feet of a continuously flowing watercourse, or 200 feet of any other watercourse, lakebed, sinkhole, or playa lake (measured from the ordinary high-water mark).

- Topographic map; Visual inspection (certification) of the proposed site

☐ Yes ☒ No

Within 300 feet from a permanent residence, school, hospital, institution, or church in existence at the time of initial application.

(*Applies to temporary, emergency, or cavitation pits and below-grade tanks*)

- Visual inspection (certification) of the proposed site; Aerial photo; Satellite image

☐ Yes ☒ No

☐ NA

Within 1000 feet from a permanent residence, school, hospital, institution, or church in existence at the time of initial application.

(*Applied to permanent pits*)

- Visual inspection (certification) of the proposed site; Aerial photo; Satellite image

☐ Yes ☐ No

☒ NA

Within 500 horizontal feet of a private, domestic fresh water well or spring that less than five households use for domestic or stock watering purposes, or within 1000 horizontal feet of any other fresh water well or spring, in existence at the time of initial application.

☐ Yes ☒ No

- NM Office of the State Engineer - iWATERS database search; Visual inspection (certification) of the proposed site.

Within incorporated municipal boundaries or within a defined municipal fresh water well field covered under a municipal ordinance adopted pursuant to NMSA 1978, Section 3-27-3, as amended

☐ Yes ☒ No

- Written confirmation or verification from the municipality; Written approval obtained from the municipality

Within 500 feet of a wetland.

☐ Yes ☒ No

- US Fish and Wildlife Wetland Identification map; Topographic map; Visual inspection (certification) of the proposed site

Within the area overlying a subsurface mine.

☐ Yes ☒ No

- Written confirmation or verification or map from the NM EMNRD - Mining and Mineral Division

Within an unstable area.

☐ Yes ☒ No

- Engineering measures incorporated into the design; NM Bureau of Geology & Mineral Resources; USGS; NM Geological Society; Topographic map

Within a 100-year floodplain

☐ Yes ☒ No

- FEMA map

11
Temporary Pits, Emergency Pits and Below-grade Tanks Permit Application Attachment Checklist: Subsection B of 19.15.17.9 NMAC
Instructions: Each of the following items must be attached to the application. Please indicate, by a check mark in the box, that the documents are attached.

- ☒ Hydrogeologic Report (Below-grade Tanks) - based upon the requirements of Paragraph (4) of Subsection B of 19.15.17.9 NMAC
☐ Hydrogeologic Data (Temporary and Emergency Pits) - based upon the requirements of Paragraph (2) of Subsection B of 19.15.17.9
☒ Siting Criteria Compliance Demonstrations - based upon the appropriate requirements of 19.15.17.10 NMAC
☒ Design Plan - based upon the appropriate requirements of 19.15.17.11 NMAC
☒ Operating and Maintenance Plan - based upon the appropriate requirements of 19.15.17.12 NMAC
☒ Closure Plan (Please complete Boxes 14 through 18, if applicable) - based upon the appropriate requirements of Subsection C of 19.15.17.9 NMAC and 19.15.17.13 NMAC

☐ Previously Approved Design (attach copy of design) API _____ or Permit _____

12
Closed-loop Systems Permit Application Attachment Checklist: Subsection B of 19.15.17.9 NMAC

Instructions: Each of the following items must be attached to the application. Please indicate, by a check mark in the box, that the documents are attached.

- ☐ Geologic and Hydrogeologic Data (only for on-site closure) - based upon the requirements of Paragraph (3) of Subsection B of 19.15.17.9
☐ Siting Criteria Compliance Demonstrations (only for on-site closure) - based upon the appropriate requirements of 19.15.17.10 NMAC
☐ Design Plan - based upon the appropriate requirements of 19.15.17.11 NMAC
☐ Operating and Maintenance Plan - based upon the appropriate requirements of 19.15.17.12 NMAC
☐ Closure Plan (Please complete Boxes 14 through 18, if applicable) - based upon the appropriate requirements of Subsection C of 19.15.17.9 NMAC and 19.15.17.13 NMAC

☐ Previously Approved Design (attach copy of design) API _____

☐ Previously Approved Operating and Maintenance Plan API _____

13
Permanent Pits Permit Application Checklist: Subsection B of 19.15.17.9 NMAC

Instructions: Each of the following items must be attached to the application. Please indicate, by a check mark in the box, that the documents are attached.

- ☐ Hydrogeologic Report - based upon the requirements of Paragraph (1) of Subsection B of 19.15.17.9 NMAC
☐ Siting Criteria Compliance Demonstrations - based upon the appropriate requirements of 19.15.17.10 NMAC
☐ Climatological Factors Assessment
☐ Certified Engineering Design Plans - based upon the appropriate requirements of 19.15.17.11 NMAC
☐ Dike Protection and Structural Integrity Design: based upon the appropriate requirements of 19.15.17.11 NMAC
☐ Leak Detection Design - based upon the appropriate requirements of 19.15.17.11 NMAC
☐ Liner Specifications and Compatibility Assessment - based upon the appropriate requirements of 19.15.17.11 NMAC
☐ Quality Control/Quality Assurance Construction and Installation Plan
☐ Operating and Maintenance Plan - based upon the appropriate requirements of 19.15.17.12 NMAC
☐ Freeboard and Overtopping Prevention Plan - based upon the appropriate requirements of 19.15.17.11 NMAC
☐ Nuisance or Hazardous Odors, including H₂S, Prevention Plan
☐ Emergency Response Plan
☐ Oil Field Waste Stream Characterization
☐ Monitoring and Inspection Plan
☐ Erosion Control Plan
☐ Closure Plan - based upon the appropriate requirements of Subsection C of 19.15.17.9 NMAC and 19.15.17.13 NMAC

14
Proposed Closure: 19.15.17.13 NMAC

Instructions: Please complete the applicable boxes, Boxes 14 through 18, in regards to the proposed closure plan.

Type: ☐ Drilling ☐ Workover ☐ Emergency ☐ Cavitation ☐ P&A ☐ Permanent Pit ☒ Below-grade Tank ☐ Closed-loop System
☐ Alternative

Proposed Closure Method: ☒ Waste Excavation and Removal (Below-Grade Tank)
☐ Waste Removal (Closed-loop systems only)
☐ On-site Closure Method (only for temporary pits and closed-loop systems)
☐ In-place Burial ☐ On-site Trench
☐ Alternative Closure Method (Exceptions must be submitted to the Santa Fe Environmental Bureau for consideration)

15
Waste Excavation and Removal Closure Plan Checklist: (19.15.17.13 NMAC) *Instructions: Each of the following items must be attached to the closure plan. Please indicate, by a check mark in the box, that the documents are attached.*

- ☒ Protocols and Procedures - based upon the appropriate requirements of 19.15.17.13 NMAC
☒ Confirmation Sampling Plan (if applicable) - based upon the appropriate requirements of Subsection F of 19.15.17.13 NMAC
☒ Disposal Facility Name and Permit Number (for liquids, drilling fluids and drill cuttings)
☒ Soil Backfill and Cover Design Specifications - based upon the appropriate requirements of Subsection H of 19.15.17.13 NMAC
☒ Re-vegetation Plan - based upon the appropriate requirements of Subsection I of 19.15.17.13 NMAC
☒ Site Reclamation Plan - based upon the appropriate requirements of Subsection G of 19.15.17.13 NMAC

Waste Removal Closure For Closed-loop Systems That Utilize Above Ground Steel Tanks or Haul-off Bins Only: (19.15.17.13.D NMAC)

Instructions: Please identify the facility or facilities for the disposal of liquids, drilling fluids and drill cuttings. Use attachment if more than two facilities are required.

Disposal Facility Name: _____ Disposal Facility Permit #: _____

Disposal Facility Name: _____ Disposal Facility Permit #: _____

Will any of the proposed closed-loop system operations and associated activities occur on or in areas that will not be used for future service and operations?

☐ Yes (If yes, please provide the information) ☐ No

Required for impacted areas which will not be used for future service and operations:

- ☐ Soil Backfill and Cover Design Specification - based upon the appropriate requirements of Subsection H of 19.15.17.13 NMAC
☐ Re-vegetation Plan - based upon the appropriate requirements of Subsection I of 19.15.17.13 NMAC
☐ Site Reclamation Plan - based upon the appropriate requirements of Subsection G of 19.15.17.13 NMAC

Siting Criteria (Regarding on-site closure methods only): 19.15.17.10 NMAC

Instructions: Each siting criteria requires a demonstration of compliance in the closure plan. Recommendations of acceptable source material are provided below. Requests regarding changes to certain siting criteria may require administrative approval from the appropriate district office or may be considered an exception which must be submitted to the Santa Fe Environmental Bureau office for consideration of approval. Justifications and/or demonstrations of equivalency are required. Please refer to 19.15.17.10 NMAC for guidance.

Ground water is less than 50 feet below the bottom of the buried waste.

- NM Office of the State Engineer - iWATERS database search; USGS; Data obtained from nearby wells

☐ Yes ☐ No

☐ N/A

Ground water is between 50 and 100 feet below the bottom of the buried waste

- NM Office of the State Engineer - iWATERS database search; USGS; Data obtained from nearby wells

☐ Yes ☐ No

☐ N/A

Ground water is more than 100 feet below the bottom of the buried waste.

- NM Office of the State Engineer - iWATERS database search; USGS; Data obtained from nearby wells

☐ Yes ☐ No

☐ N/A

Within 300 feet of a continuously flowing watercourse, or 200 feet of any other significant watercourse or lakebed, sinkhole, or playa lake (measured from the ordinary high-water mark).

- Topographic map; Visual inspection (certification) of the proposed site

☐ Yes ☐ No

Within 300 feet from a permanent residence, school, hospital, institution, or church in existence at the time of initial application.

- Visual inspection (certification) of the proposed site; Aerial photo; satellite image

☐ Yes ☐ No

☐ Yes ☐ No

Within 500 horizontal feet of a private, domestic fresh water well or spring that less than five households use for domestic or stock watering purposes, or within 1000 horizontal feet of any other fresh water well or spring, in existence at the time of the initial application.

- NM Office of the State Engineer - iWATERS database; Visual inspection (certification) of the proposed site

☐ Yes ☐ No

Within incorporated municipal boundaries or within a defined municipal fresh water well field covered under a municipal ordinance adopted pursuant to NMSA 1978, Section 3-27-3, as amended.

- Written confirmation or verification from the municipality; Written approval obtained from the municipality

☐ Yes ☐ No

Within 500 feet of a wetland

- US Fish and Wildlife Wetland Identification map; Topographic map; Visual inspection (certification) of the proposed site

☐ Yes ☐ No

Within the area overlying a subsurface mine.

- Written confirmation or verification or map from the NM EMNRD-Mining and Mineral Division

☐ Yes ☐ No

Within an unstable area.

- Engineering measures incorporated into the design; NM Bureau of Geology & Mineral Resources; USGS; NM Geological Society; Topographic map

☐ Yes ☐ No

Within a 100-year floodplain.

- FEMA map

☐ Yes ☐ No

On-Site Closure Plan Checklist: (19.15.17.13 NMAC) Instructions: Each of the following items must be attached to the closure plan. Please indicate, by a check mark in the box, that the documents are attached.

- ☐ Siting Criteria Compliance Demonstrations - based upon the appropriate requirements of 19.15.17.10 NMAC
☐ Proof of Surface Owner Notice - based upon the appropriate requirements of Subsection F of 19.15.17.13 NMAC
☐ Construction/Design Plan of Burial Trench (if applicable) based upon the appropriate requirements of 19.15.17.11 NMAC
☐ Construction/Design Plan of Temporary Pit (for in place burial of a drying pad) - based upon the appropriate requirements of 19.15.17.11 NMAC
☐ Protocols and Procedures - based upon the appropriate requirements of 19.15.17.13 NMAC
☐ Confirmation Sampling Plan (if applicable) - based upon the appropriate requirements of Subsection F of 19.15.17.13 NMAC
☐ Waste Material Sampling Plan - based upon the appropriate requirements of Subsection F of 19.15.17.13 NMAC
☐ Disposal Facility Name and Permit Number (for liquids, drilling fluids and drill cuttings or in case on-site closure standards cannot be achieved)
☐ Soil Cover Design - based upon the appropriate requirements of Subsection H of 19.15.17.13 NMAC
☐ Re-vegetation Plan - based upon the appropriate requirements of Subsection I of 19.15.17.13 NMAC
☐ Site Reclamation Plan - based upon the appropriate requirements of Subsection G of 19.15.17.13 NMAC

19
Operator Application Certification:
 I hereby certify that the information submitted with this application is true, accurate and complete to the best of my knowledge and belief.

Name (Print): Crystal Tafoya Title: Regulatory Technician
 Signature: Crystal Tafoya Date: 12/22/2008
 e-mail address: crystal.tafoya@conocophillips.com Telephone: 505-326-9837

20
OCD Approval: ☐ Permit Application (including closure plan) ☒ Closure Plan (only) ☐ OCD Conditions (see attachment)

OCD Representative Signature: [Signature] Approval Date: 12/10/14
 Title: Environmental Engineer OCD Permit Number: _____

21
Closure Report (required within 60 days of closure completion): Subsection K of 19.15.17.13 NMAC
Instructions: Operators are required to obtain an approved closure plan prior to implementing any closure activities and submitting the closure report. The closure report is required to be submitted to the division within 60 days of the completion of the closure activities. Please do not complete this section of the form until an approved closure plan has been obtained and the closure activities have been completed.

☐ Closure Completion Date: _____

22
Closure Method:

☐ Waste Excavation and Removal ☐ On-site Closure Method ☐ Alternative Closure Method ☐ Waste Removal (Closed-loop systems only)

☐ If different from approved plan, please explain.

23
Closure Report Regarding Waste Removal Closure For Closed-loop Systems That Utilize Above Ground Steel Tanks or Haul-off Bins Only:
Instructions: Please identify the facility or facilities for where the liquids, drilling fluids and drill cuttings were disposed. Use attachment if more than two facilities were utilized.

Disposal Facility Name: _____ Disposal Facility Permit Number: _____
 Disposal Facility Name: _____ Disposal Facility Permit Number: _____

Were the closed-loop system operations and associated activities performed on or in areas that *will not* be used for future service and operations?
☐ Yes (If yes, please demonstrate compliance to the items below) ☐ No

Required for impacted areas which will not be used for future service and operations:

☐ Site Reclamation (Photo Documentation)
☐ Soil Backfilling and Cover Installation
☐ Re-vegetation Application Rates and Seeding Technique

24
Closure Report Attachment Checklist: *Instructions: Each of the following items must be attached to the closure report. Please indicate, by a check mark in the box, that the documents are attached.*

☐ Proof of Closure Notice (surface owner and division)
☐ Proof of Deed Notice (required for on-site closure)
☐ Plot Plan (for on-site closures and temporary pits)
☐ Confirmation Sampling Analytical Results (if applicable)
☐ Waste Material Sampling Analytical Results (if applicable)
☐ Disposal Facility Name and Permit Number
☐ Soil Backfilling and Cover Installation
☐ Re-vegetation Application Rates and Seeding Technique
☐ Site Reclamation (Photo Documentation)

On-site Closure Location: Latitude: _____ Longitude: _____ NAD ☐ 1927 ☐ 1983

25
Operator Closure Certification:
 I hereby certify that the information and attachments submitted with this closure report is true, accurate and complete to the best of my knowledge and belief. I also certify that the closure complies with all applicable closure requirements and conditions specified in the approved closure plan.

Name (Print): _____ Title: _____
 Signature: _____ Date: _____
 e-mail address: _____ Telephone: _____

**New Mexico Office of the State Engineer
POD Reports and Downloads**

Township: Range: Sections:

NAD27 X: Y: Zone: Search Radius:

County: Basin: Number: Suffix:

Owner Name: (First) (Last) ☐ Non-Domestic ☐ Domestic ☒ All

POD / Surface Data Report

Avg Depth to Water Report

Water Column Report

Clear Form

iWATERS Menu

Help

WATER COLUMN REPORT 08/20/2008

(quarters are 1=NW 2=NE 3=SW 4=SE)
(quarters are biggest to smallest)

POD Number	Tws	Rng	Sec	q	q	q	Zone	X	Y	Depth Well	Depth Water	Water (in feet) Column
RG 13104	29N	12W	01							70	35	35
RG 42195	29N	12W	01	2	2	2				100	40	60
RG 27250	29N	12W	02	1						85	40	45
RG 36980	29N	12W	02	1						113	40	73
RG 42665	29N	12W	13							140	105	35
SJ 03277	29N	12W	01	1	2	4				180	120	60
SJ 01031	29N	12W	04	2	1					275	172	103
SJ 01504	29N	12W	04	2	1					180	155	25
SJ 02851	29N	12W	04	2	1	1				370	310	60
SJ 03293	29N	12W	05	1	1	4				68	45	23
SJ 00881	29N	12W	06	1	2	2				137	18	119
SJ 03528	29N	12W	06	1	2	4				21	5	16
SJ 01894	29N	12W	06	1	3					29	28	1
SJ 01385	29N	12W	06	1	3	4				31	4	27
SJ 03529	29N	12W	06	1	4	1				21	5	16
SJ 03186	29N	12W	06	2	4	1				21	8	13
SJ 01662	29N	12W	06	3	3	1				25	8	17
SJ 00254	29N	12W	06	3	3	2				90	26	64
SJ 03205	29N	12W	06	3	3	4				127	118	9
SJ 01383	29N	12W	07	1						125	80	45
SJ 00121	29N	12W	07	1	1					160	90	70
SJ 03553	29N	12W	07	1	2	2				150		
SJ 03061	29N	12W	07	3	1	2				280	180	100
SJ 01566 CLW227534	29N	12W	08	3	1	2				105	60	45
SJ 01566	29N	12W	08	3	1	3				105	60	45
SJ 01839	29N	12W	10	1	4					212	175	37
SJ 03410	29N	12W	11	3	3	4				75		
SJ 00548	29N	12W	14	1	1					180	60	120
SJ 03414	29N	12W	14	1	1	2		265266	2086208	25		
SJ 01510	29N	12W	15	1	4	3				155	75	80
SJ 03569	29N	12W	15	2	1	2				150		
SJ 03370	29N	12W	15	2	2	2				166	86	80

<u>SJ 03388</u>	29N 12W 15 2 2 2			159	80	79
<u>SJ 02070</u>	29N 12W 19 3 3 4			21	6	15
<u>SJ 00567</u>	29N 12W 19 3 4 4			28	28	
<u>SJ 03564</u>	29N 12W 19 4 1 3			100		
<u>SJ 03563</u>	29N 12W 19 4 1 3			100		
<u>SJ 00657</u>	29N 12W 19 4 1 4			85	38	47
<u>SJ 03363</u>	29N 12W 19 4 3			19	3	16
<u>SJ 01070</u>	29N 12W 19 4 3 1			38	14	24
<u>SJ 03151</u>	29N 12W 19 4 3 1			50		
<u>SJ 03270</u>	29N 12W 19 4 3 2			43	24	19
<u>SJ 03255</u>	29N 12W 19 4 3 4			17	5	12
<u>SJ 00952</u>	29N 12W 19 4 4			76	40	36
<u>SJ 03372</u>	29N 12W 19 4 4 3			10	2	8
<u>SJ 00338</u>	29N 12W 20 3 3 3			28	10	18
<u>SJ 02131 S</u>	29N 12W 22 3 3 2			400		
<u>SJ 02363</u>	29N 12W 22 4 4			300	185	115
<u>SJ 01597</u>	29N 12W 24 3 2			40	15	25
<u>SJ 02555</u>	29N 12W 24 3 3			21	6	15
<u>SJ 00400</u>	29N 12W 24 3 4			83	35	48
<u>SJ 03735 POD1</u>	29N 12W 24 3 4 1			100	15	85
<u>SJ 03507</u>	29N 12W 24 3 4 1			60		
<u>SJ 03786 POD1</u>	29N 12W 24 3 4 1	265819	2077065	35	11	24
<u>SJ 02082</u>	29N 12W 25 1 1			30	3	27
<u>SJ 00938</u>	29N 12W 25 1 2			80	40	40
<u>SJ 00706</u>	29N 12W 25 1 4			49	20	29
<u>SJ 00652</u>	29N 12W 25 1 4			42	20	22
<u>SJ 01322</u>	29N 12W 25 1 4			42	20	22
<u>SJ 00617</u>	29N 12W 25 1 4 3			47	20	27
<u>SJ 01466</u>	29N 12W 25 2 4			27	14	13
<u>SJ 00570</u>	29N 12W 25 3 1			36	18	18
<u>SJ 03340</u>	29N 12W 25 3 3 3			45	12	33
<u>SJ 03173</u>	29N 12W 25 3 4 2			60	10	50
<u>SJ 03580</u>	29N 12W 25 3 4 4			20	4	16
<u>SJ 00763</u>	29N 12W 25 4 3			60	20	40
<u>SJ 02132</u>	29N 12W 25 4 3 1			40	12	28
<u>SJ 02496</u>	29N 12W 26 1 1 4			35	20	15
<u>SJ 03337</u>	29N 12W 26 1 2 2			50		
<u>SJ 03339</u>	29N 12W 26 1 2 2			50		
<u>SJ 03338</u>	29N 12W 26 1 2 2			50		
<u>SJ 00777</u>	29N 12W 26 2 1			47	20	27
<u>SJ 01109</u>	29N 12W 26 2 1 1			100	70	30
<u>SJ 01194</u>	29N 12W 26 2 4			38	12	26
<u>SJ 01954</u>	29N 12W 26 3 1			55	20	35
<u>SJ 01956</u>	29N 12W 26 3 1			50	18	32
<u>SJ 03052</u>	29N 12W 26 3 1 4			29	15	14
<u>SJ 01996</u>	29N 12W 26 3 2			75	17	58
<u>SJ 00112</u>	29N 12W 26 3 4			47	26	21
<u>SJ 01326</u>	29N 12W 26 4 2			50	27	23
<u>SJ 01802</u>	29N 12W 26 4 2			70	18	52
<u>SJ 00399</u>	29N 12W 26 4 2 2			45	25	20
<u>SJ 01802 POD2</u>	29N 12W 26 4 2 3	265547	2072216	34	11	23
<u>SJ 03789 POD1</u>	29N 12W 26 4 2 3	265592	2072287	40	14	26
<u>SJ 03325</u>	29N 12W 26 4 4 1			45	14	31
<u>SJ 03327</u>	29N 12W 26 4 4 1			95	70	25
<u>SJ 03104</u>	29N 12W 26 4 4 2			50		
<u>SJ 03329</u>	29N 12W 26 4 4 3			40	12	28
<u>SJ 03341</u>	29N 12W 26 4 4 3			50		
<u>SJ 02169</u>	29N 12W 27			36	19	17
<u>SJ 02058</u>	29N 12W 27			60	25	35

SJ 02118	29N 12W 27 1	29	6	23
SJ 02131	29N 12W 27 1 1	80		
SJ 01590	29N 12W 27 1 3	63	30	33
SJ 02654	29N 12W 27 1 3 1	62	32	30
SJ 00726	29N 12W 27 1 3 1	50	30	20
SJ 03422	29N 12W 27 1 3 2	41	31	10
SJ 01008	29N 12W 27 1 3 3	51	20	31
SJ 00827	29N 12W 27 1 3 3	55	30	25
SJ 01828	29N 12W 27 1 3 4	45	25	20
SJ 02870	29N 12W 27 1 3 4	39	24	15
SJ 00666	29N 12W 27 1 3 4	35	17	18
SJ 03384	29N 12W 27 1 3 4	41	30	11
SJ 02041	29N 12W 27 2 3	37	8	29
SJ 02074	29N 12W 27 2 3	60	25	35
SJ 01643	29N 12W 27 2 3 4	65	30	35
SJ 02274	29N 12W 27 2 3 4	47	22	25
SJ 03394	29N 12W 27 2 4 4	59	15	44
SJ 01700	29N 12W 27 3 1	87	48	39
SJ 00572	29N 12W 27 3 1	35	28	7
SJ 01728	29N 12W 27 3 1	25	11	14
SJ 01690	29N 12W 27 3 1 1	25	10	15
SJ 00904	29N 12W 27 3 1 1	32	14	18
SJ 00901	29N 12W 27 3 1 3	32	15	17
SJ 03792 POD1	29N 12W 27 3 3 1	21	10	11
SJ 03105	29N 12W 27 3 3 2	19	9	10
SJ 02183	29N 12W 27 4 1	40	26	14
SJ 02506	29N 12W 27 4 1 2	44	20	24
SJ 02502	29N 12W 27 4 1 3	40		
SJ 02640	29N 12W 27 4 1 3	31	18	13
SJ 03376	29N 12W 27 4 1 3	27	13	14
SJ 01133	29N 12W 27 4 1 4	24	7	17
SJ 02969	29N 12W 27 4 1 4	40		
SJ 01991	29N 12W 27 4 2	50	13	37
SJ 02061	29N 12W 28 4 2	39	23	16
SJ 02047	29N 12W 28 4 2	40	25	15
SJ 02658	29N 12W 28 4 2 1	42	24	18
SJ 02864	29N 12W 28 4 2 2	50		
SJ 02228	29N 12W 29 1	19	8	11
SJ 02299	29N 12W 29 1 1 3	27	7	20
SJ 00799	29N 12W 29 1 1 4	20	8	12
SJ 00786	29N 12W 29 1 1 4	21	8	13
SJ 00842	29N 12W 29 1 1 4	15	5	10
SJ 01431	29N 12W 29 1 1 4	19	7	12
SJ 03171	29N 12W 29 1 2 1	21	10	11
SJ 03167	29N 12W 29 1 2 1	21	10	11
SJ 03170	29N 12W 29 1 2 1	21	10	11
SJ 03168	29N 12W 29 1 2 1	21	10	11
SJ 03169	29N 12W 29 1 2 1	21	10	11
SJ 03634	29N 12W 29 1 2 2	18	10	8
SJ 02370	29N 12W 29 1 2 2	16	5	11
SJ 00711	29N 12W 29 1 2 4	20	8	12
SJ 00833	29N 12W 29 1 3 2	17	9	8
SJ 02497	29N 12W 29 1 3 2	17	8	9
SJ 02501	29N 12W 29 1 3 2	17	17	
SJ 00961	29N 12W 29 1 3 2			
SJ 00966	29N 12W 29 1 3 3	18	3	15
SJ 03711 POD1	29N 12W 29 1 4 1	20	8	12
SJ 01517	29N 12W 30 2 1	20	8	12
SJ 01695	29N 12W 30 2 2	13	4	9

264678 2071912

<u>SJ 00872</u>	29N 12W 30 2 2	25	8	17
<u>SJ 01442</u>	29N 12W 30 2 2	35	6	29
<u>SJ 01565</u>	29N 12W 30 2 2	27	4	23
<u>SJ 02875</u>	29N 12W 30 2 2 2	35		
<u>SJ 01677</u>	29N 12W 33 2	51	35	16
<u>SJ 02973</u>	29N 12W 33 2 1 2	130	50	80
<u>SJ 01775</u>	29N 12W 34 1 1	15		
<u>SJ 03312</u>	29N 12W 34 2 1 4	13	2	11
<u>SJ 03405</u>	29N 12W 35 2 1	54	16	38
<u>SJ 03501</u>	29N 12W 35 2 4 4	20	6	14
<u>SJ 03509</u>	29N 12W 35 2 4 4	50		
<u>SJ 03537</u>	29N 12W 35 3 1 3	35	10	25
<u>SJ 03335</u>	29N 12W 35 3 3 4			
<u>SJ 03244</u>	29N 12W 35 3 4 3	60		
<u>SJ 03451</u>	29N 12W 35 3 4 4	85	50	35
<u>SJ 02638</u>	29N 12W 35 4 1 1	21	4	17
<u>SJ 03192</u>	29N 12W 36 1 3 1	50		
<u>SJ 02830</u>	29N 12W 36 1 4 1	50		50
<u>SJ 03299</u>	29N 12W 36 2 4 3	20		
<u>SJ 03686 POD1</u>	29N 12W 36 2 4 3	41	21	20
<u>SJ 03439</u>	29N 12W 36 3 2 4	46	10	36
<u>SJ 02950</u>	29N 12W 36 4 1 3	38	11	27
<u>SJ 02849</u>	29N 12W 36 4 2 1	40	20	20
<u>SJ 02872</u>	29N 12W 36 4 2 1	15	10	5
<u>SJ 03024</u>	29N 12W 36 4 2 1	38	18	20
<u>SJ 03011</u>	29N 12W 36 4 2 1	40	20	20
<u>SJ 03007</u>	29N 12W 36 4 2 3	37	10	27
<u>SJ 02850</u>	29N 12W 36 4 2 3	65		
<u>SJ 02338</u>	29N 12W 36 4 3 2	64	40	24
<u>SJ 02633</u>	29N 12W 36 4 4 1	85	19	66

Record Count: 180

**New Mexico Office of the State Engineer
POD Reports and Downloads**

Township: Range: Sections:

NAD27 X: Y: Zone: Search Radius:

County: Basin: Number: Suffix:

Owner Name: (First) (Last) ☐ Non-Domestic ☐ Domestic ☒ All

POD / Surface Data Report

Avg Depth to Water Report

Water Column Report

Clear Form

iWATERS Menu

Help

WATER COLUMN REPORT 08/21/2008

(quarters are 1=NW 2=NE 3=SW 4=SE)
(quarters are biggest to smallest)

POD Number	Tw	Rng	Sec	q	q	q	Zone	X	Y	Depth Well	Depth Water	Water (in Column)
SJ 02643	30N	12W	02	3	3	2				195	140	55
SJ 02707	30N	12W	02	3	4	3				235	135	100
SJ 02145	30N	12W	04	1	1	1				160	110	50
SJ 02341	30N	12W	04	4	3					85	39	46
SJ 01898	30N	12W	04	4	3					140	88	52
SJ 01692	30N	12W	04	4	3					156	65	91
SJ 01798	30N	12W	04	4	3					158	70	88
SJ 01792	30N	12W	04	4	3					155	109	46
SJ 03058	30N	12W	04	4	3	3				120	48	72
SJ 03447	30N	12W	04	4	4	4				120	80	40
SJ 03767 POD1	30N	12W	10	2	4	2		265151	2121325	265	82	183
SJ 02128	30N	12W	10	3	4					140	60	80
SJ 00945	30N	12W	10	3	4					130	70	60
SJ 00421	30N	12W	10	4	4					126	43	83
SJ 00142	30N	12W	11	4	4	2				192	122	70
SJ 00651	30N	12W	11	4	4	4				193	123	70
SJ 03129	30N	12W	12	3	4	2				44	35	9
SJ 03027	30N	12W	12	3	4	3				100		
SJ 00384	30N	12W	12	4	3	2				57	20	37
SJ 03020	30N	12W	12	4	3	4				52	30	22
SJ 00643	30N	12W	12	4	4					75	51	24
SJ 03757 POD1	30N	12W	12	4	4			266123	2118278	22	12	10
SJ 00322	30N	12W	12	4	4	1				66	40	26
SJ 00888	30N	12W	13	1						81	50	31
SJ 00518	30N	12W	13	1						55	15	40
SJ 00935	30N	12W	13	1						54	10	44
SJ 00316	30N	12W	13	1	1					56	30	26
SJ 00337	30N	12W	13	1	1					43	17	26
SJ 00773	30N	12W	13	1	1	1				68	50	18
SJ 00821	30N	12W	13	1	3					42	15	27
SJ 03063	30N	12W	13	1	3	1				40	25	15
SJ 02803	30N	12W	13	2	2	2				68	43	25

<u>SJ 02114</u>	30N 12W 13	2 2 4	49		
<u>SJ 01403</u>	30N 12W 13	2 2 4	51	15	36
<u>SJ 01773</u>	30N 12W 13	3	60	25	35
<u>SJ 00299</u>	30N 12W 13	3 2	49	18	31
<u>SJ 00123</u>	30N 12W 14	1 1 1	60	38	22
<u>SJ 00854</u>	30N 12W 14	1 4	87	50	37
<u>SJ 00667</u>	30N 12W 14	2 2 4	60	45	15
<u>SJ 01161</u>	30N 12W 14	2 4	37	20	17
<u>SJ 00596</u>	30N 12W 14	3 1	72	26	46
<u>SJ 00105</u>	30N 12W 14	3 1	38	25	13
<u>SJ 00735</u>	30N 12W 14	3 1 3	50	30	20
<u>SJ 00676</u>	30N 12W 14	3 2	51	30	21
<u>SJ 00574</u>	30N 12W 14	3 2	72	50	22
<u>SJ 03318</u>	30N 12W 14	3 3 4	50		
<u>SJ 00129</u>	30N 12W 14	3 4	50	10	40
<u>SJ 00107</u>	30N 12W 14	3 4	50	15	35
<u>SJ 01674</u>	30N 12W 14	3 4	65	16	49
<u>SJ 00124</u>	30N 12W 14	3 4	55	10	45
<u>SJ 00271</u>	30N 12W 14	3 4 1	43	23	20
<u>SJ 00508</u>	30N 12W 14	3 4 2	45	6	39
<u>SJ 00458</u>	30N 12W 14	4 1	37	15	22
<u>SJ 03472</u>	30N 12W 14	4 2 1	60	8	52
<u>SJ 02739</u>	30N 12W 14	4 2 2	65	10	55
<u>SJ 03643</u>	30N 12W 14	4 2 4	40	15	25
<u>SJ 00482</u>	30N 12W 14	4 3	43	6	37
<u>SJ 00290</u>	30N 12W 14	4 3	39	8	31
<u>SJ 02168</u>	30N 12W 15		78	50	28
<u>SJ 00367</u>	30N 12W 15		95	50	45
<u>SJ 01178</u>	30N 12W 15	1 4	110	80	30
<u>SJ 03401</u>	30N 12W 15	1 4 3	180	56	124
<u>SJ 01881</u>	30N 12W 15	2	157	100	57
<u>SJ 00817</u>	30N 12W 15	2 3 4	96	53	43
<u>SJ 03108</u>	30N 12W 15	2 4 1	110	29	81
<u>SJ 03432</u>	30N 12W 15	2 4 2	165	105	60
<u>SJ 01162</u>	30N 12W 15	3	50		
<u>SJ 00145</u>	30N 12W 15	3	165	60	105
<u>SJ 00709</u>	30N 12W 15	3	52	20	32
<u>SJ 02120</u>	30N 12W 15	3	77	55	22
<u>SJ 00883</u>	30N 12W 15	3	75	35	40
<u>SJ 00416</u>	30N 12W 15	3 1	120	60	60
<u>SJ 02127</u>	30N 12W 15	3 3	55	35	20
<u>SJ 03238</u>	30N 12W 15	3 3 2	75	30	45
<u>SJ 02760</u>	30N 12W 15	3 3 2	50	21	29
<u>SJ 00928</u>	30N 12W 15	3 4	68	32	36
<u>SJ 00710</u>	30N 12W 15	3 4	90	30	60
<u>SJ 00816</u>	30N 12W 15	3 4	58	30	28
<u>SJ 00717</u>	30N 12W 15	3 4	100	60	40
<u>SJ 00684</u>	30N 12W 15	3 4	73	30	43
<u>SJ 01215</u>	30N 12W 15	3 4	60	30	30
<u>SJ 01037</u>	30N 12W 15	3 4	50	20	30
<u>SJ 00829</u>	30N 12W 15	3 4	68	30	38
<u>SJ 00714</u>	30N 12W 15	3 4	92	40	52
<u>SJ 00730</u>	30N 12W 15	3 4	90	30	60
<u>SJ 00731</u>	30N 12W 15	3 4	90	30	60
<u>SJ 00912</u>	30N 12W 15	3 4	58	35	23
<u>SJ 01793</u>	30N 12W 15	3 4	50	22	28
<u>SJ 00828 (1)</u>	30N 12W 15	3 4	43	20	23
<u>SJ 00828</u>	30N 12W 15	3 4	59	28	31
<u>SJ 01438</u>	30N 12W 15	3 4	96	66	30

SJ 00481	30N 12W 15	3 4 2			52	30	22
SJ 00516	30N 12W 15	3 4 3			55	8	47
SJ 00927	30N 12W 15	4 1 2			204	75	129
SJ 00594	30N 12W 15	4 2			145	95	50
SJ 00810	30N 12W 15	4 3 3			96	35	61
SJ 03159	30N 12W 15	4 4 2			60		
SJ 02514	30N 12W 15	4 4 4			57	25	32
SJ 01279	30N 12W 16	4 4			200	100	100
SJ 02627	30N 12W 18	1 2 2			354	250	104
SJ 03808 POD1	30N 12W 18	1 3 1	266399	2116162	42	9	33
SJ 02697	30N 12W 18	1 4 3			360	290	70
SJ 01892	30N 12W 18	1 4 4			465	420	45
SJ 01619	30N 12W 18	2 1			395	345	50
SJ 01619 X	30N 12W 18	2 1			380	350	30
SJ 02137	30N 12W 18	2 2 4			460	380	80
SJ 01737	30N 12W 18	2 3			540		
SJ 02080	30N 12W 18	2 3			370	340	30
SJ 01013	30N 12W 18	3			310	250	60
SJ 01014	30N 12W 18	3			306	250	56
SJ 01080	30N 12W 18	3 1			305	265	40
SJ 00575	30N 12W 18	3 3 1			420	390	30
SJ 01514	30N 12W 18	3 4 3			430	380	50
SJ 02035	30N 12W 18	4			500	190	310
SJ 01971	30N 12W 18	4			405	345	60
SJ 02040	30N 12W 18	4 1 4			460	400	60
SJ 02247	30N 12W 18	4 3			465	375	90
SJ 01283	30N 12W 18	4 3			425	380	45
SJ 01896	30N 12W 18	4 4			415	372	43
SJ 01809	30N 12W 18	4 4			371	317	54
SJ 00148	30N 12W 19				270	240	30
SJ 01831	30N 12W 19	3 1			244	195	49
SJ 03477	30N 12W 19	3 4 3					
SJ 00950	30N 12W 21	4 4			70	35	35
SJ 02163	30N 12W 21	4 4 4	W	424400 2174000	31	15	16
SJ 01877	30N 12W 22	1 1 2			94	66	28
SJ 01152	30N 12W 22	1 1 2			66	19	47
SJ 01297	30N 12W 22	1 2 2			67	30	37
SJ 00439	30N 12W 22	1 3			97	50	47
SJ 03087	30N 12W 22	1 3 4			40	21	19
SJ 00462	30N 12W 22	1 4			61	12	49
SJ 03056	30N 12W 22	1 4 1			88	30	58
SJ 00312	30N 12W 22	2			94	35	59
SJ 00695	30N 12W 22	2			70	29	41
SJ 00360	30N 12W 22	2 2			35	3	32
SJ 00746	30N 12W 22	2 2 2			42	6	36
SJ 01273	30N 12W 22	2 3			100	38	62
SJ 00800	30N 12W 22	2 3			79	27	52
SJ 01684	30N 12W 22	3 1			80	45	35
SJ 03424	30N 12W 22	3 2			64	24	40
SJ 03661	30N 12W 22	3 2 1			65	19	46
SJ 03289	30N 12W 22	3 2 1			70	19	51
SJ 03607	30N 12W 22	3 2 1	264817	2109564	57	33	24
SJ 03101	30N 12W 22	3 2 2			74	12	62
SJ 03662	30N 12W 22	3 2 2			63	20	43
SJ 03616	30N 12W 22	3 2 2			67	20	47
SJ 03059	30N 12W 22	3 2 2			61	24	37
SJ 03060	30N 12W 22	3 2 2			57	21	36
SJ 03500	30N 12W 22	3 3 1			56	24	32
SJ 03157	30N 12W 22	3 3 2			46	18	28

<u>SJ 01312</u>	30N	12W	22	3	4	38	20	18
<u>SJ 00569</u>	30N	12W	22	3	4	44	10	34
<u>SJ 01165</u>	30N	12W	22	3	4	42	14	28
<u>SJ 01393</u>	30N	12W	22	3	4	39	12	27
<u>SJ 03317</u>	30N	12W	22	3	4	50		
<u>SJ 02008</u>	30N	12W	22	4	1	42	7	35
<u>SJ 01614</u>	30N	12W	22	4	1	45	7	38
<u>SJ 02014</u>	30N	12W	22	4	1	45	10	35
<u>SJ 01301</u>	30N	12W	22	4	2	50	10	40
<u>SJ 00460</u>	30N	12W	22	4	2	40	3	37
<u>SJ 00224</u>	30N	12W	22	4	2	48	22	26
<u>SJ 02305</u>	30N	12W	22	4	2	41	20	21
<u>SJ 02133</u>	30N	12W	22	4	3	40	14	26
<u>SJ 00903</u>	30N	12W	22	4	3	45	10	35
<u>SJ 01464</u>	30N	12W	22	4	3	40	15	25
<u>SJ 03473</u>	30N	12W	22	4	3	40		
<u>SJ 03233</u>	30N	12W	22	4	3	42	8	34
<u>SJ 01340</u>	30N	12W	22	4	3	40	9	31
<u>SJ 01386</u>	30N	12W	22	4	3	40	12	28
<u>SJ 01860</u>	30N	12W	22	4	4	20	3	17
<u>SJ 01980</u>	30N	12W	22	4	4	20	5	15
<u>SJ 02876</u>	30N	12W	22	4	4	33	23	10
<u>SJ 03397</u>	30N	12W	22	4	4	42	5	37
<u>SJ 03038</u>	30N	12W	22	4	4	30	5	25
<u>SJ 02387</u>	30N	12W	22	4	4	16	5	11
<u>SJ 03041</u>	30N	12W	22	4	4	43	8	35
<u>SJ 01168</u>	30N	12W	23			33	13	20
<u>SJ 00869</u>	30N	12W	23	1	1	42	12	30
<u>SJ 02995</u>	30N	12W	23	1	1	62	24	38
<u>SJ 02221</u>	30N	12W	23	1	1	47	12	35
<u>SJ 03510</u>	30N	12W	23	1	1	40	3	37
<u>SJ 01035</u>	30N	12W	23	1	2	39	6	33
<u>SJ 01021</u>	30N	12W	23	1	2	35	13	22
<u>SJ 00644</u>	30N	12W	23	1	2	35	15	20
<u>SJ 00642</u>	30N	12W	23	1	2	45	12	33
<u>SJ 00449</u>	30N	12W	23	1	2			
<u>SJ 02826</u>	30N	12W	23	1	2	30		
<u>SJ 02288</u>	30N	12W	23	1	3	40	15	25
<u>SJ 00538</u>	30N	12W	23	1	4	37	6	31
<u>SJ 00537</u>	30N	12W	23	1	4	37	6	31
<u>SJ 00934</u>	30N	12W	23	1	4	31	5	26
<u>SJ 01959</u>	30N	12W	23	1	4	25	10	15
<u>SJ 00186</u>	30N	12W	23	1	4	31	4	27
<u>SJ 01750</u>	30N	12W	23	2		34	12	22
<u>SJ 02742</u>	30N	12W	23	2	1	28	10	18
<u>SJ 01074</u>	30N	12W	23	2	1	26	10	16
<u>SJ 00244</u>	30N	12W	23	2	1	40	2	38
<u>SJ 00318</u>	30N	12W	23	2	2	41	2	39
<u>SJ 02112</u>	30N	12W	23	2	2	30	5	25
<u>SJ 01461</u>	30N	12W	23	2	2	43	8	35
<u>SJ 00475</u>	30N	12W	23	2	2	40	3	37
<u>SJ 02767</u>	30N	12W	23	2	2	40	6	34
<u>SJ 02767 RPR</u>	30N	12W	23	2	2	39	2	37
<u>SJ 00856</u>	30N	12W	23	2	2	40	10	30
<u>SJ 00479</u>	30N	12W	23	2	3	24	8	16
<u>SJ 02701</u>	30N	12W	23	2	3	20	5	15
<u>SJ 02997</u>	30N	12W	23	2	3	17	5	12
<u>SJ 03770 POD1</u>	30N	12W	23	2	3	25	5	20
<u>SJ 02788</u>	30N	12W	23	2	3	45	27	18

265563 211067

SJ 00923	30N	12W	23	2	4		23	10	13
SJ 02940	30N	12W	23	2	4	1	32	19	13
SJ 03601	30N	12W	23	2	4	2	34	15	19
SJ 03657	30N	12W	23	3	2	1	21	5	16
SJ 03366	30N	12W	23	3	2	3	21	20	1
SJ 03552	30N	12W	23	3	2	3	80		
SJ 03551	30N	12W	23	3	2	4	28	10	18
SJ 00588	30N	12W	23	3	3	1	22	4	18
SJ 02921	30N	12W	23	3	3	1	23		
SJ 00588 1-EXPL	30N	12W	23	3	3	3	25	6	19
SJ 03226	30N	12W	23	3	4	3	38	10	28
SJ 03816 POD1	30N	12W	23	3	4	3	32	6	26
SJ 01276	30N	12W	23	3	4	4	18	8	10
SJ 01148	30N	12W	23	4			140	80	60
SJ 03380	30N	12W	23	4	1	1	42	7	35
SJ 03375	30N	12W	23	4	1	1	42	7	35
SJ 03664	30N	12W	23	4	1	3	22	6	16
SJ 02653	30N	12W	23	4	1	3	21	9	12
SJ 03665	30N	12W	23	4	1	3	25	6	19
SJ 03663	30N	12W	23	4	1	4	32	8	24
SJ 01513	30N	12W	23	4	2		31	7	24
SJ 01272	30N	12W	23	4	2	1	35	12	23
SJ 03506	30N	12W	23	4	2	2	40	8	32
SJ 03156	30N	12W	23	4	2	2	14	8	6
SJ 00117	30N	12W	23	4	2	3	38	20	18
SJ 00114	30N	12W	23	4	2	3	40	20	20
SJ 01381	30N	12W	23	4	3		29	10	19
SJ 00111	30N	12W	23	4	3		28	18	10
SJ 00896	30N	12W	23	4	4		40	20	20
SJ 03638	30N	12W	23	4	4	1	38	10	28
SJ 00633	30N	12W	24	1	3		38	10	28
SJ 02616	30N	12W	24	1	4		27	5	22
SJ 01682	30N	12W	24	1	4		22	4	18
SJ 01681	30N	12W	24	2	4		22	4	18
SJ 01680	30N	12W	24	2	4		22	4	18
SJ 00691	30N	12W	24	3	1		30	15	15
SJ 00686	30N	12W	24	3	1	1	20	10	10
SJ 00404	30N	12W	24	3	1	3	54	44	10
SJ 01511	30N	12W	24	3	2		60	30	30
SJ 03054	30N	12W	25	3	2	1	43	22	21
SJ 01429	30N	12W	25	4			230	150	80
SJ 03008	30N	12W	25	4	1	2	100		
SJ 03418	30N	12W	25	4	1	4	75	18	57
SJ 01427	30N	12W	25	4	3		147	70	77
SJ 03799 POD1	30N	12W	26	2	1	3	175	80	95
SJ 00429	30N	12W	26	3	3		114	40	74
SJ 02032	30N	12W	27	1	2		35	5	30
SJ 00127 X	30N	12W	27	1	2		36	15	21
SJ 00127	30N	12W	27	1	2		30	5	25
SJ 01646	30N	12W	27	1	3		23	6	17
SJ 01599	30N	12W	27	1	3		25	6	19
SJ 01617	30N	12W	27	1	3		24	4	20
SJ 01239	30N	12W	27	1	3	3	23	5	18
SJ 00963	30N	12W	27	1	4	2	106	50	56
SJ 02829	30N	12W	27	1	4	2	26	10	16
SJ 02700	30N	12W	27	2	1		21	7	14
SJ 01530	30N	12W	27	2	1		33	10	23
SJ 01694	30N	12W	27	2	1		32	6	26
SJ 01988	30N	12W	27	2	1		29	18	11

265343 2107306

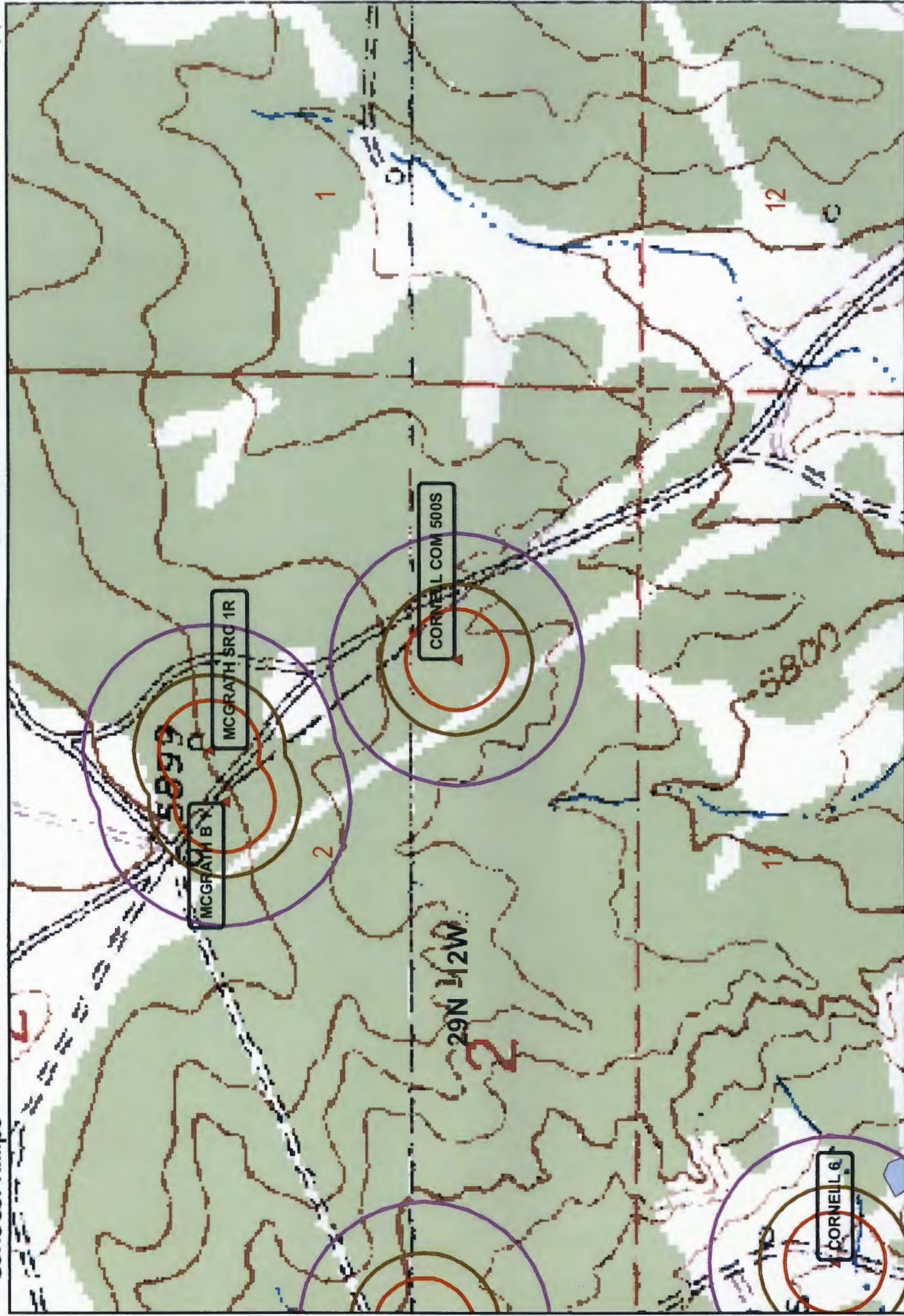
265470 2106124

<u>SJ 02620</u>	30N 12W 27 2 1 1		30	10	20
<u>SJ 03254</u>	30N 12W 27 2 1 1		35	10	25
<u>SJ 03243</u>	30N 12W 27 2 1 2		35	6	29
<u>SJ 02784</u>	30N 12W 27 2 1 2		30		
<u>SJ 00276</u>	30N 12W 27 2 1 2		35	3	32
<u>SJ 03433</u>	30N 12W 27 2 1 2		25		
<u>SJ 03496</u>	30N 12W 27 2 1 4		50	10	40
<u>SJ 03120</u>	30N 12W 27 2 3 2		70		
<u>SJ 02498</u>	30N 12W 27 3 1 1		21	5	16
<u>SJ 00844</u>	30N 12W 27 3 1 2		31	12	19
<u>SJ 03761 POD1</u>	30N 12W 27 3 3 1	264712 2103138	65	35	30
<u>SJ 03542</u>	30N 12W 27 3 3 4		8	4	4
<u>SJ 01572</u>	30N 12W 27 4		43	23	20
<u>SJ 03227</u>	30N 12W 27 4 1 3		70	55	15
<u>SJ 03641</u>	30N 12W 27 4 3 2		60	25	35
<u>SJ 00282</u>	30N 12W 28		84	52	32
<u>SJ 00122 CLW283728</u>	30N 12W 28 1 3		126	61	65
<u>SJ 01309</u>	30N 12W 28 1 3		55	32	23
<u>SJ 00122</u>	30N 12W 28 1 3 2		80	40	40
<u>SJ 02142</u>	30N 12W 28 1 4		55	35	20
<u>SJ 01275</u>	30N 12W 28 1 4 3		30	5	25
<u>SJ 02016</u>	30N 12W 28 2 1		120	56	64
<u>SJ 01129</u>	30N 12W 28 2 1 2		40	10	30
<u>SJ 03702 POD1</u>	30N 12W 28 2 2 3		30	5	25
<u>SJ 03702</u>	30N 12W 28 2 2 3		30	5	25
<u>SJ 00346</u>	30N 12W 28 2 3 1		41	15	26
<u>SJ 03796 POD1</u>	30N 12W 28 3 1 2	264258 2104657	22	5	17
<u>SJ 02571</u>	30N 12W 28 4 1 3		21	6	15
<u>SJ 03096</u>	30N 12W 28 4 3 4		125		
<u>SJ 00669</u>	30N 12W 28 4 4		70	30	40
<u>SJ 02833</u>	30N 12W 28 4 4 1		50		
<u>SJ 03688 POD1</u>	30N 12W 28 4 4 3		50	25	25
<u>SJ 03383</u>	30N 12W 28 4 4 3		50	20	30
<u>SJ 03688</u>	30N 12W 28 4 4 3		50	25	25
<u>SJ 02022</u>	30N 12W 29 3		297	100	197
<u>SJ 03187</u>	30N 12W 29 3 1 1		160	29	131
<u>SJ 02476</u>	30N 12W 29 3 2 1		225	185	40
<u>SJ 03280</u>	30N 12W 29 3 2 4		100		
<u>SJ 03358</u>	30N 12W 29 3 3 1		100	60	40
<u>SJ 03278</u>	30N 12W 29 3 3 3		120	40	80
<u>SJ 03279</u>	30N 12W 29 3 3 4		120	60	60
<u>SJ 00536</u>	30N 12W 29 4		50	28	22
<u>SJ 02309</u>	30N 12W 29 4 1 2		50	27	23
<u>SJ 02306</u>	30N 12W 29 4 4 1		44	25	19
<u>SJ 01052</u>	30N 12W 29 4 4 3		39	11	28
<u>SJ 01006</u>	30N 12W 30 1		38	16	22
<u>SJ 01314</u>	30N 12W 30 1 1 1		240	220	20
<u>SJ 01637</u>	30N 12W 30 3 3		127	52	75
<u>SJ 01632</u>	30N 12W 30 3 4 4		175	87	88
<u>SJ 02219</u>	30N 12W 30 4 4		240	80	160
<u>SJ 03361</u>	30N 12W 31 1 1 4		150		
<u>SJ 03365</u>	30N 12W 31 2 3 2		50		
<u>SJ 03145</u>	30N 12W 31 2 3 4		49	32	17
<u>SJ 03132</u>	30N 12W 31 2 3 4		58	32	26
<u>SJ 00223</u>	30N 12W 31 2 4		63	22	41
<u>SJ 00170</u>	30N 12W 31 2 4		45	20	25
<u>SJ 03236</u>	30N 12W 31 2 4 2		63	15	48
<u>SJ 03331</u>	30N 12W 31 2 4 2		67	18	49
<u>SJ 03174</u>	30N 12W 31 2 4 2		60	46	14

<u>SJ 03161</u>	30N	12W	31	2	4	3	62	47	15
<u>SJ 03252</u>	30N	12W	31	2	4	4	42	11	31
<u>SJ 03150</u>	30N	12W	31	2	4	4	53	30	23
<u>SJ 03237</u>	30N	12W	31	2	4	4	70		
<u>SJ 01236</u>	30N	12W	31	3	2		50	38	12
<u>SJ 02815</u>	30N	12W	31	3	4	2	30		
<u>SJ 03148</u>	30N	12W	31	4	1	1	56	34	22
<u>SJ 02882</u>	30N	12W	31	4	1	2	33	19	14
<u>SJ 03147</u>	30N	12W	31	4	1	2	49	28	21
<u>SJ 02867</u>	30N	12W	31	4	1	2	28	14	14
<u>SJ 03051</u>	30N	12W	31	4	1	2	40	24	16
<u>SJ 02792</u>	30N	12W	31	4	1	2	49	30	19
<u>SJ 03296</u>	30N	12W	31	4	1	2	56	30	26
<u>SJ 02877</u>	30N	12W	31	4	1	4	31	17	14
<u>SJ 03099</u>	30N	12W	31	4	1	4	34	9	25
<u>SJ 03602</u>	30N	12W	31	4	1	4	31	7	24
<u>SJ 03409</u>	30N	12W	31	4	1	4	44	24	20
<u>SJ 03725 POD1</u>	30N	12W	31	4	2	3	17	17	
<u>SJ 03235</u>	30N	12W	31	4	2	4	70	40	30
<u>SJ 03122</u>	30N	12W	31	4	3	1	29	15	14
<u>SJ 02965</u>	30N	12W	31	4	3	3	35	14	21
<u>SJ 02213</u>	30N	12W	32	1			33	13	20
<u>SJ 02166</u>	30N	12W	32	1			33	10	23
<u>SJ 02207</u>	30N	12W	32	1			25	4	21
<u>SJ 02208</u>	30N	12W	32	1			25	4	21
<u>SJ 01664</u>	30N	12W	32	1	1	1	32	16	16
<u>SJ 03610</u>	30N	12W	32	1	1	2	80	50	30
<u>SJ 03517</u>	30N	12W	32	1	1	2	60	30	30
<u>SJ 03523</u>	30N	12W	32	1	1	2	77	42	35
<u>SJ 03516</u>	30N	12W	32	1	1	2	70	35	35
<u>SJ 03511</u>	30N	12W	32	1	1	4	60	30	30
<u>SJ 03518</u>	30N	12W	32	1	1	4	60	30	30
<u>SJ 03522</u>	30N	12W	32	1	1	4	70	35	35
<u>SJ 03521</u>	30N	12W	32	1	1	4	55	25	30
<u>SJ 03520</u>	30N	12W	32	1	1	4	55	25	30
<u>SJ 03519</u>	30N	12W	32	1	1	4	55	25	30
<u>SJ 03515</u>	30N	12W	32	1	1	4	70	35	35
<u>SJ 03514</u>	30N	12W	32	1	1	4	70	35	35
<u>SJ 03513</u>	30N	12W	32	1	1	4	60	30	30
<u>SJ 03512</u>	30N	12W	32	1	1	4	60	30	30
<u>SJ 03494</u>	30N	12W	32	1	2	3	50		
<u>SJ 03221</u>	30N	12W	32	1	2	3	50	12	38
<u>SJ 03629</u>	30N	12W	32	1	2	3	60	20	40
<u>SJ 03217</u>	30N	12W	32	1	2	3	42	12	30
<u>SJ 02214</u>	30N	12W	32	1	3		30	12	18
<u>SJ 02214 X</u>	30N	12W	32	1	3		31	15	16
<u>SJ 02262</u>	30N	12W	32	1	3				
<u>SJ 02211</u>	30N	12W	32	1	3		25	11	14
<u>SJ 02220</u>	30N	12W	32	1	3		28	10	18
<u>SJ 02246</u>	30N	12W	32	1	3		19	9	10
<u>SJ 02117</u>	30N	12W	32	1	3		40	19	21
<u>SJ 02311</u>	30N	12W	32	1	3		34	11	23
<u>SJ 02177</u>	30N	12W	32	1	3		35	11	24
<u>SJ 02286</u>	30N	12W	32	1	3		40	18	22
<u>SJ 01832</u>	30N	12W	32	1	3		41	10	31
<u>SJ 03613</u>	30N	12W	32	1	3	1	70	20	50
<u>SJ 02942</u>	30N	12W	32	1	3	1	35	19	16
<u>SJ 02982</u>	30N	12W	32	1	3	1	36	10	26
<u>SJ 03009</u>	30N	12W	32	1	3	2	37	10	27

SJ 03748 POD1	30N	12W	32	1	3	3						
SJ 03190	30N	12W	32	1	3	3			25	8	17	
SJ 02371	30N	12W	32	1	3	4			31	11	20	
SJ 00190	30N	12W	32	1	4				34	15	19	
SJ 02239	30N	12W	32	2	1	2			65	17	48	
SJ 03207	30N	12W	32	2	3	2			60	30	30	
SJ 03206	30N	12W	32	2	3	2			60			
SJ 00116	30N	12W	32	2	3	3			25			
SJ 00116 S	30N	12W	32	2	3	3			25			
SJ 03606	30N	12W	32	3	4	3			67	49	18	
SJ 02908	30N	12W	32	4	2	4			50			
SJ 03779 POD1	30N	12W	32	4	2	4		263644 2098600	26	8	18	
SJ 02804	30N	12W	32	4	3	4			50			
SJ 00519	30N	12W	32	4	4	3			24	12	12	
SJ 03349	30N	12W	33	1	2	1			55			
SJ 03143	30N	12W	33	1	2	3			97	60	37	
SJ 03110	30N	12W	33	1	2	4			320	54	266	
SJ 01390	30N	12W	33	1	3				40	22	18	
SJ 01174	30N	12W	33	1	3				36	19	17	
SJ 03143 POD2	30N	12W	33	1	4	2			40	10	30	
SJ 03133	30N	12W	33	1	4	4			39	20	19	
SJ 00605	30N	12W	33	2	1	2			72	35	37	
SJ 02981	30N	12W	33	2	1	2			100	60	40	
SJ 00606	30N	12W	33	2	1	2			104	35	69	
SJ 01072	30N	12W	33	2	2				110	50	60	
SJ 01036	30N	12W	33	2	2				105	70	35	
SJ 01045	30N	12W	33	2	2				73	45	28	
SJ 03140	30N	12W	33	2	3	1			42	20	22	
SJ 00474	30N	12W	33	2	3	3			104	60	44	
SJ 03614	30N	12W	33	2	3	3			42	33	9	
SJ 00505	30N	12W	33	2	4				85	45	40	
SJ 00444	30N	12W	33	2	4				66	34	32	
SJ 01256	30N	12W	33	2	4				250	160	90	
SJ 01286	30N	12W	33	3					265	227	38	
SJ 01118	30N	12W	33	3	2				32	10	22	
SJ 00613	30N	12W	33	3	2	3			147	95	52	
SJ 02212	30N	12W	33	3	3				320	269	51	
SJ 01633	30N	12W	33	3	3				280	240	40	
SJ 00447	30N	12W	33	4	1				104	65	39	
SJ 00622	30N	12W	33	4	1	2			76	41	35	
SJ 00590	30N	12W	33	4	1	3			98	60	38	
SJ 00986	30N	12W	33	4	2				104	80	24	
SJ 01231	30N	12W	33	4	2	3			246	161	85	
SJ 00428	30N	12W	34	4	4				107	25	82	
SJ 02296	30N	12W	36	4	3				300	89	211	
SJ 02296 S	30N	12W	36	4	3	1	W	436910 2097860	300	100	200	

Record Count: 432



Wetlands data acquired from U.S. Fish and Wildlife
<http://wetlands.wms.er.usgs.gov>

Ground Water
 + iWaters
 + COP

Buffers
 200ft (orange outline)
 300ft (yellow outline)
 500ft (purple outline)
 Wetlands (blue fill)

0 500 1,000 Feet
 1:6,000

NAD_1983_StatePlane_ NMWest_FIPS_3003
 8/08

AERIAL MAP CORNELL COM 500S



Data Source
Aerial flown locally Sedgewick in 2005.

1000FT 300FT

0 500 1,000 Feet

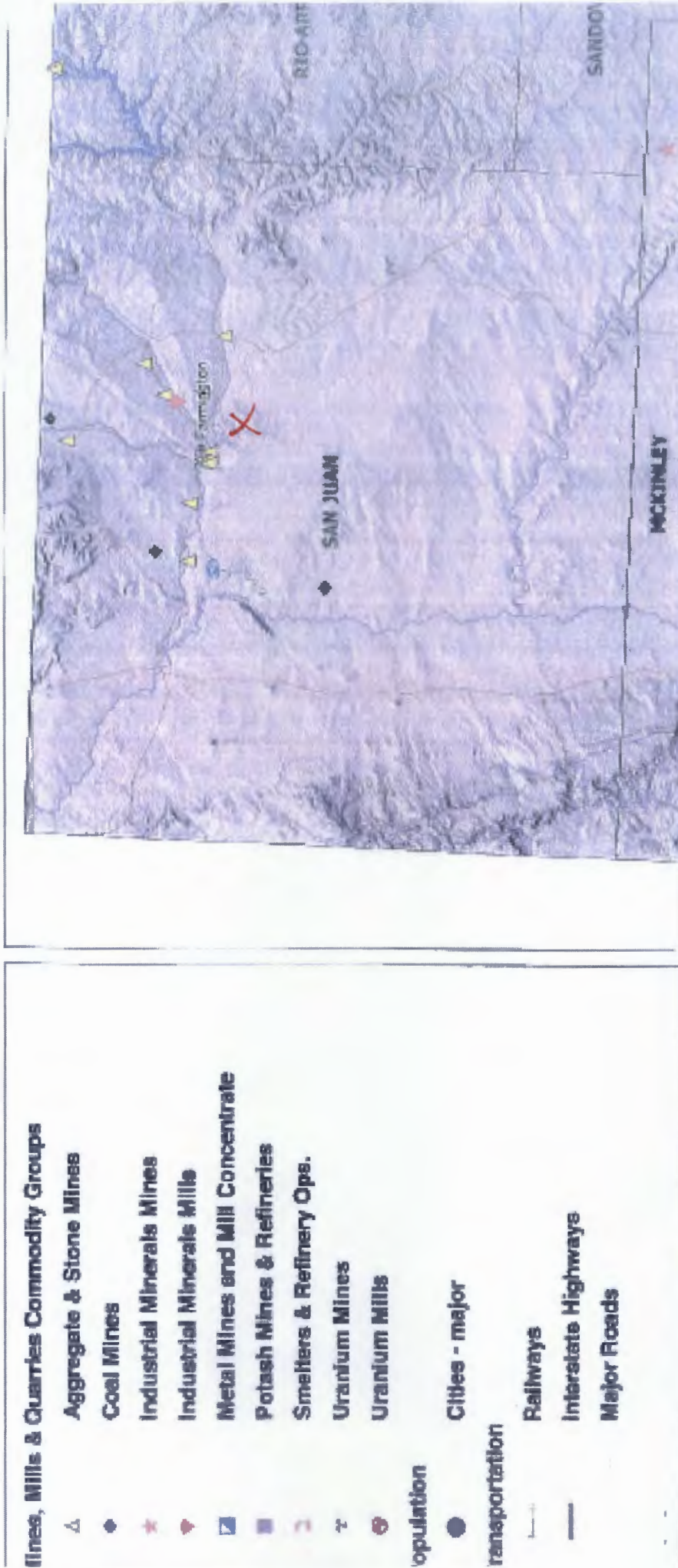
1:6,000

NAD_1983_SP
NM West_FIPS_3003
8/08

Mines, Mills and Quarries Web Map

CORNELL COM 500S

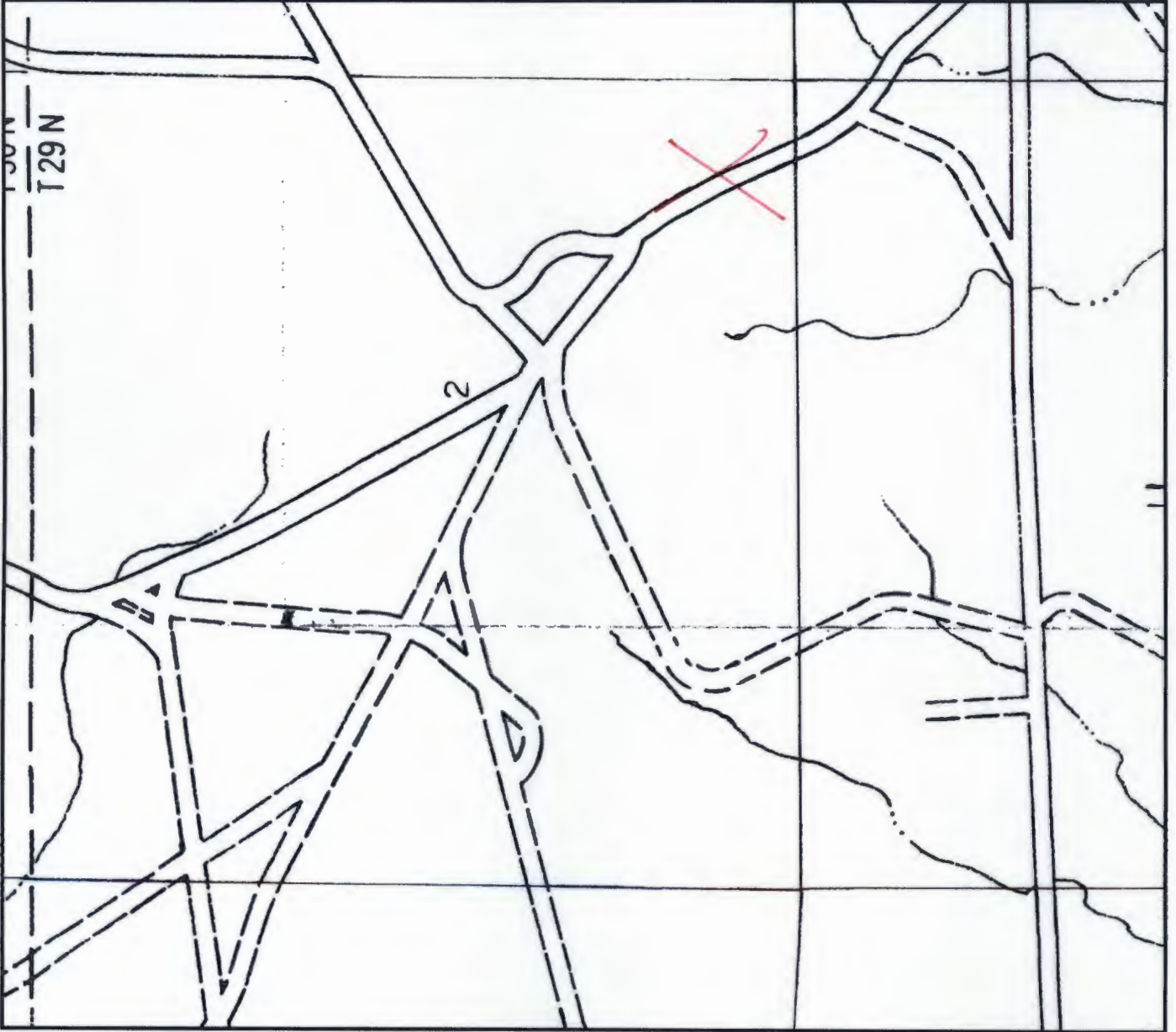
Unit Letter: P, Section: 02, Town: 029N, Range: 012W




SCALE 1 : 1,180,363



Corneil Com #5003



NATIONAL FLOOD INSURANCE PROGRAM
FIRM FLOOD INSURANCE RATE MAP
SAN JUAN COUNTY, NEW MEXICO (UNINCORPORATED AREAS)
PANEL 510 OF 1450 <small>(SEE MAP INDEX FOR PANELS NOT PRINTED)</small>
COMMUNITY-PANEL NUMBER 3500640510 C MAP REVISED: MAY 15, 2002

Federal Emergency Management Agency

This is an official copy of a portion of the above referenced flood map. It was extracted using F-MIT On-Line. This map does not reflect changes or amendments which may have been made subsequent to the date on the title block. For the latest product information about National Flood Insurance Program flood maps check the FEMA Flood Map Store at www.msc.fema.gov

CORNELL COM 500S

Site Specific Hydrogeology

A visual site inspection confirming the information contained herein was performed on the well 'CORNELL COM 500S', which is located at 36.74947 degrees North latitude and 108.06229 degrees West longitude. This location is located on the Horn Canyon 7.5' USGS topographic quadrangle. This location is in section 2 of Township 29 North Range 12 West of the Public Land Survey System (New Mexico Principal Meridian). This location is located in San Juan County, New Mexico. The nearest town is Flora Vista, located 3.2 miles to the north. The nearest large town (population greater than 10,000) is Farmington, located 8.0 miles to the west (National Atlas). The nearest highway is US Highway 64, located 3.3 miles to the south. The location is on Private land and is 678 feet from the edge of the parcel as notated in the BLM land status layer updated January 2008. This location is in the Animas, Colorado, New Mexico, Sub-basin. This location is located 1788 meters or 5864 feet above sea level and receives 10 inches of rain each year. The vegetation at this location is classified as Inter-Mountain Basins Mixed Salt Desert Scrub as per the Southwest Regional Gap Analysis Program.

The estimated depth to ground water at this point is 102 feet. This estimation is based on the data published on the New Mexico Engineer's iWaters Database website and water depth data from ConocoPhillips' cathodic wells. Groundwater data available from the NM State Engineer's iWaters Database for wells near the proposed site are attached. The nearest stream is 857 feet to the southwest and is classified by the USGS as an intermittent stream. The nearest perennial stream is named Hargis Arroyo and is 5,662 feet to the north. The nearest water body is 5,629 feet to the north. It is classified by the USGS as an intermittent lake and is 0.8 acres in size. The nearest spring is 15,628 feet to the northwest. All stream, river, water body and spring information was determined as per the USGS Hydrographic Dataset (High Resolution), downloaded 3/2008. The nearest water well is 3,961 feet to the northeast. The nearest wetland is a 0.5 acre other located 2,780 feet to the southwest. The slope at this location is 0 degrees to the south as calculated from USGS 30M National Elevation Dataset. This information is also discerned from the aerial and topographic map included. The surface geology at this location is NACIMIENTO FORMATION--Shale and sandstone with a Shale dominated formations of all ages substrate. The soil at this location is 'Gypsiorthids-Badland-Stumble complex, moderately steep' and is somewhat excessively drained and not hydric with severe erosion potential as taken from the NRCS SSURGO map unit, downloaded January 2008. The nearest underground mine is 11.3 miles to the west as indicated on the Mines, Mills and Quarries Map of New Mexico provided.

Regional Geological context:

The Nacimiento Formation is of Paleocene age (Baltz, 1967, p. 35). It crops out in a broad band inside the southern and western margins of the central basin and in a narrow band along the west face of the Nacimiento Uplift. The Nacimiento is a nonresistant unit and typically erodes to low, rounded hills or forms badland topography.

The Nacimiento Formation occurs in approximately only the southern two-thirds of the San Juan Basin where it conformably overlies and intertongues with the Ojo Alamo Sandstone (Fassett, 1974, p. 229). The Nacimiento Formation grades laterally into the main part of the Animas Formation (Fassett and Hinds, 1971, p. 34); thus, in this area, the two formations occupy the same stratigraphic interval.

Strata of the Nacimiento Formation were deposited in lakebeds in the central basin area with lesser deposition in stream channels (Brimhall, 1973, p. 201). In general, the Nacimiento consists of drab, interbedded black and gray shale with discontinuous, white, medium- to very coarse grained arkosic sandstone (Stone et al., 1983, p.30). Stone et al. indicated that the formation may contain more sandstone than commonly reported because some investigators assume the slope-forming strata in the unit area shales, whereas in many places the strata actually are poorly consolidated sandstones.

Total thickness of the Nacimiento Formation ranges from about 500 to 1,300 feet. The unit generally thickens from the basin margins toward the basin center (Steven et al., 1974). The sandstone deposits within the Nacimiento Formation are much thinner than the total thickness of the formation because their environment of deposition was localized stream channels (Brimhall, 1973, p. 201). The thickness of the combined San Jose, Animas, and Nacimiento Formations ranges from 500 to more than 3,500 feet.

Hydraulic Properties:

Reported well yields for 53 wells completed in either the Animas or Nacimiento Formations range from 2 to 90 gallons per minute and the median yield is 7.5 gallons per minute. The primary use of water from Nacimiento and Animas Formations is domestic and livestock supplies. There are no known aquifer tests for the Animas or Nacimiento Formations, but specific capacities reported for six wells range from 0.24 to 2.30 gallons per minute per foot of drawdown (Levings et al., 1990).

The Animas and Nacimiento Formations are in many ways hydrologically similar to the San Jose Formation because sands in both units produce approximately the same quantities of water. However, the greater percentage of fine materials in the Animas and Nacimiento Formations may restrict downward vertical leakage to the Ojo Alamo Sandstone or Kirtland Shale. The poorly cemented fine material is highly erodible, forms a badland terrain, and supports only spotty vegetation. These conditions are more conducive to runoff than retention of precipitation.

References:

- Baltz, E.H., 1967, Stratigraphy and regional tectonic implications of part of Upper Cretaceous rocks, east-central San Juan Basin, New Mexico: USGS Professional Paper 552, 101 p.
- Brimhall, R.M., 1973, Ground-water hydrology of Tertiary rocks of the San Juan Basin, New Mexico, in Fassett, J.E., ed., Cretaceous and Tertiary rocks of the Southern Colorado Plateau: Four Corners Geological Society Memoir, p. 197-207.
- Fassett, J.E., 1974, Cretaceous and Tertiary rocks of the eastern San Juan Basin, New Mexico and Colorado, in Guidebook of Ghost Ranch, central-northern New Mexico: New Mexico Geological Society, 25th Field Conference, p. 225-230.
- Fassett, J.E., and Hinds, J.S., 1971, Geology and fuel resources of the Fruitland Formation and Kirtland Shale of the San Juan Basin, New Mexico and Colorado: USGS Professional Paper 676, 76 p.
- Levings, G.W., Craig, S.D., Dam, W.L., Kernodle, J.M., and Thorn, C.R., 1990, Hydrogeology of the San Jose, Nacimiento, and Animas Formations in the San Juan structural basin, New Mexico, Colorado, Arizona, and Utah: USGS Hydrologic Investigations Atlas HA-720-A, 2 sheets.
- Stone, W.J., Lyford, F.P., Frenzel, P.F., Mizell, N.H., and Padgett, E.T., 1983, Hydrogeology and water resources of San Juan Basin, New Mexico: New Mexico Bureau of Mines and Mineral Resources, Hydrologic Report 6.

**Burlington Resources Oil & Gas Company, LP
San Juan Basin
Below Grade Tank Design and Construction**

In accordance with NMAC 19.15.17 the following information describes the design and construction of below grade tanks on Burlington Resources Oil & Gas Company, LP (BR) locations. This is BR's standard procedure for all below grade tanks (BGT). A separate plan will be submitted for any BGT which does not conform to this plan.

General Plan:

1. BR will design and construct a properly sized and approved BGT which will contain liquids and should prevent contamination of fresh water to protect the public health and environment.
2. BR signage will comply with 19.15.3.103 NMAC when BR is the operator. If BR is not the operator it will comply with 19.15.17.11NMAC. BR includes Emergency Contact information on all signage.
3. BR has approval to use alternative fencing that provides better protection. BR constructs fencing around the BGT using 4 foot hog wire fencing topped with two strands of barbed wire, or with a pipe top rail. A six foot chain link fence topped with three strands of barbed wire will be use if the well location is within 1000 feet of permanent residence, school, hospital, institution or church. BR ensures that all gates associated with the fence are closed and locked when responsible personnel are not onsite.
4. BR will construct a screened, expanded metal covering, on the top of the BGT.
5. BR shall ensure that a below-grade tank is constructed of materials resistant to the below-grade tank's particular contents and resistant to damage from sunlight as shown on design drawing and specification sheet.
6. The BR below-grade tank system shall have a properly constructed foundation consisting of a level base free of rocks, debris, sharp edges or irregularities to prevent punctures, cracks or indentations of the liner or tank bottom as shown on design drawing.
7. BR shall operate and install the below-grade tank to prevent the collection of surface water run-on. BR has built in shut off devices that do not allow a below-grade tank to overflow. BR constructs berms and corrugated retaining walls at least 6" above ground to keep from surface water run-on entering the below grade tank as shown on the design plan.
8. BR will construct and use a below-grade tank that does not have double walls. The below-grade tank's side walls will be open for visual inspection for leaks, the below-grade tank's bottom is elevated a minimum of six inches above the underlying ground surface and the below-grade tank is underlain with a geomembrane liner to divert leaked liquid to a location that can be visually inspected.

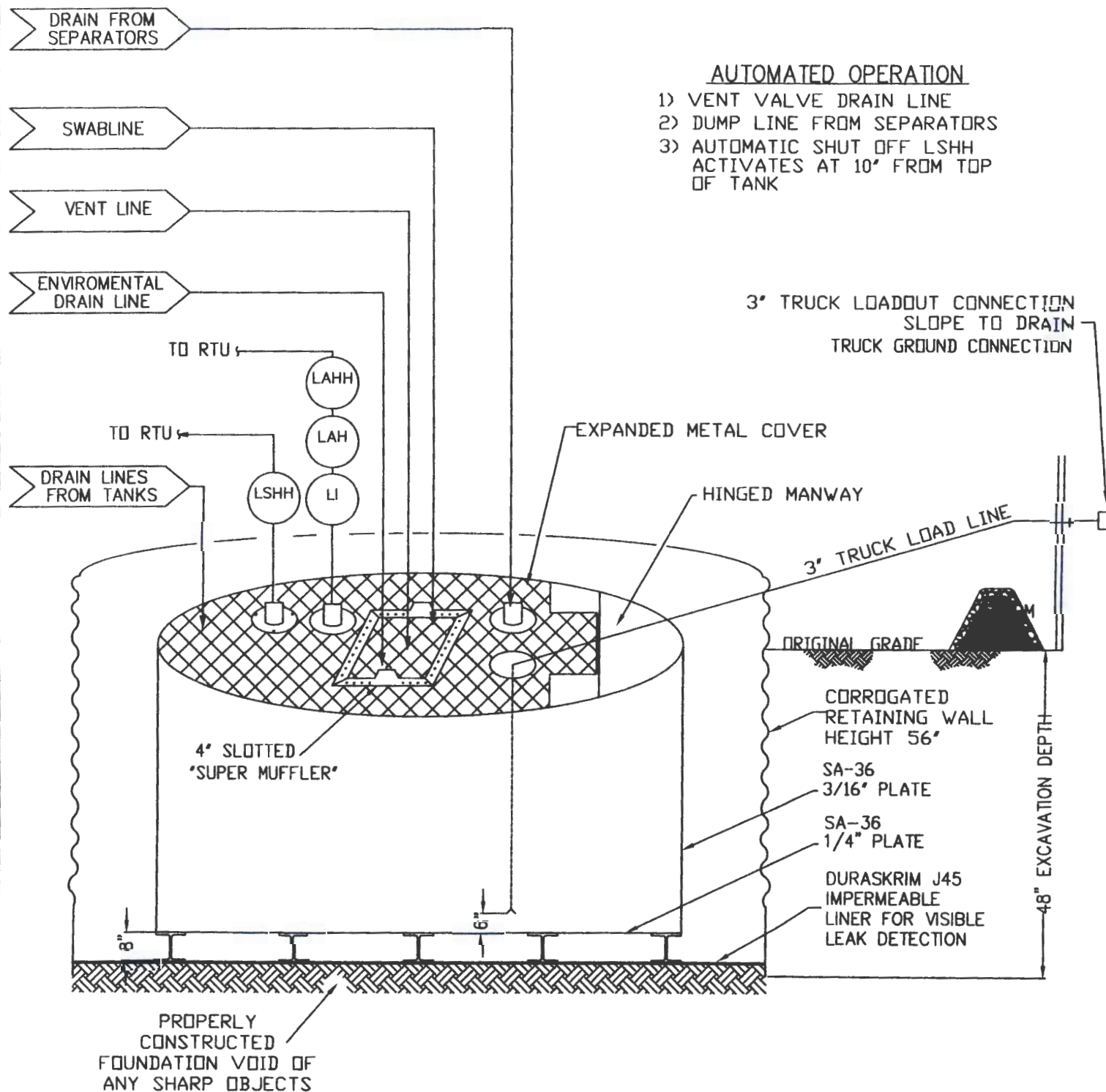
9. BR has equipped the below-grade tanks with the ability to detect high level in the tank and provide alarm notification and shutdown process streams into the tank. Once high level is detected RTU logic closes the inlet separator sales valve and does not permit vent valve to open. This shutdown of the sales valve and gagging of the vent valves prevents any hydrocarbon process streams from entering the pit tank once a high level is detected. Furthermore, an electronic page is sent to the BR MSO for that well site and to the designated contract "Water-Hauling" Company indicating a high level and that action must be taken to address this alarm. The environmental drain line from BR's compressor skid under normal operating conditions is in the open position. The environmental drain line is in place to capture any collected rain water or spilled lubricants from our compressor skids. The swab drain line is a manually operated drain and by normal operating procedures is in the closed position. The tank drain line is also a manually operated drain and during normal operations it is in the closed position.
10. The geomembrane liner consists of a 45-mil flexible LLDPE material manufactured by Raven Industries as J45BB. This product is a four layer reinforced laminated containing no adhesives. The outer layers consist of a high strength polyethylene film manufactured using virgin grade resins and stabilizers for UV resistance in exposed applications. The J45BB is reinforced with 1300 denier (minimum) tri-directional scrim reinforcement. It exceeds ASTM D3083 standard by 10%. J45BB has a warranty for 20 years from Raven Industries and is attached. It is typically used in Brine Pond, Oilfield Pit liner and other industrial applications. The manufacture specific sheet is attached and the design attached displays the proper installation of the liner.
11. The general specification for design and construction are attached in the BR document.

MANUAL OPERATION

- 1) PRODUCTION TANKS DRAINLINE
- 2) SWABLINE DRAIN LINE
- 3) ENVIROMENTAL DRAIN LINE FROM COMPRESSOR SKID

AUTOMATED OPERATION

- 1) VENT VALVE DRAIN LINE
- 2) DUMP LINE FROM SEPARATORS
- 3) AUTOMATIC SHUT OFF LSHH ACTIVATES AT 10" FROM TOP OF TANK



ConocoPhillips

San Juan Business Unit

PRODUCED WATER PIT TANK

OPEN TOP GRAVITY FLOW TANK
INTERNALLY COATED WITH
12-14 MILS AMERON AMERCOAT 385

DURA-SKRIM®

J30, J36 & J45

PROPERTIES	TEST METHOD	J30BB		J36BB		J45BB	
		Min. Roll Averages	Typical Roll Averages	Min. Roll Averages	Typical Roll Averages	Min. Roll Averages	Typical Roll Averages
Appearance		Black/Black		Black/Black		Black/Black	
Thickness	ASTM D 5199	27 mil	30 mil	32 mil	36 mil	40 mil	45 mil
Weight Lbs Per MSF (oz/yd ²)	ASTM D 5261	126 lbs (18.14)	140 lbs (20.16)	151 lbs (21.74)	168 lbs (24.19)	189 lbs (27.21)	210 lbs (30.24)
Construction		**Extrusion laminated with encapsulated tri-directional scrim reinforcement					
Ply Adhesion	ASTM D 413	16 lbs	20 lbs	19 lbs	24 lbs	25 lbs	31 lbs
1" Tensile Strength	ASTM D 7003	88 lbf MD 63 lbf DD	110 lbf MD 79 lbf DD	90 lbf MD 70 lbf DD	113 lbf MD 87 lbf DD	110 lbf MD 84 lbf DD	138 lbf MD 105 lbf DD
1" Tensile Elongation @ Break % (Film Break)	ASTM D 7003	550 MD 550 DD	750 MD 750 DD	550 MD 550 DD	750 MD 750 DD	550 MD 550 DD	750 MD 750 DD
1" Tensile Elongation @ Peak % (Scrim Break)	ASTM D 7003	20 MD 20 DD	33 MD 33 DD	20 MD 20 DD	30 MD 31DD	20 MD 20 DD	36 MD 36 DD
Tongue Tear Strength	ASTM D 5884	75 lbf MD 75 lbf DD	97 lbf MD 90 lbf DD	75 lbf MD 75 lbf DD	104 lbf MD 92 lbf DD	100 lbf MD 100 lbf DD	117 lbf MD 118 lbf DD
Grab Tensile	ASTM D 7004	180 lbf MD 180 lbf DD	218 lbf MD 210 lbf DD	180 lbf MD 180 lbf DD	222 lbf MD 223 lbf DD	220 lbf MD 220 lbf DD	257 lbf MD 258 lbf DD
Trapezoid Tear	ASTM D 4533	120 lbf MD 120 lbf DD	146 lbf MD 141 lbf DD	130 lbf MD 130 lbf DD	189 lbf MD 172 lbf DD	160 lbf MD 160 lbf DD	193 lbf MD 191 lbf DD
* Dimensional Stability	ASTM D 1204	<1	<0.5	<1	<0.5	<1	<0.5
Puncture Resistance	ASTM D 4833	50 lbf	64 lbf	65 lbf	83 lbf	80 lbf	99 lbf
Maximum Use Temperature		180° F	180° F	180° F	180° F	180° F	180° F
Minimum Use Temperature		-70° F	-70° F	-70° F	-70° F	-70° F	-70° F

MD = Machine Direction
DD = Diagonal Directions



Note: Minimum Roll Averages are set to take into account product variability in addition to testing variability between laboratories.

*Dimensional Stability Maximum Value

**DURA-SKRIM J30BB, J36BB & J45BB are a four layer reinforced laminate containing no adhesives. The outer layers consist of a high strength polyethylene film manufactured using virgin grade resins and stabilizers for UV resistance in exposed applications. DURA-SKRIM J30BB, J36BB & J45BB are reinforced with a 1300 denier (minimum) tri-directional scrim reinforcement.

Note: RAVEN INDUSTRIES MAKES NO WARRANTIES AS TO THE FITNESS FOR A SPECIFIC USE OR MERCHANTABILITY OF PRODUCTS REFERRED TO, no guarantee of satisfactory results from reliance upon contained information or recommendations and disclaims all liability for resulting loss or damage.

PLANT LOCATION

Sioux Falls, South Dakota

SALES OFFICE

P.O. Box 5107
Sioux Falls, SD 57117-5107
(605) 335-0174
(605) 331-0333 FAX
800-635-3456

RAVEN
INDUSTRIES

08/06

RAVEN INDUSTRIES INC. EXPOSED GEOMEMBRANE LIMITED WARRANTY

Raven Industries Inc. warrants Dura-Skrim J30BB, J36BB, and J45BB to be free from manufacturing defects and to be able to withstand normal exposure to sunlight for a period of 20 years from the date of sale for normal use in approved applications in the U.S and Canada, excluding Hawaii. This warranty is effective for products sold and shipped from January 1, 2008 to December 31, 2008. These dates will be updated prior to December 31, 2008.

This Limited Warranty does not include damages or defects in the Raven geomembrane resulting from acts of God, casualty or catastrophe including but not limited to: earthquakes, floods, piercing hail, or tornadoes. The term "normal use" as used herein does not include, among other things improper handling during transportation, unloading, storage or installation, the exposure of Raven geomembranes to harmful chemicals, atypical atmospheric conditions, abuse of Raven geomembranes by machinery, equipment or people; improper site preparation or covering materials, excessive pressures or stresses from any source or improper application or installation. Raven geomembrane material warranty is intended for commercial use only and is not in effect for the consumer as defined in the Magnuson Moss Warranty or any similar federal, state, or local statutes. The parties expressly agree that the sale hereunder is for commercial or industrial use only.

Should defects or premature loss of use within the scope of the above Limited Warranty occur, Raven Industries Inc. will, at its option, repair or replace the Raven geomembrane on a pro-rata basis at the then current price in such manner as to charge the Purchaser/User only for that portion of the warranted life which has elapsed since purchase of the material. Raven Industries Inc. will have the right to inspect and determine the cause of any alleged defect in the Raven geomembrane and to take appropriate steps to repair or replace the Raven geomembrane if a defect exists which is covered under this warranty. This Limited Warranty extends only to Raven's geomembrane, and does not extend to the installation service of third parties nor does it extend to materials furnished or installed by others in connection with the intended use of the Raven geomembranes.

Any claim for any alleged breach of this warranty must be made in writing, by certified mail, to the General Manager of Engineered Films Division of Raven Industries Inc. within ten (10) days of becoming aware of the alleged defect. Should the required notice not be given, the defect and all warranties are waived by the Purchaser, and Purchaser shall not have any rights under this warranty. Raven Industries Inc. shall not be obligated to perform repairs or replacements under this warranty unless and until the area to be repaired or replaced is clean, dry, and unencumbered. This includes, but is not limited to, the area made available for repair and/or replacement of Raven geomembrane to be free from all water, dirt, sludge, residuals and liquids of any kind. If after inspection it is determined that there is no claim under this Limited Warranty, Purchaser shall reimburse Raven Industries Inc. for its costs associated with the site inspection.

In the event the exclusive remedy provided herein fails in its essential purpose, and in that event only, the Purchaser shall be entitled to a return of the purchase price for so much of the material as Raven Industries Inc. determines to have violated the warranty provided herein. Raven Industries Inc. shall not be liable for direct, indirect, special, consequential or incidental damages resulting from a breach of this warranty including, but not limited to, damages for loss of production, lost profits, personal injury or property damage. Raven Industries Inc. shall not be obligated to reimburse Purchaser for any repairs, replacement, modifications or alterations made by Purchaser unless Raven Industries Inc. specifically authorized, in writing, said repairs, replacements, modifications or alteration in advance of them having been made. Raven Industry's liability under this warranty shall in no event exceed the replacement cost of the material sold to the Purchaser for the particular installation in which it failed.

Raven Industries Inc. neither assumes nor authorizes any person other than the undersigned of Raven Industries Inc. to assume for it any other or additional liability in connection with the Raven geomembrane made on the basis of the Limited Warranty. The Limited Warranty on the Raven geomembrane herein is given in lieu of all other possible material warranties, either expressed or implied, and by accepting delivery of the material; Purchaser waives all other possible warranties, except those specifically given. This Limited Warranty may only be modified by written document mutually executed by Owner and Raven Industries Inc.

Limited Warranty is extended to the purchaser/owner and is non-transferable and non-assignable; i.e., there are no third-party beneficiaries to this warranty.

Purchaser acknowledges by acceptance that the Limited Warranty given herein is accepted in preference to any and other possible materials warranties.

THIS LIMITED WARRANTY SHALL BE GOVERNED BY SOUTH DAKOTA LAW AND VENUE FOR ALL LEGAL PROCEEDINGS IN CONNECTION WITH THIS LIMITED WARRANTY SHALL BE IN MINNEHAHA COUNTY, SOUTH DAKOTA. RAVEN INDUSTRIES INC. MAKES NO WARRANTY OF ANY KIND OTHER THAN THAT GIVEN ABOVE AND HEREBY DISCLAIMS ALL WARRANTIES, BOTH EXPRESSED OR IMPLIED, OF MERCHANTABILITY AND FITNESS FOR A PARTICULAR PURPOSE. THIS IS THE ONLY WARRANTY THAT APPLIES TO THE MATERIALS REFERRED TO HEREIN AND RAVEN INDUSTRIES INC. DISCLAIMS ANY LIABILITY FOR ANY WARRANTIES GIVEN BY ANY OTHER PERSON OR ENTITY, EITHER WRITTEN OR ORAL.

RAVEN INDUSTRIES' WARRANTY BECOMES AN OBLIGATION OF RAVEN INDUSTRIES INC. TO PERFORM UNDER THE WARRANTY ONLY UPON
RECEIPT OF FINAL PAYMENT AND EXECUTION BY A DULY AUTHORIZED OFFICER OF RAVEN INDUSTRIES INC.

Burlington Resources Oil & Gas Company, LP
San Juan Basin
Below Grade Tank Maintenance and Operating Plan .

In accordance with Rule 19.15.17 the following information describes the operation and maintenance of Below Grade Tank (BGT) on Burlington Resources Oil & Gas Company, LP (BR) locations. This is BR's standard procedure for all BGT. A separate plan will be submitted for any BGT which does not conform to this plan.

General Plan:

1. BR will operate and maintain a BGT to contain liquids and solids and maintain the integrity of the liner, liner system and secondary containment system to prevent contamination of fresh water and protect public health and environment. BR will accomplish this by performing an inspection on a monthly basis, installing cathodic protection, and automatic overflow shutoff devices as seen on the design plan.
2. BR will not discharge into or store any hazardous waste in the BGT.
3. BR shall operate and install the below-grade tank to prevent the collection of surface water run-on. BR has built in shut off devices that do not allow a below-grade tank to overflow. BR constructs berms and corrugated retaining walls at least 6" above ground to keep from surface water run-on entering the below grade tank as shown on the design plan.
4. As per 19.17.15.12 Subsection D, Paragraph 3, BR will inspect the below-grade tank at least monthly reviewing several items which include 1) containment berms adequate and no oil present, 2) tanks had no visible leaks or sign of corrosion, 3) tank valves, flanges, and hatches had no visible leaks and 4) no evidence of significant spillage of produced liquids. In addition, BR's multi-skilled operators (MSOs) are required to visit each well location once per week. If detected on either inspection, BR shall remove any visible or measurable layer of oil from the fluid surface of a below-grade tank in an effort to prevent significant accumulation of oil overtime. The written record of the monthly inspections will include the items listed above and will be maintained for five years.
5. BR shall require and maintain a 10" adequate freeboard to prevent overtopping of the below-grade tank.
6. If the below grade tank develops a leak, or if any penetration of the pit liner or below grade tank, occurs below the liquid's surface, then BR shall remove all liquid above the damage or leak line within 48 hours. BR shall notify the appropriate district office. BR shall repair or replace the pit liner or below grade tank, within 48 hours of discovery. If the below grade tank or pit liner does not demonstrate integrity, BR shall promptly remove and install a below grade tank or pit liner that complies with Subsection I of 19.15.17.11 NMAC. BR shall notify the appropriate district office of a discovery of leaks less than 25 barrels as required pursuant to Subsection B of 19.15.3.116 NMAC shall be reported within twenty-four (24) hours of discovery of leaks greater than 25 barrels. In addition, immediate verbal notification pursuant to Subsection B, Paragraph (1), and Subparagraph (d) of 19.15.3.116 NMAC shall be reported to the division's Environmental Bureau Chief.

**Burlington Resources Oil & Gas Company, LP
San Juan Basin
Below Grade Tank Closure Plan**

In accordance with Rule 19.15.17.13 NMAC the following information describes the closure requirements of Below Grade Tanks (BGTs) on Burlington Resources Oil & Gas Company, LP locations hereinafter known as BR locations. This is BR's standard procedure for all BGTs. A separate plan will be submitted for any BGT which does not conform to this plan.

General Requirements:

1. BR shall close a below-grade tank within the time periods provided in Subsection A of 19.15.17.13 NMAC. This will include a) below-grade tanks that do not meet the requirements of Paragraphs (1) through (4) of Subsection I of 19.15.17.11 NMAC or is not included in Paragraph (5) of Subsection I of 19.15.17.11 NMAC within five years, if not retrofitted to comply with Paragraphs (1) through (4) of Subsection I of 19.15.17.11 NMAC; b) permitted below-grade tanks within 60 days of cessation of the below-grade tank's operation., or c) an earlier date that the division requires because of imminent danger to fresh water, public health or the environment. For any closure, BR will file the C144 Closure Report as required.
2. BR shall remove liquids and sludge from a below-grade tank prior to implementing a closure method and shall dispose of the liquids and sludge in a division-approved facility. The facilities to be used will be Basin Disposal (Permit #NM-01-005) and Envirotech Land Farm (Permit #NM-01-011). The liner after being cleaned well (Subsection D, Paragraph 1, Subparagraph (m) of 19.15.9.712 NMAC) will be disposed of at the San Juan County Regional Landfill located on CR 3100.
3. BR will receive prior approval to remove the below-grade tank and dispose of it in a division-approved facility or recycle, reuse, or reclaim it in a manner that the appropriate division district office approves. Documentation of how the below-grade tank was disposed of or recycled will be provided in the closure report.
4. If there is any on-site equipment associated with a below-grade tank, then BR shall remove the equipment, unless the equipment is required for some other purpose.
5. BR shall test the soils beneath the below-grade tank to determine whether a release has occurred. BR shall collect, at a minimum, a five point, composite sample; collect individual grab samples from any area that is wet, discolored or showing other evidence of a release; and analyze for BTEX, TPH and chlorides to demonstrate that the benzene concentration, as determined by EPA SW-846 methods 8021B or 8260B or other EPA method that the division approves, does not exceed 0.2 mg/kg; total BTEX concentration, as determined by EPA SW-846 methods 8021B or 8260B or other EPA method that the division approves, does not exceed 50 mg/kg; the TPH concentration, as determined by EPA method 418.1 or other EPA method that the division approves, does not exceed 100 mg/kg; and the chloride concentration, as determined by EPA method 300.1 or other EPA method that the division approves, does not exceed 250 mg/kg, or the background concentration, whichever is greater. BR shall notify the division of its results on form C-141.
6. If BR or the division determines that a release has occurred, then BR shall comply with 19.15.3.116 NMAC and 19.15.1.19 NMAC, as appropriate.

7. If the sampling program demonstrates that a release has not occurred or that any release does not exceed the concentrations specified in Paragraph (4) of Subsection E of 19.15.17.13 NMAC, then BR shall backfill the excavation with compacted, non-waste containing, earthen material; construct a division-prescribed soil cover; recontour and re-vegetate the site.
8. Notice of Closure will be given prior to closure to the Aztec Division office between 72 hours and one week via email or verbally. The notification of closure will include the following:
 - i. Operator's name
 - ii. Location by Unit Letter, Section, Township, and Range. Well name and API number.
9. The surface owner shall be notified of BR's closing of the below-grade tank prior to closure as per the approved closure plan via certified mail, return receipt requested.
10. Re-contouring of location will match fit, shape, line, form and texture of the surrounding. Re-shaping will include drainage control, prevent ponding, and prevent erosion. Natural drainages will be unimpeded and water bars and/or silt traps will be place in areas where needed to prevent erosion on a large scale. Final re-contour shall have a uniform appearance with smooth surface, fitting the natural landscape.
11. BR shall seed the disturbed areas the first growing season after the operator closes the pit. Seeding will be accomplished via drilling on the contour whenever practical or by other division-approved methods. BLM stipulated seed mixes will used on federally jurisdicted lands and division-approved seed mixtures (administratively approved if required) will be utilized on all State or private lands. Vegetative cover will equal 70% of the native perennial vegetative cover (un-impacted) consisting of at least three native plant species, including at least one grass, but not including noxious weeds, and maintain that cover through two successive growing seasons. If alternate seed mix is required by the state, private owner or tribe, it will be implemented with administrative approval if needed. BR will repeat seeding or planting will be continued until successful vegetative growth occurs.
12. A minimum of four feet of cover shall be achieved and the cover shall include one foot of suitable material to establish vegetation at the site, or the background thickness of topsoil, whichever is greater.
13. All closure activities will include proper documentation and be available for review upon request and will be submitted to OCD within 60 days of closure of the below-grade tank. Closure report will be filed on C-144 and incorporate the following:
 - Soil Backfilling and Cover Installation
 - Re-vegetation application rates and seeding techniques
 - Photo documentation of the site reclamation
 - Confirmation Sampling Results
 - Proof of closure notice