

NEW MEXICO OIL CONSERVATION COMMISSION
WELL LOCATION AND ACREAGE DEDICATION PLAT

Form C-102
Supersedes C-129
Effective 1-1-65

All distances must be from the outer boundaries of the section.

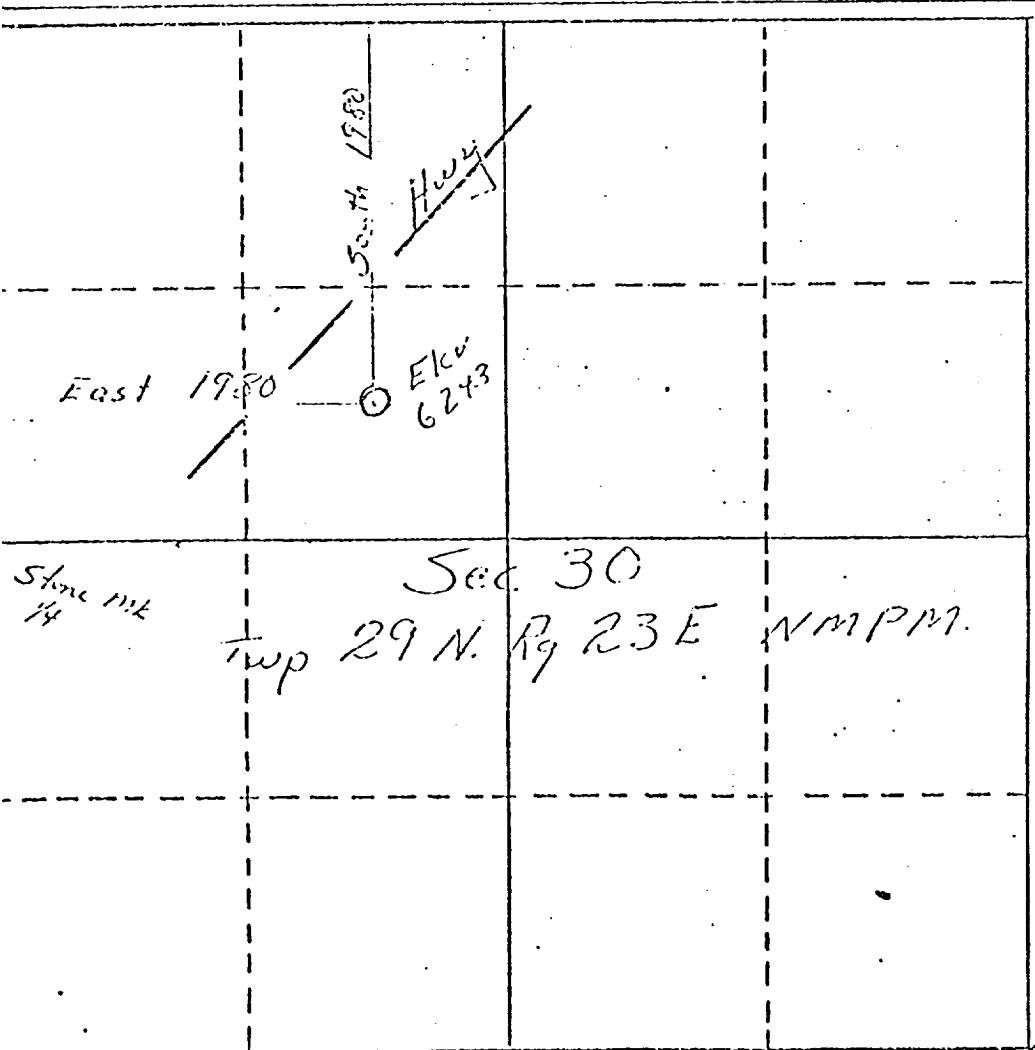
Leaseholder Bell Western Corp. & LeClair-Westwood, Inc., Agent		Lessee Annie Bell		Well No. #1
Section 30	Township 29N	Range 23E	County Colfax	
Location of Well: 1,950 feet from the North line and 1,950 feet from the West line				
Producing Formation Dakota-Morrison	Pool Wildcat		Dedicated Acreage: 100 Acres	

1. Outline the acreage dedicated to the subject well by colored pencil or hatchure marks on the plat below.
2. If more than one lease is dedicated to the well, outline each and identify the ownership thereof (both as to working interest and royalty).
3. If more than one lease of different ownership is dedicated to the well, have the interests of all owners been consolidated by communitization, unitization, force-pooling, etc?

Yes No If answer is "yes," type of consolidation Not Applicable

If answer is "no," list the owners and tract descriptions which have actually been consolidated. (Use reverse side of this form if necessary.) _____

No allowable will be assigned to the well until all interests have been consolidated (by communitization, unitization, forced-pooling, or otherwise) or until a non-standard unit, eliminating such interests, has been approved by the Commission.



CERTIFICATION	
I hereby certify that the information contained herein is true and complete to the best of my knowledge and belief.	
Name <i>V. R. Gordon</i>	
Position <i>Production Engineer</i>	
Company <i>LeClair-Westwood Inc</i>	
Date <i>January 3, 1974</i>	
I hereby certify that the well location shown on this plat was plotted from field notes of actual surveys made by me or under my supervision, and that the same is true and correct to the best of my knowledge and belief.	
Date Surveyed <i>Oct 22, 1977</i>	
Registered Professional Engineer and/or Land Surveyor <i>Bert L. Mann</i>	
Certificate No. <i>N.M. 4002</i>	