

NEW MEXICO OIL CONSERVATION COMMISSION  
Santa Fe, New Mexico

NOTICE OF INTENTION TO DRILL OR RECOMPLETE

Notice must be given to the District Office of the Oil Conservation Commission and approval obtained before drilling or recompletion begins. If changes in the proposed plan are considered advisable, a copy of this notice showing such changes will be returned to the tender. Submit this notice in QUINTUPPLICATE. One copy will be returned following approval. See additional instructions in Rules and Regulations of the Commission.

1755 Glenarm, Denver, Colorado (Place) January 25, 1955 (Date)

OIL CONSERVATION COMMISSION  
SANTA FE, NEW MEXICO

**ILLEGIBLE**

Gentlemen:

You are hereby notified that it is our intention to commence the (Drilling) ~~(Recompletion)~~ of a well to be known as  
CONTINENTAL OIL COMPANY  
(Company or Operator)

St. Louis Rocky Mountain (Lease), Well No. 6, in P (Unit) The well is

located 660 feet from the South line and 660 feet from the

East line of Section 26, T. 30N, R. 22E, NMPM.

(GIVE LOCATION FROM SECTION LINE) Wildcat Pool, Colfax County

If State Land the Oil and Gas Lease is No. \_\_\_\_\_  
If patented land the owner is St. Louis, Rocky Mountain & Pacific Co.  
Address \_\_\_\_\_

We propose to drill well with drilling equipment as follows: Rotary rig will be used to T. D.

The status of plugging bond is blanket plugging bond is in effect.

Drilling Contractor \_\_\_\_\_

We intend to complete this well in the Todilto formation at an approximate depth of 3,800 feet.

CASING PROGRAM

We propose to use the following strings of Casing and to cement them as indicated:

Size of Hole	Size of Casing	Weight per Foot	New or Second Hand	Depth	Sacks Cement
15"	10 3/4"	32.75	New	at least 2.5'	150
7 7/8"	5 1/2"	14 1/2	New	3800'	100

If changes in the above plans become advisable we will notify you immediately.

ADDITIONAL INFORMATION (If recompletion give full details of proposed plan of work.)

Collect samples at 10' intervals from surface to T.D.

Approved January 31, 1955, 19\_\_\_\_  
Except as follows:

OIL CONSERVATION COMMISSION

By *[Signature]*  
Oil & Gas Inspector Dist. #4  
Title \_\_\_\_\_

Sincerely yours,

CONTINENTAL OIL COMPANY  
(Company or Operator)

By *[Signature]*

Position District Superintendent  
Send Communications regarding well to

Name H. D. Roberts

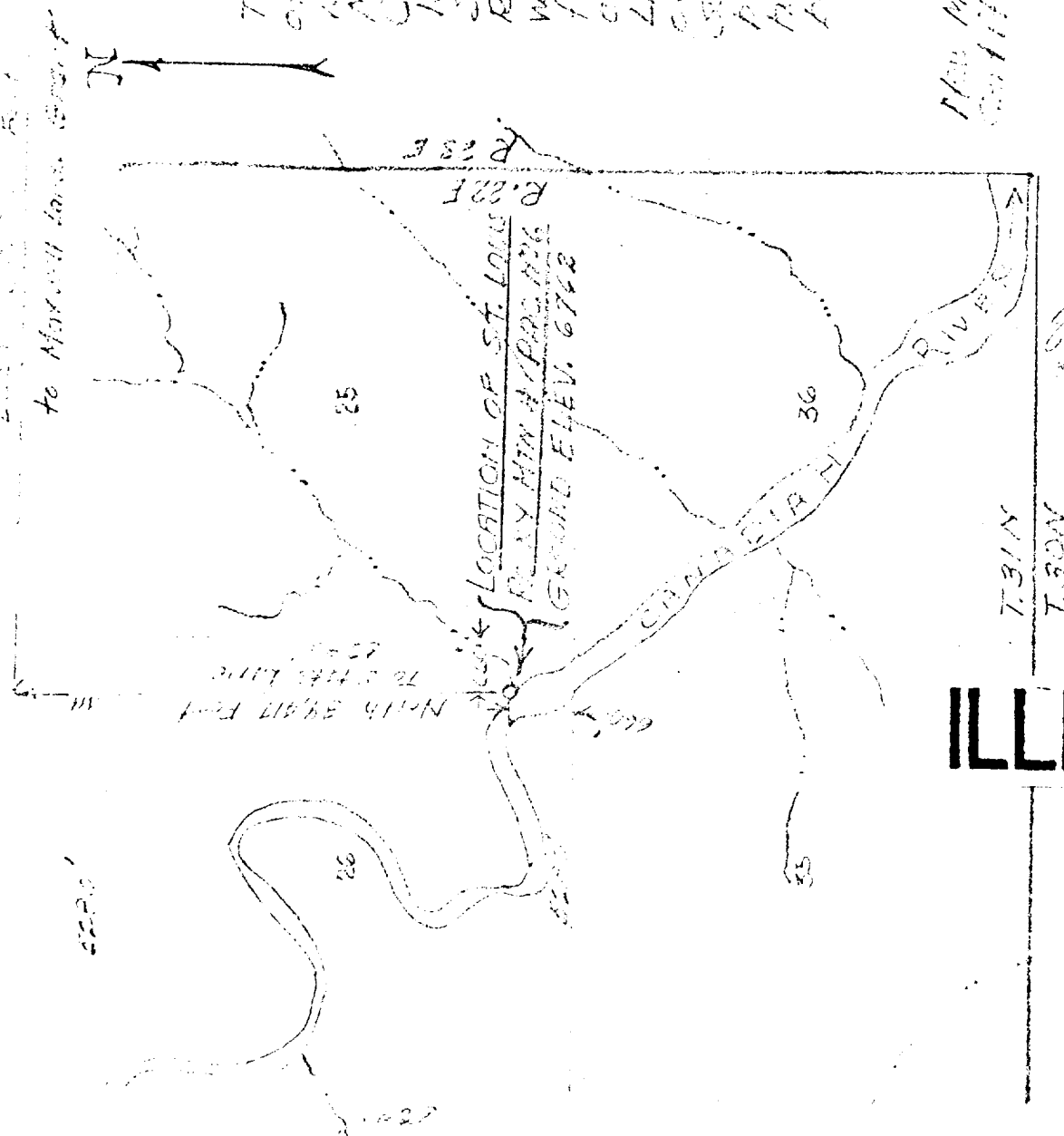
Address 1755 Glenarm  
Denver, Colorado

CERTIFICATE

This plat shows the true position of Continental Oil Co. Oil Well known as St. Louis #1 in Section 26, T. 22 N., R. 22 E. The well is 60 feet west of the east line and 19.817 feet south of the north line of the March 11 Land Grab Line. The ground elevation on the well is 6762 above sea level. The bear will vary by 1-20-55 and I hereby certify that this is the true and correct.

H. H. Halden

New Mexico  
 Certificate No. 1905 Registered Surveyor



CONTINENTAL OIL COMPANY  
**PRODUCTION DEPARTMENT**

DRAWN	SCALE	FILE NO.
CHECKED	DATE	
APPROVED	SHEET	OF

LOCATION PLAT  
 OF

**ILLEGIBLE**

