

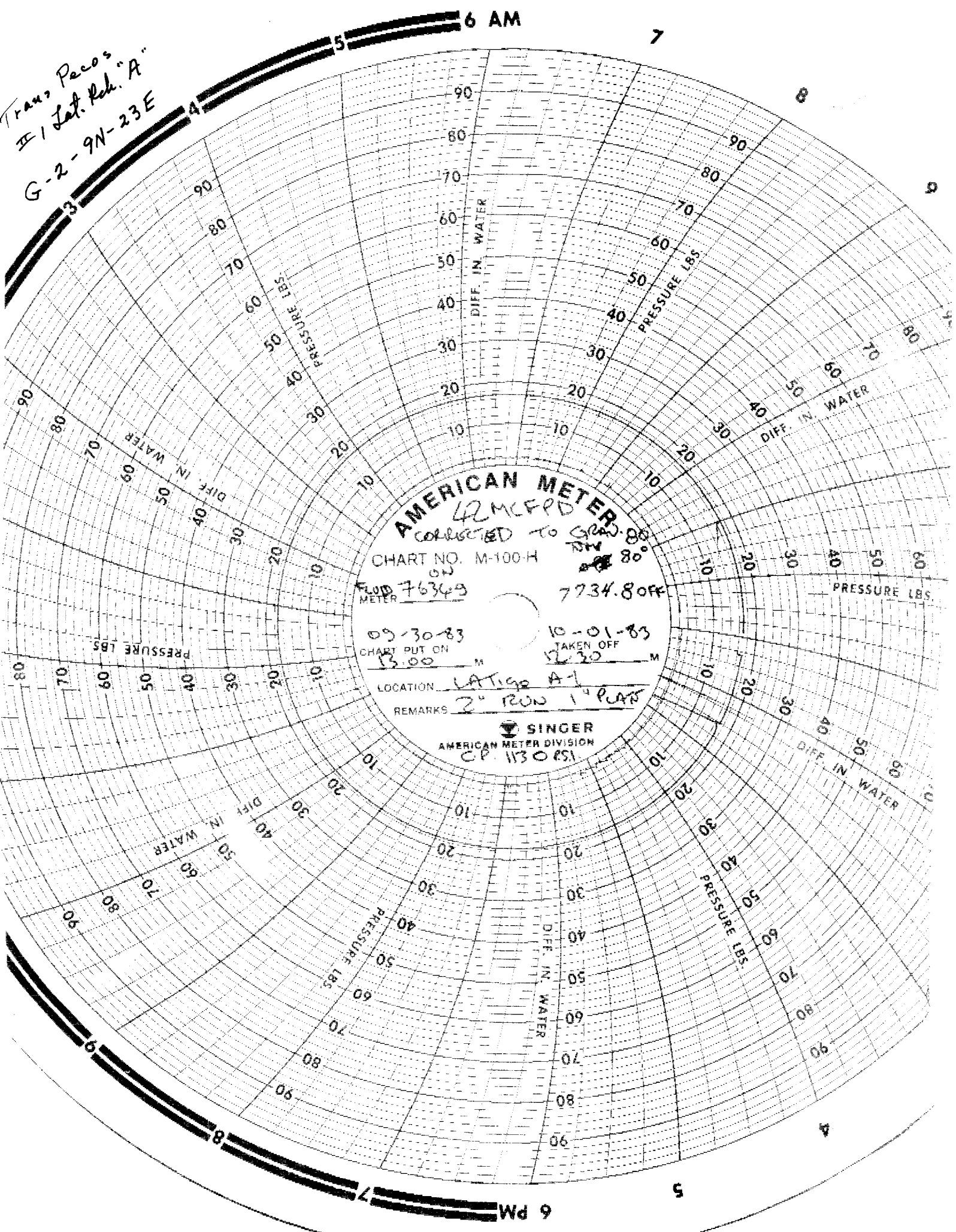
Trans Pecos
#1 Lat. Reh. "A"
G-2-9N-23E

6 AM

7

8

9



AMERICAN METER
42 MCFPD

CONNECTED TO GRAV. 80

CHART NO. M-100-H

ON
METER 76349

7734.8 OFF

09-30-83

10-01-83

CHART PUT ON
13.00 M

TAKEN OFF
12.30 M

LOCATION LAT. 92 A1

REMARKS 2" ROW 1" PLANT

SINGER
AMERICAN METER DIVISION
CP. 1130 PSI

6 PM

5

4

7

8

9