

NEW MEXICO OIL CONSERVATION COMMISSION  
WELL LOCATION AND ACREAGE DEDICATION PLAT

Form C-102  
Supersedes C-128  
Effective 1-1-65

All distances must be from the outer boundaries of the Section.

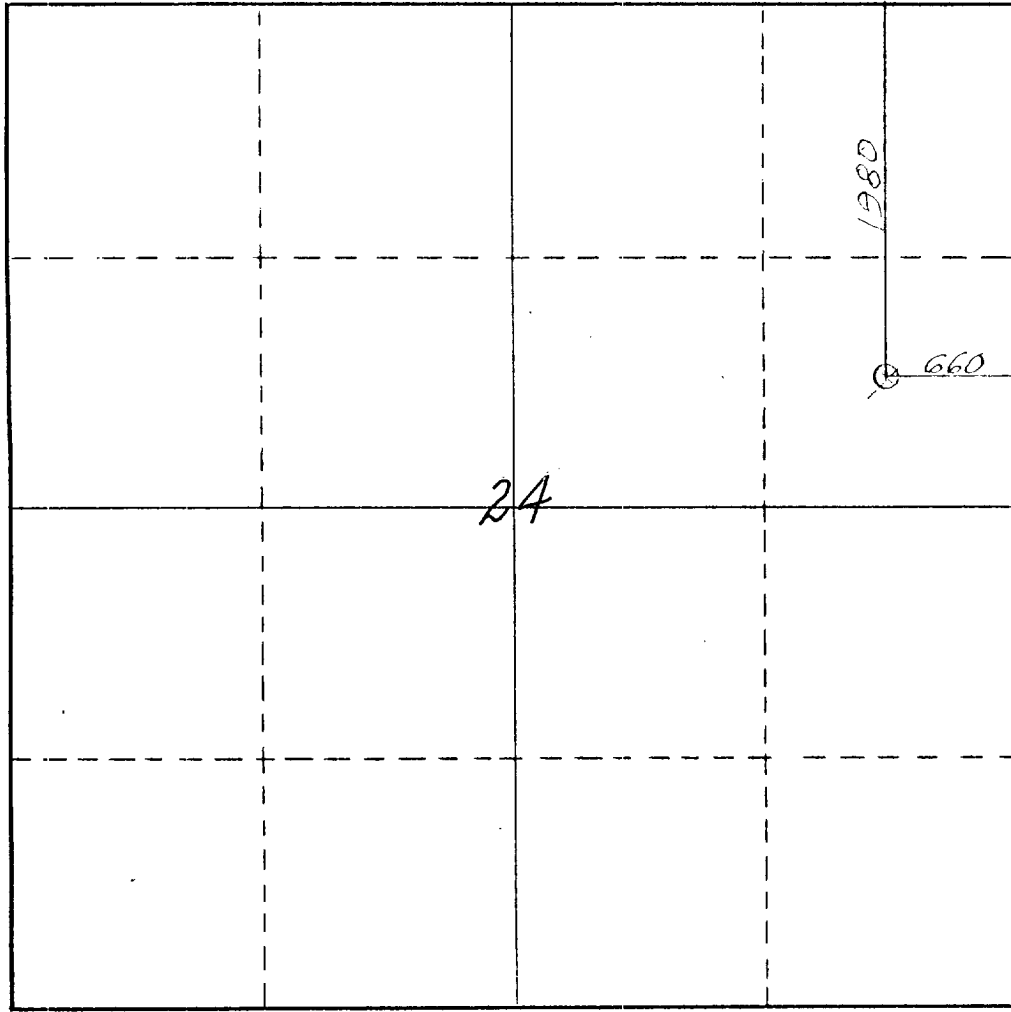
Operator <b>TRIO PETRO INC.</b>		Lease <b>HAROLD DANIELS</b>			Well No. <b>1</b>
Unit Letter <b>H</b>	Section <b>24</b>	Township <b>22 N</b>	Range <b>21 E</b>	County <b>Mora</b>	
Actual Footage Location of Well: <b>1980</b> feet from the <b>North</b> line and <b>660</b> feet from the <b>East</b> line					
Ground Level Elev. <b>6205</b>	Producing Formation <b>Dakota</b>		Pool <b>Wagon Mound</b>	Dedicated Acreage: <b>160</b> Acres	

- Outline the acreage dedicated to the subject well by colored pencil or hachure marks on the plat below.
- If more than one lease is dedicated to the well, outline each and identify the ownership thereof (both as to working interest and royalty).
- If more than one lease of different ownership is dedicated to the well, have the interests of all owners been consolidated by communitization, unitization, force-pooling, etc?

Yes  No If answer is "yes," type of consolidation \_\_\_\_\_

If answer is "no," list the owners and tract descriptions which have actually been consolidated. (Use reverse side of this form if necessary.) \_\_\_\_\_

No allowable will be assigned to the well until all interests have been consolidated (by communitization, unitization, forced-pooling, or otherwise) or until a non-standard unit, eliminating such interests, has been approved by the Commission.



CERTIFICATION

I hereby certify that the information contained herein is true and complete to the best of my knowledge and belief.

*W E Bakke Jr*

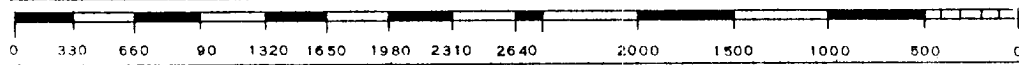
Name <b>W.E. Bakke Jr.</b>
Position <b>Vice President</b>
Company <b>TRIO PETRO INC.</b>
Date <b>December 23, 1976</b>

I hereby certify that the well location shown on this plat was plotted from field notes of actual surveys made by me or under my supervision, and that the same is true and correct to the best of my knowledge and belief.

Date Surveyed <b>Dec 16, 1976</b>
Registered Professional Engineer and/or Land Surveyor

*Charles L. Hudson*

Certificate No. <b>W.S. Lic. # 1489</b>
--



COUNTY	MORA	FIELD	Wildcat	STATE	NM
OPR	BAKKE, W. E., JR.			API	30-033-20017
NO	1	LEASE	Daniels, Harold	MAP	
	Sec 24, T22N, R21E			CO-ORD	
	1980' NFL, 660' FEL of Sec				12-1-11 <sup>1</sup> NM
	Approx. 32 mi NE/Mora			SPD	2-6-77
				CMP	10-4-77

CSC 10 3/4" at 30' Set 7" at 956' w/150 sx	WELL CLASS: INIT WF FINWF ELEV L & S			
	FORMATION	DATUM	FORMATION	DATUM
	TD	1034' (DKOT)		PBI

DRY & ABANDONED

CONTR	OPRS ELEV	6205' GL	PD	680' CT
-------	-----------	----------	----	---------

F.R. 1-10-77  
(Dakota)  
12-3-77 AMEND OPERATOR: Formerly reported as Trio Petro,  
Inc.  
11-28-77 TD 1034'; Dry & Abandoned  
Had 3-4' gas flare while drlg @ 989'  
PB to 985'  
Swbd wtr w/show gas (956-85')  
LOG TOP: Dakota 961'  
12-3-77 COMPLETION ISSUED

12-1-11 NM  
IC 30-033-70003-77

