

NEW MEXICO OIL CONSERVATION COMMISSION
WELL LOCATION AND ACREAGE DEDICATION PLAT

JUL 19 1982

Form C-102
Supersedes C-128
Effective 1-1-65

All distances must be from the outer boundaries of the Section

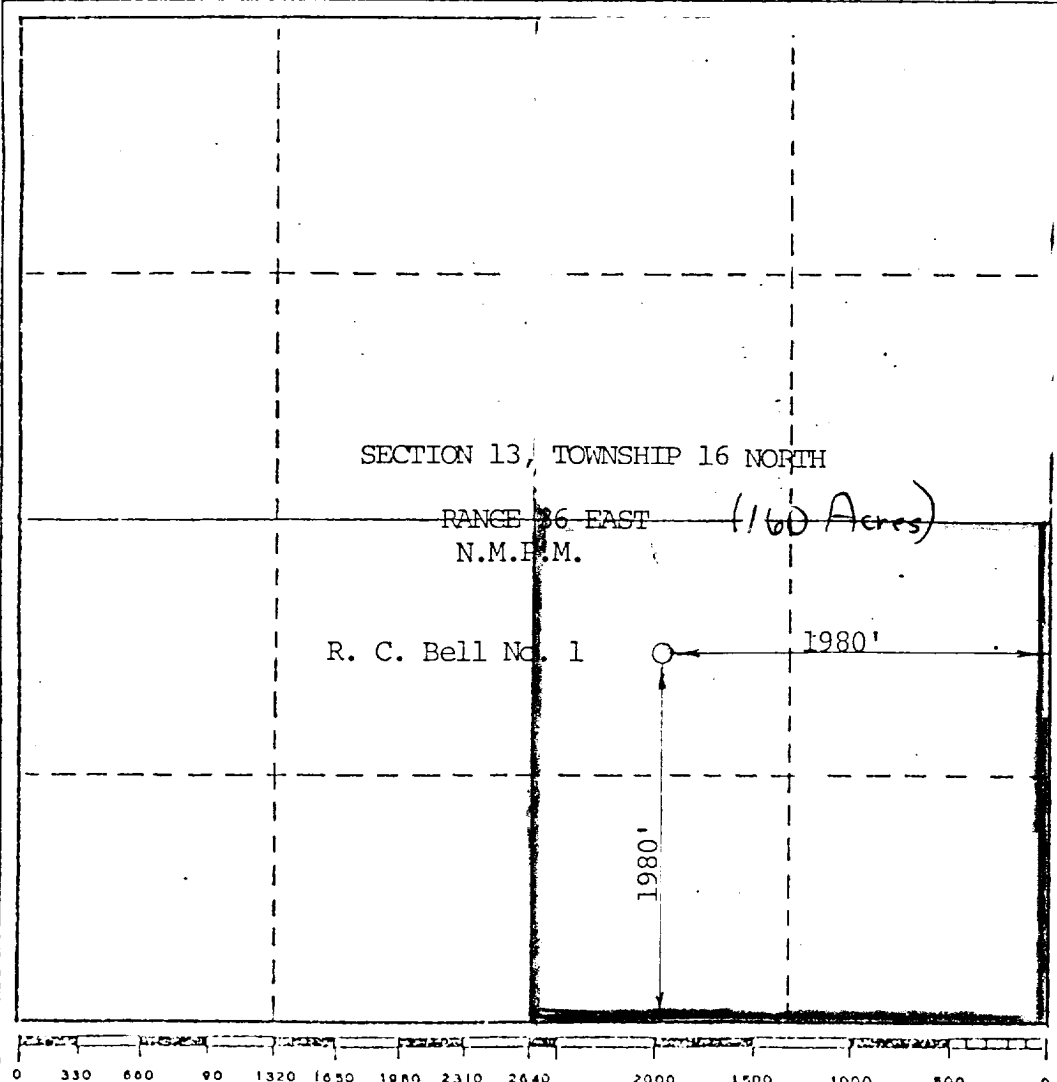
Operator SUN EXPLORATION & PRODUCTION CO.		Lease R. C. Bell			Well No. SANTA FE 1	
Unit Letter J	Section 13	Township 16 North	Range 36 East	County Quay		
Actual Footage Location of Well: 1980 feet from the South line and 1980 feet from the East line						
Ground Level Elev. 4187.7	Producing Formation Tubb		Pool Wildcat		Dedicated Acreage: 160 Acres	

1. Outline the acreage dedicated to the subject well by colored pencil or hachure marks on the plat below.
2. If more than one lease is dedicated to the well, outline each and identify the ownership thereof (both as to working interest and royalty).
3. If more than one lease of different ownership is dedicated to the well, have the interests of all owners been consolidated by communitization, unitization, force-pooling, etc?

Yes No If answer is "yes," type of consolidation _____

If answer is "no," list the owners and tract descriptions which have actually been consolidated. (Use reverse side of this form if necessary.) _____

No allowable will be assigned to the well until all interests have been consolidated (by communitization, unitization, forced-pooling, or otherwise) or until a non-standard unit, eliminating such interests, has been approved by the Commission.



CERTIFICATION

I hereby certify that the information contained herein is true and complete to the best of my knowledge and belief.

Dee Ann Kemp
Name
Dee Ann Kemp
Position
Accounting Asst. II
Company
Sun Exploration & Production Co.
Date
7-16-82

SECTION 13, TOWNSHIP 16 NORTH
RANGE 36 EAST (160 Acres)
N.M.P.M.

R. C. Bell No. 1

1980'

1980'

I hereby certify that the oil location shown on this plat was plotted from field notes of actual *7475* made by me or under my supervision, and that the same is true and correct to the best of my knowledge and belief.

JOHN N. WILSON
NEW MEXICO
REGISTERED PROFESSIONAL LAND SURVEYOR

Date Surveyed
June 17, 1982

Registered Professional Engineer and/or Land Surveyor
John N. Wilson

Certificate No.
7475