

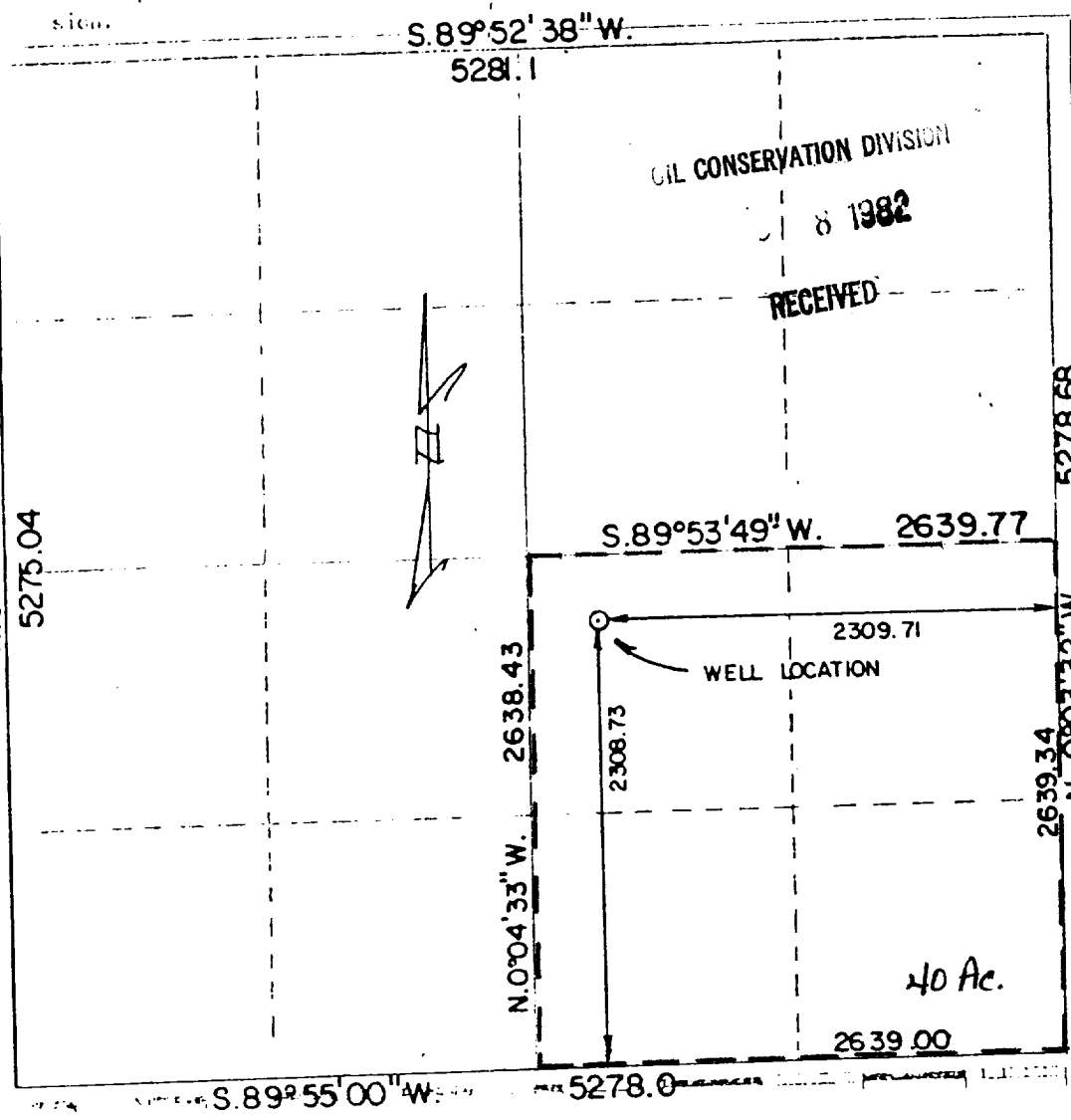
NEW MEXICO OIL CONSERVATION COMMISSION
WELL LOCATION AND ACREAGE DEDICATION PLAT

Form C-107
Supersedes C-128
Effective 1-1-65

All distances must be from the outer boundaries of the Section

TRITON OIL & GAS CORP.		Smith		Well No.	1
J	15	11N	33E	QUAY	
2308.73	SOUTH		2309.71	EAST	
3891.08	Santa Rosa		Wildcat	40	

- Outline the acreage dedicated to the subject well by colored pencil or hatchure marks on the plat below.
 - If more than one lease is dedicated to the well, outline each and identify the ownership thereof (both as to working interest and royalty).
 - If more than one lease of different ownership is dedicated to the well, have the interests of all owners been consolidated by communitization, unitization, forced-pooling, etc?
 - Yes No If answer is "yes," type of consolidation _____
 - If answer is "no," list the owners and tract descriptions which have actually been consolidated. (Use reverse side of this form, if necessary.) _____
- No allowable will be assigned to the well until all interests have been consolidated (by communitization, unitization, forced-pooling, or otherwise) or until a non-standard unit, eliminating such interests, has been approved by the Commission.



CERTIFICATION

I hereby certify that the information contained herein is true and complete to the best of my knowledge and belief.

Lee Washburn
Materials Coordinator
Company
Triton Oil & Gas Corp.
Date
December 2, 1982

I hereby certify that the well location shown on this plat was plotted from field notes of actual surveys made by me or under my supervision, and that the same is true and correct to the best of my knowledge and belief.

Date Surveyed
11/8/82

Registered Professional Engineer
and/or Land Surveyor
Robert J. Laidig
Certificate No.
2221