

UNITED STATES
DEPARTMENT OF THE INTERIOR
GEOLOGICAL SURVEY

(Other instructions on reverse side)

Budget Bureau No. 42-R1425.

API # 30-061-20014

APPLICATION FOR PERMIT TO DRILL, DEEPEN, OR PLUG BACK

1a. TYPE OF WORK
 DRILL DEEPEN PLUG BACK

b. TYPE OF WELL
 OIL WELL GAS WELL OTHER Wildcat
 SINGLE ZONE MULTIPLE ZONE

2. NAME OF OPERATOR
 REESE AND JONES

3. ADDRESS OF OPERATOR
 20 First Plaza, Suite 402, Albuquerque, NM 87102

4. LOCATION OF WELL (Report location clearly and in accordance with any State requirements.*)
 At surface 660 FNL & 2310 FWL Unit C
 At proposed prod. zone SAME

14. DISTANCE IN MILES AND DIRECTION FROM NEAREST TOWN OR POST OFFICE*
 27 miles west of Los Lunas, N.M.

16. DISTANCE FROM PROPOSED* LOCATION TO NEAREST PROPERTY OR LEASE LINE, FT. (Also to nearest drlg. unit line, if any) 660'
 16. NO. OF ACRES IN LEASE 1880

18. DISTANCE FROM PROPOSED LOCATION* TO NEAREST WELL, DRILLING, COMPLETED, OR APPLIED FOR, ON THIS LEASE, FT. NONE
 19. PROPOSED DEPTH 3500

21. ELEVATIONS (Show whether DF, RT, GR, etc.)
 5956 ungraded ground

5. LEASE DESIGNATION AND SERIAL NO.
 NM 11728
 6. IF INDIAN, ALLOTTEE OR TRIBE NAME
 7. UNIT AGREEMENT NAME
 8. FARM OR LEASE NAME
 NZ
 9. WELL NO.
 3
 10. FIELD AND POOL, OR WILDCAT
 Wildcat
 11. SEC., T., R., M., OR BLK. AND SURVEY OR AREA
 22-6N-3W-NMPM
 12. COUNTY OR PARISH 13. STATE
 Valencia NM

17. NO. OF ACRES ASSIGNED TO THIS WELL
 40.00

20. ROTARY OR CABLE TOOLS
 Rotary

22. APPROX. DATE WORK WILL START*
 January 15, 1980

23. PROPOSED CASING AND CEMENTING PROGRAM

SIZE OF HOLE	SIZE OF CASING	WEIGHT PER FOOT	SETTING DEPTH	QUANTITY OF CEMENT
10 3/4	8 5/8	32	200	Cmt. to circulate to surface
7 7/8	5 1/2	14	3500 TD	200 sxs.

Plan to spud 10 3/4" hole and drill to 215 feet and set 200 feet of 8 5/8" casing with sufficient cement to circulate to surface. Drill 7 7/8" hole to 3500 feet or depth sufficient to test the Pennsylvanian formation and run appropriate logs. If production is indicated, will run 5 1/2" casing to total depth, cement with 200 sxs, perforate and stimulate if required. Will run 2 3/8" tubing for production string.

10" Schaffer Double Gate Hydraulic BOP tested to 3000 psi will be on well during all drilling operations.

EIVE

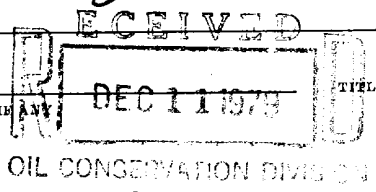
C 03 1979

IN ABOVE SPACE DESCRIBE PROPOSED PROGRAM: If proposal is to deepen or plug back, give data on present productive zone and proposed new productive zone. If proposal is to drill or deepen directionally, give pertinent data on subsurface locations and measured and true vertical depths. Give blowout preventer program, if any.

24. SIGNED Morris B. Jones TITLE Morris B. Jones, Engineer DATE November 27, 1979

(This space for Federal or State office use)
 PERMIT NO. _____ APPROVAL DATE _____

APPROVED BY _____ TITLE _____ DATE _____
 CONDITIONS OF APPROVAL, IF ANY



OIL CONSERVATION DIVISION
 SANTA FE, NM
 *See Instructions On Reverse Side

All distances must be from the outer boundaries of the Section.

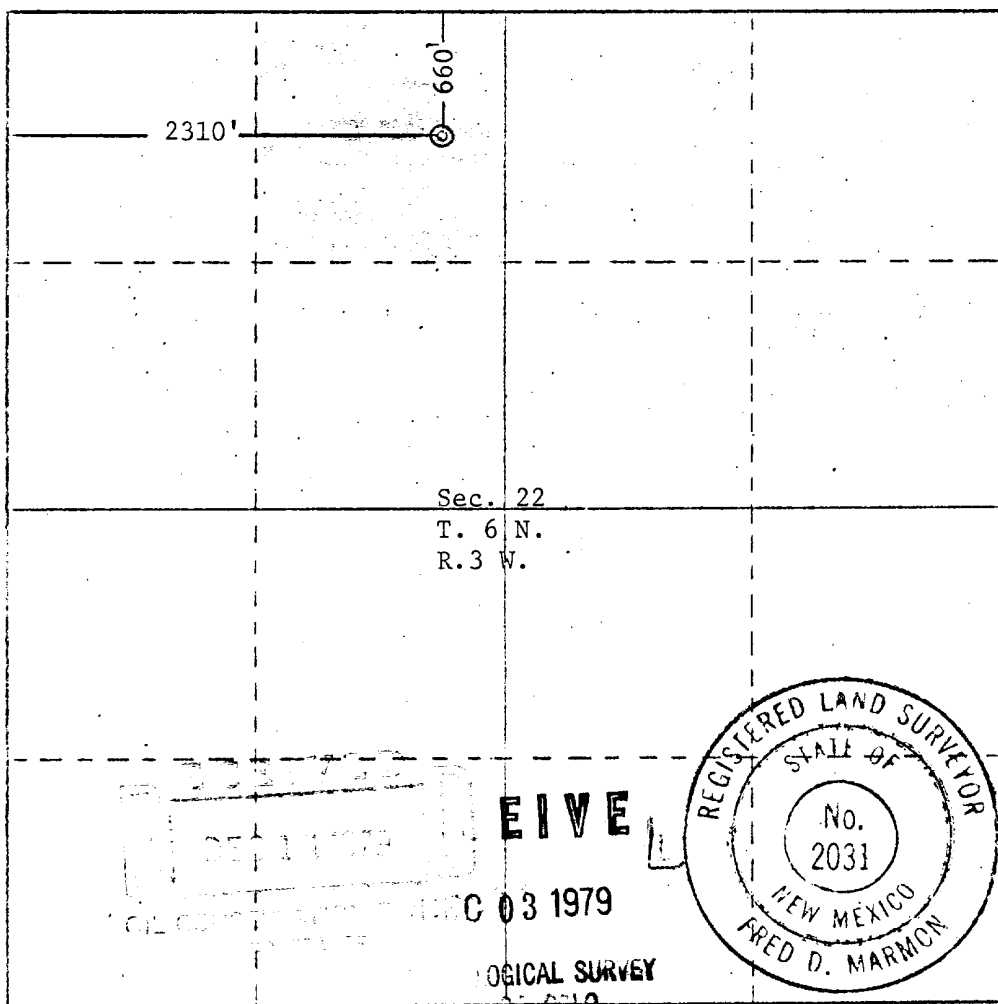
Operator REESE AND JONES		Lease NZ			Well No. 3
Unit Letter C	Section 22	Township 6 North	Range 3 West	County Valencia	
Actual Footage Location of Well:					
660 feet from the north		line and	2310	feet from the west line	
Ground Level Elev. 5956	Producing Formation Pennsylvanian	Pool Wildcat		Dedicated Acreage: 40.00 Acres	

1. Outline the acreage dedicated to the subject well by colored pencil or hachure marks on the plat below.
2. If more than one lease is dedicated to the well, outline each and identify the ownership thereof (both as to working interest and royalty).
3. If more than one lease of different ownership is dedicated to the well, have the interests of all owners been consolidated by communitization, unitization, force-pooling, etc?

Yes No If answer is "yes," type of consolidation _____

If answer is "no," list the owners and tract descriptions which have actually been consolidated. (Use reverse side of this form if necessary.) _____

No allowable will be assigned to the well until all interests have been consolidated (by communitization, unitization, forced-pooling, or otherwise) or until a non-standard unit, eliminating such interests, has been approved by the Commission.



CERTIFICATION

I hereby certify that the information contained herein is true and complete to the best of my knowledge and belief.

Morris B. Jones

Morris B. Jones

Engineer

Company
Reese and Jones

Date
November 27, 1979

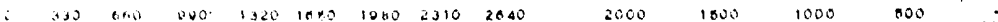
I hereby certify that the well location shown on this plat was plotted from field notes of actual surveys made by me or under my supervision, and that the same is true and correct to the best of my knowledge and belief.

Date Surveyed
November 24, 1979

Registered Professional Engineer and/or Land Surveyor

Fred D. Marmon

Certificate No.
N.M. L.S. # 2031



GUYLINE ANCHOR

GUYLINE ANCHOR

50'

50'

FXK MUD
PUMP 10' X 25'

RESERVE PIT 60' X 20'

MUD PIT 500 BBL.
12' X 55'

10' X 40'

WATER TANK
8' X 35'

LIGHT PLANT
8' X 20'

FUEL SKID
8' X 20'

SUB
8' X 20'

12'
8'

PIPE RACK
30'

PIPE RACK
30'

PIPE RACK
30'

80'

PIPE BASKET
8' X 35'

CAT WALK AND PIPE BASKET
8' X 45'

PIPE BASKET
8' X 35'

GUYLINE ANCHOR

GUYLINE ANCHOR

50'

50'

FIVE

03 1979

LOGICAL SURVEY

110'

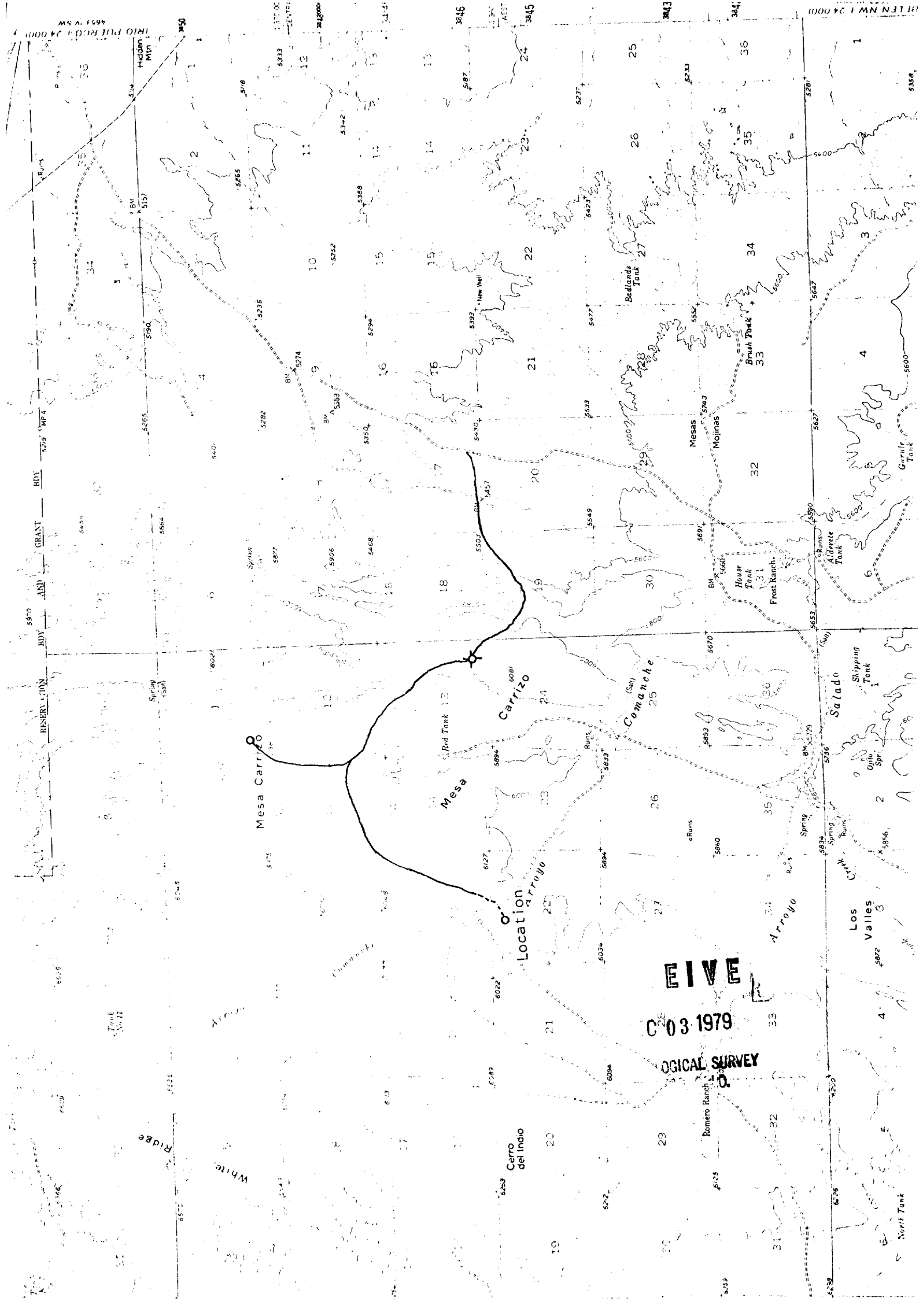
50'

SCALE: 1" = 20'

N

0'

0'



RIO PUERTO 24000
4653 N 5 W

ELE NW 1 24000

Ridge

White

Cerro del Indio

Location

Mesa Carrizo

Red Tank 13

Comanche

Salado

Los Valles

FIVE

C 03 1979

LOGICAL SURVEY

ROMERO RANCH

Norik Tank

Shipping Tank

Orito Spr.

House Tank

Frost Ranch

Brush Tank

Bedlands Tank

Mojinas

Mesas

New Well

Hidden Mt.

P. Pines

Spring

Spring

Spring

Spring

Spring

Spring

Spring

Spring

Spring

Spring

Spring

Spring

Spring

Spring

Spring

Spring

Spring

Spring

Spring

Spring

Spring

Spring

Spring

Spring

Spring

Spring

Spring

Spring

Spring

Spring

Spring

Spring

Spring

Spring

Spring

Spring

Spring

Spring

Spring

Spring

Spring

Spring

Spring

Spring

Spring

Spring

Spring

Spring

Spring

Spring

Spring

Spring

Spring

Spring

Spring

Spring

Spring

Spring

Spring

Spring

Spring

Spring

Spring

Spring

Spring

Spring

Spring

Spring

Spring

Spring

Spring

Spring

Spring

Spring

Spring

Spring

Spring

Spring

Spring

Spring

Spring

Spring

Spring

Spring

Spring

Spring

Spring

Spring

Spring

Spring

Spring

Spring

Spring

Spring

Spring

Spring

Spring

Spring

Spring

Spring

Spring

Spring

Spring

Spring

Spring

Spring

Spring

Spring

Spring

Spring

Spring

Spring

Spring

Spring

Spring

Spring

Spring

Spring

Spring

Spring

Spring

Spring

Spring

Spring

Spring

Spring

Spring

Spring

Spring

Spring

Spring

Spring

Spring

Spring

Spring

Spring

Spring

Spring

Spring

Spring

Spring

Spring

Spring

Spring

Spring

Spring

Spring

Spring

Spring

Spring

Spring

Spring

Spring

Spring

Spring

Spring

Spring

Spring

Spring

Spring

Spring

Spring

Spring

Spring

Spring

Spring

Spring

Spring

Spring

Spring

Spring

Spring

Spring

Spring

Spring

Spring

Spring

Spring

Spring

Spring

Spring

Spring

Spring

Spring

Spring

Spring

Spring

Spring

Spring

Spring

Spring

Spring

Spring

Spring

Spring

Spring

Spring

Spring

Spring

Spring

Spring

Spring

Spring

Spring

Spring

Spring

Spring

Spring

Spring

Spring

Spring

Spring

Spring

Spring

Spring

Spring

Spring

Spring

Spring

Spring

Spring

Spring

Spring

Spring

Spring

Spring

Spring

Spring

Spring

Spring

Spring

Spring

Spring

Spring

Spring

Spring

Spring

Spring

Spring

Spring

Spring

Spring

Spring

Spring

Spring

Spring

Spring

Spring

Spring

Spring

Spring

Spring

Spring

Spring

Spring

Spring

Spring

Spring

Spring

Spring

Spring

Spring

Spring

Spring

Spring

Spring

Spring

Spring

Spring

Spring

Spring

Spring

Spring

Spring

Spring

Spring

Spring

Spring

Spring

Spring

Spring

Spring

Spring

Spring

Spring

Spring

Spring

Spring

Spring

Spring

Spring

Spring

Spring

Spring

Spring

Spring

Spring

Spring

Spring

Spring

Spring

Spring

Spring

Spring

Spring

Spring

Spring

Spring

Spring

Spring

Spring

Spring

Spring

Spring

Spring

Spring

Spring

Spring

Spring

Spring

Spring

Spring

Spring

Spring

MORRIS B. JONES
CONSULTING PETROLEUM ENGINEER
1223 BANK OF NEW MEXICO BLDG.
ALBUQUERQUE, NEW MEXICO 87102

November 27, 1979

Mr. Carl A. Barrick,
Acting District Engineer
U. S. Geologic Survey
Box 1809
Durango, Colorado 81301

RECEIVED
DEC 03 1979

LOGICAL SURVEY
DURANGO, COLO.

RE: Development Plan for Surface Use,
NTL-6, Reese and Jones, NZ #3,
Unit C, Section 22, T 6N, R 3W,
NMPM, Valencia County, New Mexico,
NM-11728.

Dear Mr. Barrick:

With reference to the enclosed application for Permit to Drill by Reese and Jones on the above referenced well, the following Development Plan for Surface Use is being furnished you in compliance with the 13 Point Program required by the U. S. Geologic Survey:

1. Enclosed is a photostatic excerpt from a U.S.G.S. topographic map showing the existing roads with a three mile radius of the proposed well location and the exit road from New Mexico Highway 6.
2. A short access road will be constructed from the existing road in Section 15 to the well location as shown on the enclosed map. Road construction will be kept to a minimum (approximately one-half mile).
3. No wells have been drilled within a one mile radius of the well location.
4. The information on lateral roads is included in Items 1 and 2 and are shown on the enclosed map.
5. If production is encountered, tank battery will be set at the well site.
6. Water supply will be in Rio Puerco, approximately ten miles northeast of the well site.
7. All waste will be placed in reserve pit as shown on the attached rig layout, allowed to dry, and be buried.

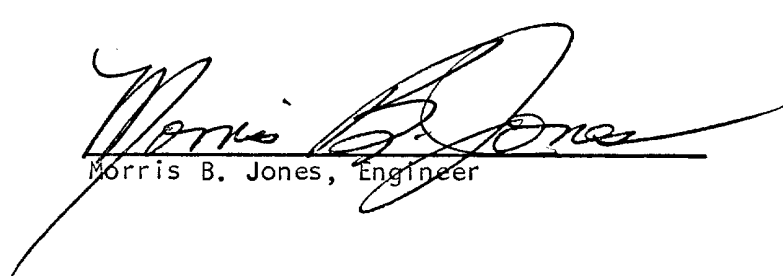
November 27, 1979

8. There will be no camps nor will any airstrips be constructed with the proposed well location.
9. Rig layout sketch is attached hereto. The general topography in the immediate area of the well location is sloping to the southeast. The drilling pad will be compacted with a bulldozer.
10. Surface will be restored as required by the Bureau of Land Management.
11. Surface is the Abo formation with sparse grazing and vegetation.
12. The operator's field representative who is responsible for assuring compliance with the approved surface use and operation plan is:

Morris B. Jones
1223 Bank of New Mexico Building
Albuquerque, New Mexico 87102

Phone: 505-247-8393

13. I certify that I or persons under my direct supervision, have inspected the proposed drillsite and access route; that I am familiar with the conditions which presently exist; that the statements made in this plan are, to the best of my knowledge, true and correct; and that the work associated with the operations proposed herein will be performed by Reese and Jones and its contractors and subcontractors in conformity with this plan and the terms and conditions under which it is approved.


Morris B. Jones, Engineer

Enclosures

REIVE L

NOV 03 1979

LOGICAL SURVEY
CO, COLO.