

NO. OF COPIES RECEIVED	
DISTRIBUTION	
SANTA FE	1
FILE	1
U.S.G.S.	2
LAND OFFICE	1
OPERATOR	1

NEW MEXICO OIL CONSERVATION COMMISSION

Form C-101  
Revised 1-1-65

API # 30-061-20017

5A. Indicate Type of Lease  
STATE  FEE

APPLICATION FOR PERMIT TO DRILL, DEEPEN, OR PLUG BACK

1a. Type of Work  
b. Type of Well DRILL  DEEPEN  PLUG BACK   
OIL WELL  GAS WELL  OTHER  SINGLE ZONE  MULTIPLE ZONE

2. Name of Operator  
BRANA CORPORATION

3. Address of Operator  
1223 First Interstate Bldg, 320 Gold Ave.SW, Albuquerque, NM 87102

4. Location of Well  
UNIT LETTER G LOCATED 2500 FEET FROM THE North LINE  
AND 2330 FEET FROM THE East LINE OF SEC. 19 TWP. 6N RGE. 2W NMPM

7. Unit Agreement Name  
8. Farm or Lease Name  
Penteco-Trinity  
9. Well No.  
1  
10. Field and Pool, or Wildcat  
Wildcat-Penn.  
12. County  
Valencia

19. Proposed Depth 3000  
19A. Formation Pennsylvanian  
20. Rotary or C.T. Rotary

21. Elevations (Show whether DF, RT, etc.) 5572 ung. grnd.  
21A. Kind & Status Plug. Bond Blanket 298/053  
21B. Drilling Contractor  
22. Approx. Date Work will start December 10, 1984

PROPOSED CASING AND CEMENT PROGRAM

SIZE OF HOLE	SIZE OF CASING	WEIGHT PER FOOT	SETTING DEPTH	SACKS OF CEMENT	EST. TOP
12 1/4	8 5/8	32	200	90	Circ. to surface
6 3/4	4 1/2	11	3000	200	1500'

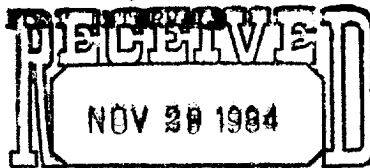
Plan to spud 12 1/4" hole and drill to 205' and set 200' of 8 5/8" casing with sufficient cement to circulate to surface. Drill 6 3/4" hole to 3000' or depth sufficient to test the Pennsylvanian formation and run appropriate logs. Zones of significant interest will be tested by D.S.T. when penetrated. If production is indicated, 4 1/2" casing will be run to total depth, cemented with 200 sxs, perforated and stimulated if required.

Double Gate Hydraulic BOP tested to 3000 psi will be on well during all drilling operations.

APPROVED FOR 90 DAYS  
PER 2-27-85

COLLECT AND SACK SAMPLES FOR  
NEW MEXICO BUREAU OF MINES, SOCORRO  
AT AT LEAST TEN FEET INTERVALS

OIL CONSERVATION COMMISSION TO BE NOTIFIED  
WITHIN 24 HOURS OF BEGINNING OPERATIONS



IN ABOVE SPACE DESCRIBE PROPOSED PROGRAM: IF PROPOSAL IS TO DEEPEN OR PLUG BACK, GIVE DATA ON PROPOSED NEW PRODUCTIVE ZONE. GIVE BLOWOUT PREVENTER PROGRAM, IF ANY.

I hereby certify that the information above is true and complete to the best of my knowledge and belief.

Signed Morris B. Jones Title Morris B. Jones, Engineer Date November 28, 1984

APPROVED BY [Signature] TITLE DISTRICT SUPERVISOR DATE 11-29-84

CONDITIONS OF APPROVAL, IF ANY: No allowable will be assigned until Non-standard location has been approved by this office.

OIL CONSERVATION DIVISION

P. O. BOX 2088

SANTA FE, NEW MEXICO 87501

Form C-102  
Revised 10-1-78

All distances must be from the outer boundaries of the Section.

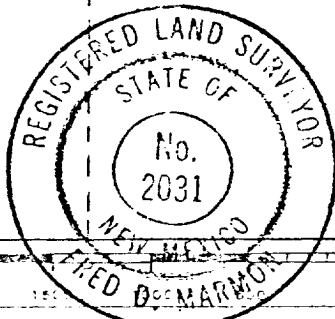
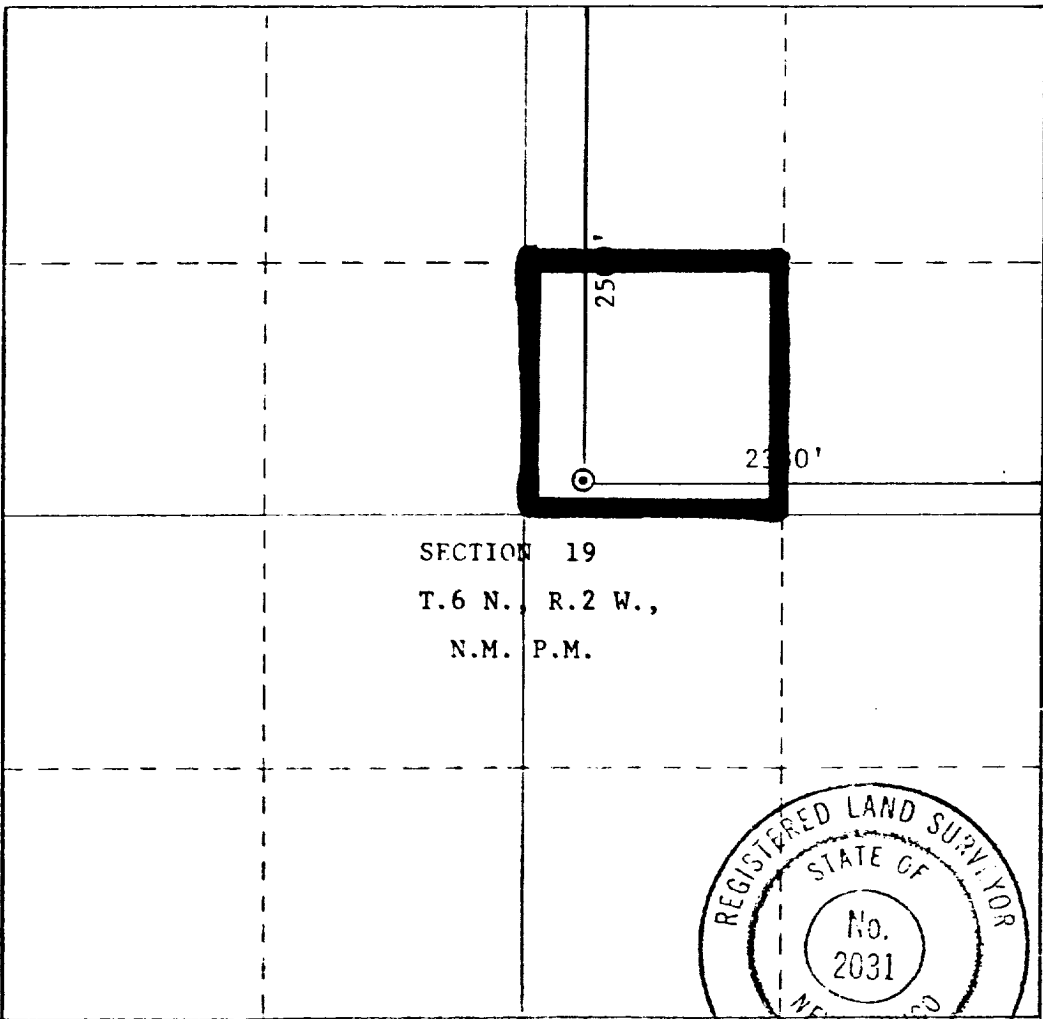
Operator: <b>BRANA CORPORATION</b>		Lease <b>Penteco-Trinity</b>			Well No. <b>1</b>
Unit Letter <b>G</b>	Section <b>19</b>	Township <b>6 North</b>	Range <b>2 West</b>	County <b>Valencia</b>	
Actual Footage Location of Well: <b>2500'</b> feet from the <b>north</b> line and <b>2330'</b> feet from the <b>east</b> line					
Ground Level Elev. <b>5572</b>	Producing Formation <b>Pennsylvanian</b>		Pool <b>Wildcat</b>	Dedicated Acreage: <b>40.00</b> Acres	

1. Outline the acreage dedicated to the subject well by colored pencil or hachure marks on the plat below.
2. If more than one lease is dedicated to the well, outline each and identify the ownership thereof (both as to working interest and royalty).
3. If more than one lease of different ownership is dedicated to the well, have the interests of all owners been consolidated by communitization, unitization, force-pooling, etc?

Yes  No If answer is "yes," type of consolidation \_\_\_\_\_

If answer is "no," list the owners and tract descriptions which have actually been consolidated. (Use reverse side of this form if necessary.) \_\_\_\_\_

No allowable will be assigned to the well until all interests have been consolidated (by communitization, unitization, forced-pooling, or otherwise) or until a non-standard unit, eliminating such interests, has been approved by the Commission.



CERTIFICATION

I hereby certify that the information contained herein is true and complete to the best of my knowledge and belief.

Name: *Morris B. Jones*  
 Position: **Engineer**  
 Company: **Brana Corporation**  
 Date: **November 28, 1984**

I hereby certify that the well location shown on this plat was plotted from field notes of actual surveys made by me or under my supervision, and that the same is true and correct to the best of my knowledge and belief.

Date Surveyed: **Nov. 12, 1984**  
 Registered Professional Engineer and/or Land Surveyor: **Fred D. Marmon**  
*Fred D. Marmon*  
 Certificate No.: **2031**