



# New Mexico Office of the State Engineer

## Water Column/Average Depth to Water

(A CLW##### in the POD suffix indicates the POD has been replaced & no longer serves a water right file.)

(R=POD has been replaced,  
O=orphaned,  
C=the file is closed)

(quarters are 1=NW 2=NE 3=SW 4=SE)

(quarters are smallest to largest)

(NAD83 UTM in meters)

(In feet)

POD Number	POD Sub-Code	basin	County	Q 64	Q 16	Q 4	Sec	Tws	Rng	X	Y	Distance	Depth Well	Depth Water	Water Column
<a href="#">C 00863</a>			ED	3	3	1	16	24S	29E	594524	3565091*	3372	220		
<a href="#">C 00863 CLW199506</a>	O		ED	3	3	1	16	24S	29E	594524	3565091*	3372	220		
<a href="#">C 00463</a>	C		ED	4	4	4	17	24S	29E	594332	3564282*	4014	260	4	256
<a href="#">C 01627</a>	C		ED	1	4	4	28	23S	29E	595649	3570959*	4383	170		
<a href="#">C 03615 POD2</a>	CUB		ED	4	2	4	06	24S	29E	592661	3568013	4820	60	26	34

Average Depth to Water: **15 feet**

Minimum Depth: **4 feet**

Maximum Depth: **26 feet**

Record Count: 5

### UTM NAD83 Radius Search (in meters):

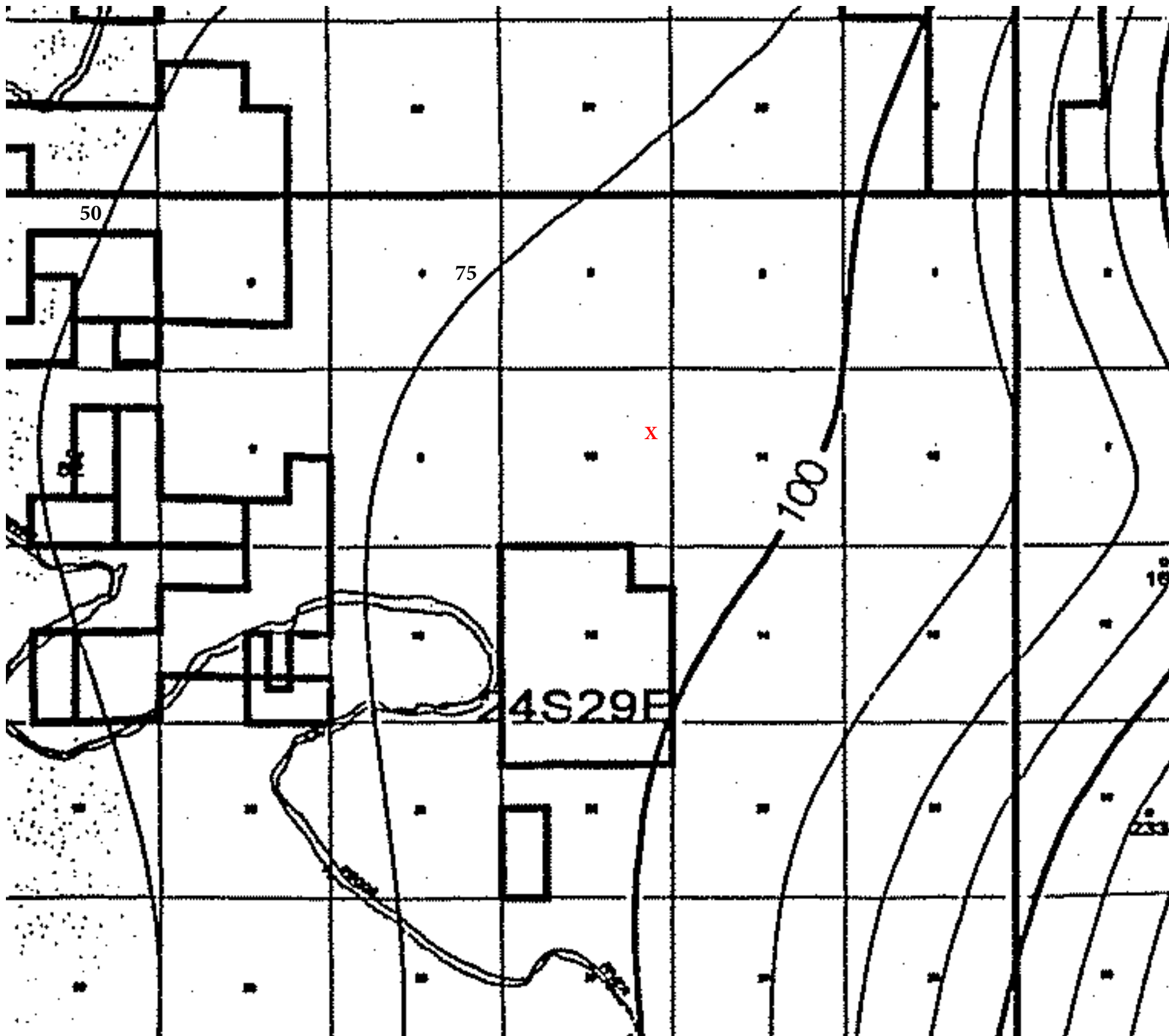
**Easting (X):** 597356.68

**Northing (Y):** 3566921.67

**Radius:** 5000

\*UTM location was derived from PLSS - see Help

The data is furnished by the NMOSE/ISC and is accepted by the recipient with the expressed understanding that the OSE/ISC make no warranties, expressed or implied, concerning the accuracy, completeness, reliability, usability, or suitability for any particular purpose of the data.



H-10-24S-29E ChevronTexaco Trend Map