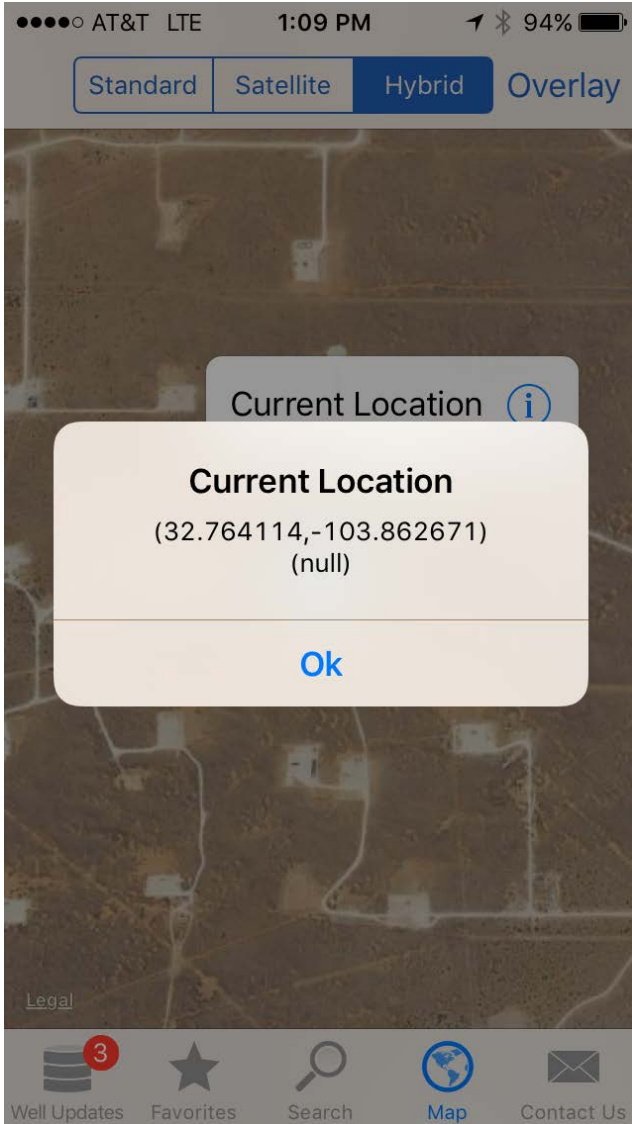


**From:** [Tucker, Shelly](#)  
**To:** [Patterson, Heather, EMNRD](#)  
**Subject:** Re: New tamano 10 #7H remediation plan  
**Date:** Friday, November 13, 2015 12:06:41 PM  
**Attachments:** IMG\_4962.PNG  
IMG\_4963.PNG  
image001.png

---

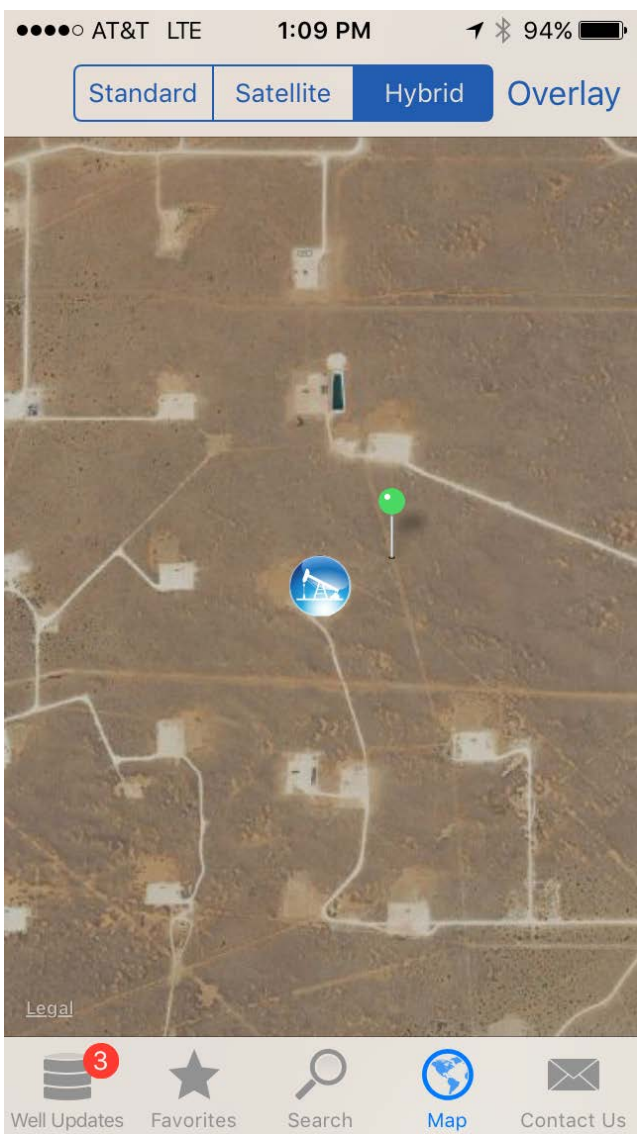


NW N NE  
300 330 30 60  
2°N (T) 32.763447°N, 103.864563°W ±16.4ft ▲ 3714ft



BLM S. Tucker

10 Nov 2015, 12:58





☼ 352°N (T) ● 32.763710°N, 103.862610°W ±16.4ft ▲ 3714ft



BLM S.Tucker

10 Nov 2015, 13:12



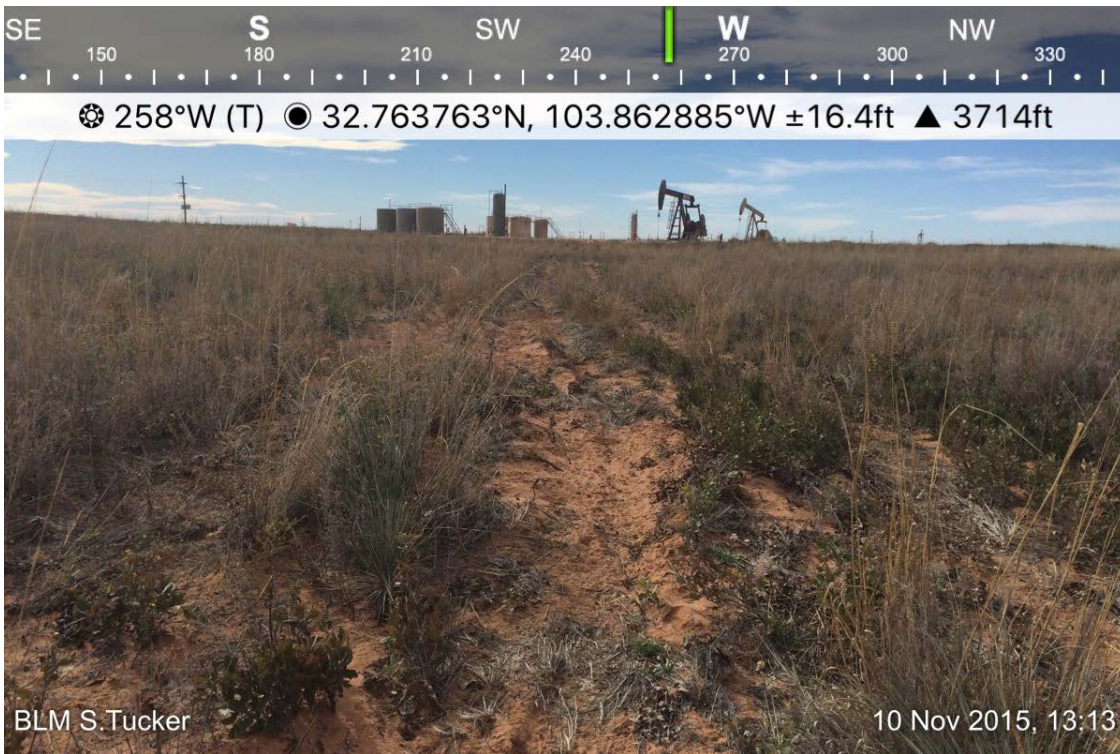


190°S (T) 32.763828°N, 103.862610°W ±16.4ft ▲ 3717ft



BLM S.Tucker

10 Nov 2015, 13:11



If you have any questions or concerns, please do not hesitate to contact me.

Sincerely,

*Shelly J Tucker*

Environmental Protection Specialist  
Bureau of Land Management

620 E. Greene St  
Carlsbad, NM 88220

575.234.5905 - Direct  
575.361.0084 - Cellular

[stucker@blm.gov](mailto:stucker@blm.gov)



The BLM acceptance/approval does not relieve the operator of liability should their operations have failed to adequately investigate and remediate contamination that may pose a threat to groundwater, surface water, human health or the environment or if the location fails to reclaim properly. In such an event that the location does not revegetate, or future issues with contaminants are encountered, the operator will be asked to address the issues until the contaminant issues are fully mitigated and the location is successfully reclaimed. In addition, BLM approval does not relieve the operator of responsibility for compliance with any other federal, state or local laws/regulations.

**Confidentiality Warning:** This message along with any attachments are intended only for use of the individual or entity to which it is addressed and may contain information that is privileged or confidential and exempt from disclosure under applicable law. If the reader of this message is not the intended recipient or the employee or agent responsible for delivering this message to the intended recipient, you are hereby notified that any dissemination, distribution, or copying of this communication is strictly prohibited. If you have received this communication in error, please notify the sender immediately.

On Fri, Nov 13, 2015 at 8:29 AM, Tucker, Shelly <[stucker@blm.gov](mailto:stucker@blm.gov)> wrote:

Yes I did.... It is out in the pasture...pretty sandy. Let me send you some pics.

If you have any questions or concerns, please do not hesitate to contact me.

Sincerely,

*Shelly J Tucker*

Environmental Protection Specialist  
Bureau of Land Management

620 E. Greene St  
Carlsbad, NM 88220

575.234.5905 - Direct  
575.361.0084 - Cellular

[stucker@blm.gov](mailto:stucker@blm.gov)



The **BLM acceptance/approval does not** relieve the operator of liability should their operations have failed to adequately investigate and remediate contamination that may pose a threat to groundwater, surface water, human health or the environment or if the location fails to reclaim properly. In such an event that the location does not revegetate, or future issues with contaminants are encountered, the operator will be asked to address the issues until the contaminant issues are fully mitigated and the location is successfully reclaimed. In addition, BLM approval does not relieve the operator of responsibility for compliance with any other federal, state or local laws/regulations.

**Confidentiality Warning:** This message along with any attachments are intended only for use of the individual or entity to which it is addressed and may contain information that is privileged or confidential and exempt from disclosure under applicable law. If the reader of this message is not the intended recipient or the employee or agent responsible for delivering this message to the intended recipient, you are hereby notified that any dissemination, distribution, or copying of this communication is strictly prohibited. If you have received this communication in error, please notify the sender immediately.

On Fri, Nov 13, 2015 at 7:13 AM, Patterson, Heather, EMNRD

<[Heather.Patterson@state.nm.us](mailto:Heather.Patterson@state.nm.us)> wrote:

Shelly,

Did you make it out to this site?

Heather Patterson

Environmental Specialist

NMOCD District II

Office (575)748-1283 ext.101

Cell (575)703-0228

---

**From:** Zack Thomas [mailto:[zthomas@mewbourne.com](mailto:zthomas@mewbourne.com)]

**Sent:** Tuesday, November 10, 2015 7:49 AM

**To:** Patterson, Heather, EMNRD

**Cc:** Tucker, Shelly

**Subject:** New tamano 10 #7H remedation plan

Sorry about the confusion



**Zack Thomas**

Environmental Rep.

Mewbourne Oil Company

[PO Box 5270](#)

Hobbs, NM 88241 US

Phone: (575) 393-5905 | Fax: (575) 397-6252

(575) 602-2188

Email: [zthomas@Mewbourne.com](mailto:zthomas@Mewbourne.com)



