

talonlpe.com • 866.742.0742



Revegetation and Noxious Weed Management Plan

Legacy Reserves: State CF No 5 * 30-005-60304 * 2RP-3648

Prepared For:

Legacy Reserves Operating, LP
303 W. Wall St. Ste 1300
Midland, TX 79701

Prepared By:

Sheldon L. Hitchcock
Talon/LPE
408 West Texas
Artesia, New Mexico 88210

May 13, 2016

Ms. Amber Groves
NMSLO
2827 N. Dal Paso Ste. 117
Hobbs, NM 88260

Subject: Soil Assessment and Remediation Work Plan
Legacy Reserves Operating, LP
State CF No. 5
API# 30-005-60304 * 2RP-3648

Dear Ms. Groves,

Legacy Reserves Operating, LP (Legacy) has contracted Talon/LPE (Talon) to perform soil assessment and remediation services at the above referenced location. Talon's plan to revegetate and control noxious weeds within the pasture area of this remediation plan consists of the following.

Site and Soil Information

The State CF No. 5 is located approximately twenty-four (24) miles east of Roswell, New Mexico. The legal location for this release is Unit Letter K, Section 13, Township 11 South and Range 27 East in Chaves County, New Mexico. More specifically the latitude and longitude for the release are 33.363369 North and -104.1924744 West. A site plan is presented in [Appendix I](#).

According to the soil survey provided by the United States Department of Agriculture Natural Resources Conservation Service, the soil in this area is made up of Simona fine sandy loam. Per the New Mexico Bureau of Geology and Mineral Resources, the local surface and shallow geology is comprised of eolian sands. Drainage courses in this area are normally dry.

Remediation Activities Affecting State Pasture Land

- The impacted area in the vicinity of sample location S-1 will be excavated to a depth of 3-feet deep. The impacted areas in the vicinity of sample locations of S-2 and S-3 will be excavated to the depth of 1-foot deep. A site plan is attached in [Appendix I](#).
- All of the excavated material will be hauled to an NMOCD approved solid waste disposal facility.
- The excavated areas will then be backfilled with locally obtained sand and contoured to match the surrounding terrain.
- The area will be seeded with the NM State Land Office recommended seed mixture for the area.
- A final closure report documenting all remedial actions and analytical results will be provided to the NMOCD Artesia Office and the New Mexico State Land Office (NMSLO) along with a Final C-141.

Site Preparation

The backfilled areas in the pasture will be contoured to match the surrounding terrain and left in a “rough” condition to approximate natural surface deviations, control erosion, and promote revegetation. Seed labels and revegetation forms will be included in the remediation closure reports submitted to NMOCD and NMSLO.

Seeding

Immediately following preparation of the site, a Culti-Pack Seed Drill will be utilized to plant ½ acre of BLM #2 seed mixture following manufacture recommended application rates. The site will be monitored by Legacy personnel to insure proper revegetation. Should revegetation not take place then further amendments will be applied.

Noxious Weed Management

All equipment to be used at this location will be washed prior to mobilization to prevent potential spread of noxious weeds to this site.

Should you have any questions or if further information is required, please do not hesitate to contact our office at (575)-746-8768

Respectfully submitted,

TALON/LPE



Sheldon L. Hitchcock
Project Manager



David J. Adkins
District Manager

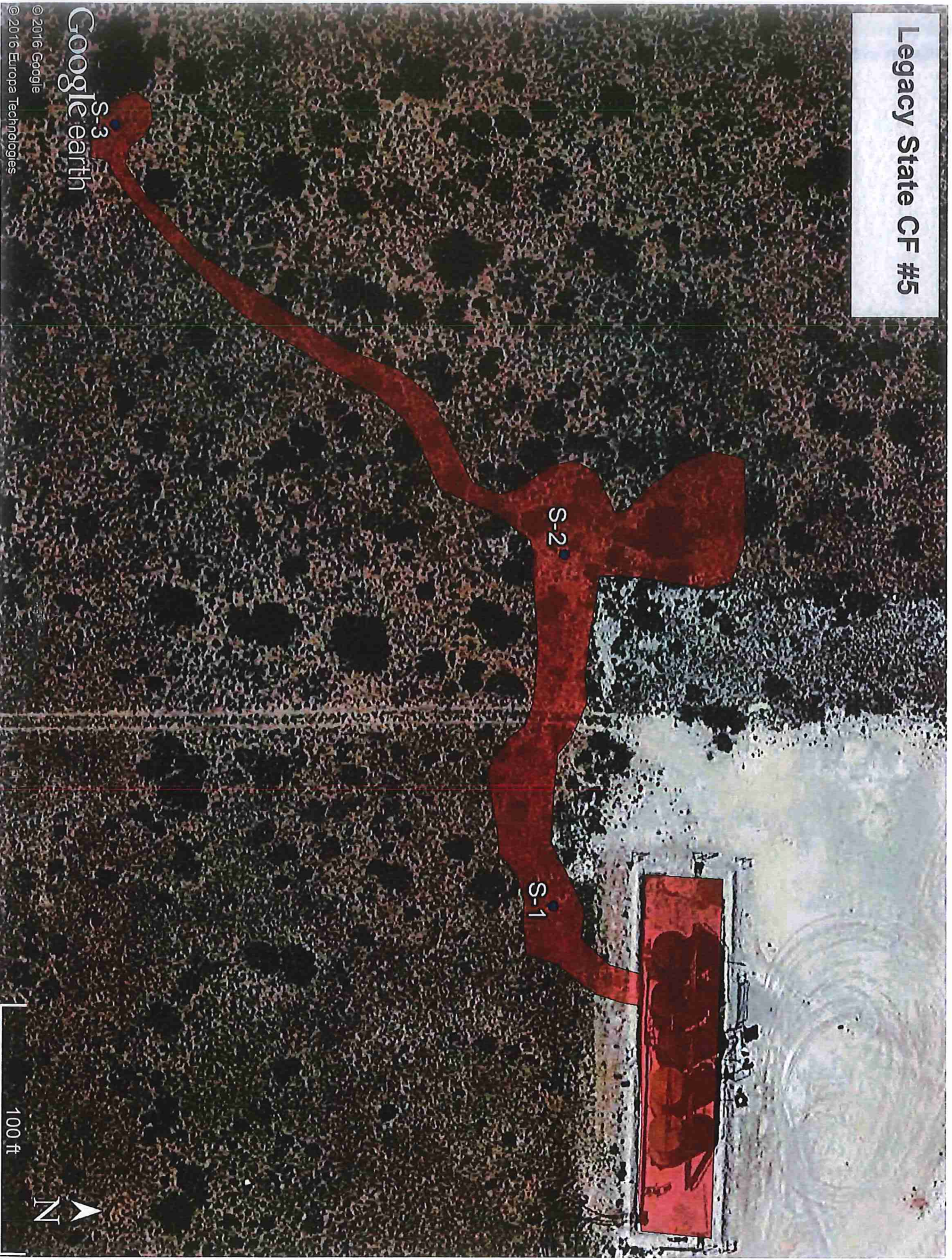
Attachments:

Appendix I Site Plan

APPENDIX I

SITE PLAN

Legacy State CF #5



Google
S-3
earth