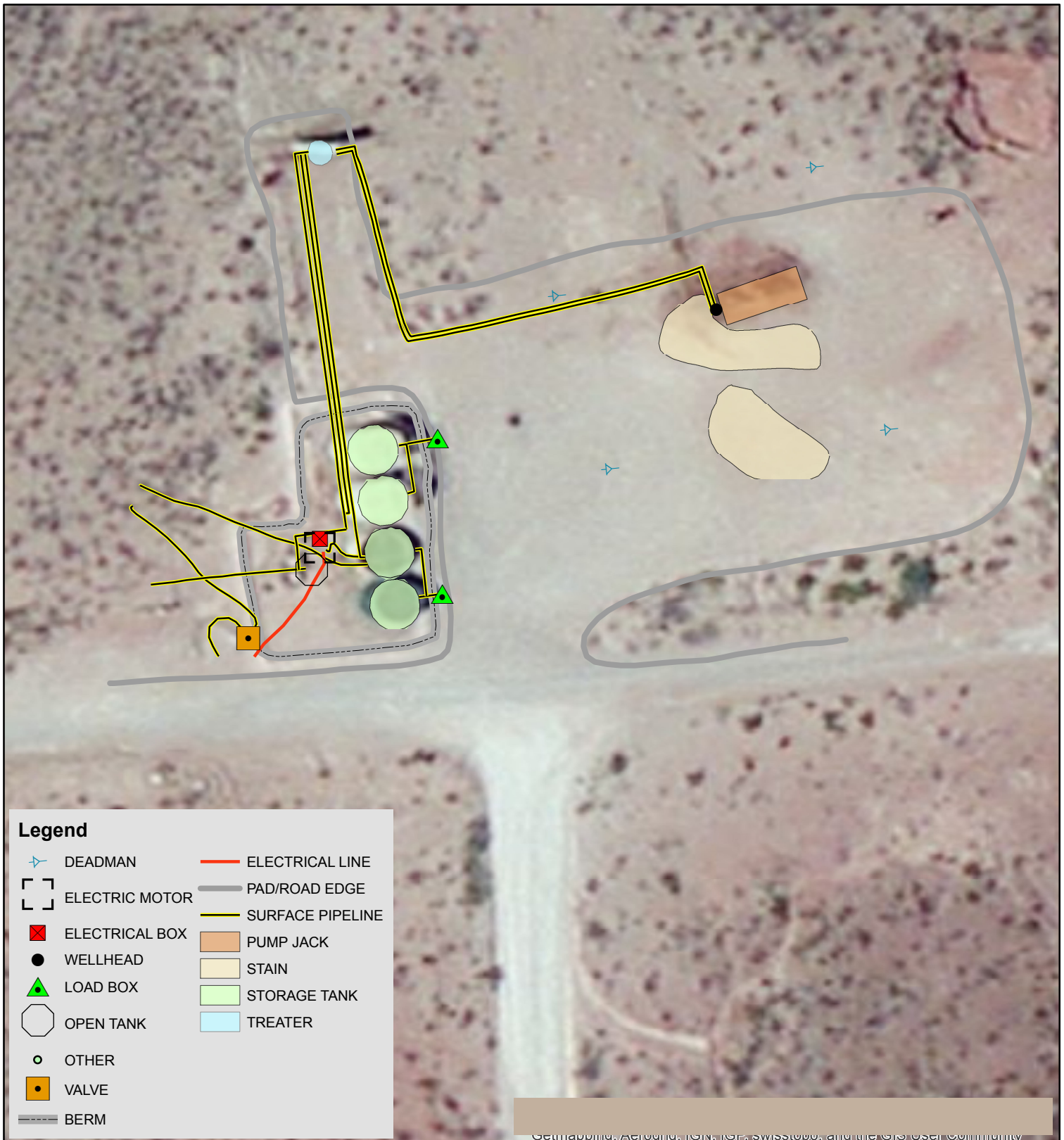


# Initial Map

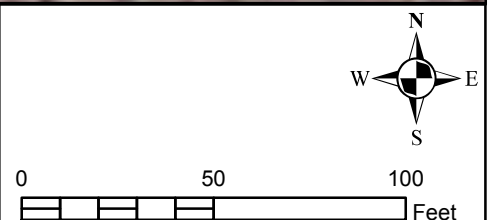


Getmapping, Aerogrid, IGN, iCub, Swisstopo, and the OpenStreetMap community



## GP II ENERGY LITTLEFIELD BO #2 BATTERY

LEGALS: UL/A Sec. 34  
T26S - R29E  
EDDY COUNTY, NM  
(API 30-015-24529)



GPS date: 9/5/2013 LS  
Drawing date: 9/5/2013  
Drafted by: LS