

ENVIRONMENTAL PLUS, INC.

2100 Ave 'O'
P.O. Box 1558
Eunice, NM 88231
ddominguezepi@gmail.com
Office: (575) 394-3481
Fax: (575) 394-2601



Site Characterization and Work Plan

**Vanguard
Aspen 32 State Com #1 Transfer Line
Eddy County, New Mexico
Unit Letter "E", Section 5, Township 18 South, Range 28 East
Latitude 32.775554 North, Longitude 104.20605 West
NMOCD Reference# 2RP-3465**

Prepared For:

Vanguard Operating, LLC
4001 Penbrook, Suite 201
Odessa, Texas 79762

Prepared By:

Environmental Plus, Inc.
2100 Ave 'O'
Eunice, NM 88231

August 2017

A handwritten signature in black ink, appearing to read 'Daniel Dominguez', is written over a horizontal line.

Daniel Dominguez
Project Manager



The following *Site Characterization and Work Plan* serves as a condensed update on field activities undertaken and proposed actions for the afore referenced Site.

Background:

The site is located in Unit Letter E (SW ¼ NW ¼), Section 5, Township 18 South, Range 28 East, approximately twelve miles east of Artesia, in Eddy County, New Mexico. The property is owned by the State of New Mexico.

The release site is located in the pasture off an active lease road; latitude 32.775554 North, longitude 104.20605 West. Area Map, Site Location Map, and Sample/Site Map are included as Figure 1, Figure 2, and Figure 3, respectively. The Initial NMOCD Form C-141 indicates the source of release was a pinhole in a valve transition on the 3" line bringing produced water from the Aspen 32 State Com #1 to the Walter Solt State #1 an SWD, resulting in a release of 50 bbls of produced water. The valve transition was replaced, the 3" line was placed back into service. A vacuum truck was immediately brought to the release site, standing fluids were recovered. The visually stained area totals approximately 11,300 square feet. The Initial NMOCD Form C-141 is included as Attachment IV.

NMOCD Site Classification:

A search for water wells was completed utilizing the USGS and New Mexico Office of the State Engineer's (NMOSE) websites. There are two wells located in the area surrounding the release site (reference *Table I*). Also, no wells (domestic, agriculture or public) and no bodies of surface water exist within a 1,000-foot radius of the release site (reference *Figure 2*). The USGS database located a well at 1,886 meters with an indicated water depth of 108 feet below ground surface (bgs) and the NMOSE database located a domestic well at 3,496 meters with an indicated depth to water of 95 feet bgs, however, this is too great a distance to accurately determine depth to water for this location (reference *Table I* and *Attachment II*). The Chevron Trend Map was utilized to determine an approximate depth to water of 75 – 80 feet bgs.

Utilizing this information, the NMOCD guidelines indicate the Aspen 32 State Com #1 Transfer Line release site to have a ranking score of ten. Based on this score, the NMOCD Recommended Remedial Action Levels (RRALs) for delineation at this Site were determined as follows:
Benzene – 10 mg/Kg, BTEX – 50 mg/Kg, TPH – 1,000 mg/Kg, and Chloride – 600 mg/Kg.

The visually stained area totals an area of approximately 11,300 square feet. The area is topsoil approximately one to two feet thick atop caliche.

Delineation Progress:

On July 25 and 28, 2017 EPI personnel mobilized on site to collect soil samples to determine the vertical extent of contamination. A total of thirty-one soil samples were collected from four sample locations; SP1 – SP4. Two soil samples from each sample location were sent to Cardinal Labs in Hobbs, New Mexico, for testing. Laboratory analytical results indicate chlorides and TPH above NMOCD RRALs at surface level. Field testing indicates Chloride concentrations above NMOCD RRALs from surface level to eight feet bgs (reference *Figure 3* and *Table 2*).

On July 26, 2017 EPI personnel were on site to collect soil samples to determine the horizontal extent of contamination. A total of twelve samples were collected from six sample locations; SP5 – SP10. All twelve samples were sent to Cardinal labs for testing. Laboratory analytical results indicate that the areas adjacent to the release area, horizontally, are void of Benzene, BTEX, TPH, and Chloride concentrations more than NMOCD RRALs (reference *Figure 3* and *Table 2*).

Portions of select soil samples were field tested for organic vapors and chloride concentrations. Soil samples collected for field testing of organic vapors were placed in self-sealing polyethylene bags and allowed to equilibrate to ~70° F. Field testing of organic vapors utilized a Mini-Rae™ Photoionization Detector (PID) equipped with a 10.6 electron-volt (eV) calibrated for benzene response. Chloride concentrations were determined via use of a LaMotte Chloride Kit (Titration Method).

Soil samples designated for laboratory analyses were collected into laboratory provided glass containers, labeled and inserted into self-sealing polyethylene bags, placed in a cooler, chilled and transported to an independent laboratory for quantification of contaminant concentrations under Chain-of-Custody protocol.

Proposed Actions:

Considering depth to water, field testing, and laboratory analytical data, EPI proposes to excavate the release area to approximately four-feet bgs. When excavation activities are complete a twenty-mil poly-ethylene liner will be installed over the excavation floor and the excavation will be backfilled with two feet clean caliche then two feet clean topsoil to finish grade. Contaminated soil will be hauled to a state approved disposal facility. Backfill will be free of deleterious material or rocks or large clumps and will continue until the excavation is closed. Upon completion of backfill activities, the area will be contoured to blend with existing pasture area and protected against wind/water erosion.

Revegetation Plan:

In an attempt to achieve native plant cover and diversity levels equal to or exceeding the natural potential levels in undisturbed soils adjacent to the release area, the pasture area will be seeded with BLM mixture #2 at a rate of 22 lbs per acre. Seed will be applied to the area via hand dispersal as soon as backfill activities are complete. After seeding has been completed the area will be thoroughly watered. After a period of three months the area will be examined for vegetative growth and re-seeded if no growth has occurred.

Noxious Weed Management Plan:

In an effort to prevent the spread of noxious weeds such as African Rue, Siberian Elm, Jointed Goatgrass, Russian Olive, Camelthorn, Saltcedar, Starthistle varieties, Hoary Cress and Russian Knapweed, the area will be confirmed to be clear of any noxious weeds. If any are located they will be removed by hand and the area treated with an appropriate herbicide. After a period of three months the area will be examined for noxious weed growth and re-treated if any growth has occurred.

Following completion of NMOCD and NMSLO approved Proposed Actions, EPI will provide a detailed *Final Closure Report* to Vanguard, NMOCD, and NMSLO personnel. Vanguard and EPI personnel would welcome an opportunity to briefly discuss the *Work Plan* at your earliest convenience.

Should you have any questions or concerns please feel free to contact me at (575) 394-3481 or via e-mail at ddominguezepi@gmail.com or Mr. Chuck Johnston at (432) 202-4771 or via e-mail at cjohnston@vnrlc.com. All official communication should be addressed to:

Mr. Chuck Johnston
Vanguard
4001 Penbrook, Suite 2001
Odessa, Texas 79762

Sincerely,

ENVIRONMENTAL PLUS, INC.

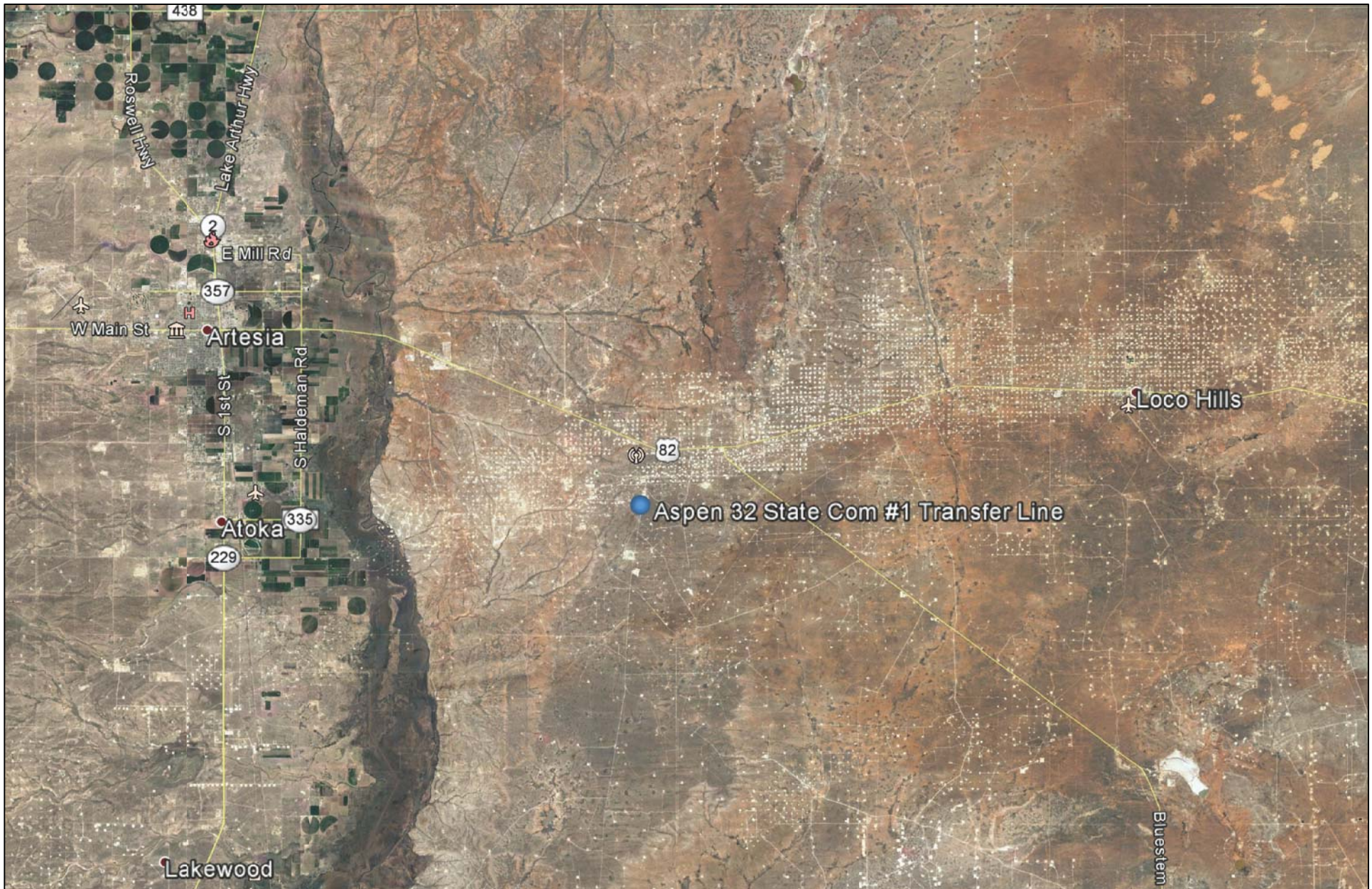


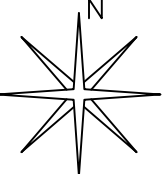
Daniel Dominguez
Environmental Consultant

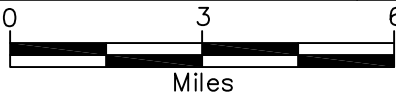
cc: Mike Bratcher, Environmental Specialist – NMOCD District 2, Hobbs, NM
Amber Groves, Remediation Specialist – NMSLO, Hobbs, NM
Chuck Johnston, EHS – Vanguard
File

Encl.: Figure 1 – Area Map
Figure 2 – Site Location Map
Figure 3 – Sample/Site Map
Table 1 – Well Data
Table 2 – Summary of Soil Sample Field Testing and Laboratory Analytical Results
Attachment I – Photographs
Attachment II – NMOSE Average Depth to Groundwater
Attachment III – Laboratory Analytical Results
Attachment IV – Copy of Initial NMOCD Form C-141

FIGURES



<p>Figure 1 Area Map Vanguard Aspen 32 State Com #1 Transfer Line</p>	<p>Eddy County, New Mexico NE 1/4 of SE 1/4, Sec. 6, T18S, R28E N 32° 46' 32.34" W 104° 12' 21.54" Elevation: 3,652 feet amsl</p>	<p>DWG By: D Dominguez August 2017</p>	<p>REVISED:</p> <p>SHEET 1 of 1</p>	
---	---	--	---	---





<p>Figure 2 Site Location Map Vanguard Aspen 32 State Com #1 Transfer Line</p>	<p>Eddy County, New Mexico NE 1/4 of SE 1/4, Sec. 6, T18S, R28E N 32° 46' 32.34" W 104° 12' 21.54" Elevation: 3,652 feet amsl</p>	<p>DWG By: D Dominguez August 2017</p> <p>0 2,000 4,000 Feet</p>	<p>REVISED:</p> <p>SHEET 1 of 1</p>	
--	---	--	---	--



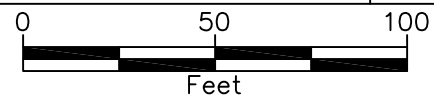
- LEGEND
- ✕SP1 Sample Location
 - Release Area (~11,300 sq.ft.)

Figure 3
Site/Sample Map
Vanguard
Aspen 32 State Com #1 Transfer Line

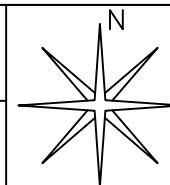
Eddy County, New Mexico
NE 1/4 of SE 1/4, Sec. 6, T18S, R28E
N 32° 46' 32.34" W 104° 12' 21.54"
Elevation: 3,652 feet amsl

DWG By: D Dominguez
August 2017

REVISED:



SHEET
1 of 1



TABLES

TABLE 1

Well Data

Vanguard - Aspen 32 State Com #1 Transfer Line

Ref #	Well Number	Use	Diversion ^A	Owner	q64	q16	q4	Sec	Twsp	Rng	Easting	Northing	Distance ^B	Date Measured	Surface Elevation ^C	Depth to Water
																(ft bgs)
1	RA 08235	STK	1.43	BOGLE FARMS				7	18S	28E	573537	3625134	1,766	--	3,618	--
2	USGS 1				1	3	1	4	18S	28E	576221	3627006	1,886	09-Mar-94	3,656	108
3	RA 11857 POD1	DOL	3	ALVARO VERDUGO	1	1	2	5	18S	26E	577784	3625988	3,497	01-Oct-12	3,657	95

Data obtained from the New Mexico Office of the State Engineer and USGS Websites

^A = In acre feet per annum

^B = In meters

^C = Elevation interpolated from Google Earth based on referenced location

STK = 72-12-1 Livestock watering

DOL = 72-12-1 Domestic and Livestock watering

quarters are 1=NW, 2=NE, 3=SW, 4=SE; quarters are smallest to biggest

-- = Data not provided on the NM iwaters website

Shaded area indicates wells not shown in Figure 2

TABLE 2
Summary of Soil Sample Field Testing and Laboratory Analytical Results
Vanguard
Aspen 32 State Com #1 Transfer Line

Lab Sample ID	Depth (feet)	Soil Status	Sample Date	PID Reading (ppm)	Field Chloride (mg/Kg)	Benzene (mg/Kg)	Toluene (mg/Kg)	Ethylbenzene (mg/Kg)	Total Xylenes (mg/Kg)	Total BTEX (mg/Kg)	GRO C6-C10 (mg/Kg)	DRO C10-C28 (mg/Kg)	EXT DRO C28-C36 (mg/Kg)	Total TPH (mg/Kg)	Chloride (mg/Kg)
SP1	Surface	In-Situ	25-Jul-17	1.5	>4,000	<0.050	<0.050	<0.050	<0.150	<0.300	<10.0	10,500	3,480	13,980	7,060
	2	In-Situ	25-Jul-17	1.2	>4,000	--	--	--	--	--	--	--	--	--	--
	4	In-Situ	25-Jul-17	0.0	>4,000	--	--	--	--	--	--	--	--	--	--
	6	In-Situ	25-Jul-17	0.0	>4,000	--	--	--	--	--	--	--	--	--	--
	8	In-Situ	25-Jul-17	0.0	1,680	--	--	--	--	--	--	--	--	--	--
	10	In-Situ	25-Jul-17	0.0	880	--	--	--	--	--	--	--	--	--	--
	12	In-Situ	25-Jul-17	0.0	480	--	--	--	--	--	--	--	--	--	--
	14	In-Situ	25-Jul-17	0.0	240	--	--	--	--	--	--	--	--	--	--
	18	In-Situ	25-Jul-17	0.0	160	<0.050	<0.050	<0.050	<0.150	<0.300	<10.0	<10.0	<10.0	<30.0	128
SP2	Surface	In-Situ	25-Jul-17	2.8	>4,000	<0.050	<0.050	<0.050	<0.150	<0.300	<10.0	<10.0	<10.0	<30.0	22,000
	4	In-Situ	25-Jul-17	1.3	>4,000	--	--	--	--	--	--	--	--	--	--
	6	In-Situ	25-Jul-17	0.0	>4,000	--	--	--	--	--	--	--	--	--	--
	11	In-Situ	25-Jul-17	0.0	3,360	--	--	--	--	--	--	--	--	--	--
	15	In-Situ	25-Jul-17	0.0	400	--	--	--	--	--	--	--	--	--	--
	19	In-Situ	25-Jul-17	0.0	240	--	--	--	--	--	--	--	--	--	--
	23	In-Situ	25-Jul-17	0.0	160	<0.050	<0.050	0.060	<0.150	<0.300	<10.0	<10.0	<10.0	<30.0	48

TABLE 2
Summary of Soil Sample Field Testing and Laboratory Analytical Results
Vanguard
Aspen 32 State Com #1 Transfer Line

Lab Sample ID	Depth (feet)	Soil Status	Sample Date	PID Reading (ppm)	Field Chloride (mg/Kg)	Benzene (mg/Kg)	Toluene (mg/Kg)	Ethylbenzene (mg/Kg)	Total Xylenes (mg/Kg)	Total BTEX (mg/Kg)	GRO C6-C10 (mg/Kg)	DRO C10-C28 (mg/Kg)	EXT DRO C28-C36 (mg/Kg)	Total TPH (mg/Kg)	Chloride (mg/Kg)
SP3	Surface	In-Situ	28-Jul-17	2.1	>4,000	<0.050	0.050	<0.050	<0.150	<0.300	<10.0	<10.0	<10.0	<30.0	24,400
	2	In-Situ	28-Jul-17	1.6	1,760	--	--	--	--	--	--	--	--	--	--
	4	In-Situ	28-Jul-17	0.0	880	--	--	--	--	--	--	--	--	--	--
	6	In-Situ	28-Jul-17	0.0	560	--	--	--	--	--	--	--	--	--	--
	8	In-Situ	28-Jul-17	0.0	640	--	--	--	--	--	--	--	--	--	--
	12	In-Situ	28-Jul-17	0.0	400	--	--	--	--	--	--	--	--	--	--
	16	In-Situ	28-Jul-17	0.0	240	--	--	--	--	--	--	--	--	--	--
	22	In-Situ	28-Jul-17	0.0	160	<0.050	<0.050	<0.050	<0.150	<0.300	<10.0	<10.0	<10.0	<30.0	64
SP4	Surface	In-Situ	28-Jul-17	0.8	>4,000	<0.050	<0.050	<0.050	<0.150	<0.300	<10.0	<10.0	<10.0	<30.0	23,600
	4	In-Situ	28-Jul-17	0.0	1,600	--	--	--	--	--	--	--	--	--	--
	8	In-Situ	28-Jul-17	0.0	960	--	--	--	--	--	--	--	--	--	--
	13	In-Situ	28-Jul-17	0.0	320	--	--	--	--	--	--	--	--	--	--
	15	In-Situ	28-Jul-17	0.0	160	--	--	--	--	--	--	--	--	--	--
	18	In-Situ	28-Jul-17	0.0	80	--	--	--	--	--	--	--	--	--	--
	20	In-Situ	28-Jul-17	0.0	80	<0.050	<0.050	0.060	<0.150	<0.300	<10.0	<10.0	<10.0	<30.0	112

TABLE 2
Summary of Soil Sample Field Testing and Laboratory Analytical Results
Vanguard
Aspen 32 State Com #1 Transfer Line

Lab Sample ID	Depth (feet)	Soil Status	Sample Date	PID Reading (ppm)	Field Chloride (mg/Kg)	Benzene (mg/Kg)	Toluene (mg/Kg)	Ethylbenzene (mg/Kg)	Total Xylenes (mg/Kg)	Total BTEX (mg/Kg)	GRO C6-C10 (mg/Kg)	DRO C10-C28 (mg/Kg)	EXT DRO C28-C36 (mg/Kg)	Total TPH (mg/Kg)	Chloride (mg/Kg)
SP5	Surface	In-Situ	26-Jul-17	0.0	80	<0.050	<0.050	<0.050	<0.150	<0.300	<10.0	<10.0	<10.0	<30.0	64
	1	In-Situ	26-Jul-17	0.0	80	<0.050	<0.050	0.060	<0.150	<0.300	<10.0	<10.0	<10.0	<30.0	64
SP6	Surface	In-Situ	26-Jul-17	0.0	80	<0.050	<0.050	<0.050	<0.150	<0.300	<10.0	<10.0	<10.0	<30.0	32
	1	In-Situ	26-Jul-17	0.0	80	<0.050	<0.050	0.060	<0.150	<0.300	<10.0	<10.0	<10.0	<30.0	64
SP7	Surface	In-Situ	26-Jul-17	0.0	80	<0.050	<0.050	<0.050	<0.150	<0.300	<10.0	<10.0	<10.0	<30.0	16
	1	In-Situ	26-Jul-17	0.0	80	<0.050	<0.050	<0.050	<0.150	<0.300	<10.0	<10.0	<10.0	<30.0	32
SP8	Surface	In-Situ	26-Jul-17	0.0	80	<0.050	<0.050	<0.050	<0.150	<0.300	<10.0	<10.0	<10.0	<30.0	16
	1	In-Situ	26-Jul-17	0.0	80	<0.050	<0.050	<0.050	<0.150	<0.300	<10.0	<10.0	<10.0	<30.0	32
SP9	Surface	In-Situ	26-Jul-17	0.0	80	<0.050	<0.050	<0.050	<0.150	<0.300	<10.0	<10.0	<10.0	<30.0	16
	1	In-Situ	26-Jul-17	0.0	80	<0.050	<0.050	0.060	<0.150	<0.300	<10.0	<10.0	<10.0	<30.0	32
SP10	Surface	In-Situ	26-Jul-17	0.0	80	<0.050	<0.050	<0.050	<0.150	<0.300	<10.0	<10.0	<10.0	<30.0	96
	1	In-Situ	26-Jul-17	0.0	80	<0.050	<0.050	0.060	<0.150	<0.300	<10.0	<10.0	<10.0	<30.0	16
NMOCD Recommended Remedial Action Levels				100		10				50				1,000	600

-- = Not Analyzed

Red values are in excess of NMOCD Recommended Remedial Action Levels

ATTACHMENTS

ATTACHMENT I
Photographs



Photograph #1- Sampling release area



Photograph #2- Sampling release area

ATTACHMENT II
NMOSE Average Depth to Groundwater



New Mexico Office of the State Engineer

Water Column/Average Depth to Water

(A CLW##### in the POD suffix indicates the POD has been replaced & no longer serves a water right file.)

(R=POD has been replaced,
O=orphaned,
C=the file is closed)

(quarters are 1=NW 2=NE 3=SW 4=SE)

(quarters are smallest to largest)

(NAD83 UTM in meters)

(In feet)

POD Number	POD Sub-Code	basin	County	Q 64	Q 16	Q 4	Sec	Tws	Rng	X	Y	Distance	Depth Well	Depth Water	Water Column
RA 11857 POD1			ED	1	1	2	05	18S	26E	577784	3625988	3494	235	95	140

Average Depth to Water: **95 feet**

Minimum Depth: **95 feet**

Maximum Depth: **95 feet**

Record Count: 1

UTM NAD83 Radius Search (in meters):

Easting (X): 574362

Northing (Y): 3626695

Radius: 3500

The data is furnished by the NMOSE/ISC and is accepted by the recipient with the expressed understanding that the OSE/ISC make no warranties, expressed or implied, concerning the accuracy, completeness, reliability, usability, or suitability for any particular purpose of the data.

ATTACHMENT III
Laboratory Analytical Results

August 03, 2017

Daniel Dominguez

Environmental Plus, Inc.

P.O. Box 1558

Eunice, NM 88231

RE: ASPEN 32 STATE #1 TRANSFER LINE

Enclosed are the results of analyses for samples received by the laboratory on 07/28/17 15:43.

Cardinal Laboratories is accredited through Texas NELAP under certificate number T104704398-16-8. Accreditation applies to drinking water, non-potable water and solid and chemical materials. All accredited analytes are denoted by an asterisk (*). For a complete list of accredited analytes and matrices visit the TCEQ website at www.tceq.texas.gov/field/qa/lab_accred_certif.html.

Cardinal Laboratories is accredited through the State of Colorado Department of Public Health and Environment for:

Method EPA 552.2	Haloacetic Acids (HAA-5)
Method EPA 524.2	Total Trihalomethanes (TTHM)
Method EPA 524.4	Regulated VOCs (V1, V2, V3)

Accreditation applies to public drinking water matrices.

This report meets NELAP requirements and is made up of a cover page, analytical results, and a copy of the original chain-of-custody. If you have any questions concerning this report, please feel free to contact me.

Sincerely,



Celey D. Keene

Lab Director/Quality Manager

Analytical Results For:

Environmental Plus, Inc.
Daniel Dominguez
P.O. Box 1558
Eunice NM, 88231
Fax To: (505) 394-2601

Received:	07/28/2017	Sampling Date:	07/25/2017
Reported:	08/03/2017	Sampling Type:	Soil
Project Name:	ASPEN 32 STATE #1 TRANSFER LINE	Sampling Condition:	Cool & Intact
Project Number:	NONE GIVEN	Sample Received By:	Jodi Henson
Project Location:	UL-I SEC. 6, T18S, R28E		

Sample ID: SP 1 (SURFACE) (H701983-01)

BTX 8021B		mg/kg		Analyzed By: MS					
Analyte	Result	Reporting Limit	Analyzed	Method Blank	BS	% Recovery	True Value QC	RPD	Qualifier
Benzene*	<0.050	0.050	07/31/2017	ND	2.13	107	2.00	0.340	
Toluene*	<0.050	0.050	07/31/2017	ND	1.98	99.1	2.00	0.837	
Ethylbenzene*	<0.050	0.050	07/31/2017	ND	2.07	104	2.00	0.0768	
Total Xylenes*	<0.150	0.150	07/31/2017	ND	6.23	104	6.00	0.614	
Total BTX	<0.300	0.300	07/31/2017	ND					

Surrogate: 4-Bromofluorobenzene (PID) 100 % 72-148

Chloride, SM4500Cl-B		mg/kg		Analyzed By: AC					
Analyte	Result	Reporting Limit	Analyzed	Method Blank	BS	% Recovery	True Value QC	RPD	Qualifier
Chloride	7060	16.0	07/31/2017	ND	432	108	400	0.00	

TPH 8015M		mg/kg		Analyzed By: MS						S-06
Analyte	Result	Reporting Limit	Analyzed	Method Blank	BS	% Recovery	True Value QC	RPD	Qualifier	
GRO C6-C10	<50.0	50.0	08/01/2017	ND	200	99.8	200	2.36		
DRO >C10-C28	10500	50.0	08/01/2017	ND	207	103	200	2.64		
EXT DRO >C28-C36	3480	50.0	08/01/2017	ND						

Surrogate: 1-Chlorooctane 81.2 % 28.3-164

Surrogate: 1-Chlorooctadecane 406 % 34.7-157

Cardinal Laboratories

*=Accredited Analyte

PLEASE NOTE: Liability and Damages. Cardinal's liability and client's exclusive remedy for any claim arising, whether based in contract or tort, shall be limited to the amount paid by client for analyses. All claims, including those for negligence and any other cause whatsoever shall be deemed waived unless made in writing and received by Cardinal within thirty (30) days after completion of the applicable service. In no event shall Cardinal be liable for incidental or consequential damages, including, without limitation, business interruptions, loss of use, or loss of profits incurred by client, its subsidiaries, affiliates or successors arising out of or related to the performance of the services hereunder by Cardinal, regardless of whether such claim is based upon any of the above stated reasons or otherwise. Results relate only to the samples identified above. This report shall not be reproduced except in full with written approval of Cardinal Laboratories.



Celey D. Keene, Lab Director/Quality Manager

Analytical Results For:

Environmental Plus, Inc.
Daniel Dominguez
P.O. Box 1558
Eunice NM, 88231
Fax To: (505) 394-2601

Received: 07/28/2017
Reported: 08/03/2017
Project Name: ASPEN 32 STATE #1 TRANSFER LINE
Project Number: NONE GIVEN
Project Location: UL-I SEC. 6, T18S, R28E

Sampling Date: 07/25/2017
Sampling Type: Soil
Sampling Condition: Cool & Intact
Sample Received By: Jodi Henson

Sample ID: SP 1 (18') (H701983-02)

BTEx 8021B		mg/kg		Analyzed By: MS					
Analyte	Result	Reporting Limit	Analyzed	Method Blank	BS	% Recovery	True Value QC	RPD	Qualifier
Benzene*	<0.050	0.050	07/31/2017	ND	2.13	107	2.00	0.340	
Toluene*	<0.050	0.050	07/31/2017	ND	1.98	99.1	2.00	0.837	
Ethylbenzene*	<0.050	0.050	07/31/2017	ND	2.07	104	2.00	0.0768	
Total Xylenes*	<0.150	0.150	07/31/2017	ND	6.23	104	6.00	0.614	
Total BTEX	<0.300	0.300	07/31/2017	ND					

Surrogate: 4-Bromofluorobenzene (PID) 102 % 72-148

Chloride, SM4500Cl-B		mg/kg		Analyzed By: AC					
Analyte	Result	Reporting Limit	Analyzed	Method Blank	BS	% Recovery	True Value QC	RPD	Qualifier
Chloride	128	16.0	07/31/2017	ND	432	108	400	0.00	

TPH 8015M		mg/kg		Analyzed By: MS					
Analyte	Result	Reporting Limit	Analyzed	Method Blank	BS	% Recovery	True Value QC	RPD	Qualifier
GRO C6-C10	<10.0	10.0	07/31/2017	ND	200	99.8	200	2.36	
DRO >C10-C28	<10.0	10.0	07/31/2017	ND	207	103	200	2.64	
EXT DRO >C28-C36	<10.0	10.0	07/31/2017	ND					

Surrogate: 1-Chlorooctane 83.0 % 28.3-164

Surrogate: 1-Chlorooctadecane 87.8 % 34.7-157

Cardinal Laboratories

*=Accredited Analyte

PLEASE NOTE: Liability and Damages. Cardinal's liability and client's exclusive remedy for any claim arising, whether based in contract or tort, shall be limited to the amount paid by client for analyses. All claims, including those for negligence and any other cause whatsoever shall be deemed waived unless made in writing and received by Cardinal within thirty (30) days after completion of the applicable service. In no event shall Cardinal be liable for incidental or consequential damages, including, without limitation, business interruptions, loss of use, or loss of profits incurred by client, its subsidiaries, affiliates or successors arising out of or related to the performance of the services hereunder by Cardinal, regardless of whether such claim is based upon any of the above stated reasons or otherwise. Results relate only to the samples identified above. This report shall not be reproduced except in full with written approval of Cardinal Laboratories.



Celey D. Keene, Lab Director/Quality Manager

Analytical Results For:

Environmental Plus, Inc.
Daniel Dominguez
P.O. Box 1558
Eunice NM, 88231
Fax To: (505) 394-2601

Received: 07/28/2017
Reported: 08/03/2017
Project Name: ASPEN 32 STATE #1 TRANSFER LINE
Project Number: NONE GIVEN
Project Location: UL-I SEC. 6, T18S, R28E

Sampling Date: 07/25/2017
Sampling Type: Soil
Sampling Condition: Cool & Intact
Sample Received By: Jodi Henson

Sample ID: SP 2 (SURFACE) (H701983-03)

BTX 8021B		mg/kg		Analyzed By: MS					
Analyte	Result	Reporting Limit	Analyzed	Method Blank	BS	% Recovery	True Value QC	RPD	Qualifier
Benzene*	<0.050	0.050	07/31/2017	ND	2.13	107	2.00	0.340	
Toluene*	<0.050	0.050	07/31/2017	ND	1.98	99.1	2.00	0.837	
Ethylbenzene*	<0.050	0.050	07/31/2017	ND	2.07	104	2.00	0.0768	
Total Xylenes*	<0.150	0.150	07/31/2017	ND	6.23	104	6.00	0.614	
Total BTX	<0.300	0.300	07/31/2017	ND					

Surrogate: 4-Bromofluorobenzene (PID) 103 % 72-148

Chloride, SM4500Cl-B		mg/kg		Analyzed By: AC						
Analyte	Result	Reporting Limit	Analyzed	Method Blank	BS	% Recovery	True Value QC	RPD	Qualifier	
Chloride	22000	16.0	07/31/2017	ND	432	108	400	0.00		

TPH 8015M		mg/kg		Analyzed By: MS					
Analyte	Result	Reporting Limit	Analyzed	Method Blank	BS	% Recovery	True Value QC	RPD	Qualifier
GRO C6-C10	<10.0	10.0	07/31/2017	ND	200	99.8	200	2.36	
DRO >C10-C28	<10.0	10.0	07/31/2017	ND	207	103	200	2.64	
EXT DRO >C28-C36	<10.0	10.0	07/31/2017	ND					

Surrogate: 1-Chlorooctane 89.7 % 28.3-164

Surrogate: 1-Chlorooctadecane 90.7 % 34.7-157

Cardinal Laboratories

*=Accredited Analyte

PLEASE NOTE: Liability and Damages. Cardinal's liability and client's exclusive remedy for any claim arising, whether based in contract or tort, shall be limited to the amount paid by client for analyses. All claims, including those for negligence and any other cause whatsoever shall be deemed waived unless made in writing and received by Cardinal within thirty (30) days after completion of the applicable service. In no event shall Cardinal be liable for incidental or consequential damages, including, without limitation, business interruptions, loss of use, or loss of profits incurred by client, its subsidiaries, affiliates or successors arising out of or related to the performance of the services hereunder by Cardinal, regardless of whether such claim is based upon any of the above stated reasons or otherwise. Results relate only to the samples identified above. This report shall not be reproduced except in full with written approval of Cardinal Laboratories.



Celey D. Keene, Lab Director/Quality Manager

Analytical Results For:

Environmental Plus, Inc.
Daniel Dominguez
P.O. Box 1558
Eunice NM, 88231
Fax To: (505) 394-2601

Received: 07/28/2017
Reported: 08/03/2017
Project Name: ASPEN 32 STATE #1 TRANSFER LINE
Project Number: NONE GIVEN
Project Location: UL-I SEC. 6, T18S, R28E

Sampling Date: 07/25/2017
Sampling Type: Soil
Sampling Condition: Cool & Intact
Sample Received By: Jodi Henson

Sample ID: SP 2 (23') (H701983-04)

BTX 8021B		mg/kg		Analyzed By: MS					
Analyte	Result	Reporting Limit	Analyzed	Method Blank	BS	% Recovery	True Value QC	RPD	Qualifier
Benzene*	<0.050	0.050	07/31/2017	ND	2.13	107	2.00	0.340	
Toluene*	<0.050	0.050	07/31/2017	ND	1.98	99.1	2.00	0.837	
Ethylbenzene*	<0.050	0.050	07/31/2017	ND	2.07	104	2.00	0.0768	
Total Xylenes*	<0.150	0.150	07/31/2017	ND	6.23	104	6.00	0.614	
Total BTX	<0.300	0.300	07/31/2017	ND					

Surrogate: 4-Bromofluorobenzene (PID) 103 % 72-148

Chloride, SM4500CI-B		mg/kg		Analyzed By: AC						
Analyte	Result	Reporting Limit	Analyzed	Method Blank	BS	% Recovery	True Value QC	RPD	Qualifier	
Chloride	48.0	16.0	07/31/2017	ND	432	108	400	0.00		

TPH 8015M		mg/kg		Analyzed By: MS					
Analyte	Result	Reporting Limit	Analyzed	Method Blank	BS	% Recovery	True Value QC	RPD	Qualifier
GRO C6-C10	<10.0	10.0	07/31/2017	ND	200	99.8	200	2.36	
DRO >C10-C28	<10.0	10.0	07/31/2017	ND	207	103	200	2.64	
EXT DRO >C28-C36	<10.0	10.0	07/31/2017	ND					

Surrogate: 1-Chlorooctane 76.7 % 28.3-164

Surrogate: 1-Chlorooctadecane 75.9 % 34.7-157

Cardinal Laboratories

*=Accredited Analyte

PLEASE NOTE: Liability and Damages. Cardinal's liability and client's exclusive remedy for any claim arising, whether based in contract or tort, shall be limited to the amount paid by client for analyses. All claims, including those for negligence and any other cause whatsoever shall be deemed waived unless made in writing and received by Cardinal within thirty (30) days after completion of the applicable service. In no event shall Cardinal be liable for incidental or consequential damages, including, without limitation, business interruptions, loss of use, or loss of profits incurred by client, its subsidiaries, affiliates or successors arising out of or related to the performance of the services hereunder by Cardinal, regardless of whether such claim is based upon any of the above stated reasons or otherwise. Results relate only to the samples identified above. This report shall not be reproduced except in full with written approval of Cardinal Laboratories.



Celey D. Keene, Lab Director/Quality Manager

Analytical Results For:

Environmental Plus, Inc.
Daniel Dominguez
P.O. Box 1558
Eunice NM, 88231
Fax To: (505) 394-2601

Received: 07/28/2017
Reported: 08/03/2017
Project Name: ASPEN 32 STATE #1 TRANSFER LINE
Project Number: NONE GIVEN
Project Location: UL-I SEC. 6, T18S, R28E

Sampling Date: 07/28/2017
Sampling Type: Soil
Sampling Condition: Cool & Intact
Sample Received By: Jodi Henson

Sample ID: SP 3 (SURFACE) (H701983-05)

BTX 8021B		mg/kg		Analyzed By: MS						
Analyte	Result	Reporting Limit	Analyzed	Method Blank	BS	% Recovery	True Value QC	RPD	Qualifier	
Benzene*	<0.050	0.050	08/01/2017	ND	2.13	107	2.00	0.340		
Toluene*	0.050	0.050	08/01/2017	ND	1.98	99.1	2.00	0.837		
Ethylbenzene*	<0.050	0.050	08/01/2017	ND	2.07	104	2.00	0.0768		
Total Xylenes*	<0.150	0.150	08/01/2017	ND	6.23	104	6.00	0.614		
Total BTX	<0.300	0.300	08/01/2017	ND						

Surrogate: 4-Bromofluorobenzene (PID) 102 % 72-148

Chloride, SM4500Cl-B		mg/kg		Analyzed By: AC						
Analyte	Result	Reporting Limit	Analyzed	Method Blank	BS	% Recovery	True Value QC	RPD	Qualifier	
Chloride	24400	16.0	07/31/2017	ND	432	108	400	0.00		

TPH 8015M		mg/kg		Analyzed By: MS					
Analyte	Result	Reporting Limit	Analyzed	Method Blank	BS	% Recovery	True Value QC	RPD	Qualifier
GRO C6-C10	<10.0	10.0	07/31/2017	ND	200	99.8	200	2.36	
DRO >C10-C28	<10.0	10.0	07/31/2017	ND	207	103	200	2.64	
EXT DRO >C28-C36	<10.0	10.0	07/31/2017	ND					

Surrogate: 1-Chlorooctane 101 % 28.3-164

Surrogate: 1-Chlorooctadecane 103 % 34.7-157

Cardinal Laboratories

*=Accredited Analyte

PLEASE NOTE: Liability and Damages. Cardinal's liability and client's exclusive remedy for any claim arising, whether based in contract or tort, shall be limited to the amount paid by client for analyses. All claims, including those for negligence and any other cause whatsoever shall be deemed waived unless made in writing and received by Cardinal within thirty (30) days after completion of the applicable service. In no event shall Cardinal be liable for incidental or consequential damages, including, without limitation, business interruptions, loss of use, or loss of profits incurred by client, its subsidiaries, affiliates or successors arising out of or related to the performance of the services hereunder by Cardinal, regardless of whether such claim is based upon any of the above stated reasons or otherwise. Results relate only to the samples identified above. This report shall not be reproduced except in full with written approval of Cardinal Laboratories.



Celey D. Keene, Lab Director/Quality Manager

Analytical Results For:

Environmental Plus, Inc.
Daniel Dominguez
P.O. Box 1558
Eunice NM, 88231
Fax To: (505) 394-2601

Received: 07/28/2017
Reported: 08/03/2017
Project Name: ASPEN 32 STATE #1 TRANSFER LINE
Project Number: NONE GIVEN
Project Location: UL-I SEC. 6, T18S, R28E

Sampling Date: 07/28/2017
Sampling Type: Soil
Sampling Condition: Cool & Intact
Sample Received By: Jodi Henson

Sample ID: SP 3 (22') (H701983-06)

BTEx 8021B		mg/kg		Analyzed By: MS					
Analyte	Result	Reporting Limit	Analyzed	Method Blank	BS	% Recovery	True Value QC	RPD	Qualifier
Benzene*	<0.050	0.050	08/01/2017	ND	2.13	107	2.00	0.340	
Toluene*	<0.050	0.050	08/01/2017	ND	1.98	99.1	2.00	0.837	
Ethylbenzene*	<0.050	0.050	08/01/2017	ND	2.07	104	2.00	0.0768	
Total Xylenes*	<0.150	0.150	08/01/2017	ND	6.23	104	6.00	0.614	
Total BTEx	<0.300	0.300	08/01/2017	ND					

Surrogate: 4-Bromofluorobenzene (PID) 102 % 72-148

Chloride, SM4500CI-B		mg/kg		Analyzed By: AC					
Analyte	Result	Reporting Limit	Analyzed	Method Blank	BS	% Recovery	True Value QC	RPD	Qualifier
Chloride	64.0	16.0	07/31/2017	ND	432	108	400	0.00	

TPH 8015M		mg/kg		Analyzed By: MS					
Analyte	Result	Reporting Limit	Analyzed	Method Blank	BS	% Recovery	True Value QC	RPD	Qualifier
GRO C6-C10	<10.0	10.0	07/31/2017	ND	200	99.8	200	2.36	
DRO >C10-C28	<10.0	10.0	07/31/2017	ND	207	103	200	2.64	
EXT DRO >C28-C36	<10.0	10.0	07/31/2017	ND					

Surrogate: 1-Chlorooctane 85.3 % 28.3-164

Surrogate: 1-Chlorooctadecane 87.7 % 34.7-157

Cardinal Laboratories

*=Accredited Analyte

PLEASE NOTE: Liability and Damages. Cardinal's liability and client's exclusive remedy for any claim arising, whether based in contract or tort, shall be limited to the amount paid by client for analyses. All claims, including those for negligence and any other cause whatsoever shall be deemed waived unless made in writing and received by Cardinal within thirty (30) days after completion of the applicable service. In no event shall Cardinal be liable for incidental or consequential damages, including, without limitation, business interruptions, loss of use, or loss of profits incurred by client, its subsidiaries, affiliates or successors arising out of or related to the performance of the services hereunder by Cardinal, regardless of whether such claim is based upon any of the above stated reasons or otherwise. Results relate only to the samples identified above. This report shall not be reproduced except in full with written approval of Cardinal Laboratories.



Celey D. Keene, Lab Director/Quality Manager

Analytical Results For:

Environmental Plus, Inc.
Daniel Dominguez
P.O. Box 1558
Eunice NM, 88231
Fax To: (505) 394-2601

Received: 07/28/2017
Reported: 08/03/2017
Project Name: ASPEN 32 STATE #1 TRANSFER LINE
Project Number: NONE GIVEN
Project Location: UL-I SEC. 6, T18S, R28E

Sampling Date: 07/28/2017
Sampling Type: Soil
Sampling Condition: Cool & Intact
Sample Received By: Jodi Henson

Sample ID: SP 4 (SURFACE) (H701983-07)

BTEx 8021B		mg/kg		Analyzed By: MS						
Analyte	Result	Reporting Limit	Analyzed	Method Blank	BS	% Recovery	True Value QC	RPD	Qualifier	
Benzene*	<0.050	0.050	08/01/2017	ND	2.13	107	2.00	0.340		
Toluene*	<0.050	0.050	08/01/2017	ND	1.98	99.1	2.00	0.837		
Ethylbenzene*	<0.050	0.050	08/01/2017	ND	2.07	104	2.00	0.0768		
Total Xylenes*	<0.150	0.150	08/01/2017	ND	6.23	104	6.00	0.614		
Total BTEx	<0.300	0.300	08/01/2017	ND						

Surrogate: 4-Bromofluorobenzene (PID) 103 % 72-148

Chloride, SM4500Cl-B		mg/kg		Analyzed By: AC						
Analyte	Result	Reporting Limit	Analyzed	Method Blank	BS	% Recovery	True Value QC	RPD	Qualifier	
Chloride	23600	16.0	07/31/2017	ND	432	108	400	0.00		

TPH 8015M		mg/kg		Analyzed By: MS					
Analyte	Result	Reporting Limit	Analyzed	Method Blank	BS	% Recovery	True Value QC	RPD	Qualifier
GRO C6-C10	<10.0	10.0	07/31/2017	ND	200	99.8	200	2.36	
DRO >C10-C28	<10.0	10.0	07/31/2017	ND	207	103	200	2.64	
EXT DRO >C28-C36	<10.0	10.0	07/31/2017	ND					

Surrogate: 1-Chlorooctane 108 % 28.3-164

Surrogate: 1-Chlorooctadecane 111 % 34.7-157

Cardinal Laboratories

*=Accredited Analyte

PLEASE NOTE: Liability and Damages. Cardinal's liability and client's exclusive remedy for any claim arising, whether based in contract or tort, shall be limited to the amount paid by client for analyses. All claims, including those for negligence and any other cause whatsoever shall be deemed waived unless made in writing and received by Cardinal within thirty (30) days after completion of the applicable service. In no event shall Cardinal be liable for incidental or consequential damages, including, without limitation, business interruptions, loss of use, or loss of profits incurred by client, its subsidiaries, affiliates or successors arising out of or related to the performance of the services hereunder by Cardinal, regardless of whether such claim is based upon any of the above stated reasons or otherwise. Results relate only to the samples identified above. This report shall not be reproduced except in full with written approval of Cardinal Laboratories.



Celey D. Keene, Lab Director/Quality Manager

Analytical Results For:

Environmental Plus, Inc.
Daniel Dominguez
P.O. Box 1558
Eunice NM, 88231
Fax To: (505) 394-2601

Received:	07/28/2017	Sampling Date:	07/28/2017
Reported:	08/03/2017	Sampling Type:	Soil
Project Name:	ASPEN 32 STATE #1 TRANSFER LINE	Sampling Condition:	Cool & Intact
Project Number:	NONE GIVEN	Sample Received By:	Jodi Henson
Project Location:	UL-I SEC. 6, T18S, R28E		

Sample ID: SP 4 (20') (H701983-08)

BTEx 8021B		mg/kg		Analyzed By: MS						
Analyte	Result	Reporting Limit	Analyzed	Method Blank	BS	% Recovery	True Value QC	RPD	Qualifier	
Benzene*	<0.050	0.050	08/01/2017	ND	2.13	107	2.00	0.340		
Toluene*	<0.050	0.050	08/01/2017	ND	1.98	99.1	2.00	0.837		
Ethylbenzene*	<0.050	0.050	08/01/2017	ND	2.07	104	2.00	0.0768		
Total Xylenes*	<0.150	0.150	08/01/2017	ND	6.23	104	6.00	0.614		
Total BTEx	<0.300	0.300	08/01/2017	ND						

Surrogate: 4-Bromofluorobenzene (PID) 102 % 72-148

Chloride, SM4500Cl-B		mg/kg		Analyzed By: AC						
Analyte	Result	Reporting Limit	Analyzed	Method Blank	BS	% Recovery	True Value QC	RPD	Qualifier	
Chloride	112	16.0	07/31/2017	ND	432	108	400	0.00		

TPH 8015M		mg/kg		Analyzed By: MS					
Analyte	Result	Reporting Limit	Analyzed	Method Blank	BS	% Recovery	True Value QC	RPD	Qualifier
GRO C6-C10	<10.0	10.0	07/31/2017	ND	200	99.8	200	2.36	
DRO >C10-C28	<10.0	10.0	07/31/2017	ND	207	103	200	2.64	
EXT DRO >C28-C36	<10.0	10.0	07/31/2017	ND					

Surrogate: 1-Chlorooctane 79.7 % 28.3-164

Surrogate: 1-Chlorooctadecane 76.6 % 34.7-157

Cardinal Laboratories

*=Accredited Analyte

PLEASE NOTE: Liability and Damages. Cardinal's liability and client's exclusive remedy for any claim arising, whether based in contract or tort, shall be limited to the amount paid by client for analyses. All claims, including those for negligence and any other cause whatsoever shall be deemed waived unless made in writing and received by Cardinal within thirty (30) days after completion of the applicable service. In no event shall Cardinal be liable for incidental or consequential damages, including, without limitation, business interruptions, loss of use, or loss of profits incurred by client, its subsidiaries, affiliates or successors arising out of or related to the performance of the services hereunder by Cardinal, regardless of whether such claim is based upon any of the above stated reasons or otherwise. Results relate only to the samples identified above. This report shall not be reproduced except in full with written approval of Cardinal Laboratories.



Celey D. Keene, Lab Director/Quality Manager

Analytical Results For:

Environmental Plus, Inc.
Daniel Dominguez
P.O. Box 1558
Eunice NM, 88231
Fax To: (505) 394-2601

Received: 07/28/2017
Reported: 08/03/2017
Project Name: ASPEN 32 STATE #1 TRANSFER LINE
Project Number: NONE GIVEN
Project Location: UL-I SEC. 6, T18S, R28E

Sampling Date: 07/26/2017
Sampling Type: Soil
Sampling Condition: Cool & Intact
Sample Received By: Jodi Henson

Sample ID: SP 5 (SURFACE) (H701983-09)

BTEx 8021B		mg/kg		Analyzed By: MS						
Analyte	Result	Reporting Limit	Analyzed	Method Blank	BS	% Recovery	True Value QC	RPD	Qualifier	
Benzene*	<0.050	0.050	08/01/2017	ND	2.13	107	2.00	0.340		
Toluene*	<0.050	0.050	08/01/2017	ND	1.98	99.1	2.00	0.837		
Ethylbenzene*	<0.050	0.050	08/01/2017	ND	2.07	104	2.00	0.0768		
Total Xylenes*	<0.150	0.150	08/01/2017	ND	6.23	104	6.00	0.614		
Total BTEx	<0.300	0.300	08/01/2017	ND						

Surrogate: 4-Bromofluorobenzene (PID) 102 % 72-148

Chloride, SM4500Cl-B		mg/kg		Analyzed By: AC						
Analyte	Result	Reporting Limit	Analyzed	Method Blank	BS	% Recovery	True Value QC	RPD	Qualifier	
Chloride	64.0	16.0	07/31/2017	ND	432	108	400	0.00		

TPH 8015M		mg/kg		Analyzed By: MS					
Analyte	Result	Reporting Limit	Analyzed	Method Blank	BS	% Recovery	True Value QC	RPD	Qualifier
GRO C6-C10	<10.0	10.0	07/31/2017	ND	200	99.8	200	2.36	
DRO >C10-C28	<10.0	10.0	07/31/2017	ND	207	103	200	2.64	
EXT DRO >C28-C36	<10.0	10.0	07/31/2017	ND					

Surrogate: 1-Chlorooctane 76.0 % 28.3-164

Surrogate: 1-Chlorooctadecane 74.0 % 34.7-157

Cardinal Laboratories

*=Accredited Analyte

PLEASE NOTE: Liability and Damages. Cardinal's liability and client's exclusive remedy for any claim arising, whether based in contract or tort, shall be limited to the amount paid by client for analyses. All claims, including those for negligence and any other cause whatsoever shall be deemed waived unless made in writing and received by Cardinal within thirty (30) days after completion of the applicable service. In no event shall Cardinal be liable for incidental or consequential damages, including, without limitation, business interruptions, loss of use, or loss of profits incurred by client, its subsidiaries, affiliates or successors arising out of or related to the performance of the services hereunder by Cardinal, regardless of whether such claim is based upon any of the above stated reasons or otherwise. Results relate only to the samples identified above. This report shall not be reproduced except in full with written approval of Cardinal Laboratories.



Celey D. Keene, Lab Director/Quality Manager

Analytical Results For:

Environmental Plus, Inc.
Daniel Dominguez
P.O. Box 1558
Eunice NM, 88231
Fax To: (505) 394-2601

Received:	07/28/2017	Sampling Date:	07/26/2017
Reported:	08/03/2017	Sampling Type:	Soil
Project Name:	ASPEN 32 STATE #1 TRANSFER LINE	Sampling Condition:	Cool & Intact
Project Number:	NONE GIVEN	Sample Received By:	Jodi Henson
Project Location:	UL-I SEC. 6, T18S, R28E		

Sample ID: SP 5 (1') (H701983-10)

BTEx 8021B		mg/kg		Analyzed By: MS						
Analyte	Result	Reporting Limit	Analyzed	Method Blank	BS	% Recovery	True Value QC	RPD	Qualifier	
Benzene*	<0.050	0.050	08/01/2017	ND	2.03	102	2.00	1.98		
Toluene*	<0.050	0.050	08/01/2017	ND	1.89	94.5	2.00	2.60		
Ethylbenzene*	<0.050	0.050	08/01/2017	ND	1.95	97.7	2.00	1.12		
Total Xylenes*	<0.150	0.150	08/01/2017	ND	5.81	96.8	6.00	0.104		
Total BTEX	<0.300	0.300	08/01/2017	ND						

Surrogate: 4-Bromofluorobenzene (PID) 99.0 % 72-148

Chloride, SM4500Cl-B		mg/kg		Analyzed By: AC						
Analyte	Result	Reporting Limit	Analyzed	Method Blank	BS	% Recovery	True Value QC	RPD	Qualifier	
Chloride	64.0	16.0	07/31/2017	ND	432	108	400	0.00		

TPH 8015M		mg/kg		Analyzed By: MS					
Analyte	Result	Reporting Limit	Analyzed	Method Blank	BS	% Recovery	True Value QC	RPD	Qualifier
GRO C6-C10	<10.0	10.0	07/31/2017	ND	200	99.8	200	2.36	
DRO >C10-C28	<10.0	10.0	07/31/2017	ND	207	103	200	2.64	
EXT DRO >C28-C36	<10.0	10.0	07/31/2017	ND					

Surrogate: 1-Chlorooctane 81.0 % 28.3-164

Surrogate: 1-Chlorooctadecane 80.1 % 34.7-157

Cardinal Laboratories

*=Accredited Analyte

PLEASE NOTE: Liability and Damages. Cardinal's liability and client's exclusive remedy for any claim arising, whether based in contract or tort, shall be limited to the amount paid by client for analyses. All claims, including those for negligence and any other cause whatsoever shall be deemed waived unless made in writing and received by Cardinal within thirty (30) days after completion of the applicable service. In no event shall Cardinal be liable for incidental or consequential damages, including, without limitation, business interruptions, loss of use, or loss of profits incurred by client, its subsidiaries, affiliates or successors arising out of or related to the performance of the services hereunder by Cardinal, regardless of whether such claim is based upon any of the above stated reasons or otherwise. Results relate only to the samples identified above. This report shall not be reproduced except in full with written approval of Cardinal Laboratories.



Celey D. Keene, Lab Director/Quality Manager

Analytical Results For:

Environmental Plus, Inc.
Daniel Dominguez
P.O. Box 1558
Eunice NM, 88231
Fax To: (505) 394-2601

Received:	07/28/2017	Sampling Date:	07/26/2017
Reported:	08/03/2017	Sampling Type:	Soil
Project Name:	ASPEN 32 STATE #1 TRANSFER LINE	Sampling Condition:	Cool & Intact
Project Number:	NONE GIVEN	Sample Received By:	Jodi Henson
Project Location:	UL-I SEC. 6, T18S, R28E		

Sample ID: SP 6 (SURFACE) (H701983-11)

BTX 8021B		mg/kg		Analyzed By: MS					
Analyte	Result	Reporting Limit	Analyzed	Method Blank	BS	% Recovery	True Value QC	RPD	Qualifier
Benzene*	<0.050	0.050	08/01/2017	ND	2.03	102	2.00	1.98	
Toluene*	<0.050	0.050	08/01/2017	ND	1.89	94.5	2.00	2.60	
Ethylbenzene*	<0.050	0.050	08/01/2017	ND	1.95	97.7	2.00	1.12	
Total Xylenes*	<0.150	0.150	08/01/2017	ND	5.81	96.8	6.00	0.104	
Total BTX	<0.300	0.300	08/01/2017	ND					

Surrogate: 4-Bromofluorobenzene (PID) 101 % 72-148

Chloride, SM4500CI-B		mg/kg		Analyzed By: AC						
Analyte	Result	Reporting Limit	Analyzed	Method Blank	BS	% Recovery	True Value QC	RPD	Qualifier	
Chloride	32.0	16.0	07/31/2017	ND	432	108	400	0.00		

TPH 8015M		mg/kg		Analyzed By: MS					
Analyte	Result	Reporting Limit	Analyzed	Method Blank	BS	% Recovery	True Value QC	RPD	Qualifier
GRO C6-C10	<10.0	10.0	07/31/2017	ND	200	99.8	200	2.36	
DRO >C10-C28	<10.0	10.0	07/31/2017	ND	207	103	200	2.64	
EXT DRO >C28-C36	<10.0	10.0	07/31/2017	ND					

Surrogate: 1-Chlorooctane 90.9 % 28.3-164

Surrogate: 1-Chlorooctadecane 92.4 % 34.7-157

Cardinal Laboratories

*=Accredited Analyte

PLEASE NOTE: Liability and Damages. Cardinal's liability and client's exclusive remedy for any claim arising, whether based in contract or tort, shall be limited to the amount paid by client for analyses. All claims, including those for negligence and any other cause whatsoever shall be deemed waived unless made in writing and received by Cardinal within thirty (30) days after completion of the applicable service. In no event shall Cardinal be liable for incidental or consequential damages, including, without limitation, business interruptions, loss of use, or loss of profits incurred by client, its subsidiaries, affiliates or successors arising out of or related to the performance of the services hereunder by Cardinal, regardless of whether such claim is based upon any of the above stated reasons or otherwise. Results relate only to the samples identified above. This report shall not be reproduced except in full with written approval of Cardinal Laboratories.



Celey D. Keene, Lab Director/Quality Manager

Analytical Results For:

Environmental Plus, Inc.
Daniel Dominguez
P.O. Box 1558
Eunice NM, 88231
Fax To: (505) 394-2601

Received: 07/28/2017
Reported: 08/03/2017
Project Name: ASPEN 32 STATE #1 TRANSFER LINE
Project Number: NONE GIVEN
Project Location: UL-I SEC. 6, T18S, R28E

Sampling Date: 07/26/2017
Sampling Type: Soil
Sampling Condition: Cool & Intact
Sample Received By: Jodi Henson

Sample ID: SP 6 (1') (H701983-12)

BTX 8021B		mg/kg		Analyzed By: MS					
Analyte	Result	Reporting Limit	Analyzed	Method Blank	BS	% Recovery	True Value QC	RPD	Qualifier
Benzene*	<0.050	0.050	08/01/2017	ND	2.03	102	2.00	1.98	
Toluene*	<0.050	0.050	08/01/2017	ND	1.89	94.5	2.00	2.60	
Ethylbenzene*	<0.050	0.050	08/01/2017	ND	1.95	97.7	2.00	1.12	
Total Xylenes*	<0.150	0.150	08/01/2017	ND	5.81	96.8	6.00	0.104	
Total BTX	<0.300	0.300	08/01/2017	ND					

Surrogate: 4-Bromofluorobenzene (PID) 102 % 72-148

Chloride, SM4500Cl-B		mg/kg		Analyzed By: AC					
Analyte	Result	Reporting Limit	Analyzed	Method Blank	BS	% Recovery	True Value QC	RPD	Qualifier
Chloride	64.0	16.0	07/31/2017	ND	432	108	400	0.00	

TPH 8015M		mg/kg		Analyzed By: MS					
Analyte	Result	Reporting Limit	Analyzed	Method Blank	BS	% Recovery	True Value QC	RPD	Qualifier
GRO C6-C10	<10.0	10.0	07/31/2017	ND	200	99.8	200	2.36	
DRO >C10-C28	<10.0	10.0	07/31/2017	ND	207	103	200	2.64	
EXT DRO >C28-C36	<10.0	10.0	07/31/2017	ND					

Surrogate: 1-Chlorooctane 97.4 % 28.3-164

Surrogate: 1-Chlorooctadecane 96.0 % 34.7-157

Cardinal Laboratories

*=Accredited Analyte

PLEASE NOTE: Liability and Damages. Cardinal's liability and client's exclusive remedy for any claim arising, whether based in contract or tort, shall be limited to the amount paid by client for analyses. All claims, including those for negligence and any other cause whatsoever shall be deemed waived unless made in writing and received by Cardinal within thirty (30) days after completion of the applicable service. In no event shall Cardinal be liable for incidental or consequential damages, including, without limitation, business interruptions, loss of use, or loss of profits incurred by client, its subsidiaries, affiliates or successors arising out of or related to the performance of the services hereunder by Cardinal, regardless of whether such claim is based upon any of the above stated reasons or otherwise. Results relate only to the samples identified above. This report shall not be reproduced except in full with written approval of Cardinal Laboratories.



Celey D. Keene, Lab Director/Quality Manager

Analytical Results For:

Environmental Plus, Inc.
Daniel Dominguez
P.O. Box 1558
Eunice NM, 88231
Fax To: (505) 394-2601

Received:	07/28/2017	Sampling Date:	07/26/2017
Reported:	08/03/2017	Sampling Type:	Soil
Project Name:	ASPEN 32 STATE #1 TRANSFER LINE	Sampling Condition:	Cool & Intact
Project Number:	NONE GIVEN	Sample Received By:	Jodi Henson
Project Location:	UL-I SEC. 6, T18S, R28E		

Sample ID: SP 7 (SURFACE) (H701983-13)

BTX 8021B		mg/kg		Analyzed By: MS					
Analyte	Result	Reporting Limit	Analyzed	Method Blank	BS	% Recovery	True Value QC	RPD	Qualifier
Benzene*	<0.050	0.050	08/01/2017	ND	2.03	102	2.00	1.98	
Toluene*	<0.050	0.050	08/01/2017	ND	1.89	94.5	2.00	2.60	
Ethylbenzene*	<0.050	0.050	08/01/2017	ND	1.95	97.7	2.00	1.12	
Total Xylenes*	<0.150	0.150	08/01/2017	ND	5.81	96.8	6.00	0.104	
Total BTX	<0.300	0.300	08/01/2017	ND					

Surrogate: 4-Bromofluorobenzene (PID) 102 % 72-148

Chloride, SM4500CI-B		mg/kg		Analyzed By: AC					
Analyte	Result	Reporting Limit	Analyzed	Method Blank	BS	% Recovery	True Value QC	RPD	Qualifier
Chloride	16.0	16.0	07/31/2017	ND	432	108	400	0.00	

TPH 8015M		mg/kg		Analyzed By: MS					
Analyte	Result	Reporting Limit	Analyzed	Method Blank	BS	% Recovery	True Value QC	RPD	Qualifier
GRO C6-C10	<10.0	10.0	07/31/2017	ND	200	99.8	200	2.36	
DRO >C10-C28	<10.0	10.0	07/31/2017	ND	207	103	200	2.64	
EXT DRO >C28-C36	<10.0	10.0	07/31/2017	ND					

Surrogate: 1-Chlorooctane 87.8 % 28.3-164

Surrogate: 1-Chlorooctadecane 91.1 % 34.7-157

Cardinal Laboratories

*=Accredited Analyte

PLEASE NOTE: Liability and Damages. Cardinal's liability and client's exclusive remedy for any claim arising, whether based in contract or tort, shall be limited to the amount paid by client for analyses. All claims, including those for negligence and any other cause whatsoever shall be deemed waived unless made in writing and received by Cardinal within thirty (30) days after completion of the applicable service. In no event shall Cardinal be liable for incidental or consequential damages, including, without limitation, business interruptions, loss of use, or loss of profits incurred by client, its subsidiaries, affiliates or successors arising out of or related to the performance of the services hereunder by Cardinal, regardless of whether such claim is based upon any of the above stated reasons or otherwise. Results relate only to the samples identified above. This report shall not be reproduced except in full with written approval of Cardinal Laboratories.



Celey D. Keene, Lab Director/Quality Manager

Analytical Results For:

Environmental Plus, Inc.
Daniel Dominguez
P.O. Box 1558
Eunice NM, 88231
Fax To: (505) 394-2601

Received:	07/28/2017	Sampling Date:	07/26/2017
Reported:	08/03/2017	Sampling Type:	Soil
Project Name:	ASPEN 32 STATE #1 TRANSFER LINE	Sampling Condition:	Cool & Intact
Project Number:	NONE GIVEN	Sample Received By:	Jodi Henson
Project Location:	UL-I SEC. 6, T18S, R28E		

Sample ID: SP 7 (1') (H701983-14)

BTEx 8021B		mg/kg		Analyzed By: MS					
Analyte	Result	Reporting Limit	Analyzed	Method Blank	BS	% Recovery	True Value QC	RPD	Qualifier
Benzene*	<0.050	0.050	08/01/2017	ND	2.03	102	2.00	1.98	
Toluene*	<0.050	0.050	08/01/2017	ND	1.89	94.5	2.00	2.60	
Ethylbenzene*	<0.050	0.050	08/01/2017	ND	1.95	97.7	2.00	1.12	
Total Xylenes*	<0.150	0.150	08/01/2017	ND	5.81	96.8	6.00	0.104	
Total BTEX	<0.300	0.300	08/01/2017	ND					

Surrogate: 4-Bromofluorobenzene (PID) 101 % 72-148

Chloride, SM4500Cl-B		mg/kg		Analyzed By: AC					
Analyte	Result	Reporting Limit	Analyzed	Method Blank	BS	% Recovery	True Value QC	RPD	Qualifier
Chloride	32.0	16.0	07/31/2017	ND	432	108	400	0.00	

TPH 8015M		mg/kg		Analyzed By: MS					
Analyte	Result	Reporting Limit	Analyzed	Method Blank	BS	% Recovery	True Value QC	RPD	Qualifier
GRO C6-C10	<10.0	10.0	07/31/2017	ND	200	99.8	200	2.36	
DRO >C10-C28	<10.0	10.0	07/31/2017	ND	207	103	200	2.64	
EXT DRO >C28-C36	<10.0	10.0	07/31/2017	ND					

Surrogate: 1-Chlorooctane 87.7 % 28.3-164

Surrogate: 1-Chlorooctadecane 89.5 % 34.7-157

Cardinal Laboratories

*=Accredited Analyte

PLEASE NOTE: Liability and Damages. Cardinal's liability and client's exclusive remedy for any claim arising, whether based in contract or tort, shall be limited to the amount paid by client for analyses. All claims, including those for negligence and any other cause whatsoever shall be deemed waived unless made in writing and received by Cardinal within thirty (30) days after completion of the applicable service. In no event shall Cardinal be liable for incidental or consequential damages, including, without limitation, business interruptions, loss of use, or loss of profits incurred by client, its subsidiaries, affiliates or successors arising out of or related to the performance of the services hereunder by Cardinal, regardless of whether such claim is based upon any of the above stated reasons or otherwise. Results relate only to the samples identified above. This report shall not be reproduced except in full with written approval of Cardinal Laboratories.



Celey D. Keene, Lab Director/Quality Manager

Analytical Results For:

Environmental Plus, Inc.
Daniel Dominguez
P.O. Box 1558
Eunice NM, 88231
Fax To: (505) 394-2601

Received:	07/28/2017	Sampling Date:	07/26/2017
Reported:	08/03/2017	Sampling Type:	Soil
Project Name:	ASPEN 32 STATE #1 TRANSFER LINE	Sampling Condition:	Cool & Intact
Project Number:	NONE GIVEN	Sample Received By:	Jodi Henson
Project Location:	UL-I SEC. 6, T18S, R28E		

Sample ID: SP 8 (SURFACE) (H701983-15)

BTX 8021B		mg/kg		Analyzed By: MS					
Analyte	Result	Reporting Limit	Analyzed	Method Blank	BS	% Recovery	True Value QC	RPD	Qualifier
Benzene*	<0.050	0.050	08/01/2017	ND	2.03	102	2.00	1.98	
Toluene*	<0.050	0.050	08/01/2017	ND	1.89	94.5	2.00	2.60	
Ethylbenzene*	<0.050	0.050	08/01/2017	ND	1.95	97.7	2.00	1.12	
Total Xylenes*	<0.150	0.150	08/01/2017	ND	5.81	96.8	6.00	0.104	
Total BTX	<0.300	0.300	08/01/2017	ND					

Surrogate: 4-Bromofluorobenzene (PID) 101 % 72-148

Chloride, SM4500Cl-B		mg/kg		Analyzed By: AC					
Analyte	Result	Reporting Limit	Analyzed	Method Blank	BS	% Recovery	True Value QC	RPD	Qualifier
Chloride	16.0	16.0	07/31/2017	ND	432	108	400	0.00	

TPH 8015M		mg/kg		Analyzed By: MS					
Analyte	Result	Reporting Limit	Analyzed	Method Blank	BS	% Recovery	True Value QC	RPD	Qualifier
GRO C6-C10	<10.0	10.0	07/31/2017	ND	200	99.8	200	2.36	
DRO >C10-C28	<10.0	10.0	07/31/2017	ND	207	103	200	2.64	
EXT DRO >C28-C36	<10.0	10.0	07/31/2017	ND					

Surrogate: 1-Chlorooctane 90.7 % 28.3-164

Surrogate: 1-Chlorooctadecane 90.9 % 34.7-157

Cardinal Laboratories

*=Accredited Analyte

PLEASE NOTE: Liability and Damages. Cardinal's liability and client's exclusive remedy for any claim arising, whether based in contract or tort, shall be limited to the amount paid by client for analyses. All claims, including those for negligence and any other cause whatsoever shall be deemed waived unless made in writing and received by Cardinal within thirty (30) days after completion of the applicable service. In no event shall Cardinal be liable for incidental or consequential damages, including, without limitation, business interruptions, loss of use, or loss of profits incurred by client, its subsidiaries, affiliates or successors arising out of or related to the performance of the services hereunder by Cardinal, regardless of whether such claim is based upon any of the above stated reasons or otherwise. Results relate only to the samples identified above. This report shall not be reproduced except in full with written approval of Cardinal Laboratories.



Celey D. Keene, Lab Director/Quality Manager

Analytical Results For:

Environmental Plus, Inc.
Daniel Dominguez
P.O. Box 1558
Eunice NM, 88231
Fax To: (505) 394-2601

Received: 07/28/2017
Reported: 08/03/2017
Project Name: ASPEN 32 STATE #1 TRANSFER LINE
Project Number: NONE GIVEN
Project Location: UL-I SEC. 6, T18S, R28E

Sampling Date: 07/26/2017
Sampling Type: Soil
Sampling Condition: Cool & Intact
Sample Received By: Jodi Henson

Sample ID: SP 8 (1') (H701983-16)

BTEx 8021B		mg/kg		Analyzed By: MS					
Analyte	Result	Reporting Limit	Analyzed	Method Blank	BS	% Recovery	True Value QC	RPD	Qualifier
Benzene*	<0.050	0.050	08/01/2017	ND	2.03	102	2.00	1.98	
Toluene*	<0.050	0.050	08/01/2017	ND	1.89	94.5	2.00	2.60	
Ethylbenzene*	<0.050	0.050	08/01/2017	ND	1.95	97.7	2.00	1.12	
Total Xylenes*	<0.150	0.150	08/01/2017	ND	5.81	96.8	6.00	0.104	
Total BTEX	<0.300	0.300	08/01/2017	ND					

Surrogate: 4-Bromofluorobenzene (PID) 101 % 72-148

Chloride, SM4500Cl-B		mg/kg		Analyzed By: AC					
Analyte	Result	Reporting Limit	Analyzed	Method Blank	BS	% Recovery	True Value QC	RPD	Qualifier
Chloride	32.0	16.0	07/31/2017	ND	432	108	400	0.00	

TPH 8015M		mg/kg		Analyzed By: MS					
Analyte	Result	Reporting Limit	Analyzed	Method Blank	BS	% Recovery	True Value QC	RPD	Qualifier
GRO C6-C10	<10.0	10.0	07/31/2017	ND	200	99.8	200	2.36	
DRO >C10-C28	<10.0	10.0	07/31/2017	ND	207	103	200	2.64	
EXT DRO >C28-C36	<10.0	10.0	07/31/2017	ND					

Surrogate: 1-Chlorooctane 104 % 28.3-164

Surrogate: 1-Chlorooctadecane 106 % 34.7-157

Cardinal Laboratories

*=Accredited Analyte

PLEASE NOTE: Liability and Damages. Cardinal's liability and client's exclusive remedy for any claim arising, whether based in contract or tort, shall be limited to the amount paid by client for analyses. All claims, including those for negligence and any other cause whatsoever shall be deemed waived unless made in writing and received by Cardinal within thirty (30) days after completion of the applicable service. In no event shall Cardinal be liable for incidental or consequential damages, including, without limitation, business interruptions, loss of use, or loss of profits incurred by client, its subsidiaries, affiliates or successors arising out of or related to the performance of the services hereunder by Cardinal, regardless of whether such claim is based upon any of the above stated reasons or otherwise. Results relate only to the samples identified above. This report shall not be reproduced except in full with written approval of Cardinal Laboratories.



Celey D. Keene, Lab Director/Quality Manager

Analytical Results For:

Environmental Plus, Inc.
Daniel Dominguez
P.O. Box 1558
Eunice NM, 88231
Fax To: (505) 394-2601

Received:	07/28/2017	Sampling Date:	07/26/2017
Reported:	08/03/2017	Sampling Type:	Soil
Project Name:	ASPEN 32 STATE #1 TRANSFER LINE	Sampling Condition:	Cool & Intact
Project Number:	NONE GIVEN	Sample Received By:	Jodi Henson
Project Location:	UL-I SEC. 6, T18S, R28E		

Sample ID: SP 9 (SURFACE) (H701983-17)

BTX 8021B		mg/kg		Analyzed By: MS					
Analyte	Result	Reporting Limit	Analyzed	Method Blank	BS	% Recovery	True Value QC	RPD	Qualifier
Benzene*	<0.050	0.050	08/01/2017	ND	2.03	102	2.00	1.98	
Toluene*	<0.050	0.050	08/01/2017	ND	1.89	94.5	2.00	2.60	
Ethylbenzene*	<0.050	0.050	08/01/2017	ND	1.95	97.7	2.00	1.12	
Total Xylenes*	<0.150	0.150	08/01/2017	ND	5.81	96.8	6.00	0.104	
Total BTX	<0.300	0.300	08/01/2017	ND					

Surrogate: 4-Bromofluorobenzene (PID) 102 % 72-148

Chloride, SM4500CI-B		mg/kg		Analyzed By: AC					
Analyte	Result	Reporting Limit	Analyzed	Method Blank	BS	% Recovery	True Value QC	RPD	Qualifier
Chloride	16.0	16.0	08/01/2017	ND	416	104	400	3.77	

TPH 8015M		mg/kg		Analyzed By: MS					
Analyte	Result	Reporting Limit	Analyzed	Method Blank	BS	% Recovery	True Value QC	RPD	Qualifier
GRO C6-C10	<10.0	10.0	07/31/2017	ND	200	99.8	200	2.36	
DRO >C10-C28	<10.0	10.0	07/31/2017	ND	207	103	200	2.64	
EXT DRO >C28-C36	<10.0	10.0	07/31/2017	ND					

Surrogate: 1-Chlorooctane 103 % 28.3-164

Surrogate: 1-Chlorooctadecane 106 % 34.7-157

Cardinal Laboratories

*=Accredited Analyte

PLEASE NOTE: Liability and Damages. Cardinal's liability and client's exclusive remedy for any claim arising, whether based in contract or tort, shall be limited to the amount paid by client for analyses. All claims, including those for negligence and any other cause whatsoever shall be deemed waived unless made in writing and received by Cardinal within thirty (30) days after completion of the applicable service. In no event shall Cardinal be liable for incidental or consequential damages, including, without limitation, business interruptions, loss of use, or loss of profits incurred by client, its subsidiaries, affiliates or successors arising out of or related to the performance of the services hereunder by Cardinal, regardless of whether such claim is based upon any of the above stated reasons or otherwise. Results relate only to the samples identified above. This report shall not be reproduced except in full with written approval of Cardinal Laboratories.



Celey D. Keene, Lab Director/Quality Manager

Analytical Results For:

Environmental Plus, Inc.
Daniel Dominguez
P.O. Box 1558
Eunice NM, 88231
Fax To: (505) 394-2601

Received: 07/28/2017
Reported: 08/03/2017
Project Name: ASPEN 32 STATE #1 TRANSFER LINE
Project Number: NONE GIVEN
Project Location: UL-I SEC. 6, T18S, R28E

Sampling Date: 07/26/2017
Sampling Type: Soil
Sampling Condition: Cool & Intact
Sample Received By: Jodi Henson

Sample ID: SP 9 (1') (H701983-18)

BTEx 8021B		mg/kg		Analyzed By: MS					
Analyte	Result	Reporting Limit	Analyzed	Method Blank	BS	% Recovery	True Value QC	RPD	Qualifier
Benzene*	<0.050	0.050	08/01/2017	ND	2.03	102	2.00	1.98	
Toluene*	<0.050	0.050	08/01/2017	ND	1.89	94.5	2.00	2.60	
Ethylbenzene*	<0.050	0.050	08/01/2017	ND	1.95	97.7	2.00	1.12	
Total Xylenes*	<0.150	0.150	08/01/2017	ND	5.81	96.8	6.00	0.104	
Total BTEX	<0.300	0.300	08/01/2017	ND					

Surrogate: 4-Bromofluorobenzene (PID) 101 % 72-148

Chloride, SM4500Cl-B		mg/kg		Analyzed By: AC					
Analyte	Result	Reporting Limit	Analyzed	Method Blank	BS	% Recovery	True Value QC	RPD	Qualifier
Chloride	32.0	16.0	08/01/2017	ND	416	104	400	3.77	

TPH 8015M		mg/kg		Analyzed By: MS					
Analyte	Result	Reporting Limit	Analyzed	Method Blank	BS	% Recovery	True Value QC	RPD	Qualifier
GRO C6-C10	<10.0	10.0	07/31/2017	ND	184	91.8	200	0.132	
DRO >C10-C28	<10.0	10.0	07/31/2017	ND	187	93.7	200	1.30	
EXT DRO >C28-C36	<10.0	10.0	07/31/2017	ND					

Surrogate: 1-Chlorooctane 83.0 % 28.3-164

Surrogate: 1-Chlorooctadecane 80.1 % 34.7-157

Cardinal Laboratories

*=Accredited Analyte

PLEASE NOTE: Liability and Damages. Cardinal's liability and client's exclusive remedy for any claim arising, whether based in contract or tort, shall be limited to the amount paid by client for analyses. All claims, including those for negligence and any other cause whatsoever shall be deemed waived unless made in writing and received by Cardinal within thirty (30) days after completion of the applicable service. In no event shall Cardinal be liable for incidental or consequential damages, including, without limitation, business interruptions, loss of use, or loss of profits incurred by client, its subsidiaries, affiliates or successors arising out of or related to the performance of the services hereunder by Cardinal, regardless of whether such claim is based upon any of the above stated reasons or otherwise. Results relate only to the samples identified above. This report shall not be reproduced except in full with written approval of Cardinal Laboratories.



Celey D. Keene, Lab Director/Quality Manager

Analytical Results For:

Environmental Plus, Inc.
Daniel Dominguez
P.O. Box 1558
Eunice NM, 88231
Fax To: (505) 394-2601

Received:	07/28/2017	Sampling Date:	07/26/2017
Reported:	08/03/2017	Sampling Type:	Soil
Project Name:	ASPEN 32 STATE #1 TRANSFER LINE	Sampling Condition:	Cool & Intact
Project Number:	NONE GIVEN	Sample Received By:	Jodi Henson
Project Location:	UL-I SEC. 6, T18S, R28E		

Sample ID: SP 10 (SURFACE) (H701983-19)

BTEx 8021B		mg/kg		Analyzed By: MS					
Analyte	Result	Reporting Limit	Analyzed	Method Blank	BS	% Recovery	True Value QC	RPD	Qualifier
Benzene*	<0.050	0.050	08/01/2017	ND	2.03	102	2.00	1.98	
Toluene*	<0.050	0.050	08/01/2017	ND	1.89	94.5	2.00	2.60	
Ethylbenzene*	<0.050	0.050	08/01/2017	ND	1.95	97.7	2.00	1.12	
Total Xylenes*	<0.150	0.150	08/01/2017	ND	5.81	96.8	6.00	0.104	
Total BTEX	<0.300	0.300	08/01/2017	ND					

Surrogate: 4-Bromofluorobenzene (PID) 101 % 72-148

Chloride, SM4500Cl-B		mg/kg		Analyzed By: AC					
Analyte	Result	Reporting Limit	Analyzed	Method Blank	BS	% Recovery	True Value QC	RPD	Qualifier
Chloride	96.0	16.0	08/01/2017	ND	416	104	400	3.77	

TPH 8015M		mg/kg		Analyzed By: MS					
Analyte	Result	Reporting Limit	Analyzed	Method Blank	BS	% Recovery	True Value QC	RPD	Qualifier
GRO C6-C10	<10.0	10.0	07/31/2017	ND	184	91.8	200	0.132	
DRO >C10-C28	<10.0	10.0	07/31/2017	ND	187	93.7	200	1.30	
EXT DRO >C28-C36	<10.0	10.0	07/31/2017	ND					

Surrogate: 1-Chlorooctane 86.6 % 28.3-164

Surrogate: 1-Chlorooctadecane 83.9 % 34.7-157

Cardinal Laboratories

*=Accredited Analyte

PLEASE NOTE: Liability and Damages. Cardinal's liability and client's exclusive remedy for any claim arising, whether based in contract or tort, shall be limited to the amount paid by client for analyses. All claims, including those for negligence and any other cause whatsoever shall be deemed waived unless made in writing and received by Cardinal within thirty (30) days after completion of the applicable service. In no event shall Cardinal be liable for incidental or consequential damages, including, without limitation, business interruptions, loss of use, or loss of profits incurred by client, its subsidiaries, affiliates or successors arising out of or related to the performance of the services hereunder by Cardinal, regardless of whether such claim is based upon any of the above stated reasons or otherwise. Results relate only to the samples identified above. This report shall not be reproduced except in full with written approval of Cardinal Laboratories.



Celey D. Keene, Lab Director/Quality Manager

Analytical Results For:

 Environmental Plus, Inc.
 Daniel Dominguez
 P.O. Box 1558
 Eunice NM, 88231
 Fax To: (505) 394-2601

Received:	07/28/2017	Sampling Date:	07/26/2017
Reported:	08/03/2017	Sampling Type:	Soil
Project Name:	ASPEN 32 STATE #1 TRANSFER LINE	Sampling Condition:	Cool & Intact
Project Number:	NONE GIVEN	Sample Received By:	Jodi Henson
Project Location:	UL-I SEC. 6, T18S, R28E		

Sample ID: SP 10 (1') (H701983-20)

BTEx 8021B		mg/kg		Analyzed By: MS					
Analyte	Result	Reporting Limit	Analyzed	Method Blank	BS	% Recovery	True Value QC	RPD	Qualifier
Benzene*	<0.050	0.050	08/01/2017	ND	2.03	102	2.00	1.98	
Toluene*	<0.050	0.050	08/01/2017	ND	1.89	94.5	2.00	2.60	
Ethylbenzene*	<0.050	0.050	08/01/2017	ND	1.95	97.7	2.00	1.12	
Total Xylenes*	<0.150	0.150	08/01/2017	ND	5.81	96.8	6.00	0.104	
Total BTEx	<0.300	0.300	08/01/2017	ND					

Surrogate: 4-Bromofluorobenzene (PID) 101 % 72-148

Chloride, SM4500Cl-B		mg/kg		Analyzed By: AC					
Analyte	Result	Reporting Limit	Analyzed	Method Blank	BS	% Recovery	True Value QC	RPD	Qualifier
Chloride	16.0	16.0	08/01/2017	ND	416	104	400	3.77	

TPH 8015M		mg/kg		Analyzed By: MS					
Analyte	Result	Reporting Limit	Analyzed	Method Blank	BS	% Recovery	True Value QC	RPD	Qualifier
GRO C6-C10	<10.0	10.0	07/31/2017	ND	184	91.8	200	0.132	
DRO >C10-C28	<10.0	10.0	07/31/2017	ND	187	93.7	200	1.30	
EXT DRO >C28-C36	<10.0	10.0	07/31/2017	ND					

Surrogate: 1-Chlorooctane 75.0 % 28.3-164

Surrogate: 1-Chlorooctadecane 73.6 % 34.7-157

Cardinal Laboratories

*=Accredited Analyte

PLEASE NOTE: Liability and Damages. Cardinal's liability and client's exclusive remedy for any claim arising, whether based in contract or tort, shall be limited to the amount paid by client for analyses. All claims, including those for negligence and any other cause whatsoever shall be deemed waived unless made in writing and received by Cardinal within thirty (30) days after completion of the applicable service. In no event shall Cardinal be liable for incidental or consequential damages, including, without limitation, business interruptions, loss of use, or loss of profits incurred by client, its subsidiaries, affiliates or successors arising out of or related to the performance of the services hereunder by Cardinal, regardless of whether such claim is based upon any of the above stated reasons or otherwise. Results relate only to the samples identified above. This report shall not be reproduced except in full with written approval of Cardinal Laboratories.



Celey D. Keene, Lab Director/Quality Manager

Notes and Definitions

S-06	The recovery of this surrogate is outside control limits due to sample dilution required from high analyte concentration and/or matrix interference's.
QR-03	The RPD value for the sample duplicate or MS/MSD was outside of QC acceptance limits due to matrix interference. QC batch accepted based on LCS and/or LCSD recovery and/or RPD values.
ND	Analyte NOT DETECTED at or above the reporting limit
RPD	Relative Percent Difference
**	Samples not received at proper temperature of 6°C or below.
***	Insufficient time to reach temperature.
-	Chloride by SM4500Cl-B does not require samples be received at or below 6°C Samples reported on an as received basis (wet) unless otherwise noted on report



Celey D. Keene, Lab Director/Quality Manager

Environmental Plus, Inc.

2100 Avenue O, Eunice, NM 88231
(575) 394-3481 FAX: (575) 394-2601

P.O. Box 1558, Eunice, NM 88231

Chain of Custody Form

LAB Cardinal

Bill To										ANALYSIS REQUEST																			
Company Name Environmental Plus, Inc.										EPI Project Manager Daniel Dominguez																			
Mailing Address P.O. BOX 1558										City, State, Zip Eunice New Mexico 88231																			
EPI Phone/Fax# 575-394-3481 / 575-394-2601										Client Company Vanguard																			
Facility Name Aspen 32 State #1 Transfer Line										Location UL-1 Sec. 6, T18S, R28E																			
Project Reference										EPI Sampler Name Dustin Crockett																			
LAB I.D. H7D1983										SAMPLE I.D.										Attn: Daniel Dominguez P.O. Box 1558 Eunice, NM 88231									
1 SP1 (Surface)										(G)RAB OR (C)OMP.										# CONTAINERS									
2 SP1 (18')										GROUND WATER										WASTEWATER									
3 SP2 (Surface)										SOIL										CRUDE OIL									
4 SP2 (23')										SLUDGE										OTHER:									
5 SP3 (Surface)										ACID/BASE										ICE/COOL									
6 SP3 (22')										OTHER										DATE									
7 SP4 (Surface)										DATE										TIME									
8 SP4 (20')										BTEX 8021B										TPH 8015M Ext.									
9 SP5 (Surface)										CHLORIDES (Cl ⁻)										SULFATES (SO ₄ ²⁻)									
10 SP5 (1')										pH										TCLP									
										OTHER >>>										PAH									

Sampler Relinquished:		Received By:	
Date	Time	Date	Time
7-28-17	1:00 pm	7-28-17	3:43 pm
Relinquished by: <i>[Signature]</i>		Received By: <i>[Signature]</i>	
Delivered by: <i>[Signature]</i>		Sample Cool & Intact Yes	

NOTES: E-mail results to: ddominguezepi@gmail.com & cjohnston@vnrllc.com & bbooneepi@gmail.com

Corrected +.25

ATTACHMENT IV
Copy of Initial NMOCD Form C-141

District I
1625 N. French Dr., Hobbs, NM 88240
District II
811 S. First St., Artesia, NM 88210
District III
1000 Rio Brazos Road, Aztec, NM 87410
District IV
1220 S. St. Francis Dr., Santa Fe, NM 87505

State of New Mexico
Energy Minerals and Natural Resources

Oil Conservation Division
1220 South St. Francis Dr.
Santa Fe, NM 87505

NM OIL CONSERVATION

ARTESIA DISTRICT

Form C-141
Revised August 8, 2011

DEC 21 2015

Submit Copy to appropriate District Office in accordance with 19.15.29 NMAC.

RECEIVED

Release Notification and Corrective Action

NAB1535756628 (Roca Prod.) 258350

OPERATOR

X Initial Report Final Report

Name of Company	VanGuard National Resources, LLC	Contact	Dennis Howard
Address	5847 San Felipe St. Ste.3000, Houston, TX 77057	Telephone No.	505-918-0293
Facility Name	Aspen 32 State Com. No.1 transfer line release		

Surface Owner State	Mineral Owner State	API No.	30-015-34148
---------------------	---------------------	---------	--------------

LOCATION OF RELEASE

Unit Letter	Section	Township	Range	Feet from the	North/South Line	Feet from the	East/West Line	County
J	32	17S	28E	1370'	FSL	1609'	FEL	EDDY

Latitude 32.775554 Longitude 104.20605

NATURE OF RELEASE

Type of Release	produced waters	Volume of Release	50 bbls	Volume Recovered	12 bbls
Source of Release	3" transfer line	Date and Hour of Occurrence	unknown	Date and Hour of Discovery	12/11/2015 2:30pm
Was Immediate Notice Given?	X Yes <input type="checkbox"/> No <input type="checkbox"/> Not Required				
	If YES, To Whom? Mike Bratcher/NMOCD Artesia Office/voice mail box				
By Whom?	Mike Stubblefield				
	Date and Hour 12/11/2015 2:59pm				
Was a Watercourse Reached?	<input type="checkbox"/> Yes X No				
	If YES, Volume Impacting the Watercourse.				

If a Watercourse was Impacted, Describe Fully.*

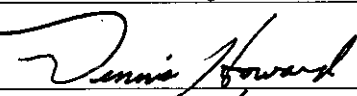
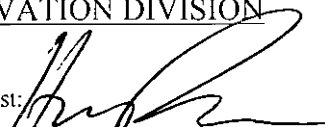
Describe Cause of Problem and Remedial Action Taken.*

The source of release was a pinhole in a valve transition on the 3" line bringing produced water from the Aspen 32 State Com. No.1 to the Walter Solt State No.1 an SWD, resulting in a release of 50 bbls of Produced water. The valve transition was replace, the 3" line was placed back into service. A vacuum truck was immediately brought to the release site. standing fluids were recovered.

Describe Area Affected and Cleanup Action Taken.*

The affected area is located in Ut. E sec.5-T18S-R28E, this area being near the Walter Solti State No.1 SWD, 200yds west of county Rd. 206. The impacted area was measured to be 240' L x 138' W. R.T Hicks Consultants has been contracted to construct a Remediation plan for the correction on the release.

I hereby certify that the information given above is true and complete to the best of my knowledge and understand that pursuant to NMOCD rules and regulations all operators are required to report and/or file certain release notifications and perform corrective actions for releases which may endanger public health or the environment. The acceptance of a C-141 report by the NMOCD marked as "Final Report" does not relieve the operator of liability should their operations have failed to adequately investigate and remediate contamination that pose a threat to ground water, surface water, human health or the environment. In addition, NMOCD acceptance of a C-141 report does not relieve the operator of responsibility for compliance with any other federal, state, or local laws and/or regulations.

AMENDED	OIL CONSERVATION DIVISION	
Signature: 	Approved by Environmental Specialist: 	
Printed Name: Dennis Howard	Approval Date: 12/23/15	Expiration Date: N/A
Title: Production Supervisor	Conditions of Approval:	
E-mail Address: Dennis Howard <dhoward@vnrllc.com>	Attached <input type="checkbox"/>	
Date: 12/21/2015	Phone: 505-918-0293	

* Attach Additional Sheets If Necessary

Remediation per O.C.D. Rules & Guidelines
SUBMIT REMEDIATION PROPOSAL NO
LATER THAN: 1/21/16

2RP-3465