

PROPRIETARY AND CONFIDENTIAL
THE INFORMATION CONTAINED IN THIS DRAWING IS THE SOLE PROPERTY OF
AZTEC ENGINEERING INC. ANY REPRODUCTION IN PART OR AS A WHOLE WITHOUT
THE WRITTEN PERMISSION OF AZTEC ENGINEERING INC. IS PROHIBITED.

8	AS-BUILT UPDATES	2018.07.24
7	MATERIAL SUBSTITUTIONS	2018.04.16
6	SWITCH TO UPN100 CHANNEL	2018.04.06
5	SHORTER PLATE FOR WELD SPACE	2018.03.29
4	SWITCH TO C CHANNEL RIB	2018.03.27
3	BOTTOM MEMBER CONTINUOUS	2018.02.14
2	ADD SHIPPING DETAIL AND STAND	2017.08.01
1	ADD VERTICAL WELD DETAIL	2017.07.27
REV	DESCRIPTION	DATE

UNLESS OTHERWISE SPECIFIED:
DIMENSIONS ARE IN INCHES
TOLERANCES:
FRACTIONAL ±: 1/8"
ANGULAR: MACH ±: - BEND ±: -
TWO PLACE DECIMAL ±: 0.01
THREE PLACE DECIMAL ±: 0.002
MATERIAL: -
FINISH: -
ENG PERMIT TO PRACTICE #P08147 ASSOCIATION OF PROFESSIONAL ENGINEERS, GEOLOGISTS & GEOPHYSICISTS OF ALBERTA

DRAWN	NAME	DATE
CHECKED	ST	17.03.30
ENG APPR.	WD	17.05.18
MFG APPR.	WD	17.05.18
PREPARED:		

CLIENT:		
PROJECT: DOUBLE PANEL P18 TANK		
PART: GENERAL ARRANGEMENT		
DWG. NO.: E17-142-4000NA	REV 8	
SCALE: DNS	WEIGHT: 120110LBS.	SHEET: 1 OF 10

BILL OF MATERIALS				
ITEM NO.	PART NUMBER	QTY.	DESCRIPTION	WEIGHT (lb. ea.)
1	142-4100	18	1.75m PANEL ASSEMBLY	3866
2	142-4200	18	2.0m PANEL ASSEMBLY	3320
3	142-4300	162	PL1x9	36

GENERAL NOTES:

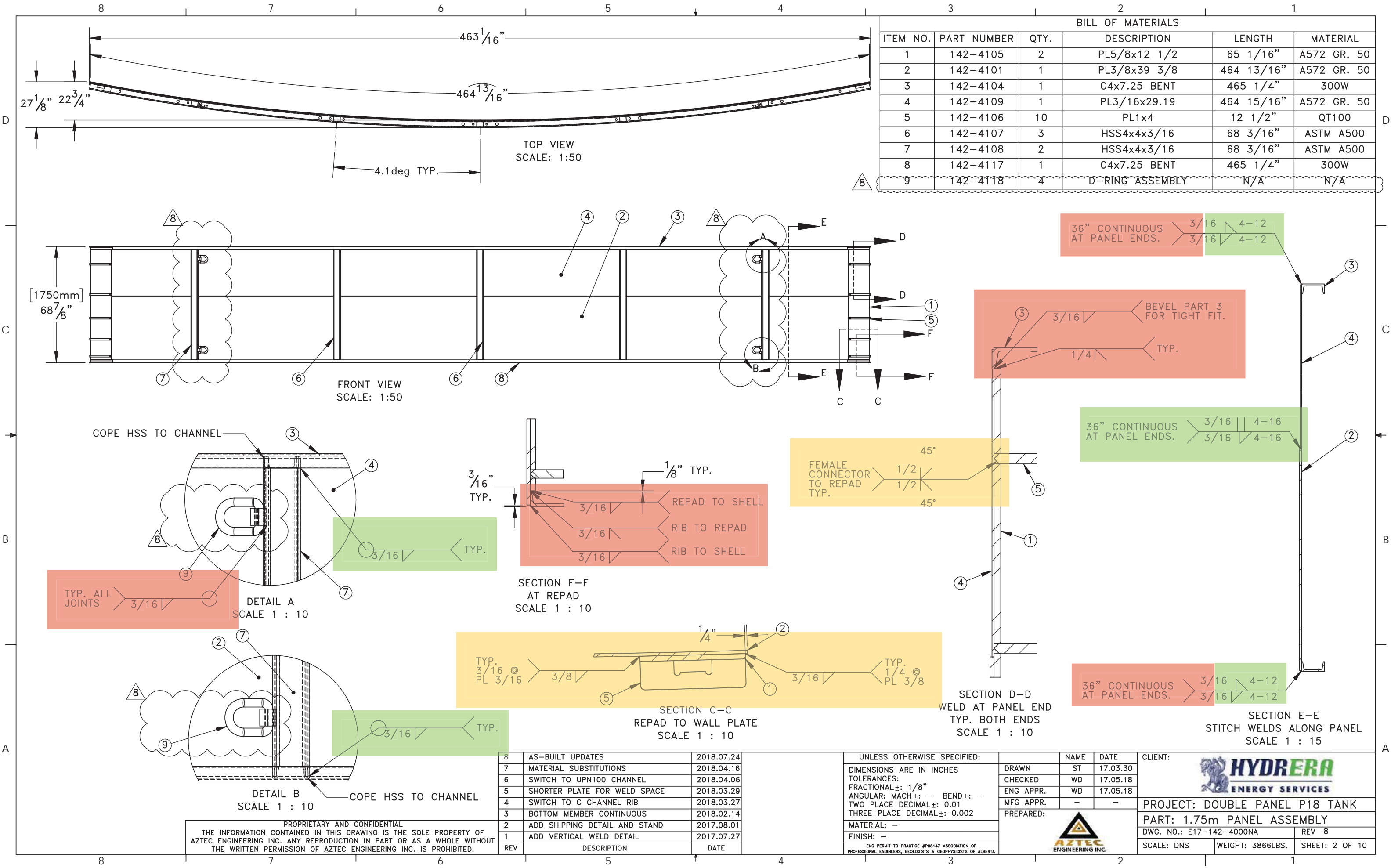
- THE ABOVE GROUND STORAGE TANK HAS BEEN DESIGNED IN ACCORDANCE WITH THE ALBERTA BUILDING CODE.
- ALL STRUCTURAL STEEL MEMBERS HAVE BEEN DESIGNED IN ACCORDANCE WITH CAN/CSA-S16-09-"LIMIT STATES DESIGN OF STEEL STRUCTURE".
- UNLESS OTHERWISE STATED ALL STRUCTURAL STEEL SHALL CONFORM TO CSA STANDARD G40.21-M92. ACCEPTED SUBSTITUTES IN BRACKETS.
 - HSS ASTM A500 (SUBSTITUTES BY APPROVAL)
 - PLATE ASTM A-572 Gr.50 (MIN. Fy=45ksi, Fu=60ksi)
 - BAR QT100 (ASTM A-514 Gr.B W/MIN. Fy=100ksi)
- FABRICATION SHALL CONFORM TO CAN/CSA S16-09.
- ALL WELDING SHALL BE DONE BY QUALIFIED WELDERS IN COMPLIANCE WITH CSA STANDARD W47.1-2009 AND IN ACCORDANCE WITH CSA STANDARD W59-13.
- UNLESS OTHERWISE STATED ALL CONNECTONS ARE TO BE 3/16" ALL-AROUND FILLET WELDS.
- 8 D-RING TO HAVE A MINIMUM OF 4000 lb. WLL.

ASSEMBLY NOTES:

- ASSEMBLE WITH ADDITIONAL BRACING AND STABILITY AS REQUIRED.
- TANK IS TO BE SUPPORTED BY SOUND, LEVEL FOOTING.
- PANELS ARE TO BE HOISTED WITH THE DESIGNATED LIFTING BARS.
- TANK IS TO BE USED IN COMPLIANCE WITH DIRECTIVE 55 ADDENDUM OR IN ACCORDANCE WITH LOCAL JURISDICTION.
- 2 BOLTS BETWEEN PANELS ARE TO BE 1" DIAMETER, GRADE A325 OR EQUIVALENT.
- BOLTS ARE TO BE SNUG-TIGHTENED; TIGHTEN BOLTS SUFFICIENTLY TO BRING THE CONNECTED ELEMENTS INTO FIRM CONTACT.
- DOUBLE NUT BOLTS BETWEEN PANELS IF PANELS ARE STACKED FOR TRANSPORT.

SPECIFICATIONS:

- VARIABLE DIAMETER ABOVE GROUND STORAGE TANK IS RATED FOR 13 TO 18 PANELS ASSEMBLIES FOR FLUIDS UP TO 1.05 SPECIFIC GRAVITY.
- 6,500 M³ TO 13,000 M³ NOMINAL CAPACITY.



BILL OF MATERIALS					
ITEM NO.	PART NUMBER	QTY.	DESCRIPTION	LENGTH	MATERIAL
1	142-4105	2	PL5/8x12 1/2	65 1/16"	A572 GR. 50
2	142-4101	1	PL3/8x39 3/8	464 13/16"	A572 GR. 50
3	142-4104	1	C4x7.25 BENT	465 1/4"	300W
4	142-4109	1	PL3/16x29.19	464 15/16"	A572 GR. 50
5	142-4106	10	PL1x4	12 1/2"	QT100
6	142-4107	3	HSS4x4x3/16	68 3/16"	ASTM A500
7	142-4108	2	HSS4x4x3/16	68 3/16"	ASTM A500
8	142-4117	1	C4x7.25 BENT	465 1/4"	300W
9	142-4118	4	D-RING ASSEMBLY	N/A	N/A

PROPRIETARY AND CONFIDENTIAL
THE INFORMATION CONTAINED IN THIS DRAWING IS THE SOLE PROPERTY OF
AZTEC ENGINEERING INC. ANY REPRODUCTION IN PART OR AS A WHOLE WITHOUT
THE WRITTEN PERMISSION OF AZTEC ENGINEERING INC. IS PROHIBITED.

8	AS-BUILT UPDATES	2018.07.24
7	MATERIAL SUBSTITUTIONS	2018.04.16
6	SWITCH TO UPN100 CHANNEL	2018.04.06
5	SHORTER PLATE FOR WELD SPACE	2018.03.29
4	SWITCH TO C CHANNEL RIB	2018.03.27
3	BOTTOM MEMBER CONTINUOUS	2018.02.14
2	ADD SHIPPING DETAIL AND STAND	2017.08.01
1	ADD VERTICAL WELD DETAIL	2017.07.27
REV	DESCRIPTION	DATE

UNLESS OTHERWISE SPECIFIED:	
DIMENSIONS ARE IN INCHES	
TOLERANCES:	
FRACTIONAL ±: 1/8"	
ANGULAR: MACH ±: - BEND ±: -	
TWO PLACE DECIMAL ±: 0.01	
THREE PLACE DECIMAL ±: 0.002	
MATERIAL: -	
FINISH: -	
ENG PERMIT TO PRACTICE #P08147 ASSOCIATION OF PROFESSIONAL ENGINEERS, GEOLOGISTS & GEOPHYSICISTS OF ALBERTA	

DRAWN	NAME	DATE
CHECKED	ST	17.03.30
ENG APPR.	WD	17.05.18
MFG APPR.	WD	17.05.18
PREPARED:		
AZTEC ENGINEERING INC.		

CLIENT:		PROJECT: DOUBLE PANEL P18 TANK	
PART: 1.75m PANEL ASSEMBLY		DWG. NO.: E17-142-4000NA	
SCALE: DNS		WEIGHT: 3866LBS.	
SHEET: 2 OF 10		REV 8	

