

Submit 3 Copies To Appropriate District Office
District I
1625 N. French Dr., Hobbs, NM 88240
District II
1301 W. Grand Ave., Artesia, NM 88210
District III
1000 Rio Brazos Rd., Aztec, NM 87410
District IV
1220 S. St. Francis Dr., Santa Fe, NM 87505

State of New Mexico
Energy, Minerals and Natural Resources

Form C-103
Revised June 10, 2003

OIL CONSERVATION DIVISION
1220 South St. Francis Dr.
Santa Fe, NM 87505

WELL API NO. 30-015-20358
5. Indicate Type of Lease STATE <input type="checkbox"/> FEE <input checked="" type="checkbox"/>
6. State Oil & Gas Lease No.

SUNDRY NOTICES AND REPORTS ON WELLS
(DO NOT USE THIS FORM FOR PROPOSALS TO DRILL OR TO DEEPEN OR PLUG BACK TO A DIFFERENT RESERVOIR. USE "APPLICATION FOR PERMIT" (FORM C-101) FOR SUCH PROPOSALS.)

1. Type of Well:
Oil Well ☒ Gas Well ☐ Other

2. Name of Operator
Yates Petroleum Corporation

3. Address of Operator
105 S. 4th Street, Artesia, NM 88210

4. Well Location

Unit Letter I : 1,650' feet from the South line and 990' feet from the East line
Section 24 Township 18S Range 25E NMPM Eddy County

11. Elevation (Show whether DR, RKB, RT, GR, etc.)

12. Check Appropriate Box to Indicate Nature of Notice, Report or Other Data
NOTICE OF INTENTION TO:

PERFORM REMEDIAL WORK ☐ PLUG AND ABANDON ☒

TEMPORARILY ABANDON ☐ CHANGE PLANS ☐

PULL OR ALTER CASING ☐ MULTIPLE COMPLETION ☐

OTHER: ☐

SUBSEQUENT REPORT OF:

REMEDIAL WORK ☐ ALTERING CASING ☐

COMMENCE DRILLING OPNS. ☐ PLUG AND ABANDONMENT ☐

CASING TEST AND CEMENT JOB ☐

OTHER: ☐

13. Describe proposed or completed operations. (Clearly state all pertinent details, and give pertinent dates, including estimated date of starting any proposed work). SEE RULE 1103. For Multiple Completions: Attach wellbore diagram of proposed completion or recompletion.

Yates Petroleum Corporation proposes to P&A this well as follows:

1. Notify the NMOCD at least 24 hrs before starting the plugging work. MIRU a WSU. Rig up safety trailer as necessary and ND wellhead. NU BOP. TOH w/ tubing and rods.
2. RU a wireline company. RIH w/ CBL find top of cement and report.
3. TIH w/ CIBP on WL & set @1,417'. Dump 35' of cement on top.
4. If CBL shows cement is not above shoe of intermediate casing, at 1,226', shoot squeeze holes at 1,276'.
5. RIH w/ tubing and pkr. Pump 100' cement plug out side of casing from 1,276'-1,176' and also leaving 100' plug in side casing from 1,276'-1,176'. (Tag plug). 100' CMT Plg. 478'-578' - TAG.
6. Perforate at 60' & circulate to surface, leaving cement at ground level. Go to step 9. - Surface 24 Hrs. TAC
7. IF CBL shows cement is at least 50' above intermediate shoe set 100' plug in side casing from 1,276'-1,176'. (Tag plug)
8. IF CBL shows CMT is not to surface perforate at 60' and circulate to surface. If CBL shows cement was circulated to surface set 60' plug inside casing, leaving cement at ground level.
9. Cut off wellhead and install dry hole marker as per regulations. Clean up as required.

I hereby certify that the information above is true and complete to the best of my knowledge and belief.

SIGNATURE: Su'Ann Rogers TITLE: Regulatory Compliance Tech. DATE: 5/10/04

Type or print name Su'Ann Rogers

Telephone No. 505-748-1471

(This space for State use)

APPROVED BY: [Signature] TITLE: Field Inspector DATE: 5/12/04

Conditions of approval, if any:

YATES PETROLEUM CORPORATION

Well: Brown-Yates #1

Field: Penasco Draw San Andres-Yeso

Elevation: 3451' gl TD: 9000' PBTD:2901' Spud: 12/17/70

David Faskin original oper. Yates oper from 11/1/80

Before

Location: 24I,18S, 25E

Eddy Co, NM

Casing And Cementing:J

13 3/8" 48# J-55 @ 528'. Cmted with 520 sxs. Ciec cmt.

8 5/8" 24# J-55 @ 1226". Cmted with 750 sxs.TOC @ 580'. Pmped 200 sxs dn annulus.

4 1/2" 11.6 & 10.5# @8999'.Cmted with 500 sxs. TOC @ 6376'. Pulled from 5020' 10/23/80.

5 1/2" 14# J-55 @ 2492'450 sxs. 11/10/80.

Formations:

T/Queen @ 30'

T/Grayburg @ 355'

T/San Andres @ 812'

T/Glorietta @ 2155'

T/Blinberry @ 2255'

T/Abo @ 4345'

T/Wolfcamp @ 5680'

T/Barnett(Miss) @ 8872'

Original Completion

2/3/71-Perf 8823-8872. P&A

12/8/80-Perf 2241'-2375'.Frac with 60000 gal water & 90000# sand.

Potential:

12/14/80-P/16 BOPD, 27 MCFGPD & 5 BWPD

Recompletions:

2/19/88-Set CIBP @ 2135'. Perf 1467-1685'. Frac with 60000 gal gelledwater & 40000# sand.

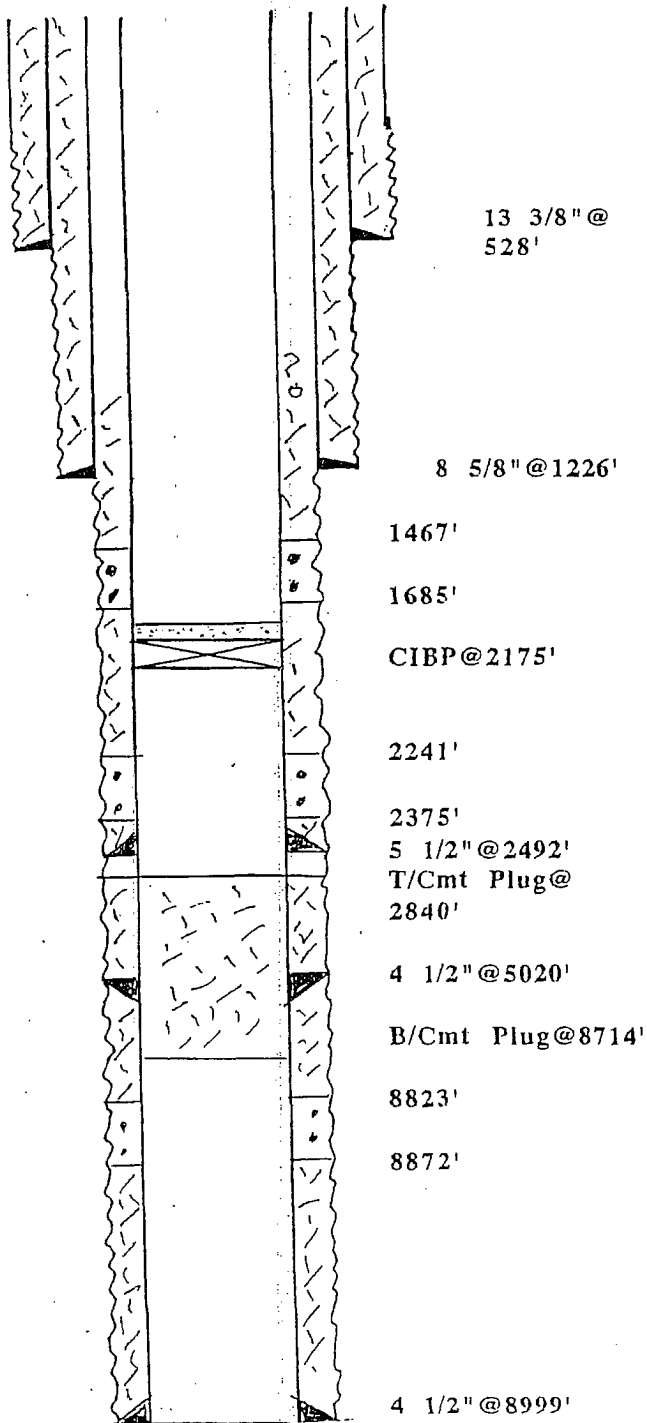
4/19/88-P/2 BOPD, 3 MCFGPD & 36 BWPD. San Andres

Cumulative Production:

2041 BO (7/93)

Status:

P/23 BOPM (7/93)



TD 9000'

YATES PETROLEUM CORPORATION

Well: Brown-Yates #1

Field: Penasco Draw San Andres-Yeso

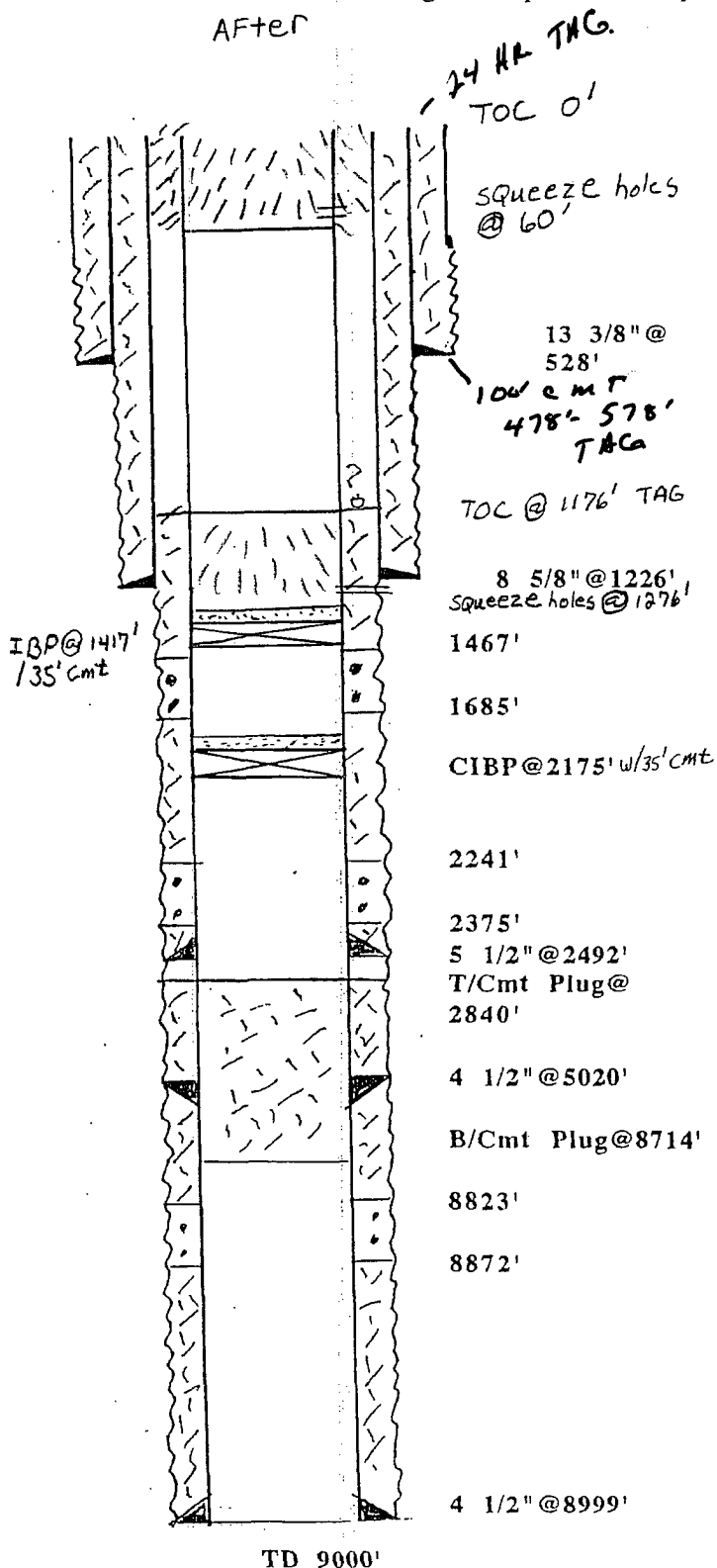
Elevation: 3451' gl TD: 9000' PBTD: 2901' Spud: 12/17/70

David Faskin original oper. Yates oper from 11/1/80

Location: 24I, 18S, 25E

Eddy Co, NM

AFTER



Casing And Cementing:

13 3/8" 48# J-55 @ 528'. Cmted with 520 sxs. Ciec cmt.

8 5/8" 24# J-55 @ 1226". Cmted with 750 sxs. TOC @ 580'. Pmped 200 sxs dn annulus.

4 1/2" 11.6 & 10.5# @ 8999'. Cmted with 500 sxs. TOC @ 6376'. Pulled from 5020' 10/23/80.

5 1/2" 14# J-55 @ 2492' 450 sxs. 11/10/80.

Formations:

T/Queen @ 30'

T/Grayburg @ 355'

T/San Andres @ 812'

T/Glorietta @ 2155'

T/Blinberry @ 2255'

T/Abo @ 4345'

T/Wolfcamp @ 5680'

T/Barnett(Miss) @ 8872'

Original Completion

2/3/71-Perf 8823-8872. P&A

12/8/80-Perf 2241'-2375'. Frac with 60000 gal water & 90000# sand.

Potential:

12/14/80-P/16 BOPD, 27 MCFGPD & 5 BWPD

Recompletions:

2/19/88-Set CIBP @ 2135'. Perf 1467-1685'. Frac with 60000 gal gelledwater & 40000# sand.

4/19/88-P/2 BOPD, 3 MCFGPD & 36 BWPD. San Andres

Cumulative Production:

2041 BO (7/93)

Status:

P/23 BOPM (7/93)