

District I  
1625 N. French Dr., Hobbs, NM 88240  
District II  
1301 W. Grand Avenue, Artesia, NM 88210  
District III  
1000 Rio Brazos Road, Aztec, NM 87410  
District IV  
1220 S. St. Francis Dr., Santa Fe, NM 87505

State of New Mexico  
Energy Minerals and Natural Resources

Oil Conservation Division  
1220 South St. Francis Dr.  
Santa Fe, NM 87505

RECEIVED

AUG 05 2004

OCD-ARTESIA

Form C-101  
March 4, 2004

Submit to appropriate District Office  
State Lease - 6 Copies  
Fee Lease - 5 Copies

☒ AMENDED REPORT

**APPLICATION FOR PERMIT TO DRILL, RE-ENTER, DEEPEN, PLUGBACK, OR ADD A ZONE**

<sup>1</sup> Operator Name and Address Gruy Petroleum Management Co.		<sup>2</sup> OGRID Number 162683
		<sup>3</sup> API Number 30 - 015-33221
<sup>3</sup> Property Code 33378	<sup>5</sup> Property Name White Cite 33 Unit Com	<sup>6</sup> Well No. 003

**<sup>7</sup> Surface Location**

UL or lot no. A	Section 33	Township 24S	Range 26E	Lot Idn	Feet from the 1300	North/South line North	Feet from the 800	East/West line East	County Eddy
--------------------	---------------	-----------------	--------------	---------	-----------------------	---------------------------	----------------------	------------------------	----------------

**<sup>8</sup> Proposed Bottom Hole Location If Different From Surface**

UL or lot no.	Section	Township	Range	Lot Idn	Feet from the	North/South line	Feet from the	East/West line	County
---------------	---------	----------	-------	---------	---------------	------------------	---------------	----------------	--------

<sup>9</sup> Proposed Pool 1 White City Penn (Gas) 87280	<sup>10</sup> Proposed Pool 2
---	-------------------------------

**Drilling Pit Location and Other Information**

UL or lot no.	Section	Township	Range	Lot Idn	Feet from the	North/South line	Feet from the	East/West line	County
Depth to ground water 300'				Distance from nearest fresh water well Greater than 1000'		Distance from nearest surface water Greater than 1000'			
<sup>11</sup> Work Type Code New Well		<sup>12</sup> Well Type Code Gas		<sup>13</sup> Cable/Rotary Rotary		<sup>14</sup> Lease Type Code Private		<sup>15</sup> Ground Level Elevation 3344'	
<sup>16</sup> Multiple No		<sup>17</sup> Proposed Depth 13000		<sup>18</sup> Formation Penn		<sup>19</sup> Contractor Patterson		<sup>20</sup> Spud Date 09-22-04	

**<sup>21</sup> Proposed Casing and Cement Program**

Hole Size	Casing Size	Casing weight/foot	Setting Depth	Sacks of Cement	Estimated TOC
17 1/2"	13 3/8"	54.5 #	350'	490	surface
12 1/4"	10 3/4"	45.5 #	1900	950	surface
9 7/8"	7 5/8"	26.40 #	8200'	1200	surface
6 3/4"	5 1/2" Liner	17 #	tol 7700 bol 13000	235	7700'

<sup>22</sup> Describe the proposed program. If this application is to DEEPEN or PLUG BACK, give the data on the present productive zone and proposed new productive zone. Describe the blowout prevention program, if any. Use additional sheets if necessary. Drill to 13000 and test Morrow/Penn formation. If successful complete as producer in White City Penn Field. From the base of the surface pipe through the running of the production casing the well will be equipped with a 5000 psi BOP system.

<sup>23</sup> I hereby certify that the information given above is true and complete to the best of my knowledge and belief. I further certify that the drilling pit will be constructed according to NMOCD guidelines ☒, a general permit ☐, or an (attached) alternative OCD-approved plan ☐.

Signature:

*Zeno Farris*

Printed name: Zeno Farris

Title: Manager, Operations Administration

E-mail Address: zfarris@magnumhunter.com

Date: 8-3-04

Phone: 972-443-6489

OIL CONSERVATION DIVISION

Approved by:

TIM W. GUM  
DISTRICT II SUPERVISOR

Title:

Approval Date: AUG 06 2004

Expiration Date: AUG 06 2005

Conditions of Approval:

Attached ☐

600 East Las Colinas Blvd.  
Suite 1100  
Irving, TX 75039  
P: 972-401-3111  
F: 469-420-2710

# Gruy Petroleum Management Co

August 4, 2004

New Mexico Oil Conservation Division  
1301 W. Grand Ave.  
Artesia, NM 88210-2834  
Attn: Mr. Bryan Arrant

**RECEIVED**  
AUG 05 2004  
OCD-ARTESIA

Re: White City 33 Unit Com No. 3 (Resubmit)  
30-015-33221  
Eddy County, NM

Dear Mr. Arrant:

Please find enclosed one (1) original and six (6) copies of each of the following forms for the above referenced well:

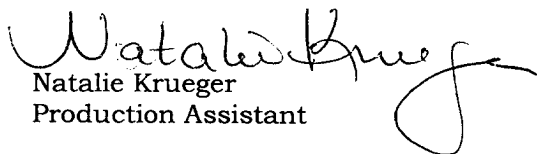
- 1.) Form C-101, Application for Permit to Drill, Re-enter, Deepen, Plugback, or Add a Zone
- 2.) Form C-102, Well Location and Acreage Dedication Plat

Please note that our original H2S plan still applies, as we do not expect any H2S gas from this well.

Also, per Van Barton, our C-144 for this well is still acceptable as well.

If you have any questions, or need additional information, please feel free to give Zeno Farris a call at 972-443-6489.

Sincerely,

  
Natalie Krueger  
Production Assistant

Enclosures

[nkrueger@magnumhunter.com](mailto:nkrueger@magnumhunter.com)

DISTRICT I  
P.O. Box 1980, Hobbs, NM 88241-1980

State of New Mexico  
Energy, Minerals and Natural Resources Department

Form C-102  
Revised February 10, 1994  
Submit to Appropriate District Office  
State Lease - 4 Copies  
Fee Lease - 3 Copies

DISTRICT II  
P.O. Drawer DD, Artesia, NM 88211-0719

DISTRICT III  
1000 Rio Brazos Rd., Aztec, NM 87410

DISTRICT IV  
P.O. BOX 2088, SANTA FE, N.M. 87504-2088

OIL CONSERVATION DIVISION  
P.O. Box 2088  
Santa Fe, New Mexico 87504-2088

☐ AMENDED REPORT

WELL LOCATION AND ACREAGE DEDICATION PLAT

API Number 30-015-33221	Pool Code 87280	Pool Name White City; Penn (Gas)
Property Code 33378	Property Name WHITE CITY 33 UNIT COM	Well Number 3
OGRID No. 162683	Operator Name GRUY PETROLEUM MANAGEMENT COMPANY	Elevation 3344'

Surface Location

UL or lot No. A	Section 33	Township 24 S	Range 26 E	Lot Idn	Feet from the 1300	North/South line NORTH	Feet from the 800	East/West line EAST	County EDDY
--------------------	---------------	------------------	---------------	---------	-----------------------	---------------------------	----------------------	------------------------	----------------

Bottom Hole Location If Different From Surface

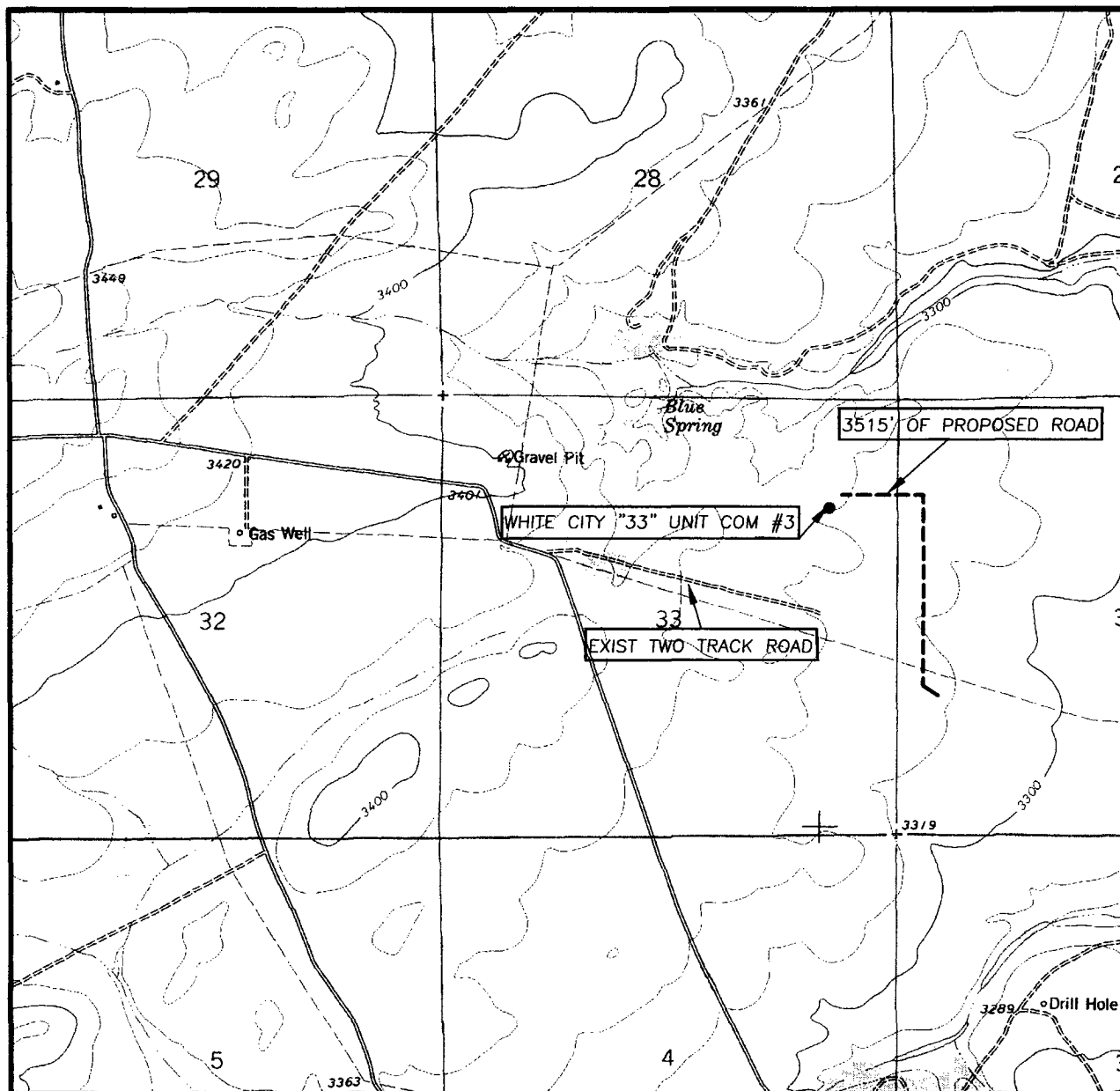
UL or lot No.	Section	Township	Range	Lot Idn	Feet from the	North/South line	Feet from the	East/West line	County
---------------	---------	----------	-------	---------	---------------	------------------	---------------	----------------	--------

Dedicated Acres 640	Joint or Infill Y	Consolidation Code C	Order No.
------------------------	----------------------	-------------------------	-----------

NO ALLOWABLE WILL BE ASSIGNED TO THIS COMPLETION UNTIL ALL INTERESTS HAVE BEEN CONSOLIDATED  
OR A NON-STANDARD UNIT HAS BEEN APPROVED BY THE DIVISION

	<p><b>OPERATOR CERTIFICATION</b></p> <p>I hereby certify the the information contained herein is true and complete to the best of my knowledge and belief.</p> <p><u>Zeno Farris</u> Signature Zeno Farris Printed Name Manager; Operations Admin. Title August 4, 2004 Date</p> <p><b>SURVEYOR CERTIFICATION</b></p> <p>I hereby certify that the well location shown on this plat was plotted from field notes of actual surveys made by me or under my supervision, and that the same is true and correct to the best of my belief.</p> <p>MAY 26, 2004 Date Surveyed JR Signature &amp; Seal of Professional Surveyor GARY EDISON 04-11-0615 Certificate No. GARY EDISON 12641</p>
--	--

# LOCATION VERIFICATION MAP



SCALE: 1" = 2000'

CONTOUR INTERVAL:  
BLACK RIVER VILLAGE, N.M. - 20'

SEC. 33 TWP. 24-S RGE. 26-E

SURVEY N.M.P.M.

COUNTY EDDY

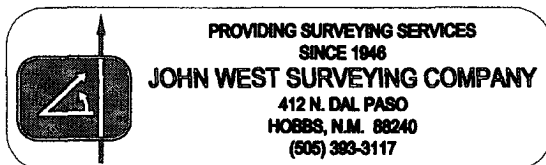
DESCRIPTION 1300' FNL & 800' FEL

ELEVATION 3344'

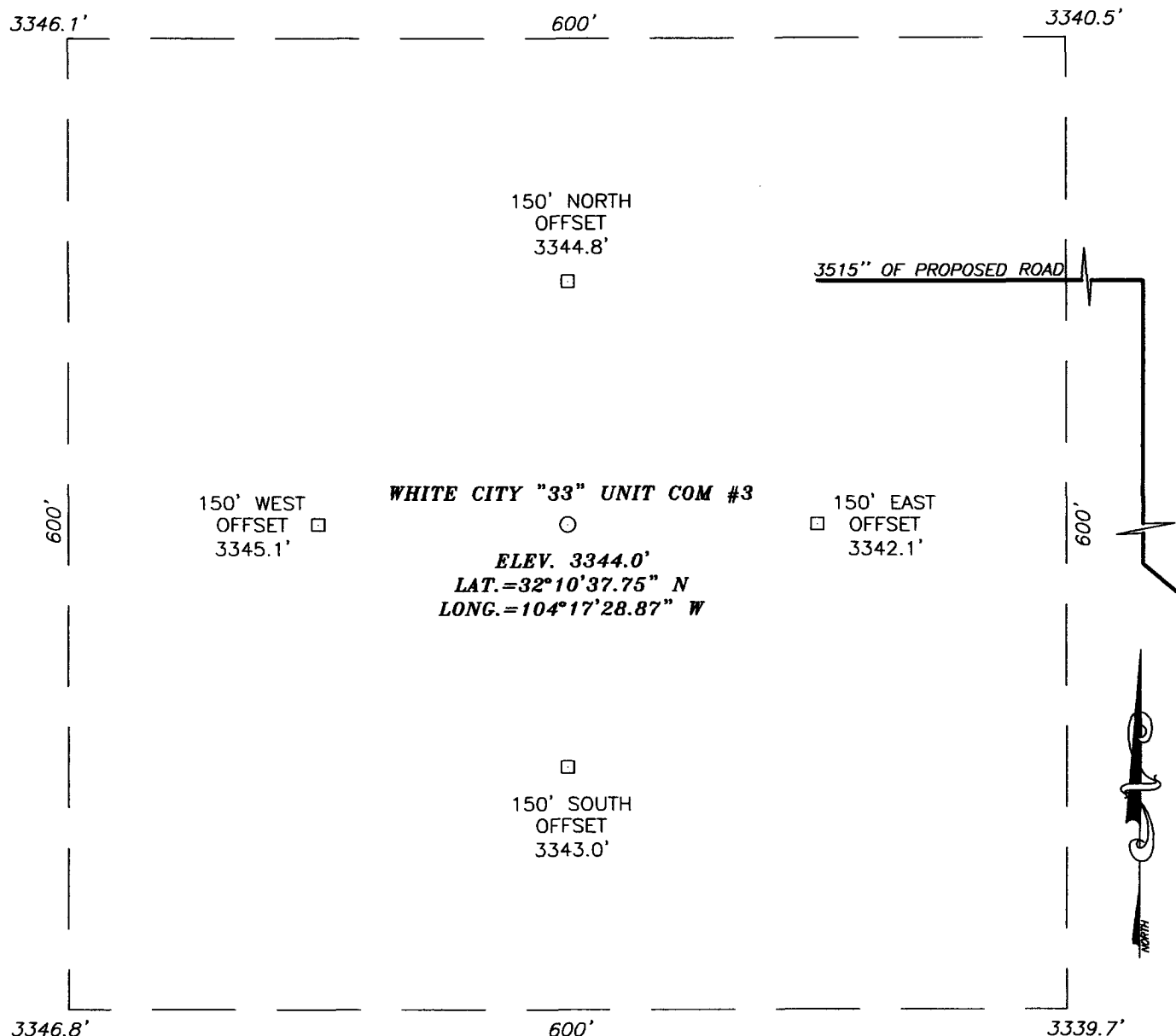
GRUY PETROLEUM  
OPERATOR MANAGEMENT COMPANY

LEASE WHITE CITY "33" UNIT COM

U.S.G.S. TOPOGRAPHIC MAP  
BLACK RIVER VILLAGE, N.M.

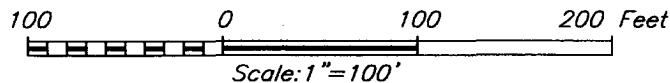


**SECTION 33, TOWNSHIP 24 SOUTH, RANGE 26 EAST, N.M.P.M.,**  
**EDDY COUNTY, NEW MEXICO**



**DIRECTIONS TO LOCATION**

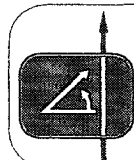
FROM THE INTERSECTION OF CO. RD. #722 (MEANS) AND CO. RD. #426 (CREOSOTE), GO EAST ON CO. RD. #426 0.9 MILES TO BEND IN ROAD. GO SOUTH 0.1 MILES ALONG CALICHE ROAD. GO EAST 0.1 MILES TO A WELL AND BATTERY (TEXACO WHITE CITY COM #1) FOLLOW TWO TRACK ROAD ON EL PASO PIPELINE R.O.W. FOR APPROX. 3000', LOCATION WILL BE APPROX. 1300' NORTH.



**GRUY PETROLEUM MANAGEMENT COMPANY**

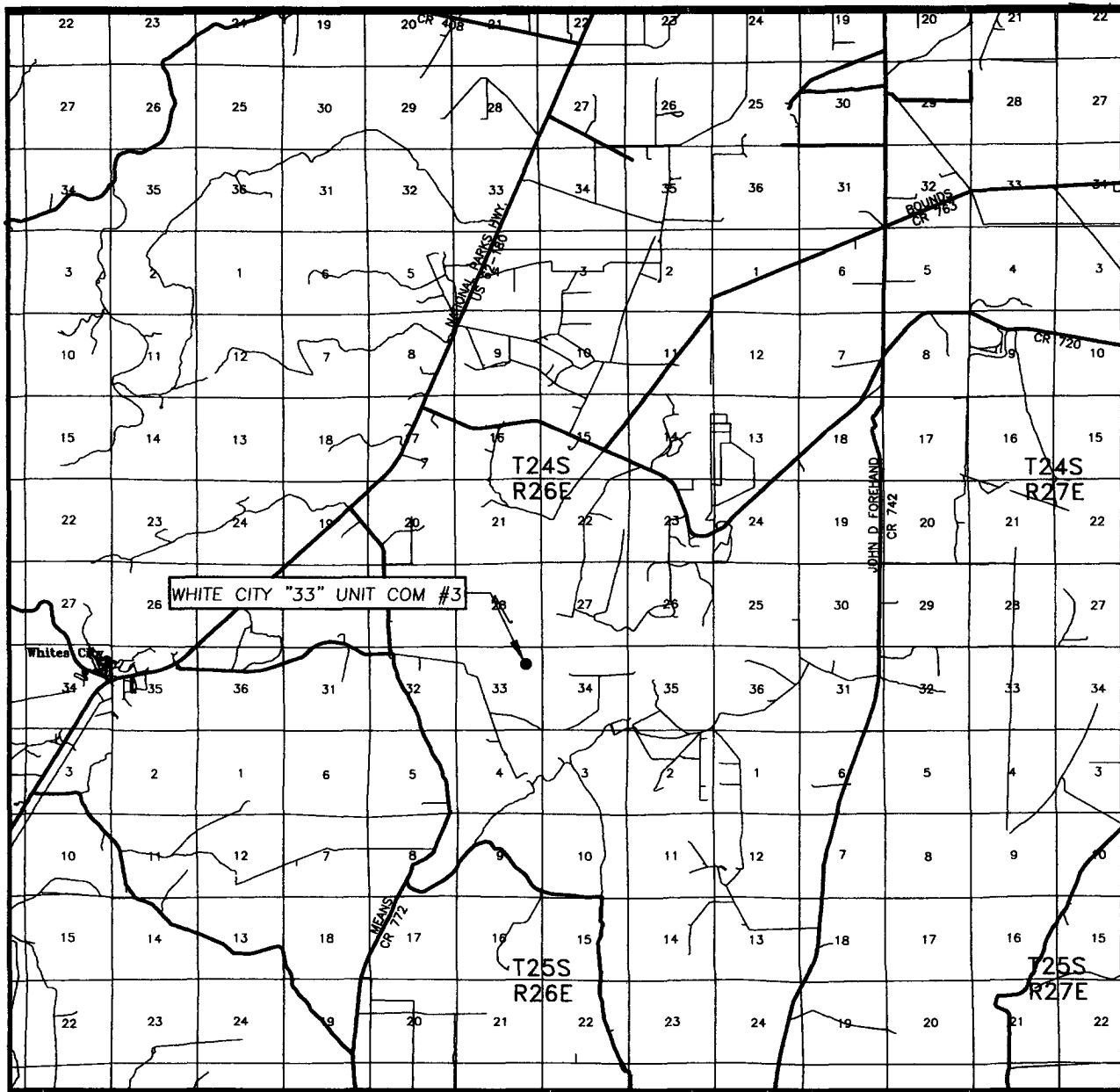
WHITE CITY "33" UNIT COM #3 WELL  
 LOCATED 1300 FEET FROM THE NORTH LINE  
 AND 800 FEET FROM THE EAST LINE OF SECTION 33,  
 TOWNSHIP 24 SOUTH, RANGE 26 EAST, N.M.P.M.,  
 EDDY COUNTY, NEW MEXICO.

Survey Date: 05/26/04	Sheet 1 of 1 Sheets
W.O. Number: 04.11.0615	Dr By: J. RIVERO
Date: 06/1/04	Disk: CD#10
04110615	Scale: 1"=100'



PROVIDING SURVEYING SERVICES  
 SINCE 1946  
**JOHN WEST SURVEYING COMPANY**  
 412 N. DAL PASO  
 HOBBS, N.M. 88240  
 (505) 383-3117

# VICINITY MAP



SCALE: 1" = 2 MILES

SEC. 33 TWP. 24-S RGE. 26-E

SURVEY N.M.P.M.

COUNTY EDDY

DESCRIPTION 1300' FNL & 800' FEL

ELEVATION 3344'

GRUY PETROLEUM  
OPERATOR MANAGEMENT COMPANY

LEASE WHITE CITY "33" UNIT COM

