

## District I

1625 N. French Dr., Hobbs, NM 88240

## District II

1301 W. Grand Avenue, Artesia, NM 88210

## District III

1000 Rio Brazos Road, Aztec, NM 87410

## District IV

1220 S. St. Francis Dr., Santa Fe, NM 87505

State of New Mexico  
Energy Minerals and Natural Resources

Form C-101

May 27, 2004

Oil Conservation Division  
1220 South St. Francis Dr.  
Santa Fe, NM 87505

RECEIVED

Submit to appropriate District Office

OCT 28 2004

☐ AMENDED REPORT

OCD-ARTESIA

## APPLICATION FOR PERMIT TO DRILL, RE-ENTER, DEEPEN, PLUGBACK, OR ADD A ZONE

Operator Name and Address Mewbourne Oil Company Po Box 5270 Hobbs, NM 88240		OGRID Number 14744
Property Code		API Number 30 - 015-37686
Property Name Black River 26 State Corn		Well No. 1
Proposed Pool 1 South Carlsbad Morrow		Proposed Pool 2

## 7 Surface Location

UL or lot no.	Section	Township	Range	Lot Idn	Feet from the	North/South line	Feet from the	East/West line	County
H	26	23S	26E		1980	N	660	E	Eddy

## No8 Proposed Bottom Hole Location If Different From Surface

UL or lot no.	Section	Township	Range	Lot Idn	Feet from the	North/South line	Feet from the	East/West line	County
---------------	---------	----------	-------	---------	---------------	------------------	---------------	----------------	--------

## Additional Well Information

Work Type Code N	Well Type Code G	Cable/Rotary R	Lease Type Code S	Ground Level Elevation 3238'
Multiple No	Proposed Depth 12500	Formation Morrow	Contractor TBA	Spud Date ASAP
Depth to Groundwater 50' or more but less than 100		Distance from nearest fresh water well Less than 1000 from all other wtr sources		Distance from nearest surface water 1000' or more
Pit: Liner: Synthetic <input checked="" type="checkbox"/> _____ mils thick Clay <input type="checkbox"/> Pit Volume: 24000 _____ bbls Drilling Method: Production Closed-Loop System <input type="checkbox"/> Fresh Water <input checked="" type="checkbox"/> Brine <input checked="" type="checkbox"/> Diesel/Oil-based <input type="checkbox"/> Gas/Air <input type="checkbox"/>				

## 21 Proposed Casing and Cement Program

Hole Size	Casing Size	Casing weight/foot	Setting Depth	Sacks of Cement	Estimated TOC
17 1/2"	13 3/8"	48#	500'	500	Surface
12 1/4"	9 5/8"	40#	4000'	1400	Surface
8 3/4"	5 1/2"	17#	12100'	1100	500' above top productive zone

22 Describe the proposed program. If this application is to DEEPEN or PLUG BACK, give the data on the present productive zone and proposed new productive zone. Describe the blowout prevention program, if any. Use additional sheets if necessary.

BOP Program: 2k Hydril (see Exhibit #2) from surface casing to intermediate TD. Schaffer LWS or equivalent (Double-Ram Hydraulic) 900 series with Hydril 900 Series (See Exhibit #2A) from intermediate casing to total depth. Rotating head, PVT, flow monitors and mud gas Separator from the Wolfcamp to TD.

Mud Program:

0' to 500' Fresh Water, spud mud, lime for PH and LCM as needed for seepage.  
 500' to 4000' Brine Water Water, lime for PH and LCM as needed for seepage.  
 4000' to TD Cut brine. 9.3 #/g, Caustic for PH, Starch for WL control and LCM as needed for seepage

CEMENT TO COVER ALL OIL,  
GAS AND WATER BEARING  
ZONES

23 I hereby certify that the information given above is true and complete to the best of my knowledge and belief. I further certify that the drilling pit will be constructed according to NMOCD guidelines ☒ a general permit ☐, or an (attached) alternative OCD-approved plan ☐.

Printed name: Kristi Green

Title: Hobbs Production

E-mail Address:

Date: 10/25/04

Phone:

## OIL CONSERVATION DIVISION

Approved by:

TIM W. GUM

Title:

DISTRICT II SUPERVISOR

Approval Date:

OCT 28 2004

Expiration Date:

OCT 28 2005

Conditions of Approval Attached ☐

French Dr., Hobbs, NM 88240  
Grand Avenue, Artesia, NM 88210  
ct III  
Rio Brazos Road, Aztec, NM 87410  
istrict IV  
20 S. St. Francis Dr., Santa Fe, NM 87505

State of New Mexico  
Energy Minerals and Natural Resources

Oil Conservation Division  
1220 South St. Francis Dr.  
Santa Fe, NM 87505

Form C-144  
March 12, 2004

For drilling and production facilities, submit to appropriate NMOCD District Office.  
For downstream facilities, submit to Santa Fe office

**Pit or Below-Grade Tank Registration or Closure**

Is pit or below-grade tank covered by a "general plan"? Yes ☒ No ☐

Type of action: Registration of a pit or below-grade tank ☒ Closure of a pit or below-grade tank ☐

Operator: Mewbourne Oil Company Telephone: 505-393-5905 e-mail address: \_\_\_\_\_  
Address: PO Box 5270 Hobbs NM 88240  
Facility or well name: Black River "26" St Com #1 API #: \_\_\_\_\_ U/L or Qtr/Qtr H Sec 26 T23S R26E  
County: Eddy Latitude 32-16-38.5N Longitude 104-15-25.8W NAD: 1927 ☐ 1983 ☒  
Surface Owner Federal ☐ State ☒ Private ☐ Indian ☐

**Pit**

Type: Drilling ☒ Production ☐ Disposal ☐  
Workover ☐ Emergency ☐  
Lined ☒ Unlined ☐  
Liner type: Synthetic ☒ Thickness 12 mil Clay ☐  
Volume 24,000 bbl

**Below-grade tank**

Volume: \_\_\_\_\_ bbl Type of fluid: \_\_\_\_\_  
Construction material: \_\_\_\_\_  
Double-walled, with leak detection? Yes ☐ If not, explain why not.  
\_\_\_\_\_

Depth to ground water (vertical distance from bottom of pit to seasonal high water elevation of ground water.)	Less than 50 feet		(20 points)
	50 feet or more, but less than 100 feet	X	(10 points) 10
	100 feet or more		( 0 points)
Wellhead protection area: (Less than 200 feet from a private domestic water source, or less than 1000 feet from all other water sources.)	Yes		(20 points)
	No X		( 0 points) 0
Distance to surface water: (horizontal distance to all wetlands, playas, irrigation canals, ditches, and perennial and ephemeral watercourses.)	Less than 200 feet		(20 points)
	200 feet or more, but less than 1000 feet		(10 points)
	1000 feet or more X		( 0 points) 0
Ranking Score (Total Points)			10

**If this is a pit closure:** (1) attach a diagram of the facility showing the pit's relationship to other equipment and tanks. (2) Indicate disposal location:

onsite ☐ offsite ☐ If offsite, name of facility \_\_\_\_\_ (3) Attach a general description of remedial action taken including remediation start date and end date. (4) Groundwater encountered: No ☐ Yes ☐ If yes, show depth below ground surface \_\_\_\_\_ ft. and attach sample results. (5) Attach soil sample results and a diagram of sample locations and excavations.

I hereby certify that the information above is true and complete to the best of my knowledge and belief. I further certify that the above-described pit or below-grade tank has been/will be constructed or closed according to NMOCD guidelines ☒ a general permit ☐ or an (attached) alternative OCD-approved plan ☐.

Date: 10/25/04

Printed Name/Title Kristi Green / Hobbs Regulatory Signature Kristi Green

Your certification and NMOCD approval of this application/closure does not relieve the operator of liability should the contents of the pit or tank contaminate ground water or otherwise endanger public health or the environment. Nor does it relieve the operator of its responsibility for compliance with any other federal, state, or local laws and/or regulations.

Approval: OCT 27 2004 Gild Sep ID  
Date: \_\_\_\_\_ Signature [Signature]  
Printed Name/Title \_\_\_\_\_

DISTRICT I  
1626 N. French Dr., Hobbs, NM 88240  
DISTRICT II  
811 South First, Artesia, NM 88210

DISTRICT III  
1000 Rio Brazos Rd., Aztec, NM 87410

DISTRICT IV  
2040 South Pacheco, Santa Fe, NM 87505

State of New Mexico  
Energy, Minerals and Natural Resources Department

Form C-102  
Revised March 17, 1999  
Instruction on back  
Submit to Appropriate District Office  
State Lease - 4 Copies  
Fee Lease - 3 Copies

OIL CONSERVATION DIVISION  
P.O. Box 2088  
Santa Fe, New Mexico 87504-2088

☐ AMENDED REPORT

WELL LOCATION AND ACREAGE DEDICATION PLAT

API Number	Pool Code	Pool Name South Carlsbad Morrow
Property Code	Property Name BLACK RIVER "26" STATE COM.	Well Number 1
OGRID No. 14744	Operator Name MEWBOURNE OIL COMPANY	Elevation 3238

Surface Location

UL or lot No. H	Section 26	Township 23S	Range 26E	Lot Idn	Feet from the 1980	North/South line NORTH	Feet from the 660	East/West line EAST	County EDDY
--------------------	---------------	-----------------	--------------	---------	-----------------------	---------------------------	----------------------	------------------------	----------------

Bottom Hole Location If Different From Surface

UL or lot No.	Section	Township	Range	Lot Idn	Feet from the	North/South line	Feet from the	East/West line	County
Dedicated Acres 320	Joint or Infill	Consolidation Code	Order No.						

NO ALLOWABLE WILL BE ASSIGNED TO THIS COMPLETION UNTIL ALL INTERESTS HAVE BEEN CONSOLIDATED  
OR A NON-STANDARD UNIT HAS BEEN APPROVED BY THE DIVISION

				<b>OPERATOR CERTIFICATION</b>  I hereby certify the the information contained herein is true and complete to the best of my knowledge and belief.   Signature Kristi Green Printed Name Hobbs Regulatory Title 08/19/04 Date
<b>SURVEYOR CERTIFICATION</b>  I hereby certify that the well location shown on this plat was plotted from field notes of actual surveys made by me or under my supervision, and that the same is true and correct to the best of my belief.  8/17/2004 Date Surveyed  Signature & Seal of Professional Surveyor Herschel L. Ropes Certificate No. Herschel L. Ropes RLS 3640 BLACK RIVER 26-1 GENERAL SURVEYING COMPANY				

0 330' 660' 990' 1650' 1980' 2310' 2310' 1980' 1650' 990' 660' 330' 0'

## **MULTI-POINT SURFACE USE AND OPERATIONS PLAN**

### **MEWBOURNE OIL COMPANY**

Black River "26" State Com #1

1980' FNL & 660' FEL

Sec 26-T23S-R26E

Eddy County, New Mexico

This plan is submitted with Form 3160-3, Application for Permit to Drill, Covering the above described well. The purpose of this plan is to describe the location of the proposed well, the proposed construction activities and operations plan, the magnitude of the surface disturbance involved, and the procedures to be followed in restoring the surface so that a complete appraisal can be made of the environmental impact associated with the proposed operations.

#### **1. Existing Roads:**

- A. Exhibit #3 is a road map showing the location of the proposed well. Exhibit #3A is a topographic map showing the location of the proposed well and access road. Existing roads are highlighted in red and proposed roads are highlighted in yellow.
- B. **Directions to location: Go South from Carlsbad on US 62/180. South from NM Port of entry Station 1.8 miles. Turn Left on CR 771 (Skinner Road) and continue SE 1 mile. Take left fork and continue East 0.5 miles. 0.3 miles, turn East and go 0.3 miles to existing location. Turn NE on new road 0.3 miles to new location.**

#### **2. Proposed Access Road:**

- A. 1500' of new road will be needed. The road will enter location on the SW corner.
- B. The access to the location will be limited to 16' in width and will adequately drain runoff and control erosion as presently constructed.

#### **3. Location of Existing Wells:**

There are producing wells within the immediate vicinity of the well site. Exhibit #4 shows the proposed well and existing wells within a one mile radius.

#### **4. Location of Existing and/or Proposed Facilities:**

- A. There are no production facilities on this lease at the present time.
- B. In the event that the well is productive, production facilities will be located on the well pad.
- C. All production vessels left on location will be painted to conform with BLM painting stipulations within 180 days of installation.

**MULTI-POINT SURFACE USE AND OPERATIONS PLAN**

**MEWBOURNE OIL COMPANY**

Black River "26" St Com #1

Page 2

**5. Location and Type of Water Supply**

The well will be drilled with a combination of fresh water and brine water based mud systems. The water will be obtained from commercial suppliers in the area and/or hauled to the location by transport trucks over existing and proposed roads as indicated in Exhibit #3.

**6. Source of Construction Materials**

All material required for construction of the drill pad and access roads will be obtained from private, state, or federal pits. The construction contractor will be solely responsible for securing construction materials required for this operation and paying any royalties that may be required on those materials.

**7. Methods of Handling Waste Disposal:**

- A. Drill cuttings not retained for evaluation purposed will be disposed of in the reserve pit.
- B. Drilling fluids will be allowed to evaporate in the reserve pit prior to closure.
- C. Water produced during operations will be disposed of in the reserve pit.
- D. If any liquid hydrocarbons are produced during operations, those liquids will be stored in suitable tanks until sold.
- E. Current regulations regarding the proper disposal of human waste will be followed.
- F. All trash, junk, and other waste materials will be stored in proper containers to prevent dispersal and will be removed to an appropriate facility within one week of cessation of drilling and completion activities.

**8. Ancillary Facilities**

There are no ancillary facilities within the immediate vicinity of the proposed well site.

**9. Well Site Layout**

- A. A diagram of the drill pad is shown in Exhibit #5. Dimensions of the pad, pits, and location of major rig components are shown.
- B. The reserve pit will be lined with a high quality plastic sheeting to prevent migration of fluids as per OCD regulations.
- C. The pad dimension of 400' X 250' has been staked and flagged.
- D. An archaeological survey has been conducted on the proposed access road and location pad.

**MULTI-POINT SURFACE USE AND OPERATIONS PLAN**

**MEWBOURNE OIL COMPANY**

Black River "26" St Com #1

Page 3

**10. Plans for Restoration of Surface**

- A. Upon cessation of the proposed operations, if the well is abandoned, the location and road will be ripped and re-seeded per BLM guidelines. The reserve pit area, after allowing to dry will be leveled. The entire location will be restored to the original contour as much as reasonable possible. All trash, garbage, and pit lining will be hauled to appropriate disposal to assure the location is aesthetically pleasing as reasonable possible. All restoration work will be completed within 180 days of cessation of activities.
- B. The disturbed area will be restored by re-seeding during the proper growing season.
- C. Three sides of the reserve pit will be fenced prior to and during drilling operations. The reserve pit will be fenced on the fourth side after the drilling rig is removed to prevent the endangerment of livestock. The fence will remain in place until the pit area has been leveled and restored.
- D. Upon cessation of the proposed operations, if the well is not abandoned, the reserve pit area will be restored as per OCD guidelines. Any additional caliche required for production facilities will be obtained from a source as described in Section 6.

**11. Surface Ownership:**

The surface is owned by: State of New Mexico

**12. Other Information**

- A. Topography: Refer to the archaeological report for a detailed description of flora, fauna, soil characteristics, dwellings, and historical or cultural sites.
- B. The primary use of the surface at the location is for grazing of livestock.

**13. Operator's Representative:**

- A. Through APD approval and drilling operations:

**N.M. Young, District Manager**  
Mewbourne Oil Company  
PO Box 5270  
Hobbs, NM 88241  
505-393-5905

**MULTI-POINT SURFACE USE AND OPERATIONS PLAN**

**MEWBOURNE OIL COMPANY**

Black River "26" St Com #1

Page 4

B. Through completion and production operations:

**N.M. Young, District Manager**

Mewbourne Oil Company

PO Box 5270

Hobbs, NM 88241

505-393-5905

**14. Certification**

I hereby certify that I, or persons under my direct supervision, have inspected the proposed drill site and access route; that I am familiar with the conditions which currently exist; that the statements made in this plan are to the best of my knowledge, true and correct; and the work associated with the operations proposed herein will be performed by Mewbourne Oil Company, its contractors and subcontractors, in accordance with this plan and the terms and conditions under which it is approved. This statement is subject to the provisions of 18 U.S.C. 1001 for the filing of a false statement.

Date: 10/25/04

Signature: \_\_\_\_\_



NM Young

Mewbourne Oil Company

PO Box 5270

Hobbs, NM 88241

(505) 393-5905

## **Hydrogen Sulfide Drilling Operations Plan**

### **Mewbourne Oil Company**

Black River "26" State Com #1

1980' FNL & 660' FEL

Sec 26-T23S-R26E

Eddy County, New Mexico

#### **1. Hydrogen Sulfide Training**

All personnel, whether regularly assigned, contracted, or employed on an unscheduled basis, will have received training from a qualified instructor in the following areas prior to entering the drilling pad area of the well:

- 1 The hazards and characteristics of hydrogen sulfide gas.
- 2 The proper use of personal protective equipment and life support systems.
- 3 The proper use of hydrogen sulfide detectors, alarms, warning systems, briefing areas, evacuation procedures.
- 4 The proper techniques for first aid and rescue operations.

Additionally, supervisory personnel will be trained in the following areas:

- 1 The effects of hydrogen sulfide on metal components. If high tensile tubular systems are utilized, supervisory personnel will be trained in their special maintenance requirements.
- 2 Corrective action and shut in procedures, blowout prevention, and well control procedures while drilling a well.
- 3 The contents of the Hydrogen Sulfide Drilling Operations Plan.

There will be an initial training session prior to encountering a known hydrogen sulfide source. The initial training session shall include a review of the site specific Hydrogen Sulfide Drilling Operations Plan.

#### **2. Hydrogen Sulfide Safety Equipment and Systems**

All hydrogen sulfide safety equipment and systems will be installed, tested, and operational prior to drilling below the intermediate casing.

##### **1. Well Control Equipment**

- A. Flare line with automatic igniter or continuous ignition source.
- B. Choke manifold with minimum of one adjustable choke.
- C. Blowout preventers equipped with blind rams and pipe rams to accommodate all pipe sizes with properly sized closing unit
- D. Auxiliary equipment including rotating head and annular type blowout preventer.

2. Protective Equipment for Essential Personnel

Thirty minute self contained work unit located at briefing area as indicated on wellsite diagram.

3. Hydrogen Sulfide Protection and Monitoring Equipment

Two portable hydrogen sulfide monitors positioned on location for optimum coverage and detection. The units shall have audible sirens to notify personnel when hydrogen sulfide levels exceed 20 ppm.

4. Visual Warning Systems

A. Wind direction indicators as indicated on the wellsite diagram.

B. Caution signs shall be posted on roads providing access to location. Signs shall be painted a high visibility color with lettering of sufficient size to be readable at reasonable distances from potentially contaminated areas.

3. **Mud Program**

The mud program has been designed to minimize the amount of hydrogen sulfide entrained in the mud system. Proper mud weight, safe drilling practices, and the use of hydrogen sulfide scavengers will minimize hazards while drilling the well.

4. **Metallurgy**

All tubular systems, wellheads, blowout preventers, drilling spools, kill lines, choke manifolds, and valves shall be suitable for service in a hydrogen sulfide environment when chemically treated.

5. **Communications**

State & County Officials phone numbers are posted on rig floor and supervisors trailer. Communications in company vehicles and toolpushers are either two way radios or cellular phones.

6. **Well Testing**

Drill stem testing is not an anticipated requirement for evaluation of this well. A drill stem test is required, it will be conducted with a minimum number of personnel in the immediate vicinity. The test will be conducted during daylight hours only.

7. **General Requirements**

MOC has researched this area and no high concentrations of H<sub>2</sub>S was found. MOC will have on location and working all H<sub>2</sub>S safety equipment before Delaware formation at 2000'.

# Mewbourne Oil Company

BOP Scematic for

12 1/4" Hole

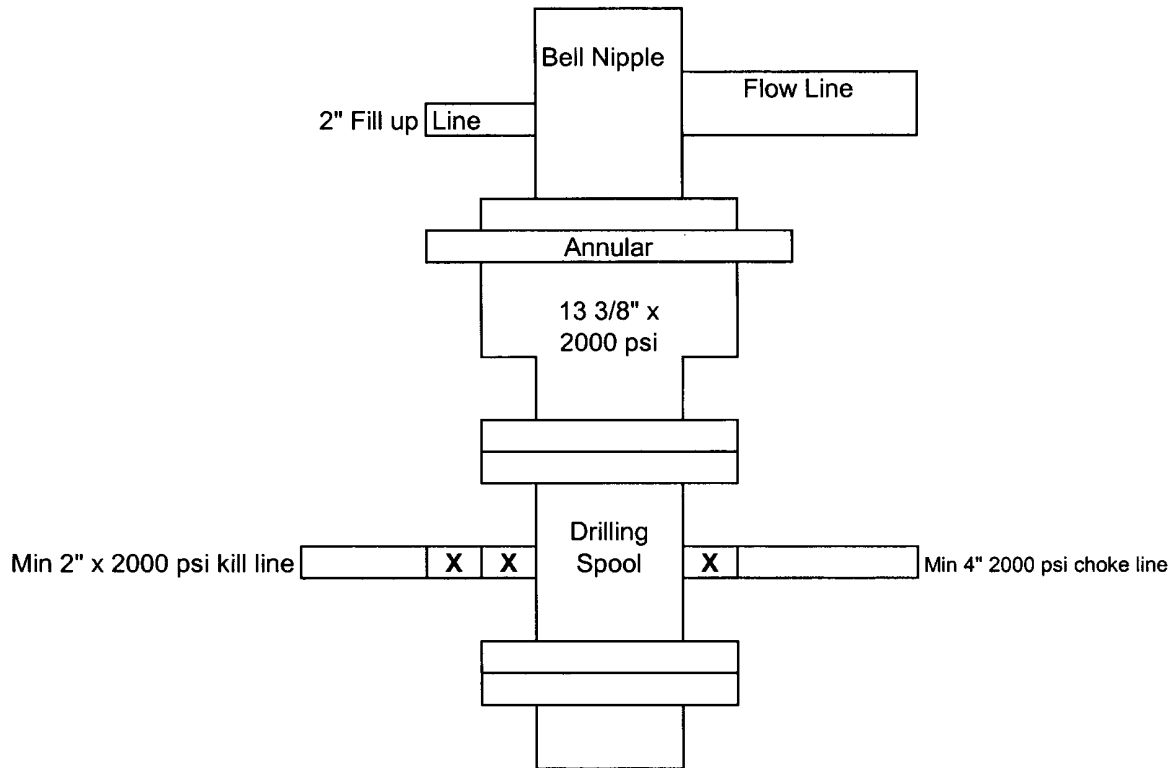


Exhibit #2

Black River "26" State Com #1  
1980' FNL & 660' FEL  
Section 26-T23S-R26E  
Eddy County, New Mexico

# Mewbourne Oil Company

BOP Scematic for  
8 3/4" or 7 7/8" Hole

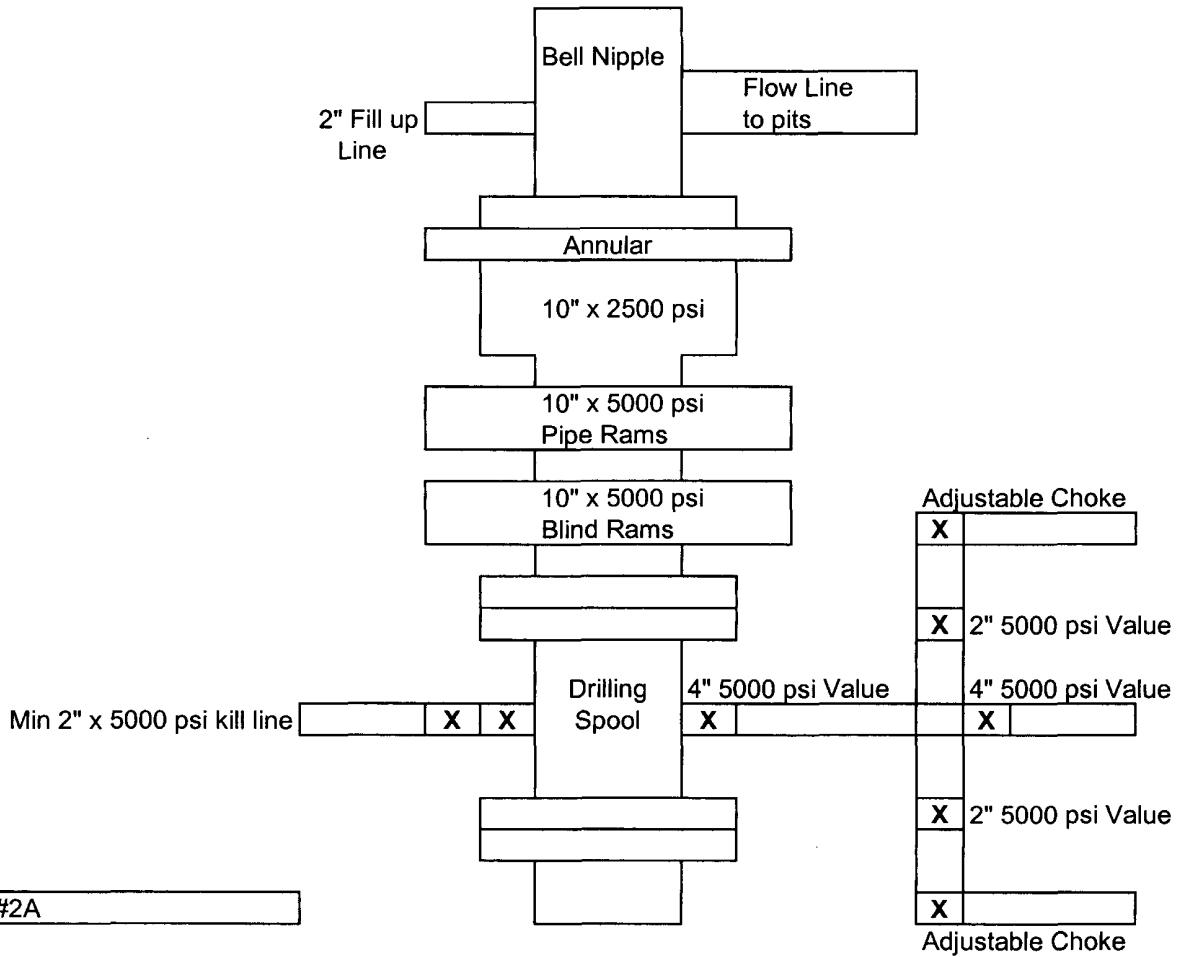
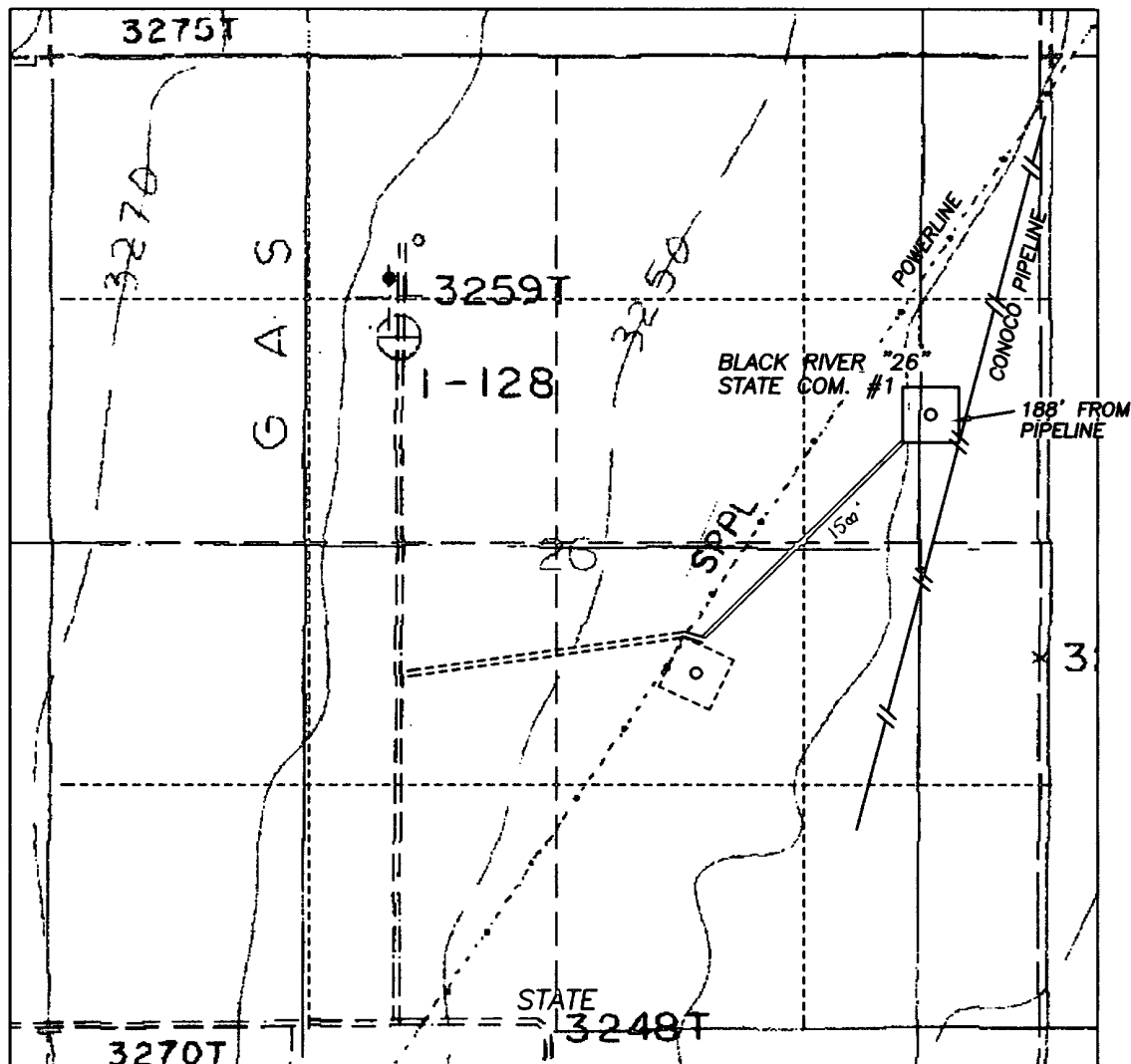


Exhibit #2A

Black River "26" State Com #1  
1980' FNL & 660' FEL  
Section 26-T23S-R26E  
Eddy County, New Mexico

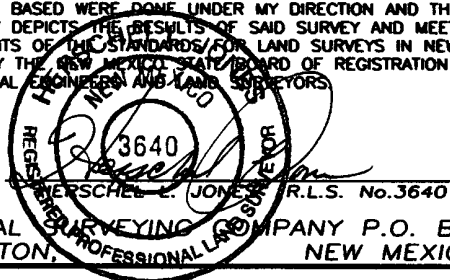
SECTION 26, TOWNSHIP 23 SOUTH, RANGE 26 EAST, NMPM, EDDY COUNTY, NEW MEXICO.



## Exhibit 3

1000' 0 1000' 2000'  
Scale 1" = 1000'

THE PREPARATION OF THIS PLAT AND THE PERFORMANCE OF THE SURVEY UPON WHICH IT IS BASED WERE DONE UNDER MY DIRECTION AND THE PLAT ACCURATELY DEPICTS THE RESULTS OF SAID SURVEY AND MEET THE REQUIREMENTS OF THE STANDARDS FOR LAND SURVEYS IN NEW MEXICO AS ADOPTED BY THE NEW MEXICO STATE BOARD OF REGISTRATION FOR PROFESSIONAL ENGINEERS AND LAND SURVEYORS.



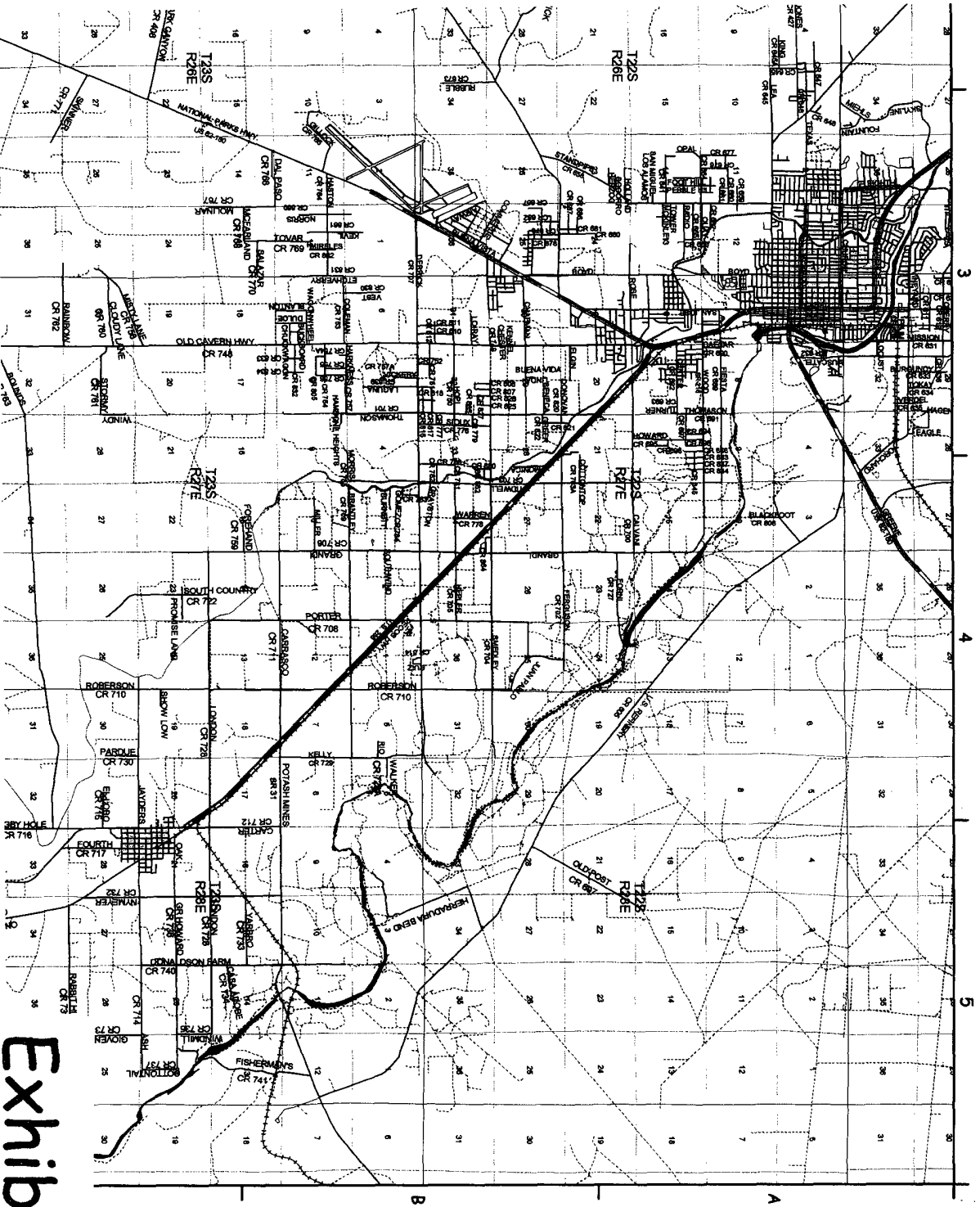
GENERAL SURVEYING COMPANY P.O. BOX 1928  
LOVINGTON, NEW MEXICO 88260

### MEWBOURNE OIL COMPANY

LEASE ROAD TO ACCESS THE MEWBOURNE BLACK RIVER  
"26" STATE COM. #1 WELL, LOCATED IN SECTION 26,  
TOWNSHIP 23 SOUTH, RANGE 26 EAST, NMPM, EDDY  
COUNTY, NEW MEXICO.

Survey Date: 8/17/2004	Sheet 1 of 1 Sheets
Drawn By: Ed Blevins	W.O. Number
Date: 8/17/04	Scale 1" = 1000' BLACK RIVER

Continued on Page 12



Continued on Page 16

Exhibit 3A

**Exhibit #4**  
**Status of Wells in Immediate Vicinity**  
**Mewbourne Oil Company**  
Black River "26" State Com #1  
1980' FNL & 660' FEL  
Section 26-T23S-R26E  
Eddy County, New Mexico  
Lease #L-654

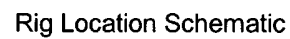
**Section 26-T23S-R26E**

Operator: Newfield Exploration Mid-Continent, Inc  
Well Name: New Mexico EU State Com #1  
Unit letter: J  
Status: Producing  
Field: Black River Atoka

Operator: Newfield Exploration Mid-Continent, Inc  
Well Name: New Mexico EU State Com #1  
Unit letter: L  
Status: Producing  
Field: Carlsbad Morrow North

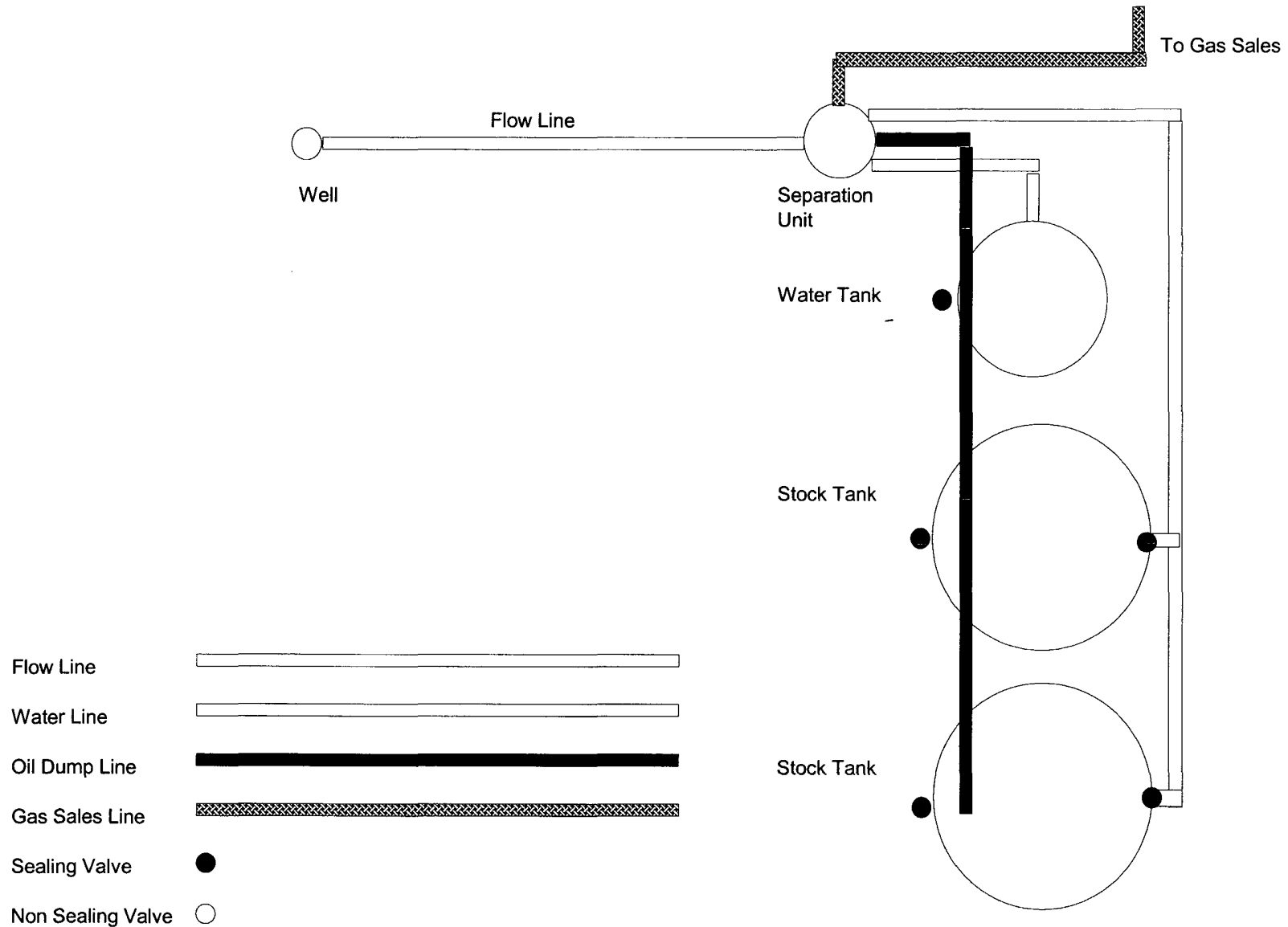
N

Reserve Pit  
150 x 150'



### Rig Location Schematic

## Proposed Production Facilities Schematic



**Mewbourne Oil Company**

Exhibit # 6

Proposed Production Facilities Schematic

Black River "26" State Com #1

1980' FNL & 660' FEL

Section 26-T23S-R26E

Eddy County, New Mexico