

NEW MEXICO OIL CONSERVATION DIVISION  
SOUTHEAST NEW MEXICO PACKER LEAKAGE TEST

30-015-20799

Operator Devon Louisiana Corporation Lease Burton Flat Deep Unit Well No. 3  
Location Of Well: Unit 891012391A Sec. 3 Township T21S Range R27E County Eddy

	Name of Reservoir or Pool	Type of Prod. (Oil or Gas)	Method of Prod. (Flow Art. Lift)	Prod. Medium (Tbg. Or Cag.)	Choke Size
Upper Completion	Strawn	Gas	Flow	TBG	
Lower Completion	Morrow	Gas	Flow	TBG	

**FLOW TEST NO. 1**

Both zones shut-in at (hour, date): 10/11/2004 3:20pm

Well opened at (hour, date): 10/12/2004 3:00pm

	Upper Completion	Lower Completion
Indicate by (X) the zone producing.....	XXX	
Pressure at beginning of test.....	937#	1579#
Stabilized? (Yes or No).....	NO	NO
Maximum pressure during test.....	937#	1660#
Minimum pressure during test.....	43#	1579#
Pressure at conclusion of test.....	43#	1581#
Pressure change during test (Maximum minus Minimum).....	894#	81#
Was pressure change an increase or a decrease?.....	Decrease	Increase

RECEIVED  
OCT 22 2004  
OBB-ARTESIA

Well closed at (hour, date): 10/13/2004 2:30pm Total Time On Production 23 hrs 30 min

Oil Production During Test: 0 bbls; Grav. \_\_\_\_\_; Gas Production During Test: 82.0 MCF; GOR \_\_\_\_\_

Remarks: \_\_\_\_\_

**FLOW TEST NO. 2**

Both zones shut-in at (hour, date): 10/13/2004 2:30pm

Well opened at (hour, date): 10/14/2004 1:35pm

	Upper Completion	Lower Completion
Indicate by (X) the zone producing.....		XXX
Pressure at beginning of test.....	1260#	1498#
Stabilized? (Yes or No).....	No	No
Maximum pressure during test.....	1418#	1498#
Minimum pressure during test.....	1260#	590#
Pressure at conclusion of test.....	1418#	590#
Pressure change during test (Maximum minus Minimum).....	158#	908#
Was pressure change an increase or a decrease?.....	Increase	Decrease

Well closed at (hour, date): 10/15/2004 2:15pm Total Time On Production 24 hrs 40 min

Oil Production During Test: 0 bbls; Grav. \_\_\_\_\_; Gas Production During Test: 161.2 MCF; GOR \_\_\_\_\_

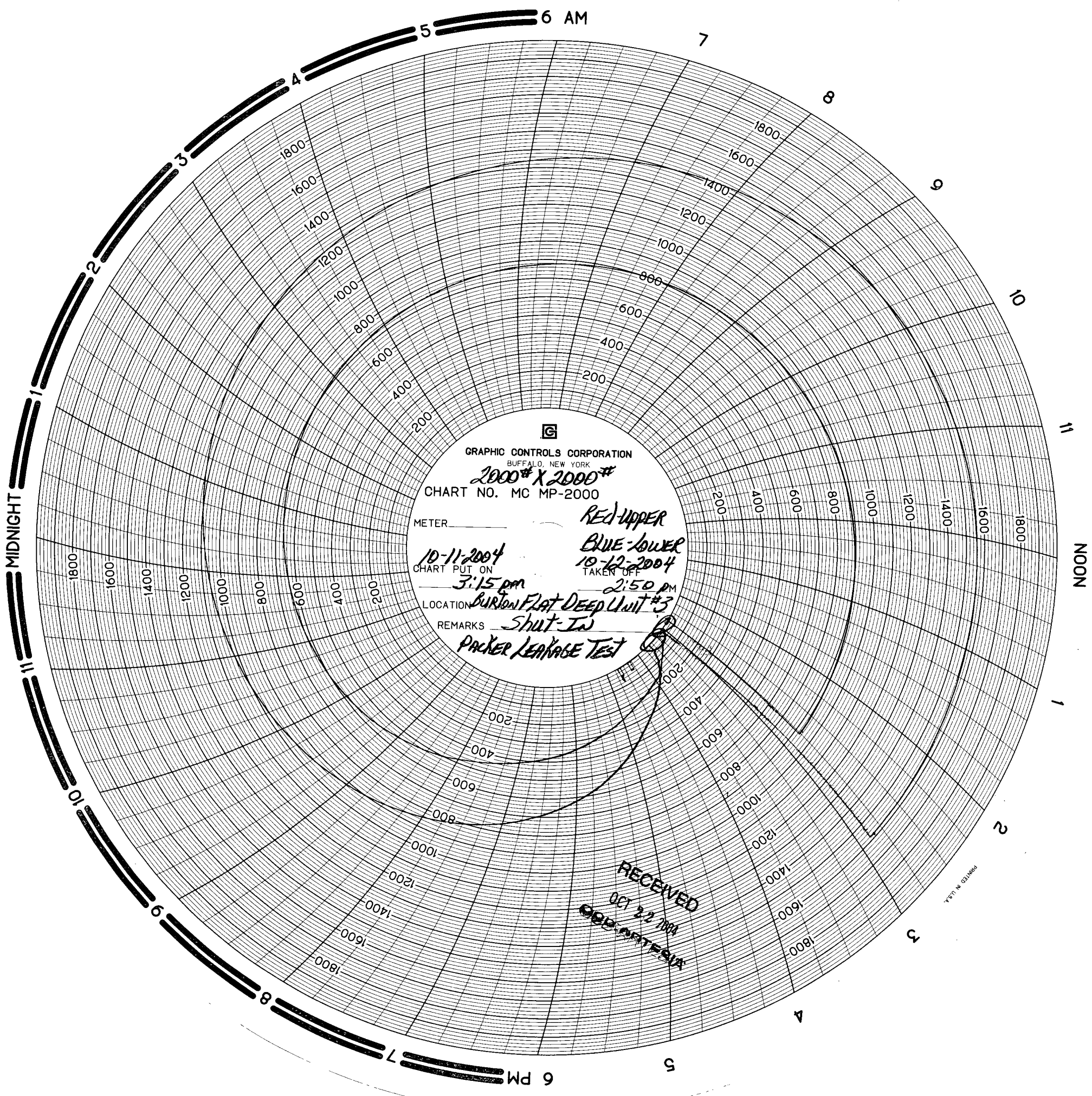
Remarks: \_\_\_\_\_

I hereby certify that the information herein contained is true and complete to the best of my knowledge.

Approved OCT 27 2004 \_\_\_\_\_ 20  
New Mexico Oil Conservation Division

By [Signature]  
Title \_\_\_\_\_

Operator Wildcat Measurement Service  
By [Signature]  
Title Don Norman/Technician  
E-mail Address \_\_\_\_\_  
Date 10/24/2004



GRAPHIC CONTROLS CORPORATION  
BUFFALO, NEW YORK

2000# X 2000#  
CHART NO. MC MP-2000

METER \_\_\_\_\_ *RED-UPPER*  
*BLUE-LOWER*  
CHART PUT ON *10-11-2004* *3:15 pm*  
TAKER OF *10-12-2004* *2:50 pm*  
LOCATION *BURTON FLAT DEEP UNIT #3*  
REMARKS *Shut-In*  
*PACKER LEAKAGE TEST*

RECEIVED  
OCT 22 2004  
G.D. PETERSON

PRINTED IN U.S.A.

GRAPHIC CONTROLS CORPORATION  
BUFFALO, NEW YORK

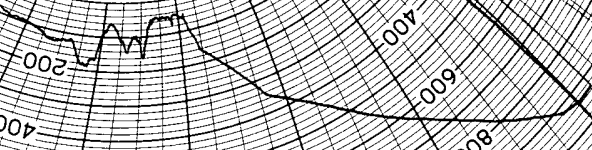
2000# X 2000#  
CHART NO. MC MP-2000

METER \_\_\_\_\_  
*Red-Upper*  
*Blue-Lower*

CHART PUT ON *10-12-2004 2:50 PM*  
TAKEN OFF *10-13-2004 2:25 PM*

LOCATION *BURTON FLAT DEEP UNIT #3*

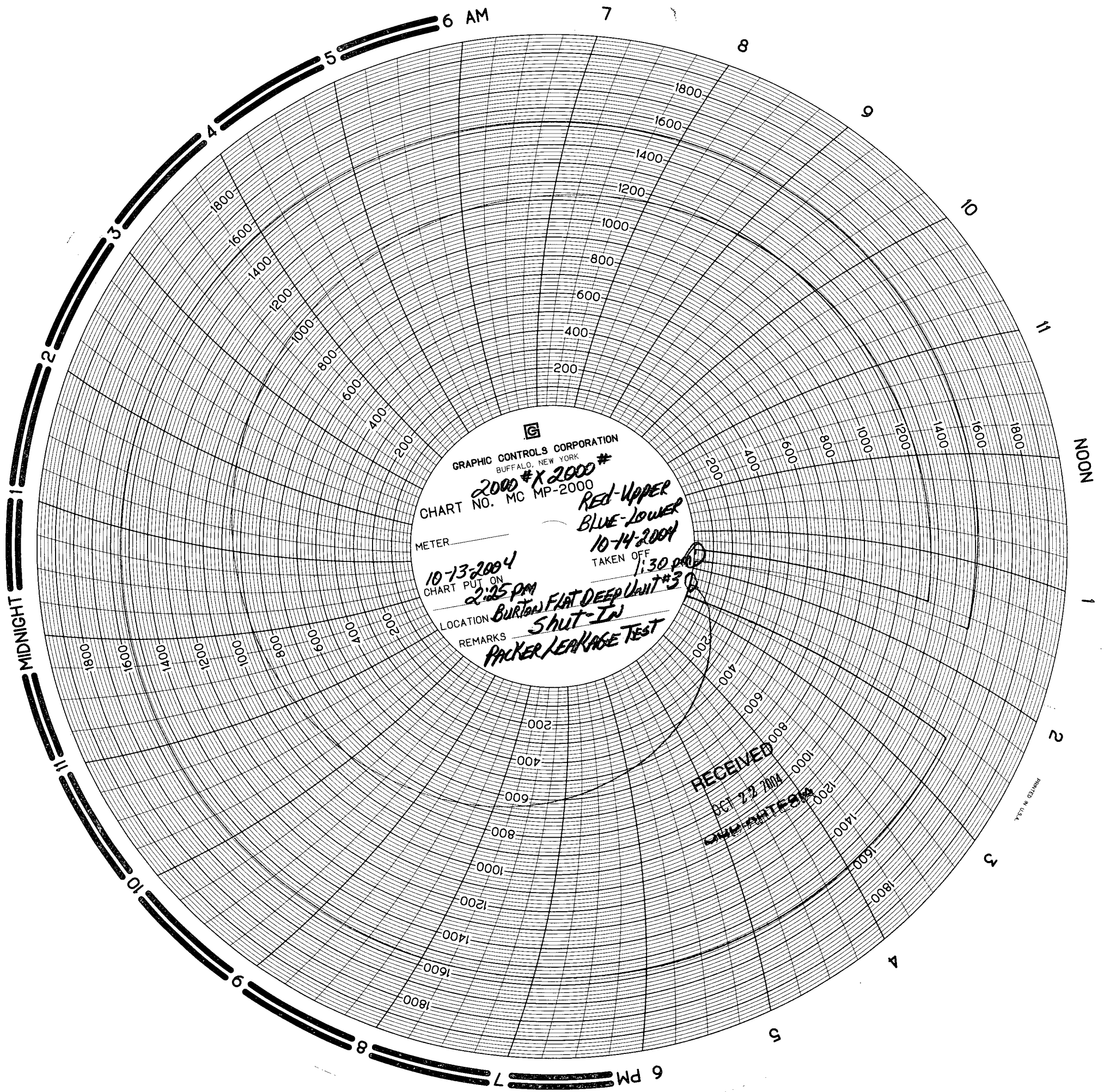
REMARKS *Flow - Upper*  
*Packer Leakage Test*



RECEIVED  
OCT 22 7 00 AM  
GRR-ARTERIA

MADE IN U.S.A.





GRAPHIC CONTROLS CORPORATION  
BUFFALO, NEW YORK

CHART NO. **2000 # X 2000 #**  
MC MP-2000

METER \_\_\_\_\_

CHART PUT ON  
**10-13-2004**  
**2:25 PM**

**RED-UPPER**  
**BLUE-LOWER**  
**10-14-2004**  
TAKEN OFF  
**1:30 PM**

LOCATION **BURTON FLAT DEEP UNIT #3**  
REMARKS **SHUT-IN**  
**PACKER LEAKAGE TEST**

RECEIVED  
OCT 23 2004  
MIDWESTERN

PRINTED IN U.S.A.

