

District I  
1625 N. French Dr., Hobbs, NM 88240  
District II  
1301 W. Grand Avenue, Artesia, NM 88210  
District III  
1000 Rio Brazos Road, Aztec, NM 87410  
District IV  
1220 S. St. Francis Dr., Santa Fe, NM 87505

State of New Mexico  
Energy Minerals and Natural Resources

Form C-144  
June 1, 2004

Oil Conservation Division  
1220 South St. Francis Dr.  
Santa Fe, NM 87505

For drilling and production facilities, submit to appropriate NMOCD District Office.  
For downstream facilities, submit to Santa Fe office

**Pit or Below-Grade Tank Registration or Closure**

Is pit or below-grade tank covered by a "general plan"? Yes X No ☐

Type of action: Registration of a pit or below-grade tank ☐ Closure of a pit or below-grade tank X

Operator: Yates Petroleum Corporation Telephone: 505-748-4500 e-mail address: mstubblefield@ypc.com

Address: 105 South 4<sup>th</sup> Street, Artesia, N.M.

Facility or well name: Anemone ANE Fed. #7 API #: 30-015-33044 U/L or Qtr/Qtr M Sec 9 T 22s R 24e

County: Eddy Latitude 32.40169 Longitude 104.50824 NAD: 1927 ☐ 1983 X Surface Owner Federal X State Private Indian ☐

Pit

Type: Drilling X Production ☐ Disposal ☐

Workover Emergency ☐

Lined X Unlined ☐

Liner type: Synthetic ☐ Thickness 12 mil Clay ☐

Pit Volume 25,000 bbls

Below-grade tank

Volume: bbl Type of fluid:

Construction material:

Double-walled, with leak detection? Yes ☐ If not, explain why not.

Depth to ground water (vertical distance from bottom of pit to seasonal high water elevation of ground water.)

Less than 50 feet  
50 feet or more, but less than 100 feet  
100 feet or more

(20 points)  
(10 points)  
( 0 points)X  
**RECEIVED**  
NOV 15 2004

Wellhead protection area: (Less than 200 feet from a private domestic water source, or less than 1000 feet from all other water sources.)

Yes  
No

(20 points)  
( 0 points)X  
**OUT-ARTESIA**

Distance to surface water: (horizontal distance to all wetlands, playas, irrigation canals, ditches, and perennial and ephemeral watercourses.)

Less than 200 feet  
200 feet or more, but less than 1000 feet  
1000 feet or more

(20 points)  
(10 points)  
( 0 points)X

**Ranking Score (Total Points)**

0 points

**If this is a pit closure:** (1) attach a diagram of the facility showing the pit's relationship to other equipment and tanks. (2) Indicate disposal location: (check the onsite box if you are burying in place) onsite X offsite If offsite, name of facility (3) Attach a general description of remedial action taken including remediation start date and end date. (4) Groundwater encountered: No ☐ Yes ☐ If yes, show depth below ground surface ft. and attach sample results. (5) Attach soil sample results and a diagram of sample locations and excavations.

Additional Comments: Closure work plan for Drill pits constructed before April 15, 2004. Plan to deep bury pits contents with 3' of top soil and Mud seed in the proper seed mixture. Reclamation photos will be on file at Yates Petroleum Corporation. The Oil Conservation Division Will be notified 48 hours before pit closure actions began.

Any new pit will  
require a permit as  
per Rule 50

I hereby certify that the information above is true and complete to the best of my knowledge and belief. I further certify that the above-described pit or below-grade tank has been/will be constructed or closed according to NMOCD guidelines ☐, a general permit X, or an (attached) alternative OCD-approved plan ☐.

Date: 11/11/2004

Printed Name/Title Mike Stubblefield Reclamation Agent

Signature *Mike Stubblefield*

Your certification and NMOCD approval of this application/closure does not relieve the operator of liability should the contents of the pit or tank contaminate ground water or otherwise endanger public health or the environment. Nor does it relieve the operator of its responsibility for compliance with any other federal, state, or local laws and/or regulations.

Approval:

Printed Name/Title

Signature

Date:



**ROAD CLASSIFICATION**

Primary highway, hard surface ——— Light-duty road, hard or improved surface ———

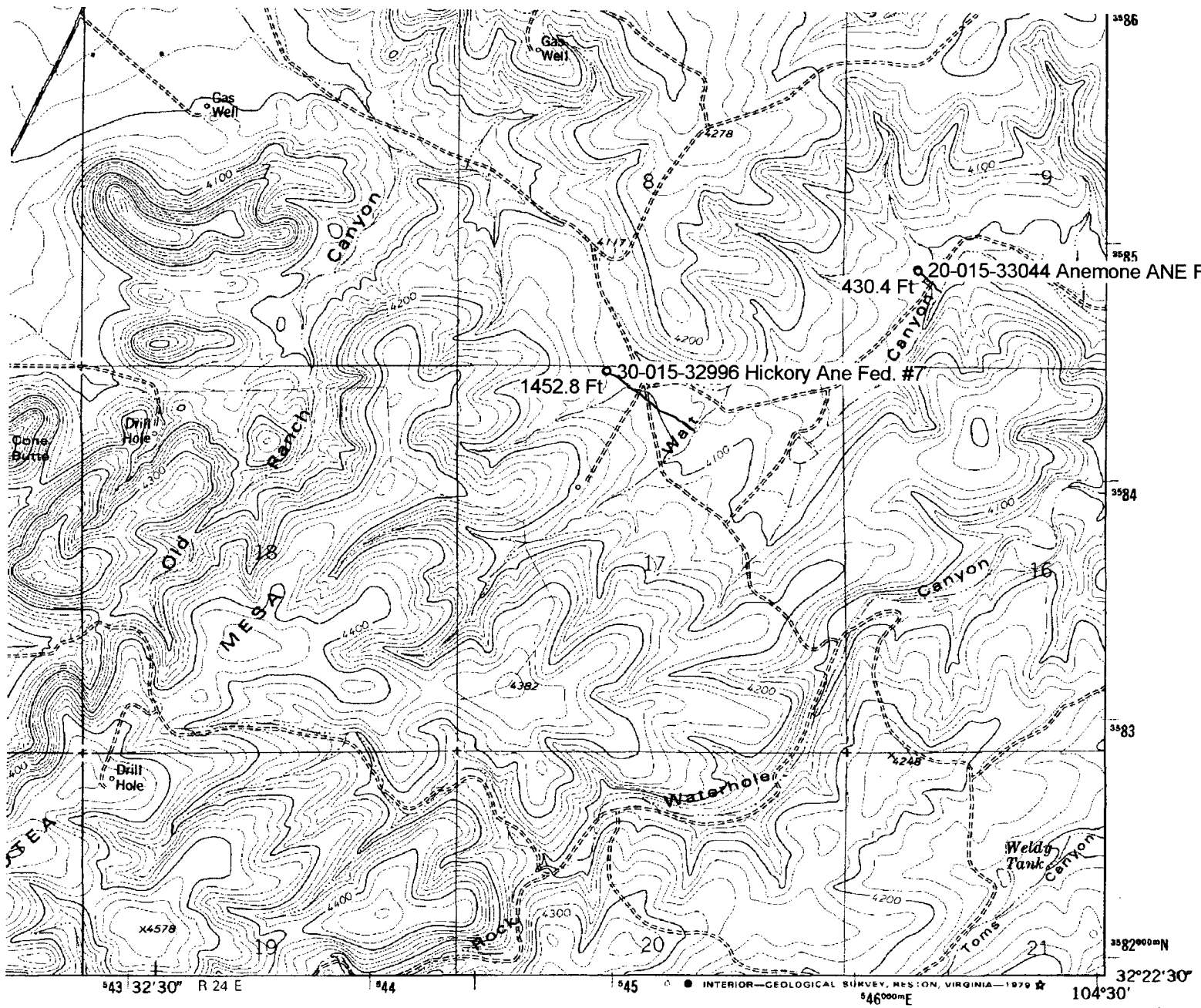
Secondary highway, hard surface ——— Unimproved road ———

○ Interstate Route ○ U. S. Route ○ State Route

**MARTHA CREEK, N. MEX.**  
 NE/4 BANDANNA POINT 15' QUADRANGLE  
 N3222.5—W10430/7.5  
 1978  
 AMS 5048 I NE—SERIES V881



GINIA 22092  
 EST



1 MILE  
EET



RGINIA 22092  
EST

### ROAD CLASSIFICATION

- |                                    |  |
|------------------------------------|--|
| Primary highway,<br>hard surface   | Light-duty road, hard or<br>improved surface |
| Secondary highway,<br>hard surface | Unimproved road                              |
- Interstate Route  
 U. S. Route  
 State Route

### MARTHA CREEK, N. MEX.

NE/4 BANDANNA POINT 15' QUADRANGLE  
N3222.5—W10430/7.5

1978

AMS 5048 I NE—SERIES V881