

DISTRICT I
1085 E. French Dr., Hobbs, NM 88240

DISTRICT II
511 South First, Artesia, NM 88210

DISTRICT III
1000 Rio Brazos Rd., Aztec, NM 87410

DISTRICT IV
2040 South Pacheco, Santa Fe, NM 87505

State of New Mexico
Energy, Minerals and Natural Resources Department

Revised March 17, 19
Instruction on how
Submit to Appropriate District Office
State Lease - 4 Copies
Fee Lease - 3 Copies

OIL CONSERVATION DIVISION
P.O. Box 2088
Santa Fe, New Mexico 87504-2088

☐ AMENDED REPORT

WELL LOCATION AND ACREAGE DEDICATION PLAT

API Number	Pool Code 97418	Pool Name Sand Draw; Abo
Property Code	Property Name FOOTBALL "BCF" FEDERAL	Well Number 1
OSHD No. 025575	Operator Name YATES PETROLEUM CORPORATION	Elevation 3719

Surface Location

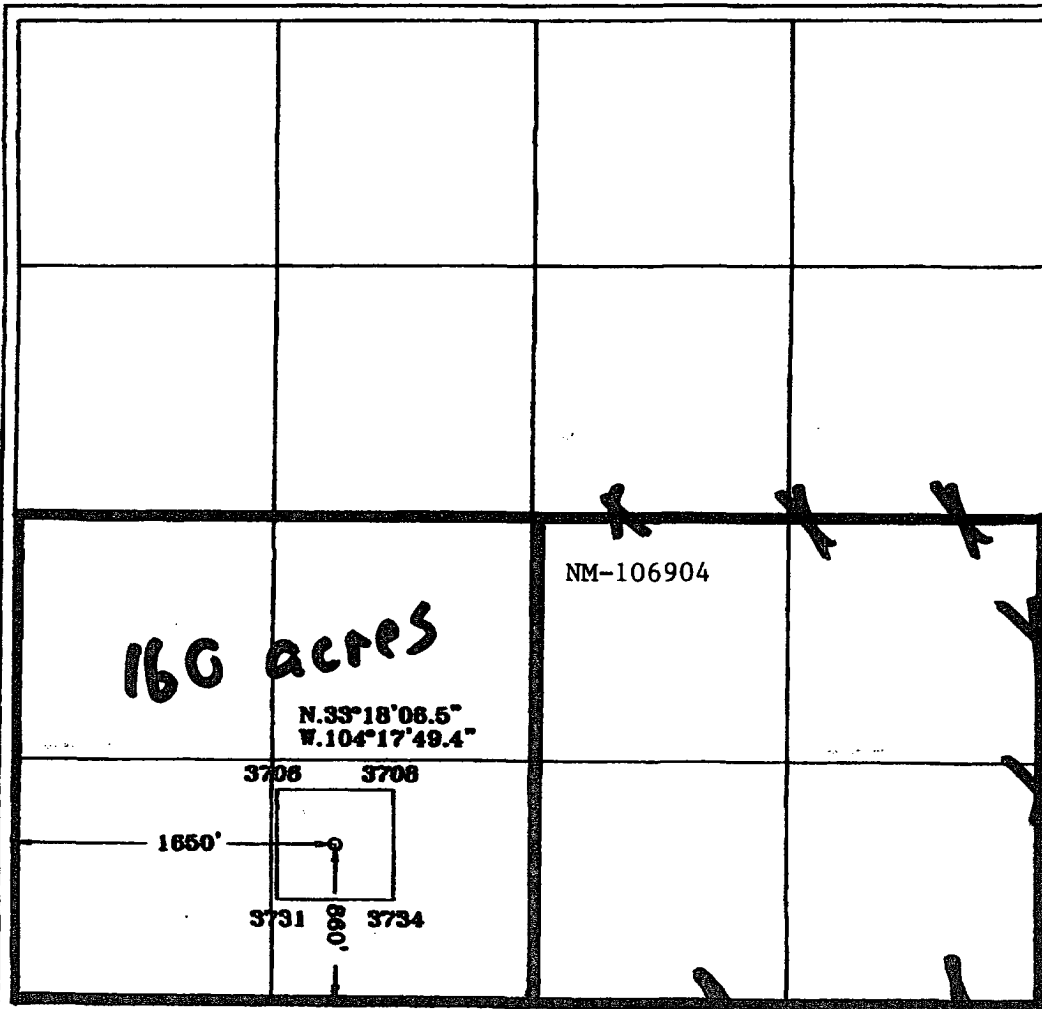
UL or lot No.	Section	Township	Range	Lot 1/4	Feet from the	North/South line	Feet from the	East/West line	County
N	1	12S	26E		860	SOUTH	1650	WEST	CHAVE

Bottom Hole Location if Different From Surface

UL or lot No.	Section	Township	Range	Lot 1/4	Feet from the	North/South line	Feet from the	East/West line	County

Dedicated Acres 160	Joint or Infill	Consolidation Code	Order No.
------------------------	-----------------	--------------------	-----------

NO ALLOWABLE WILL BE ASSIGNED TO THIS COMPLETION UNTIL ALL INTERESTS HAVE BEEN CONSOLIDATED
OR A NON-STANDARD UNIT HAS BEEN APPROVED BY THE DIVISION



OPERATOR CERTIFICATION

I hereby certify that the information contained herein is true and complete to the best of my knowledge and belief.

Clifton R. May
Signature

Clifton R. May
Printed Name

Regulatory Agent
Title

July 11, 2003
Date

SURVEYOR CERTIFICATION

I hereby certify that the well location shown on this plat was plotted from field notes of actual surveys made by me or under my supervision, and that the same is true and correct to the best of my belief.

6/24/2003

Date Surveyed

Signature of Registered Professional Surveyor
[Signature]
Herschel Jones
NEW MEXICO
3640
Certificate No. Herschel Jones RLS 36
GENERAL SURVEYING COMPANY