

UNITED STATES
DEPARTMENT OF THE INTERIOR
BUREAU OF LAND MANAGEMENT

APPLICATION FOR PERMIT TO DRILL OR REENTER

1a. Type of Work: <input checked="" type="checkbox"/> DRILL <input type="checkbox"/> REENTER		5. Lease Serial No. NMLC029395A
1b. Type of Well: <input checked="" type="checkbox"/> Oil Well <input type="checkbox"/> Gas Well <input type="checkbox"/> Other <input checked="" type="checkbox"/> Single Zone <input type="checkbox"/> Multiple Zone		6. If Indian, Allottee or Tribe Name
2. Name of Operator MARBOB ENERGY CORPORATION		7. If Unit or CA Agreement, Name and No. 27629
Contact: DIANA CANNON E-Mail: production@marbob.com		8. Lease Name and Well No. TONY FEDERAL 27
3a. Address P O BOX 227 ARTESIA, NM 88211-0227	3b. Phone No. (include area code) Ph: 505.748.3303 Fx: 505.746.2523	9. API Well No. 30-015-32753
4. Location of Well (Report location clearly and in accordance with any State requirements) At surface SENE Lot H 1650FNL 990FEL At proposed prod. zone SENE Lot H 1650FNL 990FEL		10. Field and Pool, or Exploratory CEDAR LAKE YESO
14. Distance in miles and direction from nearest town or post office* SEE SURFACE USE PLAN		11. Sec., T., R., M., or Bk. and Survey or Area Sec 19 T17S R31E Mer NMP
15. Distance from proposed location to nearest property or lease line, ft. (Also to nearest drig. unit line, if any) 990'	16. No. of Acres in Lease 609.43	12. County or Parish EDDY
18. Distance from proposed location to nearest well, drilling, completed, applied for, on this lease, ft.	19. Proposed Depth 6000 MD	13. State NM
21. Elevations (Show whether DF, KB, RT, GL, etc.) 3634 GL	22. Approximate date work will start 04/01/2003	17. Spacing Unit dedicated to this well 40.00
		20. BLM/BIA Bond No. on file
		23. Estimated duration

24. Attachments **Kerwell Controlled Water Basin**

The following, completed in accordance with the requirements of Onshore Oil and Gas Order No. 1, shall be attached to this form:

- | | |
|---|--|
| 1. Well plat certified by a registered surveyor. | 4. Bond to cover the operations unless covered by an existing bond on file (see Item 20 above). |
| 2. A Drilling Plan. | 5. Operator certification |
| 3. A Surface Use Plan (if the location is on National Forest System Lands, the SUPO shall be filed with the appropriate Forest Service Office). | 6. Such other site specific information and/or plans as may be required by the authorized officer. |

25. Signature (Electronic Submission)	Name (Printed/Typed) DIANA CANNON	Date 02/27/2003
Title AUTHORIZED REPRESENTATIVE		
Approved by (Signature) /s/ LESLIE A. THEISS	Name (Printed/Typed) /s/ LESLIE A. THEISS	Date APR 18 2003
Title FIELD MANAGER	Office CARLSBAD FIELD OFFICE	

Application approval does not warrant or certify the applicant holds legal or equitable title to those rights in the subject lease which would entitle the applicant to conduct operations thereon.
Conditions of approval, if any, are attached.

APPROVAL FOR 1 YEAR

Title 18 U.S.C. Section 1001 and Title 43 U.S.C. Section 1212, make it a crime for any person knowingly and willfully to make to any department or agency of the United States any false, fictitious or fraudulent statements or representations as to any matter within its jurisdiction.

Additional Operator Remarks (see next page)

APPROVAL SUBJECT TO Electronic Submission #18998 verified by the BLM Well Information System
GENERAL REQUIREMENTS AND For MARBOB ENERGY CORPORATION, sent to the Carlsbad
SPECIAL STIPULATIONS AFMSS for processing by Linda Askwig on 02/27/2003 (03LA0343AE)
ATTACHED

Additional Operator Remarks:

17 1/2" HOLE, 13 3/8" J55 48# CSG SET @ 350', CMT W/ 350 SX TO SURF.
12 1/4" HOLE, 8 5/8" J55 24# CSG SET @ 1300', CMT W/ 550 SX TO SURF.
7 7/8" HOLE, 5 1/2" J55 17# CSG SET @ 6000', CMT SUFFICIENT TO COVER 200' ABOVE ALL KNOWN OIL & GAS HORIZONS.

PRESSURE CONTROL EQUIPMENT: WE WILL BE USING A 2M SYSTEM - SEE EXHIBIT #1 (4 PGS).

PAY ZONE WILL BE SELECTIVELY STIMULATED AND PERFORATED AS NEEDED FOR OPTIMUM PRODUCTION.

ATTACHMENT INCLUDES:

1. WELL LOCATION AND ACREAGE DEDICATION PLAT
2. DRILLING PROGRAM
3. SURFACE USE AND OPERATING PLAN
4. HYDROGEN SULFIDE DRILLING OPERATIONS PLAN
5. ADDITIONAL REQUIRED INFORMATION (EXHIBITS #1 (4 PGS) - #4)

JAN 09 2003

DISTRICT I

P.O. Box 1888, Hobbs, NM 88241-1888

State of New Mexico

Energy, Minerals and Natural Resources Department

Form C-102

Revised February 10, 1994

Submit to Appropriate District Office

State Lease - 4 Copies

Fee Lease - 3 Copies

DISTRICT II

P.O. Drawer DD, Artesia, NM 88211-0719

OIL CONSERVATION DIVISION

P.O. Box 2088

Santa Fe, New Mexico 87504-2088

DISTRICT III

1030 Rio Brazos Rd., Aztec, NM 87410

DISTRICT IV

P.O. Box 2088, Santa Fe, N.M. 87504-2088

WELL LOCATION AND ACREAGE DEDICATION PLAT

☐ AMENDED REPORT

API Number 30-015-	Pool Code 96831	Pool Name CEDAR LAKE; YESO
Property Code 23629	Property Name TONY FEDERAL	Well Number 27
OGRID No. 14049	Operator Name MARBOB ENERGY CORPORATION	Elevation 3634'

Surface Location

UL or lot No.	Section	Township	Range	Lot Idn	Feet from the	North/South line	Feet from the	East/West line	County
H	19	17-S	31-E		1650	NORTH	990	EAST	EDDY

Bottom Hole Location If Different From Surface

UL or lot No.	Section	Township	Range	Lot Idn	Feet from the	North/South line	Feet from the	East/West line	County

Dedicated Acres	Joint or Infill	Consolidation Code	Order No.
40			

NO ALLOWABLE WILL BE ASSIGNED TO THIS COMPLETION UNTIL ALL INTERESTS HAVE BEEN CONSOLIDATED
OR A NON-STANDARD UNIT HAS BEEN APPROVED BY THE DIVISION

	OPERATOR CERTIFICATION I hereby certify the the information contained herein is true and complete to the best of my knowledge and belief. Signature DIANA J. CANNON Printed Name PRODUCTION ANALYST Title FEBRUARY 27, 2003 Date
	SURVEYOR CERTIFICATION I hereby certify that the well location shown on this plat was plotted from field notes of actual surveys made by me or under my supervision and that the same is true and correct to the best of my belief. JANUARY 7, 2003 Date Surveyed Signature & Seal of Professional Surveyor
	Certificate No. RONALD J. EDSON 3239 GARY EDSON 12641

MARBOB ENERGY CORPORATION

HYDROGEN SULFIDE DRILLING OPERATIONS PLAN

I. HYDROGEN SULFIDE TRAINING

All personnel, whether regularly assigned, contracted, or employed on an unscheduled basis, will receive training from a qualified instructor in the following areas prior to commencing drilling operations on this well:

- A. The hazards and characteristics of hydrogen sulfide (H₂S).
- B. The proper use and maintenance of personal protective equipment and life support systems.
- C. The proper use of H₂S detectors, alarms, warning systems, briefing areas, evacuation procedures, and prevailing winds.
- D. The proper techniques for first aid and rescue procedures.

In addition, supervisory personnel will be trained in the following areas:

- A. The effects of H₂S on metal components. If high tensile tubulars are to be used, personnel will be trained in their special maintenance requirements.
- B. Corrective action and shut-in procedures when drilling or reworking a well and blowout prevention and well control procedures.
- C. The contents and requirements of the H₂S Drilling Operations Plan and the Public Protection Plan.

There will be an initial training session just prior to encountering a known or probable H₂S zone (within 3 days or 500 feet) and weekly H₂S and well control drills for all personnel in each crew. The initial training session shall include a review of the site specific H₂S Drilling Operations Plan and the Public Protection Plan. This plan shall be available at the well site. All personnel will be required to carry documentation that they have received the proper training.

II. H₂S SAFETY EQUIPMENT AND SYSTEMS

Note: All H₂S safety equipment and systems will be installed, tested, and operational when drilling reaches a depth of 500 feet above, or three days prior to penetrating the first zone containing or reasonably expected to contain H₂S.

A. Well Control Equipment:

Flare line.

Choke manifold.

Blind rams and pipe rams to accommodate all pipe sizes with properly sized closing unit.

Auxiliary equipment to include: annular preventer, mud-gas separator, rotating head.

B. Protective equipment for essential personnel:

Mark II Surviveair 30-minute units located in the dog house and at briefing areas.

C. H₂S detection and monitoring equipment:

2 - portable H₂S monitor positioned on location for best coverage and response. These units have warning lights and audible sirens when H₂S levels of 20 ppm are reached.

D. Visual warning systems:

Caution/Danger signs shall be posted on roads providing direct access to location. Signs will be painted a high visibility yellow with black lettering of sufficient size to be readable at a reasonable distance from the immediate location. Bilingual signs will be used, when appropriate. See example attached.

E. Mud Program:

The mud program has been designed to minimize the volume of H₂S circulated to the surface.

A mud-gas separator will be utilized.

F. Metallurgy:

All drill strings, casings, tubing, wellhead, blowout preventers, drilling spool, kill lines, choke manifold and lines, and valves shall be suitable for H₂S service.

G. Communication:

Company vehicles equipped with cellular telephone and 2-way radio.

W A R N I N G

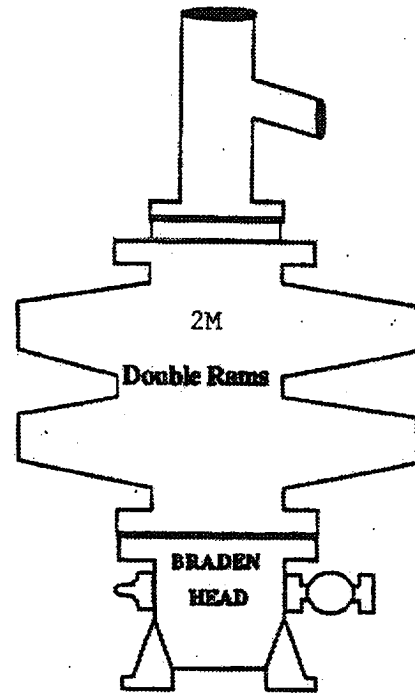
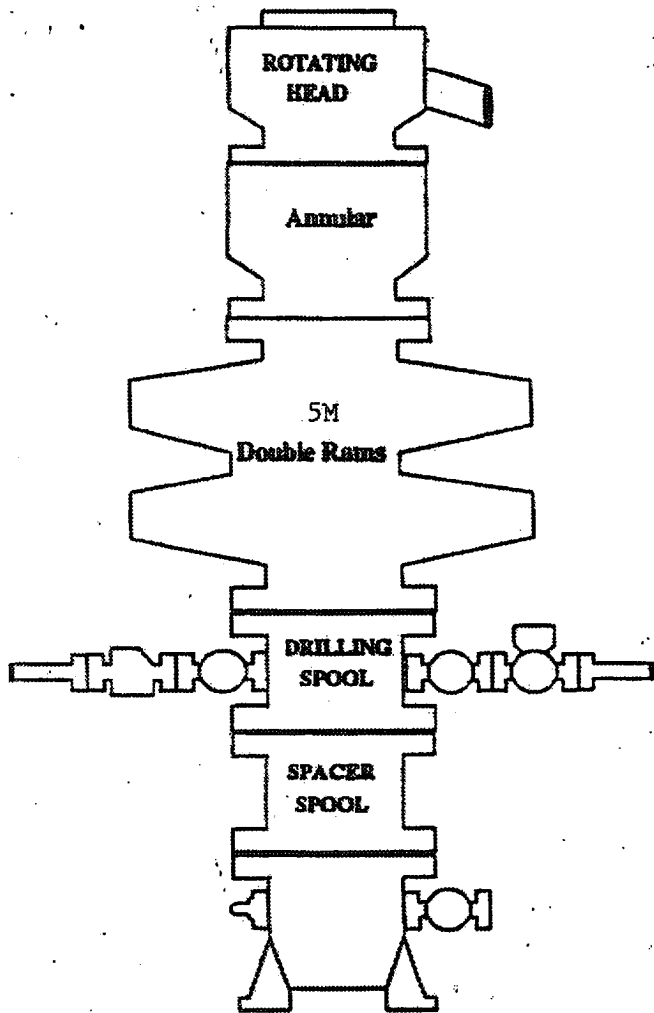
**YOU ARE ENTERING AN H₂S AREA
AUTHORIZED PERSONNEL ONLY**

- 1. BEARDS OR CONTACT LENSES NOT ALLOWED**
- 2. HARD HATS REQUIRED**
- 3. SMOKING IN DESIGNATED AREAS ONLY**
- 4. BE WIND CONSCIOUS AT ALL TIMES**
- 5. CK WITH MARBOB FOREMAN AT MAIN OFFICE**

MARBOB ENERGY CORPORATION

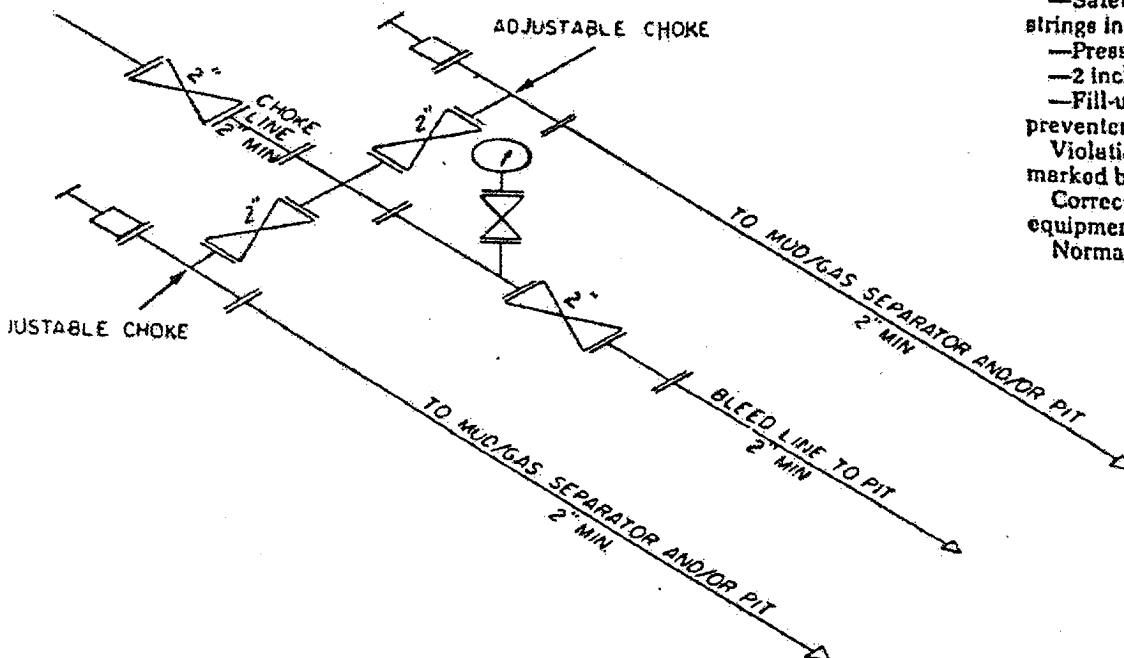
1-505-748-3303

BOPE SCHEMATIC



ONSHORE OIL AND GAS ORDER NO. 2

- 2M system:
- Annular preventer, or. double ram, or two rams with one being blind and one being a pipe ram *
 - Kill line (2 inch minimum)
 - 1 kill line valve (2 inch minimum)
 - 1 choke line valve
 - 2 chokes (refer to diagram in Attachment 1)
 - Upper kelly cock valve with handle available
 - Safety valve and subs to fit all drill strings in use
 - Pressure gauge on choke manifold
 - 2 inch minimum choke line
 - Fill-up line above the uppermost preventer.
- Violation: Minor (all items unless marked by asterisk).
 Corrective Action: Install the equipment as specified.
 Normal Abatement Period: 24 hours.



2M CHOKE MANIFOLD EQUIPMENT — CONFIGURATION OF CHOKES

MAY VARY

Exhibit One