

DISTRICT I  
1625 N FRENCH DR., HOBBS, NM 88240

State of New Mexico  
Energy, Minerals and Natural Resources Department

Form C-102

DISTRICT II  
1301 W GRAND AVENUE, ARTESIA, NM 88210

OIL CONSERVATION DIVISION  
12310 SOUTH ST. FRANCIS DR.  
Santa Fe, New Mexico 87505

Revised October 12, 2005  
Submit to Appropriate District Office  
State Lease - 4 Copies  
Fee Lease - 3 Copies

DISTRICT III  
1000 RIO BRAZOS RD., AZTEC, NM 87410

DISTRICT IV  
12310 S ST. FRANCIS DR., SANTA FE, NM 87505

WELL LOCATION AND ACREAGE DEDICATION PLAT

☐ AMENDED REPORT

API Number 30-015- <b>39120</b>	Pool Code 96831	Pool Name CEDAR LAKE; GLORIETA-YESO
Property Code 308142 ✓	Property Name FOSTER EDDY ✓	Well Number 20 ✓
OGRID No. 229137 ✓	Operator Name COG OPERATING, LLC	Elevation 3728'

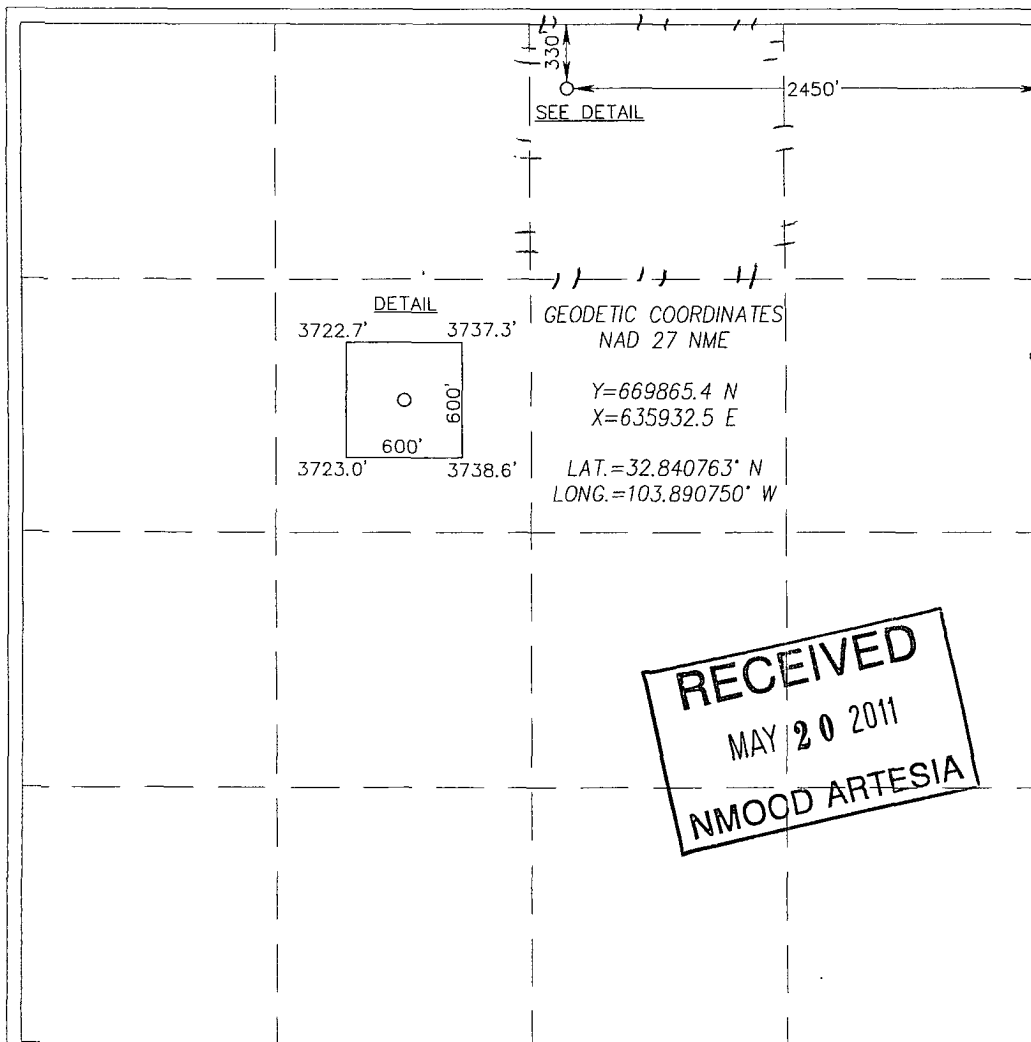
Surface Location

UL or lot No. B	Section 17	Township 17-S	Range 31-E	Lot Idn	Feet from the 330	North/South line NORTH	Feet from the 2450	East/West line EAST	County EDDY ✓
--------------------	---------------	------------------	---------------	---------	----------------------	---------------------------	-----------------------	------------------------	------------------

Bottom Hole Location If Different From Surface

UL or lot No.	Section	Township	Range	Lot Idn	Feet from the	North/South line	Feet from the	East/West line	County
Dedicated Acres 40	Joint or Infill	Consolidation Code	Order No.						

NO ALLOWABLE WILL BE ASSIGNED TO THIS COMPLETION UNTIL ALL INTERESTS HAVE BEEN CONSOLIDATED  
OR A NON-STANDARD UNIT HAS BEEN APPROVED BY THE DIVISION



RECEIVED  
MAY 20 2011  
NMOOD ARTESIA

OPERATOR CERTIFICATION

I hereby certify that the information herein is true and complete to the best of my knowledge and belief, and that this organization either owns a working interest or unleased mineral interest in the land including the proposed bottom hole location or has a right to drill this well at this location pursuant to a contract with an owner of such mineral or working interest, or to a voluntary pooling agreement or a compulsory pooling order heretofore entered by the division.

*Robyn Odom* 4/1/2011  
Signature Date  
Robyn Odom  
Printed Name

SURVEYOR CERTIFICATION

I hereby certify that the well location shown on this plat was plotted from field notes of actual surveys made by me or under my supervision, and that the same is true and correct to the best of my belief.

MARCH 18, 2011

Date Surveyed  
Signature & Seal of Professional Surveyor  
Professional Surveyor  
Certificate No. GARY CEDISON 12641  
ROYAL CEDISON 3239