

Surface Use & Operating Plan

Puckett 24 #37

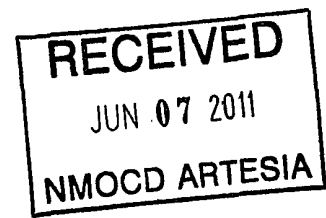
- Surface Tenant: Olane Caswell, 1702 Gillham, Brownfield, TX 79316
- New Road: approx. 90'
- Flow Line: approx. 0.65 miles
- Facilities: Puckett 24 Tank Battery

Well Site Information

V Door: West

Topsoil: South

Interim Reclamation: South/East



Notes

-Proposed Access Road (Section A) may apply

Onsite: 1/25/2011

Curtis Griffin (COG), Tanner Nygrene (BLM), Chris Moon (GOG), Gary Box (JWS)

SURFACE USE AND OPERATING PLAN

1. Existing & Proposed Access Roads

- A. The well site survey and elevation plat for the proposed well is shown in Exhibit #1. It was staked by John West Engineering, Hobbs, NM.
- B. All roads to the location are shown in the topographic map Exhibit #2. The existing lease roads are illustrated and are adequate for travel during drilling and production operations. Upgrading existing roads prior to drilling the well will be done where necessary.
- C. Directions to location: From the intersection US Highway 82 and Co. Rd. 224 (Ripple Road), go southeast on Co. Rd. #224 approx. 0.4 miles. Turn right and go southwest approx. 0.3 miles. Turn right and go northwest approx. 0.3 miles. Turn left and go south approx. 0.3 miles. This location stake is approx. 250 feet west of lease road. See Vicinity Map, Exhibit #3
- D. Routine grading and maintenance of existing roads will be conducted as necessary to maintain their condition as long as any operations continue on this lease. Roads will be maintained according to specifications in section 2A of this Surface Use and Operating Plan.

2. Proposed Access Road:

Exhibit #4 shows that 90' of new access road will be required for this location. If any road is required it will be constructed as follows:

- A. The maximum width of the running surface will be 14'. The road will be crowned, ditched and constructed of 6" rolled and compacted caliche. Ditches will be at 3:1 slope and 4 feet wide. Water will be diverted where necessary to avoid ponding, prevent erosion, maintain good drainage, and to be consistent with local drainage patterns. If existing road conditions do not meet the above stated qualifications, upgrades will be constructed to meet these standards on all existing or non-existing lease roads.
- B. The average grade will be less than 1%.
- C. No turnouts are planned.
- D. No culverts, cattleguard, gates, low water crossings or fence cuts are necessary.

- E. Surfacing material will consist of native caliche. Caliche will be obtained from the actual well site if available. If not available onsite, caliche will be hauled from the nearest BLM caliche pit.

3. Location of Existing Well:

Exhibit #5 shows all existing wells within a one-mile radius of this well.

As shown on this plat there are numerous wells producing from the San Andres and Yeso formations.

4. Location of Existing and/or Proposed Facilities:

- A. COG Operating LLC does operate a production facility on this lease.
- B. If the well is productive, contemplated facilities will be as follows:
 - 1) Production will be sent to the Puckett 24 Tank battery located in Section 24 at the Puckett 24 #38 well location. The facility location is shown in Exhibit #5.
 - 2) The tank battery and facilities including all flow lines and piping will be installed according to API specifications.
 - 3) Any additional caliche will be obtained from the actual well site. If caliche does not exist or is not plentiful from the well site, the caliche will be hauled from a BLM approved caliche pit. Any additional construction materials will be purchased from contractors.
 - 4) Proposed flow lines, will follow an archaeologically approved route to the Puckett 24 Tank battery located in Section 24 at the Puckett 24 #38 well location. The flowline will be SDR 7 3" poly line laid on the surface and will be approximately 0.65 miles in length.
 - 5) It will be necessary to run electric power if this well is productive. Power will be provided by CVE and they will submit a separate plan and ROW for service to the well location.
 - 6) If the well is productive, rehabilitation plans will include the following:
 - a) The original topsoil from the well site will be returned to the location, and the site will be re-contoured as close as possible to the original site.

5. Location and Type of Water Supply:

The well will be drilled with combination brine and fresh water mud system as outlined in the drilling program. The water will be obtained from commercial water stations in the area and hauled to location by transport truck over the existing and proposed access roads shown in Exhibit #2. If a

commercial fresh water source is nearby, fast line may be laid along existing road ROW's and fresh water pumped to the well. No water well will be drilled on the location.

6. Source of Construction Materials and Location "Turn-Over" Procedure:

Obtaining caliche: The primary way of obtaining caliche to build locations and roads will be by "turning over" the location. This means, caliche will be obtained from the actual well sight. A caliche permit will be obtained from BLM prior to pushing up any caliche. 2400 cu. Yards is max amount of caliche needed for pad and roads. Amount will vary for each pad. The procedure below has been approved by BLM personnel:

- A. The top 6 inches of topsoil is pushed off and stockpiled along the side of the location.**
- B. An approximate 120' X 120' area is used within the proposed well site to remove caliche.**
- C. Subsoil is removed and piled alongside the 120' by 120' area within the pad site.**
- D. When caliche is found, material will be stock piled within the pad site to build the location and road.**
- E. Then subsoil is pushed back in the hole and caliche is spread accordingly across entire location and road.**
- F. Once well is drilled, the stock piled top soil will be used for interim reclamation and spread along areas where caliche is picked up and the location size is reduced. Neither caliche or subsoil will be stock piled outside of the well pad. Topsoil will be stockpiled along the edge of the pad as depicted in attached plat.**

In the event that no caliche is found onsite, caliche will be hauled in from a BLM approved caliche pit.

7. Methods of Handling Water Disposal:

- A. The well will be drilled utilizing a closed loop mud system. Drill cuttings will be held in roll-off style mud boxes and taken to an NMOCD approved disposal site.**
- B. Drilling fluids will be contained in steel mud pits.**
- C. Water produced from the well during completion will be held temporarily in steel tanks and then taken to an NMOCD approved commercial disposal facility.**
- D. Garbage and trash produced during drilling or completion operations will be collected in a trash bin and hauled to an approved landfill. No toxic waste or hazardous chemicals will be produced by this operation.**

- E. After the rig is moved out and the well is either completed or abandoned, all waste materials will be cleaned up within 30 days. In the event of a dry hole only a dry hole marker will remain.

8. Ancillary Facilities:

No airstrip, campsite or other facilities will be built as a result of the operation on this well.

9. Well Site Layout:

- A. The drill pad layout, with elevations staked by John West Engineering, is shown in Exhibit #4. Dimensions of the pad and pits are shown on Exhibit #6. V door direction is West. Topsoil, if available, will be stockpiled per BLM specifications. Because the pad is almost level no major cuts will be required.
- B. Exhibit #6 also shows the proposed orientation of closed loop system and access road. No permanent living facilities are planned, but a temporary foreman/toolpusher's trailer will be on location during the drilling operations.

10. Plans for Restoration of the Surface:

- A. Interim Reclamation will take place after the well has been completed. The pad will be downsized by reclaiming the areas not needed for production operations. The portions of the pad that are not needed for production operations will be re-contoured to its original state as much as possible. The caliche that is removed will be reused to either build another pad site or for road repairs within the lease. The stockpiled topsoil will then be spread out reclaimed area and reseeded with a BLM approved seed mixture. In the event that the well must be worked over or maintained, it may be necessary to drive, park, and/or operate machinery on reclaimed land. This area will be repaired or reclaimed after work is complete.
- B. Final Reclamation: Upon plugging and abandoning the well, All caliche for well pad and lease road will be removed and surface will be recountoured to reflect its surroundings as much as possible. Caliche will be recycled for road repair or reused for another well pad within the lease. If any topsoil remains, it will be spread out and the area will be re-seeded with a BLM approved mixture and re-vegetated as per BLM orders.

11. Surface Ownership:

- A. The surface is owned by the U.S. Government and is administered by the Bureau of Land Management. The surface is multiple uses with the primary uses of the region for grazing of livestock and the production of oil and gas.

- B. The surface tenant for this site is Olane Caswell, 1702 Gillham, Brownfield, TX 79316.
- C. The proposed road routes and surface location will be restored as directed by the BLM

12. Other Information:

- A. The area around the well site is grassland and the topsoil is sandy. The vegetation is moderately sparse with native prairie grasses, some mesquite and shinnery oak. No wildlife was observed but it is likely that mule deer, rabbits, coyotes and rodents traverse the area.
- B. There is no permanent or live water in the immediate area.
- C. There are no dwellings within 2 miles of this location.
- D. If needed, a Cultural Resources Examination is being prepared by Southern New Mexico Archaeological Services, Inc. P.O. Box 1, Bent New Mexico, 88314, phone # 505-671-4797 and the results will be forwarded to your office in the near future. Otherwise, **COG will be participating in the Permian Basin MOA Program.**

13. Bond Coverage:

Bond Coverage is Nationwide Bond # 000215

14. Lessee's and Operator's Representative:

The COG Operating LLC representative responsible for assuring compliance with the surface use plan is as follows:

John Coffman,	Erick Nelson.
Drilling Superintendent	Division Operations Manager
COG Operating LLC	COG Operating LLC
550 W. Texas, Suite 1300	550 W. Texas, Suite 1300
Midland, TX 79701	Midland, TX 79701
Phone (432) 683-7443 (office)	Phone (505) 746-2210 (office)
(432) 631-9762 (cell)	(432) 238-7591 (cell)

*Surface Use Plan
COG Operating, LLC
Puckett 24 #37
895' FNL & 330' FWL
Section 24, T-17-S, R-31-E, UL D
Eddy County, New Mexico*

I hereby certify that I, or persons under my direct supervision, have inspected the drill site and access road proposed herein; that I am familiar with the conditions that presently exist; that I have full knowledge of State and Federal laws applicable to this operation; that the statements made in this APD package are, to the best of my knowledge, true and correct; and that the work associated with the operations proposed herein will be performed in conformity with this APD package and the terms and conditions under which it is approved. I also certify that I, or COG Operating, LLC, am responsible for the operations conducted under this application. These statements are subject to the provisions of 18 U.S.C. 1001 for the filing of false statements. Executed this 25th day of March, 2011.

Signed: Carl Bird

Printed Name: Carl Bird

Position: Drilling Engineer

Address: 550 W. Texas, Suite 1300, Midland, Texas 79701

Telephone: (432) 683-7443

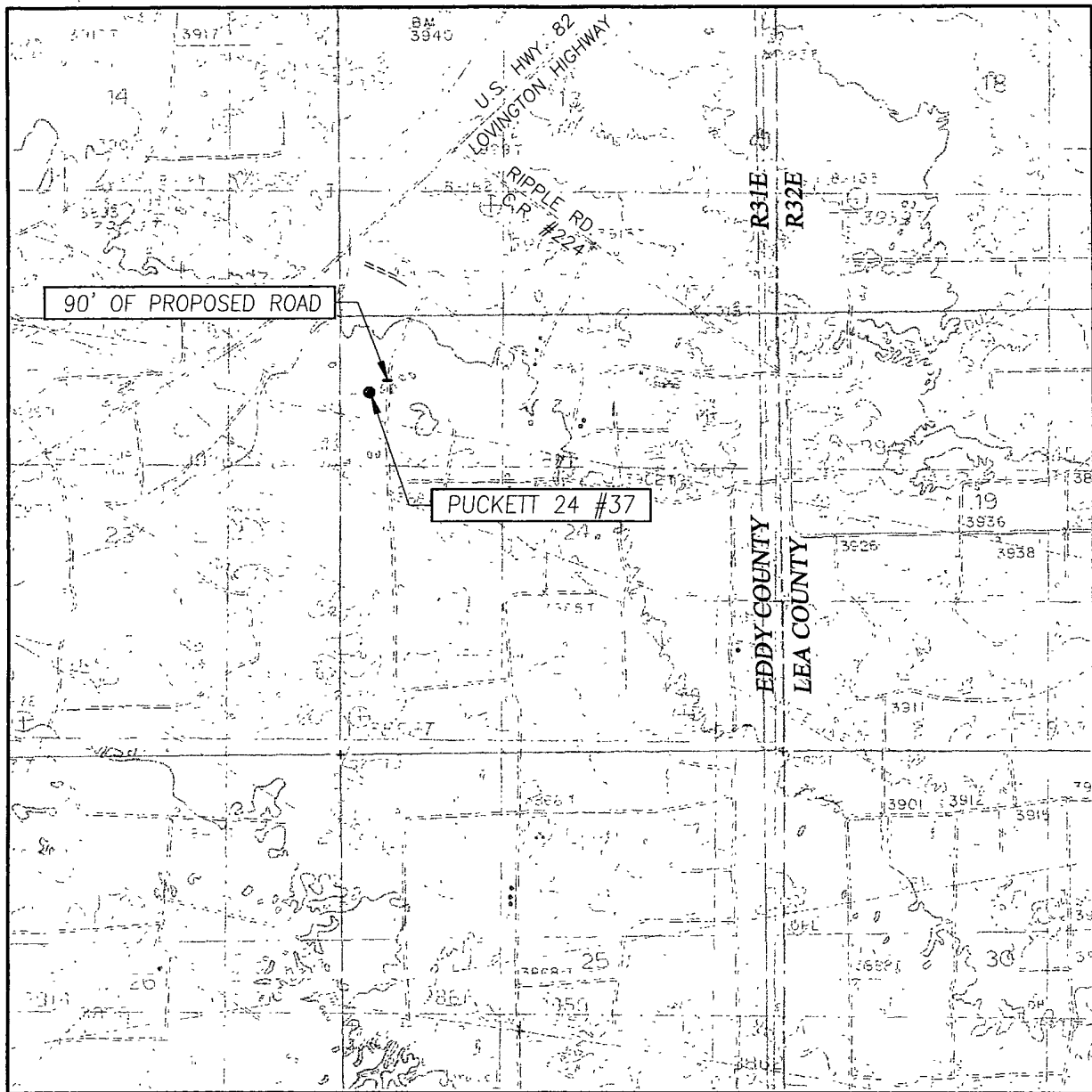
Field Representative (if not above signatory): Same

E-mail: cbird@conchoresources.com

Exhibits:

- Exhibit #1 Wellsite and Elevation Plat**
Form C-102 Well location and acreage dedication plat
- Exhibit #2 Topographic Map (West)**
- Exhibit #3 Vicinity Map and area roads**
- Exhibit #4 Elevation Plat (West)**
- Exhibit #5 Topographic extract showing wells, roads and flowlines**
- Exhibit #6 Pad Layout and orientation**
- Exhibit #7 H2S Signage**
- Exhibit #8 H2S Equipment location**
- Exhibit #9 BOP and Choke diagrams**
- Exhibit #10 Form C-144 NMOCD pit permit application**
- Exhibit #11 1 Mile Radius List and Map showing all wells permitted,
producing and plugged**

LOCATION VERIFICATION MAP



SCALE: 1" = 2000'

CONTOUR INTERVAL:
MALJAMAR, N.M. - 10'

SEC. 24 TWP. 17-S RGE. 31-E

SURVEY N.M.P.M.

COUNTY EDDY STATE NEW MEXICO

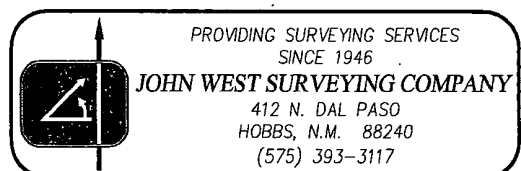
DESCRIPTION 895' FNL & 330' FWL

ELEVATION 3894'

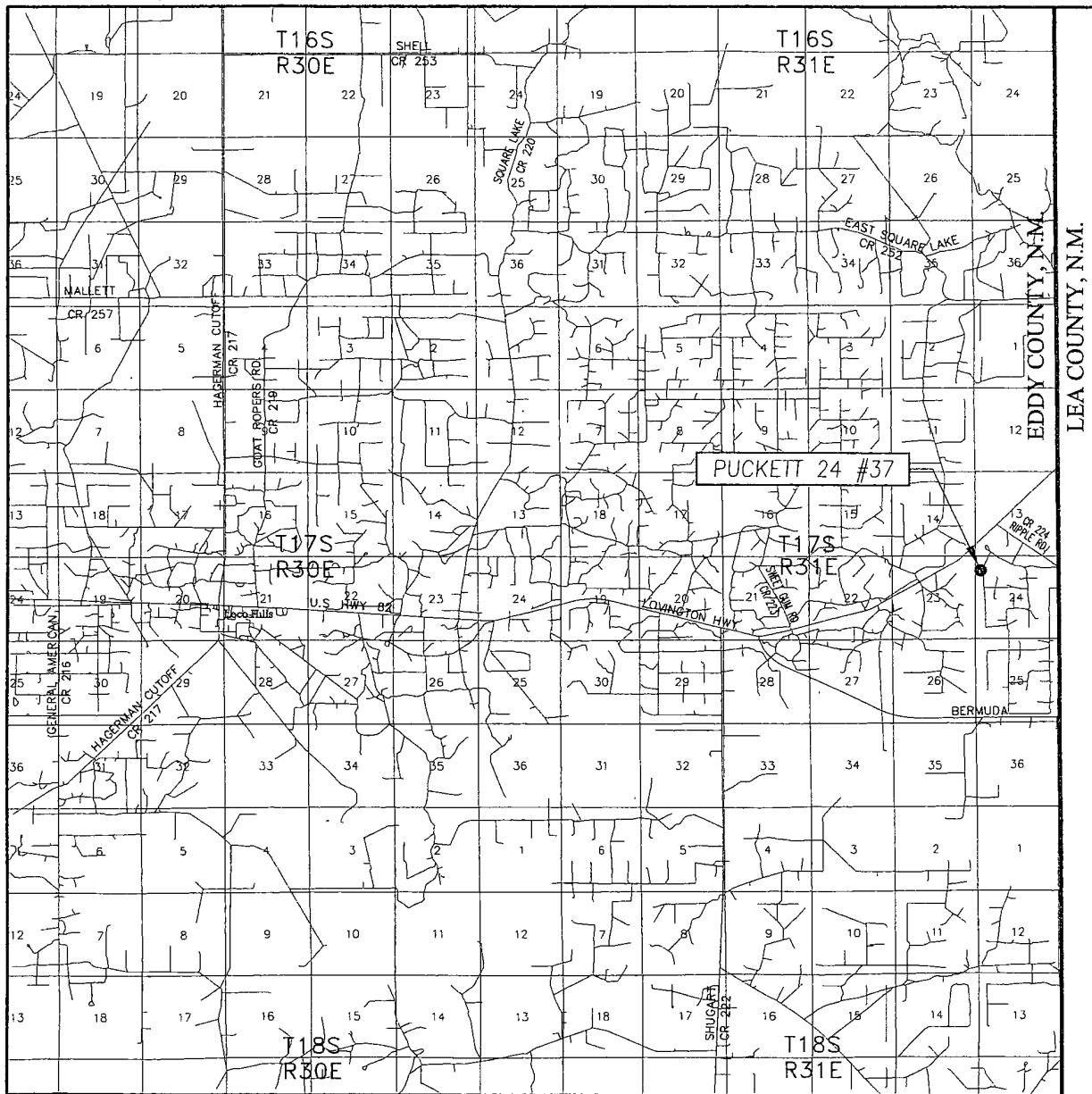
OPERATOR COG OPERATING, INC.

LEASE PUCKETT 24

U.S.G.S. TOPOGRAPHIC MAP
MALJAMAR, N.M.



VICINITY MAP



SCALE: 1" = 2 MILES

SEC. 24 TWP. 17-S RGE. 31-E

SURVEY N.M.P.M.

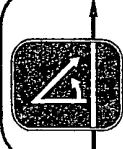
COUNTY EDDY STATE NEW MEXICO

DESCRIPTION 895' FNL & 330' FWL

ELEVATION 3894'

OPERATOR COG OPERATING, LLC

LEASE PUCKETT 24



PROVIDING SURVEYING SERVICES
SINCE 1946

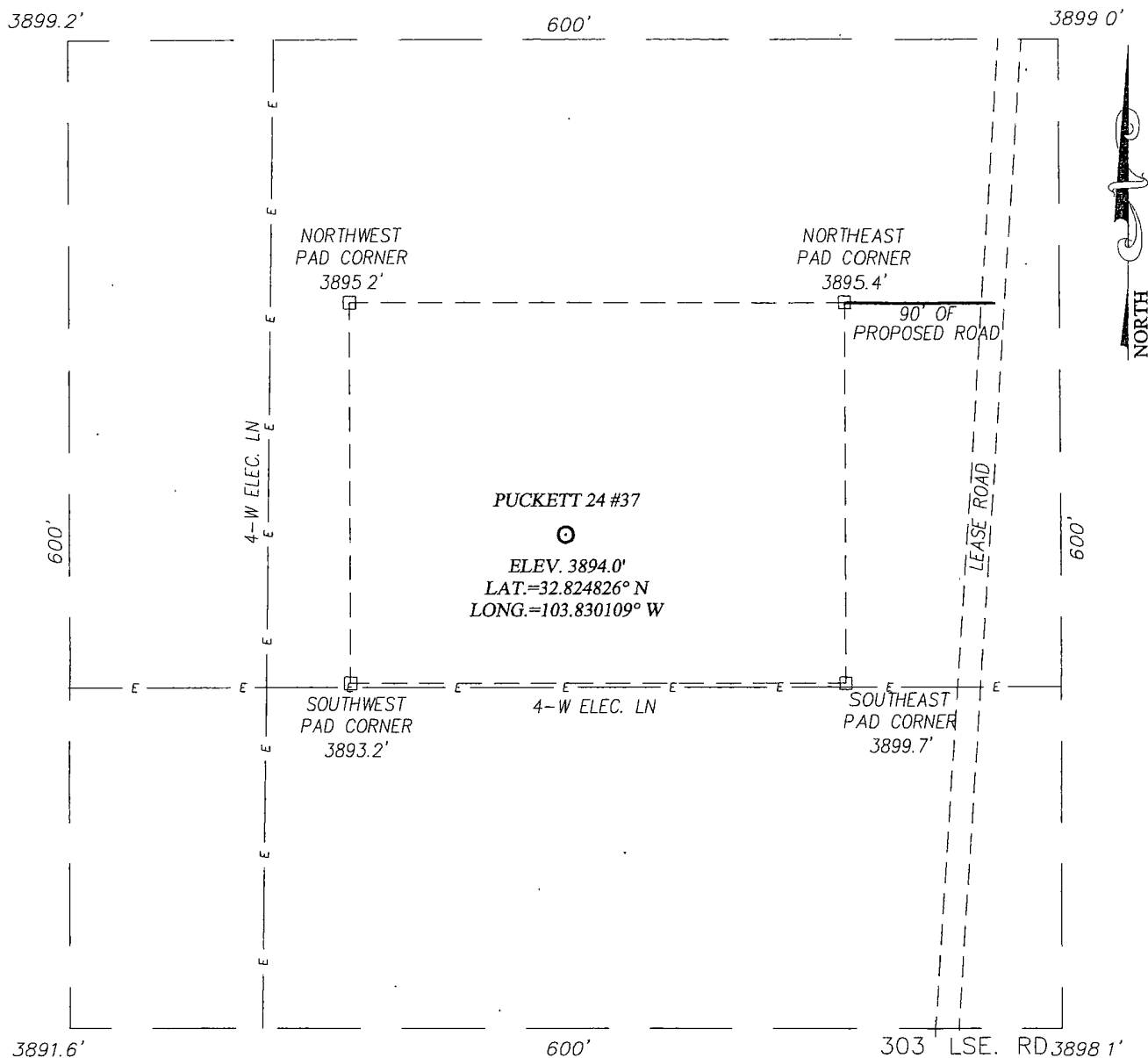
JOHN WEST SURVEYING COMPANY

412 N DAL PASO
HOBBS, N.M. 88240
(575) 393-3117

SECTION 24, TOWNSHIP 17 SOUTH, RANGE 31 EAST, N.M.P.M.

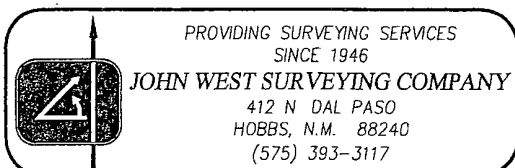
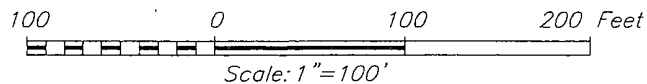
EDDY COUNTY

NEW MEXICO



DIRECTIONS TO LOCATION

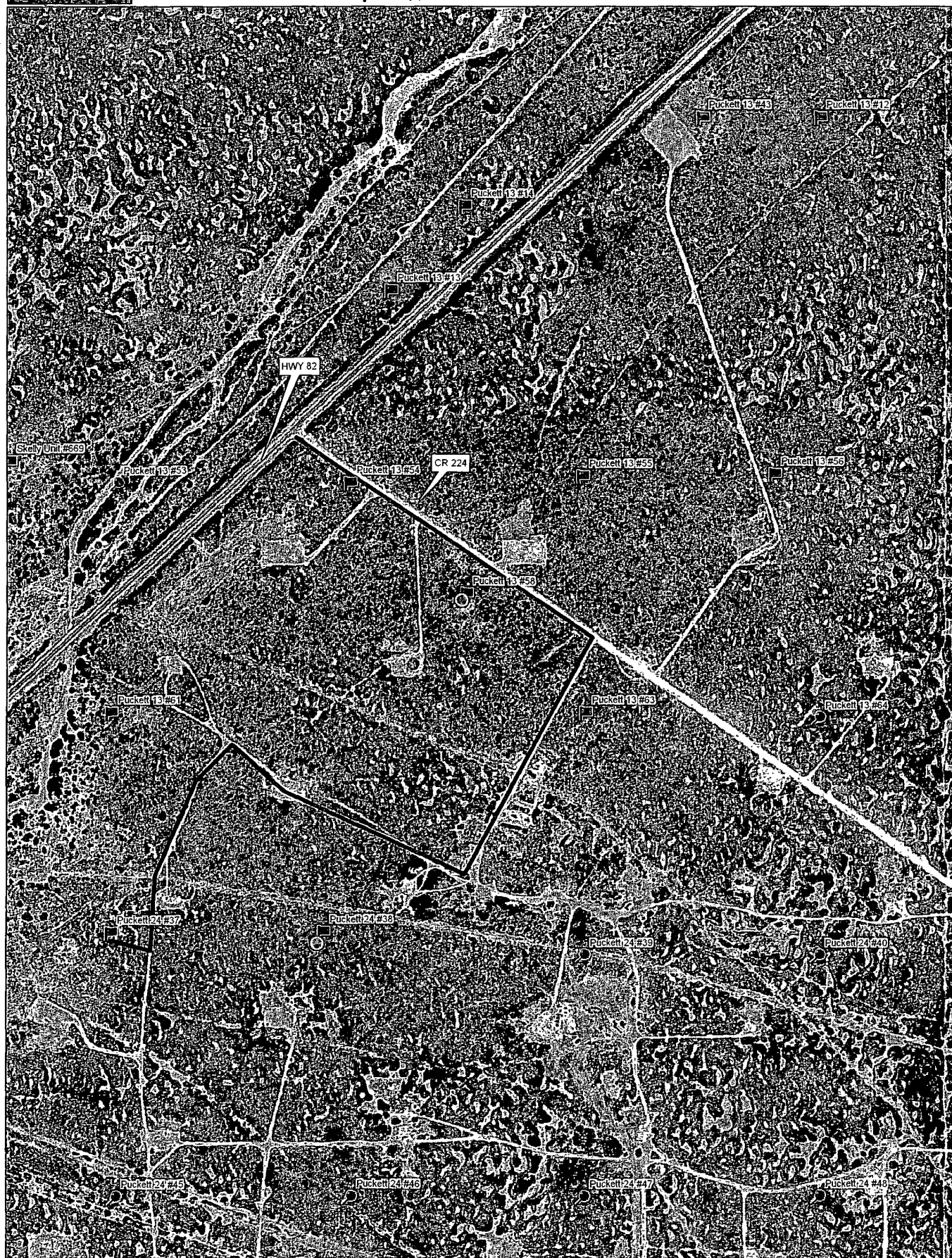
FROM THE INTERSECTION OF U.S. HWY #82 AND CO. RD. 224 (RIPPLE RD.), GO SOUTHEAST ON COR. RD. #224 APPROX. 0.4 MILES. TURN RIGHT AND GO SOUTHWEST APPROX. 0.3 MILES. TURN RIGHT AND GO NORTHWEST APPROX. 0.3 MILES. TURN LEFT AND GO SOUTH APPROX. 0.3 MILES. THIS LOCATION STAKE IS APPROX 250 FEET WEST OF LEASE ROAD.



COG OPERATING, LLC

PUCKETT 24 #37 WELL
LOCATED 895 FEET FROM THE NORTH LINE
AND 330 FEET FROM THE WEST LINE OF SECTION 24,
TOWNSHIP 17 SOUTH, RANGE 31 EAST, N.M.P.M.,
EDDY COUNTY, NEW MEXICO

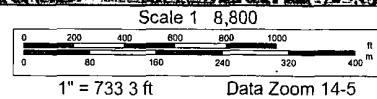
Survey Date: 3/16/11	Sheet 1 of 1 Sheets
W.O. Number. 11 11.0207	Dr By: LA
Date: 3/18/11	11110207
	Scale: 1"=100'

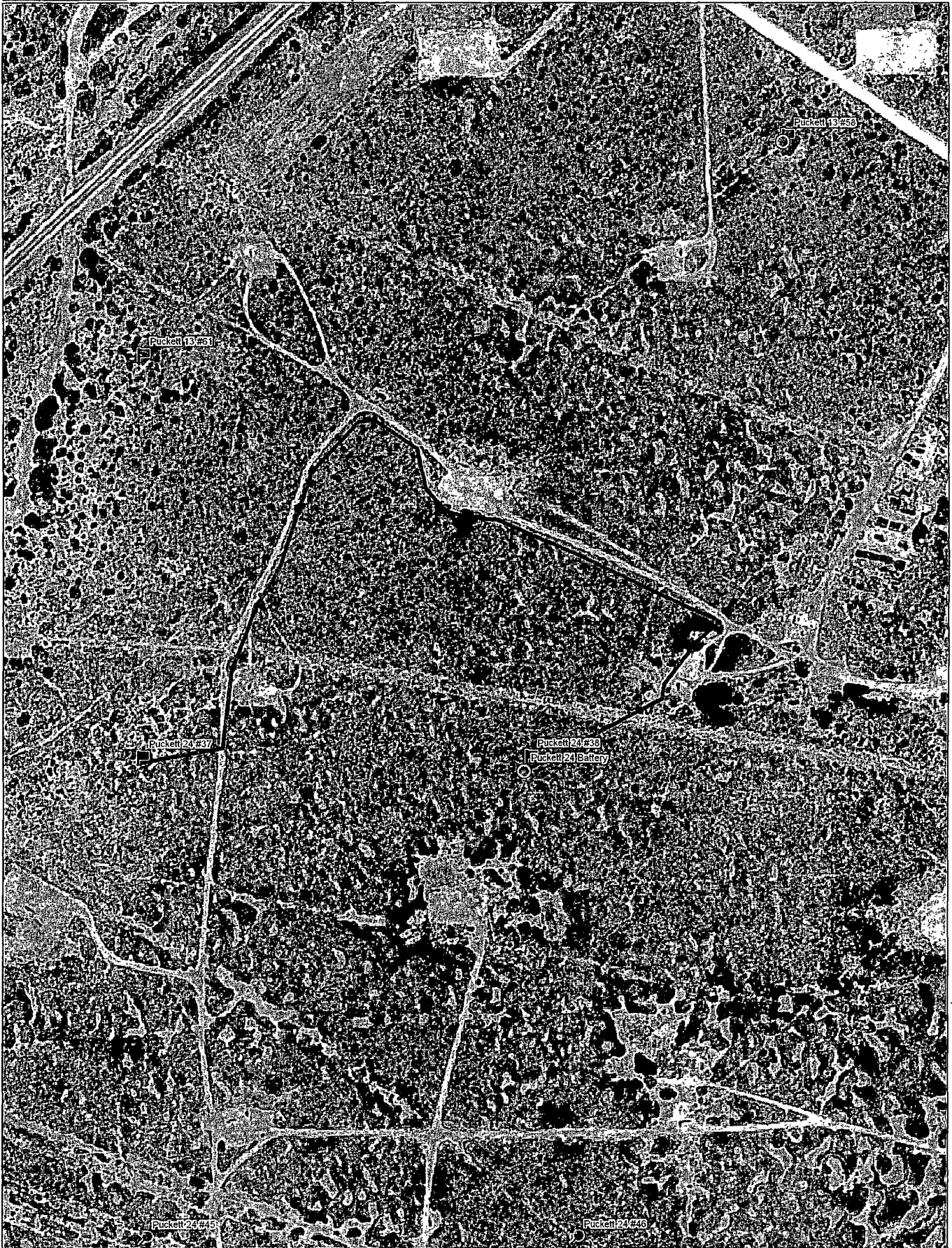


Data use subject to license.

© DeLorme XMap® 7.

www.delorme.com

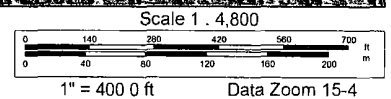
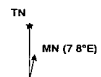




Data use subject to license.

© DeLorme. XMap® 7.

www.delorme.com



Offset wells to Puckett 24 #37

API#	Operator	County	Legal	Lease	Well#	Date Issued	Permitted Depth	Permit TVD	Images	Doc	Total Depth	Well Type	Well Status	Permit#
30-015-38450	COG OPERATING LLC	EDDY	S 23, T 17S, R 31E	SKELLY UNIT	810	1/20/2011	6,708	6,700	Yes	link	6,708	PO	Active Permit	TEMP1739904898
30-015-38444	COG OPERATING LLC	EDDY	S 23, T:17S, R 31E	SKELLY UNIT	799	1/18/2011	6,713	6,700	Yes	link	6,713	PO	Active Permit	TEMP1433083236
30-015-38445	COG OPERATING LLC	EDDY	S 23, T:17S, R 31E	SKELLY UNIT	803	1/18/2011	6,713	6,700	Yes	link	6,713	PO	Active Permit	TEMP150582107
30-015-38446	COG OPERATING LLC	EDDY	S 23, T:17S, R 31E	SKELLY UNIT	780	1/18/2011	6,709	6,700	Yes	link	6,709	PO	Active Permit	TEMP194278988
30-015-38379	COG OPERATING LLC	EDDY	S:23, T:17S, R:31E	SKELLY UNIT	814	12/10/2010	6,722	6,700	Yes	link	6,722	PO	Active Permit	TEMP412334538
30-015-38380	COG OPERATING LLC	EDDY	S:23, T:17S, R:31E	SKELLY UNIT	806	12/10/2010	6,722	6,700	Yes	link	6,722	PO	Active Permit	TEMP777461244
30-015-38348	COG OPERATING LLC	EDDY	S:14, T:17S, R:31E	SKELLY UNIT	669	11/22/2010	6,800		Yes	link	6,800	PO	Active Permit	TEMP1273970785
30-015-38349	COG OPERATING LLC	EDDY	S:23, T:17S, R:31E	SKELLY UNIT	807	11/22/2010	6,850		Yes	link	6,850	PO	Active Permit	TEMP1282820010
30-015-38362	COG OPERATING LLC	EDDY	S:14, T:17S, R:31E	SKELLY UNIT	646	11/22/2010	6,945	6,900	Yes	link	6,945	PO	Active Permit	TEMP169842468
30-015-38271	COG OPERATING LLC	EDDY	S:23, T:17S, R:31E	SKELLY UNIT	792	11/3/2010	7,025		Yes	link	7,025	PO	Active	TEMP71892526
30-015-38015	COG OPERATING LLC	EDDY	S:23, T:17S, R:31E	SKELLY UNIT	782	7/15/2010	7,113	7,100	Yes	link	7,113	PO	Active	TEMP499317321
30-015-38016	COG OPERATING LLC	EDDY	S 23, T:17S, R:31E	SKELLY UNIT	788	7/15/2010	7,050		Yes	link	7,080	O	Active	TEMP215915560
30-015-38017	COG OPERATING LLC	EDDY	S:23, T:17S, R 31E	SKELLY UNIT	791	7/15/2010	7,000		Yes	link	7,015	O	Active	TEMP1662677049
30-015-38224	COG OPERATING LLC	EDDY	S 14, T 17S, R:31E	SKELLY UNIT	651	5/28/2010	6,800		Yes	link	6,800	PO	Active Permit	TEMP8230580
30-015-37881	COG OPERATING LLC	EDDY	S:14, T 17S, R 31E	SKELLY UNIT	672	5/20/2010	6,925	6,900	Yes	link	7,057	O	Active Permit	TEMP1693910708
30-015-37885	COG OPERATING LLC	EDDY	S 23, T:17S, R:31E	SKELLY UNIT	783	5/20/2010	7,100		Yes	link	7,100	PO	Active Permit	TEMP1002832164
30-015-38104	COG OPERATING LLC	EDDY	S:23, T 17S, R 31E	SKELLY UNIT	771	5/20/2010	7,100		Yes	link	7,100	PO	Active Permit	TEMP241329455
30-019-37820	COG OPERATING LLC	GUADALUPE	S:14, T 17S, R:31E	SKELLY UNIT	679	4/23/2010	7,100		Yes	link	7,100	PO	Active Permit	TEMP498215849

30-015-37840	COG OPERATING LLC	EDDY	S 23, T:17S, R:31E	SKELLY UNIT	614	4/23/2010	6,900		Yes	link	6,900	PO	Active Permit	TEMP1732668153
30-015-37820	COG OPERATING LLC	EDDY	S:14, T:17S, R:31E	SKELLY UNIT	679	4/23/2010	7,100		Yes	link	6,795	O	Active Permit	TEMP192471633
30-015-37476	COG OPERATING LLC	EDDY	S 14, T:17S, R:31E	SKELLY UNIT	767	12/18/2009	6,900		Yes	link	6,863	O	Active Permit	TEMP1263940295
30-015-37477	COG OPERATING LLC	EDDY	S 14, T:17S, R:31E	SKELLY UNIT	682	12/18/2009	6,900		Yes	link	6,900	PO	Active Permit	TEMP99828041
30-015-37446	COG OPERATING LLC	EDDY	S 23, T:17S, R:31E	SKELLY UNIT	795	12/11/2009	6,900		Yes	link	6,920	O	Active Permit	TEMP157458034
30-015-37245	COG OPERATING LLC	EDDY	S:14, T 17S, R:31E	SKELLY UNIT	660	8/26/2009	6,800		Yes	link	6,835	O	Active Permit	TEMP349099075
30-015-37222	COG OPERATING LLC	EDDY	S:14, T:17S, R:31E	SKELLY UNIT	685	8/12/2009	6,800		Yes	link	6,808	O	Active Permit	TEMP996859581
30-015-37186	COG OPERATING LLC	EDDY	S 23, T:17S, R:31E	SKELLY UNIT	613	7/24/2009	6,500		Yes	link	6,511	O	Active Permit	TEMP1177720475
30-015-36963	COG OPERATING LLC	EDDY	S 23, T:17S, R:31E	SKELLY UNIT	631	2/25/2009	6,800		Yes	link	6,801	O	Active Permit	TEMP1998013594
30-015-36966	COG OPERATING LLC	EDDY	S:14, T:17S, R:31E	SKELLY UNIT	633	2/25/2009	6,800		Yes	link	6,798	O	Active Permit	TEMP1013086017
30-015-36965	COG OPERATING LLC	EDDY	S:14, T 17S, R:31E	SKELLY UNIT	634	2/25/2009	6,800		Yes	link	6,820	O	Active Permit	TEMP622490907
30-015-36832	COG OPERATING LLC	EDDY	S:14, T:17S, R:31E	SKELLY UNIT	621	12/5/2008	6,628	6,600	Yes	link	6,857	O	Active Permit	TEMP1082235356
30-015-36889	COG OPERATING LLC	EDDY	S:23, T:17S, R:31E	SKELLY UNIT	616	11/21/2008	6,500		Yes	link	6,810	O	Active Permit	TEMP2078079198
30-015-36885	COG OPERATING LLC	EDDY	S 14, T:17S, R:31E	SKELLY UNIT	605	11/4/2008	6,700		Yes	link	6,721	O	Active Permit	TEMP1484592087
30-015-36589	COG OPERATING L L C AGENT or COG OPERATING LLC	EDDY	S:23, T:17S, R:31E	SKELLY UNIT	990	8/19/2008	6,700		Yes	link	6,720	U	Active Permit	TEMP462510266
30-015-36597	COG OPERATING L L C AGENT or COG OPERATING LLC	EDDY	S:14, T 17S, R:31E	SKELLY UNIT	974	8/4/2008	6,511	6,500	Yes	link	6,500	O	Active Permit	TEMP1115166405
30-015-36498	COG OPERATING LLC	EDDY	S 23, T 17S, R:31E	SKELLY UNIT	989	8/1/2008	6,600		Yes	link	6,518	O	Active Permit	TEMP2076574087
	COG OPERATING			SKELLY										

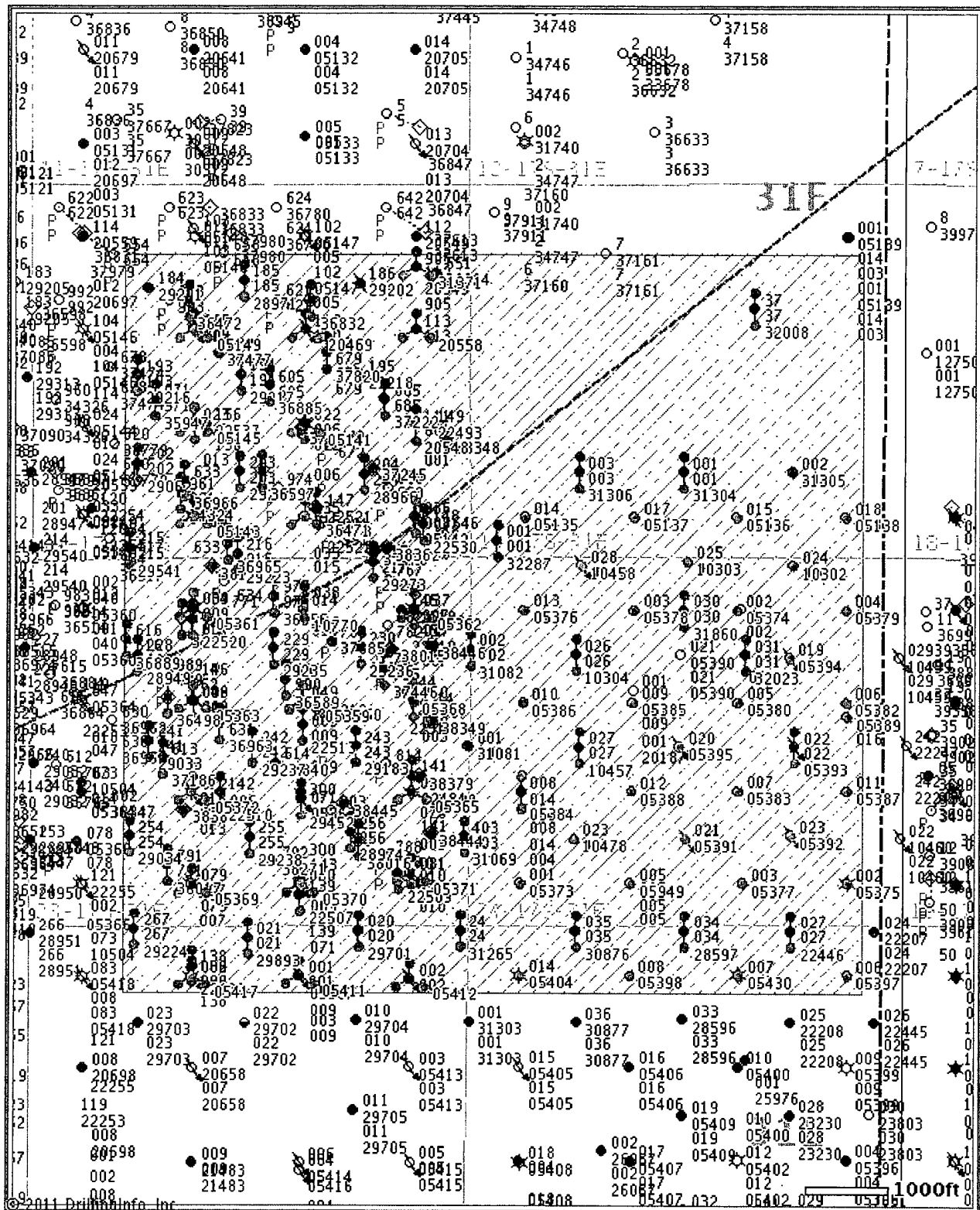
30-015-36472	LLC	EDDY	S 14, T:17S, R:31E	UNIT	993	7/31/2008	6,700		Yes	link	6,790	O	Active Permit	TEMP1877291289
30-015-36471	COG OPERATING LLC AGENT or COG OPERATING LLC	EDDY	S 14, T:17S, R:31E	SKELLY UNIT	991	7/31/2008	6,700		Yes	link	6,521	O	Active Permit	TEMP1244534606
30-015-36356	CHEVRON U S A INC or CHEVRON USA INC	EDDY	S:23, T 17S, R 31E	SKELLY UNIT	975	5/29/2008	6,600		Yes	link	6,747	O	Active Permit	TEMP1218095490
30-015-35947	CHEVRON USA, INC. or CHEVRON USA INC	EDDY	S.14, T:17S, R:31E	SKELLY UNIT	971	9/18/2007	6,600		Yes	link	6,580	O	Active Permit	TEMP1212590902
30-015-34324	CHEVRON USA, INC.	EDDY	S.14, T:17S, R:31E	SKELLY UNIT	961	9/2/2005	5,500		No	link	5,495	O	Active Permit	TEMP2040239420
30-015-34325	CHEVRON USA, INC	EDDY	S:23, T:17S, R 31E	SKELLY UNIT	962	9/2/2005	5,500		No	link	5,470	PO	Active Permit	TEMP1114623819
30-015-32023	HUDSON OIL COMPANY OF TEXAS	EDDY	S:24, T:17S, R 31E	PUCKETT A	031	6/16/2003	4,200		No	link	4,200	O	Active	TEMP218953726
30-015-32287	HUDSON OIL COMPANY OF TEXAS	EDDY	S 13, T.17S, R:31E	WESCOTT FEDERAL	001	6/16/2003	6,200		No	link	6,200	O	Active	TEMP412112998
30-015-32023	HUDSON OIL COMPANY OF TEXAS	EDDY	S 24, T:17S, R 31E	PUCKETT A	031	5/31/2003			No	link	4,200	O	Active	TEMP324459305
30-015-32287	HUDSON OIL COMPANY OF TEXAS	EDDY	S:13, T:17S, R 31E	WESCOTT FEDERAL	001	5/31/2003			No	link	6,200	O	Active	TEMP315762864
30-015-31860	HUDSON OIL COMPANY OF TEXAS	EDDY	S:24, T 17S, R:31E	PUCKETT A	030	9/3/2002	4,200		No	link	4,200	PO	Active Permit	TEMP638381170
30-015-31860	HUDSON OIL COMPANY OF TEXAS	EDDY	S:24, T.17S, R:31E	PUCKETT A	030	8/31/2002			No	link	4,200	PO	Active Permit	TEMP643617747
30-015-31371	CHEVRON USA, INC. or CHEVRON U S A INC	EDDY	S 14, T.17S, R:31E	SKELLY UNIT	905	5/1/2002			No	link	12,470	O	Active	TEMP1410731807
30-015-32008	HUDSON OIL COMPANY OF TEXAS	EDDY	S.13, T 17S, R:31E	PUCKETT B	037	3/8/2002			No	link	12,600	O	Pumping	TEMP91196321
30-015-10304	HUDSON OIL COMPANY OF TEXAS	EDDY	S.24, T:17S, R 31E	PUCKETT A	026	2/2/2001	0		No	link	5,250	PO	Active	TEMP1032595564
30-015-05365	WISER OIL CO (THE)	EDDY	S:23, T.17S, R:31E	SKELLY UNIT	070	9/10/2000	0		No	link	0	PI	Temporarily Abandoned	TEMP1773114365
30-015-05384	HUDSON OIL COMPANY OF TEXAS	EDDY	S:24, T:17S, R:31E	PUCKETT A	008	8/30/2000	0		No	link	0	I	Pumping	TEMP1456081271
30-015-31304	HUDSON OIL COMPANY OF TEXAS	EDDY	S.13, T:17S, R:31E	PUCKETT A LL	001	8/18/2000			No	link	4,045	O	Pumping	TEMP1345008382
30-015-31305	HUDSON OIL COMPANY OF TEXAS	EDDY	S:13, T 17S, R:31E	PUCKETT A LL	002	8/18/2000			No	link	4,070	O	Active	TEMP1500062189
	HUDSON OIL													

30-015-31306	COMPANY OF TEXAS	EDDY	S.13, T.17S, R.31E	PUCKETT ALL	003	8/18/2000			No	link	4,023	O	Pumping	TEMP1134165985
30-015-31265	WISER OIL CO (THE)	EDDY	S.26, T.17S, R.31E	LEA D	024	7/21/2000			No	link	4,150	O	Pumping	TEMP549717081
30-015-31081	HUDSON OIL COMPANY OF TEXAS	EDDY	S.24, T.17S, R.31E	PUCKETT A W H	001	4/12/2000			No	link	4,040	O	Active	TEMP1640434240
30-015-31082	HUDSON OIL COMPANY OF TEXAS	EDDY	S.24, T.17S, R.31E	PUCKETT A W H	002	4/12/2000			No	link	4,052	O	Pumping	TEMP1358798045
30-015-31069	WISER OIL CO (THE)	EDDY	S.23, T.17S, R.31E	SKELLY UNIT	403	4/5/2000			No	link	4,100	O	Pumping	TEMP438931061
30-015-30876	HUDSON OIL COMPANY OF TEXAS	EDDY	S.25, T.17S, R.31E	PUCKETT B	035	12/17/1999			No	link	4,050	O	Pumping	TEMP2032622302
30-015-10457	HUDSON OIL COMPANY OF TEXAS	EDDY	S.24, T.17S, R.31E	PUCKETT A	027	6/1/1998			No	link	3,900	O	Pumping	TEMP537549373
30-015-29201	WISER OIL CO (THE)	EDDY	S.14, T.17S, R.31E	SKELLY UNIT	184	4/7/1998			No	link		PO	Unknown	TEMP901810824
30-015-29202	WISER OIL CO (THE)	EDDY	S.14, T.17S, R.31E	SKELLY UNIT	186	4/7/1998			No	link		X	Cancelled	TEMP1189218252
30-015-29218	WISER OIL CO (THE)	EDDY	S.14, T.17S, R.31E	SKELLY UNIT	195	4/7/1998			No	link		X	Cancelled	TEMP1231910056
30-015-05412	WISER OIL CO (THE)	EDDY	S.26, T.17S, R.31E	LEA D	002	1/23/1998	0		No	link	0	I	Injection Well	TEMP698110613
30-015-29893	WISER OIL CO (THE)	EDDY	S.26, T.17S, R.31E	LEA D	021	10/16/1997			No	link	4,100	O	Pumping	TEMP876201214
30-015-29701	WISER OIL CO (THE)	EDDY	S.26, T.17S, R.31E	LEA D	020	8/22/1997			No	link	4,100	O	Pumping	TEMP1339884935
30-015-05417	WISER OIL CO (THE)	EDDY	S.26, T.17S, R.31E	SKELLY UNIT	082	7/24/1997	0		No	link	3,876	I	Injection Well	TEMP1058620333
30-015-20469	WISER OIL CO (THE)	EDDY	S.14, T.17S, R.31E	SKELLY UNIT	110	7/18/1997	0		No	link	0	PI	Injection Well	TEMP1919242564
30-015-05411	WISER OIL CO (THE)	EDDY	S.26, T.17S, R.31E	LEA D	001	5/27/1997	0		No	link	0	PI	Injection Well	TEMP730429521
30-015-05145	WISER OIL CO (THE)	EDDY	S.14, T.17S, R.31E	SKELLY UNIT	023	4/24/1997	0		No	link	3,860	I	Pumping	TEMP1085139242
30-015-29541	WISER OIL CO (THE)	EDDY	S.14, T.17S, R.31E	SKELLY UNIT	215	4/24/1997			No	link	4,000	O	Pumping	TEMP394803719
30-015-10773	WISER OIL CO (THE)	EDDY	S.14, T.17S, R.31E	SKELLY UNIT	035	4/4/1997	0		No	link	3,944	I	Pumping	TEMP1643638114
30-015-05359	WISER OIL CO (THE)	EDDY	S.23, T.17S, R.31E	SKELLY UNIT	049	3/31/1997	0		No	link	3,850	O	Active	TEMP1260261288
30-015-05361	WISER OIL CO (THE)	EDDY	S.23, T.17S, R.31E	SKELLY UNIT	039	3/28/1997	0		No	link	3,841	G	Active	TEMP1715402029
30-015-05372	WISER OIL CO (THE)	EDDY	S.23, T.17S, R.31E	SKELLY UNIT	072	3/19/1997	0		No	link	3,000	I	Injection Well	TEMP2061308498
30-015-05370	WISER OIL CO (THE)	EDDY	S.23, T.17S, R.31E	SKELLY UNIT	080	3/18/1997	0		No	link	3,884	I	Injection Well	TEMP1978570277
30-015-29452	WISER OIL CO (THE)	EDDY	S.23, T.17S, R.31E	SKELLY UNIT	300	3/10/1997			No	link	4,050	PI	Injection Well	TEMP1640117890
30-015-29273	WISER OIL CO (THE)	EDDY	S.14, T.17S, R.31E	SKELLY UNIT	217	11/14/1996			No	link	4,120	O	Pumping	TEMP863447778
30-015-29235	WISER OIL CO (THE)	EDDY	S.23, T.17S, R.31E	SKELLY UNIT	229	10/23/1996			No	link	4,025	O	Pumping	TEMP902564998
	WISER OIL CO			SKELLY										

30-015-29236	(THE)	EDDY	S:23, T:17S, R:31E	UNIT	230	10/23/1996			No	link	4,100	O	Active	TEMP782138592
30-015-29237	WISER OIL CO (THE)	EDDY	S:23, T:17S, R:31E	SKELLY UNIT	242	10/23/1996			No	link	4,025	O	Temporarily Abandoned	TEMP755590918
30-015-29238	WISER OIL CO (THE)	EDDY	S:23, T:17S, R:31E	SKELLY UNIT	255	10/23/1996			No	link	4,100	O	Pumping	TEMP531394153
30-015-29224	WISER OIL CO (THE)	EDDY	S:23, T:17S, R:31E	SKELLY UNIT	267	10/15/1996			No	link	3,950	O	Pumping	TEMP1572412833
30-015-29223	WISER OIL CO (THE)	EDDY	S:14, T:17S, R:31E	SKELLY UNIT	216	10/11/1996			No	link	4,100	O	Pumping	TEMP1678603529
30-015-29216	WISER OIL CO (THE)	EDDY	S:14, T:17S, R:31E	SKELLY UNIT	193	10/9/1996			No	link	4,100	O	Pumping	TEMP982977518
30-015-29217	WISER OIL CO (THE)	EDDY	S:14, T:17S, R:31E	SKELLY UNIT	194	10/9/1996			No	link	4,100	O	Pumping	TEMP950273861
30-015-29219	WISER OIL CO (THE)	EDDY	S:14, T:17S, R:31E	SKELLY UNIT	203	10/9/1996			No	link	4,100	PO	Pumping	TEMP1203823386
30-015-29183	WISER OIL CO (THE)	EDDY	S:23, T:17S, R:31E	SKELLY UNIT	243	9/24/1996			No	link	4,050	O	Pumping	TEMP1196790637
30-015-29062	WISER OIL CO (THE)	EDDY	S:14, T:17S, R:31E	SKELLY UNIT	202	7/25/1996			No	link	4,050	O	Pumping	TEMP194550400
30-015-29033	WISER OIL CO (THE)	EDDY	S:23, T:17S, R:31E	SKELLY UNIT	241	7/2/1996			No	link	4,000	O	Pumping	TEMP1048323534
30-015-29034	WISER OIL CO (THE)	EDDY	S:23, T:17S, R:31E	SKELLY UNIT	254	7/2/1996			No	link	4,050	O	Pumping	TEMP1021775860
30-015-28971	WISER OIL CO (THE)	EDDY	S:14, T:17S, R:31E	SKELLY UNIT	185	5/9/1996			No	link	4,150	O	Pumping	TEMP828481601
30-015-28974	WISER OIL CO (THE)	EDDY	S:23, T:17S, R:31E	SKELLY UNIT	256	5/9/1996			No	link	4,050	O	Pumping	TEMP607635732
30-015-28966	WISER OIL CO (THE)	EDDY	S:14, T:17S, R:31E	SKELLY UNIT	204	5/2/1996			No	link	4,150	O	Active	TEMP1213230501
30-015-28949	WISER OIL CO (THE)	EDDY	S:23, T:17S, R:31E	SKELLY UNIT	228	4/24/1996			No	link	4,005	O	Active	TEMP524695605
30-015-05141	WISER OIL CO (THE)	EDDY	S:14, T:17S, R:31E	SKELLY UNIT	022	9/1/1995	0		No	link	3,311	G	Flowing	TEMP1315603833
30-015-05143	WISER OIL CO (THE)	EDDY	S:14, T:17S, R:31E	SKELLY UNIT	034	9/1/1995	0		No	link	0	G	Flowing	TEMP947783884
30-015-05149	WISER OIL CO (THE)	EDDY	S:14, T:17S, R:31E	SKELLY UNIT	105	9/1/1995	0		No	link	0	I	Injection Well	TEMP595353892
30-015-05362	WISER OIL CO (THE)	EDDY	S:23, T:17S, R:31E	SKELLY UNIT	037	9/1/1995			No	link	3,886	O	Temporarily Abandoned	TEMP1682698373
30-015-05363	WISER OIL CO (THE)	EDDY	S:23, T:17S, R:31E	SKELLY UNIT	048	9/1/1995	0		No	link	3,857	I	Pumping	TEMP1907391731
30-015-05369	WISER OIL CO (THE)	EDDY	S:23, T:17S, R:31E	SKELLY UNIT	079	9/1/1995	0		No	link	3,894	I	Injection Well	TEMP2003578956
30-015-05371	WISER OIL CO (THE)	EDDY	S:23, T:17S, R:31E	SKELLY UNIT	081	9/1/1995	0		No	link	3,910	I	Injection Well	TEMP2047072789
30-015-10770	WISER OIL CO (THE)	EDDY	S:23, T:17S, R:31E	SKELLY UNIT	038	9/1/1995			No	link	3,910	PI	Injection Well	TEMP1884490925
30-015-20548	WISER OIL CO (THE)	EDDY	S:14, T:17S, R:31E	SKELLY UNIT	111	9/1/1995	0		No	link	3,835	O	Active	TEMP424647735
30-015-20558	WISER OIL CO (THE)	EDDY	S:14, T:17S, R:31E	SKELLY UNIT	113	9/1/1995	0		No	link	3,959	PO	Pumping	TEMP1203748934
30-015-22482	WISER OIL CO (THE)	EDDY	S:26, T:17S, R:31E	SKELLY UNIT	138	9/1/1995	0		No	link	3,980	O	Active	TEMP1919063893
30-015-22484	WISER OIL CO (THE)	EDDY	S:23, T:17S, R:31E	SKELLY UNIT	141	9/1/1995	0		No	link	2,700	O	Active	TEMP2126970865
	WISER OIL CO			SKELLY										

30-015-22507	(THE)	EDDY	S 23, T 17S, R 31E	UNIT	139	9/1/1995	0	No	link	2,680	O	Pumping	TEMP1535084490
30-015-22509	WISER OIL CO (THE)	EDDY	S 23, T:17S, R:31E	SKELLY UNIT	140	9/1/1995	0	No	link	2,701	O	Active	TEMP1800561231
30-015-22510	WISER OIL CO (THE)	EDDY	S:23, T:17S, R:31E	SKELLY UNIT	142	9/1/1995	0	No	link	2,650	O	Pumping	TEMP1762086341
30-015-22513	WISER OIL CO (THE)	EDDY	S:23, T:17S, R:31E	SKELLY UNIT	143	9/1/1995	0	No	link	2,650	O	Temporarily Abandoned	TEMP428931403
30-015-22520	WISER OIL CO (THE)	EDDY	S 23, T:17S, R:31E	SKELLY UNIT	146	9/1/1995	0	No	link	2,646	O	Pumping	TEMP534352601
30-015-22530	WISER OIL CO (THE)	EDDY	S:14, T:17S, R:31E	SKELLY UNIT	148	9/1/1995		No	link		O	Temporarily Abandoned	TEMP140496970
30-015-28597	HUDSON OIL COMPANY OF TEXAS	EDDY	S:25, T 17S, R:31E	PUCKETT B	034	7/26/1995		No	link	4,020	O	Pumping	TEMP668151868
30-015-22446	HUDSON OIL COMPANY OF TEXAS	EDDY	S 25, T:17S, R 31E	PUCKETT B	027	7/1/1978	0	No	link	3,904	O	Pumping	TEMP1526362508
30-015-22493	STEVENS OPERATING CORPORATION or HANAGAN PETROLEUM CORP	EDDY	S:14, T:17S, R:31E	PRE-ONGARD WELL	149	1/1/1970		No	link		PO	Active Permit	TEMP755496528
30-015-22537	STEVENS OPERATING CORPORATION or HANAGAN PETROLEUM CORP	EDDY	S 14, T:17S, R:31E	PRE-ONGARD WELL	156	1/1/1970		No	link		PO	Active Permit	TEMP966723674
30-015-05393	HUDSON OIL COMPANY OF TEXAS	EDDY	S:24, T:17S, R:31E	PUCKETT A	022	12/13/1960		No	link		I	Injection Well	TEMP1817008271

Offset wells to Puckett 24 #37



© 2011 Drilling Info, Inc. All rights reserved. All data and information is provided "As Is" and subject to the [DI subscription agreement](#).