

DISTRICT I
1625 N FRENCH DR., HOBBS, NM 88240

DISTRICT II
6601 W. GRAND AVENUE, ARTESIA, NM 88210

DISTRICT III
1000 RIO BRAZOS RD., AZTEC, NM 87410

DISTRICT IV
11885 S. ST. FRANCIS DR., SANTA FE, NM 87505

State of New Mexico
Energy, Minerals and Natural Resources Department

OIL CONSERVATION DIVISION
11885 SOUTH ST. FRANCIS DR.
Santa Fe, New Mexico 87505

Form C-102
Revised October 12, 2005
Submit to Appropriate District Office
State Lease - 4 Copies
Fee Lease - 3 Copies

WELL LOCATION AND ACREAGE DEDICATION PLAT

☐ AMENDED REPORT

API Number 30-015- 39126	Pool Code 28509	Pool Name GRAYBURG JACKSON; SR-Q-G-SA
Property Code 308086 ✓	Property Name BURCH KEELY UNIT ✓	Well Number 624 ✓
OGRID No. 229137 ✓	Operator Name COG OPERATING, LLC ✓	Elevation 3611'

Surface Location

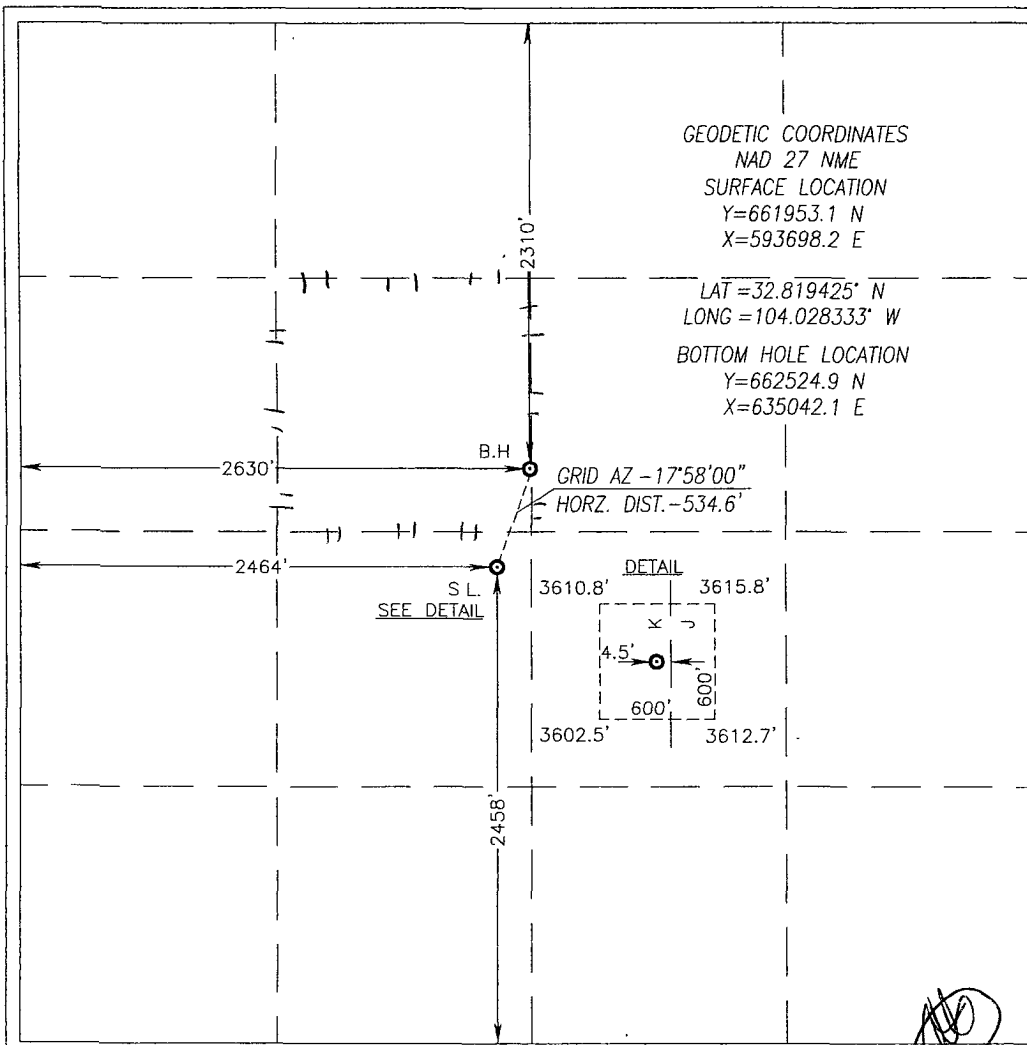
UL or lot No. K	Section 24	Township 17-S	Range 29-E	Lot Idn	Feet from the 2458	North/South line SOUTH	Feet from the 2464	East/West line WEST	County EDDY ✓
--------------------	---------------	------------------	---------------	---------	-----------------------	---------------------------	-----------------------	------------------------	------------------

Bottom Hole Location If Different From Surface

UL or lot No. F	Section 24	Township 17-S	Range 29-E	Lot Idn	Feet from the 2310	North/South line NORTH	Feet from the 2630	East/West line WEST	County EDDY
--------------------	---------------	------------------	---------------	---------	-----------------------	---------------------------	-----------------------	------------------------	----------------

Dedicated Acres 40	Joint or Infill	Consolidation Code	Order No.
-----------------------	-----------------	--------------------	-----------

NO ALLOWABLE WILL BE ASSIGNED TO THIS COMPLETION UNTIL ALL INTERESTS HAVE BEEN CONSOLIDATED
OR A NON-STANDARD UNIT HAS BEEN APPROVED BY THE DIVISION



OPERATOR CERTIFICATION

I hereby certify that the information herein is true and complete to the best of my knowledge and belief, and that this organization either owns a working interest or unleased mineral interest in the land including the proposed bottom hole location or has a right to drill this well at this location pursuant to a contract with an owner of such mineral or working interest, or to a voluntary pooling agreement or a compulsory pooling order heretofore entered by the division.

Robyn Odom 3/8/2011
Signature Date
Robyn Odom
Printed Name

SURVEYOR CERTIFICATION

I hereby certify that the well location shown on this plat was plotted from field notes of actual surveys made by me or under my supervision, and that the same is true and correct to the best of my belief

NOVEMBER 2, 2010

Date Surveyed
Signature & Seal of Professional Surveyor LA

Ronald J. Edson 02/21/2011
11.13.0372
NEW MEXICO
PROFESSIONAL SURVEYOR

Certificate No. GARY G. EDSON 12661
RONALD J. EDSON 3239