

DISTRICT I  
1625 N. French Dr., Hobbs, NM 88240  
DISTRICT II  
1301 W. Grand Avenue, Artesia, NM 88210

DISTRICT III  
1000 Rio Brazos Rd., Aztec, NM 87410

DISTRICT IV  
1220 S. St. Francis Dr., Santa Fe, NM 87505

State of New Mexico  
Energy, Minerals and Natural Resources Department

Form C-102  
Revised July 16, 2010

Submit one copy to appropriate  
District Office

**OIL CONSERVATION DIVISION**  
1220 South St. Francis Dr.  
Santa Fe, New Mexico 87505

WELL LOCATION AND ACREAGE DEDICATION PLAT

AMENDED REPORT

API Number <b>30-014-39188</b>	Pool Code <b>60660 49622</b>	Pool Name <b>PARKWAY TURKEY TRACK-BONE SPRING POOL</b>
Property Code <b>38688</b>	Property Name <b>FOUR PEAKS "35" FEDERAL</b>	Well Number <b>1H</b>
OGRID No. <b>14744</b>	Operator Name <b>MEWBOURNE OIL COMPANY</b>	Elevation <b>3315'</b>

Surface Location

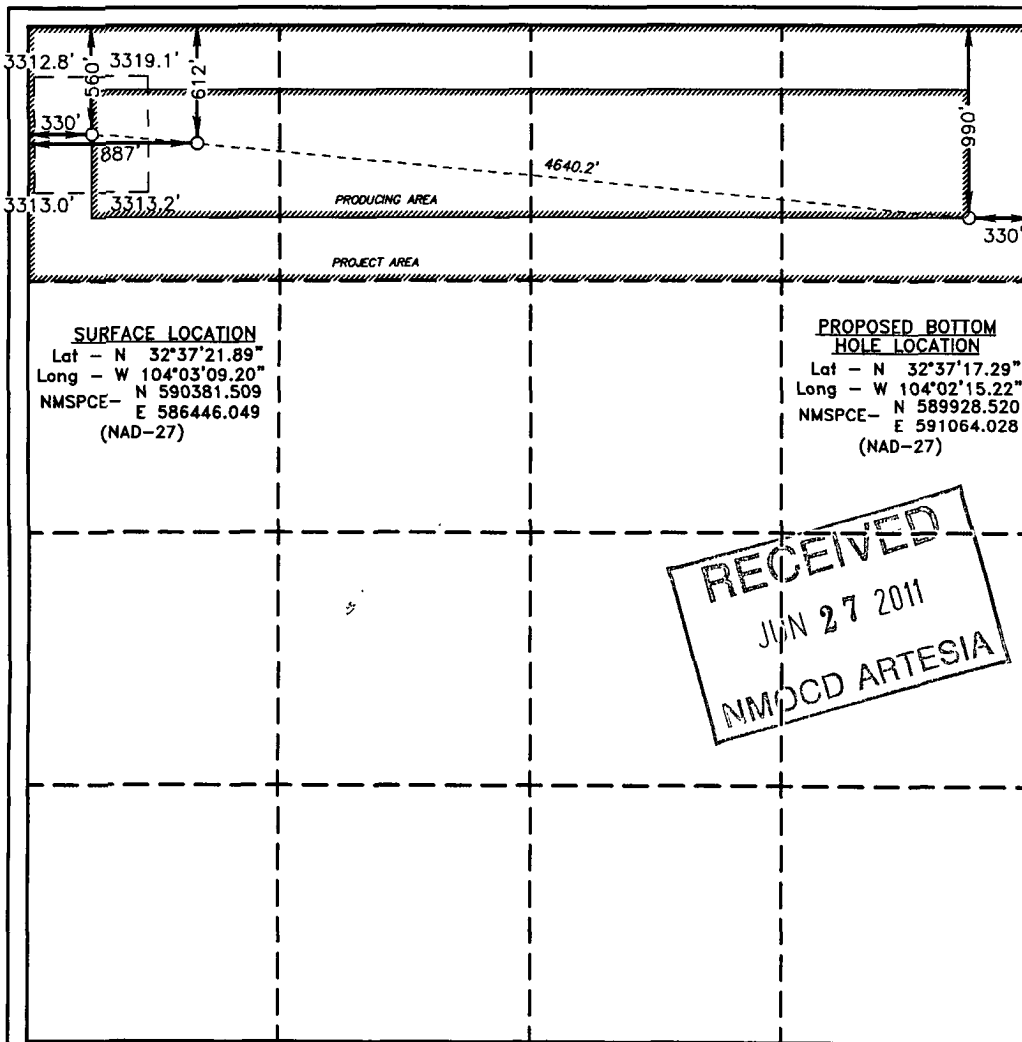
UL or lot No.	Section	Township	Range	Lot Idn	Feet from the	North/South line	Feet from the	East/West line	County
D	35	19 S	29 E		560	NORTH	330	WEST	EDDY

Bottom Hole Location If Different From Surface

UL or lot No.	Section	Township	Range	Lot Idn	Feet from the	North/South line	Feet from the	East/West line	County
A	35	19 S	29 E		990	NORTH	330	EAST	EDDY

Dedicated Acres <b>160</b>	Joint or Infill	Consolidation Code	Order No.
-------------------------------	-----------------	--------------------	-----------

NO ALLOWABLE WILL BE ASSIGNED TO THIS COMPLETION UNTIL ALL INTERESTS HAVE BEEN CONSOLIDATED OR A NON-STANDARD UNIT HAS BEEN APPROVED BY THE DIVISION



**OPERATOR CERTIFICATION**

I hereby certify that the information contained herein is true and complete to the best of my knowledge and belief, and that this organization either owns a working interest or unleased mineral interest in the land including the proposed bottom hole location or has a right to drill this well at this location pursuant to a contract with an owner of such a mineral or working interest, or to a voluntary pooling agreement or a compulsory pooling order heretofore entered by the division.

*Jaexie Lathan* 3/3/11  
Signature Date

*Jaexie Lathan*  
Printed Name

*jlathan@mewbourne.com*  
Email Address

**SURVEYOR CERTIFICATION**

I hereby certify that the well location shown on this plat was plotted from field notes of actual surveys made by me or under my supervision, and that the same is true and correct to the best of my belief.

JAN 17 2011 47 JONES  
Date Surveyed

*Gary L. Jones*  
Signature & Seal of Professional Surveyor 7977

Certificate No. Gary L. Jones 7977

BASIN SURVEYS 23983