

UNITED STATES  
DEPARTMENT OF THE INTERIOR  
BUREAU OF LAND MANAGEMENT

**SUNDRY NOTICES AND REPORTS ON WELLS**  
*Do not use this form for proposals to drill or to re-enter an abandoned well. Use form 3160-3 (APD) for such proposals.*

OCD Artesia

FORM APPROVED  
OMB NO 1004-0135  
Expires: July 31, 2010

5. Lease Serial No. NMLC056302A
6. If Indian, Allottee or Tribe Name
7. If Unit or CA/Agreement, Name and/or No.
8. Well Name and No KENNEDY JOHNSON 1
9. API Well No 30-015-05008-00-S1
10. Field and Pool, or Exploratory GRAYBURG
11. County or Parish, and State EDDY COUNTY, NM

**SUBMIT IN TRIPLICATE - Other instructions on reverse side.**

1. Type of Well <input checked="" type="checkbox"/> Oil Well <input type="checkbox"/> Gas Well <input type="checkbox"/> Other	
2. Name of Operator EXXONMOBIL CORPORATION	
Contact: JACQUELINE DAVIS E-Mail: jackie.p.davis@exxonmobil.com	
3a. Address HOUSTON, TX 77210-4358	3b. Phone No. (include area code) Ph: 281-654-1913 Fx: 281-654-1940
4. Location of Well (Footage, Sec., T., R., M., or Survey Description) Sec 35 T16S R31E SENW 1980FNL 1980FWL UL F	

**12. CHECK APPROPRIATE BOX(ES) TO INDICATE NATURE OF NOTICE, REPORT, OR OTHER DATA**

TYPE OF SUBMISSION	TYPE OF ACTION			
<input type="checkbox"/> Notice of Intent	<input type="checkbox"/> Acidize	<input type="checkbox"/> Deepen	<input type="checkbox"/> Production (Start/Resume)	<input type="checkbox"/> Water Shut-Off
<input checked="" type="checkbox"/> Subsequent Report	<input type="checkbox"/> Alter Casing	<input type="checkbox"/> Fracture Treat	<input type="checkbox"/> Reclamation	<input type="checkbox"/> Well Integrity
<input type="checkbox"/> Final Abandonment Notice	<input type="checkbox"/> Casing Repair	<input type="checkbox"/> New Construction	<input type="checkbox"/> Recomplete	<input type="checkbox"/> Other
	<input type="checkbox"/> Change Plans	<input checked="" type="checkbox"/> Plug and Abandon	<input type="checkbox"/> Temporarily Abandon	
	<input type="checkbox"/> Convert to Injection	<input type="checkbox"/> Plug Back	<input type="checkbox"/> Water Disposal	

13. Describe Proposed or Completed Operation (clearly state all pertinent details, including estimated starting date of any proposed work and approximate duration thereof. If the proposal is to deepen directionally or recompleate horizontally, give subsurface locations and measured and true vertical depths of all pertinent markers and zones. Attach the Bond under which the work will be performed or provide the Bond No on file with BLM/BIA. Required subsequent reports shall be filed within 30 days following completion of the involved operations. If the operation results in a multiple completion or recompleation in a new interval, a Form 3160-4 shall be filed once testing has been completed. Final Abandonment Notices shall be filed only after all requirements, including reclamation, have been completed, and the operator has determined that the site is ready for final inspection )

This Sundry Notice is being submitted to report daily P&A completion activity for Kennedy Johnson A  
1.

Attachment:  
Regulatory Detail Report  
Wellbore Sketch

RECEIVED

AUG 4 2011

NMOCD ARTESIA

Accepted as to plugging of the well bore.  
Liability under bond is retained until  
Surface restoration is completed.

RECLAMATION  
DUE 12-10-11

14. Thereby certify that the foregoing is true and correct.

Electronic Submission #113160 verified by the BLM Well Information System  
For EXXONMOBIL CORPORATION, sent to the Carlsbad  
Committed to AFMSS for processing by KURT SIMMONS on 07/20/2011 (11KMS1072S)

Name (Printed/Typed) JACQUELINE DAVIS

Title SUPPORT STAFF TECHNICAL ASST

Signature (Electronic Submission)

Date 07/18/2011

**THIS SPACE FOR FEDERAL OR STATE OFFICE USE**

Approved By

ACCEPTED

JAMES A AMOS  
Title SUPERVISOR EPS

Date 07/25/2011

Conditions of approval, if any, are attached. Approval of this notice does not warrant or certify that the applicant holds legal or equitable title to those rights in the subject lease which would entitle the applicant to conduct operations thereon.

Office Carlsbad

Title 18 U.S.C. Section 1001 and Title 43 U.S.C. Section 1212, make it a crime for any person knowingly and willfully to make to any department or agency of the United States any false, fictitious or fraudulent statements or representations as to any matter within its jurisdiction.

**\*\* BLM REVISED \*\* BLM REVISED \*\* BLM REVISED \*\* BLM REVISED \*\* BLM REVISED \*\***

PA 04/08/2011



# Regulatory Detail Report

Well: Kennedy-Johnsfed A - 3

ExxonMobil Production Company

Printed: 7/14/2011 Page #1 of 5 Page(s)

Field: GRAYBURG JACKSON

## Well Header

Lease KENNEDY-JOHNSEDA	County/District Eddy	Territory/State New Mexico	ID Surface Location 7D10C650B3B14344E04400144F4A D18A	Critical Lease/Well
---------------------------	-------------------------	-------------------------------	---	---------------------

## Wellbore Data

Section	Diameter (in)	Actual Top MD (ftKB)	Bottom MD (ftKB)	Act Top (TVD) (ftKB)	Act Btm (TVD) (ftKB)	Act End Dt/Tm
			4,259.0			

## Deviation Surveys

Description	Definitive?	Survey Dt/Tm	Comments

## Casing Strings

<des> @ <depthbtm> Prop? <proposedrun>						
Description	Bottom MD (ftKB)		Set Depth TVD (ftKB)		Run Date/Time	
Description	Nominal OD (in)	Nominal Weight (lb/ft)	Grade	Length (ft)	Top MD (ftKB)	Bottom MD (ftKB)

## Cement

<des> <cementtype> <dtmstart>						
Description	Cement Job Type	String	Start Date/Ti...	End Date/Time	Evaluation Method	Evaluation

## Production Tubing Strings

<des> set at <depthbtm> ftKB on <dtmrun>										
Tubing Description				Measured Bottom or Set Depth (ftKB)				Run Date/Time		
Item Des	OD (in)	Wt (lb/ft)	Grade	Make	Model	Top (ftKB)	Btm (ftKB)	Top (TVD) (ftKB)	Btm (TVD) (ftKB)	Len (ft)

## Perforations

Interval Type	Date/Time	Top (ftKB)	Btm (ftKB)	Top (TVD) (ftKB)	Btm (TVD) (ftKB)	Shot Dens (shots/ft)	Entered Shot Total	Gun Des	Gun Size (in)	Phasing (°)	Com	Cur Stat Date	Current Status
Open Hole		3,443.9	4,258.9								1		
Open Hole		3,934.0	4,258.9								2		
Open Hole		3,914.0	4,258.9								3		

## Stimulations & Other Treatments

<typ> on <dtm>					
Type	Diversion Method	ISP (psi)	Prop In Form (lb)	Comment	Date/Time

Fluid Name	Fluid	Dens Fluid (*API)	Com

Stg #	Stage Type	Top (ftKB)	Btm (ftKB)	Top (TVD) (ftKB)	Btm (TVD) (ftKB)	Avg Casing Pres (psi)	Avg Tubing Pres (psi)	P Break (psi)	Avg Pump Rate (gpm)	Com

## Other In Hole

Des	Run Date/Time	OD (in)	Top (ftKB)	Btm (ftKB)	Top (TVD) (ftKB)	Btm (TVD) (ftKB)	Ass'd Strg	Comments

## Job

### Plug and Abandonment Only, 5/18/2011 00:00 - <dtmend>

Job Category	Primary Job Type	Job Subcategory	Job Start Date/Time	Job End Date/Time	Job Summary
Permanent	Plug and Abandonment Only		5/18/2011		

## Daily Operations

5/18/2011 00:00 - 5/19/2011 00:00

### Management Summary

RWI moved in equipment and began building location.

Comments
shutdown for night RWI building location

# Regulatory Detail Report

Well: Kennedy-Johnsfed A - 3

Field: GRAYBURG JACKSON

ExxonMobil Production Company

Printed: 7/14/2011 Page #2 of 5 Page(s)

Comments
shutdown for night
5/19/2011 00:00 - 5/20/2011 00:00
Management Summary
Roads rig & plugging equipment to location. Review JSA. LOTO unit. Wait on location.
Comments
shut down for night.
Road rig and plugging equipment to location.
Review JSA, source gas test H2S monitors. LOTO unit. Remove flowlines
maintain equipment.
Drove crew home
shutdown for night.
5/20/2011 00:00 - 5/21/2011 00:00
Management Summary
Dug out cellar, rig up pulling unit.
Comments
Shut down for night.
Dug out cellar, rig up pulling unit.
Shut down for night.
5/23/2011 00:00 - 5/24/2011 00:00
Management Summary
POOH with rods and pump, ND wellhead, NU BOP and test.
Comments
Shut down for night.
Crew travel to location, reviewed BJSA, source gas tested H2S monitors
Opened well, 0 psi shut in.
Layed down polished rod, unseated pump, layed down rod subs, pick up polished rod.
Pumped 85 bls brine down casing, 5 bls down tubing, could not circulate due to wellheadpacking leak.
Lunch break and reviewed BJSA.
POOH and layed down 143-3/4" steel rods.
Rig down rod equipment, raise work floor.
Replaced wellhead packing, circulated 70 bls brine
ND wellhead.
NU BOP and tested to 500 psi. Secured well for night.
Crew travel.
Shut down for night.
5/24/2011 00:00 - 5/25/2011 00:00
Management Summary
POOH with 115 jts of production 2-3/8" tubing, dropped 1 jt in hole. RIH with perf sub to 3566'. Circulated 50 SXS cement at 3566', displaced to 3286'.
Comments
Shut down for night.
Crew travel to location. Reviewed BJSA, source gas tested H2S monitors. Opened well with 0 psi shut in.
Lower floor, rig up tubing handling equipment.
POOH, layed down 115 jts of 2-3/8" old production tubing, dropped 1 jt in hole.
Tally work string. Contact Richard with BLM, let him know that we dropped 1 joint of 2-3/8" tubing in hole.
Lunch break for crew and reviewed BJSA.
Pick up perf sub on 2-3/8" work string, RIH to 3566'.
Break circulation, pumped 20 bls brine water.
Pumped 50 SXS cement at 3566', displaced to 3286'.
POOH, layed down 9 jts and stood back 10 stands of 2-3/8" work string.
Reverse out 15 bls brine water, secured well for night.
Crew travel.
Shut down for night.
5/25/2011 00:00 - 5/26/2011 00:00
Management Summary
Tag TOC @ 3410', circ 25 SXS CMT, WOC, tag TOC @ 3371', circ 25 SXS cmt, WOC.
Comments
Shut down for night.
Crew travel to location, reviewed BJSA, source gas tested H2S monitors.
Opened well with 0-psi shut in pressure.
TIH, tagged TOC at 3410'

# Regulatory Detail Report

Well: Kennedy-Johnsfed A - 3

Field: GRAYBURG JACKSON

ExxonMobil Production Company

Printed: 7/14/2011 Page #3 of 5 Page(s)

Comments	
Break circulation, pumped 25 SXS cement at 3410' displaced to 3210. POOH, lay down 6 jts tubing, stood back 10 stands. Reverse out 15 bls. Waiting on cement. RIH and tagged cement at 3371'. Contacted Richard with BLM for status update. Break circulation, pumped 40 bls brine water. Pumped 25 SXS cement at 3371', displaced to 3171'. POOH, layed down 6 jts, stood back 10 stands. Reverse out 15 bls brine, secured well for night. Crew travel. Shut down for night.	
5/26/2011 00:00 - 5/27/2011 00:00	
Management Summary	
Tag TOC @ 3242', unable to load hole. pump 75 SXS cmt, tag @ 2980', pump 35 SXS cmt, WOC.	
Comments	
Shut down for night. Crew travel to location, reviewed BJSA, source gas tested H2S monitors. Opened well with 0 psi shut in. TIH tagged TOC at 3242'. Load and test casing, well would not pressure up. Contact Richard with BLM. He approved pumping 75 SXS cmt at 3242'. Break circulation, pumped 75 SXS cmt at 3242', displaced to 2817'. POOH, layed down 13 jts of tubing, stood back 10 stands. Reverse out 15 bls brine water. Waited on cement. TIH, tagged TOC at 2980'. Load and test hole, would not pressure up. Pumped 10 bls brine at 2 bpm / 100 psi. Contact Richard with BLM for status update. Received approval to pump additional 35 SXS cmt. Pumped 35 SXS cmt at 2980', displaced to 2780'. POOH, layed down 6 jts of tubing, stood back 10 stands. Reverse out 15 bls brine water., secured well for night. Crew travel. Shut down for night.	
5/27/2011 00:00 - 5/28/2011 00:00	
Management Summary	
Tag TOC @ 2790', took 5 bls to fill hole, was unable to pressure up, circulated salt gell, circulated 35 SXS CMT from 2000'.	
Comments	
Shut down for night. Crew travel to location, reviewed BJSA, source gas tested H2S monitors. Opened well with 0 psi shut in. TIH, tag TOC at 2790'. Load casing and tested, would not test. Informed Richard with BLM. Mix 25 SXS salt gell with 65 bls brine and circulated same. POOH, layed down 24 jts of 2-3/8" tubing. Transferred cement. Lunch break for crew, reviewed BJSA. Break circulation, pumped 35 SXS CMT at 2000', displaced to 1800'. POOH, layed down 6 jts and stood back 10 stands of 2-3/8" tubing. Reverse out 10 bls of brine. Secured well for night. Performed maintenance to equipment. Crew travel. Shut down for night.	
5/31/2011 00:00 - 6/1/2011 00:00	
Management Summary	
Tag TOC @ 1815', Load & test, would not psi up. Contact Richard with BLM. Break circ, pumped 35 sks cement at 961 disp to 761. TIH tagged plug, No tag until 1815. Attempt to circ & pump 70 sks cement at 1815, unable to circ, due to cement bridge. Toh std back tbg, close well shut down.	
Comments	
sdon Travel to loc Rbjasa test H2s Monitor. Check psi 0 open well, TIH tagged plug at 1815. Load & test, would not psi up. Contact Richard with BLM. Toh ld 26 jts tbg. Break circ, pumped 35 sks cement at 961 disp to 761. Toh ld 7 jts tbg, std back 11 stds. Woc TIH tagged plug, No tag until 1815.	

# Regulatory Detail Report

Well: Kennedy-Johns A - 3

Field: GRAYBURG JACKSON

ExxonMobil Production Company

Printed: 7/14/2011 Page #4 of 5 Page(s)

Comments
Attempt to circ & pump 70 sks cement at 1815, unable to circ, due to cement bridge. Toh std back tbg, close well shut down. Crew travel sdon
<del>6/1/2011 00:00 - 6/2/2011 00:00</del>
<b>Management Summary</b> Pick up 43/4 bit tih tagged at 790, rotate down with to 830. Circ 30 bbls brine water. Rotate down with tongs to 850. Baker Oil Tool does not have a power swivel available. Toh std back tbg, close well.
Comments
sdon Travel to loc Rbjisa test H2s monitor. Check psi 0 open well. Pickup 43/4 bit tih tagged at 790, rotate down with to 830. Contact Richard with BLM Circ 30 bbls brine water. Rotate down with tongs to 850. Wait on orders, Toh std back tbg, close well. Lunch break Maintain equipment, shut down. Crew travel. sdon
<del>6/2/2011 00:00 - 6/3/2011 00:00</del>
<b>Management Summary</b> Check psi 0 open well. Tih to 830 ft. Tie back, rig up snub line. Wait on power swivel. Rig up power swivel Break circ, drill from 850 to 960. Circ 40 bbls BW. Lay down power swivel, remove stripper rubber. Contact Richard with BLM Tih to 1815 tagged plug, toh std back 27 std, ld 5 jts tbg. Tih to 1815 tagged plug, toh std back 27 std, ld 5 jts tbg. Load out power swivel, close well, shut down.
Comments
sdon Travel to loc Rbjisa Test H2s monitor. Check psi 0 open well. Tih to 830 ft. Tie back, rig up snub line. Wait on power swivel. Rig up power swivel Break circ, drill from 850 to 960. Circ 40 bbls BW. Lay down power swivel, remove stripper rubber. Contact Richard with BLM Tih to 1815 tagged plug, toh std back 27 std, ld 5 jts tbg. Load out power swivel, close well, shut down. Crew travel sdon
<del>6/3/2011 00:00 - 6/4/2011 00:00</del>
<b>Management Summary</b> RIH to 1815, circulate salt gel, circulate 70 sacks of cement, displace to 1415, WOC, RIH tag at 1460, break circulation, circulate 50 sacks of cement at 961, displace to 661, WOC
Comments
Shut down for night Travel to location, review JSA, test H2S monitor, open well with 0 shut-in pressure Tie back, RIH to 1815, mix 20 sacks salt gel with 50 bbls BW Pumped 70 sacks of cement at 1815, displaced to 1415, TOH ld 11 jts tbg, std back 22 stds Waiting on Cement Tih, tagged plug at 1460, and contact Richard with BLM POOH, laid down 15 jts tbg Circulate 50 sacks of cement at 961, displaced to 661 POOH, laid down 9 jts tbg, stood back 10 stds, secured well for night. Crew Travel Shut down for night.
<del>6/6/2011 00:00 - 6/7/2011 00:00</del>
<b>Management Summary</b> Tih tagged plug at 590'. Pumped 70 sks cement at 565' disp to 165'. WOC. Tih tagged plug at 590'. Pumped 45 sks cement at 165 disp to surface. WOC
Comments
Shut Down For The Night Travel to well site. Check psi 0 open well. Tih tagged plug at 590. Load & test, would not psi up. Contact Richard with BLM

# Regulatory Detail Report

Well: Kennedy-Johnsfed A - 3

Field: GRAYBURG JACKSON

ExxonMobil Production Company

Printed: 7/14/2011 Page #5 of 5 Page(s)

Comments
<p>Pumped 70 sks cement at 565 disp to 165.</p> <p>Toh ld 17 jts tbg.</p> <p>WOC</p> <p>Tjh tagged plug at 590.</p> <p>Contact Richard with BLM</p> <p>Pumped 45 sks cement at 165 disp to surface.</p> <p>Toh ld 5 jts tbg, wash out bop &amp; tbg, close well ,shut down.</p> <p>Crew travel</p> <p>Shut Down For The Night</p> <p><b>6/7/2011 00:00 - 6/8/2011 00:00</b></p> <p><b>Management Summary</b></p> <p>Tjh tagged plug at 40 ft toh ld tbg . Load well and check for bubbles. Wait on csg cutter. Pick up csg cutter, cut 7 inch csg, ld cutter. ND bop. Pull csg stub. <u>Tjh to 40 ft, pumped 20 sks cement to surface, ld tbg, top off well.</u></p>
Comments
<p>Shut Down For The Night</p> <p>Drove crew to location. HSM - Review BJSA. Check H2S monitors.</p> <p>Check psi 0 open well.</p> <p><u>Tjh tagged plug at 40 ft toh ld tbg .</u></p> <p>Load well psi test, psi up to 500 bleed down slowly, check for bubbles, no bubbles.</p> <p>Wait on csg cutter. Contact Richard with BLM</p> <p>Pick up csg cutter, cut 7 inch csg, ld cutter.</p> <p>Rig down tbg tong, raise floor.</p> <p>ND bop.</p> <p>Pull csg stub.</p> <p><u>Tjh to 40 ft, pumped 20 sks cement to surface, ld tbg, top off well.</u></p> <p>Wash up equip &amp; tbg, shut down.</p> <p>Crew travel</p> <p>Shut down for the night</p> <p><b>6/17/2011 00:00 - 6/18/2011 00:00</b></p> <p><b>Management Summary</b></p> <p>Dig up anchors, backfill and dress location</p>

# ExxonMobil

## WELL SKETCH - WTX AREA

WELL/LEASE: Kennedy Johnson A 3

CURRENT COMPLETION DATE: PA - 6/30/2011

FIELD: Grayburg Jackson

PREPARED BY/DATE: JA Allen 7/2011

COUNTY/STATE: Eddy, New Mexico

API NUMBER: 3001505010

### ELEVATIONS:

KB Elevation: 4041' MD

### LOCATION:

1980' FSL & 660' FWL

Unit: L

Section: 35

Township: 16S

Range: 31

Lease Serial #: LC 056302A

### **Surface Casing:**

12 1/2" (0' - 56' MD)

14" hole ?

ETOC @ Surface

### **Production Casing:**

7" (0' - 3444' MD)

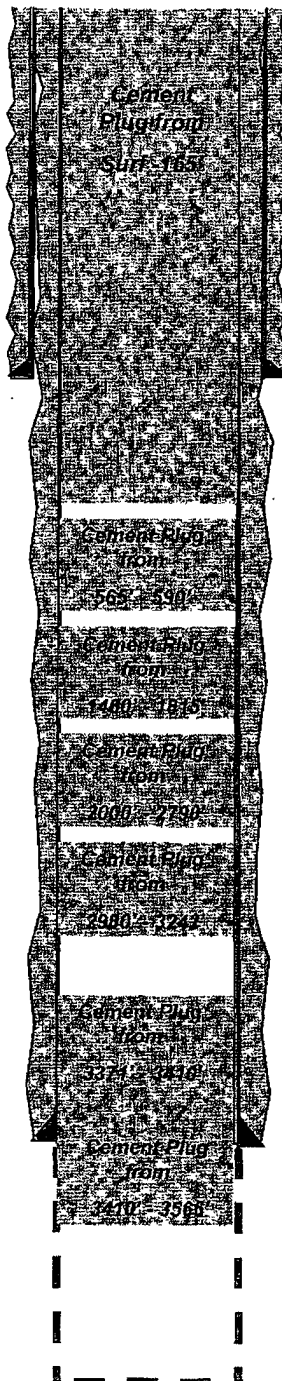
ETOC @ Surface

8 3/4" hole ?

Open Hole:

3444' - 4259' MD

### **Current**



TD : 4259' MD